

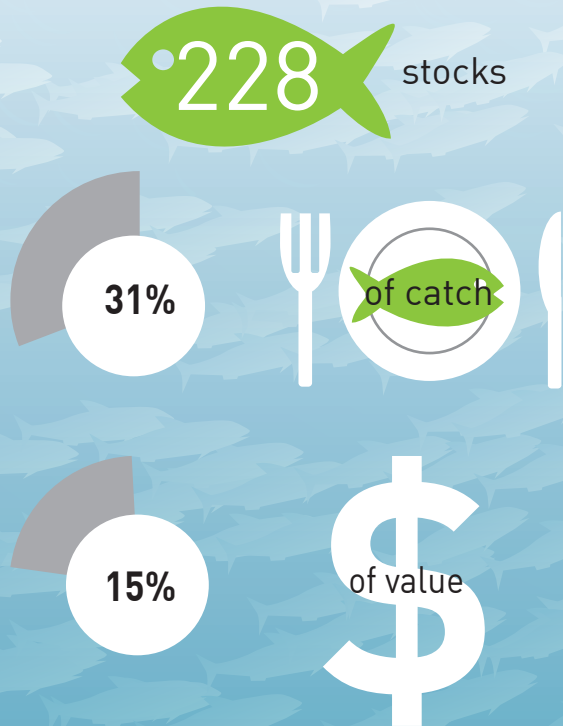
# Status of New Zealand's fish stocks 2019



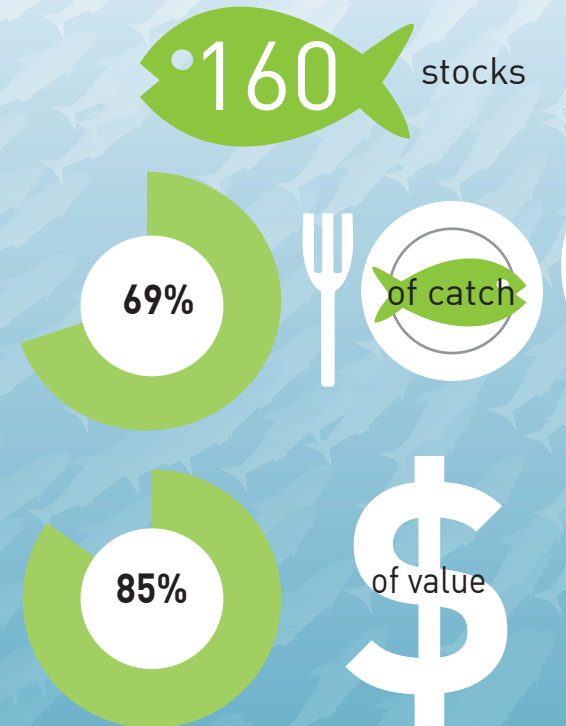
Fisheries New Zealand

Tini a Tangaroa

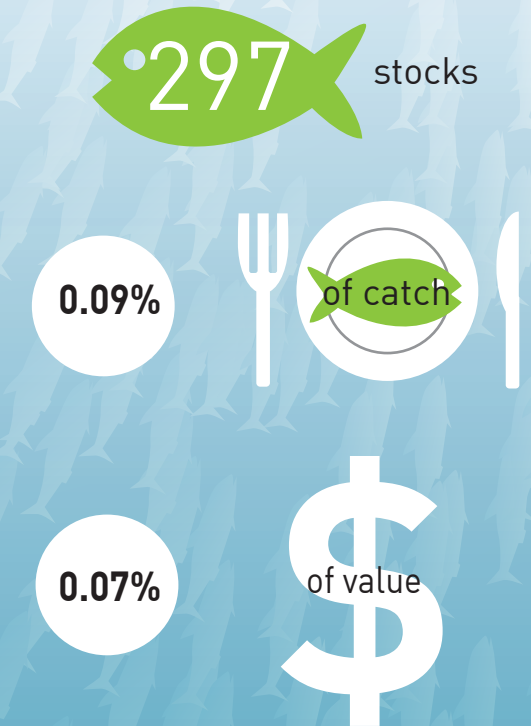
## Not assessed



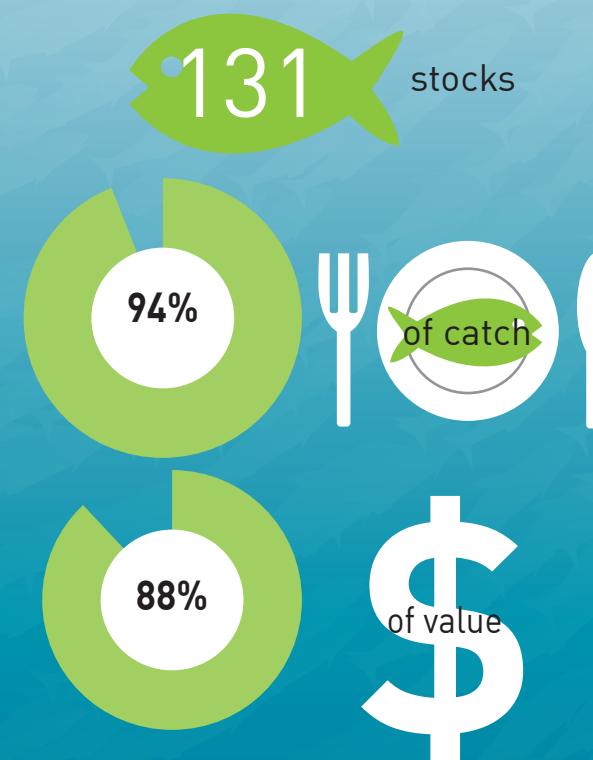
## Scientifically evaluated stocks



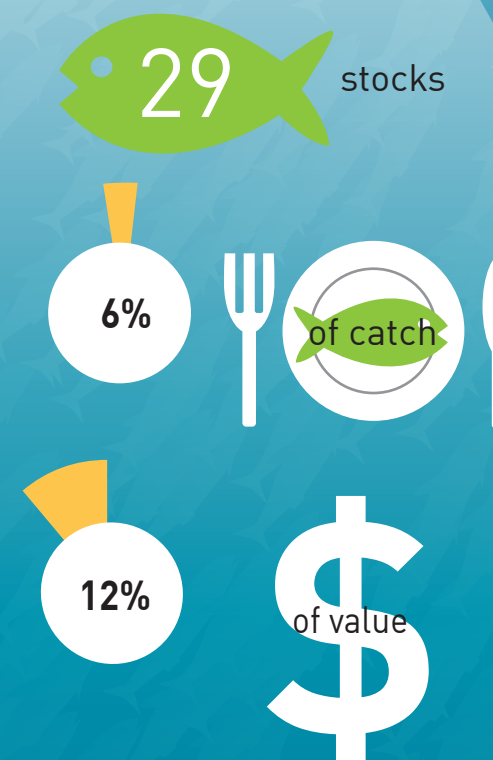
## Nominal



### Above (No sustainability issues)



### Below (Reduce catches to rebuild)



# Status of New Zealand's fish stocks 2019

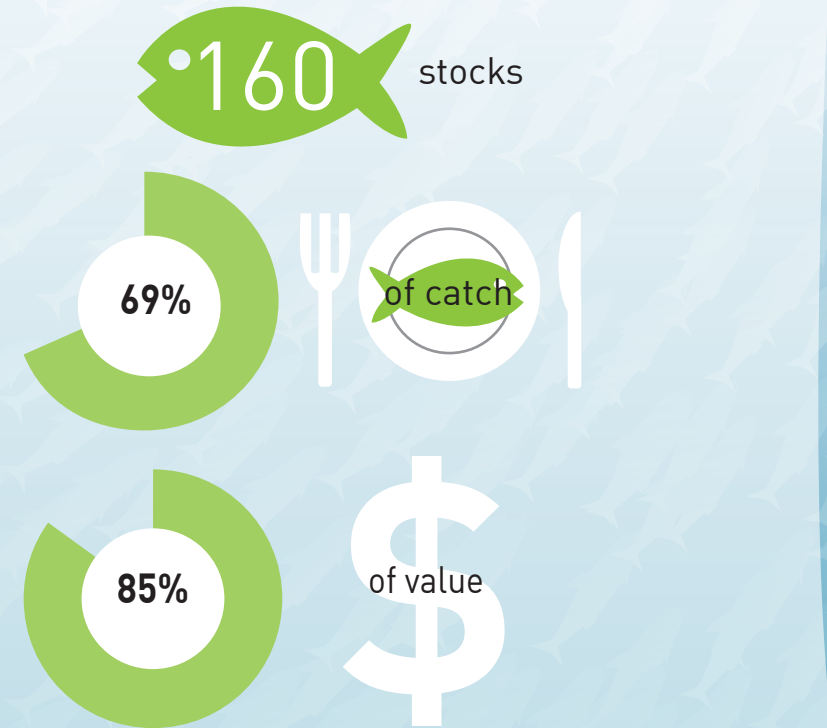


## Scientifically evaluated stocks

Scientifically evaluated stocks account for **69%** of the tonnage of landings and **85%** of the value of landings – and include most of the main commercial fish species.

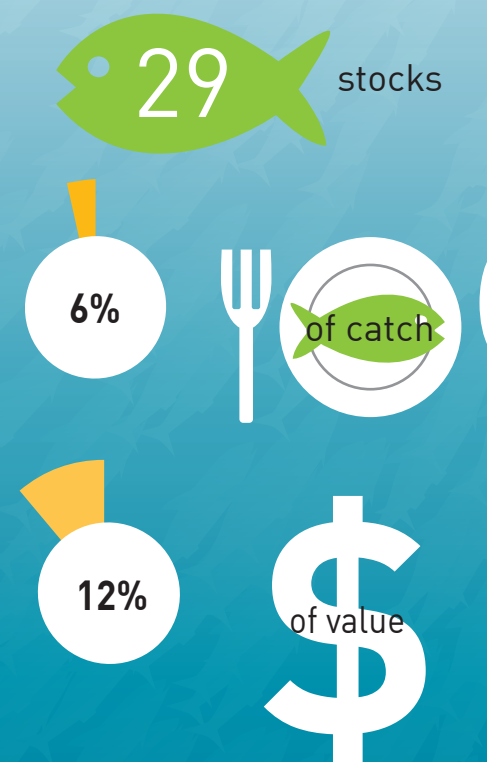
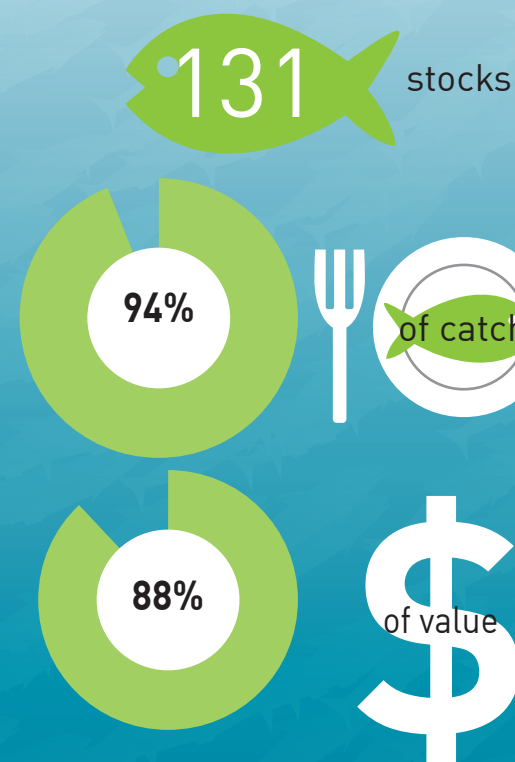
A near-record percentage of the tonnage of landings of scientifically evaluated stocks has no sustainability issues.

**82%** of scientifically evaluated stocks have no sustainability issues.



**Above**  
(No sustainability issues)

**Below**  
(Reduce catches to rebuild)



Highlights from recent assessments indicate strong performance for both stocks of hoki, most stocks of ling, crayfish, red gurnard; 4 stocks each of orange roughy, scampi, stargazer, John dory and NI longfin eels; 3 stocks each of blue cod, rig and barracouta; 2 stocks each of kingfish and red cod; and snapper in Golden and Tasman Bays.

Corrective management action is in place for all stocks that are below performance metrics to enable rebuilding – this has been successful for several orange roughy, hoki, snapper, crayfish and other stocks.