



See Contain Report

From the Editors: Changes in the Management of Transitional Facilities

Nov 2016

You may have seen a few media releases from MPI recently about changes in the way MPI will manage transitional facilities (TFs). These changes are intended to improve the biosecurity performance of TFs operating in New Zealand and to help MPI recover costs associated with approving and monitoring TFs. Below is a brief description of these changes.

1. Cancellation of TFs that do not receive any containers or cargo in a single year

MPI will now seek to revoke approval for TFs that have been operating for a year without receiving containers or any other cargo. Facilities in question will not be closed if they indicate intent to receive consignments within 6 months, but they will require MPI supervision during devanning to ensure biosecurity procedures are being followed correctly. There will be the usual hourly rate charge for this supervision.

2. New Operator Application Fee

MPI will apply a flat charge of \$887.70 for approving a new TF Operator to take effect from 16 December 2016. This replaces the current hourly rate charged for Operator approval and is covered by the Biosecurity Cost Regulations updated in 2015. This will allow MPI to recover administration costs that are not currently captured by the hourly rate charge. Note that this new Operator fee will not be imposed for brand new TF applications (i.e. a new TF application will only be charged the current TF Application fee of \$887.70).

3. Operator and Accredited Person Training Changes

As mentioned in the June edition, MPI will require re-training for TF Operators and Accredited Persons (APs) every two years after their initial training is conducted (with the initial training in a classroom setting). Subsequent re-training may occur in either a classroom or via an assessment of competence onsite at the TF. Operator training will be a full-day course with a pre-course assignment. AP training remains as a half-day course and will be relatively unchanged, other than for periodic content changes.

4. Accredited Person & TF Operator Certificate Re-issue

Some AP and TF Operator certificates are being re-issued to align with the new training regime. This will only impact TF Operators or APs trained between Jan 2015 and July 2016 who were issued with a four-year expiry period on their training certificate. These existing certificates will be revoked by MPI. In their place, MPI will issue new certificates with a two-year expiry date from the date of training. For example, if an Operator was trained on 23 June 2016 and issued with a certificate with an expiry date of 23 June 2020, this will be revoked by MPI. The new expiry date will be 22 June 2018.

No further action is required for APs or Operators who trained between December 2012 and December 2014 and have a four-year expiry on their training certificate (they will retain their existing expiry dates). At their next retraining, they will be issued certificates with a two-year expiry date. Those trained from 1 Aug 2016 will receive training certificates with a two-year expiry date.

If you have any comments or questions, please contact us: Chris Denny (chris.denny@mpi.govt.nz) or Dave Nendick (dave.nendick@mpi.govt.nz).



Know the Enemy: Asian Hornet

The Asian hornet is spreading through Europe after invading South Korea. It is a large wasp (2-3 cm) with a dark brown/black thorax, yellow leg tips and a yellow face. Hornet larvae eat honeybees. The pest could easily establish in New Zealand as our environment is compatible and honeybees are very common here. Entry to New Zealand could be through hibernating queens or small nests. They could be transported as hitchhiker organisms with a wide range of containerised items, such as domestic wares, machinery, personal effects, pottery and wooden crates. This is because queens can overwinter in these types of items.

Asian hornets represent a serious threat to bee keepers. They can decimate bee numbers. Their sting can also produce painful and occasionally dangerous reactions. The two exotic wasp species already in New Zealand are estimated to have an impact of at least \$133 million each year.



Asian Hornet and Asian Hornet Queen in spring nest

If you see anything that looks like this pest or anything unusual, please catch or spray it, shut the container and call MPI on 0800 80 99 66 or your local MPI office as soon as possible.

From the Frontline

Introducing Vicki Booth – Senior Quarantine Officer

I'm based in Dunedin and I have been with the MPI for 13 years as a quarantine officer and senior quarantine officer, starting when Accredited Person training was first introduced. I ran those courses in Dunedin in conjunction with Trudi McDonald when MPI was initially involved with that process. I am now involved with TF liaison, approvals and carrying out verification checks. This takes about half to three quarters of my time depending on the time of year. The rest of my time goes on airport, cargo and shipping work. I've also been to several very interesting snake handling courses.



My main advice for TF Operators is don't hesitate to give us a call or email us if seeking advice about your TF or consignments. It's always easier to deal with situations before things escalate. We see biosecurity as a team affair.

Changes for New TF Applications Only

MPI will now consider container volume when approving a new TF application. Note that this change will not affect existing TFs. This change is because TF Operators and staff who process low volumes of goods each year can find biosecurity requirements to be burdensome or confusing. This can lead to compliance issues and disproportionate costs for MPI. For that reason, MPI will consider declining application approval for new TFs that plan to only receive six or fewer containers each year. MPI will consider container volumes as part of the approval process and approvals will continue to be made on a case-by-case basis.



AP Reporting Contamination or Pests

Accredited Persons only need to send MPI a log sheet when they actually find contamination or pests and have dealt with the interception or called MPI. There is no requirement to send MPI container log sheets where no contamination is found. Any log sheets with no contamination just need to be kept on file by the TF Operator and do not need to be sent to MPI. If you find live pests such as insects (especially stink bugs) and spiders, call MPI on **0800 80 99 66**. Any other contamination can be reported to MPI on a log sheet.

AP Contamination Reporting – Fax Ceasing by mid-2017

MPI is phasing out the faxing of hardcopy log sheets to the Target Evaluation team for processing. The plan is to receive all contamination reporting from APs via the Container Checks Portal

<https://containerchecks.maf.govt.nz/Default.aspx> by mid-2017. Upgrades and improvements to this site within the next four to six months will make this timeline possible. For any queries, please contact Target Evaluation Team Manager Dunja.Hassencamp@mpi.govt.nz

Internal Audit Reports

A new TF Gen requirement is that TF Operators must provide MPI with their internal audit report within 10 working days of being completed. This requirement will come into effect after 16 December 2016. The change will provide MPI with confidence that such audits are being conducted as required and that the TF is still operating compliantly. MPI is currently investigating options to receive these audit reports. **Please do not send your internal audit reports to us until we have determined the best method to receive these.** Note TFs are expected to complete their internal audit six months after their approval date.

Quarantine Waste Collection

A reminder that all quarantine waste must be secure and collected from TFs at least once a year, with records kept as evidence. Waste is typically collected and disposed of by an MPI-approved treatment supplier. However, in regions where there are no approved treatment suppliers, MPI has set-up equivalence systems to mitigate any biosecurity risk. Unless authorised, third parties are not permitted to collect and deliver quarantine waste to an approved treatment supplier.



Register now for Protecting to Grow New Zealand: Biosecurity Forum 2016

Whether you're a home gardener, a farmer, a fisherman, a grower, an avid internet bargain hunter or international globetrotter, protecting to grow New Zealand is everyone's business. Join us at the 'Protecting to Grow New Zealand: Biosecurity Forum 2016' to launch the Biosecurity 2025 Direction Statement and hear from national and international experts about the future of biosecurity in New Zealand.

At the two-day forum we'll focus on the important role of our global biosecurity system to protect and grow New Zealand's unique environment, economy and people. The forum will be held in Auckland at the Pullman Hotel on Tuesday 22 (Forum) and Wednesday (Workshops) 23 November 2016. Find out more on MPI's website at <https://www.mpi.govt.nz/about-mpi/our-work/conferences-and-events/biosecurity-forum-2016/>

TF & Operator Application 'Brown Out' Period

As with previous years, MPI will not be able to process new TF/Operator applications from Monday 28 November until Friday 20 January 2017. This is due to MPI staff members being deployed elsewhere over that period.

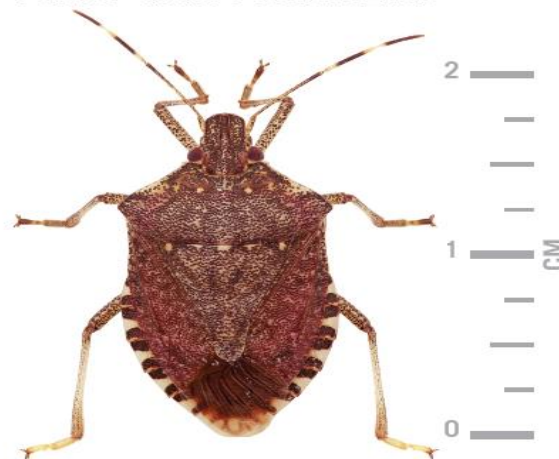


Brown Marmorated Stink Bug (BMSB)

As the Brown Marmorated Stink Bug (BMSB) season is now on us, MPI is targeting containers from designated ports in the USA and Italy for inspection. BMSB has been found in many types of imported goods – from coffee grinders to crane parts. If BMSB gets into New Zealand it will likely have very serious effects on agriculture, the environment and horticultural crops. Therefore, it is important to keep a watchful eye for them and to report live and dead finds.

Targeted BMSB intervention will be used throughout the season to ensure minimal disruption to importers while ensuring optimum biosecurity protection. Accordingly, risk areas around the world may be adjusted by MPI at short notice to respond to changing risk. MPI will endeavour to keep you informed of any updates. If you have any questions regarding cargo clearance applications, contact Dunja.Hassencamp@mpi.govt.nz.

**IF YOU FIND ONE OF THESE IN
ANY CONTAINER:**



**CATCH IT.
CALL US.**

EXOTIC PEST & DISEASE HOTLINE 0800 80 99 66

Exotic pests like the brown marmorated stink bug are
a threat to primary industries and environment.

New Zealand Government

Ministry for Primary Industries
Manatū Ahu Matua



Please email MPI at seacontainer@mpi.govt.nz if you have any comments or questions about this report, APs or TFOs.

MPI Contact Details

- General Inquiries: 0800 00 83 33
- Biosecurity Import Clearances: 0800 22 20 18
- Exotic Pest and Disease Hotline: 0800 80 99 66
- International Caller Number: 64 04 894 0100
- TFs & Containment Facilities go to:
<http://www.biosecurity.govt.nz/regs/trans>
To subscribe to MPI announcements go to
<http://www.biosecurity.govt.nz/lists>