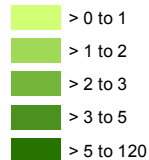


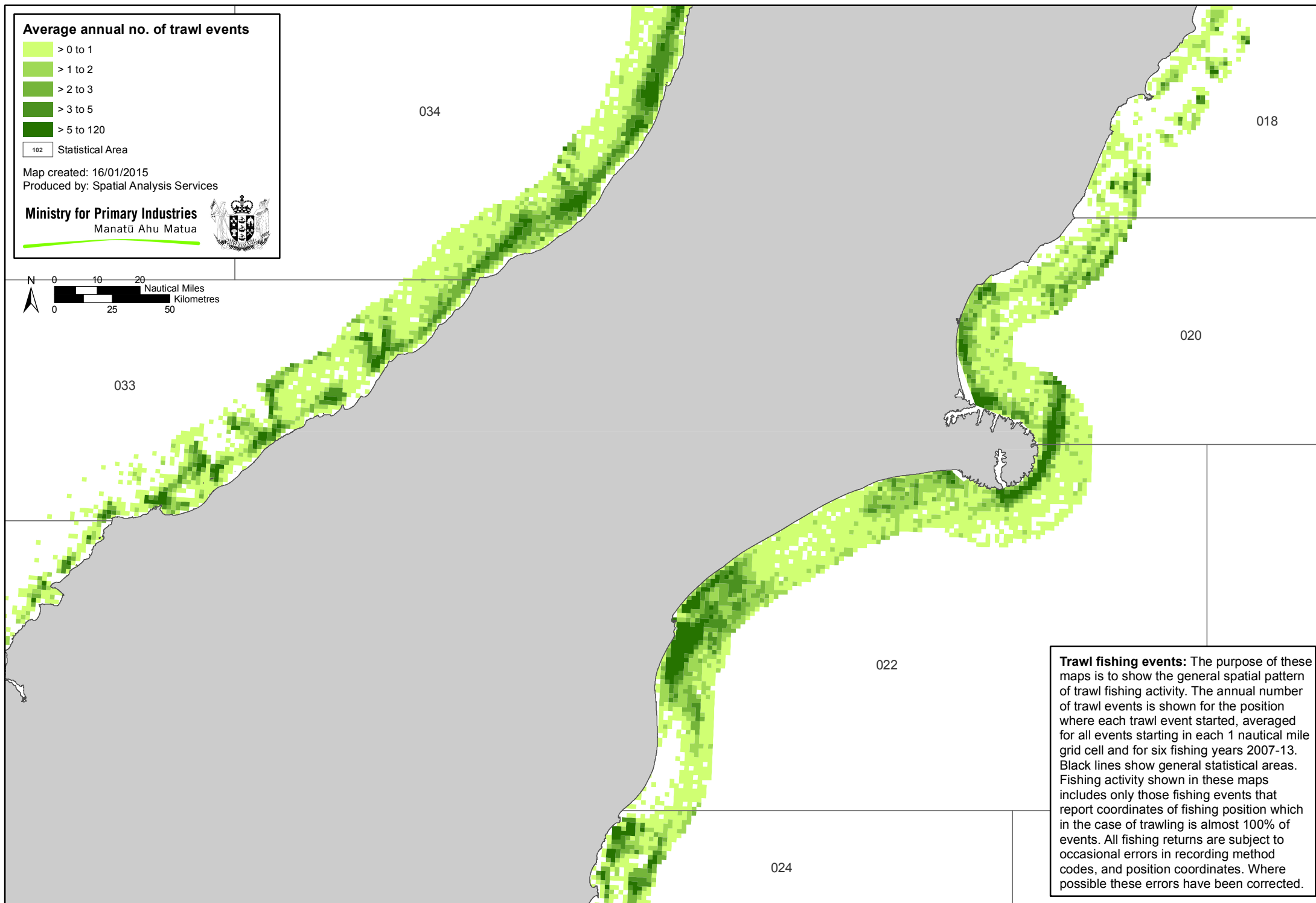
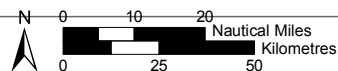
Average annual no. of trawl events



102 Statistical Area

Map created: 16/01/2015
Produced by: Spatial Analysis Services

Ministry for Primary Industries
Manatū Ahu Matua



Trawl fishing events: The purpose of these maps is to show the general spatial pattern of trawl fishing activity. The annual number of trawl events is shown for the position where each trawl event started, averaged for all events starting in each 1 nautical mile grid cell and for six fishing years 2007-13. Black lines show general statistical areas. Fishing activity shown in these maps includes only those fishing events that report coordinates of fishing position which in the case of trawling is almost 100% of events. All fishing returns are subject to occasional errors in recording method codes, and position coordinates. Where possible these errors have been corrected.