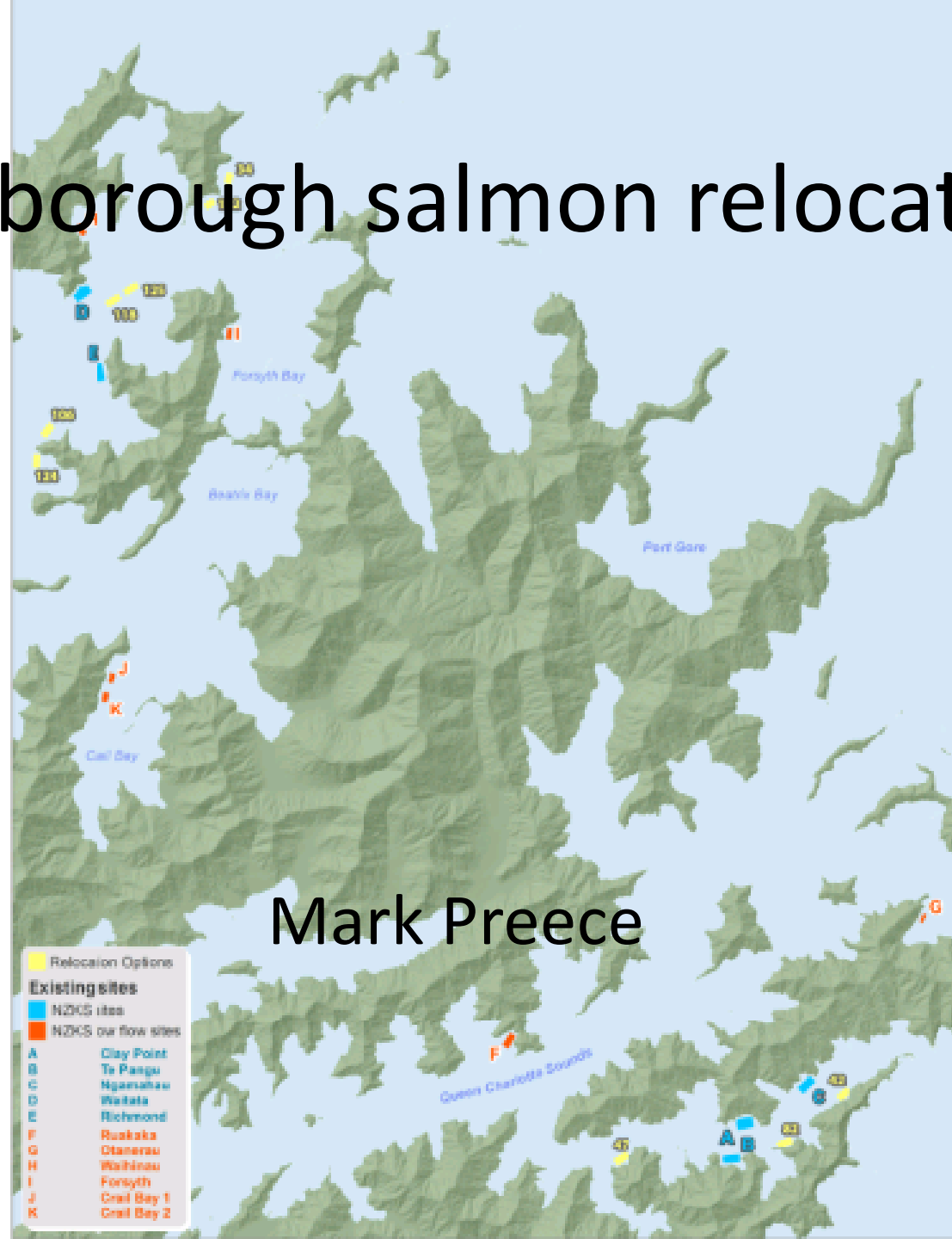


# Marlborough salmon relocation

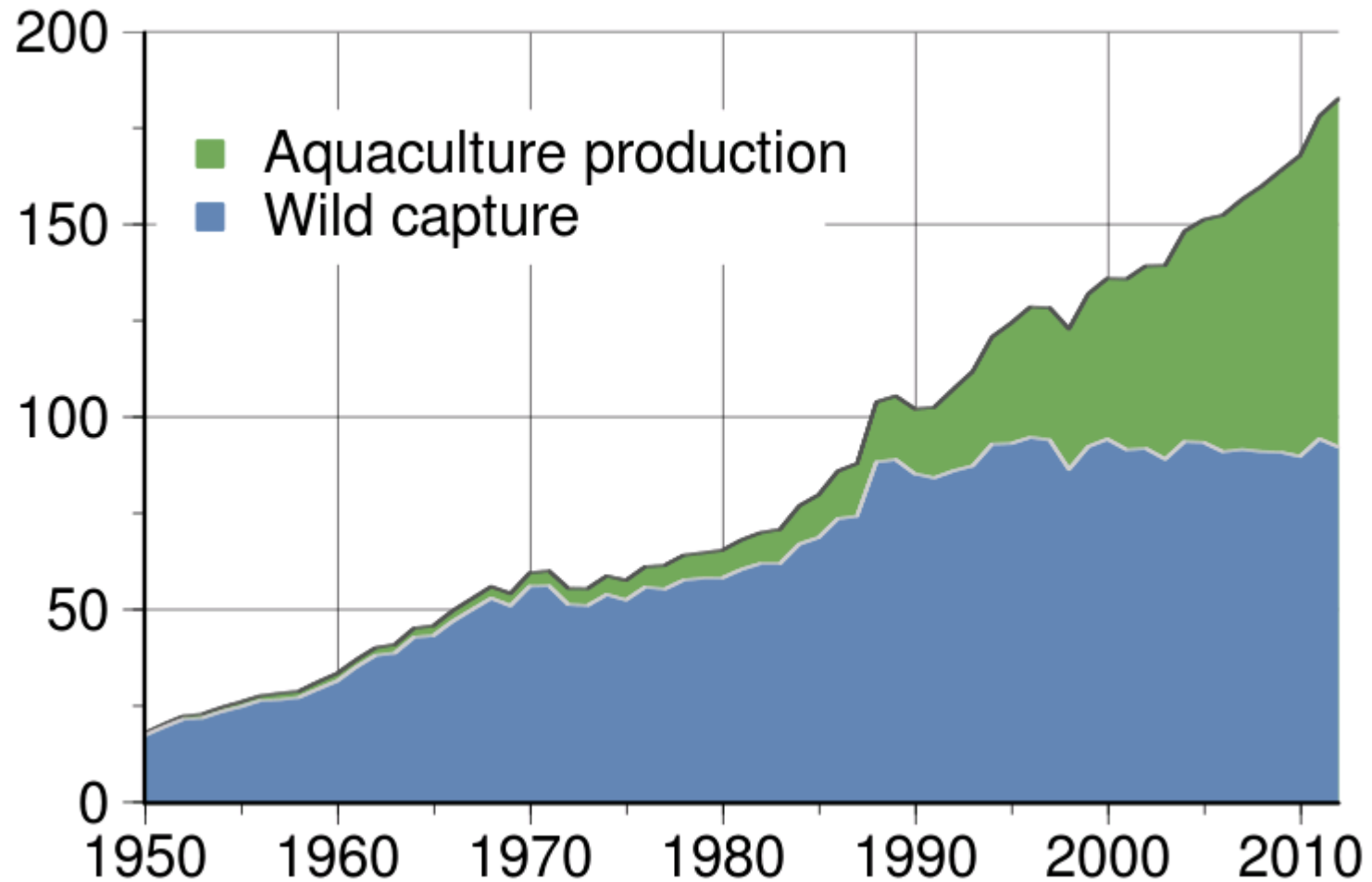


Mark Preece



750kg of crayfish  
in 2 days – top  
price this season  
\$100/kg

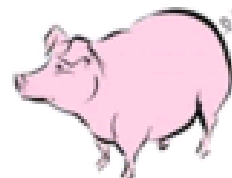
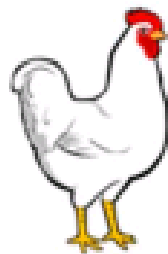
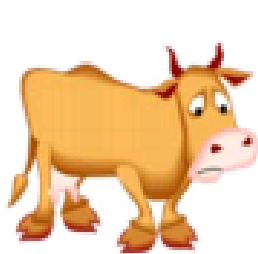
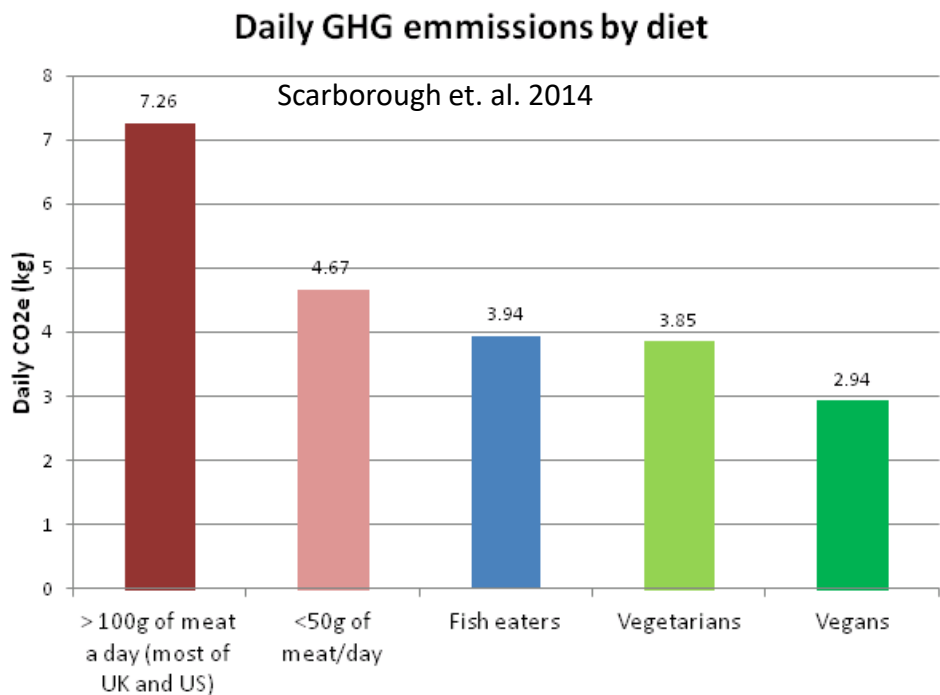
# Changes in fish production, FAOstat, 2014



## Efficiency measures for different forms of animal derived protein

| -                                     | <i>King Salmon<br/>(Oncorhynchus<br/>tshawytscha)</i> | <i>Atlantic<br/>salmon<br/>(Salmo<br/>salar)<sup>7</sup></i> | <i>Pig (Sus<br/>scrofa)</i> | <i>Chicken<br/>(Gallus gallus)</i> | <i>Lamb<br/>(Ovis<br/>aries)</i> |
|---------------------------------------|---|--|-----------------------------|------------------------------------|----------------------------------|
| Harvest yield<br>(%) <sup>a</sup>     | 88  | 86.0   | 72.5                        | 65.6                               | 46.9                             |
| Edible yield (%) <sup>b</sup>         | 70  | 68.3   | 52.1                        | 46.1                               | 38.2                             |
| Feed conversion<br>ratio <sup>c</sup> | 1.80  | 1.5  | 2.63                        | 1.79                               | 6.3                              |
| Energy<br>retention (%) <sup>d</sup>  | 23  | 23   | 14                          | 10                                 | 5                                |

# Efficiency measures for different forms of animal derived protein

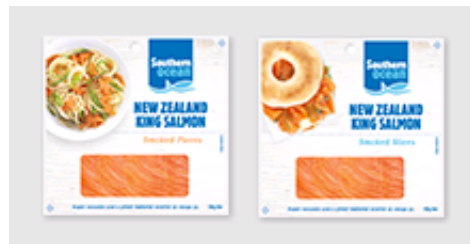
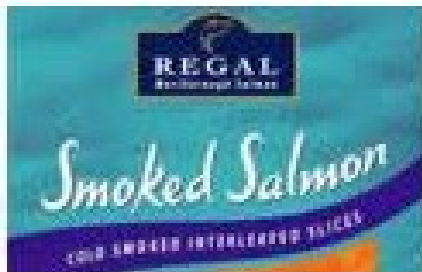


**Carbon footprint**  
kg CO<sub>2</sub>/kg edible meat

**Water consumption**  
litre/kg edible meat

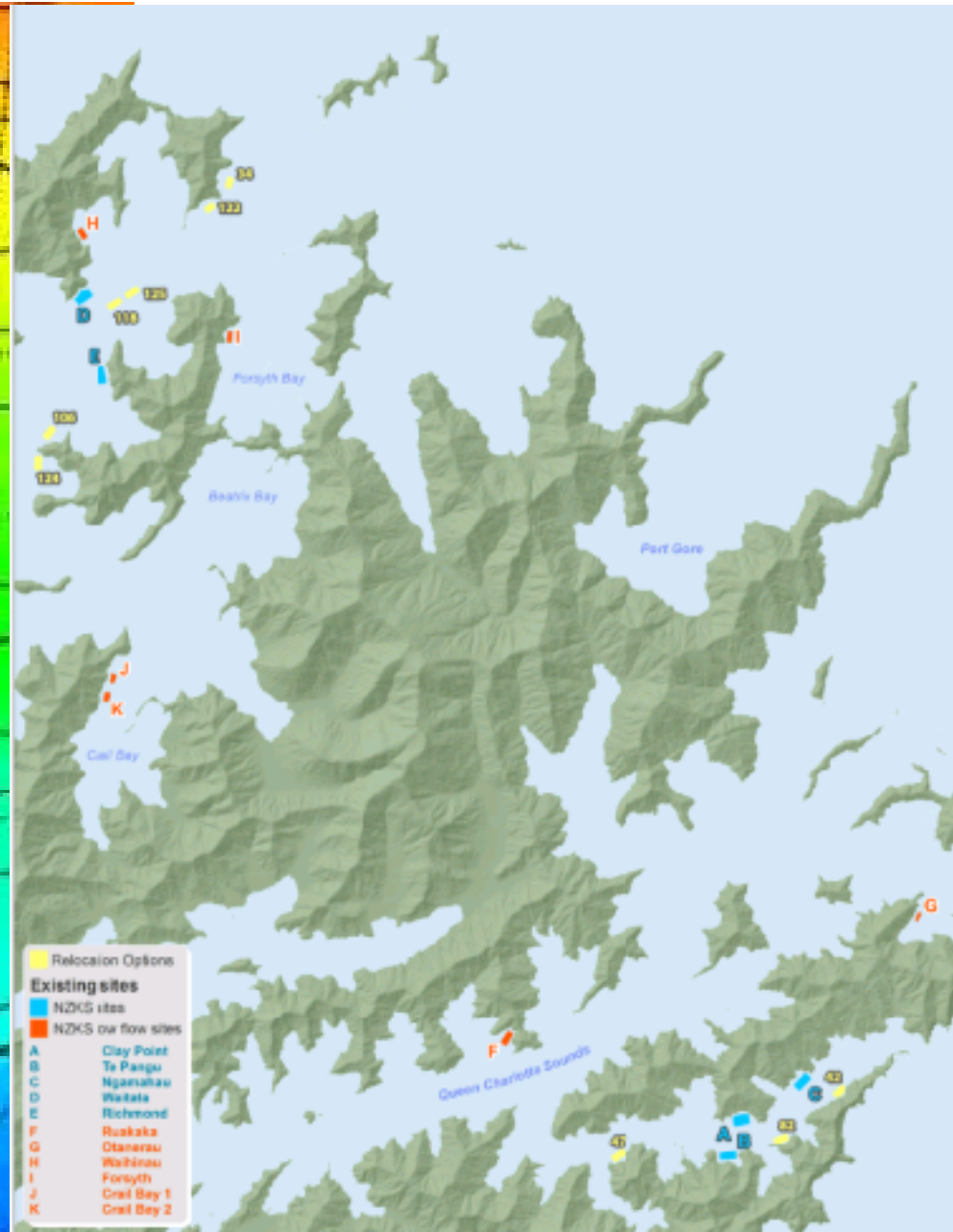
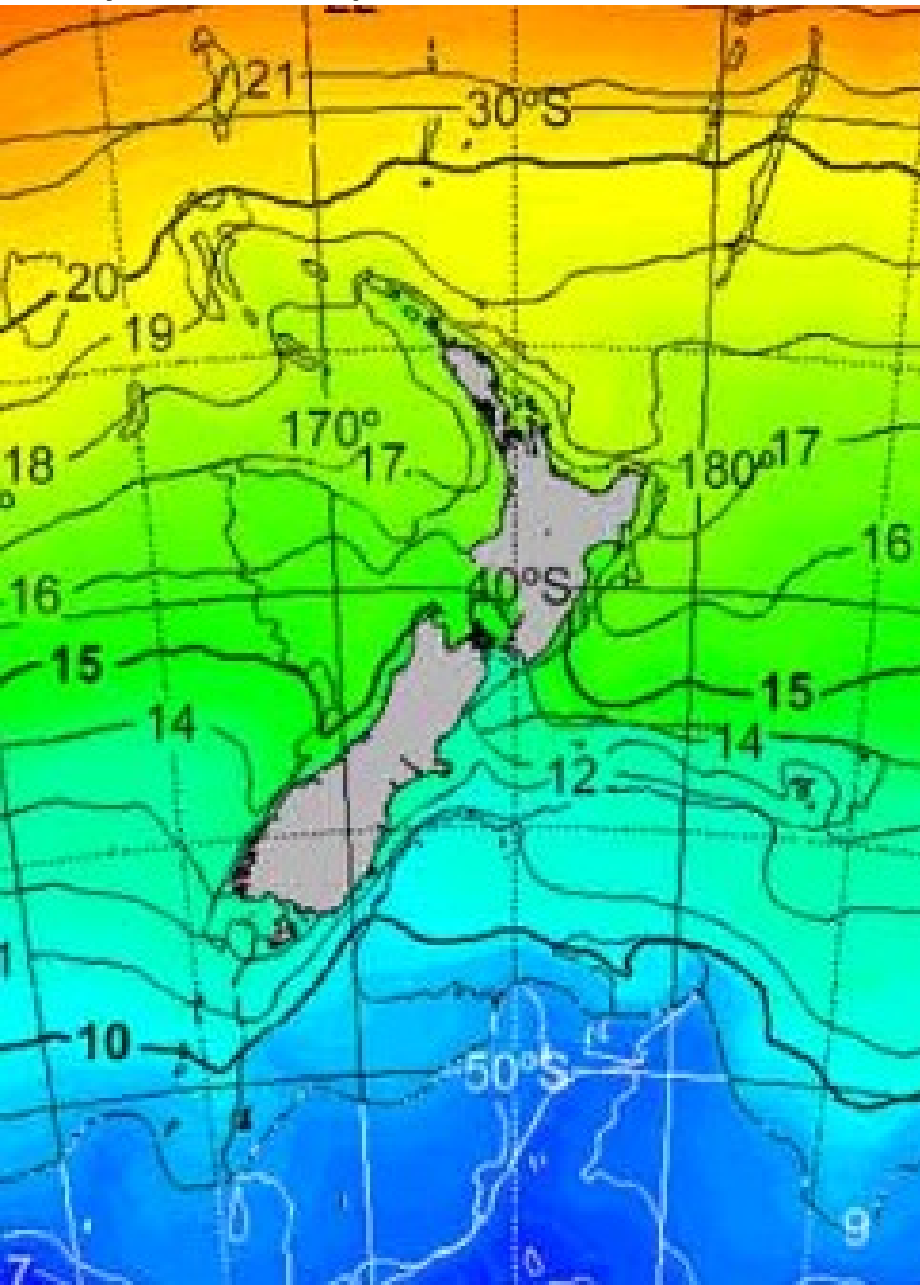
|              |             |             |                            |
|--------------|-------------|-------------|----------------------------|
| 30 kg        | 3.4 kg      | 5.9 kg      | 2.9 kg                     |
| 15,400 litre | 4,300 litre | 6,000 litre | 1,400 litre <sup>(1)</sup> |

# Efficiency measures for different forms of animal derived protein





My site swap order: Crail > Waihinau > Forsyth > Otanerau > Ruakaka



# Maintaining views and looking after natural flora and fauna

