



Grant Lovell - MPI Presentation

APRIL 2017

Salmon Production Cycles



Production Planning

- 5 years for Broodstock requirements
- 2 ½ years for anticipated smolt input numbers
- Fresh water timeframe 8 - 12 months
- Seawater grow out time frame 16 month

Key Goal - Year round consistent supply

- Photoperiod manipulation
- Temperature linked to development
- Smolt input linked to farm location, timing, pen availability
 - limited options for some smolt

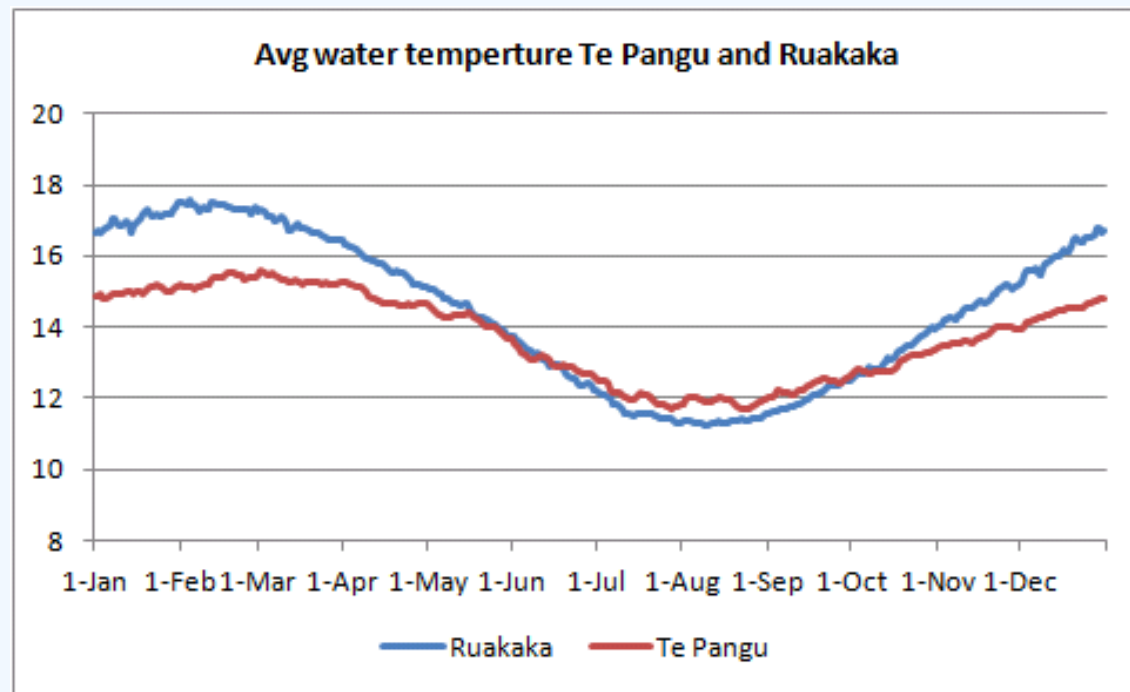


Growth projections and Modelling

- Highly variable
- Environmental differences between sites and years

It's a jigsaw

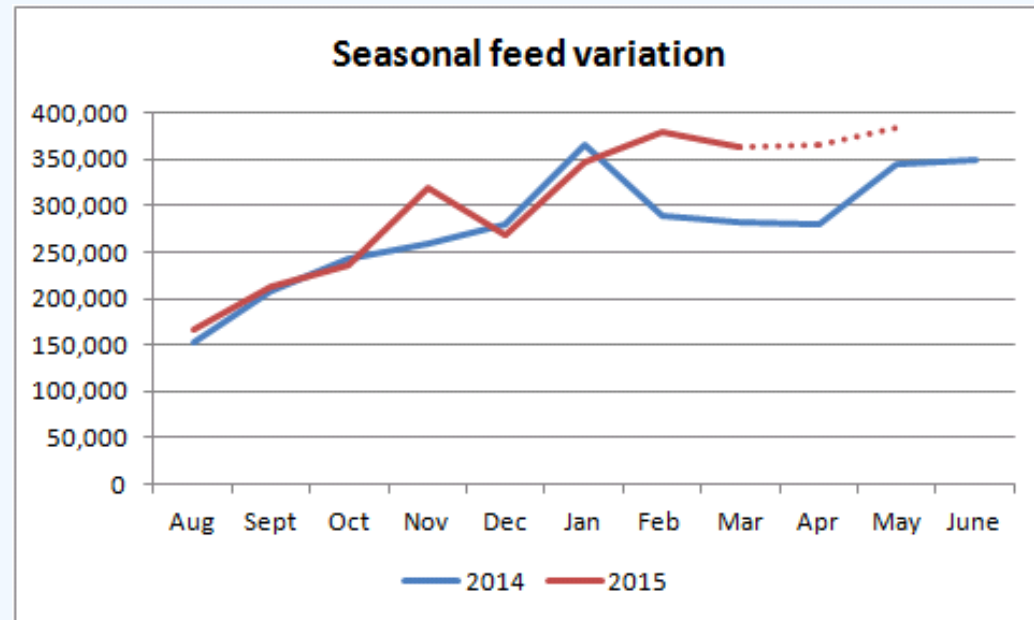
- Need to align harvest and sales to ensure no long term issues



Feed Planning

- Largest cost
- linked to consents
- Influenced by many factors
 - Diet Quality and Composition
 - Environmental factors
 - size and growth rate
 - Stress factors
 - Harvest planning and alignment

Highly Variable and very difficult to get right each year



Feed Management

- Modern systems
- Closely monitored - cameras on every pen
- Variations automatically flagged
- 99.9% consumed
- Pellet detection software trials
- Trial pens for research and development
- Feed caps verses BMP guidelines



Potential new sites

- Staged management and possible overlap
- Infrastructure replacement
- Feed caps and development
 - Overly conservative and not practicable
 - Very long times and small increases
 - 2 staged development and linked to BMP



Conclusion

- Planning is multifactorial and involves very long lead times
- There is significant natural variability in the the processes we undertake
- Feed is very managed tightly but highly variable due to many factors
- Feed caps are a poor form of regulation
- New sites need to be implemented carefully and overlap may be required due to infrastructure issues



GRANT LOVELL - MPI SUBMISSION

APRIL 2017