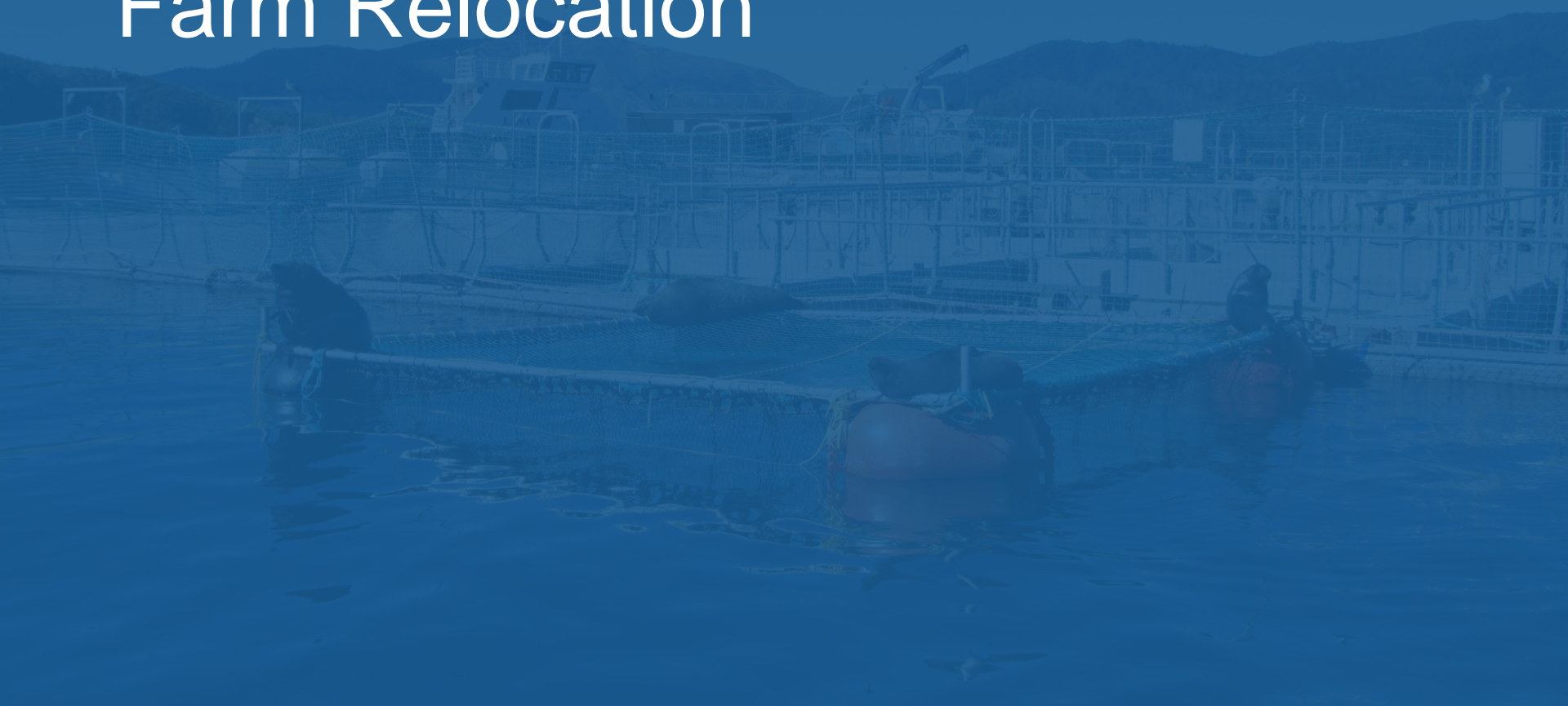
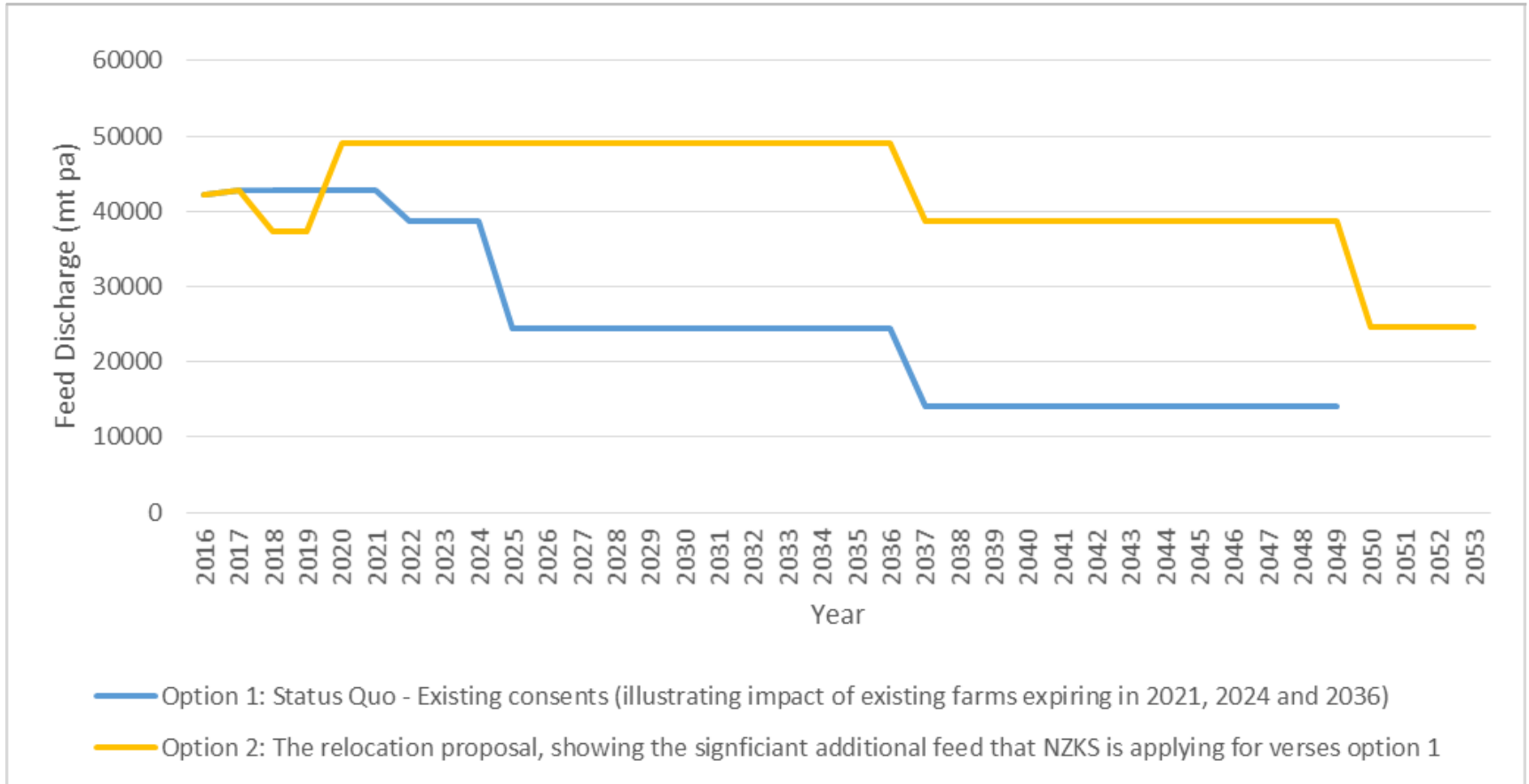


Tuesday, 2 May 2017

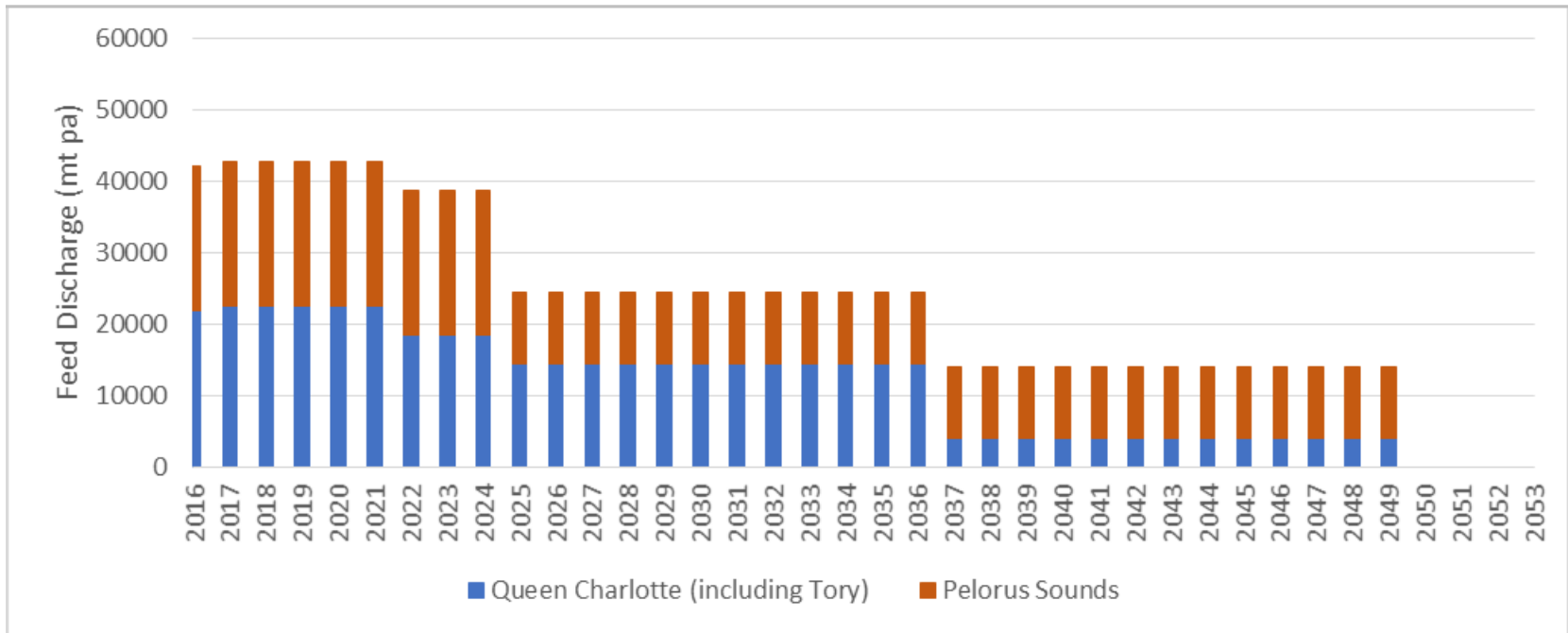
Proposed Marlborough Salmon Farm Relocation



1: 2016 Proposal – Comparing Feed Discharge



2: Option 1: Status Quo – Total Feed by Sound



3: Option 2: Relocation Proposal – Total Feed Discharge by Sound

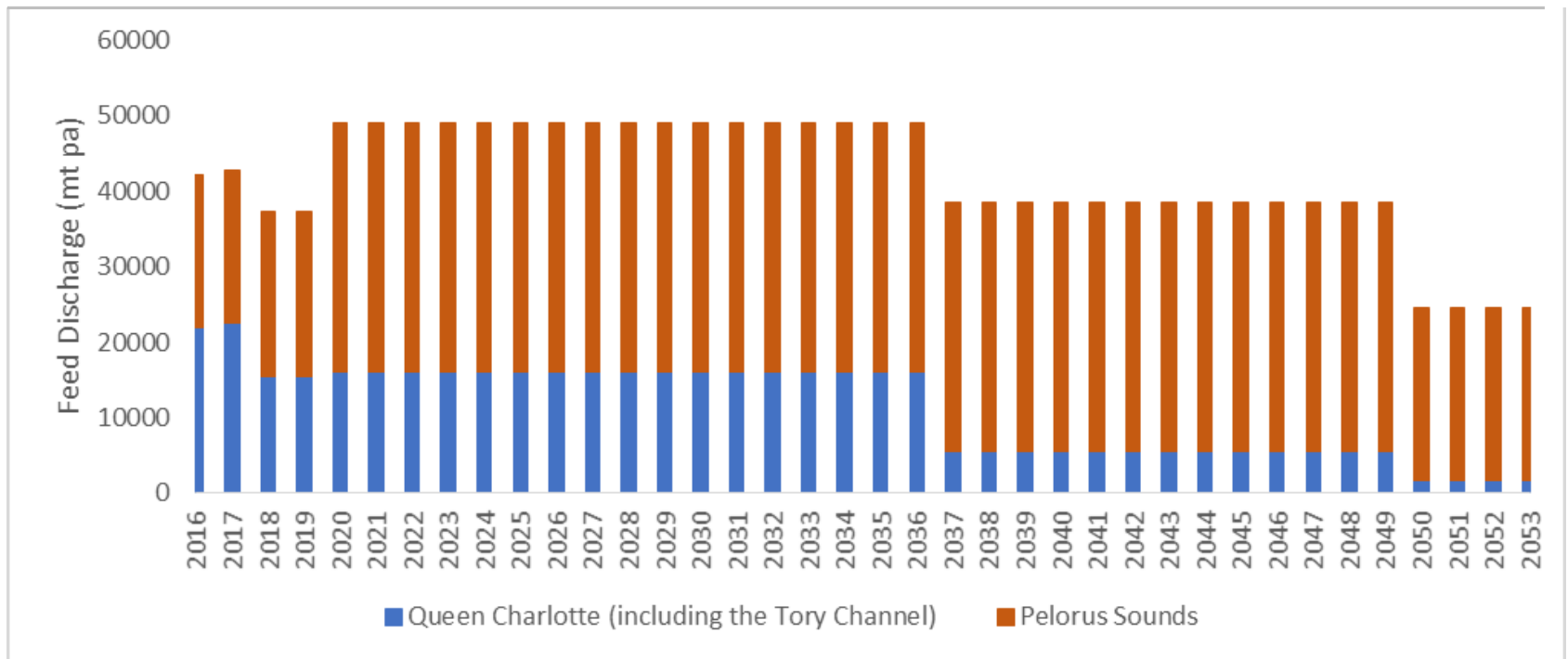
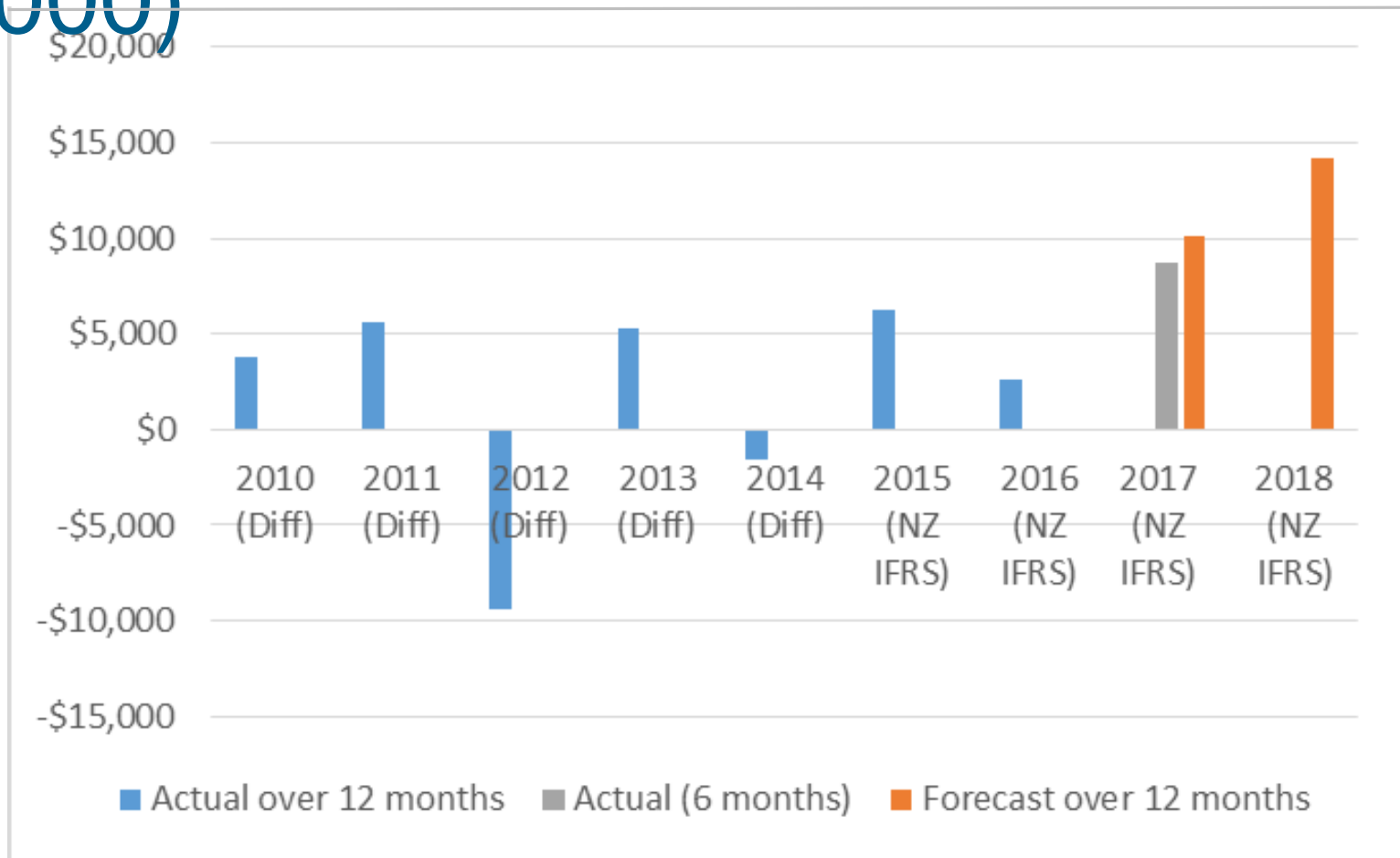


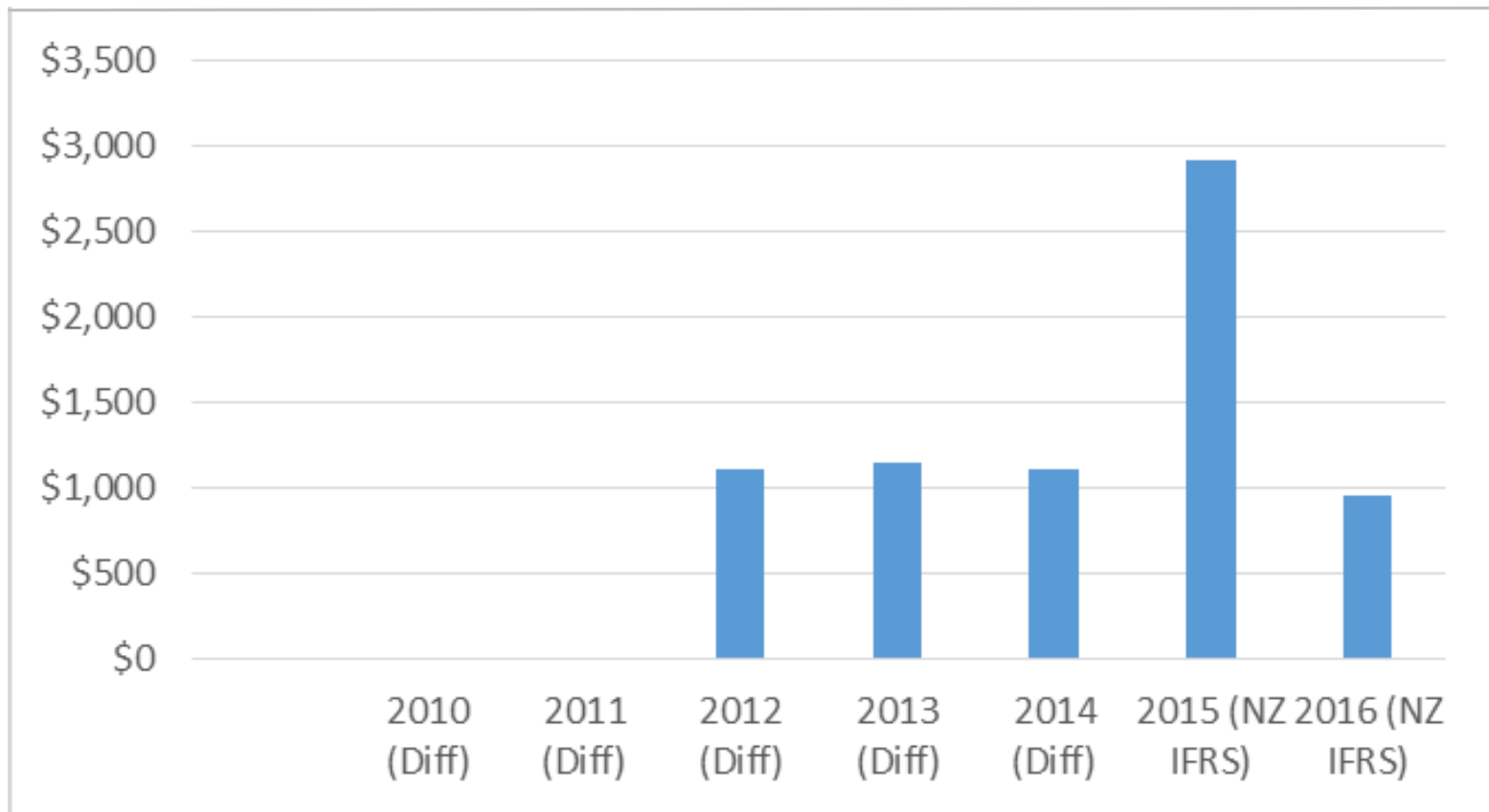
Table 1: List of research commissioned for MSWG

Research	Provider
Navigation	Navigatus Consulting Ltd
Landscape and natural character	Hudson and Associates
Tourism and recreation	TRC Tourism Ltd
Seabirds	NIWA
Marine mammals	Cawthron and Associates
Pelagic fish	Statfishitics
Benthic	NIWA and Cawthron Institute
Water quality	NIWA and Cawthron Institute
Discharges (Cu/Zn, greywater)	Cawthron Institute
Disease and pests	DigsFish and Cawthron Institute
Biosecurity	Cawthron Institute
Underwater lighting	Cawthron Institute
Noise	Marshall Day Acoustics
Cultural impact assessment	Maximize Consulting Ltd
Heritage impacts	Heritage Works
Social impacts	Taylor Baines & Associates
Economic analysis	PwC
Operations	NZKS
Engineering	OCEL

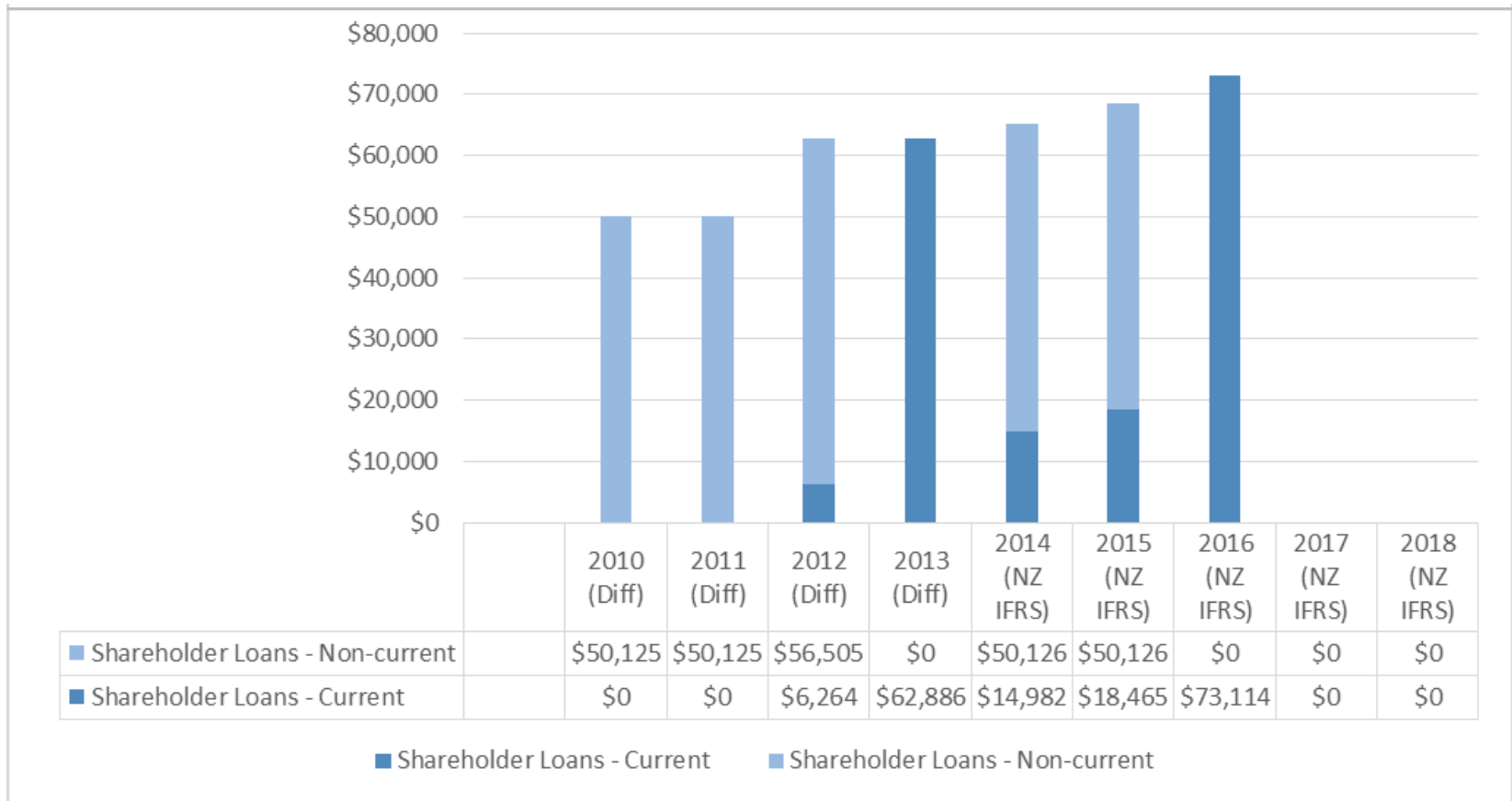
4: Net profit/Loss for the year (000)



5: Fish Heath Events (mortalities) actual expensed (\$000)



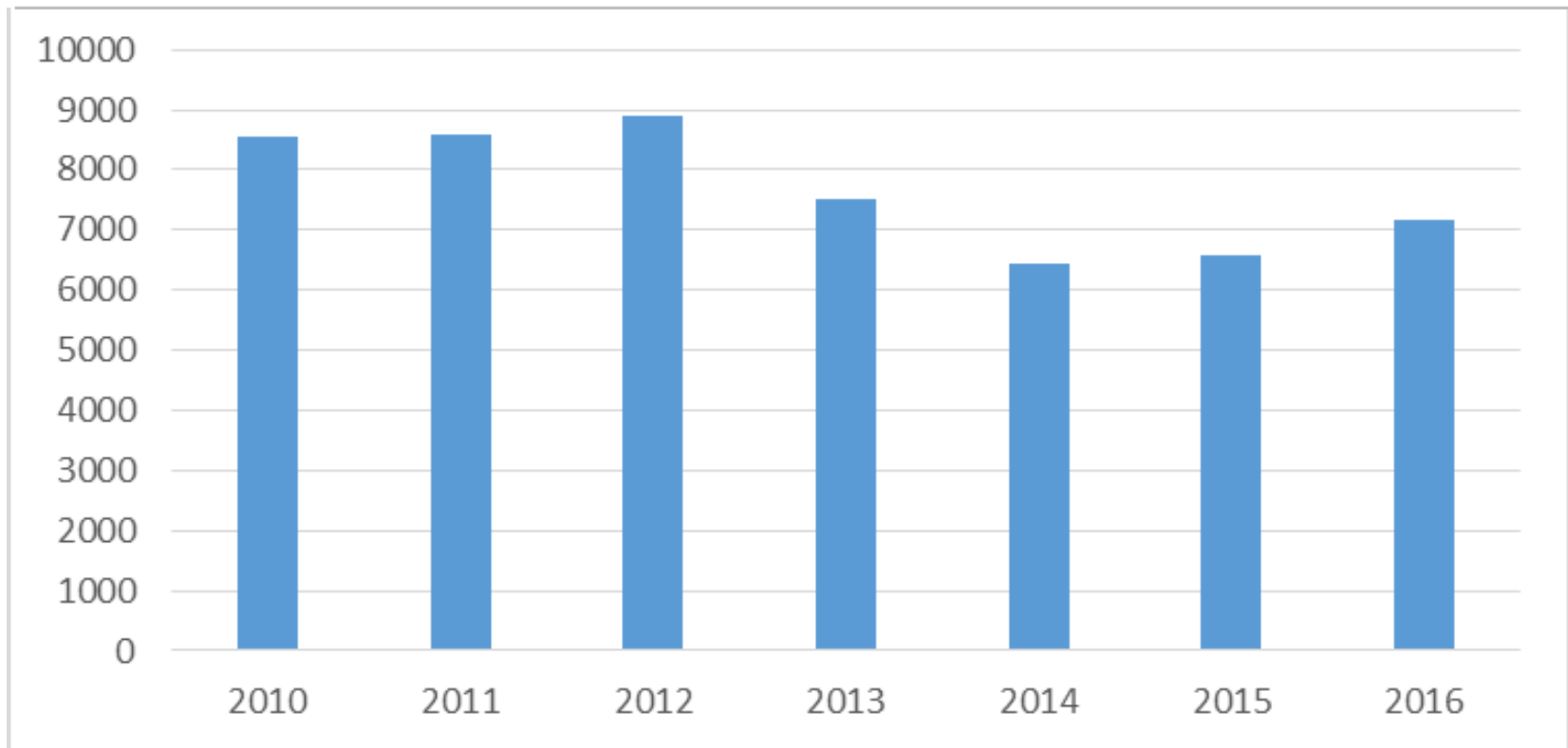
6: Shareholders Loans (\$000)



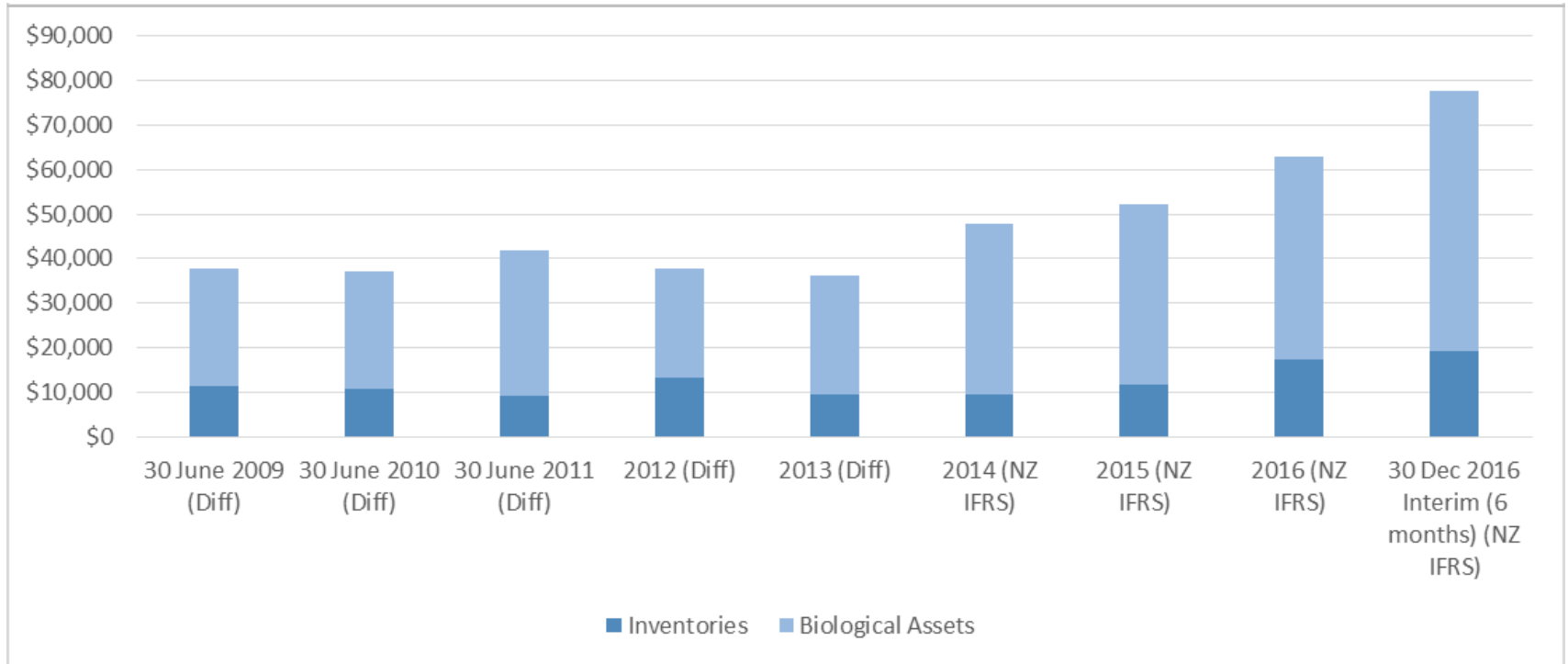
7: Excerpt from NZX of NZKS share prices



8: Fish Harvest pa Biomass (live weight) Kg (000)



9: Inventories and Biological Assets



10: Direct Labour from 2013 – 2016 (by calendar year)



Tuesday, 2 May 2017

Thank you



MCGUINNESS INSTITUTE