



# Fisheries (Event Reporting) Circular 2017

Draft 21 July 2017

## Issuing Authority

This circular is issued under regulation 47 of the Fisheries (Reporting) Regulations 2017 by xyz, acting under delegation from the Chief Executive of the Ministry for Primary Industries.

## Introduction

(This Introduction is not part of the circular but is provided to help users understand its background and broad purpose.)

The Fisheries (Reporting) Regulations 2017 impose new requirements on commercial fishers to provide MPI with electronic data relating to fish catches, catches of non-fish and protected fish species, processing, disposal, and landing. This will largely replace the existing paper-based reporting system. It will apply from 1 October 2017 for trawl vessels over 28 m, and to all other vessels and fishers from 1 April 2018.

This circular sets out the technical requirements for the new “e-logbooks” that commercial fishers will need to use to provide the required information. It also prescribes exactly what information must be provided, and how that information is to be transmitted to MPI. A key purpose of this circular is to provide developers of e-logbooks with the detail they need to design e-logbooks that will meet MPI’s requirements and the needs of fishers.

The codes to be used when completing e-logbooks, and instructions on how to complete the different types of reports, are set out in the Fisheries (Codes and Information) Circular.

<b>Contents</b>	<b>Page</b>
1 Title	4
2 Commencement	4
3 Purpose	4
4 Application and transitional arrangements	4
5 Definitions	4
<b>Part 1: E-logbooks</b>	<b>5</b>
6 Use of e-logbooks	5
7 E-logbooks to produce reports and records	5
8 Reports and records to have various states	5
9 Authentication of authorised users	6
10 Declarations	6
11 Summary reports	7
12 Transmission	7
13 Security of transmission	7
14 Integrity and non-repudiation of data	7
15 Storing data	7
16 Robustness of system	7
17 Devices	8
18 Business continuity	8
19 System of record	8
<b>Part 2: Event reports and trip records</b>	<b>8</b>
20 Trip records	8
21 Content of reports	8
22 Column headed "Mand."	8
23 Column headed "Data Type"	8
24 Column headed "Validation"	9
25 Completed Date Time	9
26 Greenweight Details Completed Date Time	9
<b>Schedule 1 – Trip Records</b>	<b>10</b>
Part 1A: Trip start details	10
Part 1B: Trip end details	10
<b>Schedule 2: Fish catch reports</b>	<b>12</b>
Part 2A: Trawl	12
Part 2B: Netting	14
Part 2C: Lining	16
Part 2D: Potting	18
Part 2E: Diving	20
Part 2F: Seining	23
Part 2G: Hand-Gathering	25
Part 2H: Dredging	27
Part 2I: Other-Lining	29
Part 2J: Tuna-Lining	31
Part 2K: Squid jigging	34
<b>Schedule 3: NFPS Reports</b>	<b>36</b>
<b>Schedule 4: Processing Reports</b>	<b>37</b>
<b>Schedule 5: Disposal Reports</b>	<b>39</b>
<b>Schedule 6: Landing Reports</b>	<b>40</b>

## 1 Title

- (1) This circular is the Fisheries (Event Reporting) Circular 2017.

## 2 Commencement

- (1) This circular comes into force on 1 October 2017.

## 3 Purpose

- (1) The purpose of this circular is—
- to set out the requirements of the electronic reporting system (in this circular referred to as an e-logbook) used by a permit holder when providing event reports; and
  - to specify the manner and form in which event reports and additional information is required to be in reports.

## 4 Application and transitional arrangements

- (1) This circular applies to all permit holders (as defined in regulation 3 of the Regulations).
- (2) However, between 1 October 2017 and 31 March 2018, the only permit holders who are required to comply with this circular are those fishing with vessels that exceed 28 m in length and using a trawl net. Other permit holders need not comply with this circular until 1 April 2018. (See Schedule 1 of the Regulations.)

## 5 Definitions

- (1) In this circular—

**Act** means the Fisheries Act 1996

**authorised user** means a person who is registered with the SDA as an authorised user in relation to—

- one or more specified permit holders; and
- one or more specified e-logbooks

**e-logbook** means an electronic system used by a permit holder to create event reports and transmit them to MPI

**record** means a trip start record or a trip end record, as set out in Part 1 of the Schedule

**report** means an event report of a type set out in Part 2, 3, 4, 5, or 6 of the Schedule, namely:

- fish catch reports;
- non-fish species or protected fish species catch reports;
- processing reports;
- disposal reports;
- landing reports

**MPI** means the Ministry for Primary Industries

**NFPS** means non-fish or protected species

**Regulations** means the Fisheries (Reporting) Regulations 2017

**relevant authorised user**, in relation to a report or record, means an authorised user who is registered with the SDA—

- for the particular e-logbook that is generating that report or record; and
- for the permit-holder who is generating that report or record

**SDA** means the service delivery agency that provides operational support to the commercial fishing industry under contract to MPI, and that receives reports and records from permit holders for further transmission to MPI following validation. (As at the date this circular comes into force, the SDA is Commercial Fisheries Services Ltd, operating as FishServe.)

- (2) Any term that is defined in the Act or Regulations and used but not defined in this circular has the meaning set out in the Act or Regulations. (Key terms defined in the Regulations include: **permit holder** and **fishing trip** or **trip**.)

## **Part 1: E-logbooks**

### **6 Use of e-logbooks**

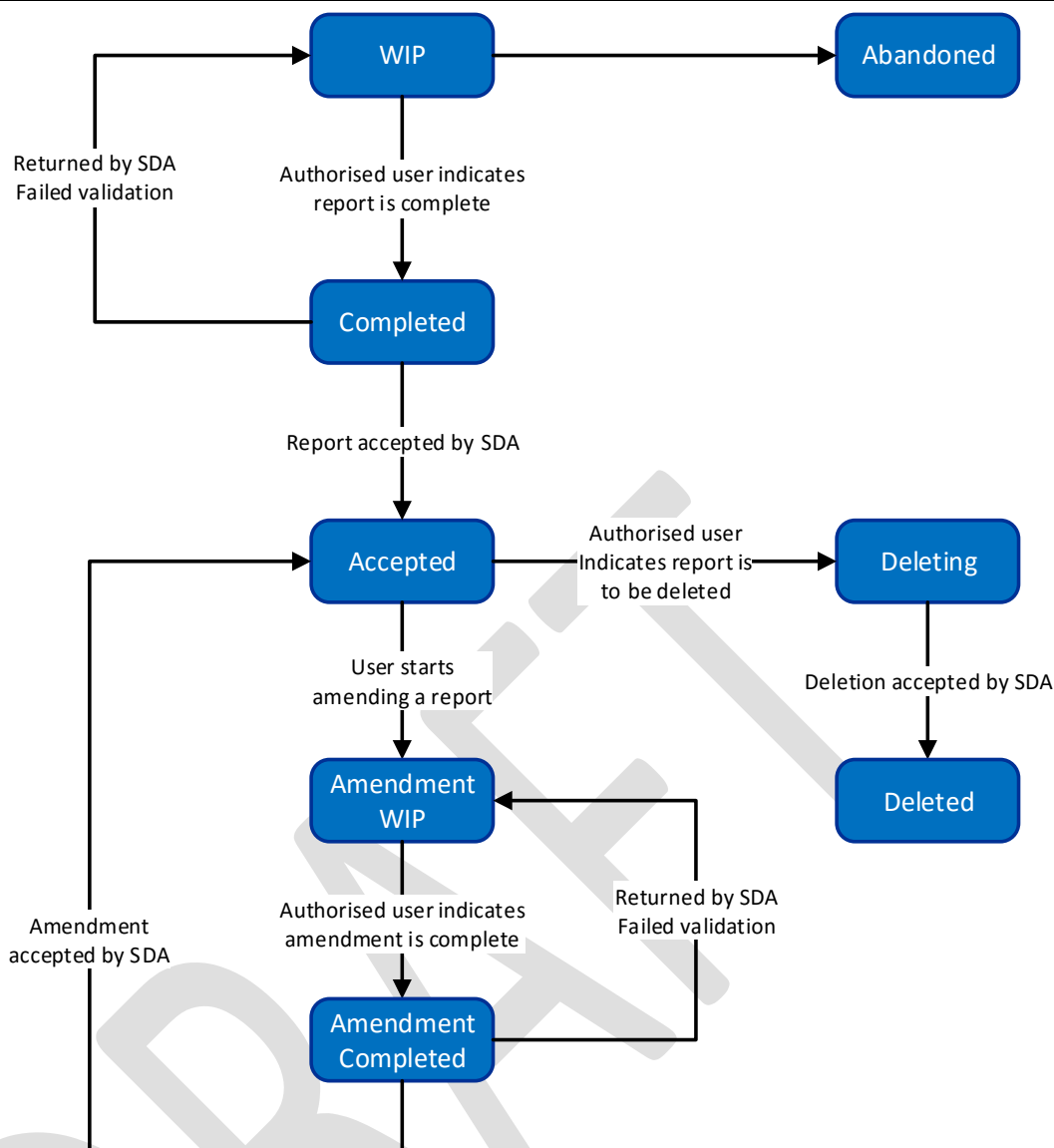
- (1) Every permit holder who is required by the Regulations to provide a report to MPI must do so using an e-logbook that—
  - a) complies with this circular; and
  - b) is registered with the SDA as in use by the permit holder.
- (2) The e-logbook may comprise any number of components as long as the system as a whole complies with the requirements of this circular.

### **7 E-logbooks to produce reports and records**

- (1) Every e-logbook must produce reports and records that—
  - a) comply with the requirements set out in the Schedules for reports and records of different types; and
  - b) accept as codes only those codes that are listed in the Fisheries (Reporting Codes) Circular 2017; and
  - c) give a unique identifier to each new event for which a report is generated and each new trip for which a new record is generated; and
  - d) record the current type and state of every report and record.
- (2) No part of an e-logbook may display the MPI logo or the crest of the New Zealand government.

### **8 Reports and records to have various states**

- (1) E-logbooks must provide for reports and records to exist in one of 8 states, as follows:
  - a) WIP (work in progress) – which means the report or record can be edited or deleted using the e-logbook:
  - b) Completed – which means the report or record has been signed off as Completed by a relevant authorised user and can no longer be edited using the e-logbook:
  - c) Accepted – which means that a Completed or Amendment Completed report or record has passed SDA validation and can no longer be edited using the e-logbook:
  - d) Amendment WIP – which means that a report or record that was Accepted has been changed to a state in which it can be amended by the user:
  - e) Amendment Completed – which means that a report or record in Amendment WIP state has been signed off as complete by an authorised user and can no longer be edited using the e-logbook:
  - f) Deleting – which means that a report or record that was Accepted has been marked as deleted by an authorised user:
  - g) Deleted – which means that a report or record with the state Deleting has been accepted by the SDA as deleted:
  - h) Abandoned – which means a WIP report that is abandoned before it is completed.
- (2) E-logbooks must enable the following processes:
  - a) when a new report or record is opened, it remains as WIP until an authorised user changes the state to Completed, or it is abandoned without being completed:
  - b) A WIP or Amendment WIP report or record can only be changed to Completed by a relevant authorised user:
  - c) only Completed or Amendment Completed reports and records can be transmitted to the SDA:
  - d) if a Completed or Amendment Completed report or record passes SDA validation, the state of the report or record in the e-logbook must change to Accepted:
  - e) if a Completed or Amendment Completed report or record does not pass SDA validation, it must be returned to WIP or Amendment WIP (as appropriate) for correction:
  - f) an Accepted report or record can be changed to Deleting only by a relevant authorised user.
  - g) a Deleting report or record can be changed to Deleted only when the SDA accepts the deletion.
- (3) The states, and some of the possible transitions between them, are summarised below. (If there is any conflict between the diagram and the rest of this clause, the rest of this clause prevails.)



## 9 Authentication of authorised users

- (1) E-logbooks must authenticate (by, for instance, the use of passwords, pin-numbers, or tokens) the identity of a person who claims to be a relevant authorised user, before the person can make a declaration referred to in clause 10.
- (2) An e-logbook must not hold or display, or be capable of holding or displaying, the password, pin number, or any other thing used to identify or authenticate an authorised user.

## 10 Declarations

- (1) E-logbooks must require that a declaration is completed before the status of a report or record is changed from WIP to Completed or from Amendment WIP to Amendment Completed.
- (2) The declaration must be to the following effect:
  - a) that the declaration is made by a relevant authorised user; and
  - b) the relevant authorised user is satisfied that the report is complete and correct in all respects.
- (3) E-logbooks must require that a declaration is completed before the status of a report or record is changed from Accepted to Deleting.
- (4) The declaration must be to the following effect:
  - a) that the declaration is made by a relevant authorised user; and
  - b) the relevant user is satisfied that there are good grounds for deleting the report.

## **11 Summary reports**

- (1) Every e-logbook must be able to generate summary reports of reports and records.
- (2) Summary reports must, at a minimum,—
  - a) allow drilling-down so that every field in any report or record (of whatever type or state) can be accessed via the summary report; and
  - b) allow reports and records be able to be displayed in reverse date order; and
  - c) allow users to filter event reports by type, state, and date of completion of report.
- (3) Summary reports must be able to be accessed, on the vessel on which the relevant reports and records were generated, by fisheries officers and fisheries observers.
- (4) Every device used to display summary reports, and the reports and records accessible via them, must display the reports and all fields in a readable format.

## **12 Transmission**

- (1) Every e-logbook must transmit reports and records—
  - a) to the SDA by the e-logbook that recorded the event or trip; and
  - b) in such a way that the SDA is able to receive them.
- (2) Every e-logbook must be able to transmit reports and records to the SDA within the times required by the Regulations.

## **13 Security of transmission**

- (1) Every e-logbook must be designed and operated to ensure that data contained in any report or record sent from a permit holder to the SDA cannot be changed by any third party.
- (2) Every e-logbook must ensure that reports and records transmitted between the permit holder and the SDA are encrypted during transmission.

## **14 Integrity and non-repudiation of data**

- (1) E-logbooks must ensure the integrity and non-repudiation of data contained in reports and records using the mechanisms described in this clause.
- (2) Every report and record must be digitally signed by the e-logbook when the state of the report or record is changed from WIP to Completed.
- (3) When a report or record is provided to the SDA, the digital signature must be included; and if it is not a valid signature, the report or record will not be accepted by the SDA.

## **15 Storing data**

- (1) Every e-logbook must save data, as it is entered, in such a way that it can be recovered if power is cut or the system is turned off.
- (2) Every e-logbook must store every report and record (including reports and records that are WIP, Amended WIP, Deleted, or Abandoned) in its latest state for a minimum of 90 days.

## **16 Robustness of system**

- (1) Every e-logbook must be designed and put together so that it operates reliably in the particular commercial fishing environment in which it is intended to operate.
- (2) Every e-logbook must be capable of—
  - a) operating in a poor connectivity environment; and
  - b) having fields completed while the system is off-line.

## 17 Devices

- (1) Each physical component of a device on which an e-logbook is operating must be suitable for use in the particular commercial fishing environment in which that component is intended to operate.

## 18 Business continuity

- (1) Every e-logbook must have a business continuity plan associated with it to provide for what happens if the e-logbook is unable to produce reports and records, or transmit them, as required by the Regulations and this circular.

## 19 System of record

- (1) Each report or record that is accepted and stored by the SDA is the authoritative record of that version of the report or record.

# Part 2: Event reports and trip records

## 20 Trip records

- (1) E-logbooks must ensure that a Trip ID cannot be entered in a report unless a trip start record for a trip with the same Trip ID has been completed.
- (2) E-logbooks must ensure that a landing report cannot be completed unless a trip end record for the trip with the same Trip ID has been completed.

## 21 Content of event reports

- (1) Each type of report must comply with the requirements set out in the Schedule for that type of report.

## 22 Column headed “Mand.”

- (1) In the Schedule, the column headed “Mand.” indicates whether an attribute is mandatory or not.
- (2) If an attribute that is indicated as mandatory (“Y”) is either not present or has a null value, the event report will not be accepted by the SDA.
- (3) If an attribute is indicated as conditional (“Cond”), it indicates that the attribute may become mandatory, depending on the value of another attribute.

## 23 Column headed “Data Type”

- (1) In the Schedules, the column headed “Data Type” indicates the kind of data that must be used to complete that field.
- (2) The reference to “GUID” means that a globally unique identifier is required. This must be in the form of a 36-string representing the hexadecimal form of a 128 bit integer (for example, 2226a625-af1c-4a94-a103-42514028684d).
- (3) The reference to “Datetime” means that a date and time is required. This must be in 24-hour date and time values with the UTC offset, as in YYYY-MM-DDhh:mm:ssTZD, where TZD is the time zone designator (+hh:mm or -hh:mm). For example, “2017-05-04T12:30:00+13:00” means the local time was 12.30 pm on 4 May 2017 and the time zone was 13 hours ahead of UTC.
- (4) The reference to Lat/Long means that a position reference giving latitude and longitude is required. This must be given as decimal values with exactly 4 decimal places, and must be validated—
  - a) for latitude, to between -90 and 90; and
  - b) for longitude, to between -180 and 180.
- (5) Other terms used in this column have the following meanings:



**integer** means a whole number

**string** means a sequence of characters (which can be numeric, alphabetic, or special characters)

**user token** means a security token of some kind that the e-logbook automatically includes in a report or record when an authorised user completes a declaration.

## **24 Column headed “Validation”**

- (1) In the Schedules, the column headed “Validation” sets out the validation that the SDA must carry out before a report will be accepted.

## **25 Completed Date Time**

- (1) The attribute “Completed Date Time” must be populated by the system when a WIP report or record is changed to Completed.
- (2) The datetime inserted must not be capable of being overridden by the user or reset by the e-logbook.

## **26 Greenweight Details Completed Date Time**

- (1) The attribute “Greenweight Details Completed Date Time” in a landing report must be populated by the system when—
  - a) the “Greenweight Details Completed?” is set to “Yes”; and
  - b) an authorised user completes a declaration to change the state of the report to Completed or Amendment Completed.
- (2) The datetime inserted must not be capable of being overridden by the user or reset by the e-logbook.

## Schedule 1 – Trip Records

### Part 1A: Trip start records

Attribute Name	Mand.	Data Type	Validation
Event ID	Y	GUID	Must be unique to the trip start record being created or amended.
Trip ID	Y	String	This <i>Trip ID</i> value must not already exist on another <i>Trip Start</i> record for the given Vessel Number, or for the given Client Number in the case of <i>Is Vessel Used</i> being <i>false</i> .
Client Number	Y	String	Must be a valid Client Number.
Is Vessel Used	Y	Boolean	
Vessel Number	Cond.	String	Must be provided if <i>Is Vessel Used</i> is <i>true</i> . If provided must be a valid vessel registration number.
Person In Charge	Y	String	
Start Date/Time (System)	Y	Datetime	
Start Location (System) - Latitude	Cond.	Lat/Long	These must be provided unless the <i>manual</i> latitude and longitude attributes have been populated.
Start Location (System) - Longitude	Cond.	Lat/Long	
Start Date/Time (Manual)	N	Datetime	
Start Location (Manual) - Latitude	Cond.	Lat/Long	These must be populated if the system latitude and longitude attributes couldn't be populated.
Start Location (Manual) - Longitude	Cond.	Lat/Long	
Amendment Reason	Cond.	String	Must not be populated when creating a trip start record. Must be populated when amending an existing trip start record.
Event Version	Cond.	Integer	Must not be populated when creating a trip start record. Must be populated when amending an existing trip start record. Must correspond to the current version number for the Event ID, as recorded by the SDA.
Notes	N	String	
Authorised User	Y	User Token	
Completed Date Time	Cond.	Datetime	Must be populated when creating a trip start record. Must not be populated when amending an existing trip start record.

### Part 1B: Trip end records

Attribute Name	Mand.	Data Type	Validation
Event ID	Y	GUID	Must be unique to the trip end record being created or amended.
Trip ID	Y	String	This <i>Trip ID</i> value must not exist on another <i>Trip End</i> record for the given Vessel Number, or for the given Client Number in the case of <i>Is Vessel Used</i> being <i>false</i> .
Client Number	Y	String	Must be a valid Client Number.
Is Vessel Used	Y	Boolean	
Vessel Number	Cond.	String	Must be provided if <i>Is Vessel Used</i> is <i>true</i> . If so, must be a valid vessel registration number.
Person In Charge	Y	String	
End Date/Time (System)	Y	Datetime	
End Location (System) - Latitude	Cond.	Lat/Long	These must be provided unless the <i>manual</i> latitude and longitude attributes have been populated.
End Location (System) - Longitude	Cond.	Lat/Long	
End Date/Time (Manual)	N	Datetime	
End Location (Manual) - Latitude	Cond.	Lat/Long	

Attribute Name	Mand.	Data Type	Validation
End Location (Manual) - Longitude	Cond.	Lat/Long	These must be populated if the <i>system</i> latitude and longitude attributes couldn't be populated.
Amendment Reason	Cond.	String	Must not be populated when creating a trip end record. Must be populated when amending an existing trip end record.
Event Version	Cond.	Integer	Must not be populated when creating a trip end record. Must be populated when amending an existing trip end record. Must correspond to the current version number for the Event ID, as recorded by the SDA.
Notes	N	String	
Authorised User	Y	User Token	
Completed Date Time	Cond.	Datetime	Must be populated when creating a trip end record. Must not be populated when amending an existing trip end record.

## Schedule 2: Fish catch reports

### Part 2A: Trawl

Attribute Name	Mand.	Data Type	Validation
Event ID	Y	GUID	Must be unique to the event being created or amended.
Trip ID	Y	String	
Client Number	Y	String	Must be a valid Client Number.
Is Vessel Used	Y	Boolean	Must be <i>true</i> .
Vessel Number	Y	String	Must be a valid vessel registration number.
Fishing Method Code	Y	String	Must be a valid Trawl method code.
Target Species Code	Y	String	Must be a valid species code.
Mitigation Device Codes	N	Array of Strings	Must be valid mitigation device codes.
Number of Nets	Y	Integer	Must be greater than zero.
Vessel Pair Number	N	String	If provided must be a valid vessel registration number.
Wing Spread Metres	Y	Integer	Must be greater than zero.
Headline Height Metres	Y	Decimal 2dp	Must be greater than zero.
Codend Mesh Size mm	Y	Integer	Must be greater than or equal to zero.
Ground Rope Depth Metres	Y	Integer	Must be greater than zero.
Bottom Depth Metres	Y	Integer	Must be greater than zero.
Speed Knots	Y	Decimal 2dp	Must be greater than zero.
Is Net Lost	Cond.	Boolean	Must be <i>true</i> if <i>Net at Depth</i> and <i>Net Leave Depth</i> location and time details could not be populated.
Start Date/Time (System)	Y	Datetime	
Start Latitude (System)	Cond.	Lat/Long	These must be provided unless the <i>manual</i> latitude and longitude attributes have been populated for the <i>start</i> location.
Start Longitude (System)	Cond.	Lat/Long	
Start Date/Time (Manual)	N	Datetime	
Start Latitude (Manual)	Cond.	Lat/Long	These must be populated if the <i>system</i> latitude and longitude attributes couldn't be populated for the <i>start</i> location.
Start Longitude (Manual)	Cond.	Lat/Long	
Net at Depth Date/Time (System)	Cond.	Datetime	These are required unless <i>Is Net Lost</i> is <i>true</i> . The <i>system</i> latitude and longitude values must be provided unless the <i>manual</i> equivalents are populated.
Net at Depth Latitude (System)	Cond.	Lat/Long	
Net at Depth Longitude (System)	Cond.	Lat/Long	
Net at Depth Date/Time (Manual)	N	Datetime	
Net at Depth Latitude (Manual)	Cond.	Lat/Long	These must be populated if the <i>system</i> location attributes for the <i>Net At Depth</i> position couldn't be populated (and the net wasn't lost).
Net at Depth Longitude (Manual)	Cond.	Lat/Long	
Net Leave Depth Date/Time (System)	Cond.	Datetime	These are required unless <i>Is Net Lost</i> is <i>true</i> . The <i>system</i> latitude and longitude values must be provided unless the <i>manual</i> equivalents are populated.
Net Leave Depth Latitude (System)	Cond.	Lat/Long	
Net Leave Depth Longitude (System)	Cond.	Lat/Long	
Net Leave Depth Date/Time (Manual)	N	Datetime	
Net Leave Depth Latitude (Manual)	Cond.	Lat/Long	These must be populated if the <i>system</i> location attributes for the <i>Net Leave Depth</i> position couldn't be populated (and the net wasn't lost).
Net Leave Depth Longitude (Manual)	Cond.	Lat/Long	
Finish Date/Time (System)	Y	Datetime	
Finish Latitude (System)	Cond.	Lat/Long	These must be provided unless the <i>manual</i> latitude and longitude attributes have been populated for the <i>finish</i> location.
Finish Longitude (System)	Cond.	Lat/Long	
Finish Date/Time (Manual)	N	Datetime	

Attribute Name	Mand.	Data Type	Validation
Finish Latitude (Manual)	Cond.	Lat/Long	These must be populated if the <i>system</i> latitude and longitude attributes couldn't be populated for the <i>finish</i> location.
Finish Longitude (Manual)	Cond.	Lat/Long	
Total Estimated Catch Kg	Y	Decimal 2dp	Must be greater than or equal to zero.
Catches	Cond.	Array of Catch records	See below for validation details.
Is NFPS Catch Present	Y	Boolean	
NFPS Catches	Cond.	Array of NFPS Catch records	See below for validation details.
Amendment Reason	Cond.	String	Must not be populated when creating an event report. Must be populated when amending an existing event report.
Event Version	Cond.	Integer	Must not be populated when creating an event report. Must be populated when amending an existing event report. Must correspond to the current version number for the Event ID, as recorded by the SDA.
Notes	N	String	
Authorised User	Y	User Token	
Completed Date Time	Cond.	Datetime	Must be populated when creating an event report. Must not be populated when amending an existing event report.

Note that the colours in the table above have no specific meaning. They are just intended as a visual distinction between the four sets of datetime/position data sets.

## Catch Records

The trawl report can contain zero or many Catch records. If *Total Estimated Catch Kg* is greater than zero then at least one Catch record must be provided.

Attribute Name	Mand.	Data Type	Validation
Species Code	Y	String	Must be a valid species code.
Greenweight Estimate Kg	Y	Decimal 2dp	Must be greater than or equal to zero.

## NFPS Catch Records

The trawl report can contain zero or many NFPS Catch records. At least one NFPS Catch record is required if *Is NFPS Catch Present* was reported as *true*.

Attribute Name	Mand.	Data Type	Validation
NFPS Species Code	Y	String	Must be a valid NFPS species code.
Number Uninjured	Cond.	Integer	At least one of these three values must be populated, and be greater than zero, for birds, mammals, reptiles and fish.
Number Injured	Cond.	Integer	
Number Dead	Cond.	Integer	
Estimated Weight Kg	Cond.	Decimal 2dp	Must be provided, and be greater than zero, for corals, sponges and bryozoans.
Seabird Capture Code	Cond.	String	Must be provided if the NFPS is a seabird. Must be a valid Seabird Capture Code.
Tags	N	Array of strings	

## Part 2B: Netting

Attribute Name	Mand.	Data Type	Validation
Event ID	Y	GUID	Must be unique to the event being created or amended.
Client Number	Y	String	Must be a valid Client Number.
Is Vessel Used	Y	Boolean	
Vessel Number	Cond.	String	Must be provided if <i>Is Vessel Used</i> is true. If so, must be a valid vessel registration number.
Fishing Method Code	Y	String	Must be a valid Netting method code.
Target Species Code	Y	String	Must be a valid species code.
Mitigation Device Codes	N	Array of Strings	Must be valid mitigation device codes.
Number of Nets	Y	Integer	Must be greater than zero.
Total Length of Nets Metres	Y	Decimal 2dp	Must be greater than zero.
Min Mesh Size Mm	Y	Integer	Must be greater than zero.
Net Height	Y	Integer	Must be greater than zero.
Is Net Lost	Cond.	Boolean	If this is true the <i>End Of Set</i> and <i>Start Of Haul</i> details are not required.
Start Date/Time (System)	Y	Datetime	
Start Latitude (System)	Cond.	Lat/Long	These must be provided unless the <i>manual</i> latitude and longitude attributes have been populated for the <i>start</i> location.
Start Longitude (System)	Cond.	Lat/Long	
Start Date/Time (Manual)	N	Datetime	
Start Latitude (Manual)	Cond.	Lat/Long	These must be populated if the <i>system</i> latitude and longitude attributes couldn't be populated for the <i>start</i> location.
Start Longitude (Manual)	Cond.	Lat/Long	
End Of Set Date/Time (System)	Cond.	Datetime	
End Of Set Latitude (System)	Cond.	Lat/Long	Required unless <i>Is Net Lost</i> is true. The <i>system</i> latitude and longitude values must be provided unless the <i>manual</i> equivalents are populated.
End Of Set Longitude (System)	Cond.	Lat/Long	
End Of Set Date/Time (Manual)	N	Datetime	
End Of Set Latitude (Manual)	Cond.	Lat/Long	These must be populated if the <i>system</i> latitude and longitude attributes for the <i>End Of Set</i> position couldn't be populated (and the net wasn't lost).
End Of Set Longitude (Manual)	Cond.	Lat/Long	
Start Of Haul Date/Time (System)	Cond.	Datetime	
Start Of Haul Latitude (System)	Cond.	Lat/Long	Required unless <i>Is Net Lost</i> is true. The <i>system</i> latitude and longitude values must be provided unless the <i>manual</i> equivalents are populated.
Start Of Haul Longitude (System)	Cond.	Lat/Long	
Start Of Haul Date/Time (Manual)	N	Datetime	
Start Of Haul Latitude (Manual)	Cond.	Lat/Long	These must be populated if the <i>system</i> latitude and longitude attributes for the <i>Start Of Haul</i> position couldn't be populated (and the net wasn't lost).
Start Of Haul Longitude (Manual)	Cond.	Lat/Long	
Finish Date/Time (System)	Y	Datetime	
Finish Latitude (System)	Cond.	Lat/Long	These must be provided unless the <i>manual</i> latitude and longitude attributes have been populated for the <i>finish</i> location.
Finish Longitude (System)	Cond.	Lat/Long	
Finish Date/Time (Manual)	N	Datetime	
Finish Latitude (Manual)	Cond.	Lat/Long	These must be populated if the <i>system</i> latitude and longitude attributes couldn't be populated for the <i>finish</i> location.
Finish Longitude (Manual)	Cond.	Lat/Long	
Trip ID	Y	String	
Catches	N	Array of Catch records	

Attribute Name	Mand.	Data Type	Validation
Estimated Greenweight Of All Other Species Kg	N	Decimal 2dp	If provided must be greater than or equal to zero.
Is Non Fish Or Protected Species Catch Present	Y	Boolean	
NFPS Catches	Cond.	Array of NFPS Catch records	See below for validation details.
Amendment Reason	Cond.	String	Must not be populated when creating an event report. Must be populated when amending an existing event report.
Event Version	Cond.	Integer	Must not be populated when creating an event report. Must be populated when amending an existing event report. Must correspond to the current version number for the Event ID, as recorded by the SDA.
Notes	N	String	
Authorised User	Y	User Token	
Completed Date Time	Cond.	Datetime	Must be populated when creating an event report. Must not be populated when amending an existing event report.

Note that the colours in the table above have no specific meaning. They are just intended as a visual distinction between the four sets of datetime/position data sets.

## Catch Records

The netting report can contain zero or many Catch records.

Attribute Name	Mand.	Data Type	Validation
Species Code	Y	String	Must be a valid species code.
Greenweight Estimate Kg	Y	Decimal 2dp	Must be greater than or equal to zero.

## NFPS Catch Records

The netting report can contain zero or many NFPS Catch records. At least one NFPS Catch record is required if *Is NFPS Catch Present* was reported as *true*.

Attribute Name	Mand.	Data Type	Validation
NFPS Species Code	Y	String	Must be a valid NFPS species code.
Number Uninjured	Cond.	Integer	At least one of these three values must be populated, and be greater than zero, for birds, mammals, reptiles and fish.
Number Injured	Cond.	Integer	
Number Dead	Cond.	Integer	
Estimated Weight Kg	Cond.	Decimal 2dp	Must be provided, and be greater than zero, for corals, sponges and bryozoans.
Tags	N	Array of strings	



## Part 2C: Lining

Attribute Name	Mand.	Data Type	Validation
Event ID	Y	GUID	Must be unique to the event being created or amended.
Trip ID	Y	String	
Client Number	Y	String	Must be a valid Client Number.
Is Vessel Used	Y	Boolean	Must be <i>true</i> .
Vessel Number	Y	String	Must be a valid vessel registration number.
Fishing Method Code	Y	String	Must be a valid Lining method code.
Target Species Code	Y	String	Must be a valid species code.
Mitigation Device Codes	N	Array of Strings	Must be valid mitigation device codes.
Hook Space Metres	Y	Decimal 2dp	Must be greater than zero.
Number of Hooks	Y	Integer	Must be greater than zero.
Bottom Depth Metres	Y	Integer	Must be greater than zero.
Is Line Lost	Cond.	Boolean	Must be <i>true</i> if <i>End Of Set</i> or <i>Start Of Haul</i> location and time details could not be populated and method is not DL.
Number Of Lines Hauled	Cond.	Integer	Must be provided if method is DL.
Start Date/Time (System)	Y	Datetime	
Start Latitude (System)	Cond.	Lat/Long	These must be provided unless the <i>manual</i> latitude and longitude attributes have been populated for the <i>start</i> location.
Start Longitude (System)	Cond.	Lat/Long	
Start Date/Time (Manual)	N	Datetime	
Start Latitude (Manual)	Cond.	Lat/Long	These must be populated if the <i>system</i> latitude and longitude attributes couldn't be populated for the <i>start</i> location.
Start Longitude (Manual)	Cond.	Lat/Long	
End Of Set Date/Time (System)	Cond.	Datetime	
End Of Set Latitude (System)	Cond.	Lat/Long	Must be provided if <i>method</i> is BLL or TL and <i>Is Line Lost</i> is not <i>true</i> . Not required if method is DL. The <i>system</i> latitude and longitude values must be provided unless the <i>manual</i> equivalents are populated.
End Of Set Longitude (System)	Cond.	Lat/Long	
End Of Set Date/Time (Manual)	N	Datetime	
End Of Set Latitude (Manual)	Cond.	Lat/Long	These must be populated if the <i>system</i> latitude and longitude attributes for the <i>End Of Set</i> position couldn't be populated (and the line wasn't lost and method isn't DL).
End Of Set Longitude (Manual)	Cond.	Lat/Long	
Start Of Haul Date/Time (System)	Cond.	Datetime	
Start Of Haul Latitude (System)	Cond.	Lat/Long	Must be provided if method is BLL or TL and <i>Is Line Lost</i> is not <i>true</i> . Not required if method is DL. The <i>system</i> latitude and longitude values must be provided unless the <i>manual</i> equivalents are populated.
Start Of Haul Longitude (System)	Cond.	Lat/Long	
Start Of Haul Date/Time (Manual)	N	Datetime	
Start Of Haul Latitude (Manual)	Cond.	Lat/Long	These must be populated if the <i>system</i> latitude and longitude attributes for the <i>Start of Haul</i> position couldn't be populated (and the line wasn't lost and method isn't DL).
Start Of Haul Longitude (Manual)	Cond.	Lat/Long	
Finish Date/Time (System)	Y	Datetime	
Finish Latitude (System)	Cond.	Lat/Long	These must be provided unless the <i>manual</i> latitude and longitude attributes have been populated for the <i>finish</i> location.
Finish Longitude (System)	Cond.	Lat/Long	
Finish Date/Time (Manual)	N	Datetime	
Finish Latitude (Manual)	Cond.	Lat/Long	These must be populated if the <i>system</i> latitude and longitude attributes couldn't be populated for the <i>finish</i> location.
Finish Longitude (Manual)	Cond.	Lat/Long	
Catches	N	Array of Catch records	



Attribute Name	Mand.	Data Type	Validation
Estimated Greenweight Of All Other Species Kg	N	Decimal 2dp	If provided must be greater than or equal to zero.
Is NFPS Catch Present	Y	Boolean	
NFPS Catches	Cond.	Array of NFPS Catch records	See below for validation details.
Amendment Reason	Cond.	String	Must not be populated when creating an event report. Must be populated when amending an existing event report.
Event Version	Cond.	Integer	Must not be populated when creating an event report. Must be populated when amending an existing event report. Must correspond to the current version number for the Event ID, as recorded by the SDA.
Notes	N	String	
Authorised User	Y	User Token	
Completed Date Time	Cond.	Datetime	Must be populated when creating an event report. Must not be populated when amending an existing event report.

### Catch Records

The lining report contain zero or many Catch records.

Attribute Name	Mand.	Data Type	Validation
Species Code	Y	String	Must be a valid species code.
Greenweight Estimate Kg	Y	Decimal 2dp	Must be greater than or equal to zero.

### NFPS Catch Records

The lining report can contain zero or many NFPS Catch records. At least one NFPS Catch record is required if the *Is NFPS Catch Present* was reported as *true*.

Attribute Name	Mand.	Data Type	Validation
NFPS Species Code	Y	String	Must be a valid NFPS species code.
Number Uninjured	Cond.	Integer	At least one of these three values must be populated, and be greater than zero, for birds, mammals, reptiles and fish.
Number Injured	Cond.	Integer	
Number Dead	Cond.	Integer	
Estimated Weight Kg	Cond.	Decimal 2dp	Must be provided, and be greater than zero, for corals, sponges and bryozoans.
Seabird Capture Code	Cond.	String	Must be provided if the NFPS is a seabird. Must be a valid Seabird Capture Code.
Tags	N	Array of strings	

## Part 2D: Potting

Attribute Name	Mand.	Data Type	Validation
Event ID	Y	GUID	Must be unique to the event being created or amended.
Trip ID	Y	String	
Client Number	Y	String	Must be a valid Client Number.
Is Vessel Used	Y	Boolean	
Vessel Number	Cond.	String	Must be provided if <i>Is Vessel Used</i> is <i>true</i> . If so, must be a valid vessel registration number.
Fishing Method Code	Y	String	Must be a valid Potting method code.
Target Species Code	Y	String	Must be a valid species code.
Number of Lifts	Y	Integer	Greater than or equal to zero.
Soak Time Hours	Y	Integer	Greater than or equal to zero.
Start Date/Time (System)	Y	Datetime	
Start Latitude (System)	Cond.	Lat/Long	These must be provided unless the <i>manual</i> latitude and longitude attributes have been populated for the <i>start</i> location.
Start Longitude (System)	Cond.	Lat/Long	
Start Date/Time (Manual)	N	Datetime	
Start Latitude (Manual)	Cond.	Lat/Long	These must be populated if the <i>system</i> latitude and longitude attributes couldn't be populated for the <i>start</i> location.
Start Longitude (Manual)	Cond.	Lat/Long	
Finish Date/Time (System)	Y	Datetime	
Finish Latitude (System)	Cond.	Lat/Long	These must be provided unless the <i>manual</i> latitude and longitude attributes have been populated for the <i>finish</i> location.
Finish Longitude (System)	Cond.	Lat/Long	
Finish Date/Time (Manual)	N	Datetime	
Finish Latitude (Manual)	Cond.	Lat/Long	These must be populated if the <i>system</i> latitude and longitude attributes couldn't be populated for the <i>finish</i> location.
Finish Longitude (Manual)	Cond.	Lat/Long	
Catches	N	Array of Catch records	
Is NFPS Catch Present	Y	Boolean	
NFPS Catches	Cond.	Array of NFPS Catch records	See below for validation details.
Amendment Reason	Cond.	String	Must not be populated when creating an event report. Must be populated when amending an existing event report.
Event Version	Cond.	Integer	Must not be populated when creating an event report. Must be populated when amending an existing event report. Must correspond to the current version number for the Event ID, as recorded by the SDA.
Notes	N	String	
Authorised User	Y	User Token	
Completed Date Time	Cond.	Datetime	Must be populated when creating an event report. Must not be populated when amending an existing event report.

### Catch Records

The potting report can contain zero or many Catch records.

Attribute Name	Mand.	Data Type	Validation
Species Code	Y	String	Must be a valid species code.
Greenweight Estimate Kg	Y	Decimal 2dp	Must be greater than or equal to zero.

### NFPS Catch Records

The potting report can contain zero or many NFPS Catch records. At least one NFPS Catch record is required if the *Is NFPS Catch Present* was reported as *true*.

Attribute Name	Mand.	Data Type	Validation
NFPS Species Code	Y	String	Must be a valid NFPS species code.
Number Uninjured	Cond.	Integer	At least one of these three values must be populated, and be greater than zero, for birds, mammals, reptiles and fish.
Number Injured	Cond.	Integer	
Number Dead	Cond.	Integer	
Estimated Weight Kg	Cond.	Decimal 2dp	Must be provided, and be greater than zero, for corals, sponges and bryozoans.
Tags	N	Array of strings	

DRAFT

## Part 2E: Diving

Attribute Name	Mand.	Data Type	Validation
Event ID	Y	GUID	Must be unique to the event being created or amended.
Trip ID	Y	String	
Client Number	Y	String	Must be a valid Client Number.
Is Vessel Used	Y	Boolean	
Vessel Number	Cond.	String	Must be provided if <i>Is Vessel Used</i> is true. If so, must be a valid vessel registration number.
Fishing Method Code	Y	String	Must be a valid Diving method code.
Target Species Code	Y	String	Must be a valid species code.
Swell Metres	Y	Decimal 2dp	Must be greater than or equal to zero.
Visibility Metres	Y	Integer	Must be greater than or equal to zero.
Was Boat Person Used	Cond.	Boolean	Must be provided if <i>Target Species Code</i> is PAU, PAA or PAI.
Is NFPS Catch Present	Y	Boolean	
NFPS Catch Records	Cond.	Array of NFPS Catch records	See below for validation details.
Divers	Y	Array of Diver Records	
Amendment Reason	Cond.	String	Must not be populated when creating an event report. Must be populated when amending an existing event report.
Event Version	Cond.	Integer	Must not be populated when creating an event report. Must be populated when amending an existing event report. Must correspond to the current version number for the Event ID, as recorded by the SDA.
Notes	N	String	
Authorised User	Y	User Token	
Completed Date Time	Cond.	Datetime	Must be populated when creating an event report. Must not be populated when amending an existing event report.

### Diver Records

The diving fish catch report may include *one* or *many* Diver records in the Diver array; it must include at least one Diver record.

Attribute Name	Mand.	Data Type	Validation
Diver ID or Name	Y	String	
Total Diving Time Hours	Y	Integer	Must be greater than, or equal to, zero.
Total Diving Time Minutes	Y	Integer	Must be between 0 and 59, inclusive.
Start Date/Time (System)	Y	Datetime	
Start Latitude (System)	Cond.	Lat/Long	These must be provided unless the <i>manual</i> latitude and longitude attributes have been populated for the <i>start</i> location for the Diver record.
Start Longitude (System)	Cond.	Lat/Long	
Start Date/Time (Manual)	N	Datetime	
Start Latitude (Manual)	Cond.	Lat/Long	These must be populated if the <i>system</i> latitude and longitude attributes couldn't be populated for the <i>start</i> location for the Diver record.
Start Longitude (Manual)	Cond.	Lat/Long	
Finish Date/Time (System)	Y	Datetime	
Finish Latitude (System)	Cond.	Lat/Long	These must be provided unless the <i>manual</i> latitude and longitude attributes have been populated for the <i>finish</i> location for the Diver record.
Finish Longitude (System)	Cond.	Lat/Long	
Finish Date/Time (Manual)	N	Datetime	
Finish Latitude (Manual)	Cond.	Lat/Long	These must be populated if the <i>system</i> latitude and longitude attributes couldn't be populated for the <i>finish</i> location for the Diver record.
Finish Longitude (Manual)	Cond.	Lat/Long	
Diver Catches	N	Array of diver catch records.	

## Diver Catch Records

Each diver's catch must be reported in the Diver Catch Array under that diver record. A given Diver can have *zero* or *many* Diver Catch records.

Attribute Name	Mand.	Data Type	Validation
Species Code	Y	String	Must be a valid species code, other than "PAU".
Estimated Catch Kg	Y	Decimal 2dp	Must be greater than zero.

## NFPS Catch Records

The diving report can contain zero or many NFPS Catch records. At least one NFPS Catch record is required if the *Is NFPS Catch Present* was reported as *true*.

Attribute Name	Mand.	Data Type	Validation
NFPS Species Code	Y	String	Must be a valid NFPS species code.
Number Uninjured	Cond.	Integer	At least one of these three values must be populated, and be greater than zero, for birds, mammals, reptiles and fish.
Number Injured	Cond.	Integer	
Number Dead	Cond.	Integer	
Estimated Weight Kg	Cond.	Decimal 2dp	Must be provided, and be greater than zero, for corals, sponges and bryozoans.
Tags	N	Array of strings	

## Example of a diving report

The following is an example of a single diving report.

Attribute Name					
Event ID	d127f941-1476-4ff2-a...				
Trip ID	Sam 12				
Client Number	9790123				
Is Vessel Used	true				
Vessel Number	54123				
Fishing Method Code	DI				
Target Species Code	PAU				
Swell Metres	1.2				
Visibility Metres	8				
Was Boat Person Used	true				
Is NFPS Catch Present	false				
Notes					
Authorised User	{Ethan Martel}				
Completed Date Time	2017-04-05T16:09:54+11:00				
<b>Diver Records</b>					
Diver ID/Name		ID123		ID789	
Start Date/Time (System)		2017-04-05T09:15:12+11:00		2017-04-05T09:22:07+11:00	
Start Latitude (System)		-42.4260		-42.4251	
Start Longitude (System)		173.7155		173.7180	
Finish Date/Time (System)		2017-04-05T14:29:32+11:00		2017-04-05T14:41:17+11:00	
Finish Latitude (System)		-42.4288		-42.4236	
Finish Longitude (System)		173.7141		173.7193	
Total Diving Time Hours		5		5	
Total Diving Time Minutes		14		19	
<b>Diver Catch Records</b>					
Species Code		PAA	PAI	PAA	PAI
Estimated Catch Kg		20.1	5.2	30.1	15.5

## Part 2F: Seining

Attribute Name	Mand.	Data Type	Validation
Event ID	Y	GUID	Must be unique to the event being created or amended.
Trip ID	Y	String	
Client Number	Y	String	Must be a valid Client Number.
Is Vessel Used	Y	Boolean	Must be <i>true</i> for methods DS, DPS, PS and L. Can be <i>true</i> or <i>false</i> for BS, DPN or SCN.
Vessel Number	Cond.	String	Must be provided if <i>Is Vessel Used</i> is <i>true</i> . If so, must be a valid vessel registration number.
Fishing Method Code	Y	String	Must be a valid Seining method code.
Target Species Code	Y	String	Must be a valid species code.
Mitigation Device Codes	N	Array of Strings	Must be valid Mitigation Device Code(s).
Total Net Length And Warps Metres	Cond.	Integer	Must be greater than zero for all seining methods other than DPN (Dip Net) and SCN (Scoop Net). Must not be provided for DPN or SCN.
Ground Rope Length Metres	Cond.	Integer	Must be greater than zero for Danish seining methods (DS and DPS). Must not be populated for other methods.
Is Spotter Used	Cond.	Boolean	Must be provided for PS (Purse Seine). Must not be populated for other methods.
Spotter Call Sign	Cond.	String	Must be provided if <i>Is Spotter Used</i> is <i>true</i> .
Number of Lifts	Cond.	Integer	Must be greater than zero for DPN (Dip Net) and SCN (Scoop Net). Must not be provided for other methods.
Start Date/Time (System)	Y	Datetime	
Start Latitude (System)	Cond.	Lat/Long	These must be provided unless the <i>manual</i> latitude and longitude attributes have been populated for the <i>start</i> location.
Start Longitude (System)	Cond.	Lat/Long	
Start Date/Time (Manual)	N	Datetime	
Start Latitude (Manual)	Cond.	Lat/Long	These must be populated if the <i>system</i> latitude and longitude attributes couldn't be populated for the <i>start</i> location.
Start Longitude (Manual)	Cond.	Lat/Long	
Finish Date/Time (System)	Y	Datetime	
Finish Latitude (System)	Cond.	Lat/Long	These must be provided unless the <i>manual</i> latitude and longitude attributes have been populated for the <i>finish</i> location.
Finish Longitude (System)	Cond.	Lat/Long	
Finish Date/Time (Manual)	N	Datetime	
Finish Latitude (Manual)	Cond.	Lat/Long	These must be populated if the <i>system</i> latitude and longitude attributes couldn't be populated for the <i>finish</i> location.
Finish Longitude (Manual)	Cond.	Lat/Long	
Total Estimated Catch Kg	Y	Decimal 2dp	Must be greater than or equal to zero.
Catches	N	Array of Catch records	
Is NFPS Catch Present	Y	Boolean	
NFPS Catches	Cond.	Array of NFPS Catch records	See below for validation details.
Amendment Reason	Cond.	String	Must not be populated when creating an event report. Must be populated when amending an existing event report.
Event Version	Cond.	Integer	Must not be populated when creating an event report. Must be populated when amending an existing event report. Must correspond to the current version number for the Event ID, as recorded by the SDA.
Notes	N	String	
Authorised User	Y	User Token	
Completed Date Time	Cond.	Datetime	Must be populated when creating an event report. Must not be populated when amending an existing event report.

## Catch Records

The seining report can contain zero or many Catch records. If *Total Estimated Catch Kg* is greater than zero then at least one Catch record must be provided.

Attribute Name	Mand.	Data Type	Validation
Species Code	Y	String	Must be a valid species code.
Greenweight Estimate Kg	Y	Decimal 2dp	Must be greater than or equal to zero.

## NFPS Catch Records

The seining report can contain zero or many NFPS Catch records. At least one NFPS Catch record is required if the *Is NFPS Catch Present* was reported as *true*.

Attribute Name	Mand.	Data Type	Validation
NFPS Species Code	Y	String	Must be a valid NFPS species code.
Number Uninjured	Cond.	Integer	At least one of these three values must be populated, and be greater than zero, for birds, mammals, reptiles and fish.
Number Injured	Cond.	Integer	
Number Dead	Cond.	Integer	
Estimated Weight Kg	Cond.	Decimal 2dp	Must be provided, and be greater than zero, for corals, sponges and bryozoans.
Tags	N	Array of strings	



## Part 2G: Hand-Gathering

Attribute Name	Mand.	Data Type	Validation
Event ID	Y	GUID	Must be unique to the event being created or amended.
Trip ID	Y	String	
Client Number	Y	String	Must be a valid Client Number.
Is Vessel Used	Y	Boolean	
Vessel Number	Cond.	String	Must be provided if <i>Is Vessel Used</i> is <i>true</i> . If so, must be a valid vessel registration number.
Fishing Method Code	Y	String	Must be "H".
Target Species Code	Y	String	Must be a valid species code.
Number of People	Y	Integer	Must be greater than zero.
Time Spent Hours	Y	Integer	Must be greater than zero.
Start Date/Time (System)	Y	Datetime	
Start Latitude (System)	Cond.	Lat/Long	These must be provided unless the <i>manual</i> latitude and longitude attributes have been populated for the <i>start</i> location.
Start Longitude (System)	Cond.	Lat/Long	
Start Date/Time (Manual)	N	Datetime	
Start Latitude (Manual)	Cond.	Lat/Long	These must be populated if the <i>system</i> latitude and longitude attributes couldn't be populated for the <i>start</i> location.
Start Longitude (Manual)	Cond.	Lat/Long	
Finish Date/Time (System)	Y	Datetime	
Finish Latitude (System)	Cond.	Lat/Long	These must be provided unless the <i>manual</i> latitude and longitude attributes have been populated for the <i>finish</i> location.
Finish Longitude (System)	Cond.	Lat/Long	
Finish Date/Time (Manual)	N	Datetime	
Finish Latitude (Manual)	Cond.	Lat/Long	These must be populated if the <i>system</i> latitude and longitude attributes couldn't be populated for the <i>finish</i> location.
Finish Longitude (Manual)	Cond.	Lat/Long	
Catches	N	Array of Catch records	
Is NFPS Catch Present	Y	Boolean	
NFPS Catches	Cond.	Array of NFPS Catch records	See below for validation details.
Amendment Reason	Cond.	String	Must not be populated when creating an event report. Must be populated when amending an existing event report.
Event Version	Cond.	Integer	Must not be populated when creating an event report. Must be populated when amending an existing event report. Must correspond to the current version number for the Event ID, as recorded by the SDA.
Notes	N	String	
Authorised User	Y	User Token	
Completed Date Time	Cond.	Datetime	Must be populated when creating an event report. Must not be populated when amending an existing event report.

### Catch Records

The handgathering report can contain zero or many Catch records.

Attribute Name	Mand.	Data Type	Validation
Species Code	Y	String	Must be a valid species code.
Greenweight Estimate Kg	Y	Decimal 2dp	Must be greater than or equal to zero.

### NFPS Catch Records

The handgathering report can contain zero or many NFPS Catch records. At least one NFPS Catch record is required if the *Is NFPS Catch Present* was reported as *true*.

Attribute Name	Mand.	Data Type	Validation
NFPS Species Code	Y	String	Must be a valid NFPS species code.

Attribute Name	Mand.	Data Type	Validation
Number Uninjured	Cond.	Integer	At least one of these three values must be populated, and be greater than zero, for birds, mammals, reptiles and fish.
Number Injured	Cond.	Integer	
Number Dead	Cond.	Integer	
Estimated Weight Kg	Cond.	Decimal 2dp	Must be provided, and be greater than zero, for corals, sponges and bryozoans.
Tags	N	Array of strings	

DRAFT

## Part 2H: Dredging

Attribute Name	Mand.	Data Type	Validation
Event ID	Y	GUID	Must be unique to the event being created or amended.
Trip ID	Y	String	
Client Number	Y	String	Must be a valid Client Number.
Is Vessel Used	Y	Boolean	Must be <i>true</i> for dredging (D), otherwise can be <i>true</i> or <i>false</i> .
Vessel Number	Cond.	String	Must be provided if <i>Is Vessel Used</i> is <i>true</i> . If so, must be a valid vessel registration number.
Fishing Method Code	Y	String	Must be "D" or "MH".
Target Species Code	Y	String	Must be a valid species code.
Mitigation Device Used	N	Array of Strings	Must be valid mitigation device codes.
Dredge Width Metres	Cond.	Decimal 2dp	Must be provided, and be greater than zero if the method is D.
Number of Tows Completed	Cond.	Integer	Must be provided, and be greater than zero if the method is D.
Number of Devices Used	Y	Integer	Must be greater than zero.
Start Date/Time (System)	Y	Datetime	
Start Latitude (System)	Cond.	Lat/Long	These must be provided unless the <i>manual</i> latitude and longitude attributes have been populated for the <i>start</i> location.
Start Longitude (System)	Cond.	Lat/Long	
Start Date/Time (Manual)	N	Datetime	
Start Latitude (Manual)	Cond.	Lat/Long	These must be populated if the <i>system</i> latitude and longitude attributes couldn't be populated for the <i>start</i> location.
Start Longitude (Manual)	Cond.	Lat/Long	
Finish Date/Time (System)	Y	Datetime	
Finish Latitude (System)	Cond.	Lat/Long	These must be provided unless the <i>manual</i> latitude and longitude attributes have been populated for the <i>finish</i> location.
Finish Longitude (System)	Cond.	Lat/Long	
Finish Date/Time (Manual)	N	Datetime	
Finish Latitude (Manual)	Cond.	Lat/Long	These must be populated if the <i>system</i> latitude and longitude attributes couldn't be populated for the <i>finish</i> location.
Finish Longitude (Manual)	Cond.	Lat/Long	
Total Estimated Catch Kg	Y	Decimal 2dp	Must be greater than or equal to zero.
Catches	N	Array of Catch records	
Is NFPS Catch Present	Y	Boolean	
NFPS Catches	Cond.	Array of NFPS Catch records	See below for validation details.
Amendment Reason	Cond.	String	Must not be populated when creating an event report. Must be populated when amending an existing event report.
Event Version	Cond.	Integer	Must not be populated when creating an event report. Must be populated when amending an existing event report. Must correspond to the current version number for the Event ID, as recorded by the SDA.
Notes	N	String	
Authorised User	Y	User Token	
Completed Date Time	Cond.	Datetime	Must be populated when creating an event report. Must not be populated when amending an existing event report.

### Catch Records

The dredging report can contain zero or many Catch records. If *Total Estimated Catch Kg* is greater than zero then at least one Catch record must be provided.

Attribute Name	Mand.	Data Type	Validation
Species Code	Y	String	Must be a valid species code.
Greenweight Estimate Kg	Y	Decimal 2dp	Must be greater than or equal to zero.

### NFPS Catch Records

The dredging report can contain zero or many NFPS Catch records. At least one NFPS Catch record is required if the *Is NFPS Catch Present* was reported as *true*.

Attribute Name	Mand.	Data Type	Validation
NFPS Species Code	Y	String	Must be a valid NFPS species code.
Number Uninjured	Cond.	Integer	At least one of these three values must be populated, and be greater than zero, for birds, mammals, reptiles and fish.
Number Injured	Cond.	Integer	
Number Dead	Cond.	Integer	
Estimated Weight Kg	Cond.	Decimal 2dp	Must be provided, and be greater than zero, for corals, sponges and bryozoans.
Tags	N	Array of strings	

DRAFT

## Part 2I: Other-Lining

Attribute Name	Mand.	Data Type	Validation
Event ID	Y	GUID	Must be unique to the event being created or amended.
Trip ID	Y	String	
Client Number	Y	String	Must be a valid Client Number.
Is Vessel Used	Y	Boolean	Must be <i>true</i> for trolling (T), otherwise can be <i>true</i> or <i>false</i> .
Vessel Number	Cond.	String	Must be provided if <i>Is Vessel Used</i> is <i>true</i> . If so, must be a valid vessel registration number.
Fishing Method Code	Y	String	Must be a valid Other-Lining method code.
Target Species Code	Y	String	Must be a valid species code.
Maximum Number of Lines Used	Y	Integer	Greater than or equal to zero.
Maximum Number of Hooks Used	Y	Integer	Greater than or equal to zero.
Start Date/Time (System)	Y	Datetime	
Start Latitude (System)	Cond.	Lat/Long	These must be provided unless the <i>manual</i> latitude and longitude attributes have been populated for the <i>start</i> location.
Start Longitude (System)	Cond.	Lat/Long	
Start Date/Time (Manual)	N	Datetime	
Start Latitude (Manual)	Cond.	Lat/Long	These must be populated if the <i>system</i> latitude and longitude attributes couldn't be populated for the <i>start</i> location.
Start Longitude (Manual)	Cond.	Lat/Long	
Finish Date/Time (System)	Y	Datetime	
Finish Latitude (System)	Cond.	Lat/Long	These must be provided unless the <i>manual</i> latitude and longitude attributes have been populated for the <i>finish</i> location.
Finish Longitude (System)	Cond.	Lat/Long	
Finish Date/Time (Manual)	N	Datetime	
Finish Latitude (Manual)	Cond.	Lat/Long	These must be populated if the <i>system</i> latitude and longitude attributes couldn't be populated for the <i>finish</i> location.
Finish Longitude (Manual)	Cond.	Lat/Long	
Catches	N	Array of Catch records	
Is NFPS Catch Present	Y	Boolean	
NFPS Catches	Cond.	Array of NFPS Catch records	See below for validation details.
Amendment Reason	Cond.	String	Must not be populated when creating an event report. Must be populated when amending an existing event report.
Event Version	Cond.	Integer	Must not be populated when creating an event report. Must be populated when amending an existing event report. Must correspond to the current version number for the Event ID, as recorded by the SDA.
Notes	N	String	
Authorised User	Y	User Token	
Completed Date Time	Cond.	Datetime	Must be populated when creating an event report. Must not be populated when amending an existing event report.

### Catch Records

The other-lining report can contain *zero* or *many* Catch records.

Attribute Name	Mand.	Data Type	Validation
Species Code	Y	String	Must be a valid species code.
Greenweight Estimate Kg	Y	Decimal 2dp	Must be greater than or equal to zero.

### NFPS Catch Records

The other-lining report can contain zero or many NFPS Catch records. At least one NFPS Catch record is required if the *Is NFPS Catch Present* was reported as *true*.

Attribute Name	Mand.	Data Type	Validation
NFPS Species Code	Y	String	Must be a valid NFPS species code.
Number Uninjured	Cond.	Integer	At least one of these three values must be populated, and be greater than zero, for birds, mammals, reptiles and fish.
Number Injured	Cond.	Integer	
Number Dead	Cond.	Integer	
Estimated Weight Kg	Cond.	Decimal 2dp	Must be provided, and be greater than zero, for corals, sponges and bryozoans.
Tags	N	Array of strings	

DRAFT

## Part 2J: Tuna-Lining

Attribute Name	Mand.	Data Type	Validation
Event ID	Y	GUID	Must be unique to the event being created or amended.
Trip ID	Y	String	
Client Number	Y	String	Must be a valid Client Number.
Is Vessel Used	Y	Boolean	Must be <i>true</i> .
Vessel Number	Y	String	Must be a valid vessel registration number.
Fishing Method Code	Y	String	Must be "SLL".
Target Species Code	Y	String	Must be a valid species code.
Mitigation Device Codes	N	Array of Strings	Must be valid mitigation device codes.
Line Length Nm	Y	Decimal 2dp	Greater than or equal to zero.
Number Of Hooks	Y	Integer	Greater than or equal to zero.
Number Of Floats	Y	Integer	Greater than or equal to zero.
Number Of Lightsticks	Y	Integer	Greater than or equal to zero.
Line Shooter	Y	Boolean	
Bait Type Percent - Fish	Y	Decimal 2dp	Each of these values must be provided and must be greater than or equal to zero. They must total to 100.
Bait Type Percent - Squid	Y	Decimal 2dp	
Bait Type Percent - Other	Y	Decimal 2dp	
Bait Type Percent - Artificial	Y	Decimal 2dp	
Is Line Lost	Cond.	Boolean	Must be <i>true</i> if <i>End Of Set</i> and <i>Start Of Haul</i> location and time details could not be populated.
Start Date/Time (System)	Y	Datetime	
Start Latitude (System)	Cond.	Lat/Long	These must be provided unless the <i>manual</i> latitude and longitude attributes have been populated for the <i>start</i> location.
Start Longitude (System)	Cond.	Lat/Long	
Start Date/Time (Manual)	N	Datetime	
Start Latitude (Manual)	Cond.	Lat/Long	These must be populated if the <i>system</i> latitude and longitude attributes couldn't be populated for the <i>start</i> location.
Start Longitude (Manual)	Cond.	Lat/Long	
End Of Set Date/Time (System)	Cond.	Datetime	
End Of Set Latitude (System)	Cond.	Lat/Long	Must be provided if <i>Is Line Lost</i> is not <i>true</i> . The <i>system</i> latitude and longitude values must be provided unless the <i>manual</i> equivalents are populated.
End Of Set Longitude (System)	Cond.	Lat/Long	
End Of Set Date/Time (Manual)	N	Datetime	
End Of Set Latitude (Manual)	N	Lat/Long	These must be populated if the <i>system</i> latitude and longitude attributes for the <i>End Of Set</i> position couldn't be populated (and the line wasn't lost).
End Of Set Longitude (Manual)	N	Lat/Long	
Start Of Haul Date/Time (System)	Cond.	Datetime	
Start Of Haul Latitude (System)	Cond.	Lat/Long	Must be provided if <i>Is Line Lost</i> is not <i>true</i> . The <i>system</i> latitude and longitude values must be provided unless the <i>manual</i> equivalents are populated.
Start Of Haul Longitude (System)	Cond.	Lat/Long	
Start Of Haul Date/Time (Manual)	N	Datetime	
Start Of Haul Latitude (Manual)	Cond.	Lat/Long	These must be populated if the <i>system</i> latitude and longitude attributes for the <i>Start Of Haul</i> position couldn't be populated (and the line wasn't lost).
Start Of Haul Longitude (Manual)	Cond.	Lat/Long	
Finish Date/Time (System)	Y	Datetime	
Finish Latitude (System)	Cond.	Lat/Long	These must be provided unless the <i>manual</i> latitude and longitude attributes have been populated for the <i>finish</i> location.
Finish Longitude (System)	Cond.	Lat/Long	
Finish Date/Time (Manual)	N	Datetime	

Attribute Name	Mand.	Data Type	Validation
Finish Latitude (Manual)	Cond.	Lat/Long	These must be populated if the <i>system</i> latitude and longitude attributes couldn't be populated for the <i>finish</i> location.
Finish Longitude (Manual)	Cond.	Lat/Long	
Catches	N	Array of Catch records	
Disposal Records	N	Array of Disposal records	
Is NFPS Catch Present	Y	Boolean	
NFPS Catches	Cond.	Array of NFPS Catch records	See below for validation details.
Amendment Reason	Cond.	String	Must not be populated when creating an event report. Must be populated when amending an existing event report.
Event Version	Cond.	Integer	Must not be populated when creating an event report. Must be populated when amending an existing event report. Must correspond to the current version number for the Event ID, as recorded by the SDA.
Notes	N	String	
Authorised User	Y	User Token	
Completed Date Time	Cond.	Datetime	Must be populated when creating an event report. Must not be populated when amending an existing event report.

## Catch Records

The tuna-lining report can contain zero or many Catch records.

Attribute Name	Mand.	Data Type	Validation
Species Code	Y	String	Must be a valid species code.
Product State Code	Y	String	Must be a valid product state code.
Processed Weight Kg	Y	Integer	Must be greater than zero.
Number of Fish	Y	Integer	Must be greater than zero.

## NFPS Catch Records

The tuna-lining report can contain zero or many NFPS Catch records. At least one NFPS Catch record is required if the *Is NFPS Catch Present* was reported as *true*.

Attribute Name	Mand.	Data Type	Validation
NFPS Species Code	Y	String	Must be a valid NFPS species code.
Number Uninjured	Cond.	Integer	At least one of these three values must be populated, and be greater than zero, for birds, mammals, reptiles and fish.
Number Injured	Cond.	Integer	
Number Dead	Cond.	Integer	
Estimated Weight Kg	Cond.	Decimal 2dp	Must be provided, and be greater than zero, for corals, sponges and bryozoans.
Seabird Capture Code	Cond.	String	Must be provided if the NFPS Species is a type of seabird. Must be a valid Seabird Capture Code.
Tags	N	Array of strings	

## Disposals Records

The tuna-lining report can also contain *zero* or *many* Disposal records.



Attribute Name	Mand.	Data Type	Validation
Disposal Code	Y	String	Must be a valid Disposal Code.
Stock Code	Y	String	Must be a valid Stock Code.
Estimated Greenweight Kg	Y	Decimal 2dp	Must be greater than zero.
Number Of Fish	Y	Integer	Must be greater than zero.

DRAFT

## Part 2K: Squid jigging

Attribute Name	Mand.	Data Type	Validation
Event ID	Y	GUID	Must be unique to the event being created or amended.
Trip ID	Y	String	
Client Number	Y	String	Must be a valid Client Number.
Is Vessel Used	Y	Boolean	Must be <i>true</i> .
Vessel Number	Y	String	Must be a valid vessel registration number.
Fishing Method Code	Y	String	Must be "SJ".
Target Species Code	Y	String	Must be a valid species code.
Mitigation Device Codes	N	Array of Strings	Must be valid mitigation device codes.
Deepest Lure Depth Metres	Y	Integer	Must be greater than zero.
Bottom Depth Metres	Y	Integer	Must be greater than zero.
Number Single Reels	Y	Integer	Must be greater than or equal to zero.
Number Double Reels	Y	Integer	Must be greater than or equal to zero.
Start Date/Time (System)	Y	Datetime	
Start Latitude (System)	Cond.	Lat/Long	These must be provided unless the <i>manual</i> latitude and longitude attributes have been populated for the <i>start</i> location.
Start Longitude (System)	Cond.	Lat/Long	
Start Date/Time (Manual)	N	Datetime	
Start Latitude (Manual)	Cond.	Lat/Long	These must be populated if the <i>system</i> latitude and longitude attributes couldn't be populated for the <i>start</i> location.
Start Longitude (Manual)	Cond.	Lat/Long	
Finish Date/Time (System)	Y	Datetime	
Finish Latitude (System)	Cond.	Lat/Long	These must be provided unless the <i>manual</i> latitude and longitude attributes have been populated for the <i>finish</i> location.
Finish Longitude (System)	Cond.	Lat/Long	
Finish Date/Time (Manual)	N	Datetime	
Finish Latitude (Manual)	Cond.	Lat/Long	These must be populated if the <i>system</i> latitude and longitude attributes couldn't be populated for the <i>finish</i> location.
Finish Longitude (Manual)	Cond.	Lat/Long	
Catches	N	Array of Catch records	
Is NFPS Catch Present	Y	Boolean	
NFPS Catches	Cond.	Array of NFPS Catch records	See below for validation details.
Amendment Reason	Cond.	String	Must not be populated when creating an event report. Must be populated when amending an existing event report.
Event Version	Cond.	Integer	Must not be populated when creating an event report. Must be populated when amending an existing event report. Must correspond to the current version number for the Event ID, as recorded by the SDA.
Notes	N	String	
Authorised User	Y	User Token	
Completed Date Time	Cond.	Datetime	Must be populated when creating an event report. Must not be populated when amending an existing event report.

## Catch Records

The jigging fish catch report can contain *zero* or *many* Catch records.

Attribute Name	Mand.	Data Type	Validation
Species Code	Y	String	Must be a valid species code.
Greenweight Estimate Kg	Y	Decimal 2dp	Must be greater than or equal to zero.

## NFPS Catch Records

The jigging fish catch report can contain zero or many NFPS Catch records. At least one NFPS Catch record is required if the *Is NFPS Catch Present* was reported as *true*.

Attribute Name	Mand.	Data Type	Validation
NFPS Species Code	Y	String	Must be a valid NFPS species code.
Number Uninjured	Cond.	Integer	At least one of these three values must be populated, and be greater than zero, for birds, mammals, reptiles and fish.
Number Injured	Cond.	Integer	
Number Dead	Cond.	Integer	
Estimated Weight Kg	Cond.	Decimal 2dp	Must be provided, and be greater than zero, for corals, sponges and bryozoans.
Tags	N	Array of strings	

## Schedule 3: NFPS Reports

Attribute Name	Mand.	Data Type	Validation
Event ID	Y	GUID	Must be unique to the event being created or amended.
Trip ID	Y	String	
Client Number	Y	String	Must be a valid Client Number.
Is Vessel Used	Y	Boolean	
Vessel Number	Cond.	String	Must be provided if <i>Is Vessel Used</i> is <i>true</i> . Must be a valid vessel registration number.
Event Date/Time (System)	Y	Datetime	
Location (System) - Latitude	Cond.	Lat/Long	These must be provided unless the <i>manual</i> latitude and longitude attributes have been populated.
Location (System) - Longitude	Cond.	Lat/Long	
Event Date/Time (Manual)	N	Datetime	
Location (Manual) - Latitude	Cond.	Lat/Long	These must be populated if the <i>system</i> latitude and longitude attributes couldn't be populated.
Location (Manual) - Longitude	Cond.	Lat/Long	
Amendment Reason	Cond.	String	Must not be populated when creating an event report. Must be populated when amending an existing event report.
Event Version	Cond.	Integer	Must not be populated when creating an event report. Must be populated when amending an existing event report. Must correspond to the current version number for the Event ID, as recorded by the SDA.
Notes	N	String	
NFPS Catches	Y	Array of NFPS Catch records	
Authorised User	Y	User Token	
Completed Date Time	Cond.	Datetime	Must be populated when creating an event report. Must not be populated when amending an existing event report.

### NFPS Catch Records

The standalone NFPS report can contain *one* or *many* NFPS Catch records; it must contain at least one.

Attribute Name	Mand.	Data Type	Validation
NFPS Species Code	Y	String	Must be a valid NFPS species code.
Number Uninjured	Cond.	Integer	At least one of these three values must be populated, and be greater than zero, for birds, mammals, reptiles and fish.
Number Injured	Cond.	Integer	
Number Dead	Cond.	Integer	
Estimated Weight Kg	Cond.	Decimal 2dp	Must be provided, and be greater than zero, for corals, sponges and bryozoans.
Tags	N	Array of strings	

## Schedule 4: Processing Reports

Attribute Name	Mand.	Data Type	Validation
Event ID	Y	GUID	Must be unique to the event being created or amended.
Trip ID	Y	String	
Client Number	Y	String	Must be a valid Client Number.
Is Vessel Used	Y	Boolean	Must be <i>true</i> .
Vessel Number	Y	String	Must be a valid vessel registration number.
Processing Date/Time	Y	Datetime	
Litres Of Fish Oil Processed	N	Integer	
Notes	N	String	
Amendment Reason	Cond.	String	Must not be populated when creating an event report. Must be populated when amending an existing event report.
Event Version	Cond.	Integer	Must not be populated when creating an event report. Must be populated when amending an existing event report. Must correspond to the current version number for the Event ID, as recorded by the SDA.
Products	Y	Array of Product records	
Authorised User	Y	User Token	
Completed Date Time	Cond.	Datetime	Must be populated when creating an event report. Must not be populated when amending an existing event report.

### Product Records

Each processing event report can contain *one* or *many* Product records; they must contain at least one.

Attribute Name	Mand.	Data Type	Validation
Product State Code	Y	String	Must be a valid product state code.
Container Type Code	Y	String	Must be a valid container type code.
Estimated Container Weight Kg	Y	Decimal 2dp	Must be greater than zero.
Container Count	Y	Integer	Must be greater than zero.
Conversion Factor	Cond.	Decimal 2dp	The conversion factor <i>must</i> be populated for all <i>principal</i> product states, other than LIV, MEA and GRE. It <i>must not</i> be populated if the product state is LIV, MEA, or GRE, or for any <i>additional</i> product states. If populated, the conversion factor must be the correct value for the given combination of species code, product state, and vessel number (in the case of vessel-specific conversion factors).
Species	Cond.	Array of Species records	See below for validation details

### Species Records

Each Product can contain *one* or *many* Species records. If the product state code is MEA, LIV, or LIB there can be multiple Species records. For all other product states there must only be one Species record.

Attribute Name	Mand.	Data Type	Validation
Species Code	Y	String	Must be a valid species code.
Greenweight Kg	Cond.	Decimal 2dp	Must be provided, and be greater than zero, for all <i>principal</i> product state codes. Must not be populated for any <i>additional</i> product states.

## Example of a Processing Event Report

The following is an example of a single processing event report.

Attribute Name											
Event ID	d127f941-1476-4ff2-a716-9e...										
Trip ID	945										
Client Number	9790123										
Is Vessel Used	true										
Vessel Number	54123										
Litres Of Fish Oil Processed	120										
Processing Date Time	2017-04-05T00:00:00+11:00										
Notes											
Authorised User	{Mitch Aiken}										
Completed Date Time	2017-04-05T21:31:21+11:00										
Product State Code		DRE	GRE	GRE	MEA	SFA	HDS	SHF	LIB		
Container Type Code		BIN	BIN	BIN	BAG	BIN	BIN	BOX	BAG		
Estimated Container Weight Kg		20	20	20	15	20	20	20	2.5		
Container Count		3	3	1	2	1	1	1	2		
Conversion Factor		1.80	-	-	-	1.85	-	-	-		
Species Code		SNA	SNA	TAR	HOK	LIN	BWS	SNA	GSH	BWS	GSH
Greenweight Kg		106.5	65.5	22	13.1	22.9	35.94	-		-	-

## Schedule 5: Disposal Reports

Attribute Name	Mand.	Data Type	Validation
Event ID	Y	GUID	Must be unique to the event being created or amended.
Trip ID	Y	String	
Client Number	Y	String	Must be a valid Client Number.
Is Vessel Used	Y	Boolean	
Vessel Number	Cond.	String	Must be provided if <i>Is Vessel Used</i> is <i>true</i> . If so, must be a valid vessel registration number.
Disposal Date/Time	Y	Datetime	
At Sea Holding Container <sup>1</sup> Location - Latitude (System)	Cond.	Lat/Long	At sea holding container location details must be provided (either <i>system</i> or <i>manual</i> ) if the disposal report includes disposal codes P, H, or N.
At Sea Holding Container Location - Longitude (System)	Cond.	Lat/Long	
At Sea Holding Container Location - Latitude (Manual)	Cond.	Lat/Long	
At Sea Holding Container Location - Longitude (Manual)	Cond.	Lat/Long	
Amendment Reason	Cond.	String	Must not be populated when creating an event report. Must be populated when amending an existing event report.
Event Version	Cond.	Integer	Must not be populated when creating an event report. Must be populated when amending an existing event report. Must correspond to the current version number for the Event ID, as recorded by the SDA.
Notes	N	String	
Stock Disposals	Y	Array of Stock Disposal records	
Authorised User	Y	User Token	
Completed Date Time	Cond.	Datetime	Must be populated when creating an event report. Must not be populated when amending an existing event report.

### Stock Disposal Records

Disposal reports can contain *one* or *many* stock disposal records. They must contain at least one stock disposal record.

Attribute Name	Mand.	Data Type	Validation
Stock Code	Y	String	Must be a valid stock code.
Disposal Code	Y	String	Must be a valid disposal code.
Estimate Greenweight Kg	Y	Decimal 2dp	Must be greater than zero.

<sup>1</sup> Please note that the SDA refers to *At Sea Holding Container Location* as *At Sea Holding Receptacle Location*.

## Schedule 6: Landing Reports

Attribute Name	Mand.	Data Type	Validation
Event ID	Y	GUID	Must be unique to each event.
Trip ID	Y	String	
Client Number	Y	String	Must be a valid Client Number.
Is Vessel Used	Y	Boolean	
Vessel Number	Cond.	String	Must be provided if <i>Is Vessel Used</i> is <i>true</i> . If so, must be a valid vessel registration number.
Landing Date Time	Y	Datetime	
Greenweight Details Complete?	Y	Boolean	After providing a report with this as <i>true</i> the SDA will validate that all future updates still have it as <i>true</i> . It must not be changed back to <i>false</i> .
Greenweight Details Completed Date Time	Cond.	Datetime	Must not be provided if “ <i>Greenweight Details Complete?</i> ” is <i>false</i> . Must be provided on the event report when “ <i>Greenweight Details Complete?</i> ” is <b>first</b> set to <i>true</i> . Must not be provided on subsequent amendments, after the SDA has accepted an event report with “ <i>Greenweight Details Complete?</i> ” as <i>true</i> .
Amendment Reason	Cond.	String	Must not be populated when creating an event report. Must be populated when amending an existing event report.
Event Version	Cond.	Integer	Must not be populated when creating an event report. Must be populated when amending an existing event report. Must correspond to the current version number for the Event ID, as recorded by the SDA.
Notes	N	String	
Landings	Y	Array of Landing records	
Authorised User	Y	User Token	
Completed Date Time	Cond.	Datetime	Must be populated when creating an event report. Must not be populated when amending an existing event report.

### Landing Records

Each Landing report can contain *one or many* Landing records; they must contain at least one.

Attribute Name	Mand.	Data Type	Validation
Landing Code	Y	String	If “ <i>Greenweight Details Complete?</i> ” is <i>true</i> this must not be Q or T.
LFR Client Number	Cond.	String	Must be populated if Landing Code is L, QL, TL or EOYL. Must be a valid Client number.
Holding Container <sup>2</sup> Location -Latitude (System)	Cond.	Lat/Long	Holding container location details must be populated if Landing Code is Q or QL. This can either be a set of coordinates or an address.
Holding Container Location - Longitude (System)	Cond.	Lat/Long	
Holding Container Location - Latitude (Manual)	Cond.	Lat/Long	
Holding Container Location - Longitude (Manual)	Cond.	Lat/Long	
Holding Container Address	Cond.	String	
Tranship Vessel Number	Cond.	String	Must be populated if Landing Code is T, TL, or TT. Must be a valid vessel registration number.
Customary Fishing Document Reference	Cond.	String	Must be populated if Landing Code is “CS”.

<sup>2</sup> Please note that the SDA refers to *Holding Container Location* as *Holding Receptacle Location*.



Attribute Name	Mand.	Data Type	Validation
Litres of Fish Oil Landed	N	Integer	If provided must be greater than zero.
Offal Has Been Mealed	N	Boolean	
Landing-Products	Y	Array of Landing-Product records	

## Landing-Product Records

Each Landing record can contain *one or many* Landing-Product records; they must contain at least one.

Attribute Name	Mand.	Data Type	Validation
Product State Code	Y	String	Must be a valid product state code.
Container Type Code	Y	String	Must be a valid Container Type Code.
Estimated Container Weight Kg	Y	Decimal 2dp	Must be greater than 0.
Container Count	Y	Integer	Must be greater than 0.
Purchase Order Number	Cond.	String	Must be populated if <i>Landing Code</i> is L, QL, TL or EOYL and " <i>Greenweight Details Complete?</i> " is <i>true</i> .
Stocks	Cond.	Array of Stock records	

## Stock Records

Each Landing-Product record can contain *one or many* Stock records. If the Landing-Product record has a product state code of MEA, LIV, or LIB it can have multiple Stock records, otherwise it must only have one Stock record.

Attribute Name	Mand.	Data Type	Validation
Stock Code	Y	String	Must be a valid ERS Stock Code.
Greenweight Kg	Cond.	Decimal 2dp	When " <i>Greenweight Details Complete?</i> " is <i>true</i> this must be provided, and be greater than zero, for all "Principal" product state codes. Must never be populated for any "Additional" product state codes.
Shark Fins Kg	Cond.	Decimal 2dp	When " <i>Greenweight Details Complete?</i> " is <i>true</i> and <i>Product State Code</i> is "SHF" this must be provided, and be greater than zero. Must not be provided for any other product states.

## Landing Event Report Example 1 – initial landing report

The following is an example of a landing event report provided immediately after landing, but prior to having greenweight figures or PO numbers from the LFR. This example also shows that if some greenweight values are available (as is the case for the wharf sales portion of this landing report) then they can be included at this point.

Attribute Name	
Event ID	d127f941-1476-4ff2-a716-9e...
Trip ID	Tom 23
Client Number	9790123
Is Vessel Used	true
Vessel Number	54123
Landing Date Time	2017-06-12T12:00:00+11:00
Greenweight Details Complete?	No
Greenweight Details Completed Date Time	null
Authorised User	{Humphrey Hobbs}
Complete Date Time	2017-06-12T13:12:31+11:00
Notes	

Landing Code	L	W
LFR Client Number	8721345	-
Litres of Fish Oil Landed	-	-
Offal Has Been Mealed	Yes	-
Tranship Vessel Number	-	-

Product State Code	GRE	GRE	MEA	GRE
Container Type Code	BIN	BIN	BAG	BIN
Estimated Container Weight Kg	20	20	15	20
Container Count	3	1	2	1
Purchase Order Number	null	null	null	-

Stock Code	SNA1	TAR1	HOK1	LIN1	HAK1
Greenweight Kg	null	null	null	null	22.9

## Landing Event Report Example 2 – updating greenweight figures from LFR

This example continues from the landing report discussed in example 1; in this case it represents the report being provided by the fisher after they get the green-weight details from the LFR. Note that in this case it is actually processed on the logbook as an amendment because the initial report had already been provided.

This example also illustrates that container weights and counts can also be adjusted/corrected when providing the greenweight amendment/update.

Attribute Name							
Event ID	d127f941-1476-4ff2-a716-9e...						
Event Version	1						
Trip ID	Tom 23						
Client Number	9790123						
Is Vessel Used	true						
Vessel Number	54123						
Landing Date Time	2017-06-12T12:00:00+11:00						
Greenweight Details Complete?	Yes						
Greenweight Details Completed Date Time	2017-06-15T20:03:00+11:00						
Authorised User	{Lucas Derby}						
Amendment Reason	GWT details provided						
Notes							

Landing Code	L					W
LFR Client Number	8721345					-
Litres of Fish Oil Landed	-					-
Offal Has Been Mealed	Yes					-
Tranship Vessel Number	-					-

Product State Code	GRE	GRE	MEA	GRE	GRE
Container Type Code	BIN	BIN	BAG	BIN	BIN
Estimated Container Weight Kg	20	20	14.5	18	20
Container Count	4	1	2	1	1
Purchase Order Number	PO12345	PO12345	PO12300	PO12345	-
Stock Code	HOK1	LIN1	HOK1	LIN1	HAK1
Greenweight Kg	65.5	22	13.1	17	17.52

---

### Landing Event Report Example 3 – landing to a chiller

This example illustrates an initial landing report for a landing to a holding container on land.

Attribute Name			
Event ID	I897f941-1476-4ff2-a815-9e...		
Trip ID	176		
Client Number	9230123		
Is Vessel Used	true		
Vessel Number	900112		
Landing Date Time	2017-06-18T12:00:00+11:00		
Greenweight Details Complete?	No		
Greenweight Details Completed Date Time	null		
Authorised User	{Matt Elwin}		
Complete Date/Time	2017-06-18T12:17:21+11:00		
Notes			
Landing Code		Q	
LFR Client Number		-	
Holding Container Location		Latitude: -39.4816 Longitude: 176.8972	
Litres of Fish Oil Landed		-	
Tranship Vessel Number		-	
Product State Code		GRE	GRE
Container Type Code		BIN	BIN
Estimated Container Weight Kg		20	20
Container Count		4	1
Purchase Order Number		-	-
Stock Code		SNA1	TAR1
Greenweight Kg		null	null

---

#### Landing Event Report Example 4 – transferring from a chiller to an LFR.

This example continues from the landing report illustrated in example 3; in this case it represents the report being amended by the fisher after they get the green-weight details from the LFR. The values highlighted in yellow indicate the values that have been amended.

Attribute Name	
Event ID	I897f941-1476-4ff2-a815-9e...
Event Version	1
Trip ID	176
Client Number	9230123
Is Vessel Used	true
Vessel Number	900112
Landing Date Time	2017-06-18T12:00:00+11:00
Greenweight Details Complete?	Yes
Greenweight Details Completed Date Time	2017-06-21T19:45:17+11:00
Authorised User	{Matt Elwin}
Amendment Reason	Updating GWT figures from LFR
Notes	

Landing Code	QL
LFR Client Number	9790155
Holding Container Location	Latitude: -39.4816 Longitude: 176.8972
Litres of Fish Oil Landed	-
Tranship Vessel Number	-

Product State Code	GRE	GRE
Container Type Code	BIN	BIN
Estimated Container Weight Kg	20	20
Container Count	4	1
Purchase Order Number	PO12358	PO12358

Stock Code	SNA1	TAR1
Greenweight Kg	75.51	22.56

---

---