

Guidance for cleaning used vehicles

Thoroughly clean used vehicles to ensure all biosecurity risk material is removed. While a valet service may make the vehicle look presentable, it doesn't ensure the car will meet the 'clean' biosecurity outcome.

Below are examples of some frequently contaminated areas of a vehicle including tips to ensure the vehicle arrives in New Zealand clean and free of biosecurity contamination.

If the used vehicle is being exported from a country listed in **Schedule 3** of the IHS, additional treatment requirements for BMSB management are required during the BMSB season (**section 4.1 of the IHS**)

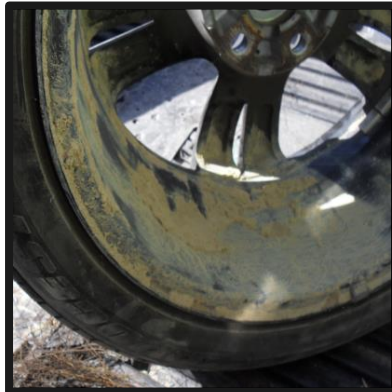
Note: All used vehicles exported from Japan are required to be managed by an MPI-Approved Used Vehicle System in Japan.

Vehicle Exterior

Clean all exterior surfaces including bumpers, grates, hubcaps, mud guards, trays, tyres and wheels, roof racks, rails and the whole underside of vehicle.



Remove hubcap, check for contamination, especially eggs masses around tyre and wheel area.



A light road film on the wheel is OK, but more than that must be removed



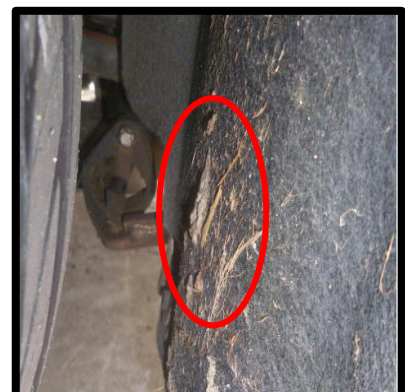
Look for egg masses, insects and spider webbing around the bumper and grates



Remove any plant material or pooled water from the vehicle.



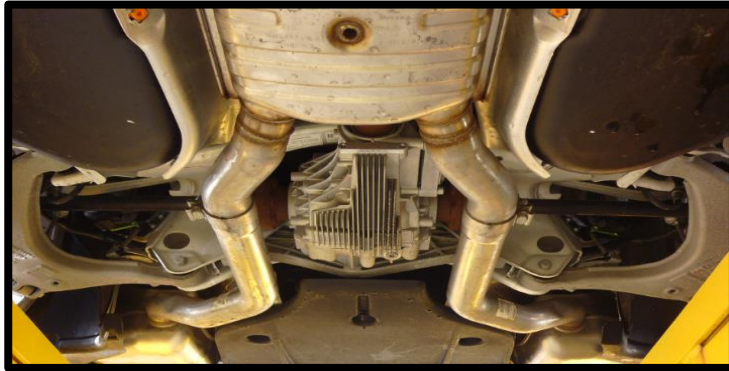
Thoroughly check mudguards, tyres and wheel arches. Water blast if required.



If mud guards are covered in felt, thoroughly scrub or water blast.

Vehicle Underside

Look for animals such as insects, snails, snakes, and spiders; and for plant material including seeds, and soil.



Motor area

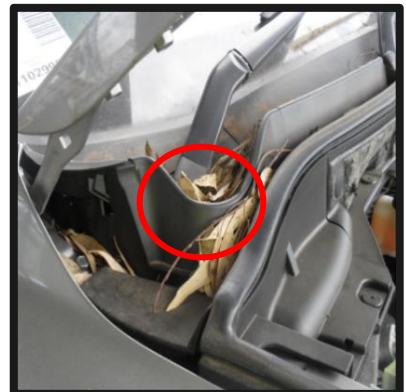
Clean motor area including in and around motor, crevices and bonnet/hood area. Use a flashlight/torch where required.



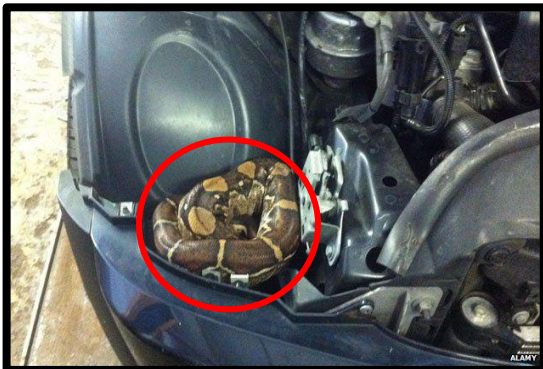
Remove contamination around bonnet/hood and grilles.



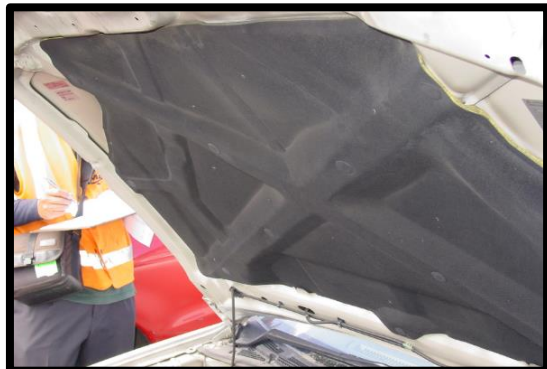
Wipe down surfaces that may contain plant material, seeds, and soil.



Look in all corners, crevices and hinges.



Look out for reptiles and snakes. They are attracted to warmth and confined spaces such as motors.



If the underside of the bonnet/hood is covered in felt, scrub or water blast to remove plant material/ seeds.

Vehicle Interior

Clean Interior areas of a vehicle including the boot/trunk, between and under car seats, ceiling areas, floor surfaces, side panels, all compartments, the spare tyre and storage area.



Look for egg masses and insects on spare tyre. Vacuum tyre tray.



Vacuum under and between car seats. Lift rear car seats unless bolted.



Vacuum the boot/trunk to remove any contamination.

Note: If personal effects are accompanying a vehicle, you need to declare and package them separately as MPI Inspectors must be able to verify the cleanliness of the vehicle on arrival. Any associated unloading or additional inspection costs will be the responsibility of the importer.



Best ways to remove contamination:

- **Animal excrement or soil** – high pressure hose on exterior.
- **Egg masses** – remove all traces
- **Insect, snail or spider infestation** – if you can see many insects or spiders in or on the equipment, fumigation or heat treatment should be carried out.
- **Insects, snails and spiders** – remove. Spray a strong residual insecticide over surrounding areas especially where visibility of all components and parts is poor.
- **Plant material** – remove.
 - If found in the interior, use high pressure air and/or a vacuum cleaner.
 - If the plant material is on the exterior, a high pressure hose or water blaster can be used to dislodge the contamination.
- **Seeds** – hand pick seeds off with sticky tape or equivalent. Loose seeds can be vacuumed from interior or hosed off exterior.

Vehicle Inspection Checklist:

Below is a check list to follow to ensure all areas of the car have been cleaned prior to importation.

Steps	Area to inspect and clean	Complete ✓
1	Clean the grille and front of vehicle.	
2	Clean across and under the bonnet/hood and air vents.	
3	Clean front wheel, mud guards and wheel arch.	
4	Clean mirrors and window ledges.	
5	Clean across and around the roof including roof rails.	
6	Clean back wheel, mud guards and wheel arch.	
7	Clean back bumper area.	
8	Repeat the entire process on the other side of the vehicle.	
9	Open bonnet/hood and thoroughly clean motor area. Use a bright light/torch to make sure all motor crevices have been cleaned.	
10	Clean all interior areas of vehicle, including all compartments, under carpet if loose, under mats, between and under the seats.	
11	Clean the underside of vehicle.	

Guidance for cleaning used trucks

Thoroughly clean used trucks to ensure all biosecurity risk material is removed. Make sure you thoroughly inspect internally and externally with a bright light.

Any associated biosecurity risk material associated with a truck needs to be removed. For example, a rubbish truck must arrive with all rubbish or sludge removed and should be stream cleaned. Any quarantine destruction costs will be at the responsibility of the importer and could lead to re-shipping of the truck.

Below are examples of some typical areas of a truck and tips for ensuring that the truck arrives in New Zealand clean and free of biosecurity contamination.

If the used truck is being exported from a country listed in **Schedule 3** of the IHS, additional treatment requirements for BMSB management are required during the BMSB season (**Section 4.1 of the IHS**)

Note: All used vehicles (this includes trucks) exported from Japan are required to be managed by an MPI-Approved Used Vehicle System in Japan.

Exterior of truck

All external surfaces of the truck must be clean of insects and insect egg masses, plant material, seeds and soil. Exterior surfaces include panels, doors, bumpers, trays, tyres, wheels, mud guards, hubcaps and the whole underside of vehicle.

Tyres, wheels and wheel arch area

Thoroughly clean areas to remove insects, insect egg masses, plant material, seeds and soil.



Water blast tyres and mud guards. A light road film is OK but anything more than that must be removed.



Use a bright light to illuminate dark areas behind wheels. Insect egg masses are common in these areas.

Wooden trays and decks

Any wood on the truck needs to be inspected and may require treatment. Surface fungi (mildew) is not considered to be a contaminant if it can be wiped from a surface, however fungi that is embedded must be treated or the wood removed. Drain any pooled water from these areas.



Check rotten wood for insect infestation, larvae and maggots. Rotten wooden must be treated or removed.



If fungal structures (fruiting body) are present, wood must be removed or treated.

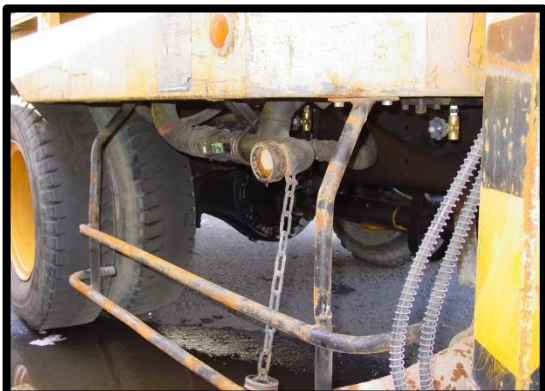
External surfaces, panels and frames

All external surfaces of the truck must be cleaned, including windows and door frames, railings, sliders, opening to compartments and between panels.



Underside of vehicle

The underside of the truck includes a large amount of surfaces where animals, insects, egg masses, plant material, snails, snakes, spiders and soil may be found.



Use a bright light to inspect what you can of the vehicle underside such as plant material or soil (circled).

A high pressured water hose can help clean what you may not be able to see.

Motor area

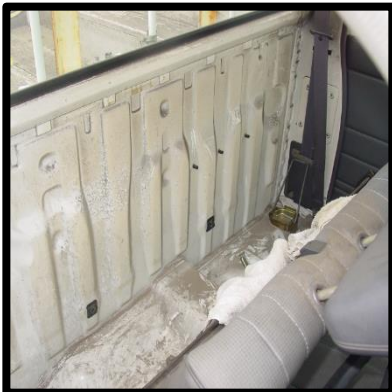
The cab of the truck must be lifted to inspect the motor for contamination including animals, insects, egg masses, plant material and soil. Care needs to be taken to inspect any other parts that are difficult to access.



Clean the radiator and surrounding area, removing all contamination. An air gun or vacuum can help remove contamination from crevices around motor.

Truck Interior

All interior areas of the truck must be cleaned, including between and under car seats, ceiling areas, floor surfaces, side panels, all compartments, and storage areas.



Lift up seats to clean behind. Look out for insects or insect egg masses.



If the motor is accessible from cab, use a vacuum or air gun to remove any contamination.



Remove all rubbish. Pull back all carpet and plastic/rubber mats and vacuum.

Best ways to remove contamination:

- Animal excrement or soil – high pressure hose or water blaster on exterior.
 - Egg masses – remove all traces.
 - Insect, snail or spider infestation – if you can see many insects or spiders in or on the equipment, fumigation or heat treatment should be carried out.
 - Insects, snails and spiders – remove. Spray a strong residual insecticide over surrounding areas especially where visibility of all components and parts is poor.
 - Plant material – remove.
 - If found in the interior, use high pressure air and/or a vacuum cleaner.
 - If the plant material is on the exterior, a high pressure hose or water blaster can be used to dislodge the contamination.
 - Seeds – hand pick seeds off with sticky tape or equivalent. Loose seeds can be vacuumed from interior or hosed off exterior.
-

Inspection Checklist:

Below is a check list to follow to ensure all areas of the truck have been cleaned prior to importation.

Step s	Area to inspect and clean	Complete ✓
1	All internal areas of truck including between and under seats, internal walls and surfaces, internal compartments, foot and pedal areas.	
2	External Area: Motor.	
3	External Area: Wooden decks and trays.	
4	External Area: Entire underside of truck.	
5	External Area: Tyres, wheels, wheel arch and mud guards.	
6	External Area: All other exterior surfaces including panels, window and door frames, roof.	
7	Removal of any rubbish, items, liquids etc. that the truck may have been used to transport.	
8	If earth moving equipment is part of the truck (i.e. attached crane), ensure this is also cleaned.	

Guidance for cleaning outdoor or targeted machinery

Thoroughly clean all outdoor or targeted machinery to ensure all biosecurity contamination is removed. A bright light will be needed to fully inspect the machinery. Dismantle and import in parts as much as possible for faster clearance on arrival and to ensure the machine has been cleaned to MPI's standard.

Machinery is required to be fully cleaned internally and externally in a dismantled state and a cleaning certificate completed on the same day as cleaning is required to be presented to MPI (Section 3.1 of the IHS).

Below are examples of some commonly contaminated machinery areas and tips for ensuring that machinery arrives in New Zealand clean and free of biosecurity contamination.

If the used machinery is being exported from a county listed in **Schedule 3** of the IHS, additional treatment requirements for BMSB management are required during the BMSB season (**section 4.2 of the IHS**).

Dismantling

Dismantle/remove all parts and panels around the internal components of the machinery. Be sure to leave these panels off or loosely attached when exporting.



Break down all possible parts of the machinery to remove all contamination.



Remove panelling to fully clean and leave panelling off during importation where possible.

Exterior cleaning

Dismantle or open all possible compartments. Clean exterior areas of machinery with a high pressure spray. Ensure all animal excrement, plant material and soil has been removed.

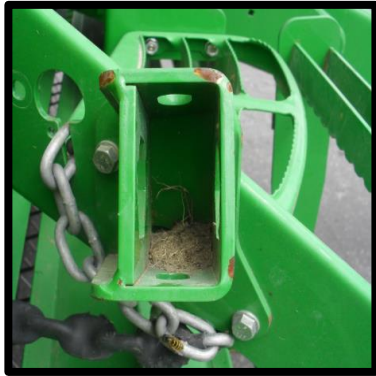


Open all possible compartments for cleaning. Use high pressure air or a vacuum with an adaptable head.

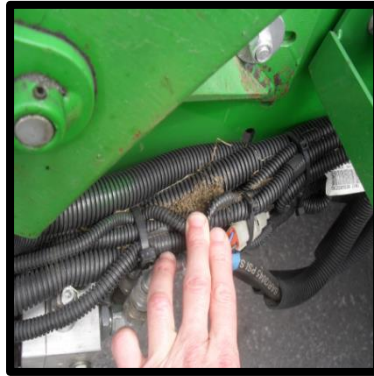


Remove all plant material trapped between small crevices and cables.

Look out for these common areas of contamination



Clean small areas/hollows where contamination may be caught.



Clean between cables to remove plant material, seeds and soil.



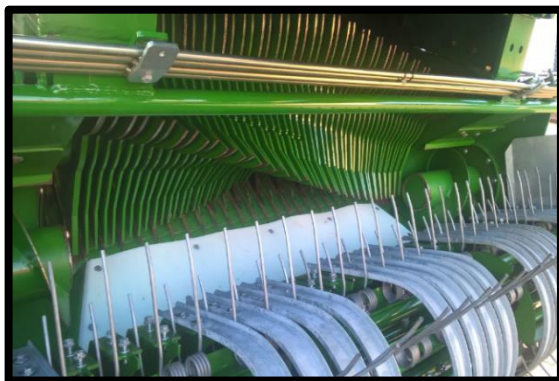
Clean hinges and axels where plant material may be caught.



Open all possible compartments for cleaning. Use high pressure air or a vacuum with an adaptable head where required.



Remove all plant material trapped between small crevices and cables.



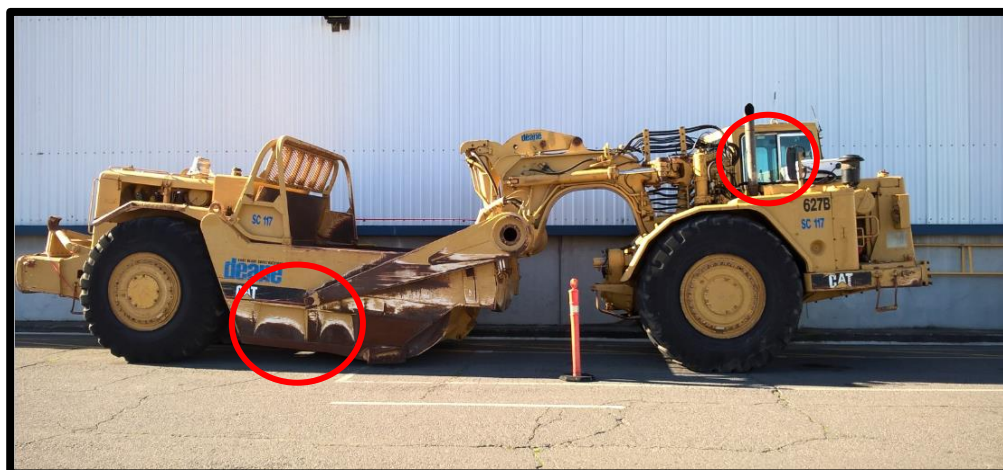
Remove all plant material caught in the comb/teeth. Dismantle and clean all internal compartments.



Clean all areas that have had contact with plant material and soil. Check all component hinges. Shine a bright light up any metal structures that are hollow.

Guidance for Earth Moving Machinery

Thoroughly clean machinery to ensure all biosecurity risk material is removed. A bright light will be needed.



Exterior Cleaning:

- Dismantle machinery where possible to inspect and clean thoroughly.
- Clean all exterior areas of machinery to remove insects, egg masses, plant material, seeds, snails and soil.
- Use a high pressure water sprayer to remove what you may not be able to see underneath.
- Inspect all hinges and components.
- Use a flashlight/torch to inspect dark areas under or within the machinery.
- If tyres are present, make sure the tyre and surrounding areas are thoroughly inspected and cleaned as these are common areas for insect egg masses.



Inspect the entire boom area. Clean all hinges, swivel points and between the entire lengths of cable bundles.



Inspect and clean filters, grates and grilles for contamination caught within. Where possible remove these parts and leave off during importation.

Look out for these common areas of contamination



Ensure buckets, grabs or other areas that come in contact with soil are clean.



Clean anywhere cables or wires are clustered together.



Inspect all wheel arches/joining for contamination, especially insect or spider egg masses.



Clean small areas where plant material may have collected.



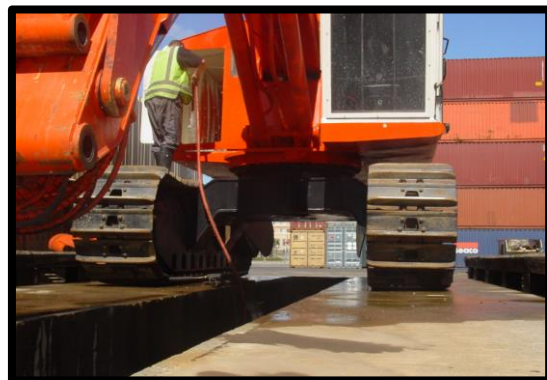
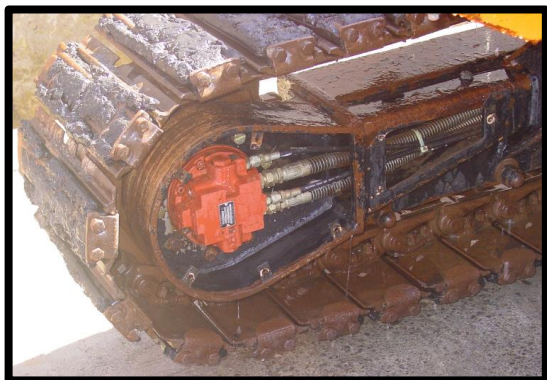
Clean open areas that may contain contamination.



Clean hinges to remove contamination or insect webbing.

Machinery tracks

Tracks are a high-risk area due to being the contact point with soil and other biosecurity contaminants that can easily lodge in grooves and crevices.



Waterblast all track pads, track chains and other cavities to ensure they are free of soil and other contaminants. Dismantle as much as possible so that panels and plates are removed for importation. This includes non-affixed panels, rock guards and motor covers.

Best ways to remove contamination:

- Animal excrement or soil – high pressure hose or water blaster on exterior.
 - Egg masses – remove all traces.
 - Insect, snail or spider infestation – if you can see many insects or spiders in or on the equipment, fumigation or heat treatment should be carried out.
 - Insects, snails and spiders – remove. Spray a strong residual insecticide over surrounding areas especially where visibility of all components and parts is poor.
 - Plant material – remove.
 - If found in the interior, use high pressure air and/or a vacuum cleaner.
 - If the plant material is on the exterior, a high pressure hose or water blaster can be used to dislodge the contamination.
 - Seeds – hand pick seeds off with sticky tape or equivalent. Loose seeds can be vacuumed from interior or hosed off exterior.
-

Inspection Checklist:

Below is a check list to follow to ensure all areas of the machinery have been cleaned prior to importation.

Steps	What's Required?	Complete ✓
1	Full interior clean.	
2	Full exterior clean.	
3	Dismantle panels and parts where possible.	
4	Cleaning Certificate completed, ready to be submitted to MPI.	
5	Equipment exported to New Zealand in a dismantled state (as much as possible).	