

# Port Pegasus/ Pikihatiti Salmon Farm Investigations

Natural Character, Landscape and Visual Amenity Graphic Supplement

October 2017



Boffa Miskell





# Port Pegasus Salmon Farm Investigations

Natural Character, Landscape and Visual Amenity Graphic Supplement

October 2017

---

	Contents
Figure 1: Location Plan	1
Figure 2: Stewart Island Geology Plan	2
Figure 3: Stewart Island Land Cover Plan	3
Figure 4: Stewart Island Land Management Plan	4
Figure 5: Proposed Stewart Island Coastal Character Area Plan	5
Figure 6: Proposed Stewart Island Outstanding Natural Landscape Plan	6
Figure 7: Proposed Stewart Island Natural Character Plan	7
Figure 8: Port Pegasus Land Cover Plan	8
Figure 9: Port Pegasus Recorded Cultural History Plan	9
Figure 10: Photograph Location Plan	10







Legend

Geology

cf

Variably foliated biotite granite, leucogranite, granodiorite and tonalite. / Variably foliated granite, granodiorite, diorite / Variably foliated granite, granodiorite, diorite and quartz monzonite with minor syenogranite.

cg

Variably foliated biotite granodiorite orthogneiss.

ekf

Granite, granodiorite and tonalite with subordinate leucogranite, quartz diorite and monzodiorite; locally foliated to gneissic. / Massive and variably foliated granite, granodiorite and tonalite with subordinate diorite and gabbro. /

ekm

Gabbro, gabbro, diorite and leucogabbro with minor anorthositic gabbro, quartz diorite, tonalite and ultramafic rocks; commonly foliated to gneissic. / Variably foliated diorite and monzodiorite with subordinate gabbro, tonalite, granodiorite and granite.

eku

Variably foliated, greenschist to amphibolite facies volcanoclastic sandstone, tuff, breccia and conglomerate; local andesitic and dacitic lavas.

iQa

Unconsolidated to poorly consolidated mud, sand, gravel and peat of alluvial and colluvial origin.

iQd

Sand in mobile and fixed dunes of the coast and rivers.

iQm

Beach sand, gravel, shell and boulder banks of the modern coastal plain; marine gravel, sand and mud beneath low coastal terraces.

iQp

Unconsolidated to poorly consolidated mud, silt, sand and peat of swamp origin.

jf

Biotite granite and granodiorite.

jm

Biotite granodiorite, granite and leucogranite Gabbro, gabbro, anorthosite, diorite, monzodiorite and minor granite.

mQa

Weathered gravel, sand, silt and mud of alluvial and colluvial origin.

sdts

Amphibolite facies pelitic and psammitic schist, quartzite, calc-silicate and amphibolite with pegmatite dikes.

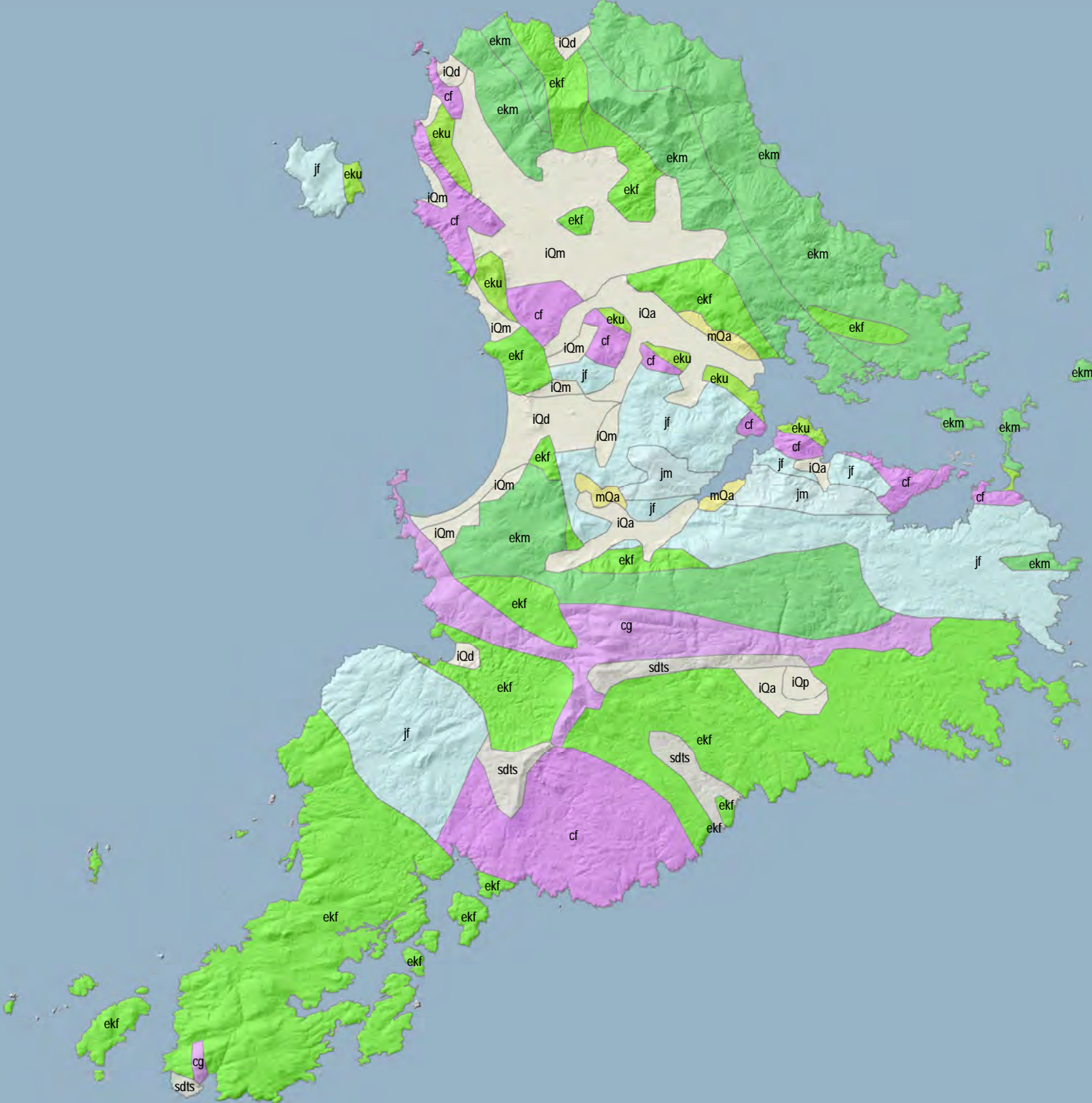
Ym

Norite, gabbro, dunite and diorite with subordinate tonalite and granodiorite.

Data Sources:

1:1,000,000 Geological units digitised from <http://data.gns.cri.nz/geology>

Projection: NZGD 2000 New Zealand Transverse Mercator







Legend

- Marine Farm

Land Cover Database 4

- Indigenous Forest
- Indigenous Shrub, Scrub
- Indigenous Grassland
- Wetlands
- General Agriculture, Horticulture
- Gorse, Broom
- Exotic Forest
- Open Sand, Gravel, Rock
- Open Water
- General Infrastructure

Data Sources:  
Land Cover data sourced from the Ministry for the Environment, LCDB database version 4. (update Dec 2016)

Projection: NZGD 2000 New Zealand Transverse Mercator



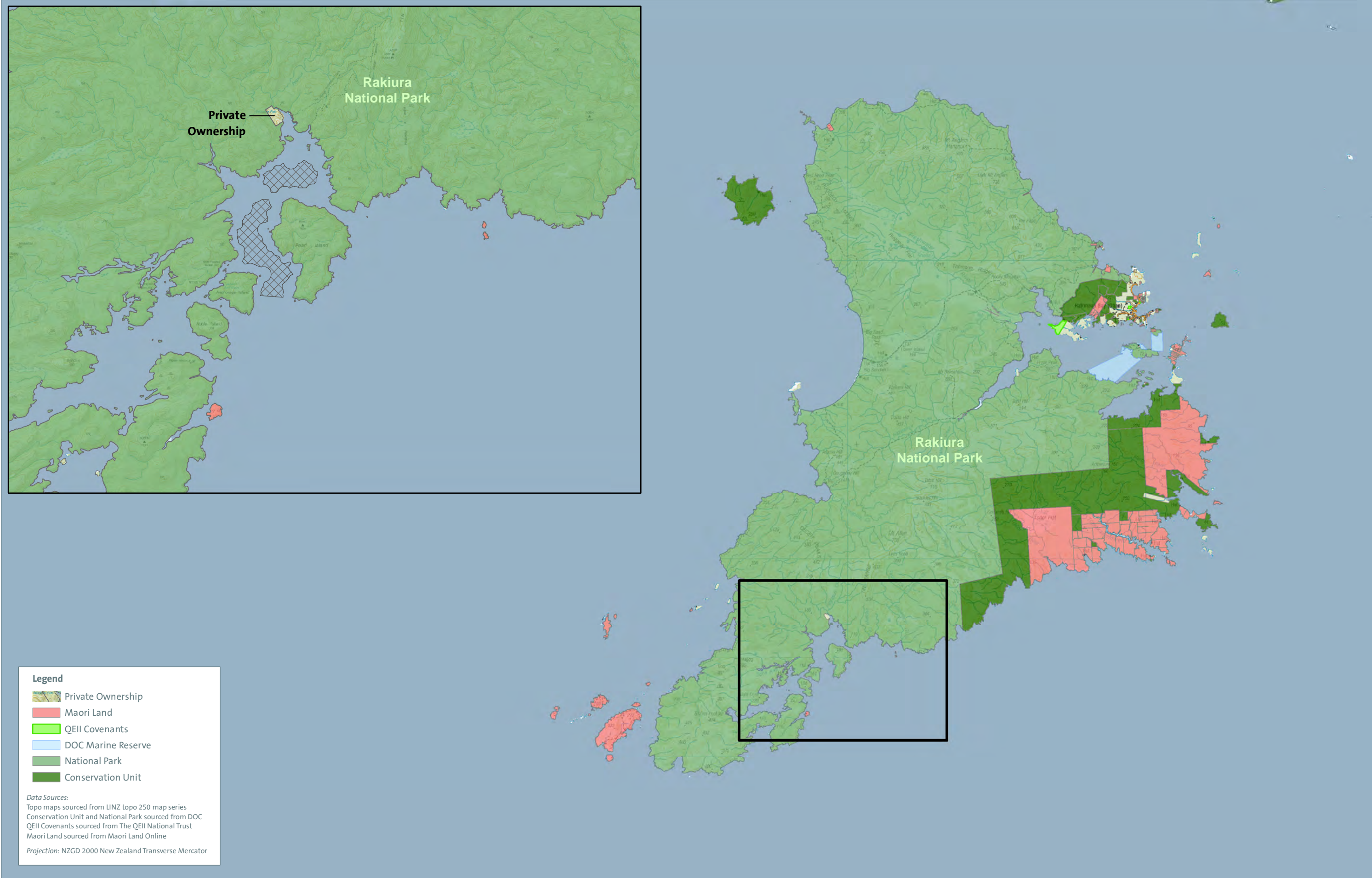
0 10 km  
1:350,000 @ A3

PORT PEGASUS SALMON FARM INVESTIGATIONS  
Figure 3: Stewart Island Land Cover Plan

| Date: October 2017 | Revision: B |

Plan prepared for Ministry of Primary Industries & Environment Southland by Boffa Miskell Limited  
Project Manager: James.Bentley@boffamiskell.co.nz | Drawn: SBi | Checked: JBe









**PORT PEGASUS SALMON FARM INVESTIGATIONS**  
**Figure 5: Proposed Stewart Island Coastal Character Area Plan**





Figure 6: Proposed Stewart Island Outstanding Natural Landscape Plan

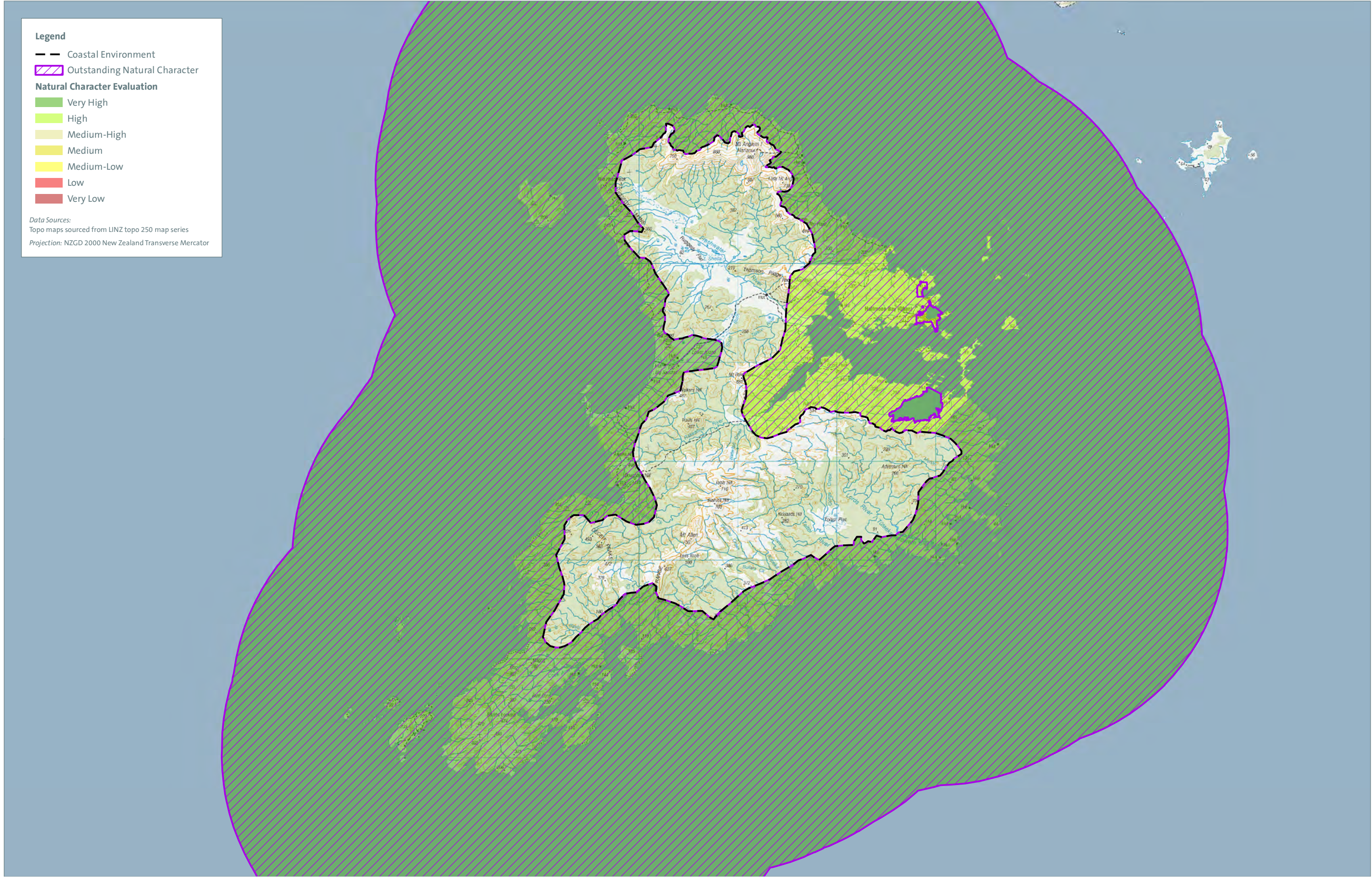
**PORT PEGASUS SALMON FARM INVESTIGATIONS**

**| Date: October 2017 | Revision: B |**

Plan prepared for Ministry of Primary Industries & Environment Southland by Boffa Miskell Limited

Project Manager: James.Bentley@boffamiskell.co.nz | Drawn: SBI | Checked: JBe









PORT PEGASUS SALMON FARM INVESTIGATIONS

Figure 8: Port Pegasus Land Cover Plan

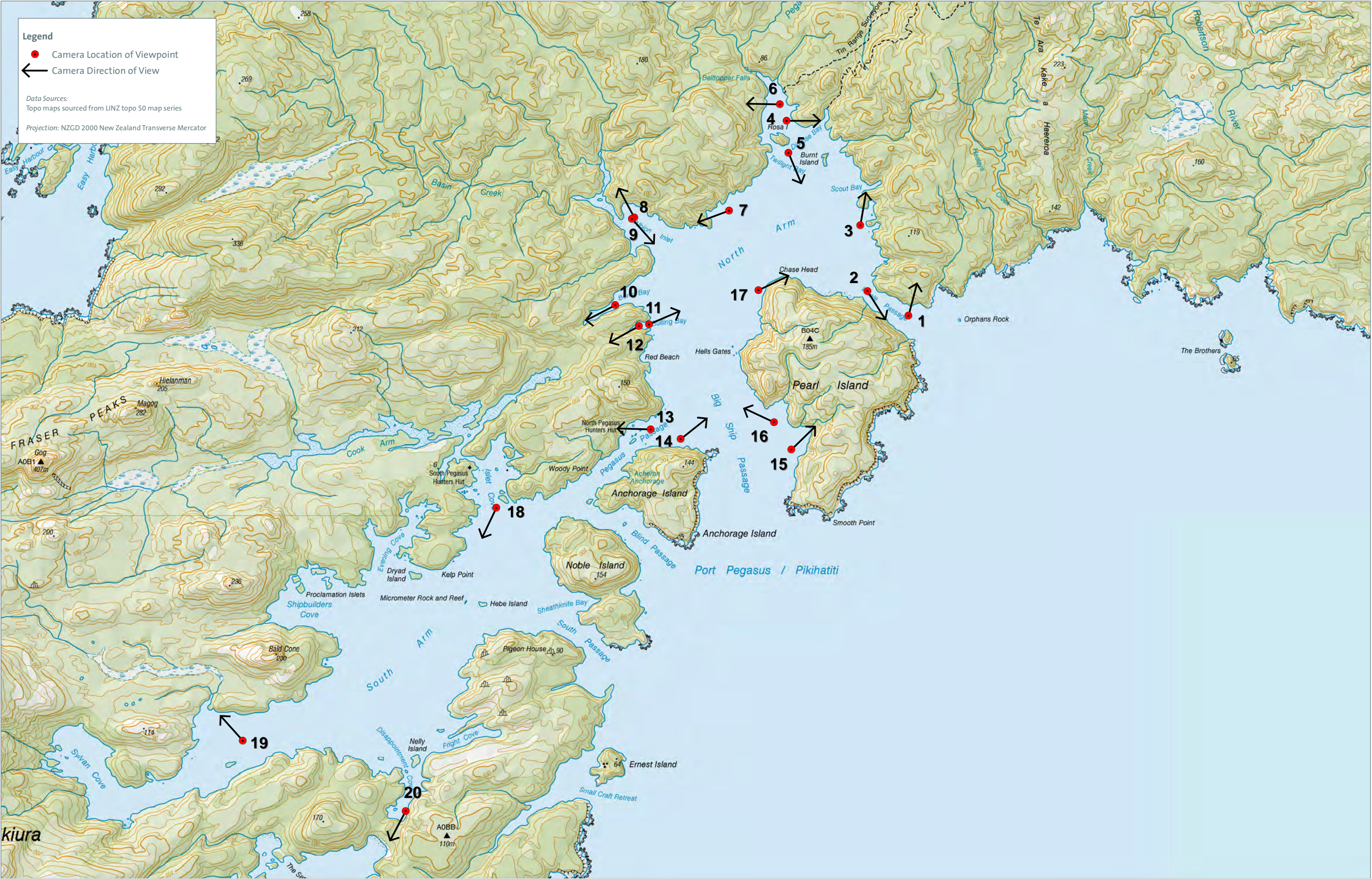
| Date: October 2017 | Revision: B |

Plan prepared for Ministry of Primary Industries & Environment Southland by Boffa Miskell Limited  
Project Manager: James.Bentley@boffamiskell.co.nz | Drawn: SBI | Checked: JBe









**PORT PEGASUS SALMON FARM INVESTIGATIONS**

**Figure 10: Photograph Location Plan**

**| Date: October 2017 | Revision: B |**

Plan prepared for Ministry of Primary Industries & Environment Southland by Boffa Miskell Limited  
Project Manager: James.Bentley@boffamiskell.co.nz | Drawn: SBI | Checked: JBe





Site Photograph 1: The rocky coastal interface of Whale Passage





Site Photograph 2: Looking north from Whale Passage up the western coastal interface of North Arm





Site Photograph 3: The indented coastal fringe immediately south of Scout Bay. The Tin Range is visible beyond.





Site Photograph 4: Immediately north of Diprose Bay





Site Photograph 5: Looking south towards the forest-clad steep slopes of the northern coast of Pearl Island and Chase Head





Site Photograph 6: A concrete plinth indicating the site of the former freezing works, just north of Rosa Island. Much of the vegetation was removed to facilitate the development, which was established at the turn of the 20th Century.





Site Photograph 7: The coastal fringe of the northern coastline of North Arm





Site Photograph 8: The upper parts of Albion Inlet





Site Photograph 9: The waters of North Arm and Whale Passage





Site Photograph 10: Mature indigenous vegetation flanks the shores of Bens Bay





Site Photograph 11: The open water of North Arm





Site Photograph 12: The sandy beach at the head of Bulling Bay





Site Photograph 13:North Pegasus Hunters Hut visible on Pegasus Passage through the vegetation





Site Photograph 14: Waters of North Arm





Site Photograph 15: South-western coastline of Pearl Island





Site Photograph 16: Looking south towards Big Ship Passage





Site Photograph 17: Northern coastline of Pearl Island, close to Chase Head





Site Photograph 18: Islands associated with Islet Cove, South Arm





Site Photograph 19: Looking towards Fraser Peaks in South Arm





Site Photograph 20: Disappointment Cove