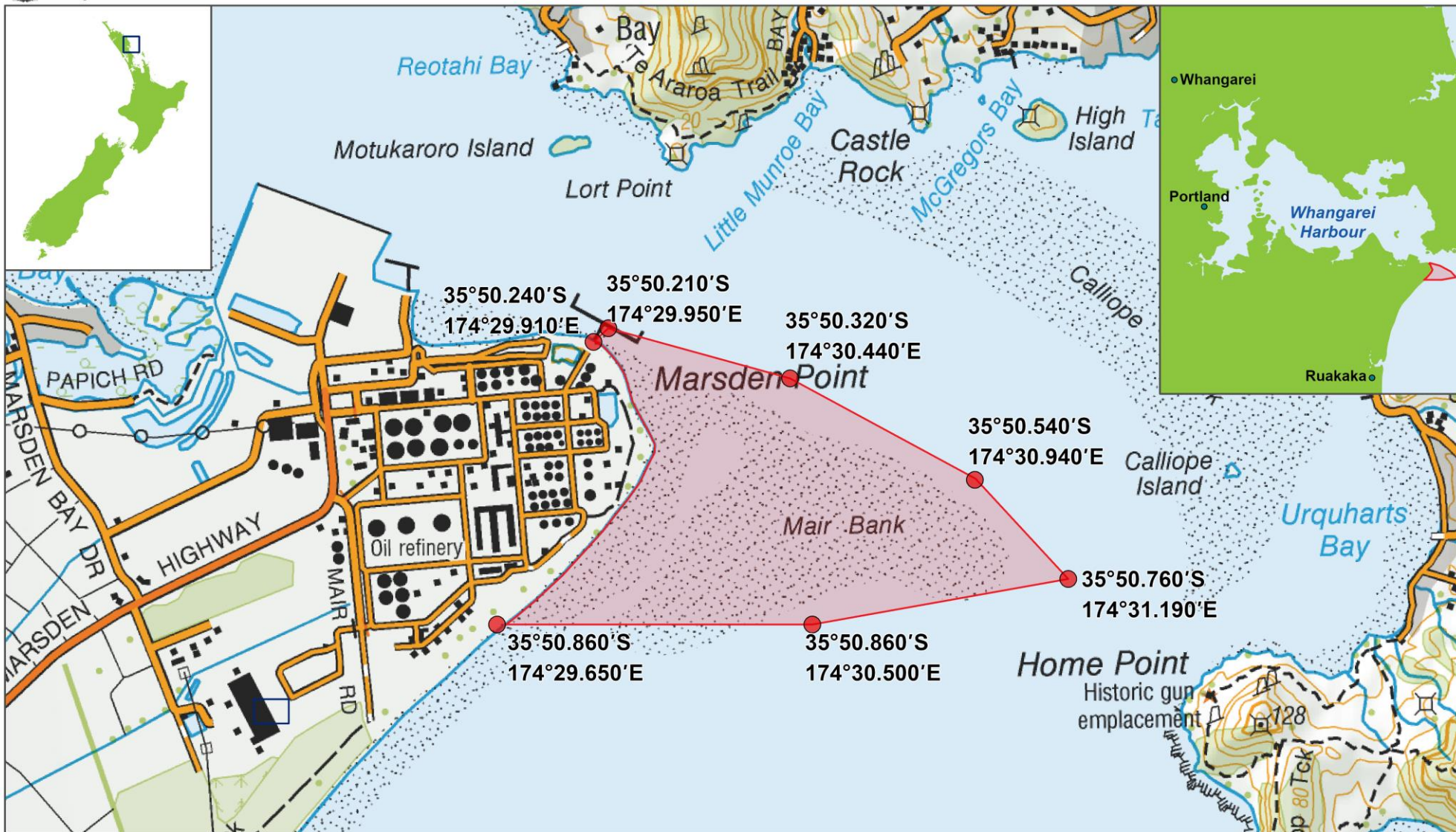
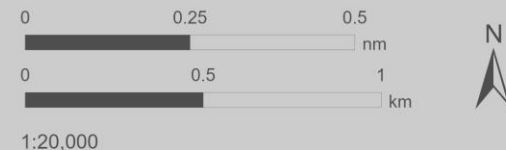


Disclaimer: This map and all information accompanying it (the "Map") is intended to be used as a guide only, in conjunction with other data sources and methods, and should only be used for the purpose for which it was developed. The information shown in this map is derived from various sources and is provided "as is" without any warranty or representation in relation to its accuracy, completeness, reliability, or fitness for a particular purpose. The user of the Map is responsible for ensuring that the Map is suitable for their intended use. The user of the Map is also responsible for ensuring that the Map is suitable for their intended use. The user of the Map is also responsible for ensuring that the Map is suitable for their intended use. The user of the Map is also responsible for ensuring that the Map is suitable for their intended use.



Proposed Mair and Marsden Banks temporary shellfish closure

- Proposed temporary closure coordinate
- Proposed temporary closure boundary



Date: 24/02/2020
Produced by: Spatial Intelligence
Reference: r200035
Coordinate System: WGS 1984

Data Attribution:
This map uses data sourced from LINZ under CC-BY.