



Te whakamaru mōhiohio i kohia mai mā te aroturuki tāhiko

Te Tai Hauāuru

Ka āwhina te aroturuki tāhiko mā te whakamahi i ngā kāmera i runga waka ki te whakamana i ngā pūrongo mai i ngā kaihi arumoni mō ngā mea e mau ana i a rātau, tae atu ki ngā pānga me ngā momo e tiakina ana.

Mai i te 1 o Whiringa-ā-rangi 2019, ka mahi ngā kāmera i runga waka arumoni maha e hī ana i te taha moana mai i Whanganui ki Tauroa (tūtata ki Kaitiāia). Kua kitea ko ngā wai e rere ana i te tai hauāuru o Te Ika-a-Māui koinā te nōhanga o te aihe Māui.

Ko te whāinga he:

- whakaemi i ngā mōhiohio tika mō ngā pānga ki ngā momo e tiakina ana, tae atu ki ngā aihe Māui;
- whakatenatena i te tautuku me te whakarite kia toitū ngā mahi hī ika, ā, ka whakaūngia;
- whakarite wā e taea ai ngā pūnaha me ngā tukanga kāwanatanga te whakatikatika i mua i te whakaaro mō tētahi atu kaupapa kāmera whānui ake.



He aha ngā mea ka hopukina e ngā kāmera?

Ka whakamaui ngā kāmera kia kitea ai ngā mahi hī me te kawē. Ehara i te mea ka kitea ngā wāhi katoa o te raho o te waka, ngā wāhi rānei o te waka kāore i te hāngai ki ngā mahi hī, pērā i te kaupapa o te waka, te nōhanga o ngā kaimahi, te kīhini, ngā whare paku, te rūma mīhini rānei.

Me mātua whakarite te rangatira o te waka kei te kā te pūnaha kāmera ina hao ana, e tuku ana rānei i te kupenga whai karihi ki te wāhi i tohua. Ka tīmata ngā kāmera ki te hopu ina kite ngā pūoko e mau ana i runga i ngā taonga hī kua tīmata he mahi. Ka hopu haere tonu mō te 30 meneti i muri i te mutunga o ngā mahi e kitea ana e ngā pūoko.

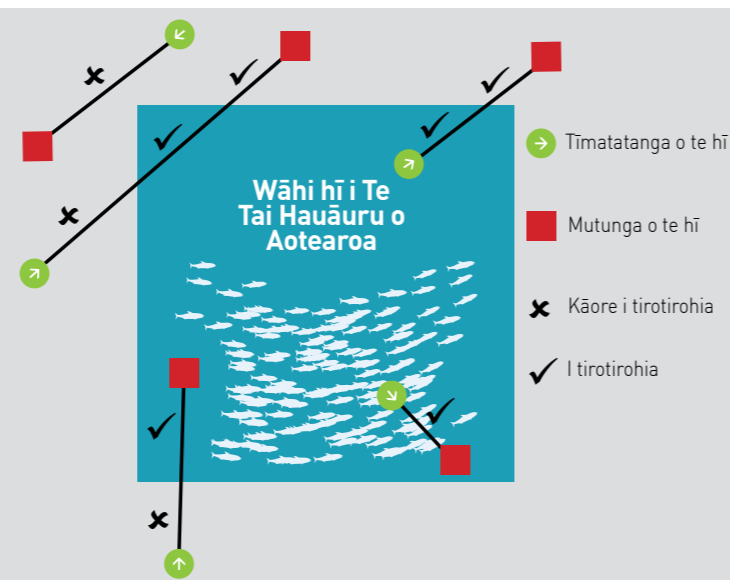
E whakaatu ana tētahi mata kei runga i ia waka he aha e kitea ana e ngā kāmera. E whakaatu ana te mata i tētahi kara whero i te wā e hopu ana ngā kāmera.

Ko ngā mōhiohio hāngai pērā i ngā raraunga pūoko, tuakiri waka, wāhi o te waka, me te tūnga pūnaha ka hopukia anō e te pūnaha kāmera.

He aha ngā whakaaturanga ka tiroirohia?

He tokoiti ngā kaimahi o Te Manatū Ahu Mahi e whai mana ana ki te tiroiro i ngā whakaaturanga o ngā kāmera. Ka tiroirohia e rātau te nuinga o ngā whakaaturanga i te auau tino tere, ā, ka tiroirohia pea ētahi āhuatanga mā ngā tere pōturi ake, pērā i ngā pānga me ngā momo e tiakina ana, ina tiro ana rānei i ngā ika i mau.

Ka kitea anō pea ētahi atu take whai pānga, pērā i te tautuku o ngā mahi hī, ngā take haumarū wāhi mahi rānei. Ina tika ana, ka tukuna ēnei ki ngā tari hāngai kai whaiwhāhā ake (tirohia *He aha ngā mōhiohio e tuarīhia ana e te kāwanatanga?*).



Kei roto pea i ētahi whakaaturanga ko ngā āhuatanga hī ka tīmata i waho paku atu i te wāhi i tautapatia:

- Ina tīmata tētahi āhuatanga hī i roto, ā, ka mutu i waho o te wāhi i tautapatia, ka tiroirohia te katoa o te āhuatanga hī.
- Ina tīmata tētahi āhuatanga hī i waho, ā, ka mutu i roto o te wāhi i tautapatia, ka tiroirohia ko ngā whakaaturanga anake mai roto o te wāhi.
- Ina tīmata tētahi āhuatanga hī i waho, ā, ka mutu anō i waho, engari ka uru ki te wāhi i tautapatia, ko ngā whakaaturanga i tīmata mai i roto tae noa ki te mutunga o te hī ka tiroirohia.

Tērā pea ka mau ētahi whakaaturanga kāore e hiahiaia ana. Hei tauira, mēnā kei te kā te pūnaha kāmera, ā, ka kitea e ngā pūoko ngā mahi me ngā taonga hī kāore i te hāngai ki ngā mahi hī. Ka tirohia ēnei whakaaturanga mō ngā mahi hī hāngai, ā, ki te kore e kitea ka rokirokitia te whakaaturanga engari kāore e tiroirohia.

He pēhea te whakarite a te kāwanatanga kei te noho haumarū ngā mōhiohio?

He mea nui ki a mātau te haumarutanga o ngā mōhiohio. Ka whakahaerehia te whakaū i te haumarutanga me te whakamātautau hangarau ki te pūnaha. Kei roto i tēnei ko ngā mahi pērā i ngā aromatawai whakaraerae, whakamātautau uruhanga me ngā arotake tikanga hei whakarite ka taea e te pūnaha te whakamaru ngā mōhiohio, arumoni tapu hoki i whakaemihia mā ngā kāmera i runga waka.

- Ka manaakitia e Te Manatū Ahu Matua ngā mōhiohio tapu mai i ngā tūmomo ahumahi rerekē, tae atu ki ngā raraunga arumoni mai i ngā ahumahi ahuhenua me te kai, me ngā mōhiohio haumarutanga rohenga.
- I mahi tahi mātau me Te Mana Mātāpono Matatapu me te Āpiha Tūmataitinga Matua a te Kāwanatanga hei tautuhi i ngā whakahaere hei whakamaru i ngā mōhiohio e mōhiohia ai te tangata.
- E whai ana mātau i Ngā Whakaritenga Haumarutanga Whakamarutanga e whakarārangi ana i ngā tūmanako o te kāwanatanga mō te whakahaere i ngā kaimahi, te haumarutanga ōkiko me te mōhiohio. Haere ki: www.protectivesecurity.govt.nz
- Hei āwhina i a mātau kia ū ai ki ngā here o te Ture Mōhiohio me te Ture Matatapu, he aratohu ā mātau mō te tuku i ngā mōhiohio hao ika. Haere ki: www.fisheries.govt.nz/open-data-and-forecasting/fisheries
- He rite tonu tā mātau arotake i ā mātau kaupapahere me te tukanga haumarutanga me te tūmataitinga hei whakarite kei te hāngai ki ngā mahi.
- Kua oti tētahi aromatawai pānga tūmataitinga, hei tautuhi i ngā mōrea tūmataitinga me te tūtohu me pēhea te whakahaere. I whāngai tenei i te whanaketanga o te pūnaha kāmera i runga waka. Haere ki: www.fisheries.govt.nz/camerasWCNI

He aha ngā mōhiohio e tuarīhia ana e te kāwanatanga?

I ētahi wā me tuari mōhiohio mātau hei whakatutuki i ngā herenga o te takohanga me te pūrangiaho o te kāwanatanga, me te ū ki te ture. Ko ngā mahi tuari mōhiohio ka ū ki te Ture Mōhiohio Ōkawa 1982 (OIA), te Ture Matatapu 1993, me te Ture Hao Ika 1996.

Ko ngā tono mōhiohio katoa ka whiriwhirihia e ai ki tēnā tono, ki tēnā tono. Ko te tikanga ka noho huna ngā mōhiohio i raro i te OIA, te Ture Matatapu ina hiahiaia ana kia:

- tiakina te tūmataitinga o tētahi tangata, ētahi tāngata rānei;
- āraia te tukutanga o tētahi kōrero tauhokohoko muna, te āraia i te whakawā wawe rānei o te tūnga arumoni o tētahi tangata, kamupene rānei;
- whakarite ka tukuna haere tonu ngā mōhiohio ā muri ake.

Ka tuarīhia anake ngā mōhiohio me ētahi atu tari kāwanatanga mō ngā kaupapa whāiti, tauwhāiti hoki. Hei tauira, e pā ana ki: te whakaū i te ture, tauwhiro taiao, hauora me te haumarū, haumarū moana, tautukunga, me ngā āhuatanga mahi.

Ina tuari mōhiohio, i te nuinga o te wā kāore e tukuna te katoa o te whakaaturanga. Ko te mea e hiahiaia ana ko te tuku i tētahi whakarāpopototanga ā-tuhi, ngā pikitia rānei. Ina hiahiaia ana kia tuarīhia he whakaaturanga, ngā pikitia rānei, ka whakatikatikahia ēnei hei tiaki i te tuakiritanga whaiaro, arumoni hoki mā te huna i ngā āhuatanga e mōhiohia ai rātau. Ka taea anō te āhei atu ki te tiro whakaaturanga, pikitia rānei te whakawhāiti ki ngā wāhi kāwanatanga, kua te tuku tārua o ngā kōnae.

I raro i te Ture Matatapu, ka āhei ngā tāngata ki te tono kia kitea e rātau ngā mōhiohio e puritia ana e mātau mō rātau. Ka taea anō e te tangata te tono kia whakatikahia e mātau ngā mōhiohio mōna mēnā hei tāna kei te hē, he whakakotiti, he tarepa, kua tawhito rānei.

Kei te hiahia whiwhi kōrero anō koe?

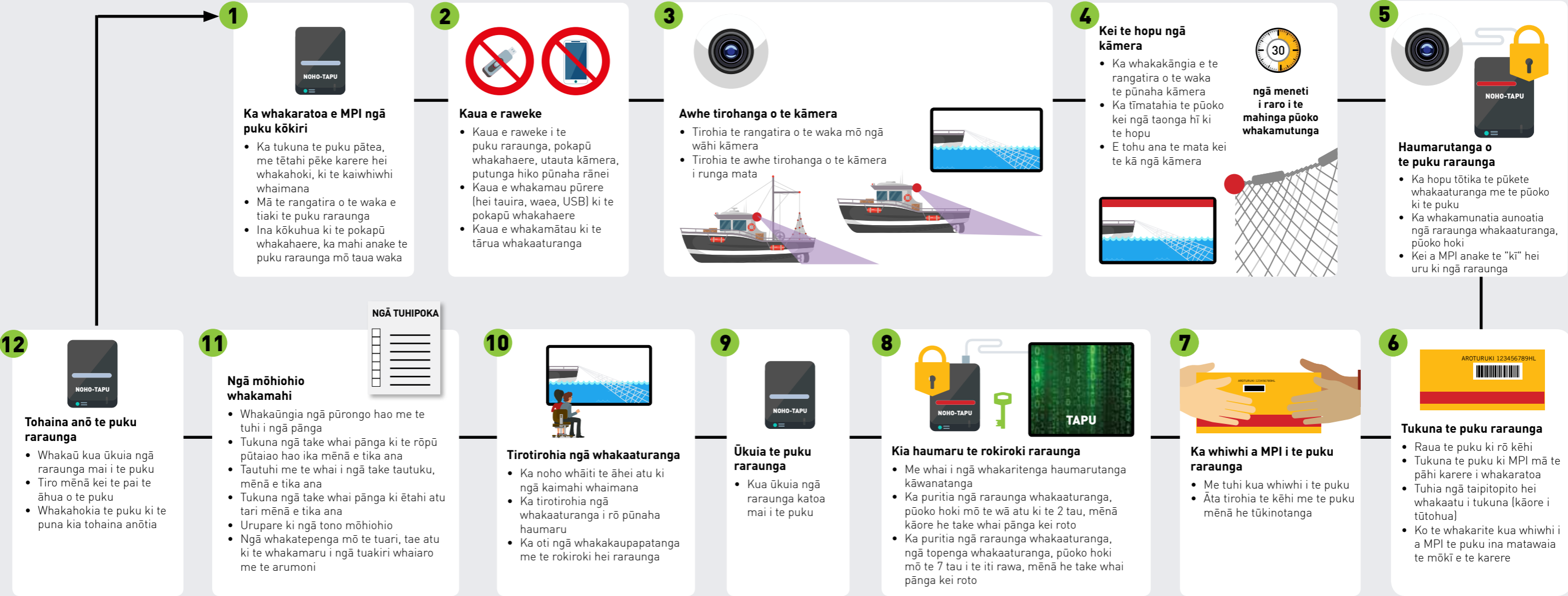
Mēnā he māharahara ōu, kei te hiahia rānei koe i ētahi atu mōhiohio mō te āhua o tā mātau whakarite i ngā mōhiohio whaiaro, tapu hoki, īmēra atu ki te āpiha tūmataitinga matua i CPO@mpi.govt.nz, haere rānei ki www.mpi.govt.nz/privacy

Hei tono i ngā mōhiohio e puritia ana e mātau mōu, te tono rānei i tētahi whakatikatanga, me īmēra atu ki privacyrequests@mpi.govt.nz

Kia whiwhi mōhio anō mō ngā kāmera i runga waka haere ki www.fisheries.govt.nz/camerasWCNI, īmēra rānei ki onboardcameras@mpi.govt.nz

Hei whakapā mai mā runga waea, waea ki: **0800 00 83 33** (i roto o Aotearoa), ki **+64-4-830 1574** rānei (i waho o Aotearoa).

Ngā upane hira mō te whakamaru mōhiohio i mau mai mā te aroturuki tāhiko



1



Ka whakaratoa e MPI ngā puku kōkiri

- Ka tukuna te puku pātea, me tētahi pēke karere hei whakahoki, ki te kaiwhiwhi whaimana
- Mā te rangatira o te waka e tiaki te puku raraunga
- Ina kōkūhua ki te pokapū whakahaere, ka mahi anake te puku raraunga mō taua waka

2



Kaua e raweke

- Kaua e raweke i te puku raraunga, pokapū whakahaere, utauta kāmera, putunga hiko pūnaha rānei
- Kaua e whakamau pūrere (hei tauira, waea, USB) ki te pokapū whakahaere
- Kaua e whakamātau ki te tārua whakaaturanga

3



Awhe tirohanga o te kāmera


- Tirohia te rangatira o te waka mō ngā wāhi kāmera
- Tirohia te awhe tirohanga o te kāmera i runga mata




4

Kei te hopu ngā kāmera

- Ka whakakāngia e te rangatira o te waka te pūnaha kāmera
- Ka tīmatahia te pūoko kei ngā taonga hī ki te hopu
- E tohu ana te mata kei te kā ngā kāmera



ngā meneti i raro i te mahinga pūoko whakamutunga



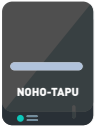
5



Haumarutanga o te puku raraunga

- Ka hopu tōtika te pūketē whakaaturanga me te pūoko ki te puku
- Ka whakamunatia aunoatia ngā raraunga whakaaturanga, pūoko hoki
- Kei a MPI anake te "ki" hei uru ki ngā raraunga

12




Tohaina anō te puku raraunga

- Whakaū kua ūkuia ngā raraunga mai i te puku
- Tiro mēnā kei te pai te āhua o te puku
- Whakahokia te puku ki te puna kia tohaina anōtia

11

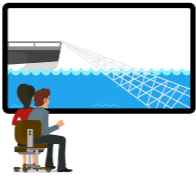
NGĀ TUHIPOKA



Ngā mōhiohio whakamahi

- Whakaūngia ngā pūrongo hao me te tuhi i ngā pānga
- Tukuna ngā take whai pānga ki te rōpū pūtaiao hao ika mēnā e tika ana
- Tautuhi me te whai i ngā take tautuku, mēnā e tika ana
- Tukuna ngā take whai pānga ki ētahi atu tari mēnā e tika ana
- Urupare ki ngā tono mōhiohio
- Ngā whakatepanga mō te tuari, tae atu ki te whakamaru i ngā tuakiri whaiaro me te arumoni

10



Tiroirohia ngā whakaaturanga

- Ka noho whāiti te āhei atu ki ngā kaimahi whaimana
- Ka tiroirohia ngā whakaaturanga i rō pūnaha haumaruru
- Ka oti ngā whakakaupapatanga me te rokiroki hei raraunga

9



Ūkuia te puku raraunga

- Kua ūkuia ngā raraunga katoa mai i te puku


8



Kia haumaruru te rokiroki raraunga

- Me whai i ngā whakaritenga haumarutanga kāwanatanga
- Ka puritia ngā raraunga whakaaturanga, pūoko hoki mō te wā atu ki te 2 tau, mēnā kāore he take whai pānga kei roto
- Ka puritia ngā raraunga whakaaturanga, ngā topenga whakaaturanga, pūoko hoki mō te 7 tau i te iti rawa, mēnā he take whai pānga kei roto


7



Ka whiwhi a MPI i te puku raraunga

- Me tuhi kua whiwhi i te puku
- Āta tirohia te kēhi me te puku mēnā he tūkinotanga

6



Tukuna te puku raraunga

- Raua te puku ki rō kēhi
- Tukuna te puku ki MPI mā te pāhi karere i whakaratoa
- Tuhia ngā taipitopito hei whakaatu i tukuna (kāore i tūtohua)
- Ko te whakarite kua whiwhi i a MPI te puku ina matawaia te mōkī e te karere