



## Statistical Release

### HIGHLIGHTS

- › Total forestry export earnings increased NZ\$32.7 million (3.0 percent) to NZ\$1.1 billion in the September 2011 quarter. Export log earnings continue to be strong rising by NZ\$77.2 million (25.8 percent) due to strong demand and high log prices, partially offset by a NZ\$31.4 million (13.6 percent) fall in sawn timber export earnings.
- › China continues to dominate New Zealand's log export market, with volumes rising 32.6 percent, to a record high of 2.2 million cubic metres since the series began in 1988. There are, however, indications in recent months that this demand is easing.
- › Total roundwood removals were up 395 000 cubic metres (6.2 percent) to an estimated 6.8 million cubic metres this quarter.
- › Sawn timber production fell 113 000 cubic metres over the quarter due to a combination of high log prices, weak domestic demand and a high exchange rate.
- › The annual value of forestry exports increased 13.9 percent to NZ\$4.6 billion over the year ending 30 September 2011, due to continued high demand for logs from China. Forestry accounted for 10.1 percent of total merchandise exports, compared with 10.0 percent in the year ending 30 September 2010.

## FORESTRY PRODUCTION AND TRADE

FOR THE SEPTEMBER 2011 QUARTER

Figures in this release are compared with the same quarter of the previous year (September 2010) unless otherwise stated. These figures are not seasonally adjusted.

### Harvesting activity

New Zealand roundwood removals increased 395 000 cubic metres (6.2 percent) to an estimated 6.8 million cubic metres this quarter, mainly due to sustained demand for export logs, partially offset by a fall in domestic saw logs, down 203 000 cubic metres (10.2 percent) over the same period.

Log exports continue to underpin harvesting in New Zealand accounting for 48.0 percent of total removals this quarter compared with 42.7 percent in the September 2010 quarter.

Figure 1: Roundwood removals – quarterly volumes



### Export logs

Total log export earnings continued to be strong increasing by NZ\$77.2 million (25.8 percent) to NZ\$376.8 million, despite volatile exchange rates over the September 2011 quarter. Log export volumes increased 531 000 cubic metres (19.5 percent) to 3.2 million cubic metres. This is the fourth consecutive quarter log export volumes have totalled more than three million cubic metres, however, export volumes have eased back slightly from the peak recorded earlier in 2011.



The all-grade average export log price was steady on NZ\$130.0 per Japanese Agricultural Standard (JAS) cubic metre compared with the September 2010 quarter, although it was down quarter on quarter since March 2011 from a peak of NZ\$150.0 per JAS cubic metre.<sup>1</sup>

Log export trade continues to be dominated by China, with volumes up 32.6 percent to a record high of 2.2 million cubic metres this quarter. There are, however, some signs since September 2011 of weakening demand in China as log inventories have increased to record levels and competition is growing from increased imports of competitively priced logs from North America.<sup>2</sup>

Log export volumes to Japan increased 15.1 percent this quarter, to 182 000 cubic metres, while exports to other major markets decreased over the same period. Most notable were volumes to Korea, down 22 000 cubic metres (3.8 percent).

## Sawn timber production

High domestic log prices, coupled with weak domestic demand and volatile international prices continue to weigh heavily upon the New Zealand sawmilling industry. Total sawn timber production fell 113 000 cubic metres (10.2 percent) to 996 000 cubic metres this quarter, along with sawmillers reducing their stock holdings by 48 000 cubic metres (down 9.2 percent) from the September 2010 quarter.

Most notably sawn timber production in the Central North Island wood supply region fell by 84 000 cubic metres (17.4 percent) to 398 000 cubic metres, and was affected by further downscaling of mills over the quarter, as reported by sawmill survey respondents.<sup>3</sup> This is the fourth consecutive quarter production has declined in this region. Most other regions have experienced decreased production this quarter except for Gisborne/Hawke's Bay and Canterbury regions,

up 9.7 percent (13 000 cubic metres) and 2.8 percent (1000 cubic metres) respectively. While the rebuild of affected areas in Christchurch has not commenced in earnest, market commentators continue to be optimistic that demand is expected to lift once this is underway.

Sawmillers continue to operate under a difficult environment due to continued weak domestic and international demand coupled with a 2.5 percent increase in the average all-grade domestic log price to NZ\$99.0 per tonne at mill gate this quarter.<sup>4</sup> Although domestic log prices have dropped back from the peak of NZ\$101.0 per tonne at mill gate, in the June 2011 quarter, this log price series has remained above NZ\$90.0 per tonne at mill gate since the June 2010 quarter.

## Sawn timber exports

Total sawn timber export earnings fell by NZ\$31.4 million (13.6 percent) to NZ\$200.2 million, while sawn timber export volumes increased slightly, up 16 000 cubic metres (3.1 percent) to 538 000 cubic metres. Earnings from most major markets contributed to this fall, mainly due to the New Zealand dollar remaining high. The weak US housing construction market also contributed to the NZ\$7.6 million (20.2 percent) fall in earnings from the United States. Australia and Japan were the exception, with earnings increasing slightly by NZ\$2.2 million (5.3 percent) and NZ\$0.9 million (9.2 percent) respectively.

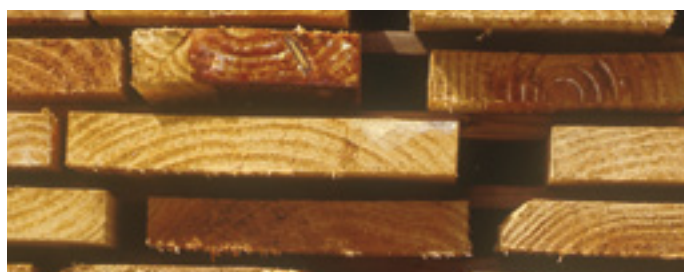


Figure 2: Log exports by country of destination – quarterly volumes

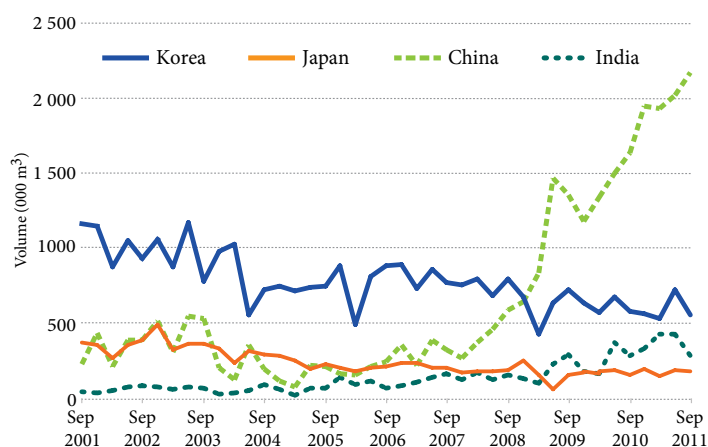
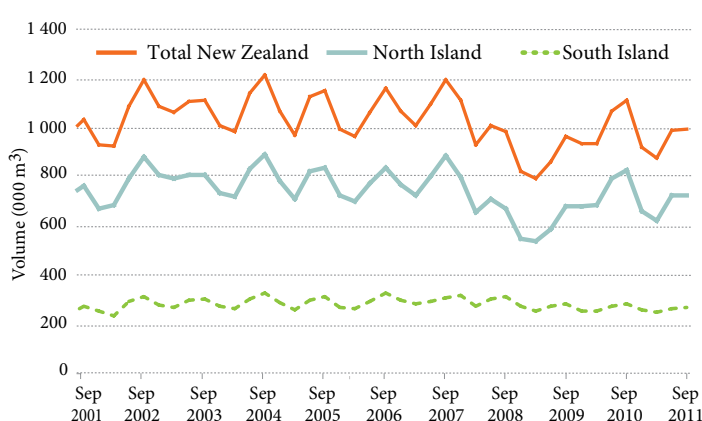


Figure 3: Sawn timber production – quarterly volumes



## Panel production

Total panel production increased 13 000 cubic metres (2.6 percent) to 521 000 cubic metres this quarter, mainly due to a 10 000 cubic metre (5.7 percent) rise in fibreboard production over the quarter.

## Panel exports

While plywood export earnings increased NZ\$7.3 million (22.3 percent), earnings from particleboard exports fell marginally by 0.6 percent, despite a rise in particleboard volumes.

Plywood and particleboard export volumes increased 5000 cubic metres (24.5 percent) and 3000 cubic metres (17.0 percent) respectively, mainly due to increased export volumes of these products to Japan. Demand in Japan for wood panel products remains strong following the natural disasters in March 2011, with plywood and particleboard volumes up 4000 cubic metres (84.4 percent) and 3000 cubic metres (21.2 percent) respectively.

## Pulp and paper production

Total pulp production fell by 16 000 air-dry tonnes (3.8 percent) to 394 000 air-dry tonnes this quarter, mainly due to a 18 000 air-dry tonne (7.8 percent) fall in chemical pulp production. High prices for pulp logs and low volumes of sawmill residues continue to affect pulp production in New Zealand.

## Pulp and paper exports

Total pulp export earnings fell marginally by NZ\$1.6 million (1.1 percent), due to a NZ\$3.1 million (10.5 percent) fall in mechanical pulp earnings, offset by a NZ\$1.5 million

(1.3 percent) increase in chemical pulp export earnings. Total pulp export volumes increased 8.9 percent to 212 000 tonnes, due to increased chemical pulp exports volumes over the quarter, up 23 000 tonnes (17.2 percent). Mechanical pulp exports fell 8.3 percent to 58 000 tonnes, due to lower demand from Japan.

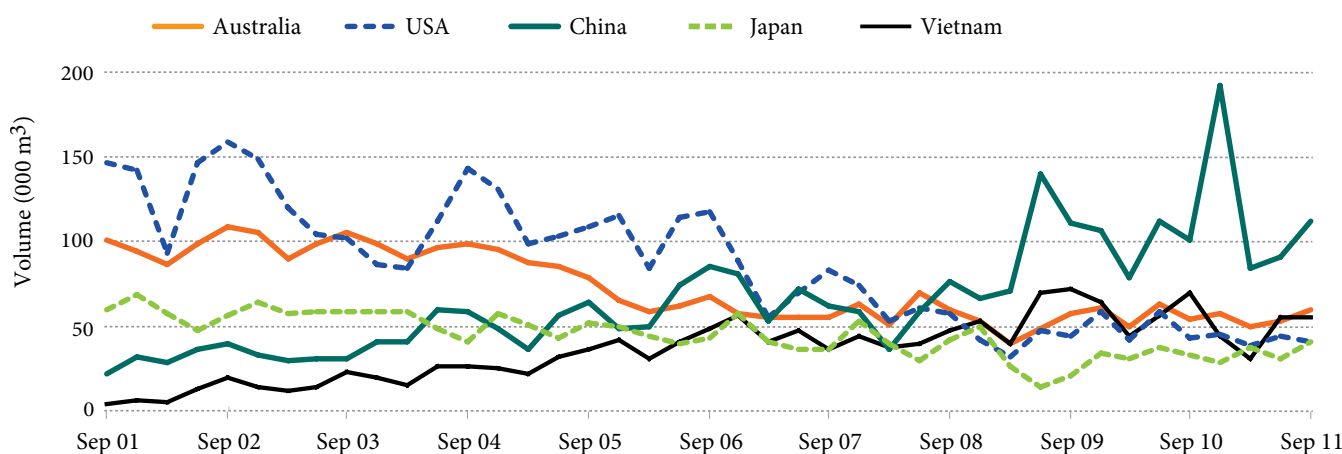
Export volumes to China and Korea were the main contributors to the increase in chemical pulp exports, up 14 000 tonnes (29.8 percent) and 6000 tonnes (28.5 percent) respectively. While mechanical pulp exports to Japan fell 6000 tonnes (9.0 percent), volumes have recovered from the low recorded in the June 2011 quarter, increasing by 40 000 tonnes (233.7 percent) as paper producing plants in Japan recover from the natural disasters in March 2011.<sup>5</sup>

New Zealand paper production decreased by 2000 tonnes (1.0 percent) to 223 000 tonnes. This can be attributed to a 6000 tonne (3.9 percent) fall in other paper and paperboard production, partially offset by a 5.2 percent rise in newsprint production. Total paper stock holdings reduced by 3.0 percent to 59 000 tonnes.

Table 1: Quarterly production<sup>6</sup>

	SEPTEMBER 2011 QUARTER (000)	CHANGE FROM SEPTEMBER 2010 QUARTER (%)
Roundwood (m <sup>3</sup> )	6 764	6.2
Sawn timber (m <sup>3</sup> )	996	-10.2
Wood pulp (t)	394	-3.8
Paper (t)	223	-1.0
Fibreboard (m <sup>3</sup> )	189	5.7
Veneer (m <sup>3</sup> )	188	-1.3
Plywood (m <sup>3</sup> )	103	1.0
Particleboard (m <sup>3</sup> )	42	11.3

Figure 4: Sawn timber exports by country of destination – quarterly volumes



## Annual production and trade for the year ending 30 September 2011

**Table 2: Quarterly export quantities<sup>6</sup>**

	SEPTEMBER 2011 QUARTER (000)	CHANGE FROM SEPTEMBER 2010 QUARTER (%)
Logs and poles (m <sup>3</sup> )	3 248	19.5
Sawn timber (m <sup>3</sup> )	538	3.1
Pulp (t)	212	8.9
Fibreboard <sup>7</sup>	S	S
Plywood (m <sup>3</sup> )	27	24.5
Particleboard (m <sup>3</sup> )	21	17.0

**Table 3: Quarterly export values<sup>6, 8</sup>**

	SEPTEMBER 2011 QUARTER (000)	CHANGE FROM SEPTEMBER 2010 QUARTER (%)
Logs and poles	376 789	25.8
Sawn timber	200 182	-13.6
Pulp	150 636	-1.1
Fibreboard	61 348	1.0
Plywood	39 781	22.3
Particleboard	11 910	-0.6
Other forestry products	271 237	-6.6
<b>Total forestry exports</b>	<b>1 111 883</b>	<b>3.0</b>

The total value of forestry exports increased NZ\$558.1 million (13.9 percent) to NZ\$4.6 billion, due to sustained high levels of log exports over the year ending 30 September 2011. Forestry comprises 10.1 percent of New Zealand's total merchandise exports in this period, compared with 10.0 percent in the year ending 30 September 2010.

### ROUNDWOOD REMOVALS

New Zealand roundwood removals increased 2.7 million cubic metres (11.4 percent) to an estimated 26.1 million cubic metres.

### EXPORT LOGS

Total log export earnings were up NZ\$501.2 million (41.9 percent) to NZ\$1.7 billion while export log volumes increased 27.6 percent to 12.8 million cubic metres over the year ending 30 September 2011.

China continues to dominate New Zealand's log export market, with earnings and volumes up NZ\$396.0 million (58.1 percent) to NZ\$1.1 billion and 2.4 million cubic metres (42.6 percent) to 8.1 million cubic metres respectively.

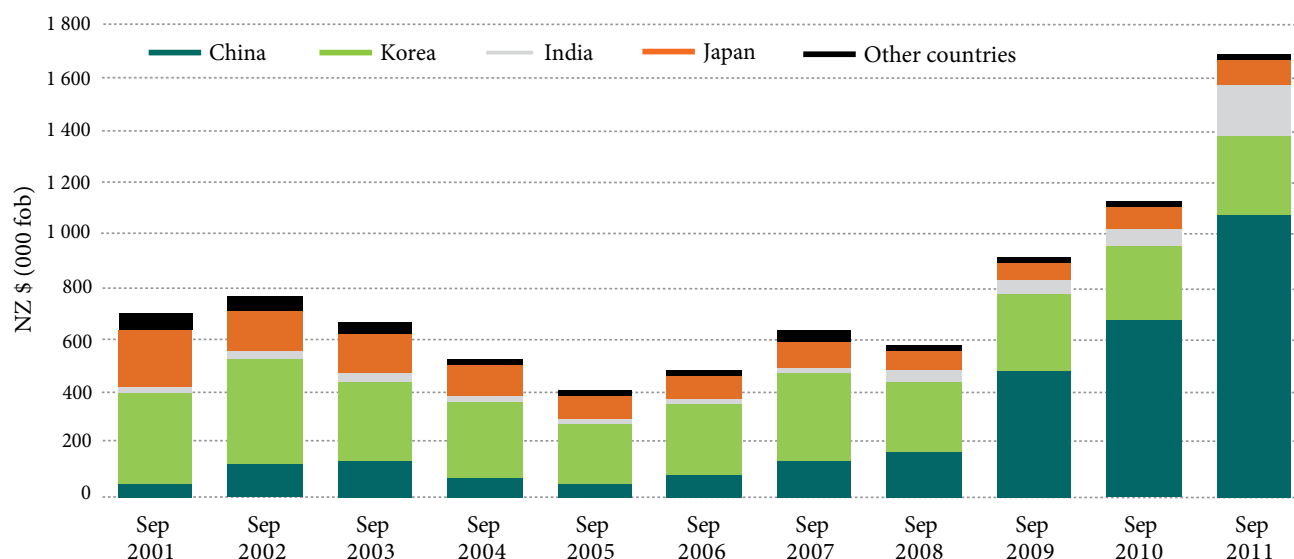
### SAWN TIMBER PRODUCTION

New Zealand sawn timber production fell 270 000 cubic metres (6.7 percent) to 3.8 million cubic metres over the year ending 30 September 2011.

### SAWN TIMBER EXPORTS

While sawn timber export earnings fell 7.1 percent to NZ\$770.4 million, volumes increased 4.2 percent to 2.0 million cubic metres.

**Figure 5: Log exports by country of destination – annual earnings**



## PANEL PRODUCTS PRODUCTION

Production of all panel products increased over the year ending 30 September 2011, led by a 89 000 cubic metre (14.5 percent) increase in veneer production to 704 000 cubic metres.

## PANEL PRODUCTS EXPORTS

The export value and volume of panel products both increased over the year ending 30 September 2011, up 7.6 percent and 12.7 percent respectively.

## PULP AND PAPER PRODUCTION

Total pulp production fell 16 000 air-dry tonnes (1.0 percent) to 1.56 million air-dry tonnes over the year ending 30 September 2011, mainly due to a fall in chemical pulp production, down 23 000 air-dry tonnes (2.7 percent).

## PULP AND PAPER EXPORTS

Total pulp export earnings increased NZ\$7.5 million (1.2 percent) to NZ\$620.6 million and volumes increased 5000 tonnes (0.7 percent) to 800 000 tonnes over the same period.

New Zealand paper production fell marginally, down 3000 tonnes (0.3 percent) to 920 000 tonnes over the year ending 30 September 2011.

## IMPORTS

The total value of forestry imports increased NZ\$15.1 million (1.1 percent) to NZ\$1.4 billion over the year ending 30 September 2011. This represents 3.1 percent of total

merchandise imports, compared with 3.5 percent in the year ending 30 September 2010.

Imports of wood pulp and other forestry products were the main contributors to the increase in value, up NZ\$4.8 million (28.9 percent) and NZ\$16.1 million (3.9 percent) respectively. This was partially offset by a 1.3 percent (NZ\$9.0 million) fall in expenditure on paper and paperboard imports.

Sawn timber import volumes increased 8000 cubic metres (20.2 percent) to 45 000 cubic metres, mainly due to imported volumes from China and USA, up 3000 cubic metres (933.0 percent) and 2000 cubic metres (61.8 percent) respectively.

**Table 4: Annual production quantities<sup>6</sup>**

	SEPTEMBER 2011 YEAR (000 m <sup>3</sup> )	CHANGE FROM SEPTEMBER 2010 YEAR (%)
Roundwood (m <sup>3</sup> )	26 107	11.4
Sawn timber (m <sup>3</sup> )	3 780	-6.7
Wood pulp (t)	1 564	-1.0
Paper (t)	920	-0.3
Fibreboard (m <sup>3</sup> )	692	2.3
Veneer (m <sup>3</sup> )	704	14.5
Plywood (m <sup>3</sup> )	382	14.3
Particleboard (m <sup>3</sup> )	154	9.2

**Table 5: Annual export quantities and values<sup>6, 8</sup>**

	EXPORT VOLUME		EXPORT VALUE	
	SEPTEMBER 2011 YEAR (000)	CHANGE FROM SEPTEMBER 2010 YEAR (%)	SEPTEMBER 2011 YEAR (NZ\$000)	CHANGE FROM SEPTEMBER 2010 YEAR (%)
Logs and poles (m <sup>3</sup> )	12 815	27.6	1 696 847	41.9
Sawn timber (m <sup>3</sup> )	2 027	4.2	770 416	-7.1
Pulp (t)	800	0.7	620 589	1.2
Paper and paperboard (t) <sup>10</sup>	390	1.4	398 930	7.2
Panel products (m <sup>3</sup> )	928	12.7	471 945	7.6
Other forestry products	-	-	601 042	8.8
<b>Total forestry exports<sup>9</sup></b>	-	-	<b>4 559 769</b>	<b>13.9</b>
<b>Total exports</b>	-	-	<b>44 979 278</b>	<b>12.5</b>
<b>Forestry percentage of total exports</b>	-	-	<b>10.1%</b>	-

**Table 6: Annual import quantities and values<sup>6, 10</sup>**

	IMPORT VOLUME		IMPORT VALUE	
	SEPTEMBER 2011 YEAR (000)	CHANGE FROM SEPTEMBER 2010 YEAR (%)	SEPTEMBER 2011 YEAR (NZ\$000)	CHANGE FROM SEPTEMBER 2010 YEAR (%)
Logs and poles (m <sup>3</sup> )	4	-4.0	3 378	-6.3
Sawn timber (m <sup>3</sup> )	45	20.2	52 885	2.8
Pulp (t)	21	25.1	21 388	28.9
Paper and paperboard (t)	461	-0.8	687 352	-1.3
Panel products (m <sup>3</sup> )	42	-31.1	41 375	8.9
Furniture and furniture parts	-	-	196 526	-0.7
Other forestry products	-	-	432 518	3.9
<b>Total forestry imports</b>	-	-	<b>1 435 420</b>	<b>1.1</b>
<b>Total imports</b>	-	-	<b>46 065 313</b>	<b>12.9</b>
<b>Forestry percentage of total imports</b>	-	-	<b>3.1%</b>	-

## Information about the forestry quarterly surveys

The forestry quarterly surveys provide a regular and comprehensive review of New Zealand's forestry production activity. MAF publishes statistics for multiple wood products such as logs, sawn timber, panels, pulp and paper on a quarterly and annual basis. The survey population represents approximately 240 timber, panel, pulp and paper mills located in New Zealand.

Confidentiality rules are applied to all tables in the form of rounding and aggregation to maintain respondent privacy.

The target response rate across all forestry quarterly surveys is 85 percent. The total response rate for the September 2011 quarter was 91 percent, with a 100 percent response rate from all surveyed panel, pulp and paper mills.

To find out more about the forestry quarterly surveys or to search for more data, please go to the Ministry of Agriculture and Forestry website at <http://www.maf.govt.nz/news-resources/statistics-forecasting/forestry.aspx> or free phone 0800 008 333.

## Information about the forestry trade data

The forestry trade data used in this release is sourced from Statistics New Zealand and compiled by Information and Analysis, Ministry of Agriculture and Forestry.

To find out more about overseas trade data or to search for more data, please go to the Statistics New Zealand website at [www.stats.govt.nz](http://www.stats.govt.nz) or free phone 0508 525 525.

## Notes

1. NZX Agrifax (November 2011) *Forestry Market Report*, p. 2.
2. Ministry of Agriculture and Forestry (2011) *Indicative Radiata Pine Log Prices (Export)*. Retrieved from <http://www.maf.govt.nz/news-resources/statistics-forecasting/forestry/indicative-new-zealand-radiata-pine-log-prices.aspx>.
3. Ministry of Agriculture and Forestry (2011) *Quarterly Survey of Sawmills*. September 2011 quarter comments provided by survey respondents.
4. Ministry of Agriculture and Forestry (2011) *Indicative Radiata Pine Log Prices (Domestic)*. Retrieved from <http://www.maf.govt.nz/news-resources/statistics-forecasting/forestry/indicative-new-zealand-radiata-pine-log-prices.aspx>.
5. Resource Recycling (2011) *Paper production crumbles in Japan*. Retrieved from <http://www.resource-recycling.com/node/1060>.
6. All production figures since the June 2010 quarter in this release are provisional; all June 2011 trade figures are provisional.
7. Fibreboard export volume and value is suppressed for the September 2011 quarter due to data quality issues from Statistics New Zealand. Updated data will be supplied in the December 2011 quarterly report.
8. Export values are NZ\$ free on board (fob) the value of goods at New Zealand ports before export, includes cost of transport to port.
9. Excludes newsprint exports. This is suppressed to comply with Statistics New Zealand confidentiality rules.
10. Import values are NZ\$ cost of goods including insurance and freight to New Zealand (cif).

Published by MAF Policy  
Ministry of Agriculture and Forestry  
Pastoral House, 25 The Terrace  
PO Box 2526, Wellington 6140  
New Zealand  
Tel: +64 4 894 0100 or 0800 008 333  
Fax: +64 4 894 0741  
Web: [www.maf.govt.nz](http://www.maf.govt.nz)

Statistical Release 04/2011

Published December 2011  
ISSN: 0114-5371

© Crown copyright 2011 – Ministry of Agriculture and Forestry. This document may be copied providing its source is acknowledged.

While every effort has been made to ensure the information in this publication is accurate, the Ministry of Agriculture and Forestry does not accept any responsibility or liability for error of fact, omission, interpretation or opinion that may be present, nor for the consequences of any decisions based on this information.

#### **FURTHER INFORMATION**

This release and detailed tables of the series discussed in this release are available on our website: [www.maf.govt.nz](http://www.maf.govt.nz)

#### **CONTACT**

Information and Analysis  
Ministry of Agriculture and Forestry  
Tel: +64 4 894 0100 or 0800 008 333  
Email: [stats\\_info@maf.govt.nz](mailto:stats_info@maf.govt.nz)  
Web: [www.maf.govt.nz](http://www.maf.govt.nz)

**Table 1: Quarterly sawn timber production<sup>1, 2</sup>**

(units: 000 cubic metres of sawn timber)

	Sawn timber from indigenous forests for the quarter ended <sup>3</sup>				Sawn timber from planted forests for the quarter ended				Total sawn timber production for the quarter ended			
	31 Mar	30 Jun	30 Sep	31 Dec	31 Mar	30 Jun	30 Sep	31 Dec	31 Mar	30 Jun	30 Sep	31 Dec
<b>North Island</b>												
1999	1	1	1	0	590	674	736	692	591	675	737	692
2000	1	1	1	0	690	741	751	671	691	742	752	671
2001	1	1	1	1	637	707	761	671	638	708	762	672
2002	2	1	1	1	685	794	878	806	687	795	879	807
2003	1	1	1	1	793	807	807	732	794	808	807	733
2004	1	1	1	1	718	833	888	782	719	834	888	783
2005	1	1	0	1	710	823	837	722	711	824	837	723
2006	1	0	1	1	702	770	834	769	702	771	835	770
2007	0	1	0	0	725	802	888	797	725	803	888	797
2008	0	1	1	0	656	707	672	548	656	708	673	548
2009	1	0	0	0	539	585	679	682	540	585	679	683
2010	R	0	0	0	682	795	825	661	683	795	826	662
2011	P	0	0	0	623	725	724		623	726	725	
<b>South Island</b>												
1999	7	7	7	7	196	238	263	233	203	245	270	240
2000	6	7	7	6	250	263	271	244	256	270	278	250
2001	5	7	6	6	242	247	272	256	247	254	278	262
2002	5	5	4	3	237	293	314	280	242	298	318	283
2003	3	3	4	3	270	297	306	274	273	300	309	278
2004	2	3	3	2	267	302	323	284	269	306	326	287
2005	2	2	2	2	256	298	313	266	258	301	315	269
2006	3	1	2	2	261	290	324	296	264	292	326	299
2007	1	3	1	3	283	293	307	313	284	296	308	316
2008	1	2	2	1	274	301	310	273	275	302	312	273
2009	2	0	2	2	253	274	283	252	255	275	284	254
2010	R	2	2	2	250	271	282	256	252	273	284	257
2011	P	2	2	1	249	263	270		251	265	271	
<b>Total New Zealand</b>												
1999	8	8	8	7	786	912	999	925	794	920	1 007	932
2000	7	8	8	6	940	1 004	1 022	915	947	1 012	1 030	921
2001	6	8	7	7	879	954	1 033	927	885	962	1 040	934
2002	7	5	5	5	922	1 087	1 192	1 086	930	1 093	1 197	1 090
2003	4	4	4	4	1 062	1 103	1 113	1 006	1 066	1 107	1 117	1 010
2004	3	4	3	3	984	1 135	1 211	1 066	988	1 140	1 214	1 069
2005	3	3	3	3	966	1 122	1 149	989	969	1 125	1 152	992
2006	3	2	3	3	963	1 061	1 159	1 065	967	1 063	1 161	1 068
2007	2	4	2	3	1 007	1 095	1 194	1 110	1 009	1 099	1 196	1 113
2008	1	2	3	1	930	1 008	982	820	931	1 010	984	821
2009	2	1	2	2	792	859	961	934	794	860	963	937
2010	R	2	2	2	933	1 066	1 107	917	935	1 068	1 110	919
2011	P	2	2	2	872	988	994		874	991	996	

**Source**

Information and Analysis, Ministry of Agriculture and Forestry.

**Notes**

- 1 These series are available on the INFOSHARE database of Statistics New Zealand. [www.stats.govt.nz](http://www.stats.govt.nz)
- 2 Individual entries may not sum to totals shown due to rounding.
- 3 There has been a change in methodology for reporting indigenous sawn timber from September 2007.

**Symbol**

P Provisional.

R Revised.



**Table 2: Production of pulp<sup>1</sup>**

	Quarter ended				Year to
	31 March (air-dry tonnes)	30 June (air-dry tonnes)	30 September (air-dry tonnes)	31 December (air-dry tonnes)	30 September (air-dry tonnes)
<b>Mechanical pulp<sup>2</sup></b>					
1998	193 042	192 952	188 144	186 885	..
1999	187 726	183 329	193 553	195 635	<b>751 493</b>
2000	201 163	206 947	208 978	206 736	<b>812 722</b>
2001	204 625	207 473	182 641	200 347	<b>801 475</b>
2002	210 215	216 205	210 900	201 643	<b>837 667</b>
2003	199 667	196 974	193 009	205 744	<b>791 293</b>
2004	212 638	209 490	217 394	213 265	<b>845 267</b>
2005	219 331	208 135	187 384	177 348	<b>828 115</b>
2006	184 743	195 472	186 262	178 255	<b>743 825</b>
2007	184 007	189 106	188 907	186 020	<b>740 276</b>
2008	181 255	175 804	201 898	183 724	<b>744 976</b>
2009	196 488	197 496	182 300	191 102	<b>760 008</b>
2010	<sup>R</sup> 182 166	177 419	181 367	189 842	<b>732 054</b>
2011	<sup>P</sup> 181 834	183 742	183 434		<b>738 852</b>
<b>Chemical pulp<sup>3</sup></b>					
1998	173 231	157 585	151 806	173 888	..
1999	161 753	172 561	186 140	186 147	<b>694 341</b>
2000	209 037	195 122	191 072	185 982	<b>781 379</b>
2001	172 815	178 752	172 567	181 878	<b>710 116</b>
2002	189 857	190 980	165 192	165 332	<b>727 907</b>
2003	162 683	86 936	196 595	177 223	<b>611 546</b>
2004	193 537	176 264	176 698	197 172	<b>723 722</b>
2005	177 175	183 312	184 054	203 227	<b>741 714</b>
2006	172 206	185 398	191 372	212 363	<b>752 203</b>
2007	195 863	200 991	198 975	205 743	<b>808 192</b>
2008	195 470	182 027	197 891	191 253	<b>781 131</b>
2009	181 891	183 777	195 046	207 107	<b>751 967</b>
2010	<sup>R</sup> 198 302	213 805	228 509	232 665	<b>847 722</b>
2011	<sup>P</sup> 184 911	196 345	210 732		<b>824 654</b>
<b>Total pulp<sup>4</sup></b>					
1998	366 273	350 537	339 950	360 773	..
1999	349 479	355 890	379 693	381 782	<b>1 445 834</b>
2000	410 200	402 069	400 050	392 718	<b>1 594 101</b>
2001	377 440	386 225	355 207	382 225	<b>1 511 591</b>
2002	400 072	407 185	376 092	366 975	<b>1 565 574</b>
2003	362 350	283 910	389 604	382 967	<b>1 402 839</b>
2004	406 175	385 754	394 092	410 437	<b>1 568 989</b>
2005	396 506	391 447	371 438	380 575	<b>1 569 828</b>
2006	356 950	380 870	377 633	390 618	<b>1 496 027</b>
2007	379 870	390 098	387 882	391 763	<b>1 548 467</b>
2008	376 724	357 830	399 790	374 976	<b>1 526 107</b>
2009	378 380	381 274	377 346	398 208	<b>1 511 976</b>
2010	<sup>R</sup> 380 468	391 224	409 876	422 508	<b>1 579 776</b>
2011	<sup>P</sup> 366 745	380 087	394 166		<b>1 563 506</b>

**Source**

Information and Analysis, Ministry of Agriculture and Forestry.

**Notes**

- 1 Individual entries may not sum to totals shown due to rounding.
- 2 Mechanical pulp includes thermo and chemi-thermo mechanical pulp.
- 3 Chemical pulp includes semi-chemical pulp.
- 4 Total pulp includes both captive and market pulp.

**Symbol**

P Provisional.

R Revised.

**Table 3: Production of paper and paperboard<sup>1</sup>**

	Quarter ended				Year to
	31 March (tonnes)	30 June (tonnes)	30 September (tonnes)	31 December (tonnes)	30 September (tonnes)
<b>Newsprint</b>					
1998	97 861	96 972	96 503	98 505	..
1999	91 392	87 377	89 009	93 113	<b>366 283</b>
2000	91 124	98 494	96 902	91 610	<b>379 633</b>
2001	93 608	88 250	77 320	83 230	<b>350 788</b>
2002	85 258	89 549	90 853	85 925	<b>348 890</b>
2003	89 242	89 920	90 411	92 557	<b>355 498</b>
2004	95 533	93 853	95 287	95 240	<b>377 230</b>
2005	95 248	90 890	94 681	97 362	<b>376 059</b>
2006	84 131	88 911	64 874	69 483	<b>335 278</b>
2007	68 747	73 366	75 804	66 533	<b>287 401</b>
2008	69 951	68 536	75 388	74 172	<b>280 408</b>
2009	73 200	81 055	72 131	79 253	<b>300 558</b>
2010	<sup>R</sup> 73 350	73 165	72 617	78 690	<b>298 385</b>
2011	<sup>P</sup> 72 156	73 707	76 374		<b>300 927</b>
<b>All other paper and paperboard<sup>2</sup></b>					
1998	118 317	118 657	99 127	108 813	..
1999	104 345	114 811	112 490	115 978	<b>440 460</b>
2000	125 910	127 147	114 017	131 815	<b>483 053</b>
2001	118 014	130 886	116 290	131 431	<b>497 005</b>
2002	134 062	126 527	126 818	130 748	<b>518 839</b>
2003	112 001	70 182	137 269	128 060	<b>450 200</b>
2004	141 490	123 616	129 587	142 657	<b>522 753</b>
2005	145 851	145 630	135 234	146 305	<b>569 372</b>
2006	146 227	149 981	142 066	151 949	<b>584 579</b>
2007	135 935	151 260	138 734	149 555	<b>577 878</b>
2008	145 880	150 846	145 118	142 853	<b>591 399</b>
2009	139 929	146 565	137 969	151 297	<b>567 316</b>
2010	<sup>R</sup> 155 557	165 028	152 455	158 548	<b>624 337</b>
2011	<sup>P</sup> 157 544	156 589	146 521		<b>619 202</b>
<b>Total paper and paperboard</b>					
1998	216 178	215 629	195 630	207 318	..
1999	195 737	202 188	201 499	209 091	<b>806 742</b>
2000	217 034	225 641	210 919	223 425	<b>862 686</b>
2001	211 622	219 136	193 610	214 661	<b>847 793</b>
2002	219 320	216 076	217 671	216 673	<b>867 728</b>
2003	201 243	160 102	227 680	220 617	<b>805 698</b>
2004	237 023	217 469	224 874	237 897	<b>899 983</b>
2005	241 099	236 520	229 915	243 667	<b>945 431</b>
2006	230 358	238 838	206 967	221 461	<b>919 830</b>
2007	204 681	224 626	214 538	216 087	<b>865 306</b>
2008	215 831	219 382	220 507	217 025	<b>871 807</b>
2009	213 129	227 620	210 100	230 551	<b>867 874</b>
2010	<sup>R</sup> 228 907	238 193	225 072	237 238	<b>922 722</b>
2011	<sup>P</sup> 229 700	230 296	222 895		<b>920 129</b>

**Source**

Information and Analysis, Ministry of Agriculture and Forestry.

**Notes**

1 Individual entries may not sum to totals shown due to rounding.

2 All other paper and paperboard includes printing and writing paper, other paper and paperboard.

**Symbol**

P Provisional.

R Revised.

**Table 4: Production of panel products<sup>1</sup>**

	Quarter ended				Year to 30 September (m <sup>3</sup> )
	31 March (m <sup>3</sup> )	30 June (m <sup>3</sup> )	30 September (m <sup>3</sup> )	31 December (m <sup>3</sup> )	
<b>Fibreboard - all types<sup>2</sup></b>					
2000	186 453	204 559	204 431	199 168	..
2001	193 335	198 349	213 838	213 958	<b>804 691</b>
2002	195 849	218 804	234 726	230 922	<b>863 336</b>
2003	198 665	226 166	221 096	222 612	<b>876 849</b>
2004	203 237	220 522	227 706	221 943	<b>874 077</b>
2005	175 492	220 022	236 053	229 472	<b>853 511</b>
2006	221 391	238 410	236 567	185 655	<b>925 839</b>
2007	176 124	195 976	198 515	193 708	<b>756 270</b>
2008	176 845	157 265	180 474	153 933	<b>708 292</b>
2009	152 982	145 718	180 942	172 453	<b>633 575</b>
2010	R 158 619	166 728	178 534	161 906	<b>676 335</b>
2011	P 157 067	183 876	188 744		<b>691 593</b>
<b>Veneer<sup>3</sup></b>					
2000	94 091	100 871	106 271	98 041	..
2001	96 407	116 114	123 394	110 835	<b>433 955</b>
2002	110 276	141 676	149 287	151 501	<b>512 075</b>
2003	159 136	160 656	162 554	155 210	<b>633 847</b>
2004	150 327	172 644	186 405	171 311	<b>664 586</b>
2005	163 941	184 445	179 031	144 113	<b>698 727</b>
2006	157 618	165 307	197 701	167 936	<b>664 739</b>
2007	157 368	139 096	143 739	121 566	<b>608 139</b>
2008	108 174	141 026	151 274	118 468	<b>522 040</b>
2009	77 020	92 727	114 403	120 454	<b>402 618</b>
2010	R 135 452	168 601	190 078	169 302	<b>614 585</b>
2011	P 159 623	187 322	187 679		<b>703 926</b>
<b>Plywood<sup>4</sup></b>					
2000	62 882	62 590	58 475	63 707	..
2001	58 930	64 809	69 671	65 750	<b>257 117</b>
2002	63 102	72 286	81 983	81 685	<b>283 121</b>
2003	85 701	81 647	90 120	86 247	<b>339 152</b>
2004	87 088	96 753	114 333	103 973	<b>384 421</b>
2005	93 577	109 551	110 701	91 146	<b>417 801</b>
2006	92 410	104 006	116 543	103 107	<b>404 106</b>
2007	98 137	114 695	118 083	96 678	<b>434 022</b>
2008	86 927	106 653	109 276	85 683	<b>399 534</b>
2009	64 052	56 615	66 176	68 647	<b>272 526</b>
2010	R 65 917	97 666	102 259	94 098	<b>334 490</b>
2011	P 82 322	102 500	103 252		<b>382 173</b>
<b>Particleboard<sup>5</sup></b>					
2000	50 266	55 564	56 551	49 966	..
2001	42 443	49 489	48 180	51 075	<b>190 078</b>
2002	49 603	54 818	51 149	49 080	<b>206 645</b>
2003	54 930	63 774	50 612	52 539	<b>218 396</b>
2004	63 453	55 480	62 744	62 121	<b>234 217</b>
2005	49 625	64 976	64 380	58 810	<b>241 102</b>
2006	50 039	59 298	67 094	65 392	<b>235 241</b>
2007	64 455	67 872	66 459	57 480	<b>264 178</b>
2008	53 498	59 758	59 127	54 107	<b>229 864</b>
2009	44 778	44 095	33 360	33 080	<b>176 340</b>
2010	R 32 440	37 869	37 418	34 317	<b>140 807</b>
2011	P 35 931	41 855	41 643		<b>153 747</b>

**Source**

Information and Analysis, Ministry of Agriculture and Forestry.

**Notes**

- Individual entries may not sum to totals shown due to rounding.
- Fibreboard includes hardboard, softboard and medium density fibreboard (mdf) from the December 1996 quarter. Prior to this, triboard and strandboard had been included in this category. The change has been made in line with HS export and import codes.
- Veneer production includes veneer intended for further production into plywood or laminated veneer lumber in New Zealand.
- Plywood production includes laminated veneer lumber production.
- Particleboard includes particleboard, triboard and strandboard from the December 1996 quarter. (See Note 3.)

**Symbol**

P Provisional.  
R Revised.

**Table 5: Estimated roundwood removals from New Zealand forests<sup>1</sup>**

(units: 000 cubic metres of roundwood)

	Removals from indigenous forests <sup>2</sup>						Total natural forest removals	Removals from planted production forests						Total planted production forest removals	Total removals for quarter ended	Total removals for year ended
	Saw logs	Peeler logs	Small logs	Pulp logs	Export chips	Export logs		Saw logs	Peeler logs	Small logs	Pulp logs	Export chips	Export logs			
31 Mar 2004	6	-	-	-	-	-	6	1 811	248	365	849	81	1 488	4 842	4 848	20 909
30 Jun 2004	8	1	-	-	-	-	9	2 077	291	369	799	31	1 340	4 906	4 915	20 122
30 Sep 2004	6	-	-	-	-	-	6	2 216	314	378	816	67	1 413	5 205	5 210	19 914
31 Dec 2004	5	-	-	-	-	-	5	1 951	288	428	850	36	1 278	4 832	4 837	19 810
31 Mar 2005	5	-	-	-	-	-	5	1 768	276	311	821	65	1 092	4 333	4 338	19 301
30 Jun 2005	6	-	-	-	-	-	6	2 029	311	368	811	80	1 293	4 892	4 898	19 284
30 Sep 2005	6	-	-	-	-	-	6	2 080	301	386	825	62	1 370	5 024	5 030	19 103
30 Dec 2005	6	-	-	-	-	-	6	1 790	243	371	859	53	1 439	4 754	4 760	19 026
31 Mar 2006	7	-	-	-	-	-	7	1 743	265	354	740	66	965	4 133	4 139	18 827
30 Jun 2006	5	-	-	-	-	-	5	1 920	288	385	819	49	1 425	4 884	4 889	18 818
30 Sep 2006	5	-	-	-	-	-	5	2 097	344	384	811	52	1 495	5 184	5 189	18 977
30 Dec 2006	5	-	-	-	-	-	5	1 928	292	326	838	65	1 692	5 140	5 145	19 363
31 Mar 2007	3	-	-	-	-	-	3	1 823	274	315	816	100	1 361	4 688	4 691	19 915
30 Jun 2007 <sup>R</sup>	7	-	-	-	-	-	7	1 982	327	331	881	61	1 701	5 282	5 289	20 315
30 Sep 2007 <sup>R</sup>	4	-	-	-	-	-	4	2 161	338	335	876	100	1 531	5 341	5 345	20 471
30 Dec 2007 <sup>R</sup>	6	-	-	-	-	-	6	2 010	286	322	885	103	1 384	4 988	4 994	20 320
31 Mar 2008 <sup>R</sup>	2	-	-	-	-	-	2	1 687	254	302	851	100	1 582	4 776	4 778	20 406
30 Jun 2008 <sup>R</sup>	4	-	-	-	-	-	4	1 824	313	290	739	86	1 523	4 776	4 780	19 897
30 Sep 2008 <sup>R</sup>	6	-	-	-	-	-	6	1 777	336	322	825	122	1 800	5 182	5 188	19 739
31 Dec 2008 <sup>R</sup>	2	-	-	-	-	-	2	1 485	263	289	774	63	1 778	4 652	4 653	19 399
31 Mar 2009 <sup>R</sup>	5	-	-	-	-	-	5	1 433	171	284	781	22	1 547	4 238	4 242	18 863
30 Jun 2009 <sup>R</sup>	1	-	-	-	-	-	1	1 556	157	275	858	51	2 447	5 344	5 346	19 429
30 Sep 2009 <sup>R</sup>	4	-	-	-	-	-	4	1 740	194	315	849	68	2 586	5 752	5 756	19 998
31 Dec 2009 <sup>R</sup>	4	-	-	-	-	-	4	1 691	204	302	896	67	2 241	5 401	5 405	20 749
31 Mar 2010 <sup>R</sup>	5	-	-	-	-	-	5	1 688	229	289	856	90	2 293	5 446	5 451	21 958
30 Jun 2010 <sup>R</sup>	5	-	-	-	-	-	4	1 929	284	253	872	85	2 792	6 214	6 218	22 830
30 Sep 2010 <sup>R</sup>	5	-	-	-	-	-	4	2 003	320	278	974	74	2 717	6 366	6 370	23 444
31 Dec 2010 <sup>R</sup>	4	-	-	-	-	-	4	1 660	285	247	914	99	3 084	6 288	6 292	24 331
31 Mar 2011 <sup>R</sup>	4	-	-	-	-	-	3	1 579	268	249	922	60	3 086	6 165	6 168	25 048
30 Jun 2011 <sup>P</sup>	4	-	-	-	-	-	4	1 789	315	320	926	132	3 397	6 879	6 883	25 713
30 Sep 2011 <sup>P</sup>	3	-	-	-	-	-	3	1 800	316	326	960	111	3 248	6 761	6 764	26 107

**Source**

Information and Analysis, Ministry of Agriculture and Forestry.

**Note**

- Individual entries may not sum to totals shown due to rounding.
- There has been a change in methodology for reporting indigenous sawn timber from September 2007.

**Symbol**

- P Provisional.  
R Revised.

**Table 6: Log exports by country of destination by quantity and value<sup>1,2</sup>**

Country of destination	Quarter ended								Year ended	
	31 March 2009		30 June 2009		30 September 2009		31 December 2009		31 December 2009	
	Quantity (m3(r))	Value (NZ\$ 000)	Quantity (m3(r))	Value (NZ\$ 000)	Quantity (m3(r))	Value (NZ\$ 000)	Quantity (m3(r))	Value (NZ\$ 000)	Quantity (m3(r))	Value (NZ\$ 000)
Australia	-	-	341	69	3	6	-	-	344	75
China	835 426	95 178	1 471 566	154 477	1 356 035	151 617	1 184 747	130 575	4 847 774	531 848
India	102 414	11 250	230 527	21 321	292 298	31 804	187 037	19 008	812 275	83 383
Japan	162 146	18 935	66 207	6 906	156 903	14 515	177 062	19 998	562 318	60 355
Korea	428 636	46 357	640 587	83 328	724 400	66 190	637 088	61 071	2 430 712	256 946
Pacific Islands <sup>3</sup>	757	260	617	267	432	265	488	233	2 294	1 024
Philippines	-	-	-	-	77	12	76	12	153	23
Taiwan	9 956	1 382	19 063	2 060	21 711	2 186	17 222	2 107	67 952	7 735
Thailand	180	42	2 253	215	5 297	481	5 763	538	13 493	1 275
United Arab Emirates	1 067	147	9 192	837	21 548	2 097	23 016	2 317	54 823	5 397
Vietnam	5 566	823	5 866	704	3 952	534	2 872	357	18 255	2 418
Other Countries <sup>4</sup>	465	105	1 130	221	3 497	439	5 291	1 186	10 383	1 952
<b>Total</b>	<b>1 546 613</b>	<b>174 479</b>	<b>2 447 349</b>	<b>270 405</b>	<b>2 586 153</b>	<b>270 147</b>	<b>2 240 661</b>	<b>237 401</b>	<b>8 820 776</b>	<b>952 432</b>

Country of destination	Quarter ended								Year ended	
	31 March 2010		30 June 2010		30 September 2010		31 December 2010		31 December 2010	
	Quantity (m3(r))	Value (NZ\$ 000)	Quantity (m3(r))	Value (NZ\$ 000)	Quantity (m3(r))	Value (NZ\$ 000)	Quantity (m3(r))	Value (NZ\$ 000)	Quantity (m3(r))	Value (NZ\$ 000)
Australia	-	-	-	-	2	6	-	-	2	6
China	1 338 261	177 623	1 500 662	193 696	1 640 148	179 732	1 947 051	254 268	6 426 122	805 319
India	169 703	21 552	375 485	49 578	289 471	33 775	332 406	41 382	1 167 064	146 286
Japan	187 009	25 731	193 040	26 020	158 202	17 827	198 661	24 075	736 912	93 652
Korea	573 286	69 562	677 320	84 554	582 721	62 033	566 553	68 709	2 399 880	284 859
Pacific Islands <sup>3</sup>	532	251	579	255	438	211	805	402	2 355	1 119
Philippines	103	16	80	12	92	12	-	-	275	41
Taiwan	14 524	2 166	23 912	3 584	13 697	1 909	20 320	2 715	72 453	10 374
Thailand	4 593	496	4 070	501	10 643	1 349	5 440	624	24 746	2 969
United Arab Emirates	-	-	12 850	1 726	16 200	1 736	7 315	715	36 365	4 178
Vietnam	3 113	497	2 452	369	4 653	837	1 910	388	12 129	2 092
Other Countries <sup>4</sup>	2 095	339	1 590	385	795	206	3 650	522	8 130	1 452
<b>Total</b>	<b>2 293 219</b>	<b>298 233</b>	<b>2 792 040</b>	<b>360 681</b>	<b>2 717 065</b>	<b>299 632</b>	<b>3 084 111</b>	<b>393 800</b>	<b>10 886 434</b>	<b>1 352 346</b>

Country of destination	Quarter ended								Year ended	
	31 March 2011		30 June 2011		30 September 2011 <sup>P</sup>		31 December 2011		30 September 2011 <sup>P</sup>	
	Quantity (m3(r))	Value (NZ\$ 000)	Quantity (m3(r))	Value (NZ\$ 000)	Quantity (m3(r))	Value (NZ\$ 000)	Quantity (m3(r))	Value (NZ\$ 000)	Quantity (m3(r))	Value (NZ\$ 000)
Australia	-	-	-	-	21	9	-	-	21	9
China	1 930 377	280 394	2 022 622	289 178	2 175 015	253 704	-	-	8 075 065	1 077 544
India	429 428	61 630	431 763	58 161	285 155	32 611	-	-	1 478 752	193 783
Japan	154 587	22 043	189 786	27 311	182 167	22 218	-	-	725 201	95 646
Korea	536 709	73 532	723 750	102 573	560 531	62 381	-	-	2 387 543	307 196
Pacific Islands <sup>3</sup>	524	246	495	220	511	260	-	-	2 335	1 129
Philippines	-	-	-	-	-	-	-	-	-	-
Taiwan	24 920	4 416	20 617	3 778	15 274	1 967	-	-	81 132	12 875
Thailand	7 381	925	5 045	639	7 830	979	-	-	25 696	3 168
United Arab Emirates	-	-	-	-	-	-	-	-	7 315	715
Vietnam	1 996	424	2 091	443	3 229	544	-	-	9 226	1 800
Other Countries <sup>4</sup>	421	202	785	143	18 240	2 115	-	-	23 096	2 983
<b>Total</b>	<b>3 086 343</b>	<b>443 813</b>	<b>3 396 955</b>	<b>482 446</b>	<b>3 247 974</b>	<b>376 789</b>	-	-	<b>12 815 382</b>	<b>1 696 847</b>

**Source**

Statistics New Zealand. Compiled by Information and Analysis, Ministry of Agriculture and Forestry.

**Notes**

- 1 Logs are those items in HS item codes 4403. Logs include posts and poles. Values are NZ\$ free on board (f.o.b.). Quantity of logs is expressed in cubic metres of roundwood (m<sup>3</sup> (r)).
- 2 Individual entries may not sum to totals shown due to rounding.
- 3 Comprises Melanesia, Micronesia and Polynesia (excluding Hawaii) and Norfolk Island.
- 4 Other countries are all other countries to which New Zealand exported logs.

**Symbol**

P Provisional.

**Table 7: Hardwood chip exports by country of destination by quantity and value<sup>1, 2, 3</sup>**

Country of destination	Quarter ended						Year ended			
	31 March 2007		30 June 2007		30 September 2007		31 December 2007		31 December 2007	
	Quantity (BDU)	Value (NZ\$ 000)	Quantity (BDU)	Value (NZ\$ 000)	Quantity (BDU)	Value (NZ\$ 000)	Quantity (BDU)	Value (NZ\$ 000)	Quantity (BDU)	Value (NZ\$ 000)
Australia	2	7	-	-	10	8	-	-	12	14
Japan	14 225	2 890	12 254	2 493	15 802	1 754	16 927	1 736	59 208	8 873
Norfolk Island	-	-	-	-	-	-	-	-	-	-
<b>Total</b>	<b>14 227</b>	<b>2 897</b>	<b>12 254</b>	<b>2 493</b>	<b>15 812</b>	<b>1 762</b>	<b>16 927</b>	<b>1 736</b>	<b>59 220</b>	<b>8 888</b>

Country of destination	Quarter ended						Year ended			
	31 March 2008		30 June 2008		30 September 2008		31 December 2008		31 December 2008	
	Quantity (BDU)	Value (NZ\$ 000)	Quantity (BDU)	Value (NZ\$ 000)	Quantity (BDU)	Value (NZ\$ 000)	Quantity (BDU)	Value (NZ\$ 000)	Quantity (BDU)	Value (NZ\$ 000)
Australia	-	-	-	-	55	80	-	-	55	80
Japan	19 561	4 168	18 450	4 316	23 005	6 884	6 452	2 221	67 468	17 590
Norfolk Island	-	-	1	-	1	-	-	-	2	1
Other countries <sup>4</sup>	-	-	-	-	-	-	-	-	-	-
<b>Total</b>	<b>19 561</b>	<b>4 168</b>	<b>18 451</b>	<b>4 316</b>	<b>23 061</b>	<b>6 964</b>	<b>6 452</b>	<b>2 221</b>	<b>67 525</b>	<b>17 670</b>

Country of destination	Quarter ended						Year ended			
	31 March 2009		30 June 2009		30 September 2009		31 December 2009		31 December 2009	
	Quantity (BDU)	Value (NZ\$ 000)	Quantity (BDU)	Value (NZ\$ 000)	Quantity (BDU)	Value (NZ\$ 000)	Quantity (BDU)	Value (NZ\$ 000)	Quantity (BDU)	Value (NZ\$ 000)
Australia	10	6	2	3	20	7	-	-	32	16
Japan	-	-	11 685	3 304	16 298	3 638	10 973	2 698	38 956	9 640
Norfolk Island	-	-	-	-	-	-	-	-	1	1
Other countries <sup>4</sup>	-	-	1	1	20	12	-	-	20	12
<b>Total</b>	<b>10</b>	<b>6</b>	<b>11 688</b>	<b>3 308</b>	<b>16 338</b>	<b>3 657</b>	<b>10 973</b>	<b>2 698</b>	<b>39 009</b>	<b>9 668</b>

Country of destination	Quarter ended						Year ended			
	31 March 2010		30 June 2010		30 September 2010		31 December 2010		31 December 2010	
	Quantity (BDU)	Value (NZ\$ 000)	Quantity (BDU)	Value (NZ\$ 000)	Quantity (BDU)	Value (NZ\$ 000)	Quantity (BDU)	Value (NZ\$ 000)	Quantity (BDU)	Value (NZ\$ 000)
Australia	2	-	-	-	52	18	-	-	54	19
Japan	13 897	3 679	17 253	4 800	11 111	3 331	30 117	7 331	72 378	19 141
Norfolk Island	-	-	-	-	-	-	-	-	-	-
Other countries <sup>4</sup>	-	-	-	-	-	-	-	-	-	-
<b>Total</b>	<b>13 899</b>	<b>3 680</b>	<b>17 253</b>	<b>4 800</b>	<b>11 163</b>	<b>3 349</b>	<b>30 117</b>	<b>7 331</b>	<b>72 432</b>	<b>19 160</b>

Country of destination	Quarter ended						Year ended			
	31 March 2011		30 June 2011		30 September 2011 <sup>P</sup>		31 December 2011		30 September 2011 <sup>P</sup>	
	Quantity (BDU)	Value (NZ\$ 000)	Quantity (BDU)	Value (NZ\$ 000)	Quantity (BDU)	Value (NZ\$ 000)	Quantity (BDU)	Value (NZ\$ 000)	Quantity (BDU)	Value (NZ\$ 000)
Australia	-	-	-	-	1	3	-	-	1	3
Japan	15 953	3 740	17 340	4 057	31 556	7 176	-	-	94 966	22 304
Norfolk Island	-	-	-	-	-	-	-	-	-	-
Other countries <sup>4</sup>	-	-	-	-	1	-	-	-	1	-
<b>Total</b>	<b>15 953</b>	<b>3 740</b>	<b>17 340</b>	<b>4 057</b>	<b>31 558</b>	<b>7 180</b>	<b>-</b>	<b>-</b>	<b>94 968</b>	<b>22 308</b>

**Source**

Statistics New Zealand. Compiled by Information and Analysis, Ministry of Agriculture and Forestry.

**Notes**

- 1 Hardwood chips are those items in HS item codes 4401.22. Values are NZ\$ free on board (f.o.b.). Because of item misclassification, exports for some quarters have been adjusted and may not necessarily agree with those published by Statistics New Zealand.
- 2 Individual entries may not sum to totals shown due to rounding.
- 3 One BDU (bone dry unit) of hardwood chips in roundwood equivalent is 2.25 cubic metres and weighs 1090 kilograms when oven dry.
- 4 Other countries are all other countries to which New Zealand exported hardwood chips.

**Symbol**

P Provisional.

**Table 8: Softwood chip exports by country of destination by quantity and value<sup>1,2,3</sup>**

Country of destination	Quarter ended								Year ended	
	31 March 2008		30 June 2008		30 September 2008		31 December 2008		31 December 2008	
	Quantity (BDU)	Value (NZ\$ 000)	Quantity (BDU)	Value (NZ\$ 000)	Quantity (BDU)	Value (NZ\$ 000)	Quantity (BDU)	Value (NZ\$ 000)	Quantity (BDU)	Value (NZ\$ 000)
Australia	1	-	-	-	-	-	-	-	1	-
Japan	81 377	15 320	68 792	13 637	100 351	21 543	56 308	14 838	306 828	65 338
Korea	-	-	-	-	-	-	-	-	-	-
Singapore	180	83	270	128	124	48	145	104	719	364
Other <sup>4</sup>	-	-	-	-	333	142	-	-	333	142
<b>Total</b>	<b>81 558</b>	<b>15 403</b>	<b>69 062</b>	<b>13 765</b>	<b>100 808</b>	<b>21 734</b>	<b>56 453</b>	<b>14 943</b>	<b>307 881</b>	<b>65 844</b>

Country of destination	Quarter ended								Year ended	
	31 March 2009		30 June 2009		30 September 2009		31 December 2009		31 December 2009	
	Quantity (BDU)	Value (NZ\$ 000)	Quantity (BDU)	Value (NZ\$ 000)	Quantity (BDU)	Value (NZ\$ 000)	Quantity (BDU)	Value (NZ\$ 000)	Quantity (BDU)	Value (NZ\$ 000)
Australia	-	-	-	-	2	8	-	-	2	8
Japan	21 648	5 988	40 491	9 087	36 050	7 953	56 420	9 331	154 609	32 359
Korea	-	-	-	-	-	-	-	-	-	-
Singapore	93	136	20	28	53	78	80	115	246	357
Other <sup>4</sup>	-	-	-	-	16 500	3 246	-	-	16 500	3 246
<b>Total</b>	<b>21 741</b>	<b>6 124</b>	<b>40 511</b>	<b>9 115</b>	<b>52 605</b>	<b>11 286</b>	<b>56 500</b>	<b>9 446</b>	<b>171 357</b>	<b>35 971</b>

Country of destination	Quarter ended								Year ended	
	31 March 2010		30 June 2010		30 September 2010		31 December 2010		31 December 2010	
	Quantity (BDU)	Value (NZ\$ 000)	Quantity (BDU)	Value (NZ\$ 000)	Quantity (BDU)	Value (NZ\$ 000)	Quantity (BDU)	Value (NZ\$ 000)	Quantity (BDU)	Value (NZ\$ 000)
Australia	-	-	-	-	-	-	-	-	-	-
Japan	57 970	10 890	68 450	13 892	63 395	13 166	70 457	14 135	260 272	52 083
Korea	-	-	-	-	-	-	-	-	-	-
Singapore	40	54	132	173	65	74	40	54	277	356
Other <sup>4</sup>	18 600	3 489	-	-	-	-	6	7	18 606	3 497
<b>Total</b>	<b>76 610</b>	<b>14 434</b>	<b>68 582</b>	<b>14 065</b>	<b>63 460</b>	<b>13 240</b>	<b>70 503</b>	<b>14 197</b>	<b>279 155</b>	<b>55 936</b>

Country of destination	Quarter ended								Year ended	
	31 March 2011		30 June 2011		30 September 2011 <sup>P</sup>		31 December 2011		30 September 2011 <sup>P</sup>	
	Quantity (BDU)	Value (NZ\$ 000)	Quantity (BDU)	Value (NZ\$ 000)	Quantity (BDU)	Value (NZ\$ 000)	Quantity (BDU)	Value (NZ\$ 000)	Quantity (BDU)	Value (NZ\$ 000)
Australia	-	-	-	-	-	-	-	-	-	-
Japan	44 980	8 704	115 757	22 469	81 764	15 473	-	-	312 958	60 781
Korea	-	-	-	-	-	-	-	-	-	-
Singapore	54	69	52	62	61	67	-	-	207	252
Other <sup>4</sup>	-	-	1	1	12	8	-	-	19	16
<b>Total</b>	<b>45 034</b>	<b>8 773</b>	<b>115 810</b>	<b>22 532</b>	<b>81 837</b>	<b>15 547</b>	<b>-</b>	<b>-</b>	<b>313 184</b>	<b>61 050</b>

**Source**

Statistics New Zealand. Compiled by Information and Analysis, Ministry of Agriculture and Forestry.

**Notes**

- 1 Softwood chips are those items in HS item codes 4401.21. Values are NZ\$ free on board (f.o.b.). Because of item misclassification exports for some quarters have been adjusted and may not necessarily agree with those published by Statistics New Zealand.
- 2 Individual entries may not sum to totals shown due to rounding.
- 3 One BDU (bone dry unit) of softwood chips in roundwood equivalent is 2.63 cubic metres and weighs 1090 kilograms when oven dry.
- 4 Other countries are all other countries to which New Zealand exported softwood chips.

**Symbol**

P Provisional.

**Table 9: Sawn timber exports by country of destination by quantity and value<sup>1,2</sup>**

Country of destination	Quarter ended								Year ended	
	31 March 2009		30 June 2009		30 September 2009		31 December 2009		31 December 2009	
	Quantity (m <sup>3</sup> )	Value (NZ\$ 000)	Quantity (m <sup>3</sup> )	Value (NZ\$ 000)	Quantity (m <sup>3</sup> )	Value (NZ\$ 000)	Quantity (m <sup>3</sup> )	Value (NZ\$ 000)	Quantity (m <sup>3</sup> )	Value (NZ\$ 000)
Australia	39 556	30 526	48 687	36 181	58 049	42 175	60 761	44 077	207 054	152 958
China	70 689	29 525	140 306	40 618	111 568	31 961	106 564	30 389	429 127	132 492
French Polynesia	1 401	1 013	2 966	1 633	2 124	1 137	1 629	938	8 121	4 721
Indonesia	22 388	7 406	22 659	6 372	19 174	5 027	17 908	4 653	82 129	23 458
Japan	26 116	8 499	14 903	3 831	21 459	4 482	34 180	7 992	96 657	24 805
Korea	15 255	3 428	21 873	4 289	22 395	4 177	24 758	4 773	84 280	16 668
Philippines	3 289	2 000	3 138	1 867	5 168	3 461	5 059	2 905	16 654	10 233
Taiwan	10 786	3 705	22 198	6 049	22 606	5 603	23 854	6 400	79 443	21 756
Thailand	8 237	2 439	17 794	4 110	27 125	6 160	21 074	4 222	74 230	16 931
USA	32 699	31 932	47 282	39 235	43 934	38 224	58 582	44 048	182 497	153 438
Vietnam	40 545	11 765	69 890	16 408	72 559	16 719	64 159	15 391	247 153	60 283
Other countries <sup>3</sup>	48 835	17 862	88 869	25 714	112 701	32 496	101 580	32 994	351 984	109 063
<b>Total</b>	<b>319 796</b>	<b>150 098</b>	<b>500 565</b>	<b>186 305</b>	<b>518 862</b>	<b>191 621</b>	<b>520 108</b>	<b>198 781</b>	<b>1 859 330</b>	<b>726 806</b>

Country of destination	Quarter ended								Year ended	
	31 March 2010		30 June 2010		30 September 2010		31 December 2010		31 December 2010	
	Quantity (m <sup>3</sup> )	Value (NZ\$ 000)	Quantity (m <sup>3</sup> )	Value (NZ\$ 000)	Quantity (m <sup>3</sup> )	Value (NZ\$ 000)	Quantity (m <sup>3</sup> )	Value (NZ\$ 000)	Quantity (m <sup>3</sup> )	Value (NZ\$ 000)
Australia	49 923	40 170	62 966	51 606	54 278	41 512	57 622	44 505	224 790	177 793
China	79 426	25 282	111 839	41 434	101 170	41 160	192 536	41 216	484 971	149 092
French Polynesia	1 254	655	1 487	847	2 718	994	1 284	773	6 743	3 269
Indonesia	16 317	4 755	24 837	7 953	22 403	7 302	18 443	5 431	82 000	25 441
Japan	30 850	6 924	38 164	11 547	32 848	10 137	29 428	7 949	131 290	36 557
Korea	24 245	5 227	28 120	6 608	27 504	6 715	35 960	8 277	115 829	26 827
Philippines	5 271	3 020	3 829	2 238	7 488	4 590	7 080	3 993	23 669	13 840
Taiwan	15 099	4 331	23 043	7 865	22 803	7 893	34 405	10 057	95 349	30 147
Thailand	16 131	3 805	27 746	7 343	28 688	8 807	32 485	8 164	105 051	28 119
USA	42 204	32 838	59 373	47 583	43 312	37 617	45 139	33 989	190 028	152 027
Vietnam	43 948	12 012	56 762	18 279	70 001	22 177	44 200	12 307	214 912	64 776
Other countries <sup>3</sup>	51 649	22 306	88 452	34 237	108 325	42 723	100 711	35 141	349 137	134 407
<b>Total</b>	<b>376 317</b>	<b>161 325</b>	<b>526 617</b>	<b>237 540</b>	<b>521 540</b>	<b>231 628</b>	<b>599 292</b>	<b>211 801</b>	<b>2 023 766</b>	<b>842 294</b>

Country of destination	Quarter ended								Year ended	
	31 March 2011		30 June 2011		30 September 2011 <sup>P</sup>		31 December 2011		30 September 2011 <sup>P</sup>	
	Quantity (m <sup>3</sup> )	Value (NZ\$ 000)	Quantity (m <sup>3</sup> )	Value (NZ\$ 000)	Quantity (m <sup>3</sup> )	Value (NZ\$ 000)	Quantity (m <sup>3</sup> )	Value (NZ\$ 000)	Quantity (m <sup>3</sup> )	Value (NZ\$ 000)
Australia	49 544	38 578	52 924	40 809	60 269	43 730			220 360	167 621
China	84 659	28 812	90 762	29 781	111 804	33 952			479 761	133 761
French Polynesia	1 406	726	2 066	1 189	853	446			5 609	3 133
Indonesia	18 931	5 543	25 556	7 251	23 925	6 582			86 854	24 806
Japan	38 111	9 306	31 287	8 673	40 881	11 066			139 707	36 994
Korea	27 604	6 521	41 336	9 884	39 180	9 646			144 080	34 328
Philippines	6 569	3 305	7 083	3 816	5 986	3 266			26 717	14 380
Taiwan	26 032	7 724	34 718	10 657	29 038	8 570			124 192	37 009
Thailand	23 559	5 554	32 189	7 818	40 237	9 490			128 470	31 027
USA	38 413	29 994	44 404	33 247	41 103	30 018			169 059	127 249
Vietnam	31 532	8 385	55 255	15 356	55 921	14 760			186 909	50 809
Other countries <sup>3</sup>	59 206	20 274	66 562	25 228	88 625	28 655			315 103	109 299
<b>Total</b>	<b>405 564</b>	<b>164 722</b>	<b>484 142</b>	<b>193 710</b>	<b>537 822</b>	<b>200 182</b>			<b>2 026 820</b>	<b>770 415</b>

**Source**

Statistics New Zealand. Compiled by Information and Analysis, Ministry of Agriculture and Forestry.

**Notes**

- 1 Sawn timber is those items in HS codes 4406 and 4407. Values are NZ\$ free on board (f.o.b.).
- 2 Individual entries may not sum to totals shown due to rounding.
- 3 Other countries are all other countries to which New Zealand exported sawn timber.

**Symbol**

P Provisional.



**Table 10: Mechanical wood pulp exports by country of destination by quantity and value<sup>1,2</sup>**

Country of destination	Quarter ended								Year ended	
	31 March 2007		30 June 2007		30 September 2007		31 December 2007		31 December 2007	
	Quantity (tonnes)	Value (NZ\$ 000)	Quantity (tonnes)	Value (NZ\$ 000)	Quantity (tonnes)	Value (NZ\$ 000)	Quantity (tonnes)	Value (NZ\$ 000)	Quantity (tonnes)	Value (NZ\$ 000)
China	-	-	-	-	-	-	-	-	-	-
Indonesia	-	-	-	-	55	32	-	-	55	32
Japan	47 167	18 831	41 410	16 255	65 997	27 342	81 354	32 513	235 928	94 941
Other countries <sup>3</sup>	78	44	423	201	55	32	21	14	577	291
<b>Total</b>	<b>47 245</b>	<b>18 875</b>	<b>41 833</b>	<b>16 455</b>	<b>66 052</b>	<b>27 374</b>	<b>81 375</b>	<b>32 527</b>	<b>236 505</b>	<b>95 231</b>

Country of destination	Quarter ended								Year ended	
	31 March 2008		30 June 2008		30 September 2008		31 December 2008		31 December 2008	
	Quantity (tonnes)	Value (NZ\$ 000)	Quantity (tonnes)	Value (NZ\$ 000)	Quantity (tonnes)	Value (NZ\$ 000)	Quantity (tonnes)	Value (NZ\$ 000)	Quantity (tonnes)	Value (NZ\$ 000)
China	-	-	2 952	1 690	-	-	-	-	2 952	1 690
Indonesia	-	-	-	-	-	-	-	-	-	-
Japan	53 577	20 847	41 695	16 656	40 310	16 307	80 666	32 725	216 248	86 535
Other countries <sup>3</sup>	265	141	321	172	-	-	77	49	663	361
<b>Total</b>	<b>53 842</b>	<b>20 988</b>	<b>44 968</b>	<b>18 518</b>	<b>40 310</b>	<b>16 307</b>	<b>80 743</b>	<b>32 774</b>	<b>219 863</b>	<b>88 586</b>

Country of destination	Quarter ended								Year ended	
	31 March 2009		30 June 2009		30 September 2009		31 December 2009		31 December 2009	
	Quantity (tonnes)	Value (NZ\$000)	Quantity (tonnes)	Value (NZ\$000)	Quantity (tonnes)	Value (NZ\$000)	Quantity (tonnes)	Value (NZ\$000)	Quantity (tonnes)	Value (NZ\$000)
China	-	-	-	-	-	-	-	-	-	-
Indonesia	-	-	-	-	-	-	-	-	-	-
Japan	67 064	28 233	37 237	15 377	85 948	39 841	60 915	28 983	251 164	112 434
Other countries <sup>3</sup>	76	49	57	35	19	12	58	36	211	133
<b>Total</b>	<b>67 140</b>	<b>28 282</b>	<b>37 294</b>	<b>15 413</b>	<b>85 967</b>	<b>39 853</b>	<b>60 973</b>	<b>29 019</b>	<b>251 375</b>	<b>112 567</b>

Country of destination	Quarter ended								Year ended	
	31 March 2010		30 June 2010		30 September 2010		31 December 2010		31 December 2010	
	Quantity (tonnes)	Value (NZ\$000)	Quantity (tonnes)	Value (NZ\$000)	Quantity (tonnes)	Value (NZ\$000)	Quantity (tonnes)	Value (NZ\$000)	Quantity (tonnes)	Value (NZ\$000)
China	-	-	-	-	-	-	-	-	-	-
Indonesia	-	-	-	-	-	-	-	-	-	-
Japan	43 673	20 589	51 621	24 535	62 837	30 054	36 550	17 344	194 681	92 521
Other countries <sup>3</sup>	166	125	57	37	38	26	38	27	299	214
<b>Total</b>	<b>43 839</b>	<b>20 713</b>	<b>51 678</b>	<b>24 571</b>	<b>62 875</b>	<b>30 080</b>	<b>36 588</b>	<b>17 371</b>	<b>194 980</b>	<b>92 735</b>

Country of destination	Quarter ended								Year ended	
	31 March 2011		30 June 2011		30 September 2011 <sup>P</sup>		31 December 2011		30 September 2011 <sup>P</sup>	
	Quantity (tonnes)	Value (NZ\$000)	Quantity (tonnes)	Value (NZ\$000)	Quantity (tonnes)	Value (NZ\$000)	Quantity (tonnes)	Value (NZ\$000)	Quantity (tonnes)	Value (NZ\$000)
China	-	-	-	-	-	-	-	-	-	-
Indonesia	-	-	-	-	-	-	-	-	-	-
Japan	57 049	27 787	17 129	7 587	57 164	26 645	-	-	167 892	79 363
Other countries <sup>3</sup>	38	25	38	27	515	272	-	-	629	352
<b>Total</b>	<b>57 087</b>	<b>27 813</b>	<b>17 167</b>	<b>7 614</b>	<b>57 679</b>	<b>26 918</b>	-	-	<b>168 521</b>	<b>79 715</b>

**Source**

Statistics New Zealand. Compiled by Information and Analysis, Ministry of Agriculture and Forestry.

**Notes**

- 1 Mechanical pulp is those export items in HS item grouping 4701. Values are NZ\$ free on board (f.o.b).
- 2 Individual entries may not sum to shown totals due to rounding.
- 3 Other countries are all other countries to which New Zealand exported mechanical wood pulp.

**Symbol**

P Provisional.

**Table 11: Chemical wood pulp exports by country of destination by quantity and value<sup>1, 2</sup>**

Country of destination	Quarter ended								Year ended	
	31 March 2008		30 June 2008		30 September 2008		31 December 2008		31 December 2008	
	Quantity (tonnes)	Value (NZ\$ 000)	Quantity (tonnes)	Value (NZ\$ 000)	Quantity (tonnes)	Value (NZ\$ 000)	Quantity (tonnes)	Value (NZ\$ 000)	Quantity (tonnes)	Value (NZ\$ 000)
Australia	33 031	29 378	34 405	30 610	36 569	36 303	25 094	25 208	129 099	121 499
China	49 569	39 460	36 739	29 743	39 694	33 296	45 524	32 824	171 526	135 323
Indonesia	14 630	11 706	21 795	17 930	27 896	24 810	17 813	14 382	82 135	68 828
Korea	16 604	13 964	20 819	17 855	23 009	20 402	17 459	16 189	77 892	68 409
Malaysia	5 607	4 941	5 794	5 076	4 404	4 354	5 532	6 025	21 337	20 396
Taiwan	6 639	5 290	10 004	7 982	11 257	9 616	4 080	3 638	31 981	26 527
Other countries <sup>3</sup>	14 224	12 136	15 230	12 863	12 495	11 253	15 402	14 072	57 351	50 324
<b>Total</b>	<b>140 307</b>	<b>116 875</b>	<b>144 785</b>	<b>122 059</b>	<b>155 325</b>	<b>140 033</b>	<b>130 905</b>	<b>112 338</b>	<b>571 321</b>	<b>491 306</b>

Country of destination	Quarter ended								Year ended	
	31 March 2009		30 June 2009		30 September 2009		31 December 2009		31 December 2009	
	Quantity (tonnes)	Value (NZ\$000)	Quantity (tonnes)	Value (NZ\$000)	Quantity (tonnes)	Value (NZ\$000)	Quantity (tonnes)	Value (NZ\$000)	Quantity (tonnes)	Value (NZ\$000)
Australia	27 387	26 501	18 880	15 485	25 448	20 114	24 392	19 575	96 107	81 675
China	68 569	46 128	43 559	25 540	39 722	24 500	32 829	23 025	184 678	119 194
Indonesia	24 014	17 565	37 568	25 200	41 874	29 710	40 377	30 034	143 833	102 508
Korea	12 293	10 529	22 501	15 841	23 710	17 224	27 662	21 639	86 166	65 233
Malaysia	827	702	7 233	6 208	5 320	4 337	4 986	4 350	18 366	15 596
Taiwan	8 270	5 807	14 239	8 835	9 700	6 442	12 025	8 886	44 235	29 969
Other countries <sup>3</sup>	11 008	8 521	16 328	11 579	15 234	10 742	15 459	11 670	58 029	42 512
<b>Total</b>	<b>152 368</b>	<b>115 752</b>	<b>160 309</b>	<b>108 688</b>	<b>161 008</b>	<b>113 068</b>	<b>157 729</b>	<b>119 179</b>	<b>631 414</b>	<b>456 687</b>

Country of destination	Quarter ended								Year ended	
	31 March 2010		30 June 2010		30 September 2010		31 December 2010		31 December 2010	
	Quantity (tonnes)	Value (NZ\$000)	Quantity (tonnes)	Value (NZ\$000)	Quantity (tonnes)	Value (NZ\$000)	Quantity (tonnes)	Value (NZ\$000)	Quantity (tonnes)	Value (NZ\$000)
Australia	25 112	23 429	20 868	22 618	19 049	21 265	18 311	19 151	83 339	86 462
China	35 329	29 182	42 742	39 724	47 672	36 314	81 117	65 579	206 860	170 797
Indonesia	33 319	27 540	26 617	26 308	19 867	17 658	23 027	17 237	102 830	88 743
Korea	23 099	20 364	23 929	25 058	19 767	20 416	18 531	17 083	85 325	82 921
Malaysia	5 964	5 782	5 580	6 312	5 616	6 210	5 843	5 935	23 002	24 239
Taiwan	8 888	7 489	9 941	9 848	6 280	6 023	10 229	8 191	35 338	31 550
Other countries <sup>3</sup>	11 143	10 086	13 464	13 615	13 420	14 301	11 103	11 022	49 130	49 024
<b>Total</b>	<b>142 854</b>	<b>123 871</b>	<b>143 140</b>	<b>143 483</b>	<b>131 671</b>	<b>122 186</b>	<b>168 160</b>	<b>144 196</b>	<b>585 825</b>	<b>533 736</b>

Country of destination	Quarter ended								Year ended	
	31 March 2011		30 June 2011		30 September 2011 <sup>P</sup>		31 December 2011		30 September 2011 <sup>P</sup>	
	Quantity (tonnes)	Value (NZ\$000)	Quantity (tonnes)	Value (NZ\$000)	Quantity (tonnes)	Value (NZ\$000)	Quantity (tonnes)	Value (NZ\$000)	Quantity (tonnes)	Value (NZ\$000)
Australia	15 347	15 610	21 068	21 059	18 893	17 933			73 618	73 753
China	51 591	42 837	58 716	48 024	61 897	45 784			253 322	202 223
Indonesia	26 507	21 057	25 120	19 188	21 439	13 956			96 093	71 438
Korea	23 494	22 613	26 698	26 585	25 401	22 911			94 124	89 192
Malaysia	6 536	6 753	5 597	5 617	4 466	4 229			22 442	22 533
Taiwan	9 690	7 754	6 842	5 270	5 595	4 150			32 357	25 365
Other countries <sup>3</sup>	17 120	16 130	14 927	14 463	16 562	14 755			59 712	56 370
<b>Total</b>	<b>150 286</b>	<b>132 755</b>	<b>158 968</b>	<b>140 205</b>	<b>154 253</b>	<b>123 718</b>			<b>631 667</b>	<b>540 874</b>

**Source**

Statistics New Zealand. Compiled by Information and Analysis, Ministry of Agriculture and Forestry.

**Notes**

- 1 Chemical wood pulp is those export items in HS groupings 4702, 4703, 4704 and 4705. Values are NZ\$ free on board (f.o.b.).
- 2 Individual entries may not sum to shown totals due to rounding.
- 3 Other countries are all other countries to which New Zealand has exported chemical wood pulp.

**Symbol**

P Provisional.

**Table 12: Fibreboard exports by country of destination by quantity and value<sup>1,2</sup>**

Country of destination	Quarter ended								Year ended	
	31 March 2009		30 June 2009		30 September 2009		31 December 2009		31 December 2009	
	Quantity (m <sup>3</sup> )	Value (NZ\$ 000)	Quantity (m <sup>3</sup> )	Value (NZ\$ 000)	Quantity (m <sup>3</sup> )	Value (NZ\$ 000)	Quantity (m <sup>3</sup> )	Value (NZ\$ 000)	Quantity (m <sup>3</sup> )	Value (NZ\$ 000)
Australia	681	286	5 584	2 718	3 071	1 663	4 793	2 274	14 129	6 942
China	15 708	8 166	23 772	8 671	27 772	9 920	19 115	7 233	86 368	33 990
Indonesia	5 511	3 274	4 964	2 100	10 301	3 862	11 148	4 449	31 924	13 686
Japan	44 468	31 629	33 375	18 021	40 476	20 045	55 511	25 964	173 830	95 658
Korea	8 375	3 276	4 543	1 271	2 161	603	1 393	442	16 471	5 592
Pacific Islands <sup>3</sup>	773	199	954	82	355	191	102	53	2 186	525
Philippines	1 026	559	754	282	1 079	460	2 259	986	5 118	2 287
Taiwan	2 075	857	2 426	798	3 466	1 152	4 261	1 598	12 229	4 406
USA	8 053	3 244	9 852	4 058	12 603	5 601	9 876	4 167	40 383	17 069
Vietnam	3 775	2 022	10 063	3 563	16 825	5 803	21 464	8 061	52 126	19 449
Other countries <sup>4</sup>	17 272	6 823	30 874	9 434	17 134	5 499	13 711	4 606	78 991	26 362
<b>Total</b>	<b>107 717</b>	<b>60 334</b>	<b>127 161</b>	<b>51 000</b>	<b>135 242</b>	<b>54 798</b>	<b>143 634</b>	<b>59 832</b>	<b>513 754</b>	<b>225 964</b>

Country of destination	Quarter ended								Year ended	
	31 March 2010		30 June 2010		30 September 2010		31 December 2010		31 December 2010	
	Quantity (m <sup>3</sup> )	Value (NZ\$ 000)	Quantity (m <sup>3</sup> )	Value (NZ\$ 000)	Quantity (m <sup>3</sup> )	Value (NZ\$ 000)	Quantity (m <sup>3</sup> )	Value (NZ\$ 000)	Quantity (m <sup>3</sup> )	Value (NZ\$ 000)
Australia	5 734	2 598	4 127	1 912	4 726	2 004	2 172	833	16 759	7 347
China	19 000	8 069	21 685	9 107	18 402	8 161	18 478	7 353	77 566	32 690
Indonesia	10 863	4 604	10 257	4 398	9 933	4 310	10 708	4 139	41 761	17 450
Japan	45 973	22 116	49 134	23 335	53 825	25 700	53 931	24 846	202 862	95 996
Korea	1 501	567	1 652	606	154	32	2 205	700	5 512	1 906
Pacific Islands <sup>3</sup>	631	114	235	136	269	185	118	76	1 253	512
Philippines	1 358	630	1 764	810	1 765	811	1 524	624	6 411	2 875
Taiwan	2 531	930	4 068	1 563	2 357	958	2 663	962	11 619	4 414
USA	8 708	3 588	10 349	4 252	11 971	5 005	9 086	3 483	40 114	16 328
Vietnam	8 211	3 442	11 302	4 694	12 831	5 393	10 497	4 086	42 842	17 614
Other countries <sup>4</sup>	10 482	3 965	9 246	3 491	23 568	8 180	19 942	6 653	63 238	22 289
<b>Total</b>	<b>114 993</b>	<b>50 623</b>	<b>123 818</b>	<b>54 303</b>	<b>139 800</b>	<b>60 739</b>	<b>131 325</b>	<b>53 756</b>	<b>509 935</b>	<b>219 420</b>

Country of destination	Quarter ended								Year ended	
	31 March 2011		30 June 2011		30 September 2011 <sup>P</sup>		31 December 2011		30 September 2011 <sup>P</sup>	
	Quantity (m <sup>3</sup> )	Value (NZ\$ 000)	Quantity (m <sup>3</sup> )	Value (NZ\$ 000)	Quantity (m <sup>3</sup> )	Value (NZ\$ 000)	Quantity (m <sup>3</sup> )	Value (NZ\$ 000)	Quantity (m <sup>3</sup> )	Value (NZ\$ 000)
Australia	1 629	1 034	2 643	1 334	2 918	1 837			9 361	5 038
China	19 668	7 689	16 876	6 487	17 135	6 514			72 158	28 042
Indonesia	10 385	4 039	12 920	4 819	17 220	6 234			51 232	19 231
Japan	51 600	24 167	66 433	29 703	62 636	28 447			234 601	107 163
Korea	217	62	503	134	488	121			3 414	1 017
Pacific Islands <sup>3,4</sup>	424	149	300	107	S	164			S	496
Philippines	1 760	732	1 445	585	3 099	1 324			7 829	3 264
Taiwan	3 181	1 210	1 794	688	2 905	1 063			10 543	3 924
USA	9 954	3 917	12 654	4 645	10 056	3 938			41 750	15 984
Vietnam	10 581	3 923	15 510	5 772	18 129	6 738			54 718	20 518
Other countries <sup>4,5</sup>	18 212	5 973	16 882	5 459	S	4 968			S	23 053
<b>Total</b>	<b>127 612</b>	<b>52 894</b>	<b>147 961</b>	<b>59 732</b>	<b>S</b>	<b>61 348</b>			<b>S</b>	<b>227 730</b>

**Source**

Statistics New Zealand. Compiled by Information and Analysis, Ministry of Agriculture and Forestry.

**Notes**

- 1 Fibreboard is those export items in HS item grouping 4411. Values are NZ\$ free on board (f.o.b.).
- 2 Individual entries may not sum to shown totals due to rounding.
- 3 Comprises Melanesia, Micronesia and Polynesia and Norfolk Island (excluding Hawaii).
- 4 Fibreboard exports have been suppressed for the September 2011 quarter and year end due to data quality issues from Statistics New Zealand.
- 5 Other countries are all other countries to which New Zealand exported fibreboard.

**Symbol**

- P Provisional.  
S Suppressed.

**Table 13: Plywood exports by country of destination by quantity and value<sup>1,2</sup>**

Country of destination	Quarter ended								Year ended	
	31 March 2008		30 June 2008		30 September 2008		31 December 2008		31 December 2008	
	Quantity (m <sup>3</sup> )	Value (NZ\$ 000)	Quantity (m <sup>3</sup> )	Value (NZ\$ 000)	Quantity (m <sup>3</sup> )	Value (NZ\$ 000)	Quantity (m <sup>3</sup> )	Value (NZ\$ 000)	Quantity (m <sup>3</sup> )	Value (NZ\$ 000)
Australia	15 685	12 505	13 931	13 105	17 869	17 821	20 282	14 162	67 767	57 593
Japan	847	8 728	550	10 833	1 425	13 279	2 739	14 587	5 561	47 427
Pacific Islands <sup>3</sup>	839	694	803	679	6 901	519	425	467	8 968	2 359
Phillipines	-	-	-	-	-	-	-	-	-	-
Other countries <sup>4</sup>	169	171	1 332	515	1 423	679	2 059	1 787	4 984	3 152
<b>Total</b>	<b>17 539</b>	<b>22 098</b>	<b>16 617</b>	<b>25 131</b>	<b>27 619</b>	<b>32 299</b>	<b>25 504</b>	<b>31 003</b>	<b>87 279</b>	<b>110 530</b>

Country of destination	Quarter ended								Year ended	
	31 March 2009		30 June 2009		30 September 2009		31 December 2009		31 December 2009	
	Quantity (m <sup>3</sup> )	Value (NZ\$ 000)	Quantity (m <sup>3</sup> )	Value (NZ\$ 000)	Quantity (m <sup>3</sup> )	Value (NZ\$ 000)	Quantity (m <sup>3</sup> )	Value (NZ\$ 000)	Quantity (m <sup>3</sup> )	Value (NZ\$ 000)
Australia	8 388	9 576	10 269	12 577	11 878	13 294	10 589	11 983	41 124	47 431
Japan	1 472	13 272	1 197	11 828	3 138	14 161	1 621	10 536	7 428	49 797
Pacific Islands <sup>3</sup>	1 046	503	764	495	753	526	487	506	3 049	2 030
Phillipines	-	-	-	-	48	71	47	70	95	142
Other countries <sup>4</sup>	1 535	1 283	966	712	609	480	1 032	592	4 142	3 067
<b>Total</b>	<b>12 443</b>	<b>24 635</b>	<b>13 196</b>	<b>25 611</b>	<b>16 425</b>	<b>28 533</b>	<b>13 775</b>	<b>23 688</b>	<b>55 839</b>	<b>102 467</b>

Country of destination	Quarter ended								Year ended	
	31 March 2010		30 June 2010		30 September 2010		31 December 2010		31 December 2010	
	Quantity (m <sup>3</sup> )	Value (NZ\$ 000)	Quantity (m <sup>3</sup> )	Value (NZ\$ 000)	Quantity (m <sup>3</sup> )	Value (NZ\$ 000)	Quantity (m <sup>3</sup> )	Value (NZ\$ 000)	Quantity (m <sup>3</sup> )	Value (NZ\$ 000)
Australia	12 911	14 428	12 943	14 408	15 289	17 214	15 142	16 023	56 285	62 074
Japan	5 349	14 757	3 292	13 698	5 265	14 480	7 149	16 389	21 054	59 325
Pacific Islands <sup>3</sup>	820	662	870	694	1 226	598	1 385	642	4 300	2 596
Phillipines	-	1 215	6	6	-	-	-	-	6	1 221
Other countries <sup>4</sup>	283	238	1 986	1 546	216	231	917	782	3 402	2 798
<b>Total</b>	<b>19 363</b>	<b>31 301</b>	<b>19 097</b>	<b>30 352</b>	<b>21 996</b>	<b>32 523</b>	<b>24 592</b>	<b>33 836</b>	<b>85 047</b>	<b>128 012</b>

Country of destination	Quarter ended								Year ended	
	31 March 2011		30 June 2011		30 September 2011 <sup>P</sup>		31 December 2011		30 September 2011 <sup>P</sup>	
	Quantity (m <sup>3</sup> )	Value (NZ\$ 000)	Quantity (m <sup>3</sup> )	Value (NZ\$ 000)	Quantity (m <sup>3</sup> )	Value (NZ\$ 000)	Quantity (m <sup>3</sup> )	Value (NZ\$ 000)	Quantity (m <sup>3</sup> )	Value (NZ\$ 000)
Australia	14 376	14 166	13 668	14 505	16 845	17 458	-	-	60 031	62 153
Japan	5 952	15 160	10 818	22 007	9 710	20 647	-	-	33 628	74 204
Pacific Islands <sup>3</sup>	1 558	589	1 557	639	762	518	-	-	5 262	2 387
Phillipines	-	-	-	-	-	1 068	-	-	-	1 068
Other countries <sup>4</sup>	811	613	267	174	61	89	-	-	2 056	1 659
<b>Total</b>	<b>22 697</b>	<b>30 528</b>	<b>26 310</b>	<b>37 325</b>	<b>27 378</b>	<b>39 781</b>	-	-	<b>100 976</b>	<b>141 471</b>

**Source**

Statistics New Zealand. Compiled by Information and Analysis, Ministry of Agriculture and Forestry.

**Notes**

- 1 Plywood is those items in HS item codes 4412. Values are NZ\$ free on board (f.o.b.), and may include items for which no quantities are given.
- 2 Individual entries may not sum to shown totals due to rounding.
- 3 Comprises Melanesia, Micronesia and Polynesia and Norfolk Island (excluding Hawaii).
- 4 Other countries are all other countries to which New Zealand exported plywood.

**Symbol**

P Provisional.

**Table 14: Particleboard exports by country of destination by quantity and value<sup>1,2</sup>**

Country of destination	Quarter ended								Year ended	
	31 March 2008		30 June 2008		30 September 2008		31 December 2008		31 December 2008	
	Quantity (m <sup>3</sup> )	Value (NZ\$ 000)	Quantity (m <sup>3</sup> )	Value (NZ\$ 000)	Quantity (m <sup>3</sup> )	Value (NZ\$ 000)	Quantity (m <sup>3</sup> )	Value (NZ\$ 000)	Quantity (m <sup>3</sup> )	Value (NZ\$ 000)
Australia	16 385	5 972	25 426	8 908	15 280	5 801	15 809	6 116	72 900	26 797
Cook Islands	3	3	-	-	18	20	28	24	48	46
Fiji	55	17	28	23	290	196	158	123	530	359
Japan	4 299	2 304	7 342	4 238	21 656	12 944	9 402	7 577	42 699	27 063
Korea	314	60	942	168	1 107	243	1 859	520	4 222	991
Other Pacific Islands <sup>3</sup>	214	149	138	85	532	275	444	396	1 328	905
Vietnam	539	128	467	102	867	199	1 891	649	3 764	1 078
Other countries <sup>4</sup>	-	-	276	55	43	13	25	1	344	70
<b>Total</b>	<b>21 808</b>	<b>8 632</b>	<b>34 619</b>	<b>13 579</b>	<b>39 792</b>	<b>19 691</b>	<b>29 616</b>	<b>15 406</b>	<b>125 836</b>	<b>57 308</b>

Country of destination	Quarter ended								Year ended	
	31 March 2009		30 June 2009		30 September 2009		31 December 2009		31 December 2009	
	Quantity (m <sup>3</sup> )	Value (NZ\$ 000)	Quantity (m <sup>3</sup> )	Value (NZ\$ 000)	Quantity (m <sup>3</sup> )	Value (NZ\$ 000)	Quantity (m <sup>3</sup> )	Value (NZ\$ 000)	Quantity (m <sup>3</sup> )	Value (NZ\$ 000)
Australia	12 397	4 373	8 122	2 881	7 995	2 978	2 853	1 320	31 367	11 552
Cook Islands	6	6	15	18	20	21	15	20	55	64
Fiji	269	208	137	133	145	120	114	70	665	531
Japan	16 112	14 052	7 769	5 894	18 110	12 747	7 288	4 837	49 279	37 530
Korea	-	-	-	-	-	-	-	-	-	-
Other Pacific Islands <sup>3</sup>	365	314	602	478	512	400	670	451	2 149	1 643
Vietnam	297	95	-	-	295	67	-	-	592	162
Other countries <sup>4</sup>	10	7	-	-	39	32	-	-	49	39
<b>Total</b>	<b>29 455</b>	<b>19 054</b>	<b>16 644</b>	<b>9 404</b>	<b>27 117</b>	<b>16 365</b>	<b>10 939</b>	<b>6 698</b>	<b>84 156</b>	<b>51 521</b>

Country of destination	Quarter ended								Year ended	
	31 March 2010		30 June 2010		30 September 2010		31 December 2010		31 December 2010	
	Quantity (m <sup>3</sup> )	Value (NZ\$ 000)	Quantity (m <sup>3</sup> )	Value (NZ\$ 000)	Quantity (m <sup>3</sup> )	Value (NZ\$ 000)	Quantity (m <sup>3</sup> )	Value (NZ\$ 000)	Quantity (m <sup>3</sup> )	Value (NZ\$ 000)
Australia	2 195	967	3 498	1 621	3 353	1 689	1 659	741	10 705	5 018
Cook Islands	6	6	52	19	22	21	7	7	86	54
Fiji	221	203	92	80	196	167	107	94	616	544
Japan	14 844	10 426	10 584	7 578	13 577	9 865	11 579	8 366	50 584	36 235
Korea	-	-	-	-	-	-	-	-	-	-
Other Pacific Islands <sup>3</sup>	232	200	278	235	520	241	284	226	1 315	902
Vietnam	-	-	-	-	-	-	-	-	-	-
Other countries <sup>4</sup>	-	-	-	-	-	-	18	42	18	42
<b>Total</b>	<b>17 499</b>	<b>11 803</b>	<b>14 504</b>	<b>9 533</b>	<b>17 667</b>	<b>11 982</b>	<b>13 655</b>	<b>9 476</b>	<b>63 324</b>	<b>42 795</b>

Country of destination	Quarter ended								Year ended	
	31 March 2011		30 June 2011		30 September 2011 <sup>P</sup>		31 December 2011		30 September 2011 <sup>P</sup>	
	Quantity (m <sup>3</sup> )	Value (NZ\$ 000)	Quantity (m <sup>3</sup> )	Value (NZ\$ 000)	Quantity (m <sup>3</sup> )	Value (NZ\$ 000)	Quantity (m <sup>3</sup> )	Value (NZ\$ 000)	Quantity (m <sup>3</sup> )	Value (NZ\$ 000)
Australia	1 504	634	1 864	938	3 454	1 455	-	-	8 481	3 769
Cook Islands	3	3	9	10	19	22	-	-	38	42
Fiji	83	72	159	131	402	182	-	-	752	480
Japan	11 545	7 814	15 158	9 538	16 456	9 980	-	-	54 738	35 698
Korea	-	-	-	-	-	-	-	-	-	-
Other Pacific Islands <sup>3</sup>	209	279	256	231	331	271	-	-	1 081	1 007
Vietnam	-	-	-	-	-	-	-	-	-	-
Other countries <sup>4</sup>	248	50	18	40	1	-	-	-	286	131
<b>Total</b>	<b>13 592</b>	<b>8 852</b>	<b>17 465</b>	<b>10 889</b>	<b>20 664</b>	<b>11 910</b>	-	-	<b>65 376</b>	<b>41 128</b>

**Source**

Statistics New Zealand. Compiled by Information and Analysis, Ministry of Agriculture and Forestry.

**Notes**

- 1 Particleboard is those items in HS item codes 4410. Values are NZ\$ free on board (f.o.b.).
- 2 Individual entries may not sum to shown totals due to rounding.
- 3 Comprises Melanesia, Micronesia, Polynesia (excluding Hawaii), Norfolk Island.
- 4 Other countries are all other countries to which New Zealand exported particleboard.

**Symbol**

P Provisional.