

Fisheries (E-logbook Technical Specifications) Circular 2017

Issuing Authority

This circular is issued under regulation 47 of the Fisheries (Reporting) Regulations 2017 by Martyn Dunne, Chief Executive of the Ministry for Primary Industries.

Introduction

This introduction is not part of the circular itself, but provides the background and broad purpose of the circular.

This circular provides technical requirements for the e-logbooks to be used by commercial fishing permit holders to complete Electronic Reporting. It is intended to provide the developers of those e-logbooks with the legal requirements, and is therefore not a useful guide to the requirements for permit holders.

The Fisheries (Reporting) Regulations 2017 sets new requirements for commercial fishers to provide the Chief Executive of the Ministry for Primary Industries with Electronic Reporting relating to fish catches, catches of non-fish and protected fish species, processing, disposal, and landing.

This will largely replace the existing paper-based reporting system. The new requirements will apply for trips starting on or after 1 October 2017 for all permit holders, unless they are subject of an exemption.

This circular sets out the technical requirements for the “e-logbooks” that commercial fishers will need to use to provide the required information. It also prescribes exactly what information must be provided, and how that information is to be transmitted to the Chief Executive. A key purpose of this circular is to provide developers of e-logbooks with the detail they need to design e-logbooks that will meet MPI’s requirements and the needs of permit holders.

The codes to be used when completing e-logbooks, and instructions on how to complete the different types of reports, are set out in the Fisheries (E-logbook Users Instructions and Codes) Circular 2017.

E-logbooks are an important new tool for fisheries management. MPI will want to ensure the tool remains relevant and may want to add or amend fields and codes in e-logbooks in the future. Developers should keep this in mind when designing software to ensure they allow for a degree of flexibility. MPI may also effectively require that some existing fields are made ‘optional’ or switched off for a time. MPI appreciates that software changes take time to develop and test, and must be clearly communicated to software providers.

Contents	Page
1 Title	4
2 Commencement	4
3 Purpose	4
4 Application and transitional arrangements	4
5 Definitions	4
Part 1: E-logbooks	5
6 Use of e-logbooks	5
7 E-logbooks to produce reports and records	5
8 Reports and records to have various states	5
9 Authentication of authorised users	6
10 Declarations	7
11 Summaries	7
12 Transmission	7
13 Security of transmission	7
14 Integrity and non-repudiation of data	8
15 Storing data	8
16 Robustness of system	8
17 Devices	8
18 Business continuity	8
19 Authoritative record	8
Part 2: Event reports and trip records	8
20 Trip records	8
21 Content of event reports	8
22 Column headed "Mand."	9
23 Column headed "Data Type"	9
24 Column headed "Validation"	9
25 Completed date/time	9
Schedule 1 – Trip Records	10
Part 1A: Trip start records	10
Part 1B: Trip end records	11
Schedule 2: Fish catch reports	12
Part 2A: Trawl	12
Schedule 3: NFPS Reports	14
Schedule 4: Processing Reports	15
Schedule 5: Disposal Reports	17
Schedule 6: Landing Reports	18

1 Title

- (1) This circular is the Fisheries (E-logbook Technical Specifications) Circular 2017.

2 Commencement

- (1) This circular comes into force on 1 October 2017.

3 Purpose

- (1) The purpose of this circular is—
- to set out the requirements of the electronic reporting system (in this circular referred to as an e-logbook) used by a permit holder when providing event reports; and
 - to specify the manner and form in which event reports and additional information is required to be in reports.

4 Application

- (1) As at 1 October 2017, this circular applies to all permit holders (unless an applicable exemption, issued under regulation 46 of the Fisheries (Reporting) Regulations 2017, applies).

5 Definitions

- (1) In this circular—

Act means the Fisheries Act 1996

authorised user means a person who is registered with the SDA as an authorised user in relation to—

- one or more specified permit holders; and
- one or more specified e-logbooks

e-logbook means an electronic system used by a permit holder to create event reports and trip records and transmit them to the chief executive

record means a trip start record or a trip end record, as set out in Schedule 1

report means an event report of a type set out in Schedule 2, 3, 4, 5, or 6, namely:

- fish catch reports:
- non-fish species or protected species catch reports (NFPS reports):
- processing reports:
- disposal reports:
- landing reports

MPI means the Ministry for Primary Industries

NFPS means non-fish or protected species

Regulations means the Fisheries (Reporting) Regulations 2017

relevant authorised user, in relation to a report or record, means an authorised user who is registered with the SDA—

- for the particular e-logbook that is generating that report or record; and
- for the permit holder who is generating that report or record

SDA means the service delivery agency that provides operational support to the commercial fishing industry under contract to MPI, and that receives reports and records from permit holders for further transmission to the chief executive following validation. (As at the date this circular comes into force, the SDA is Commercial Fisheries Services Ltd, operating as FishServe.)

Trip ID means a number or other type of identification that identifies a particular fishing trip.

- (2) Any term that is defined in the Act or Regulations and used but not defined in this circular has the meaning set out in the Act or Regulations. (Key terms defined in the Regulations include: **permit holder** and **fishing trip** or **trip**.)

Part 1: E-logbooks

6 Use of e-logbooks

- (1) Every permit holder who is required by the Regulations to provide a report to chief executive must do so using an e-logbook that—
- a) complies with this circular; and
 - b) is registered with the SDA as being in use by the permit holder.
- (2) The e-logbook may comprise any number of components as long as the system as a whole complies with the requirements of this circular.

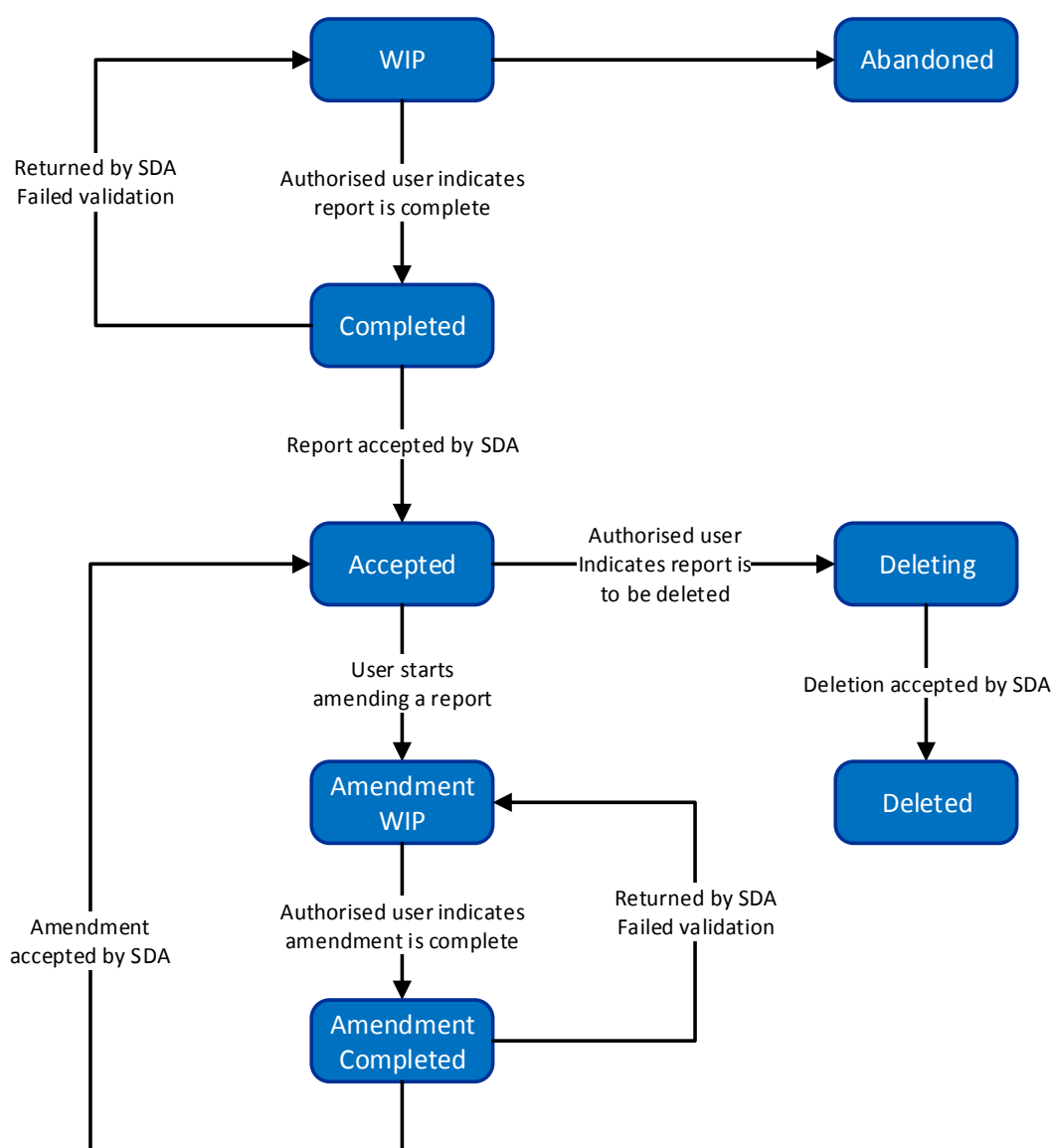
7 E-logbooks to produce reports and records

- (1) Every e-logbook must produce reports and records that—
- a) comply with the requirements set out in the Schedules for reports and records of different types; and
 - b) accept as codes only those codes that are listed in the Fisheries (E-logbook Users Instructions and Codes) Circular 2017; and
 - c) give a unique identifier to each new event for which a report is generated and each new trip for which a new record is generated; and
 - d) record the current type and state of every report and record.
- (2) No part of an e-logbook may display the MPI logo or the crest of the New Zealand government.

8 Reports and records to have various states

- (1) E-logbooks must provide for reports and records to exist in one of 8 states, as follows:
- a) WIP (work in progress) – which means the report or record can be edited or deleted using the e-logbook:
 - b) Completed – which means the report or record has been signed off as Completed by a relevant authorised user and can no longer be edited using the e-logbook:
 - c) Accepted – which means that a Completed or Amendment Completed report or record has passed SDA validation and can no longer be edited using the e-logbook:
 - d) Amendment WIP – which means that a report or record that was Accepted has been changed to a state in which it can be amended by the user:
 - e) Amendment Completed – which means that a report or record in the Amendment WIP state has been signed off as complete by an authorised user and can no longer be edited using the e-logbook:
 - f) Deleting – which means that a report or record that was Accepted has been marked as deleted by an authorised user:
 - g) Deleted – which means that a report or record with the state Deleting has been accepted by the SDA as deleted:
 - h) Abandoned – which means a WIP report that is abandoned before it is completed.
- (2) E-logbooks need not use the names or titles of the states listed in subclause (1), and may use additional states, as long as the e-logbook can achieve a result that is consistent with this clause.
- (3) E-logbooks must enable the following processes:
- a) when a new report or record is opened, it remains as WIP until an authorised user changes the state to Completed, or it is Abandoned without being completed:

- b) a WIP or Amendment WIP report or record can only be changed to Completed or Amendment Completed by a relevant authorised user:
 - c) only Completed, Amendment Completed, and Deleting reports and records can be transmitted to the SDA:
 - d) if a Completed or Amendment Completed report or record passes SDA validation, the state of the report or record in the e-logbook must change to Accepted:
 - e) if a Completed or Amendment Completed report or record does not pass SDA validation, it must be returned to WIP or Amendment WIP (as appropriate) for correction:
 - f) an Accepted report or record can be changed to Deleting only by a relevant authorised user:
 - g) a Deleting report or record can be changed to Deleted only when the SDA accepts the deletion.
- (4) The states, and some of the possible transitions between them, are summarised below. (If there is any conflict between the diagram and the rest of this clause, the rest of this clause prevails.)



9 Authentication of authorised users

- (1) E-logbooks must authenticate (by, for instance, the use of passwords, pin-numbers, or tokens) the identity of a person who claims to be a relevant authorised user, before the person can make a declaration referred to in clause 10.

- (2) An e-logbook must not allow or enable a user to have access to authentication credentials.

10 Declarations

- (1) E-logbooks must require that a declaration is completed before the status of a report or record is changed from WIP to Completed or from Amendment WIP to Amendment Completed.
- (2) The declaration must be to the following effect:
- a) that the declaration is made by a relevant authorised user; and
 - b) the relevant authorised user is satisfied that the report or record is complete and correct in all respects.
- (3) E-logbooks must require that a declaration is completed before the status of a report or record is changed from Accepted to Deleting.
- (4) The declaration must be to the following effect:
- a) that the declaration is made by a relevant authorised user; and
 - b) the relevant authorised user is satisfied that there are good grounds for deleting the report or record.

11 Summaries

- (1) Every e-logbook must be able to generate summaries of reports and records.
- (2) Every summary must, at a minimum,—
- a) allow drilling-down so that every field in any report or record (of whatever type or state) can be accessed via the summary; and
 - b) allow for reports and records to be displayed in reverse date order; and
 - c) allow users to filter event reports by—
 - i) type (eg, fish catch report, disposal report); and
 - ii) state (eg, WIP or Completed); and
 - iii) date, which must be a date of relevance to the particular report or record (eg, tow start date, completion of report).
- (3) Every summary must be able to be accessed by fisheries officers and fisheries observers.
- (4) A device used to display a summary, and the reports and records accessible via it, must display all the reports' and records' fields in a readable format.

12 Transmission

- (1) Every e-logbook must transmit reports and records—
- a) to the SDA; and
 - b) in such a way that the SDA is able to receive them.
- (2) Every e-logbook must be able to transmit reports and records to the SDA within the times required by the Regulations.

13 Security of transmission

- (1) Every e-logbook must be designed and operated to ensure that data contained in any report or record sent from a permit holder to the SDA cannot be changed by any third party.
- (2) Every e-logbook must ensure that reports and records transmitted between the permit holder and the SDA are encrypted during transmission.

14 Integrity and non-repudiation of data

- (1) E-logbooks must ensure the integrity and non-repudiation of data contained in reports and records, and for that purpose must provide that —
 - a) every report and record is digitally signed, using a valid digital signature, by the e-logbook when the state of the report or record is changed from WIP to Completed, or from Amendment WIP to Amendment Completed; and
 - b) when the report or record is provided to the SDA, the digital signature is included.

15 Storing data

- (1) Every e-logbook must save data, as it is entered, in such a way that it can be recovered if power is cut or the system is turned off.
- (2) Every e-logbook must store every report and record (including reports and records that are WIP, Amended WIP, Deleted, or Abandoned) in its most recent state for a minimum of 90 days.

16 Robustness of system

- (1) Every e-logbook must be designed and put together so that it operates reliably in the particular commercial fishing environment in which it is intended to operate.
- (2) Every e-logbook must be capable of—
 - a) operating in a poor connectivity environment; and
 - b) having fields completed while the system is off-line.

17 Devices

- (1) Each physical component of an e-logbook system must be suitable for use in the particular commercial fishing environment in which that component is intended to operate.

18 Business continuity

- (1) Every e-logbook must have a business continuity plan associated with it to provide for what happens if the e-logbook is unable to produce reports and records, or transmit them, as required by the Regulations and this circular.

19 Authoritative record

- (1) The most recent report or record that is Accepted by the SDA is the authoritative record of that version of the report or record.

Part 2: Event reports and trip records

20 Trip records

- (1) E-logbooks must ensure that a Trip ID cannot be entered in a report unless a trip start record for a trip with the same Trip ID has been completed.

21 Content of event reports

- (1) Each type of report must comply with the requirements relating to that type of report that are set out in the Schedules.

22 Column headed “Mand.”

- (1) In the Schedules, the column headed “Mand.” indicates whether an attribute is mandatory or not.
- (2) If an attribute that is indicated as mandatory (“Y”) is missing or has a null value, the event report will not be accepted by the SDA.
- (3) If an attribute is indicated as conditional (“Cond”), it indicates that the attribute may become mandatory, depending on the value of another attribute.

23 Column headed “Data Type”

- (1) In the Schedules, the column headed “Data Type” indicates the kind of data that must be used to complete that field.
- (2) The reference to “GUID” means that a globally unique identifier is required. This must be in the form of a 36-character string representing the hexadecimal form of a 128 bit integer (eg, 2226a625-af1c-4a94-a103-42514028684d).
- (3) The reference to “date/time” means that a date and time is required. This must be in 24-hour date and time values with the UTC offset, as in YYYY-MM-DDThh:mm:ssTZD, where TZD is the time zone designator (+hh:mm or -hh:mm). For example, “2017-11-04T12:30:00+13:00” means the local time was 12.30 pm on 4 November 2017 and the time zone was 13 hours ahead of UTC.
- (4) The reference to lat/long means that a position reference giving latitude and longitude is required. This must be given as decimal values with a minimum of 4 decimal places for system positions and 3 decimal places for manual positions, and must be validated by the e-logbook—
 - a) for latitude, to between -90 degrees and 90 degrees; and
 - b) for longitude, to between -180 degrees and 180 degrees.
- (5) Other terms used in this column have the following meanings:

integer means a whole number

string means a sequence of characters (which can be numeric, alphabetic, or special characters)

user token means a security token of some kind that the e-logbook automatically includes in a report or record when an authorised user completes a declaration.

24 Column headed “Validation”

- (1) In the Schedules, the column headed “Validation” sets out the validation that the SDA must carry out before a report will be accepted.

25 Completed date/time

- (1) The attribute “Completed Date/time” must be populated by the system when a WIP report or record is changed to Completed.
- (2) The date/time inserted must not be capable of being overridden by the user or reset by the e-logbook.

Schedule 1 – Trip Records

Part 1A: Trip start records

Attribute Name	Mand.	Data Type	Validation
Event ID	Y	GUID	Must be unique to the trip start record being created or amended.
Trip ID	Y	String	This <i>Trip ID</i> value must not already exist on another <i>Trip Start</i> record for the given Vessel Number, or for the given Client Number in the case of <i>Is Vessel Used</i> being <i>false</i> .
Client number	Y	String	Must be a valid Client Number.
Is vessel used?	Y	Boolean	
Vessel number	Cond.	String	Must be provided if <i>is vessel used</i> is true. If provided must be a valid vessel registration number.
Person in charge	Y	String	Must contain at least 2 characters
Start date/time (System)	Y	Date/time	
Start location (System) - Latitude	Cond.	Lat/long	These must be provided unless the manual latitude and longitude attributes have been populated.
Start location (System) - Longitude	Cond.	Lat/long	
Start date/time (Manual)	N	Date/time	
Start location (Manual) - Latitude	Cond.	Lat/long	These must be populated if the system latitude and longitude attributes couldn't be populated.
Start location (Manual) - Longitude	Cond.	Lat/long	
Amendment reason	Cond.	String	Must not be populated when creating a trip start record. Must be populated when amending an existing trip start record, and must then contain at least 2 characters.
Event version	Cond.	Integer	Must not be populated when creating a trip start record. Must be populated when amending an existing trip start record. Must correspond to the current version number for the <i>event ID</i> , as recorded by the SDA.
Notes	N	String	
Completer User ID	Y	String	
Completed date/time	Cond.	Date/time	Must be populated when creating a trip start record. Must not be populated when amending an existing trip start record.

Part 1B: Trip end records

Attribute Name	Mand.	Data Type	Validation
Event ID	Y	GUID	Must be unique to the trip end record being created or amended.
Trip ID	Y	String	This <i>trip ID</i> value must not exist on another trip end record for the given vessel number, or for the given client number in the case of <i>is vessel used?</i> being false.
Client number	Y	String	Must be a valid client number.
Is vessel used?	Y	Boolean	
Vessel number	Cond.	String	Must be provided if <i>is vessel used?</i> is true. If provided, must be a valid vessel registration number.
Person in charge	Y	String	Must contain at least 2 characters.
End date/time (System)	Y	Date/time	
End location (System) - latitude	Cond.	Lat/long	These must be provided unless the manual latitude and longitude attributes have been populated.
End location (System) - longitude	Cond.	Lat/long	
End date/time (Manual)	N	Date/time	
End location (Manual) - latitude	Cond.	Lat/long	These must be populated if the <i>system</i> latitude and longitude attributes couldn't be populated.
End location (Manual) - longitude	Cond.	Lat/long	
Amendment reason	Cond.	String	Must not be populated when creating a trip end record. Must be populated when amending an existing trip end record, and must then contain at least 2 characters.
Event version	Cond.	Integer	Must not be populated when creating a trip end record. Must be populated when amending an existing trip end record. Must correspond to the current version number for the Event ID, as recorded by the SDA.
Notes	N	String	
Completer User ID	Y	String	
Completed date/time	Cond.	Date/time	Must be populated when creating a trip end record. Must not be populated when amending an existing trip end record.

Schedule 2: Fish catch reports

Part 2A: Trawl

Attribute Name	Mand.	Data Type	Validation
Event ID	Y	GUID	Must be unique to the event being created or amended.
Trip ID	Y	String	
Client number	Y	String	Must be a valid client number.
Is vessel used?	Y	Boolean	Must be <i>true</i> .
Vessel number	Y	String	Must be a valid vessel registration number.
Fishing method code	Y	String	Must be a valid Trawl method code.
Target species code	Y	String	Must be a valid species code.
Mitigation device codes	N	Array of Strings	Must be valid mitigation device codes.
Number of nets	Y	Integer	Must be greater than zero.
Vessel pair number	N	String	If provided must be a valid vessel registration number.
Wing spread (m)	Y	Integer	Must be greater than zero.
Headline height (m)	Y	Decimal 2dp	Must be greater than zero.
Codend mesh size (mm)	Y	Integer	Must be greater than or equal to zero.
Ground rope depth (m)	Y	Integer	Must be greater than zero.
Bottom depth (m)	Y	Integer	Must be greater than zero.
Speed knots	Y	Decimal 2dp	Must be greater than zero.
Is net lost?	Cond.	Boolean	Must be true if the <i>finish location</i> position and date/time details could not be populated.
Start date/time (System)	Y	Date/time	
Start latitude (System)	Cond.	Lat/long	These must be provided unless the manual latitude and longitude attributes have been populated for the start location.
Start longitude (System)	Cond.	Lat/long	
Start date/time (Manual)	N	Date/time	
Start latitude (Manual)	Cond.	Lat/long	These must be populated if the system latitude and longitude attributes couldn't be populated for the start location.
Start longitude (Manual)	Cond.	Lat/long	
Finish date/time (System)	Cond.	Date/time	These are required unless <i>is net lost</i> is <i>true</i> . The system latitude and longitude values must be provided unless the manual equivalents are populated.
Finish latitude (System)	Cond.	Lat/long	
Finish longitude (System)	Cond.	Lat/long	
Finish date/time (Manual)	N	Date/time	
Finish latitude (Manual)	Cond.	Lat/long	These must be populated if the system location attributes for the <i>finish location</i> couldn't be populated and <i>is net lost</i> isn't <i>true</i> .
Finish longitude (Manual)	Cond.	Lat/long	
Total estimated catch (kg)	Y	Decimal 2dp	Must be greater than or equal to zero.
Catches	Cond.	Array of catch records	See below for validation details.
Amendment reason	Cond.	String	Must not be populated when creating an event report. Must be populated when amending an existing event report, and must then contain at least 2 characters.
Event version	Cond.	Integer	Must not be populated when creating an event report. Must be populated when amending an existing event report. Must correspond to the current version number for the <i>event ID</i> , as recorded by the SDA.
Notes	N	String	
Completer User ID	Y	String	

Attribute Name	Mand.	Data Type	Validation
Completed date/time	Cond.	Date/time	Must be populated when creating an event report. Must not be populated when amending an existing event report.

Note that the colours in the table above have no specific meaning. They are just intended as a visual distinction between the two sets of date/time/position data sets.

Catch Records

The trawl report can contain *zero* or *many* Catch records. If *Total Estimated Catch Kg* is greater than zero then at least *one* Catch record must be provided.

Attribute Name	Mand.	Data Type	Validation
Species code	Y	String	Must be a valid species code.
Greenweight estimate (kg)	Y	Decimal 2dp	Must be greater than or equal to zero.

Schedule 3: NFPS Reports

Attribute Name	Mand.	Data Type	Validation
Event ID	Y	GUID	Must be unique to the event being created or amended.
Trip ID	Y	String	
Client number	Y	String	Must be a valid client number.
Is vessel used?	Y	Boolean	
Vessel number	Cond.	String	Must be provided if <i>Is vessel used</i> is true. Must be a valid vessel registration number.
Fish catch event ID	N	GUID	
Event date/time (System)	Y	Date/time	
Location (System) - latitude	Cond.	Lat/long	These must be provided unless the manual latitude and longitude attributes have been populated.
Location (System) - longitude	Cond.	Lat/long	
Event date/time (Manual)	N	Date/time	
Location (Manual) - latitude	Cond.	Lat/long	These must be populated if the system latitude and longitude attributes couldn't be populated.
Location (Manual) - longitude	Cond.	Lat/long	
Amendment reason	Cond.	String	Must not be populated when creating an event report. Must be populated when amending an existing event report, and must then contain at least 2 characters.
Event version	Cond.	Integer	Must not be populated when creating an event report. Must be populated when amending an existing event report. Must correspond to the current version number for the <i>event ID</i> , as recorded by the SDA.
Notes	N	String	
NFPS catches	Y	Array of NFPS Catch records	
Completer User ID	Y	String	
Completed date/time	Cond.	Date/time	Must be populated when creating an event report. Must not be populated when amending an existing event report.

NFPS Catch Records

The standalone NFPS report can contain *one* or *many* NFPS Catch records; it must contain at least one.

Attribute Name	Mand.	Data Type	Validation
NFPS species code	Y	String	Must be a valid NFPS species code.
Number uninjured	Cond.	Integer	At least one of these three values must be populated, and be greater than zero, for birds, mammals, reptiles and fish.
Number injured	Cond.	Integer	
Number dead	Cond.	Integer	
Estimated weight (kg)	Cond.	Decimal 2dp	Must be provided, and be greater than zero, for corals, sponges and bryozoans.
Seabird capture code	N	String	If provided, must be a valid seabird capture code.
Tags	N	Array of strings	

Schedule 4: Processing Reports

Attribute Name	Mand.	Data Type	Validation
Event ID	Y	GUID	Must be unique to the event being created or amended.
Trip ID	Y	String	
Client number	Y	String	Must be a valid client number.
Is vessel used?	Y	Boolean	Must be true.
Vessel number	Y	String	Must be a valid vessel registration number.
Processing date/time	Y	Date/time	
Notes	N	String	
Amendment reason	Cond.	String	Must not be populated when creating an event report. Must be populated when amending an existing event report, and must then contain at least 2 characters.
Event version	Cond.	Integer	Must not be populated when creating an event report. Must be populated when amending an existing event report. Must correspond to the current version number for the Event ID, as recorded by the SDA.
Products	Y	Array of product records	
Completer User ID	Y	String	
Completed date/time	Cond.	Date/time	Must be populated when creating an event report. Must not be populated when amending an existing event report.

Product Records

Each processing event report can contain *one* or *many* product records and must contain at least one.

Attribute Name	Mand.	Data Type	Validation
Product state code	Y	String	Must be a valid product state code.
Container type code	Y	String	Must be a valid container type code.
Estimated container weight (kg)	Y	Decimal 2dp	Must be greater than zero.
Container count	Y	Integer	Must be greater than zero.
Conversion factor	Cond.	Decimal 2dp	The conversion factor <i>must</i> be populated for all principal product states, other than LIV, MEA and GRE. It must not be populated if the product state is LIV, MEA, or GRE, or for any additional product states. If populated, the conversion factor must be the correct value for the given combination of species code, product state, and vessel number (in the case of vessel-specific conversion factors).
Species	Cond.	Array of species records	See below for validation details

Species Records

Each Product can contain *one* or *many* species records. If the product state code is MEA, LIV, or LIB there can be multiple Species records. For all other product states there must only be one species record.

Attribute Name	Mand.	Data Type	Validation
Species code	Y	String	Must be a valid species code.
Greenweight (kg)	Cond.	Decimal 2dp	Must be provided, and be greater than zero, for all principal product state codes.

Attribute Name	Mand.	Data Type	Validation
			Must not be populated for any additional product states.

Schedule 5: Disposal Reports

Attribute Name	Mand.	Data Type	Validation
Event ID	Y	GUID	Must be unique to the event being created or amended.
Trip ID	Y	String	
Client number	Y	String	Must be a valid client number.
Is vessel used?	Y	Boolean	
Vessel number	Cond.	String	Must be provided if <i>Is vessel used</i> is <i>true</i> . If so, must be a valid vessel registration number.
Disposal date/time	Y	Date/time	
Fish catch event ID	N	GUID	
At sea holding container ¹ location - latitude (System)	Cond.	Lat/long	At sea holding container location details must be provided (either system or manual) if the disposal report includes disposal codes P or H.
At sea holding container location - longitude (System)	Cond.	Lat/long	
At sea holding container location - latitude (Manual)	Cond.	Lat/long	
At sea holding container location - longitude (Manual)	Cond.	Lat/long	
Amendment reason	Cond.	String	Must not be populated when creating an event report. Must be populated when amending an existing event report, and must then contain at least 2 characters.
Event version	Cond.	Integer	Must not be populated when creating an event report. Must be populated when amending an existing event report. Must correspond to the current version number for the <i>event ID</i> , as recorded by the SDA.
Notes	N	String	
Stock disposals	Y	Array of stock disposal records	
Completer User ID	Y	String	
Completed date/time	Cond.	Date/time	Must be populated when creating an event report. Must not be populated when amending an existing event report.

Stock Disposal Records

Disposal reports can contain *one* or *many* stock disposal records. They must contain at least one stock disposal record.

Attribute Name	Mand.	Data Type	Validation
Stock code	Y	String	Must be a valid stock code.
Disposal code	Y	String	Must be a valid disposal code.
Estimate greenweight (kg)	Y	Decimal 2dp	Must be greater than zero.

¹ Please note that the SDA refers to *At Sea Holding Container Location* as *At Sea Holding Receptacle Location*.

Schedule 6: Landing Reports

Attribute Name	Mand.	Data Type	Validation
Event ID	Y	GUID	Must be unique to each event.
Trip ID	Y	String	
Client number	Y	String	Must be a valid client number.
Is vessel used?	Y	Boolean	
Vessel number	Cond.	String	Must be provided if <i>Is vessel used</i> is <i>true</i> . If so, must be a valid vessel registration number.
Landing date/time	Y	Date/time	
Amendment reason	Cond.	String	Must not be populated when creating an event report. Must be populated when amending an existing event report, and must then contain at least 2 characters.
Event Version	Cond.	Integer	Must not be populated when creating an event report. Must be populated when amending an existing event report. Must correspond to the current version number for the <i>event ID</i> , as recorded by the SDA.
Notes	N	String	
Landings	Y	Array of landing records	
Completer User ID	Y	String	
Completed date/time	Cond.	Date/time	Must be populated when creating an event report. Must not be populated when amending an existing event report.

Landing Records

Each Landing report can contain *one or many* Landing records; they must contain at least one.

Attribute Name	Mand.	Data Type	Validation
Landing code	Y	String	Must be a valid Landing Code.
LFR details received date/time	N	String	
LFR client number	Cond.	String	Must be populated if landing code is L, LR, Q, T, or EOY and <i>LFR details received date/time</i> is populated. Must be a valid client number. Must not be provided for any other landing codes.
Holding container ² location - latitude (System)	Cond.	Lat/long	Holding container location details must be populated if landing code is Q. This can either be a set of coordinates or an address. Must not be provided for any other landing codes.
Holding container location - longitude (System)	Cond.	Lat/long	
Holding container location - latitude (Manual)	Cond.	Lat/long	
Holding container location - longitude (Manual)	Cond.	Lat/long	
Holding container address	Cond.	String	
Tranship vessel number	Cond.	String	Must be populated if landing code is T or TT. Must be a valid vessel registration number. Must not be provided for any other landing codes.
Customary fishing document reference	Cond.	String	Must be populated if landing code is CS. Must not be provided for any other landing codes.

² Please note that the SDA refers to *Holding Container Location* as *Holding Receptacle Location*.

Attribute Name	Mand.	Data Type	Validation
Fish oil landed (litres)	N	Integer	If provided must be greater than zero.
Offal has been mealed	N	Boolean	
Landing-products	Y	Array of landing-product records	

Landing-Product Records

Each Landing record can contain *one or many* Landing-Product records; they must contain at least one.

Attribute Name	Mand.	Data Type	Validation
Product state code	Y	String	Must be a valid product state code.
Container type code	Y	String	Must be a valid container type code.
Estimated container weight (kg)	Y	Decimal 2dp	Must be greater than 0.
Container count	Y	Integer	Must be greater than 0.
Purchase order number	Cond.	String	Must be populated if <i>Landing Code</i> is L, LR, Q, T, or EOY and <i>LFR details received date/time</i> is populated. Must not be provided for any other landing codes. Optional for the above codes when <i>LFR details received date/time</i> is not populated.
Stocks	Cond.	Array of stock records	

Stock Records

Each landing-product record can contain *one or many* stock records. If the landing-product record has a product state code of MEA, LIV, or LIB it can have multiple stock records, otherwise it must only have one stock record.

Attribute Name	Mand.	Data Type	Validation
Stock code	Y	String	Must be a valid ERS Stock Code.
Greenweight (kg)	Cond.	Decimal 2dp	This must be provided, and be greater than zero, for all <i>principal</i> product states, except when landing code is L, LR, Q, T, or EOY and <i>LFR details received date/time</i> is not populated. It is optional for <i>principal</i> product states when landing code is L, LR, Q, T, or EOY and <i>LFR details received date/time</i> is not populated. Must never be populated for any <i>additional</i> product states.
Shark fins (kg)	Cond.	Decimal 2dp	This must be provided, and be greater than zero, when product state is SHF, except when landing code is L, LR, Q, T, or EOY and <i>LFR details received date/time</i> is not populated. It is optional for SHF, when landing code is L, LR, Q, T, or EOY and <i>LFR details received date/time</i> is not populated. Must not be provided for any other product states.