



**Fisheries New Zealand**

Tini a Tangaroa

# **Fisheries (E-logbook Technical Specifications) Circular 2018**

## Issuing Authority

This circular is issued pursuant to regulation 47 of the Fisheries (Reporting) Regulations 2017 and having undertaken consultation in accordance with regulation 47(2) of those Regulations.

Dated at Wellington this 10<sup>th</sup> day of May 2018.

[signed]

Martyn Dunne  
Chief Executive  
Ministry for Primary Industries

## Introduction

*This introduction is not part of the circular itself, but provides the background and broad purpose of the circular.*

This circular provides technical requirements for the e-logbooks to be used by commercial fishing permit holders to complete Electronic Reporting. It is intended to provide the developers of those e-logbooks with the legal requirements.

This circular comes into force on 1 July 2018. It replaces and revokes the Fisheries (E-logbook Technical Specifications) Circular 2017, which came into force on 1 October 2017.

The Fisheries (Reporting) Regulations 2017 set new requirements for commercial fishers to provide the Chief Executive of the Ministry for Primary Industries with Electronic Reporting relating to fish catches, catches of non-fish and protected fish species, processing, disposal, and landing.

This circular prescribes exactly what information must be provided, and how that information is to be transmitted to the Chief Executive. A key purpose of this circular is to provide developers of e-logbooks with the detail they need to design e-logbooks that will meet FNZ's requirements and the needs of permit holders.

The codes to be used when completing e-logbooks, and instructions on how to complete the different types of reports, are set out in the Fisheries (E-logbook Users Instructions and Codes) Circular 2018.

<b>Contents</b>		<b>Page</b>
1	Title	4
2	Commencement	4
3	Purpose	4
4	Application	4
5	Definitions	4
<b>Part 1:</b>	<b>E-logbooks</b>	<b>5</b>
6	Use of e-logbooks	5
7	E-logbooks to produce reports and records	5
8	Reports and records to have various states	5
9	Authentication of authorised users	7
10	Declarations	7
11	Summaries	8
12	Transmission	8
13	Security of transmission	8
14	Integrity and non-repudiation of data	8
15	Storing data	8
16	Robustness of system	8
17	Devices	9
18	Business continuity	9
19	Authoritative record	9
20	Connectivity check	9
<b>Part 2:</b>	<b>Event reports and trip records</b>	<b>9</b>
21	Trip records	9
22	Content of event reports	9
23	Column headed "Mand."	9
24	Column headed "Data Type"	9
25	Column headed "Validation"	10
26	Completed date/time	10
27	Revocation	10
<b>Schedule 1 – Trip Record requirements</b>		<b>11</b>
Part 1A:	Trip start record requirements	11
Part 1B:	Trip end record requirements	12
<b>Schedule 2: Fish Catch Report requirements</b>		<b>13</b>
Part 2A:	Trawl	13
Part 2B:	Netting	14
Part 2C:	Lining	15
Part 2D:	Potting	16
Part 2E:	Diving	17
Part 2F:	Seining	18
Part 2G:	Hand-Gathering	19
Part 2H:	Dredging	20
Part 2I:	Other-Lining	21
Part 2J:	Tuna-Lining	22
Part 2K:	Squid jigging	24
<b>Schedule 3: NFPS Report requirements</b>		<b>25</b>
<b>Schedule 4: Processing Report requirements</b>		<b>26</b>
<b>Schedule 5: Disposal Report requirements</b>		<b>27</b>

**Schedule 6: Landing Report requirements**

28

**1 Title**

- (1) This circular is the Fisheries (E-logbook Technical Specifications) Circular for Commercial Fishing.

**2 Commencement**

- (1) Unless subclauses (2) or (3) apply, this circular comes into force on 1 July 2018.
- (2) On and from 1 July 2018 until the close of 30 September 2018, all persons using a vessel with an overall length that exceeds 28m and is being used in fishing with a trawl net may continue to comply with the former circular.
- (3) Where a person using a vessel, other than a vessel referred to in subclause (2), has commenced, but not completed a fishing trip when this circular comes into force, there is no need to comply with this circular until the commencement of the subsequent fishing trip.

**3 Purpose**

- (1) The purpose of this circular is—
- a) to set out the requirements of the electronic reporting system (in this circular referred to as an e-logbook) used by a permit holder when providing event reports; and
  - b) to specify the manner and form of event reports and additional information.

**4 Application**

- (1) This circular applies to all reports (including additional information such as trip records) that are to be provided by permit holders to the chief executive in accordance with the Fisheries (Reporting) Regulations 2017.
- (2) This circular applies to all permit holders (unless an applicable exemption, issued under regulation 46 of the Fisheries (Reporting) Regulations 2017, applies).

**5 Definitions**

- (1) In this circular—

**Act** means the Fisheries Act 1996

**authorised user** means a person who is registered with the SDA as an authorised user in relation to—

- a) one or more specified permit holders; and
- b) one or more specified e-logbooks

**declared protected fish species** refers to all protected fish species listed in the Fisheries (E-logbook Users Instructions and Codes) Circular 2018

**e-logbook** means an electronic system used by a permit holder to create event reports and trip records and transmit them to the chief executive

**former circular** means the Fisheries (E-logbook Technical Specifications) Circular 2017, issued on 15 September 2017

**FNZ** means Fisheries New Zealand

**record** means a trip start record or a trip end record, as set out in Schedule 1

**report** means an event report of a type set out in Schedule 2, 3, 4, 5, or 6, namely:

- a) fish catch reports:
- b) non-fish species or protected species catch reports (NFPS reports):
- c) processing reports:

- d) disposal reports:
- e) landing reports

**MPI** means the Ministry for Primary Industries

**NFPS** means non-fish or protected species

**Regulations** means the Fisheries (Reporting) Regulations 2017

**SDA** means the service delivery agency that provides operational support to the commercial fishing industry under contract to MPI, and that receives reports and records from permit holders for further transmission to the chief executive following validation. (As at the date this circular comes into force, the SDA is Commercial Fisheries Services Ltd, operating as FishServe.)

**specified non-fish species** refers to NFPS listed in the Fisheries (E-logbook Users Instructions and Codes) Circular 2018

**Trip ID** means a number or other type of identification that identifies a particular fishing trip.

- (2) Any term that is defined in the Act or Regulations and used but not defined in this circular has the meaning set out in the Act or Regulations. (Key terms defined in the Regulations include: **permit holder** and **fishing trip** or **trip**.)

## Part 1: E-logbooks

### 6 Use of e-logbooks

- (1) Every permit holder who is required by the Regulations to provide a report to the chief executive must do so using an e-logbook that—
  - a) complies with this circular; and
  - b) is registered with the SDA as being in use by the permit holder.
- (2) The e-logbook may comprise any number of components as long as the system as a whole complies with all of the requirements of this circular.

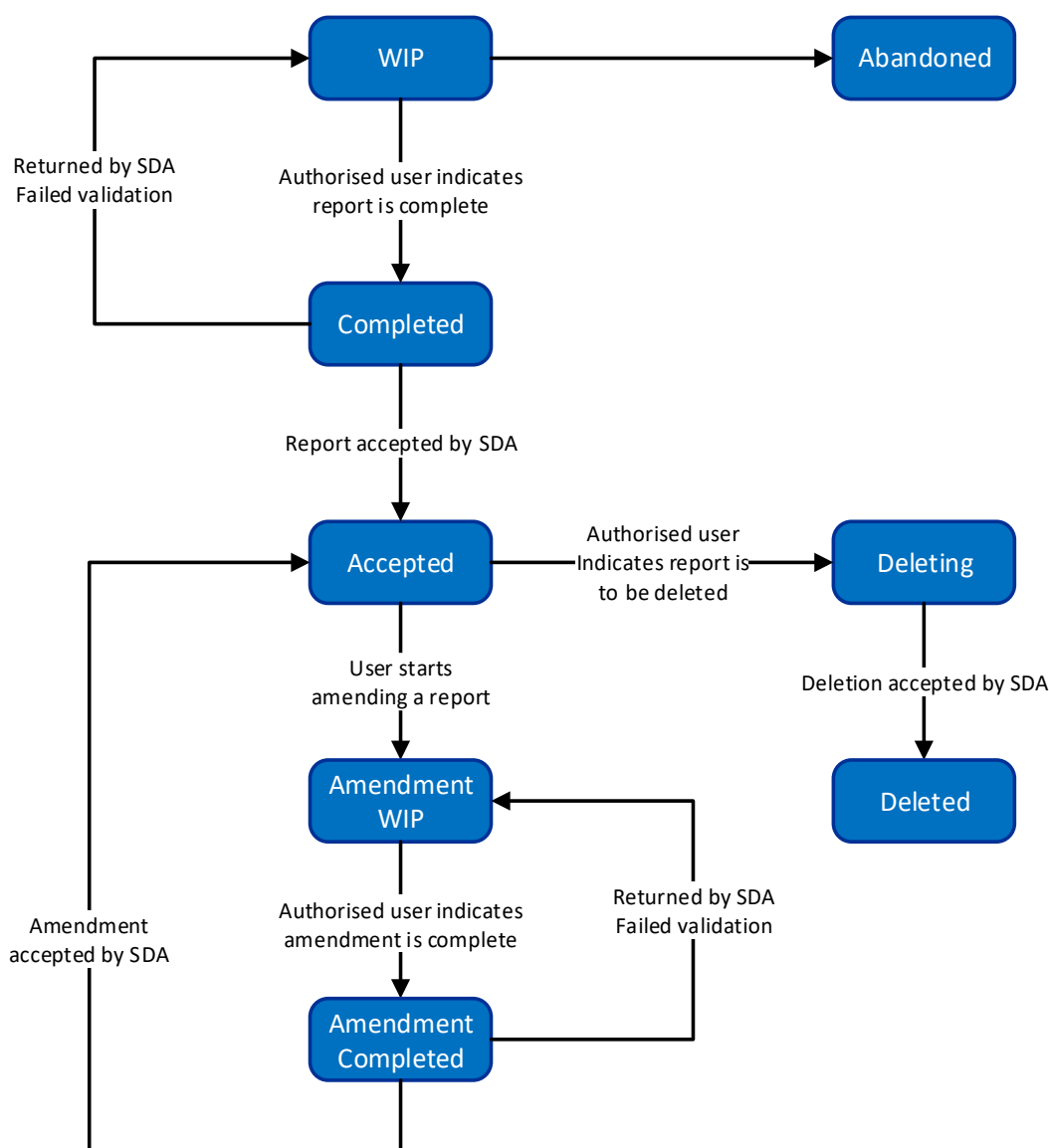
### 7 E-logbooks to produce reports and records

- (1) Every e-logbook must produce reports and records that—
  - a) comply with the requirements set out in the Schedules for reports and records of different types; and
  - b) accept as codes, only those codes that are listed in the Fisheries (E-logbook Users Instructions and Codes) Circular 2018; and
  - c) give a unique identifier to each new event for which a report is generated and each new trip for which a new record is generated; and
  - d) record the current type and state of every report and record.
- (2) No part of an e-logbook may display the MPI or FNZ logo, or the crest of the New Zealand government.

### 8 Reports and records to have various states

- (1) E-logbooks must provide for reports and records to exist in one of 8 states, as follows:
  - a) WIP (work in progress) – which means the report or record can be edited or deleted using the e-logbook:
  - b) Completed – which means the report or record has been signed off as Completed by a relevant authorised user and can no longer be edited using the e-logbook:
  - c) Accepted – which means that a Completed or Amendment Completed report or record has passed SDA validation and can no longer be edited using the e-logbook:
  - d) Amendment WIP – which means that a report or record that was Accepted has been changed to a state in which it can be amended by the user:

- e) Amendment Completed – which means that a report or record in the Amendment WIP state has been signed off as complete by an authorised user and can no longer be edited using the e-logbook:
  - f) Deleting – which means that a report or record that was Accepted has been marked as deleted by an authorised user:
  - g) Deleted – which means that a report or record with the state Deleting has been accepted by the SDA as deleted:
  - h) Abandoned – which means a WIP report that is abandoned before it is completed.
- (2) E-logbooks need not use the names or titles of the states listed in subclause (1), and may use additional states, as long as the e-logbook can achieve a result that is consistent with this clause.
- (3) E-logbooks must enable the following processes:
- a) when a new report or record is opened, it remains as WIP until an authorised user changes the state to Completed, or it is Abandoned without being completed:
  - b) a WIP or Amendment WIP report or record can only be changed to Completed or Amendment Completed by a relevant authorised user:
  - c) only Completed, Amendment Completed, and Deleting reports and records can be transmitted to the SDA:
  - d) if a Completed or Amendment Completed report or record passes SDA validation, the state of the report or record in the e-logbook must change to Accepted:
  - e) if a Completed or Amendment Completed report or record does not pass SDA validation, it must be returned to WIP or Amendment WIP (as appropriate) for correction:
  - f) an Accepted report or record can be changed to Deleting only by a relevant authorised user:
  - g) a Deleting report or record can be changed to Deleted only when the SDA accepts the deletion.
- (4) The states, and some of the possible transitions between them, are summarised below. (If there is any conflict between the diagram and the rest of this clause, the rest of this clause prevails.)



## 9 Authentication of authorised users

- (1) E-logbooks must authenticate (by, for instance, the use of passwords, pin-numbers, or tokens) the identity of a person who claims to be a relevant authorised user, before the person can make a declaration referred to in clause 10.
- (2) An e-logbook must not allow or enable a user to have access to authentication credentials.

## 10 Declarations

- (1) E-logbooks must require that a declaration is completed before the status of a report or record is changed from WIP to Completed or from Amendment WIP to Amendment Completed.
- (2) The declaration in clause 10(1) above must be to the following effect:
  - a) that the declaration is made by a relevant authorised user; and
  - b) the relevant authorised user is satisfied that the report or record is complete and correct in all respects.
- (3) E-logbooks must require that a declaration is completed before the status of a report or record is changed from Accepted to Deleting.
- (4) The declaration in clause 10(3) above must be to the following effect:
  - a) that the declaration is made by a relevant authorised user; and

- b) the relevant authorised user is satisfied that there are good grounds for deleting the report or record.

## 11 Summaries

- (1) Every e-logbook must be able to generate summaries of reports and records.
- (2) Every summary must, at a minimum,—
  - a) allow drilling-down so that every field in any report or record (of whatever type or state) can be accessed via the summary; and
  - b) allow for reports and records to be displayed in reverse date order; and
  - c) allow users to filter event reports by—
    - i) type (eg, fish catch report, disposal report); and
    - ii) state (eg, WIP or Completed); and
    - iii) date, which must be a date of relevance to the particular report or record (eg, tow start date, completion of report).
- (3) Every summary must be able to be accessed by fisheries officers and observers.
- (4) A device used to display a summary, and the reports and records accessible via it, must display all the reports' and records' fields in a readable format.

## 12 Transmission

- (1) Every e-logbook must be capable of transmitting reports and records—
  - a) to the SDA; and
  - b) in such a way that the SDA is able to receive them; and
  - c) within the times required by the Regulations.

## 13 Security of transmission

- (1) Every e-logbook must be designed and operated to ensure that data contained in any report or record sent from a permit holder to the SDA cannot be changed by any third party.
- (2) Every e-logbook must ensure that reports and records transmitted between the permit holder and the SDA are encrypted during transmission.

## 14 Integrity and non-repudiation of data

- (1) E-logbooks must ensure the integrity and non-repudiation of data contained in reports and records, and for that purpose must provide that —
  - a) every report and record is digitally signed, using a valid digital signature, by the e-logbook when the state of the report or record is changed from WIP to Completed, or from Amendment WIP to Amendment Completed; and
  - b) when the report or record is provided to the SDA, the digital signature is included.

## 15 Storing data

- (1) Every e-logbook must save data, as it is entered, in such a way that it can be recovered if power is cut or the system is turned off.
- (2) Every e-logbook must store every report and record (including reports and records that are WIP, Amended WIP, Deleted, or Abandoned) in its most recent state for a minimum of 90 days.

## 16 Robustness of system

- (1) Every e-logbook must be designed and put together so that it operates reliably in the particular commercial fishing environment in which it is intended to operate.
- (2) Every e-logbook must be capable of having fields completed while the system is off-line.



## 17 Devices

- (1) Each physical component of an e-logbook system must be suitable for use in the particular commercial fishing environment in which that component is intended to operate.

## 18 Business continuity

- (1) Every e-logbook must have a business continuity plan associated with it to provide for what happens if the e-logbook is unable to produce reports and records, or transmit them, as required by the Regulations and this circular.

## 19 Authoritative record

- (1) The most recent report or record that is accepted by the SDA is the authoritative record of that version of the report or record.

## 20 Connectivity check

- (1) Every e-logbook must provide a connectivity-check mechanism that allows authorised users to send a test message to the SDA, in order to confirm connectivity, authentication and authorisation.
- (2) This mechanism must also indicate to the authorised user whether the connectivity-check message was received and accepted by the SDA or not. If it was received and accepted by the SDA it confirms to the user that there is connectivity, that the digital signature is correct, and that the user is authorised to submit for the given permit holder.

## Part 2: Event reports and trip records

### 21 Trip records

- (1) E-logbooks must ensure that a Trip ID cannot be entered in a report unless a trip start record for a trip with the same Trip ID has been completed.

### 22 Content of event reports

- (1) Each type of report must comply with the requirements relating to that type of report that are set out in the Schedules.

### 23 Column headed “Mand.”

- (1) In the Schedules, the column headed “Mand.” indicates whether an attribute is mandatory or not.
- (2) If an attribute that is indicated as mandatory (“Y”) is missing or has a null value, the event report will not be accepted by the SDA.
- (3) If an attribute is indicated as conditional (“Cond”), it indicates that the attribute may become mandatory, depending on the value of another attribute.

### 24 Column headed “Data Type”

- (1) In the Schedules, the column headed “Data Type” indicates the kind of data that must be used to complete that field.
- (2) The reference to “GUID” means that a globally unique identifier is required. This must be in the form of a 36-character string representing the hexadecimal form of a 128 bit integer (eg, 2226a625-af1c-4a94-a103-42514028684d).
- (3) The reference to “date/time” means a date and time value. This must be in 24-hour date and time values with the UTC offset, as in YYYY-MM-DDThh:mm:ssTZD, where TZD is the time zone designator (+hh:mm or -hh:mm). For example, “2017-11-04T12:30:00+13:00” means the local time was 12.30 pm on 4 November 2017 and the time zone was 13 hours ahead of UTC.

- (4) The reference to lat/long means that a position reference giving latitude and longitude is required. These must be WGS84 coordinates provided as decimal degrees, with polarity indicating the hemisphere. This must be given as decimal values with a minimum of 4 decimal places for system positions and 3 decimal places for manual positions, and must be validated by the e-logbook—
- for latitude, to between -90 degrees and 90 degrees; and
  - for longitude, to between -180 degrees and 180 degrees.

- (5) The reference to “Geolocation Set” means the following set of attributes:

Attribute Name	Mand.	Data Type	Validation
System date/time	Y	Date/time	
System latitude	Cond.	Lat/Long	Must be provided unless the <i>manual</i> latitude and longitude attributes are being provided, e.g. in the case of a malfunction.
System longitude	Cond.	Lat/Long	
Manual date/time	N	Date/time	
Manual latitude	Cond.	Lat/Long	Must be provided if the <i>system</i> latitude and longitude attributes couldn't be populated.
Manual longitude	Cond.	Lat/Long	

- (6) The reference to “Basic Geolocation Set” means the following set of attributes:

Attribute Name	Mand.	Data Type	Validation
System latitude	Cond.	Lat/Long	Must be provided unless the <i>manual</i> latitude and longitude attributes are being provided, e.g. in the case of a malfunction.
System longitude	Cond.	Lat/Long	
Manual latitude	Cond.	Lat/Long	Must be provided if the <i>system</i> latitude and longitude attributes couldn't be populated.
Manual longitude	Cond.	Lat/Long	

- (7) Other terms used in this column have the following meanings:

**integer** means a whole number

**string** means a sequence of characters (which can be numeric, alphabetic, or special characters)

**user token** means a security token of some kind that the e-logbook automatically includes in a report or record when an authorised user completes a declaration.

## 25 Column headed “Validation”

- (1) In the Schedules, the column headed “Validation” sets out the validation that the SDA must carry out before a report will be accepted.

## 26 Completed date/time

- (1) The attribute “Completed Date/time” must be populated by the system when a WIP report or record is changed to Completed.
- (2) The date/time inserted must not be capable of being overridden by the user or reset by the e-logbook.

## 27 Revocation

- (1) Subject to clause 2, the Fisheries (E-logbook Technical Specifications) Circular 2017, issued on 15 September 2017, is revoked.

## Schedule 1 – Trip Record requirements

### Part 1A: Trip start record requirements

Attribute Name	Mand.	Data Type	Validation
Event ID	Y	GUID	Must be unique to the trip start record being created or amended.
Trip ID	Y	String	This <i>Trip ID</i> value must not already exist on another <i>Trip Start</i> record for the given Vessel Number, or for the given Client Number in the case of <i>Is Vessel Used</i> being <i>false</i> .
Client number	Y	String	Must be a valid Client Number.
Is vessel used?	Y	Boolean	
Vessel number	Cond.	String	Must be provided if <i>is vessel used</i> is true. If provided must be a valid vessel registration number.
Person in charge	Y	String	Must contain at least 2 characters.
Date/time and location	Y	Geolocation Set	
Amendment reason	Cond.	String	Must not be populated when creating a trip start record. Must be populated when amending an existing trip start record, and must then contain at least 2 characters.
Event version	Cond.	Integer	Must not be populated when creating a trip start record. Must be populated when amending an existing trip start record. Must correspond to the current version number for the <i>event ID</i> , as recorded by the SDA.
Notes	N	String	
Completer User ID	Y	String	
Completed date/time	Cond.	Date/time	Must be populated when creating a trip start record. Must not be populated when amending an existing trip start record.

## Part 1B: Trip end record requirements

Attribute Name	Mand	Data Type	Validation
Event ID	Y	GUID	Must be unique to the trip end record being created or amended.
Trip ID	Y	String	This <i>trip ID</i> value must not exist on another trip end record for the given vessel number, or for the given client number in the case of <i>is vessel used?</i> being false.
Client number	Y	String	Must be a valid client number.
Is vessel used?	Y	Boolean	
Vessel number	Cond.	String	Must be provided if <i>is vessel used?</i> is true. If provided, must be a valid vessel registration number.
Person in charge	Y	String	Must contain at least 2 characters.
Date/time and location	Y	Geolocation Set	
Amendment reason	Cond.	String	Must not be populated when creating a trip end record. Must be populated when amending an existing trip end record, and must then contain at least 2 characters.
Event version	Cond.	Integer	Must not be populated when creating a trip end record. Must be populated when amending an existing trip end record. Must correspond to the current version number for the Event ID, as recorded by the SDA.
Notes	N	String	
Completer User ID	Y	String	
Completed date/time	Cond.	Date/time	Must be populated when creating a trip end record. Must not be populated when amending an existing trip end record.

## Schedule 2: Fish Catch Report requirements

### Part 2A: Trawl

Attribute Name	Mand.	Data Type	Validation
Event ID	Y	GUID	Must be unique to the event being created or amended.
Trip ID	Y	String	
Client number	Y	String	Must be a valid client number.
Fishing under a High Seas Permit?	N	Boolean	
Is vessel used?	Y	Boolean	Must be <i>true</i> .
Vessel number	Y	String	Must be a valid vessel registration number.
Fishing method code	Y	String	Must be a valid Trawl method code.
Target species code	Y	String	Must be a valid species code.
Mitigation device codes	N	Array of Strings	Must be valid mitigation device codes.
Number of nets	Y	Integer	Must be greater than zero.
Vessel pair number	N	String	If provided must be a valid vessel registration number.
Wing spread (m)	Y	Integer	Must be greater than zero.
Headline height (m)	Y	Decimal 2dp	Must be greater than zero.
Codend mesh size (mm)	Y	Integer	Must be greater than or equal to zero.
Ground rope depth (m)	Y	Integer	Must be greater than zero.
Bottom depth (m)	Y	Integer	Must be greater than zero.
Speed knots	Y	Decimal 2dp	Must be greater than zero.
Is net lost?	Cond.	Boolean	Must be <i>true</i> if the <i>Finish</i> date/time and location details could not be populated.
Start date/time and location	Y	Geolocation Set	
Finish date/time and location	Cond	Geolocation Set	Required unless <i>Is net lost?</i> is <i>true</i> .
Total estimated catch (kg)	Y	Decimal 2dp	Must be greater than or equal to zero.
Catches	Cond.	Array of catch records	See below for validation details.
Is NFPS catch present?	Y	Boolean	
Amendment reason	Cond.	String	Must not be populated when creating an event report. Must be populated when amending an existing event report, and must then contain at least 2 characters.
Event version	Cond.	Integer	Must not be populated when creating an event report. Must be populated when amending an existing event report. Must correspond to the current version number for the <i>event ID</i> , as recorded by the SDA.
Notes	N	String	
Completer User ID	Y	String	
Completed date/time	Cond.	Date/time	Must be populated when creating an event report. Must not be populated when amending an existing event report.

### Catch Records

The trawl report can contain *zero* or *many* Catch records. If *Total Estimated Catch Kg* is greater than zero then at least *one* Catch record must be provided.

Attribute Name	Mand.	Data Type	Validation
Species code	Y	String	Must be a valid species code.
Greenweight estimate (kg)	Y	Decimal 2dp	Must be greater than or equal to zero.

## Part 2B: Netting

Attribute Name	Mand.	Data Type	Validation
Event ID	Y	GUID	Must be unique to the event being created or amended.
Client number	Y	String	Must be a valid client number.
Is vessel used?	Y	Boolean	
Vessel number	Cond.	String	Must be provided if <i>Is Vessel Used</i> is true. If so, must be a valid vessel registration number.
Fishing method code	Y	String	Must be a valid Netting method code.
Target species code	Y	String	Must be a valid species code.
Mitigation device codes	N	Array of Strings	Must be valid mitigation device codes.
Number of nets	Y	Integer	Must be greater than zero.
Total length of nets (m)	Y	Decimal 2dp	Must be greater than zero.
Min mesh size (mm)	Y	Integer	Must be greater than zero.
Net height	Y	Integer	Must be greater than zero.
Is net lost?	Cond.	Boolean	Must be <i>true</i> if the <i>End Of Set</i> or <i>Finish</i> date/time and location details could not be populated. Must be <i>true</i> if the <i>Start of Haul</i> date/time and location details could not be populated and the method is SN or PSN.
Start date/time and location	Y	Geolocation Set	
End of Set date/time and location	Cond	Geolocation Set	Required unless <i>Is net lost?</i> is <i>true</i> .
Start of Haul date/time and location	Cond	Geolocation Set	Required if method is SN or PSN, unless <i>Is net lost?</i> is <i>true</i> .
Finish date/time and location	Cond	Geolocation Set	Required unless <i>Is net lost?</i> is <i>true</i> .
Trip ID	Y	String	
Catches	N	Array of Catch records	
Estimated greenweight of all other species (kg)	N	Decimal 2dp	If provided must be greater than or equal to zero.
Is NFPS catch present?	Y	Boolean	
Amendment reason	Cond.	String	Must not be populated when creating an event report. Must be populated when amending an existing event report.
Event version	Cond.	Integer	Must not be populated when creating an event report. Must be populated when amending an existing event report. Must correspond to the current version number for the Event ID, as recorded by the SDA.
Notes	N	String	
Completed User ID	Y	User Token	
Completed date/time	Cond.	Date/time	Must be populated when creating an event report. Must not be populated when amending an existing event report.

### Catch Records

The netting report can contain zero or many Catch records.

Attribute Name	Mand.	Data Type	Validation
Species code	Y	String	Must be a valid species code.
Greenweight estimate (kg)	Y	Decimal 2dp	Must be greater than or equal to zero.

## Part 2C: Lining

Attribute Name	Mand.	Data Type	Validation
Event ID	Y	GUID	Must be unique to the event being created or amended.
Trip ID	Y	String	
Client number	Y	String	Must be a valid Client number.
Fishing under a High Seas Permit?	N	Boolean	
Is vessel used?	Y	Boolean	Must be <i>true</i> .
Vessel number	Y	String	Must be a valid vessel registration number.
Fishing method code	Y	String	Must be a valid Lining method code.
Autolining?	Cond.	Boolean	Must be populated if method is BLL, otherwise optional.
Target species code	Y	String	Must be a valid species code.
Mitigation device codes	N	Array of Strings	Must be valid mitigation device codes.
Hook space (m)	Y	Decimal 2dp	Must be greater than zero.
Number of hooks	Y	Integer	Must be greater than zero.
Bottom depth (m)	Y	Integer	Must be greater than zero.
Is line lost?	Cond.	Boolean	Must be <i>true</i> if <i>End Of Set</i> or <i>Start Of Haul</i> location and date/time details could not be populated and method is not DL. Must be <i>true</i> if <i>Finish</i> location and date/time details could not be populated.
Number of lines hauled	Cond.	Integer	Must be provided if method is DL.
Start date/time and location	Y	Geolocation Set	
End of Set date/time and location	Cond	Geolocation Set	Required if method is BLL or TL, unless <i>Is line lost?</i> is <i>true</i> .
Start of Haul date/time and location	Cond	Geolocation Set	Required if method is BLL or TL, unless <i>Is line lost?</i> is <i>true</i> .
Finish date/time and location	Cond	Geolocation Set	Required unless <i>Is line lost?</i> is <i>true</i> .
Catches	N	Array of Catch records	
Estimated greenweight of all other species (kg)	N	Decimal 2dp	If provided must be greater than or equal to zero.
Is NFPS catch present?	Y	Boolean	
Amendment reason	Cond.	String	Must not be populated when creating an event report. Must be populated when amending an existing event report.
Event version	Cond.	Integer	Must not be populated when creating an event report. Must be populated when amending an existing event report. Must correspond to the current version number for the Event ID, as recorded by the SDA.
Notes	N	String	
Completed User ID	Y	User Token	
Completed date/time	Cond.	Date/time	Must be populated when creating an event report. Must not be populated when amending an existing event report.

### Catch Records

The lining report can contain zero or many Catch records.

Attribute Name	Mand.	Data Type	Validation
Species code	Y	String	Must be a valid species code.
Greenweight estimate (kg)	Y	Decimal 2dp	Must be greater than or equal to zero.

## Part 2D: Potting

Attribute Name	Mand.	Data Type	Validation
Event ID	Y	GUID	Must be unique to the event being created or amended.
Trip ID	Y	String	
Client number	Y	String	Must be a valid Client number.
Is vessel used?	Y	Boolean	
Vessel number	Cond.	String	Must be provided if <i>Is Vessel Used</i> is <i>true</i> . If so, must be a valid vessel registration number.
Fishing method code	Y	String	Must be a valid Potting method code.
Target species code	Y	String	Must be a valid species code.
Number of lifts	Y	Integer	Greater than or equal to zero.
Soak time hours	Y	Integer	Greater than or equal to zero.
Fyke nets baited?	Cond.	Boolean	Must be populated if method is FN or EFN, otherwise must not be populated.
Start date/time and location	Y	Geolocation Set	
Finish date/time and location	Y	Geolocation Set	
Catches	N	Array of Catch records	
Is NFPS catch present?	Y	Boolean	
Amendment reason	Cond.	String	Must not be populated when creating an event report. Must be populated when amending an existing event report.
Event version	Cond.	Integer	Must not be populated when creating an event report. Must be populated when amending an existing event report. Must correspond to the current version number for the Event ID, as recorded by the SDA.
Notes	N	String	
Completed User ID	Y	User Token	
Completed date/time	Cond.	Date/time	Must be populated when creating an event report. Must not be populated when amending an existing event report.

### Catch Records

The potting report can contain zero or many Catch records.

Attribute Name	Mand.	Data Type	Validation
Species code	Y	String	Must be a valid species code.
Greenweight estimate (kg)	Y	Decimal 2dp	Must be greater than or equal to zero.



## Part 2E: Diving

Attribute Name	Mand.	Data Type	Validation
Event ID	Y	GUID	Must be unique to the event being created or amended.
Trip ID	Y	String	
Client number	Y	String	Must be a valid Client number.
Is vessel used?	Y	Boolean	
Vessel number	Cond.	String	Must be provided if <i>Is Vessel Used</i> is true. If so, must be a valid vessel registration number.
Fishing method code	Y	String	Must be a valid Diving method code.
Target species code	Y	String	Must be a valid species code.
Swell (m)	Y	Decimal 2dp	Must be greater than or equal to zero.
Visibility (m)	Y	Integer	Must be greater than or equal to zero.
Was boat person used?	Cond.	Boolean	Must be provided if <i>Target Species Code</i> is PAU, PAA or PAI.
Is NFPS Catch present?	Y	Boolean	
Divers	Y	Array of Diver Records	
Amendment reason	Cond.	String	Must not be populated when creating an event report. Must be populated when amending an existing event report.
Event version	Cond.	Integer	Must not be populated when creating an event report. Must be populated when amending an existing event report. Must correspond to the current version number for the Event ID, as recorded by the SDA.
Notes	N	String	
Completed User ID	Y	User Token	
Completed date/time	Cond.	Date/time	Must be populated when creating an event report. Must not be populated when amending an existing event report.

### Diver Records

The diving fish catch report may include *one* or *many* Diver records in the Diver array; it must include at least one Diver record.

Attribute Name	Mand.	Data Type	Validation
Diver ID or Name	Y	String	
Total diving time hours	Y	Integer	Must be greater than, or equal to, zero.
Total diving time minutes	Y	Integer	Must be between 0 and 59, inclusive.
UBA tank type	Cond.	String	Must be populated if method is UBA. Must be either "A" (for aluminium) or "S" (for steel). Must not be populated if method is not UBA.
Start date/time and location	Y	Geolocation Set	
Finish date/time and location	Y	Geolocation Set	
Diver catches	N	Array of diver catch records.	

### Diver Catch Records

Each diver's catch must be reported in the Diver Catch Array under that diver record. A given Diver can have *zero* or *many* Diver Catch records.

Attribute Name	Mand.	Data Type	Validation
Species code	Y	String	Must be a valid species code, other than "PAU".
Estimated catch (kg)	Y	Decimal 2dp	Must be greater than zero.

## Part 2F: Seining

Attribute Name	Mand.	Data Type	Validation
Event ID	Y	GUID	Must be unique to the event being created or amended.
Trip ID	Y	String	
Client number	Y	String	Must be a valid Client number.
Fishing under a High Seas Permit?	N	Boolean	
Is vessel used?	Y	Boolean	Must be <i>true</i> for methods DS, DPS, PS and L. Can be <i>true</i> or <i>false</i> for BS, DPN or SCN.
Vessel number	Cond.	String	Must be provided if <i>Is Vessel Used</i> is <i>true</i> . If so, must be a valid vessel registration number.
Fishing method code	Y	String	Must be a valid Seining method code.
Target species code	Y	String	Must be a valid species code.
Mitigation device codes	N	Array of Strings	Must be valid Mitigation Device Code(s).
Total net length and warps (m)	Cond.	Integer	Must be greater than zero for all seining methods other than DPN (Dip Net) and SCN (Scoop Net). Must not be provided for DPN or SCN.
Ground rope length (m)	Cond.	Integer	Must be greater than zero for Danish seining methods (DS and DPS). Must not be populated for other methods.
Is spotter used?	Cond.	Boolean	Must be provided for PS (Purse Seine). Must not be populated for other methods.
Spotter call sign	Cond.	String	Must be provided if <i>Is Spotter Used</i> is <i>true</i> .
Number of lifts	Cond.	Integer	Must be greater than zero for DPN (Dip Net) and SCN (Scoop Net). Must not be provided for other methods.
Start date/time and location	Y	Geolocation Set	
Finish date/time and location	Y	Geolocation Set	
Total estimated catch (kg)	Y	Decimal 2dp	Must be greater than or equal to zero.
Catches	N	Array of Catch records	
Is NFPS catch present?	Y	Boolean	
Amendment reason	Cond.	String	Must not be populated when creating an event report. Must be populated when amending an existing event report.
Event version	Cond.	Integer	Must not be populated when creating an event report. Must be populated when amending an existing event report. Must correspond to the current version number for the Event ID, as recorded by the SDA.
Notes	N	String	
Completed User ID	Y	User Token	
Completed date/time	Cond.	Date/time	Must be populated when creating an event report. Must not be populated when amending an existing event report.

### Catch Records

The seining report can contain zero or many Catch records. If *Total Estimated Catch (kg)* is greater than zero then at least one Catch record must be provided.

Attribute Name	Mand.	Data Type	Validation
Species code	Y	String	Must be a valid species code.
Greenweight estimate (kg)	Y	Decimal 2dp	Must be greater than or equal to zero.

## Part 2G: Hand-Gathering

Attribute Name	Mand.	Data Type	Validation
Event ID	Y	GUID	Must be unique to the event being created or amended.
Trip ID	Y	String	
Client number	Y	String	Must be a valid Client number.
Is vessel used?	Y	Boolean	
Vessel number	Cond.	String	Must be provided if <i>Is Vessel Used</i> is <i>true</i> . If so, must be a valid vessel registration number.
Fishing method code	Y	String	Must be "H".
Target species code	Y	String	Must be a valid species code.
Number of people	Y	Integer	Must be greater than zero.
Time spent hours	Y	Integer	Must be greater than zero.
Start date/time and location	Y	Geolocation Set	
Finish date/time and location	Y	Geolocation Set	
Catches	N	Array of Catch records	
Is NFPS catch present?	Y	Boolean	
Amendment reason	Cond.	String	Must not be populated when creating an event report. Must be populated when amending an existing event report.
Event version	Cond.	Integer	Must not be populated when creating an event report. Must be populated when amending an existing event report. Must correspond to the current version number for the Event ID, as recorded by the SDA.
Notes	N	String	
Completed User ID	Y	User Token	
Completed date/time	Cond.	Date/time	Must be populated when creating an event report. Must not be populated when amending an existing event report.

### Catch Records

The handgathering report can contain zero or many Catch records.

Attribute Name	Mand.	Data Type	Validation
Species code	Y	String	Must be a valid species code.
Greenweight estimate (kg)	Y	Decimal 2dp	Must be greater than or equal to zero.

## Part 2H: Dredging

Attribute Name	Mand.	Data Type	Validation
Event ID	Y	GUID	Must be unique to the event being created or amended.
Trip ID	Y	String	
Client number	Y	String	Must be a valid Client number.
Is vessel used?	Y	Boolean	Must be <i>true</i> for dredging (D), otherwise can be <i>true</i> or <i>false</i> .
Vessel number	Cond.	String	Must be provided if <i>Is Vessel Used</i> is <i>true</i> . If so, must be a valid vessel registration number.
Fishing method code	Y	String	Must be "D" or "MH".
Target species code	Y	String	Must be a valid species code.
Mitigation device used	N	Array of Strings	Must be valid mitigation device codes.
Dredge width (m)	Cond.	Decimal 2dp	Must be provided, and be greater than zero if the method is D.
Number of tows completed	Cond.	Integer	Must be provided, and be greater than zero if the method is D.
Number of devices used	Y	Integer	Must be greater than zero.
Start date/time and location	Y	Geolocation Set	
Finish date/time and location	Y	Geolocation Set	
Total estimated catch (kg)	Y	Decimal 2dp	Must be greater than or equal to zero.
Catches	N	Array of Catch records	
Is NFPS catch present?	Y	Boolean	
Amendment reason	Cond.	String	Must not be populated when creating an event report. Must be populated when amending an existing event report.
Event version	Cond.	Integer	Must not be populated when creating an event report. Must be populated when amending an existing event report. Must correspond to the current version number for the Event ID, as recorded by the SDA.
Notes	N	String	
Completed User ID	Y	User Token	
Completed date/time	Cond.	Date/time	Must be populated when creating an event report. Must not be populated when amending an existing event report.

### Catch Records

The dredging report can contain zero or many Catch records. If *Total Estimated Catch (kg)* is greater than zero then at least one Catch record must be provided.

Attribute Name	Mand.	Data Type	Validation
Species code	Y	String	Must be a valid species code.
Greenweight estimate (kg)	Y	Decimal 2dp	Must be greater than or equal to zero.

## Part 2I: Other-Lining

Attribute Name	Mand.	Data Type	Validation
Event ID	Y	GUID	Must be unique to the event being created or amended.
Trip ID	Y	String	
Client number	Y	String	Must be a valid Client number.
Fishing under a High Seas Permit?	N	Boolean	
Is vessel used?	Y	Boolean	Must be <i>true</i> for trolling (T), otherwise can be <i>true</i> or <i>false</i> .
Vessel number	Cond.	String	Must be provided if <i>Is Vessel Used</i> is <i>true</i> . If so, must be a valid vessel registration number.
Fishing method code	Y	String	Must be a valid Other-Lining method code.
Target species code	Y	String	Must be a valid species code.
Maximum number of lines used	Y	Integer	Greater than or equal to zero.
Maximum number of hooks used	Y	Integer	Greater than or equal to zero.
Start date/time and location	Y	Geolocation Set	
Finish date/time and location	Y	Geolocation Set	
Catches	N	Array of Catch records	
Is NFPS catch present?	Y	Boolean	
Amendment reason	Cond.	String	Must not be populated when creating an event report. Must be populated when amending an existing event report.
Event version	Cond.	Integer	Must not be populated when creating an event report. Must be populated when amending an existing event report. Must correspond to the current version number for the Event ID, as recorded by the SDA.
Notes	N	String	
Completed User ID	Y	User Token	
Completed date/time	Cond.	Date/time	Must be populated when creating an event report. Must not be populated when amending an existing event report.

### Catch Records

The other-lining report can contain *zero* or *many* Catch records.

Attribute Name	Mand.	Data Type	Validation
Species code	Y	String	Must be a valid species code.
Greenweight estimate (kg)	Y	Decimal 2dp	Must be greater than or equal to zero.
Number of fish	N	Integer	Must be greater than zero. Must be populated for trolling (T), otherwise must not be populated.

## Part 2J: Tuna-Lining

Attribute Name	Mand.	Data Type	Validation
Event ID	Y	GUID	Must be unique to the event being created or amended.
Trip ID	Y	String	
Client number	Y	String	Must be a valid Client number.
Fishing under a High Seas Permit?	N	Boolean	
Is vessel used?	Y	Boolean	Must be <i>true</i> .
Vessel number	Y	String	Must be a valid vessel registration number.
Fishing method code	Y	String	Must be "SLL".
Target species code	Y	String	Must be a valid species code.
Mitigation device codes	N	Array of Strings	Must be valid mitigation device codes.
Line length (Nm)	Y	Decimal 2dp	Greater than or equal to zero.
Number of hooks	Y	Integer	Greater than or equal to zero.
Number of floats	Y	Integer	Greater than or equal to zero.
Number of lightsticks	Y	Integer	Greater than or equal to zero.
Line shooter	Y	Boolean	
Bait type percent - Fish	Y	Decimal 2dp	Each of these values must be provided and must be greater than or equal to zero. They must total to 100.
Bait type percent - Squid	Y	Decimal 2dp	
Bait type percent - Other	Y	Decimal 2dp	
Bait type percent - Artificial	Y	Decimal 2dp	
Is line lost?	Cond.	Boolean	Must be <i>true</i> if <i>End Of Set</i> , <i>Start Of Haul</i> or <i>Finish date/time</i> and location details could not be populated.
Start date/time and location	Y	Geolocation Set	
End of Set date/time and location	Cond.	Geolocation Set	Required unless <i>Is line lost?</i> is <i>true</i> .
Start of Haul date/time and location	Cond.	Geolocation Set	Required unless <i>Is line lost?</i> is <i>true</i> .
Finish date/time and location	Cond.	Geolocation Set	Required unless <i>Is line lost?</i> is <i>true</i> .
Catches	N	Array of Catch records	
Disposal records	N	Array of Disposal records	
Is NFPS catch present?	Y	Boolean	
Amendment reason	Cond.	String	Must not be populated when creating an event report. Must be populated when amending an existing event report.
Event version	Cond.	Integer	Must not be populated when creating an event report. Must be populated when amending an existing event report. Must correspond to the current version number for the Event ID, as recorded by the SDA.
Notes	N	String	
Completed User ID	Y	User Token	
Completed date/time	Cond.	Date/time	Must be populated when creating an event report. Must not be populated when amending an existing event report.

## Catch Records

The tuna-lining report can contain zero or many Catch records.

Attribute Name	Mand.	Data Type	Validation
Species code	Y	String	Must be a valid species code.
Product state code	Y	String	Must be a valid product state code.
Processed weight (kg)	Y	Integer	Must be greater than zero.
Number of fish	Y	Integer	Must be greater than zero.

## Part 2K: Squid jigging

Attribute Name	Mand.	Data Type	Validation
Event ID	Y	GUID	Must be unique to the event being created or amended.
Trip ID	Y	String	
Client number	Y	String	Must be a valid Client number.
Is vessel used?	Y	Boolean	Must be <i>true</i> .
Vessel number	Y	String	Must be a valid vessel registration number.
Fishing method code	Y	String	Must be "SJ".
Target species code	Y	String	Must be a valid species code.
Mitigation device codes	N	Array of Strings	Must be valid mitigation device codes.
Deepest lure depth (m)	Y	Integer	Must be greater than zero.
Bottom depth (m)	Y	Integer	Must be greater than zero.
Number single reels	Y	Integer	Must be greater than or equal to zero.
Number double reels	Y	Integer	Must be greater than or equal to zero.
Start date/time and location	Y	Geolocation Set	
Finish date/time and location	Y	Geolocation Set	
Catches	N	Array of Catch records	
Is NFPS catch present?	Y	Boolean	
Amendment reason	Cond.	String	Must not be populated when creating an event report. Must be populated when amending an existing event report.
Event version	Cond.	Integer	Must not be populated when creating an event report. Must be populated when amending an existing event report. Must correspond to the current version number for the Event ID, as recorded by the SDA.
Notes	N	String	
Completed User ID	Y	User Token	
Completed date/time	Cond.	Date/time	Must be populated when creating an event report. Must not be populated when amending an existing event report.

### Catch Records

The jigging fish catch report can contain zero or many Catch records.

Attribute Name	Mand.	Data Type	Validation
Species code	Y	String	Must be a valid species code.
Greenweight estimate (kg)	Y	Decimal 2dp	Must be greater than or equal to zero.



## Schedule 3: NFPS Report requirements

Attribute Name	Mand.	Data Type	Validation
Event ID	Y	GUID	Must be unique to the event being created or amended.
Trip ID	Y	String	
Client number	Y	String	Must be a valid client number.
Is vessel used?	Y	Boolean	
Vessel number	Cond.	String	Must be provided if <i>Is vessel used</i> is true. Must be a valid vessel registration number.
NFPS catch date/time	Y	Date/time	
Fish catch event ID	N	GUID	
NFPS catch location	Cond.	Basic Geolocation Set	Must be populated unless <i>Fish catch event ID</i> is populated.
Amendment reason	Cond.	String	Must not be populated when creating an event report. Must be populated when amending an existing event report, and must then contain at least 2 characters.
Event version	Cond.	Integer	Must not be populated when creating an event report. Must be populated when amending an existing event report. Must correspond to the current version number for the <i>event ID</i> , as recorded by the SDA.
Notes	N	String	
NFPS catches	Y	Array of NFPS Catch records	
Completer User ID	Y	String	
Completed date/time	Cond.	Date/time	Must be populated when creating an event report. Must not be populated when amending an existing event report.

### NFPS Catch Records

The standalone NFPS report can contain *one* or *many* NFPS Catch records; it must contain at least one.

Attribute Name	Mand.	Data Type	Validation
NFPS species code	Y	String	Must be a valid NFPS species code.
Number uninjured	Cond.	Integer	At least one of these three values must be populated, and be greater than zero, for birds, mammals, reptiles and fish.
Number injured	Cond.	Integer	
Number dead	Cond.	Integer	
Estimated weight (kg)	Cond.	Decimal 2dp	Must be provided, and be greater than zero, for corals, sponges and bryozoans.
Seabird capture code	Cond.	String	If provided, must be a valid seabird capture code. Must not be provided if NFPS species code is not a type of bird.
Tags	N	Array of strings	

## Schedule 4: Processing Report requirements

Attribute Name	Mand.	Data Type	Validation
Event ID	Y	GUID	Must be unique to the event being created or amended.
Trip ID	Y	String	
Client number	Y	String	Must be a valid client number.
Is vessel used?	Y	Boolean	Must be true.
Vessel number	Y	String	Must be a valid vessel registration number.
Processing date/time	Y	Date/time	
Notes	N	String	
Amendment reason	Cond.	String	Must not be populated when creating an event report. Must be populated when amending an existing event report, and must then contain at least 2 characters.
Event version	Cond.	Integer	Must not be populated when creating an event report. Must be populated when amending an existing event report. Must correspond to the current version number for the Event ID, as recorded by the SDA.
Products	Y	Array of product records	
Completer User ID	Y	String	
Completed date/time	Cond.	Date/time	Must be populated when creating an event report. Must not be populated when amending an existing event report.

### Product Records

Each processing event report can contain *one* or *many* product records and must contain at least one.

Attribute Name	Mand.	Data Type	Validation
Product state code	Y	String	Must be a valid product state code.
Container type code	Y	String	Must be a valid container type code.
Estimated container weight (kg)	Y	Decimal 2dp	Must be greater than zero.
Container count	Y	Integer	Must be greater than zero.
Conversion factor	Cond.	Decimal 2dp	The conversion factor <i>must</i> be populated for all <i>principal</i> product states, other than LIV, MEA and GRE. It must not be populated if the product state is LIV, MEA, or GRE, or for any <i>additional</i> product states. If populated, the conversion factor must be the correct value for the given combination of species code, product state, and vessel number (in the case of vessel-specific conversion factors).
Species	Cond.	Array of species records	See below for validation details

### Species Records

Each Product can contain *one* or *many* species records. If the product state code is MEA, LIV, or LIB there can be multiple Species records. For all other product states there must only be one species record.

Attribute Name	Mand.	Data Type	Validation
Species code	Y	String	Must be a valid species code.
Greenweight (kg)	Cond.	Decimal 2dp	Must be provided, and be greater than zero, for all <i>principal</i> product state codes. Must not be populated for any <i>additional</i> product states.

## Schedule 5: Disposal Report requirements

Attribute Name	Mand.	Data Type	Validation
Event ID	Y	GUID	Must be unique to the event being created or amended.
Trip ID	Y	String	
Client number	Y	String	Must be a valid client number.
Is vessel used?	Y	Boolean	
Vessel number	Cond.	String	Must be provided if <i>Is vessel used</i> is <i>true</i> . If so, must be a valid vessel registration number.
Disposal date/time	Y	Date/time	
Fish catch event ID	N	GUID	
At sea holding container <sup>1</sup> location	Cond.	Basic Geolocation Set	At sea holding container location details must be provided (either system or manual) if the disposal report includes disposal codes P, HW or N.
Amendment reason	Cond.	String	Must not be populated when creating an event report. Must be populated when amending an existing event report, and must then contain at least 2 characters.
Event version	Cond.	Integer	Must not be populated when creating an event report. Must be populated when amending an existing event report. Must correspond to the current version number for the <i>event ID</i> , as recorded by the SDA.
Notes	N	String	
Stock disposals	Y	Array of stock disposal records	
Completer User ID	Y	String	
Completed date/time	Cond.	Date/time	Must be populated when creating an event report. Must not be populated when amending an existing event report.

### Stock Disposal Records

Disposal reports can contain *one* or *many* stock disposal records. They must contain at least one stock disposal record.

Attribute Name	Mand.	Data Type	Validation
Stock code	Y	String	Must be a valid stock code.
Disposal code	Y	String	Must be a valid disposal code.
Estimate greenweight (kg)	Y	Decimal 2dp	Must be greater than zero.
Number of fish	Cond	Integer	Must be provided if disposal code is G. If provided must be greater than zero.

<sup>1</sup> Please note that the SDA refers to *At Sea Holding Container Location* as *At Sea Holding Receptacle Location*.

## Schedule 6: Landing Report requirements

Attribute Name	Mand.	Data Type	Validation
Event ID	Y	GUID	Must be unique to each event.
Trip ID	Y	String	
Client number	Y	String	Must be a valid client number.
Is vessel used?	Y	Boolean	
Vessel number	Cond.	String	Must be provided if <i>Is vessel used</i> is <i>true</i> . If so, must be a valid vessel registration number.
Landing date/time	Y	Date/time	
Amendment reason	Cond.	String	Must not be populated when creating an event report. Must be populated when amending an existing event report, and must then contain at least 2 characters.
Event Version	Cond.	Integer	Must not be populated when creating an event report. Must be populated when amending an existing event report. Must correspond to the current version number for the <i>event ID</i> , as recorded by the SDA.
Notes	N	String	
Landings	Y	Array of landing records	
Completer User ID	Y	String	
Completed date/time	Cond.	Date/time	Must be populated when creating an event report. Must not be populated when amending an existing event report.

### Landing Records

Each Landing report can contain *one or many* Landing records; they must contain at least one.

Attribute Name	Mand.	Data Type	Validation
Landing code	Y	String	Must be a valid Landing Code.
LFR details received date/time	N	String	
LFR client number	Cond.	String	Must be populated if landing code is L, LP, LR, PF, QL, TL, or EOY and <i>LFR details received date/time</i> is populated. Must be a valid client number. Must not be provided for any other landing codes.
Holding container <sup>2</sup> location	Cond.	Basic Geolocation Set	Holding container location details must be populated if landing code is QL. This can either be a set of coordinates or an address.
Holding container address	Cond.	String	Must not be provided for any other landing codes.
Tranship vessel number	Cond.	String	Must be populated if landing code is TL or TT. Must be a valid vessel registration number. Must not be provided for any other landing codes.
Customary fishing document reference	Cond.	String	Must be populated if landing code is CS. Must not be provided for any other landing codes.
Fish oil landed (litres)	N	Integer	If provided must be greater than zero.
Offal has been mealed	N	Boolean	

<sup>2</sup> Please note that the SDA refers to *Holding Container Location* as *Holding Receptacle Location*.

Attribute Name	Mand.	Data Type	Validation
Landing-products	Y	Array of landing-product records	

## Landing-Product Records

Each Landing record can contain *one or many* Landing-Product records; they must contain at least one.

Attribute Name	Mand.	Data Type	Validation
Product state code	Y	String	Must be a valid product state code.
Container type code	Y	String	Must be a valid container type code.
Estimated container weight (kg)	Y	Decimal 2dp	Must be greater than 0.
Container count	Y	Integer	Must be greater than 0.
Purchase order number	Cond.	String	Must be populated if <i>Landing Code</i> is L, LP, LR, PF, QL, TL, or EOY and <i>LFR details received date/time</i> is populated. Must not be provided for any other landing codes. Optional for the above codes when <i>LFR details received date/time</i> is not populated.
Stocks	Cond.	Array of stock records	

## Stock Records

Each landing-product record can contain *one or many* stock records. If the landing-product record has a product state code of MEA, LIV, or LIB it can have multiple stock records, otherwise it must only have one stock record.

Attribute Name	Mand.	Data Type	Validation
Stock code	Y	String	Must be a valid ERS Stock Code.
Greenweight (kg)	Cond.	Decimal 2dp	This must be provided, and be greater than zero, for all <i>principal</i> product states, except when landing code is L, LP, LR, PF, QL, TL, or EOY and <i>LFR details received date/time</i> is not populated. It is optional for <i>principal</i> product states when landing code is L, LP, LR, PF, QL, TL, or EOY and <i>LFR details received date/time</i> is not populated. Must never be populated for any <i>additional</i> product states.
Shark fins (kg)	Cond.	Decimal 2dp	This must be provided, and be greater than zero, when product state is SHF, except when landing code is L, LP, LR, PF, QL, TL, or EOY and <i>LFR details received date/time</i> is not populated. It is optional for SHF, when landing code is L, LP, LR, PF, QL, TL, or EOY and <i>LFR details received date/time</i> is not populated. Must not be provided for any other product states.