

Disclaimer: This map and all information accompanying it (the "Map") is intended to be used only in conjunction with other data sources and methods, and should only be used for the purpose for which it was developed. The information shown in this Map is based on a summary of data obtained from various sources. While all reasonable measures have been taken to ensure the accuracy of the Map, MPI: (a) gives no warranty or representation in relation to the accuracy, completeness, reliability or fitness for purpose of the Map, and (b) accepts no liability whatsoever in relation to any loss, damage or other costs relating to any person's use of the Map, including but not limited to any compilations, derivative works or modifications of the Map. Crown copyright ©. This map is subject to Crown copyright administered by Ministry for Primary Industries (MPI).



Pūponga

Set Net Prohibition (in force 1 Oct)

0 0.13 0.25
nm

0 0.23 0.45
km



1:17,000

Date: 25/09/2020

Produced by: Spatial Intelligence

Reference: r200203

Coordinate System: NZTM


Data Attribution:
This map uses data sourced from LINZ under CC-BY 4.0.

Disclaimer: This map and all information accompanying it (the "Map") is intended to be used as a guide only, in conjunction with other data sources and methods, and should only be used for the purpose for which it was developed. The information shown in this Map is based on a summary of data obtained from various sources. While all reasonable measures have been taken to ensure the accuracy of the Map, MPI: (a) gives no warranty or representation in relation to the accuracy, completeness, reliability or fitness for purpose of the Map; and (b) accepts no liability whatsoever in relation to any loss, damage or other costs relating to any person's use of the Map, including but not limited to any compilations, derivative works or modifications of the Map. Crown copyright ©. This map is subject to Crown copyright administered by Ministry for Primary Industries (MPI).



An approximate boundary is shown. The set net closure area does not have legislated coordinates for this river or estuary. A straight line joining the mean high-water marks at each side of the natural entrance points of a river mouth or where a river first enters an estuarine environment must be treated as the inner boundary.

Pākawau Inlet

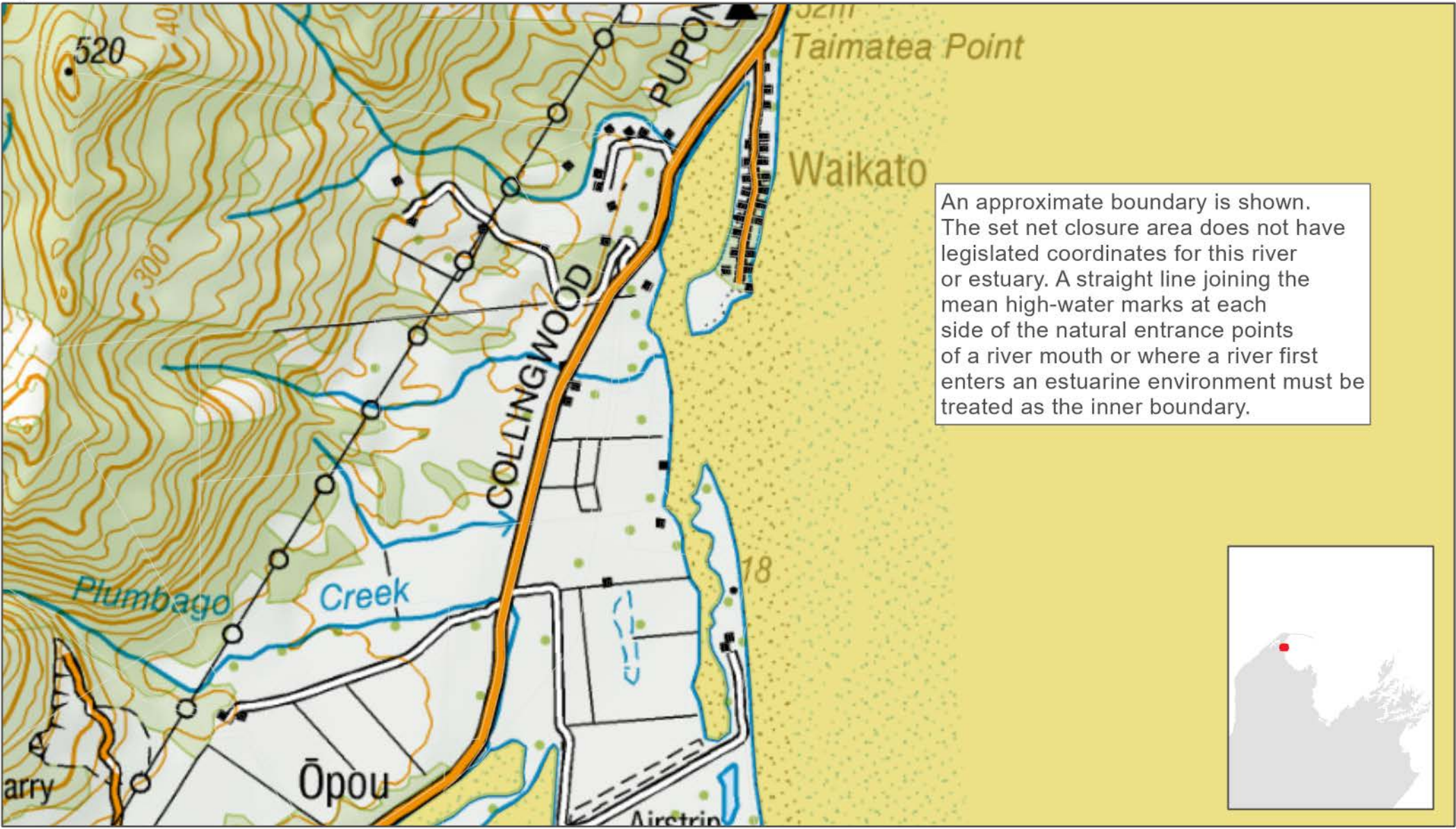
 Set Net Prohibition (in force 1 Oct)



Date: 25/09/2020
 Produced by: Spatial Intelligence
 Reference: r200203
 Coordinate System: NZTM

1:12,000
 Data Attribution:
 This map uses data sourced from LINZ under CC-BY 4.0.

Disclaimer: This map and all information accompanying it (the "Map") is intended to be used only in conjunction with other data sources and methods, and should only be used for the purpose for which it was developed. The information shown in this Map is based on a summary of data obtained from various sources. While all reasonable measures have been taken to ensure the accuracy of the Map, MPI: (a) gives no warranty or representation in relation to the accuracy, completeness, reliability or fitness for purpose of the Map; and (b) accepts no liability whatsoever in relation to any loss, damage or other costs relating to any person's use of the Map, including but not limited to any compilations, derivative works or modifications of the Map. Crown copyright ©. This map is subject to Crown copyright administered by Ministry for Primary Industries (MPI).



An approximate boundary is shown. The set net closure area does not have legislated coordinates for this river or estuary. A straight line joining the mean high-water marks at each side of the natural entrance points of a river mouth or where a river first enters an estuarine environment must be treated as the inner boundary.



Totara Avenue

Set Net Prohibition (in force 1 Oct)



1:15,000

Date: 25/09/2020
 Produced by: Spatial Intelligence
 Reference: r200203
 Coordinate System: NZTM

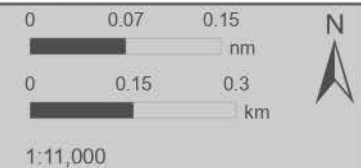
Data Attribution:
 This map uses data sourced from LINZ under CC-BY 4.0.

Disclaimer: This map and all information accompanying it (the "Map") is intended to be used as a guide only, in conjunction with other data sources and methods, and should only be used for the purpose for which it was developed. The information shown in this Map is based on a summary of data obtained from various sources. While all reasonable measures have been taken to ensure the accuracy of the Map, MPI: (a) gives no warranty or representation in relation to the accuracy, completeness, reliability or fitness for purpose of the Map, and (b) accepts no liability whatsoever in relation to any loss, damage or other costs relating to any person's use of the Map, including but not limited to any compilations, derivative works or modifications of the Map. Crown copyright ©. This map is subject to Crown copyright administered by Ministry for Primary Industries (MPI).



Collingwood

- ▲ **Legislated Coordinates**
- Set Net Prohibition (in force 1 Oct)**



Date: 25/09/2020

Produced by: Spatial Intelligence

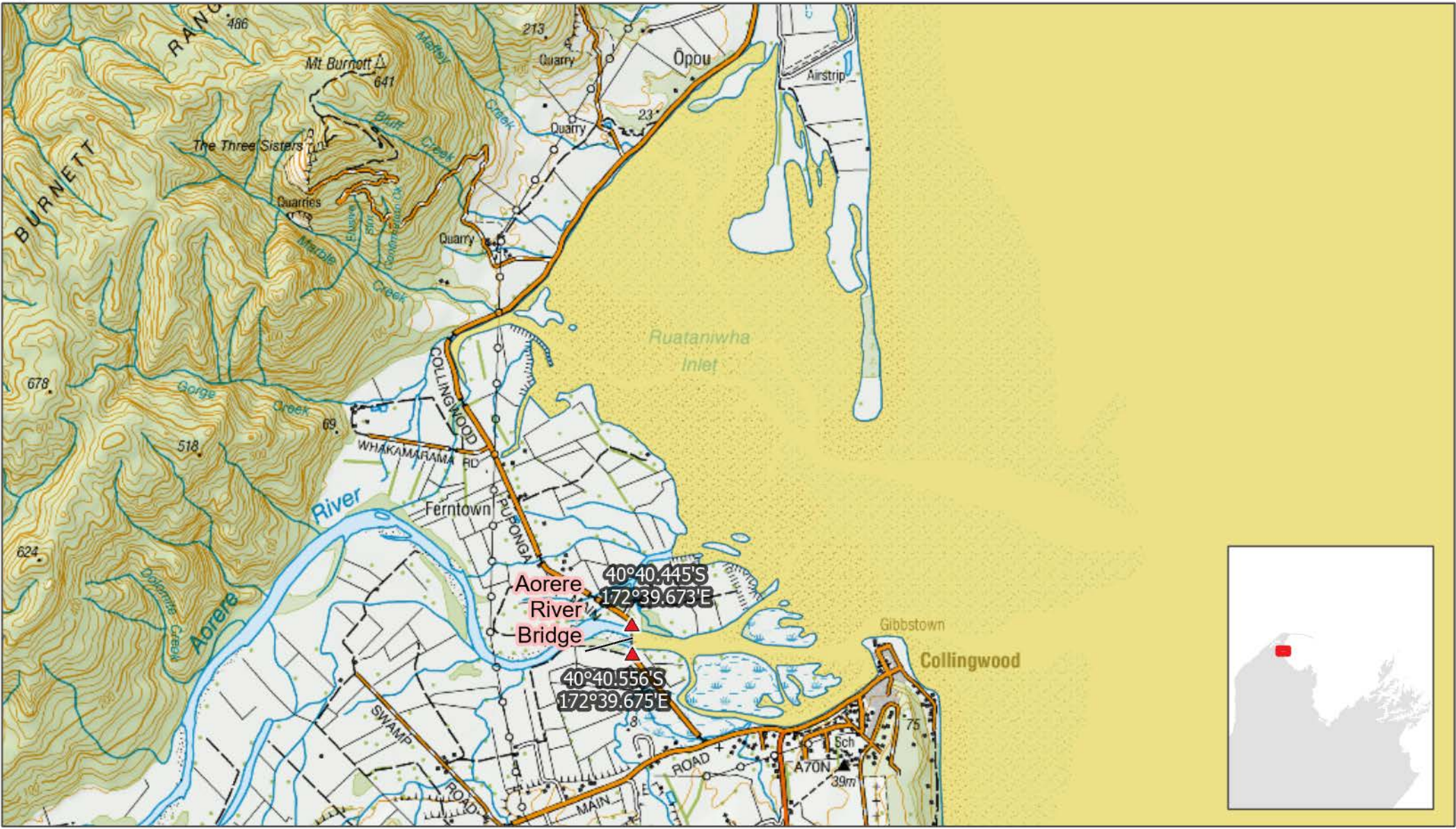
Reference: r200203

Coordinate System: NZTM

1:11,000

Data Attribution:
 This map uses data sourced from LINZ under CC-BY 4.0.

Disclaimer: This map and all information accompanying it (the "Map") is intended to be used as a guide only, in conjunction with other data sources and methods, and should only be used for the purpose for which it was developed. The information shown in this Map is based on a summary of data obtained from various sources. While all reasonable measures have been taken to ensure the accuracy of the Map, MPI: (a) gives no warranty or representation in relation to the accuracy, completeness, reliability or fitness for purpose of the Map; and (b) accepts no liability whatsoever in relation to any loss, damage or other costs relating to any person's use of the Map, including but not limited to any compilations, derivative works or modifications of the Map. Crown copyright ©. This map is subject to Crown copyright administered by Ministry for Primary Industries (MPI).



Ruataniwha Inlet

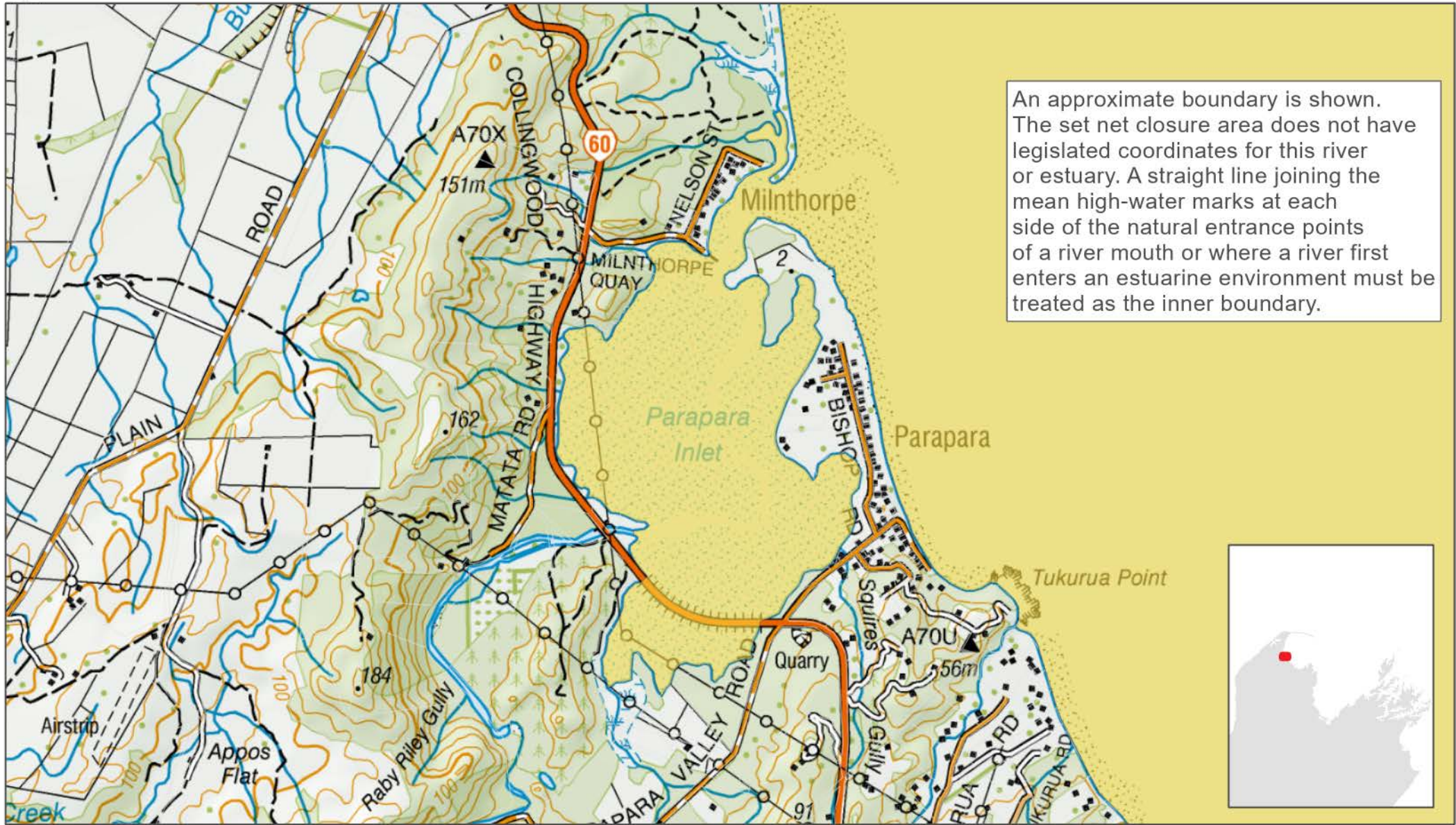
- ▲ **Legislated Coordinates**
- Set Net Prohibition (in force 1 Oct)**



Date: 25/09/2020
 Produced by: Spatial Intelligence
 Reference: r200203
 Coordinate System: NZTM

1:37,000
 Data Attribution:
 This map uses data sourced from LINZ under CC-BY 4.0.

Disclaimer: This map and all information accompanying it (the "Map") is intended to be used as a guide only, in conjunction with other data sources and methods, and should only be used for the purpose for which it was developed. The information shown in this Map is based on a summary of data obtained from various sources. While all reasonable measures have been taken to ensure the accuracy of the Map, MPI: (a) gives no warranty or representation in relation to the accuracy, completeness, reliability or fitness for purpose of the Map; and (b) accepts no liability whatsoever in relation to any loss, damage or other costs relating to any person's use of the Map, including but not limited to any compilations, derivative works or modifications of the Map. Crown copyright ©. This map is subject to Crown copyright administered by Ministry for Primary Industries (MPI).

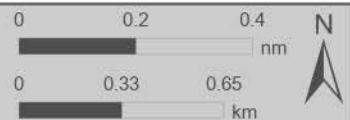


An approximate boundary is shown. The set net closure area does not have legislated coordinates for this river or estuary. A straight line joining the mean high-water marks at each side of the natural entrance points of a river mouth or where a river first enters an estuarine environment must be treated as the inner boundary.



Parapara Inlet

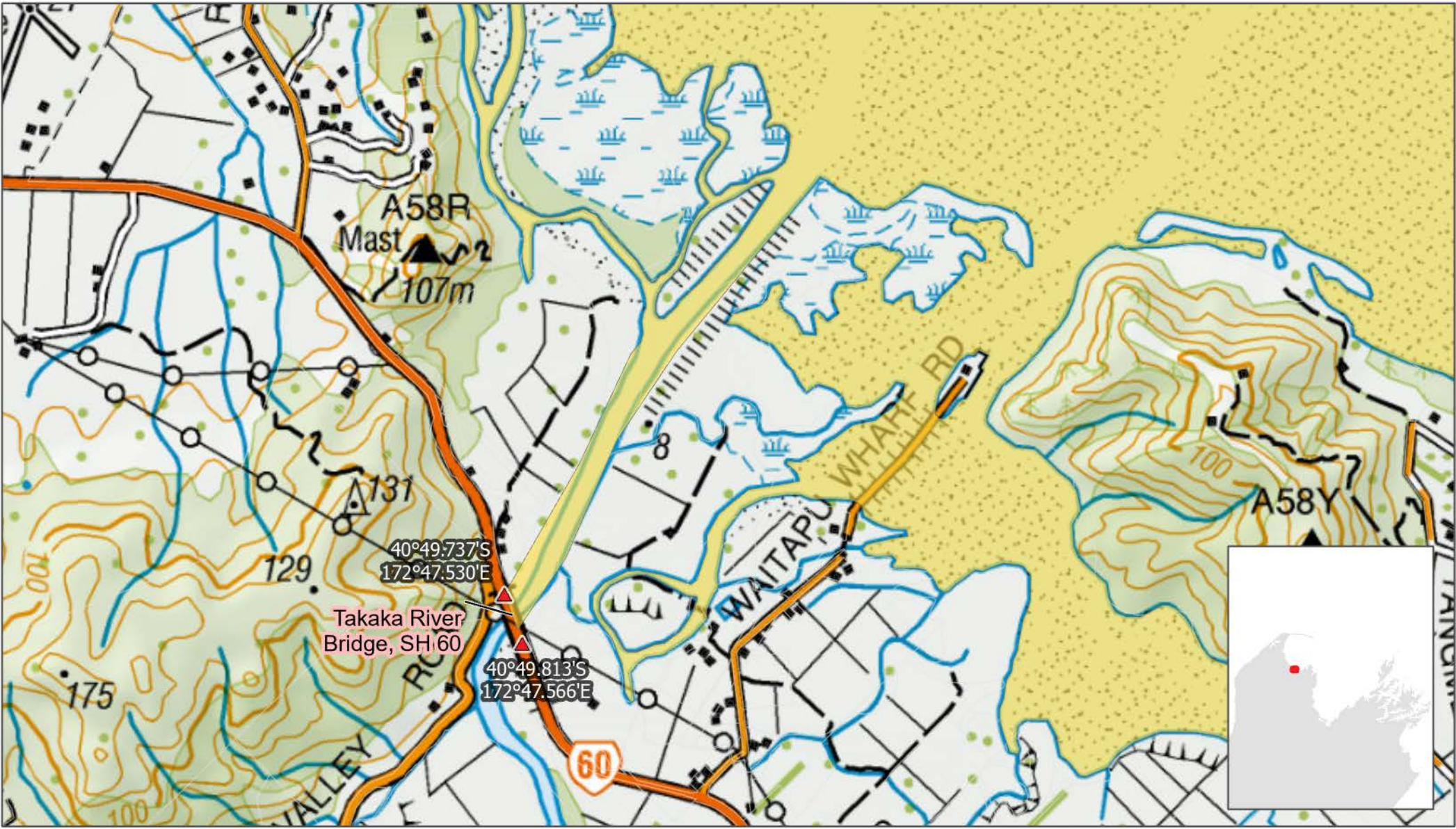
Set Net Prohibition (in force 1 Oct)



Date: 25/09/2020
 Produced by: Spatial Intelligence
 Reference: r200203
 Coordinate System: NZTM

1:24,000
 Data Attribution:
 This map uses data sourced from LINZ under CC-BY 4.0.

Disclaimer: This map and all information accompanying it (the "Map") is intended to be used only in conjunction with other data sources and methods, and should only be used for the purpose for which it was developed. The information shown in this Map is based on a summary of data obtained from various sources. While all reasonable measures have been taken to ensure the accuracy of the Map, MPI: (a) gives no warranty or representation in relation to the accuracy, completeness, reliability or fitness for purpose of the Map; and (b) accepts no liability whatsoever in relation to any loss, damage or other costs relating to any person's use of the Map, including but not limited to any compilations, derivative works or modifications of the Map. Crown copyright ©. This map is subject to Crown copyright administered by Ministry for Primary Industries (MPI).



Takaka River

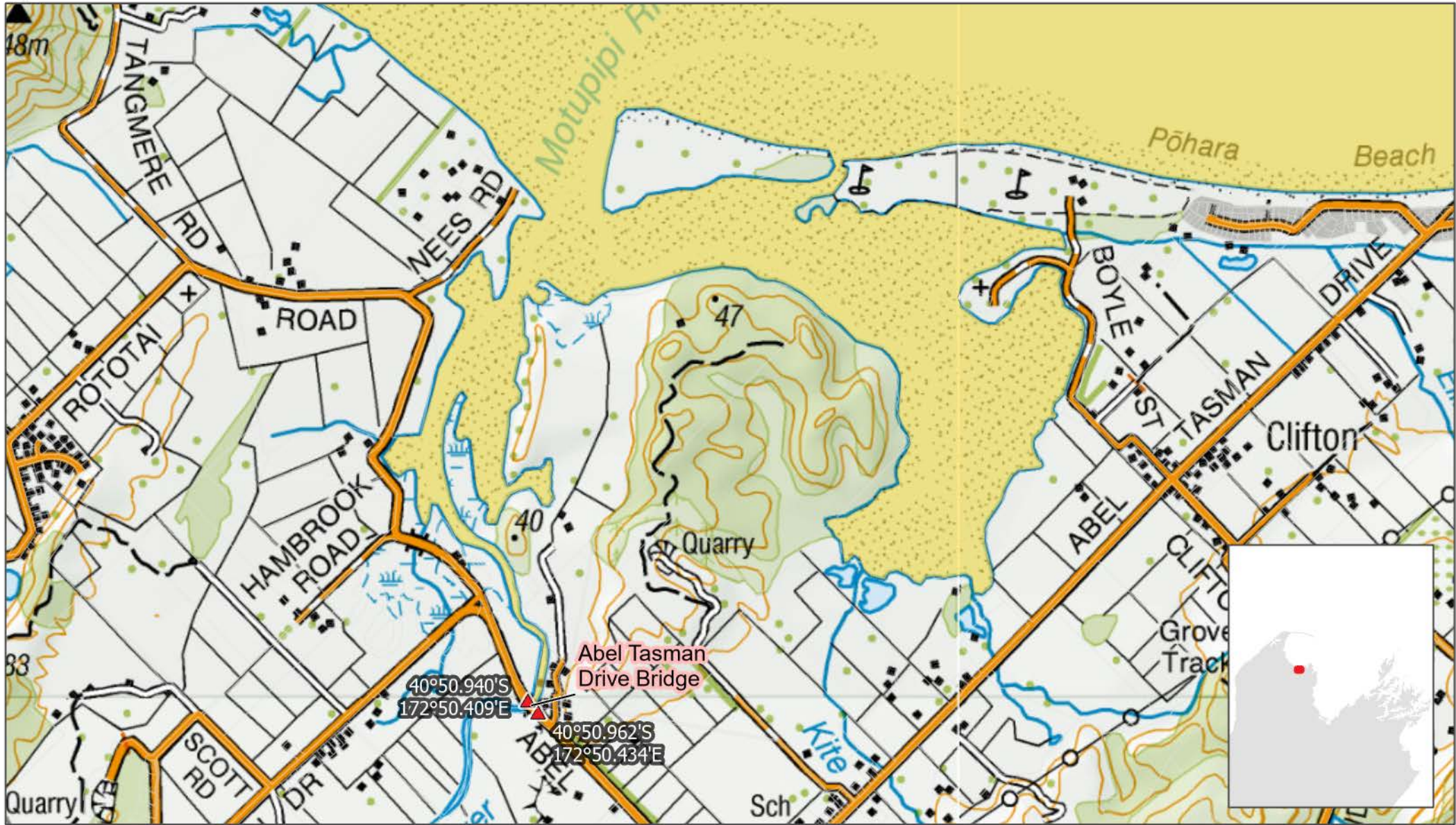
- ▲ Legislated Coordinates
- Set Net Prohibition (in force 1 Oct)



Date: 25/09/2020
 Produced by: Spatial Intelligence
 Reference: r200203
 Coordinate System: NZTM

1:15,000
 Data Attribution:
 This map uses data sourced from LINZ under CC-BY 4.0.

Disclaimer: This map and all information accompanying it (the "Map") is intended to be used as a guide only, in conjunction with other data sources and methods, and should only be used for the purpose for which it was developed. The information shown in this Map is based on a summary of data obtained from various sources. While all reasonable measures have been taken to ensure the accuracy of the Map, MPI: (a) gives no warranty or representation in relation to the accuracy, completeness, reliability or fitness for purpose of the Map; and (b) accepts no liability whatsoever in relation to any loss, damage or other costs relating to any person's use of the Map, including but not limited to any compilations, derivative works or modifications of the Map. Crown copyright ©. This map is subject to Crown copyright administered by Ministry for Primary Industries (MPI).



Motupipi River

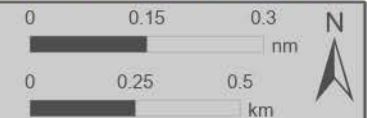
- ▲ **Legislated Coordinates**
- Set Net Prohibition (in force 1 Oct)**

Date: 25/09/2020

Produced by: Spatial Intelligence

Reference: r200203

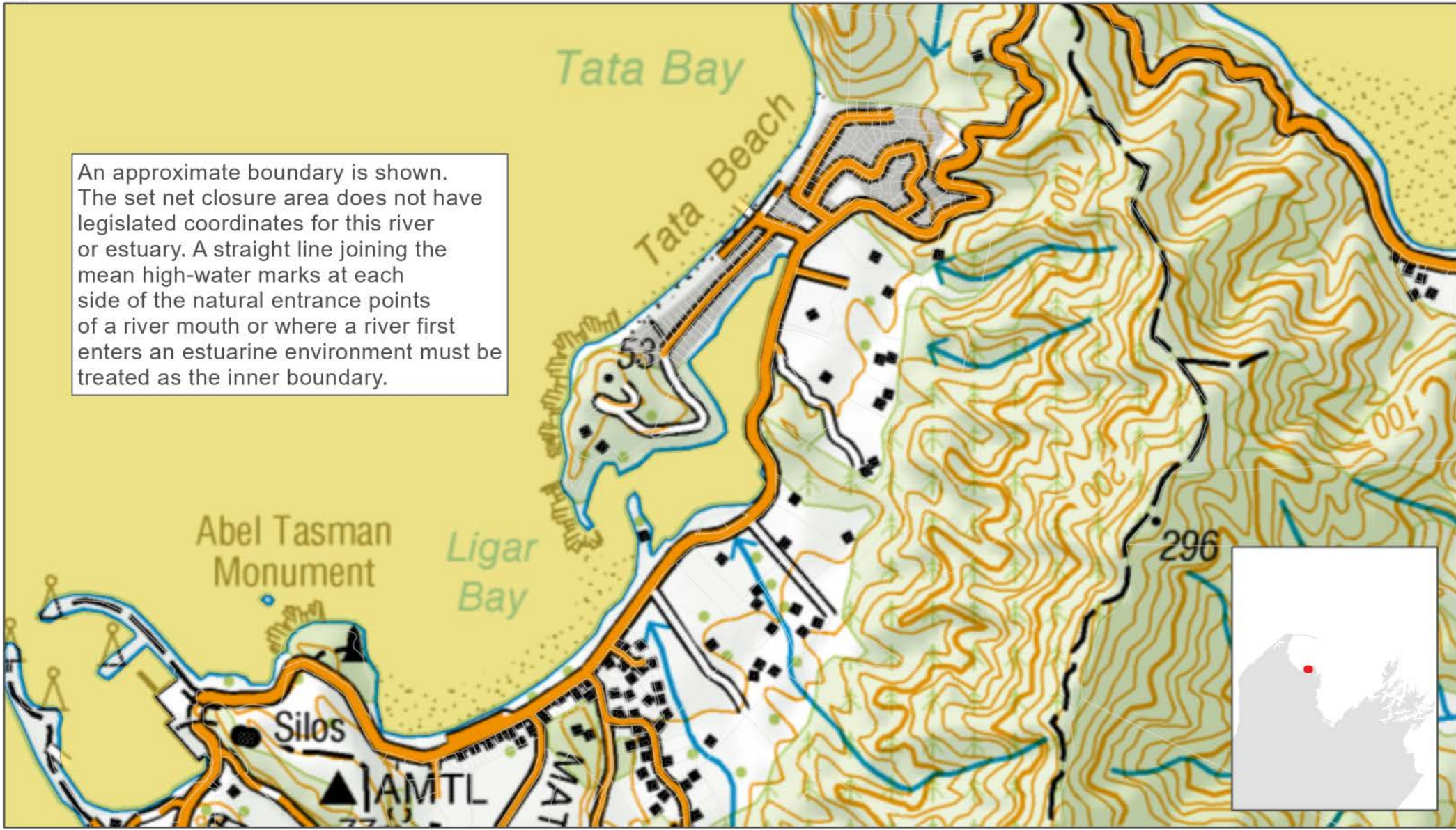
Coordinate System: NZTM



1:18,000

Data Attribution:
This map uses data sourced from LINZ under CC-BY 4.0.

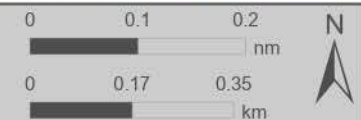
Disclaimer: This map and all information accompanying it (the "Map") is intended to be used only in conjunction with other data sources and methods, and should only be used for the purpose for which it was developed. The information shown in this Map is based on a summary of data obtained from various sources. While all reasonable measures have been taken to ensure the accuracy of the Map, MPI: (a) gives no warranty or representation in relation to the accuracy, completeness, reliability or fitness for purpose of the Map; and (b) accepts no liability whatsoever in relation to any loss, damage or other costs relating to any person's use of the Map, including but not limited to any compilations, derivative works or modifications of the Map. Crown copyright ©. This map is subject to Crown copyright administered by Ministry for Primary Industries (MPI).



An approximate boundary is shown. The set net closure area does not have legislated coordinates for this river or estuary. A straight line joining the mean high-water marks at each side of the natural entrance points of a river mouth or where a river first enters an estuarine environment must be treated as the inner boundary.

Tata Beach

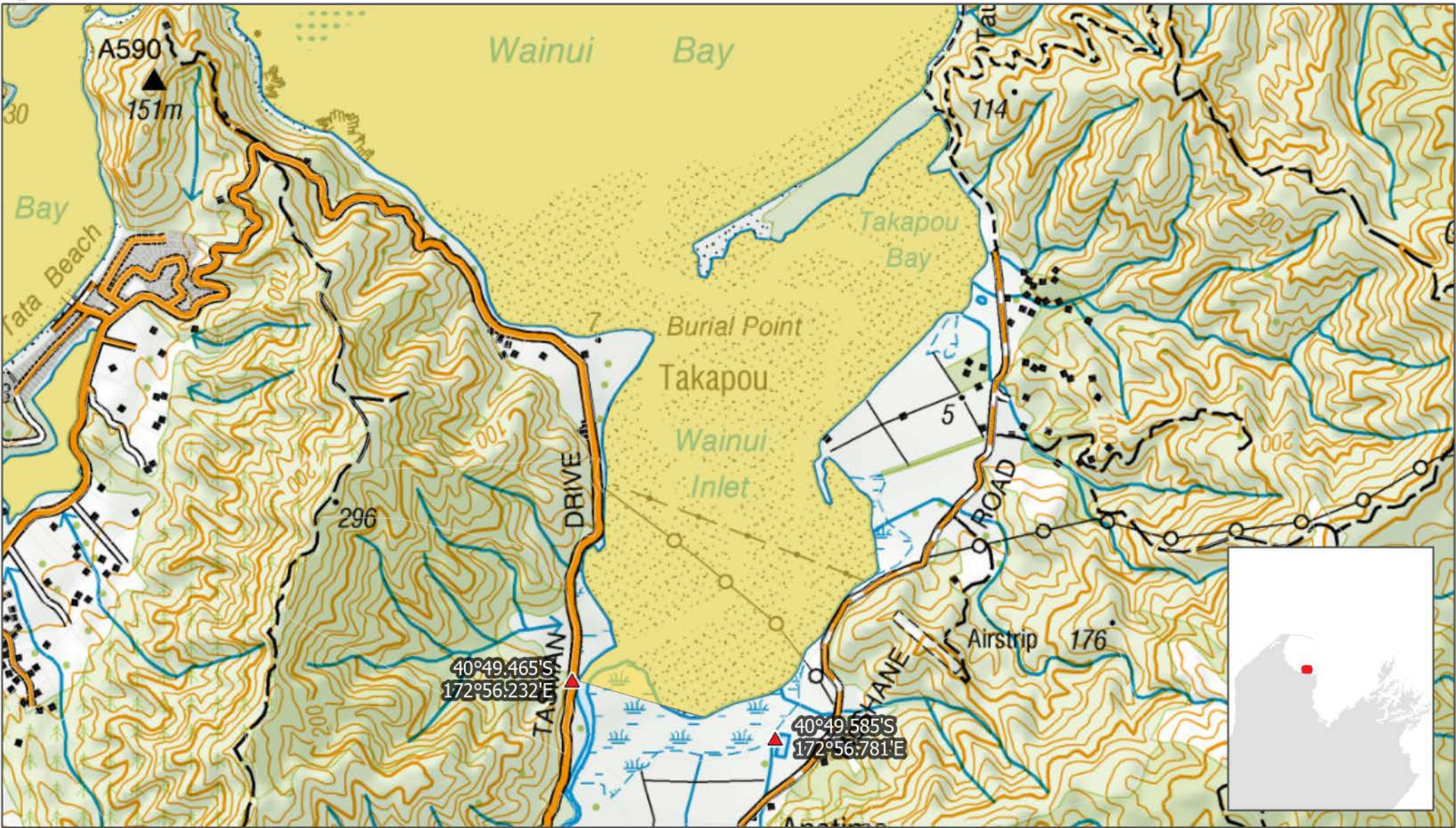
Set Net Prohibition (in force 1 Oct)



Date: 25/09/2020
 Produced by: Spatial Intelligence
 Reference: r200203
 Coordinate System: NZTM

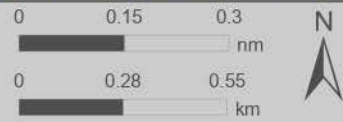
1:13,000
 Data Attribution:
 This map uses data sourced from LINZ under CC-BY 4.0.

Disclaimer: This map and all information accompanying it (the "Map") is intended to be used only in conjunction with other data sources and methods, and should only be used for the purpose for which it was developed. The information shown in this Map is based on a summary of data obtained from various sources. While all reasonable measures have been taken to ensure the accuracy of the Map, MPI: (a) gives no warranty or representation in relation to the accuracy, completeness, reliability or fitness for purpose of the Map; and (b) accepts no liability whatsoever in relation to any loss, damage or other costs relating to any person's use of the Map, including but not limited to any compilations, derivative works or modifications of the Map. Crown copyright ©. This map is subject to Crown copyright administered by Ministry for Primary Industries (MPI).



Wainui Inlet

- ▲ **Legislated Coordinates**
- Set Net Prohibition (in force 1 Oct)**



Date: 25/09/2020
Produced by: Spatial Intelligence
Reference: r200203
Coordinate System: NZTM

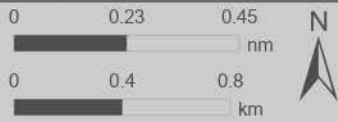
1:20,000
Data Attribution:
This map uses data sourced from LINZ under CC-BY 4.0.

Disclaimer: This map and all information accompanying it (the "Map") is intended to be used as a guide only, in conjunction with other data sources and methods, and should only be used for the purpose for which it was developed. The information shown in this Map is based on a summary of data obtained from various sources. While all reasonable measures have been taken to ensure the accuracy of the Map, MPI: (a) gives no warranty or representation in relation to the accuracy, completeness, reliability or fitness for purpose of the Map; and (b) accepts no liability whatsoever in relation to any loss, damage or other costs relating to any person's use of the Map, including but not limited to any compilations, derivative works or modifications of the Map. Crown copyright ©. This map is subject to Crown copyright administered by Ministry for Primary Industries (MPI).



Awaroa Inlet

- ▲ **Legislated Coordinates**
- Set Net Prohibition (in force 1 Oct)
- Marine Reserve

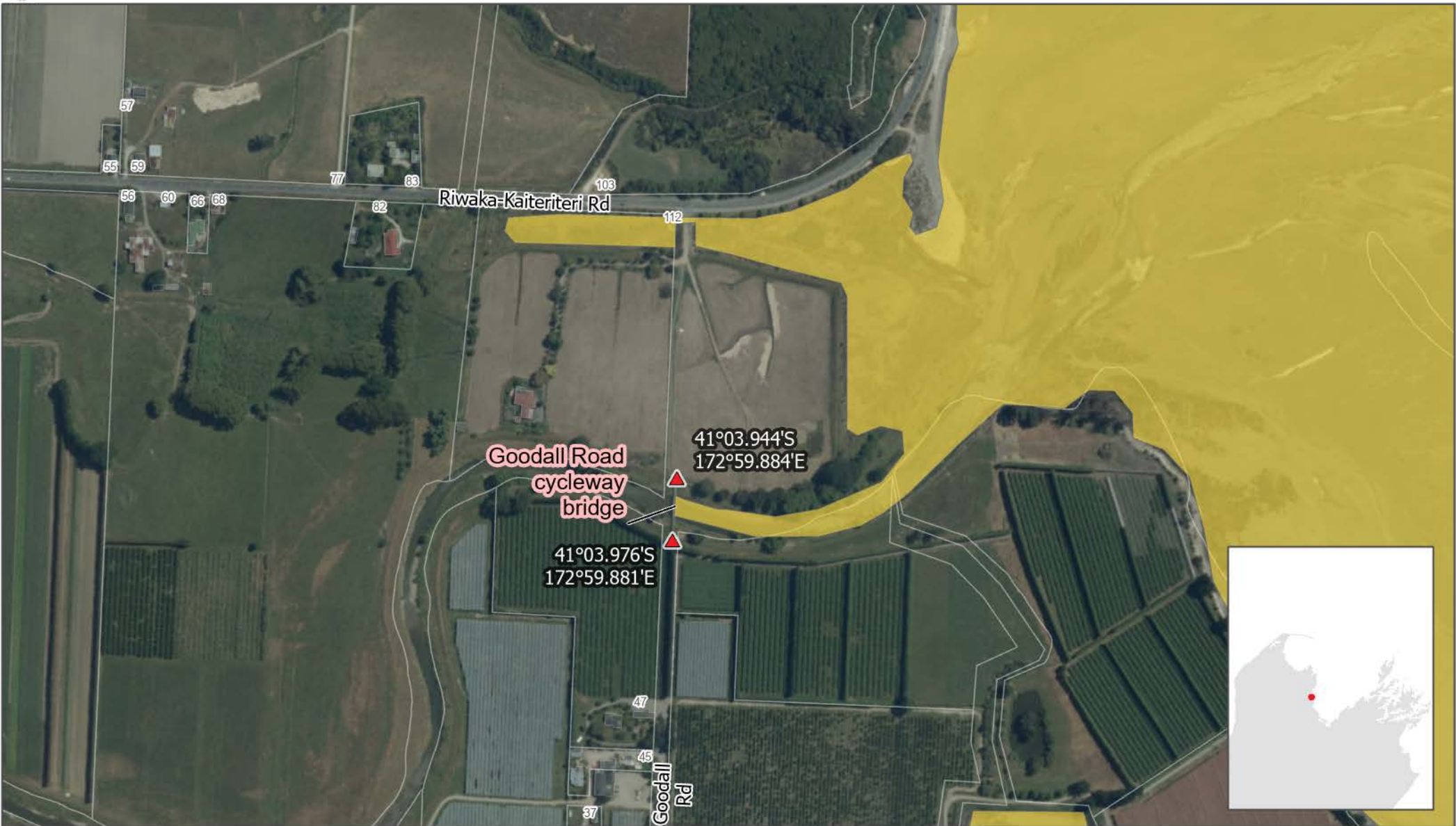


1:28,000

Date: 25/09/2020
 Produced by: Spatial Intelligence
 Reference: r200203
 Coordinate System: NZTM

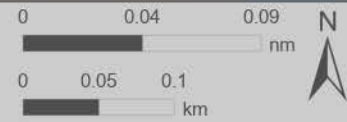
Data Attribution:
 This map uses data sourced from LINZ under CC-BY 4.0.

Disclaimer: This map and all information accompanying it (the "Map") is intended to be used only in conjunction with other data sources and methods, and should only be used for the purpose for which it was developed. The information shown in this Map is based on a summary of data obtained from various sources. While all reasonable measures have been taken to ensure the accuracy of the Map, MPI: (a) gives no warranty or representation in relation to the accuracy, completeness, reliability or fitness for purpose of the Map; and (b) accepts no liability whatsoever in relation to any loss, damage or other costs relating to any person's use of the Map, including but not limited to any compilations, derivative works or modifications of the Map. Crown copyright ©. This map is subject to Crown copyright administered by Ministry for Primary Industries (MPI).



Riuwaka River

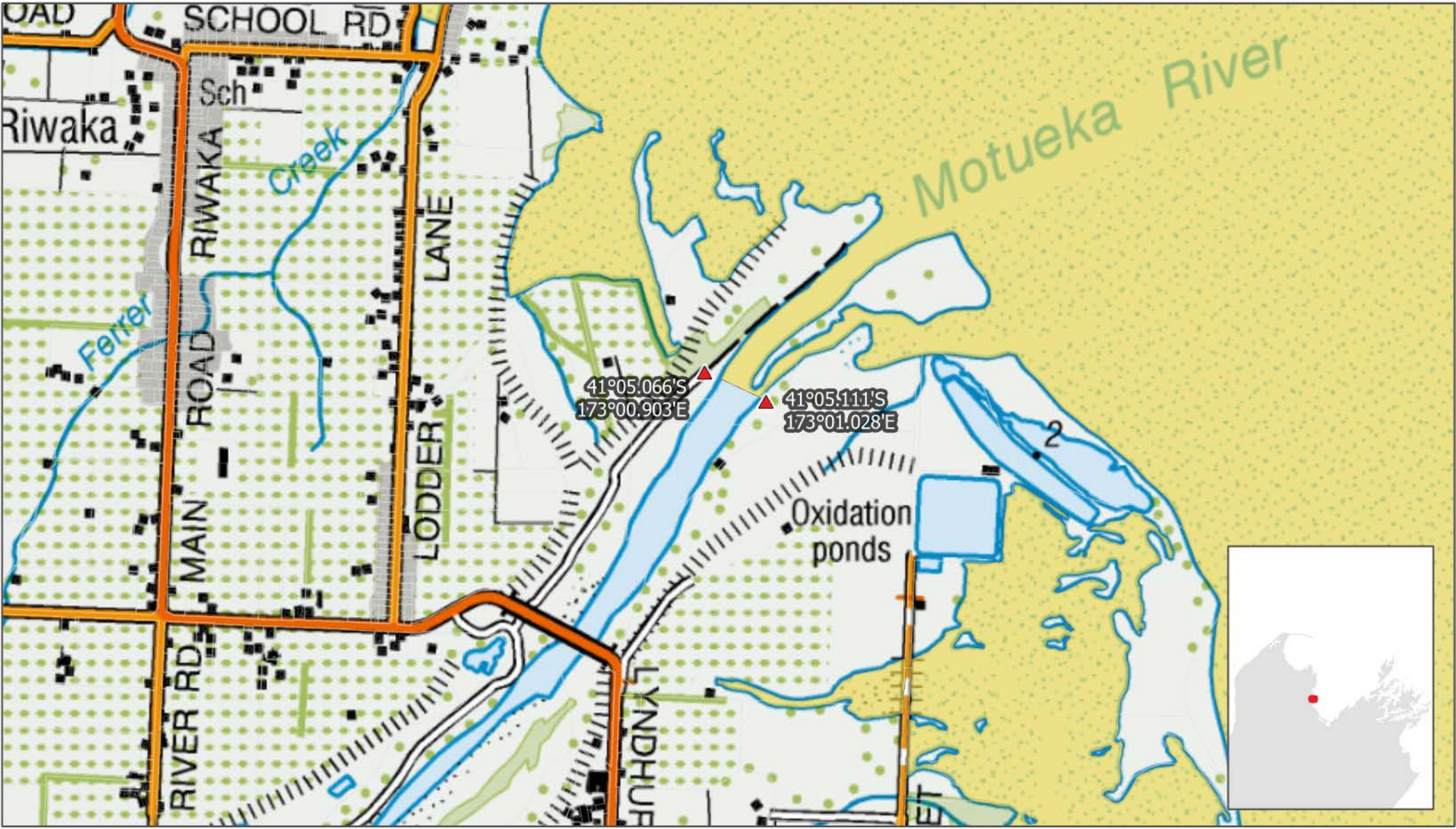
- ▲ **Legislated Coordinates**
- Set Net Prohibition (in force 1 Oct)**



Date: 25/09/2020
 Produced by: Spatial Intelligence
 Reference: r200203
 Coordinate System: NZTM

1:5,000
 Data Attribution:
 This map uses data sourced from LINZ under CC-BY 4.0.

Disclaimer: This map and all information accompanying it (the "Map") is intended to be used as a guide only, in conjunction with other data sources and methods, and should only be used for the purpose for which it was developed. The information shown in this Map is based on a summary of data obtained from various sources. While all reasonable measures have been taken to ensure the accuracy of the Map, MPI: (a) gives no warranty or representation in relation to the accuracy, completeness, reliability or fitness for purpose of the Map; and (b) accepts no liability whatsoever in relation to any loss, damage or other costs relating to any person's use of the Map, including but not limited to any compilations, derivative works or modifications of the Map. Crown copyright ©. This map is subject to Crown copyright administered by Ministry for Primary Industries (MPI).



41°05.066'S
173°00.903'E

41°05.111'S
173°01.028'E

Oxidation ponds



Motueka River

- ▲ Legislated Coordinates
- Set Net Prohibition (in force 1 Oct)



Date: 25/09/2020
Produced by: Spatial Intelligence
Reference: r200203
Coordinate System: NZTM

1:15,000
Data Attribution:
This map uses data sourced from LINZ under CC-BY 4.0.

Disclaimer: This map and all information accompanying it (the "Map") is intended to be used as a guide only, in conjunction with other data sources and methods, and should only be used for the purpose for which it was developed. The information shown in this Map is based on a summary of data obtained from various sources. While all reasonable measures have been taken to ensure the accuracy of the Map, MPI: (a) gives no warranty or representation in relation to the accuracy, completeness, reliability or fitness for purpose of the Map; and (b) accepts no liability whatsoever in relation to any loss, damage or other costs relating to any person's use of the Map, including but not limited to any compilations, derivative works or modifications of the Map. Crown copyright ©. This map is subject to Crown copyright administered by Ministry for Primary Industries (MPI).



Moutere Inlet

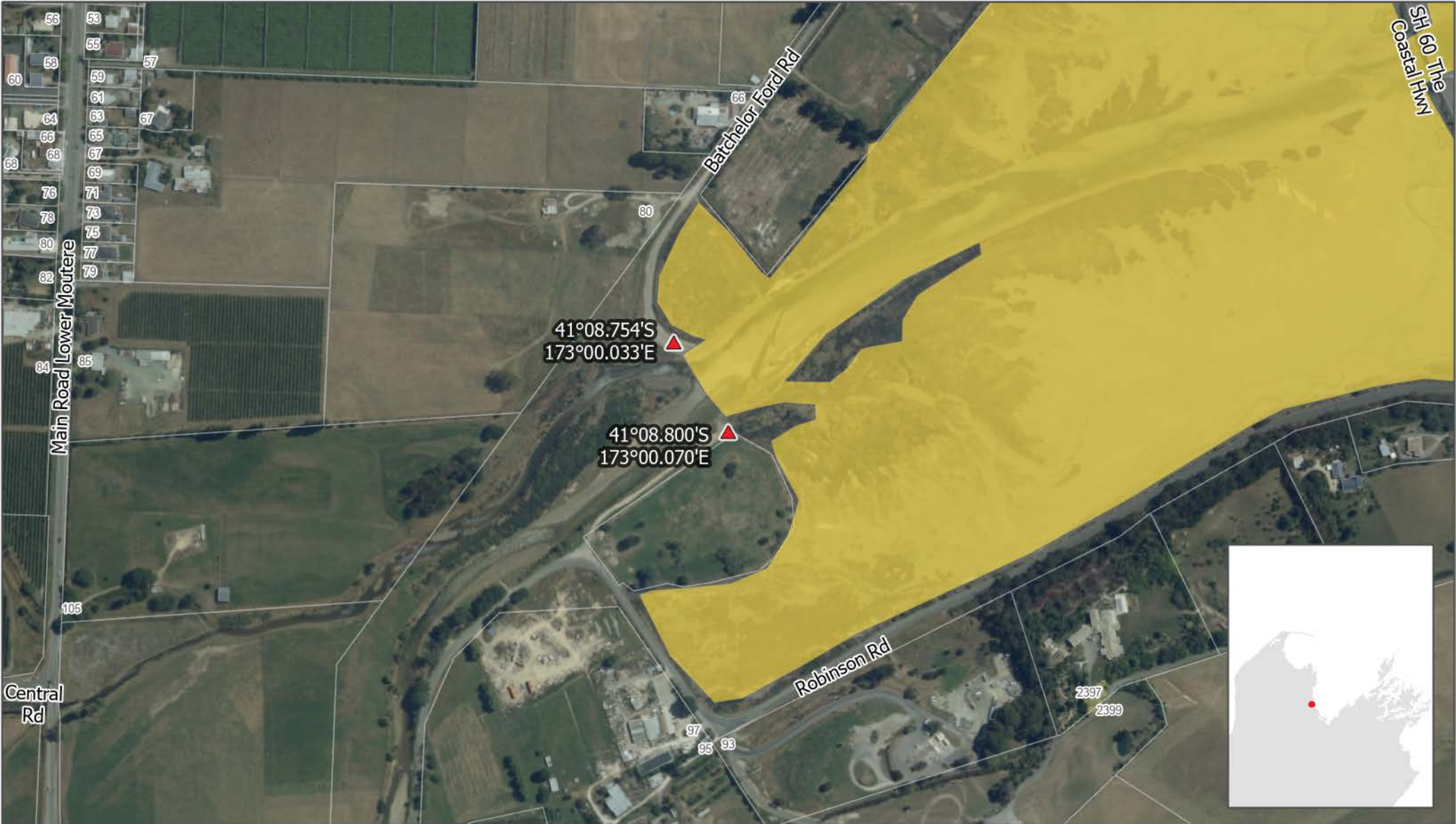
- ▲ **Legislated Coordinates**
- Set Net Prohibition (in force 1 Oct)**



Date: 25/09/2020
 Produced by: Spatial Intelligence
 Reference: r200203
 Coordinate System: NZTM

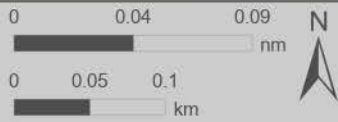
1:76,000
 Data Attribution:
 This map uses data sourced from LINZ under CC-BY 4.0.

Disclaimer: This map and all information accompanying it (the "Map") is intended to be used as a guide only, in conjunction with other data sources and methods, and should only be used for the purpose for which it was developed. The information shown in this Map is based on a summary of data obtained from various sources. While all reasonable measures have been taken to ensure the accuracy of the Map, MPI: (a) gives no warranty or representation in relation to the accuracy, completeness, reliability or fitness for purpose of the Map; and (b) accepts no liability whatsoever in relation to any loss, damage or other costs relating to any person's use of the Map, including but not limited to any compilations, derivative works or modifications of the Map. Crown copyright ©. This map is subject to Crown copyright administered by Ministry for Primary Industries (MPI).



Moutere River

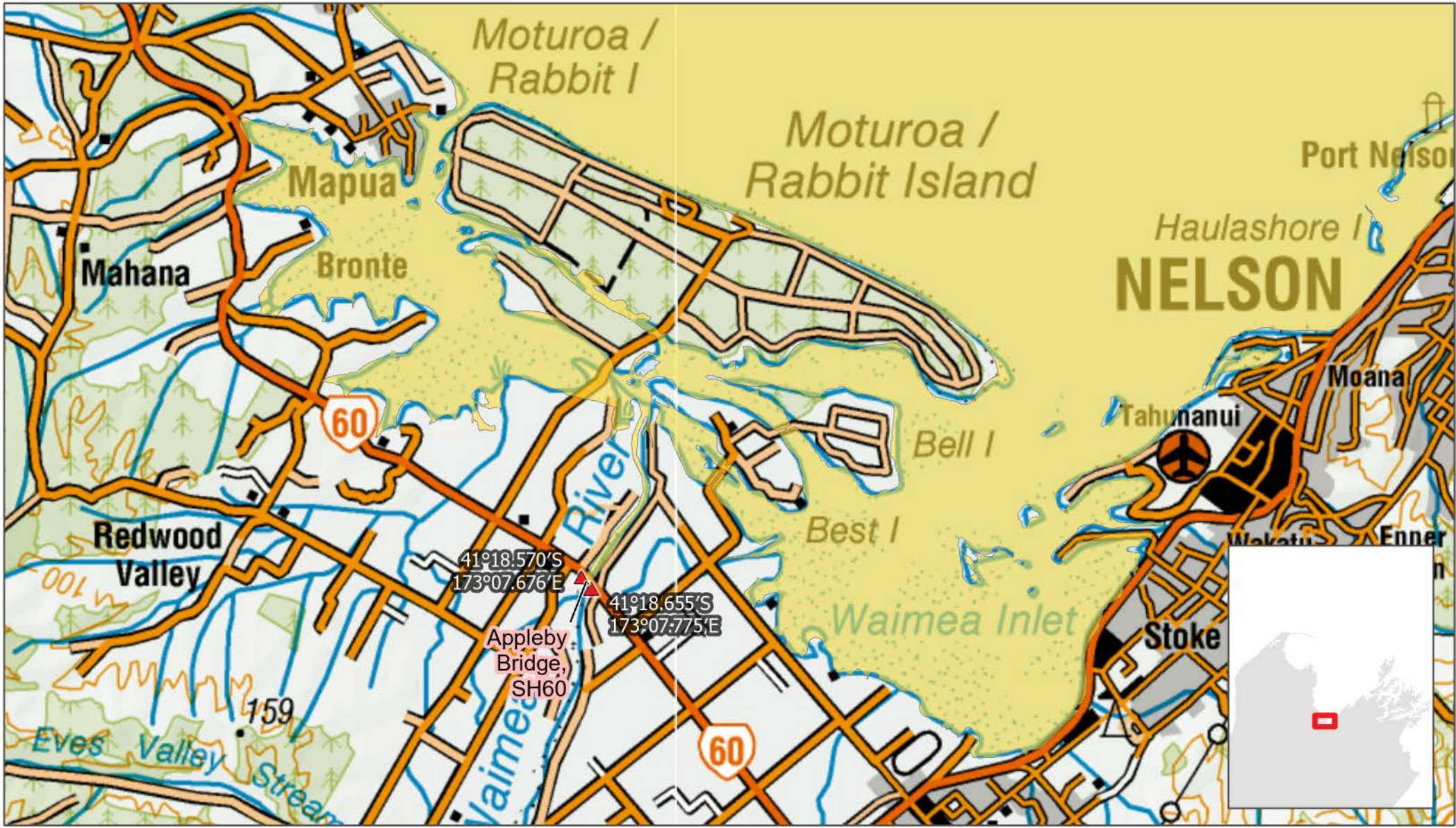
- ▲ **Legislated Coordinates**
- Set Net Prohibition (in force 1 Oct)**



Date: 25/09/2020
 Produced by: Spatial Intelligence
 Reference: r200203
 Coordinate System: NZTM

1:5,000
 Data Attribution:
 This map uses data sourced from LINZ under CC-BY 4.0.

Disclaimer: This map and all information accompanying it (the "Map") is intended to be used only in conjunction with other data sources and methods, and should only be used for the purpose for which it was developed. The information shown in this Map is based on a summary of data obtained from various sources. While all reasonable measures have been taken to ensure the accuracy of the Map, MPI: (a) gives no warranty or representation in relation to the accuracy, completeness, reliability or fitness for purpose of the Map; and (b) accepts no liability whatsoever in relation to any loss, damage or other costs relating to any person's use of the Map, including but not limited to any compilations, derivative works or modifications of the Map. Crown copyright ©. This map is subject to Crown copyright administered by Ministry for Primary Industries (MPI).



Waimea Inlet

- ▲ **Legislated Coordinates**
- Set Net Prohibition (in force 1 Oct)**



1:72,000

Date: 25/09/2020
Produced by: Spatial Intelligence
Reference: r200203
Coordinate System: NZTM

Data Attribution:
This map uses data sourced from LINZ under CC-BY 4.0.

Disclaimer: This map and all information accompanying it (the "Map") is intended to be used as a guide only, in conjunction with other data sources and methods, and should only be used for the purpose for which it was developed. The information shown in this Map is based on a summary of data obtained from various sources. While all reasonable measures have been taken to ensure the accuracy of the Map, MPI: (a) gives no warranty or representation in relation to the accuracy, completeness, reliability or fitness for purpose of the Map; and (b) accepts no liability whatsoever in relation to any loss, damage or other costs relating to any person's use of the Map, including but not limited to any compilations, derivative works or modifications of the Map. Crown copyright ©. This map is subject to Crown copyright administered by Ministry for Primary Industries (MPI).



Nelson Haven

- ▲ Legislated Coordinates
- Set Net Prohibition (in force 1 Oct)

Date: 25/09/2020

Produced by: Spatial Intelligence

Reference: r200203

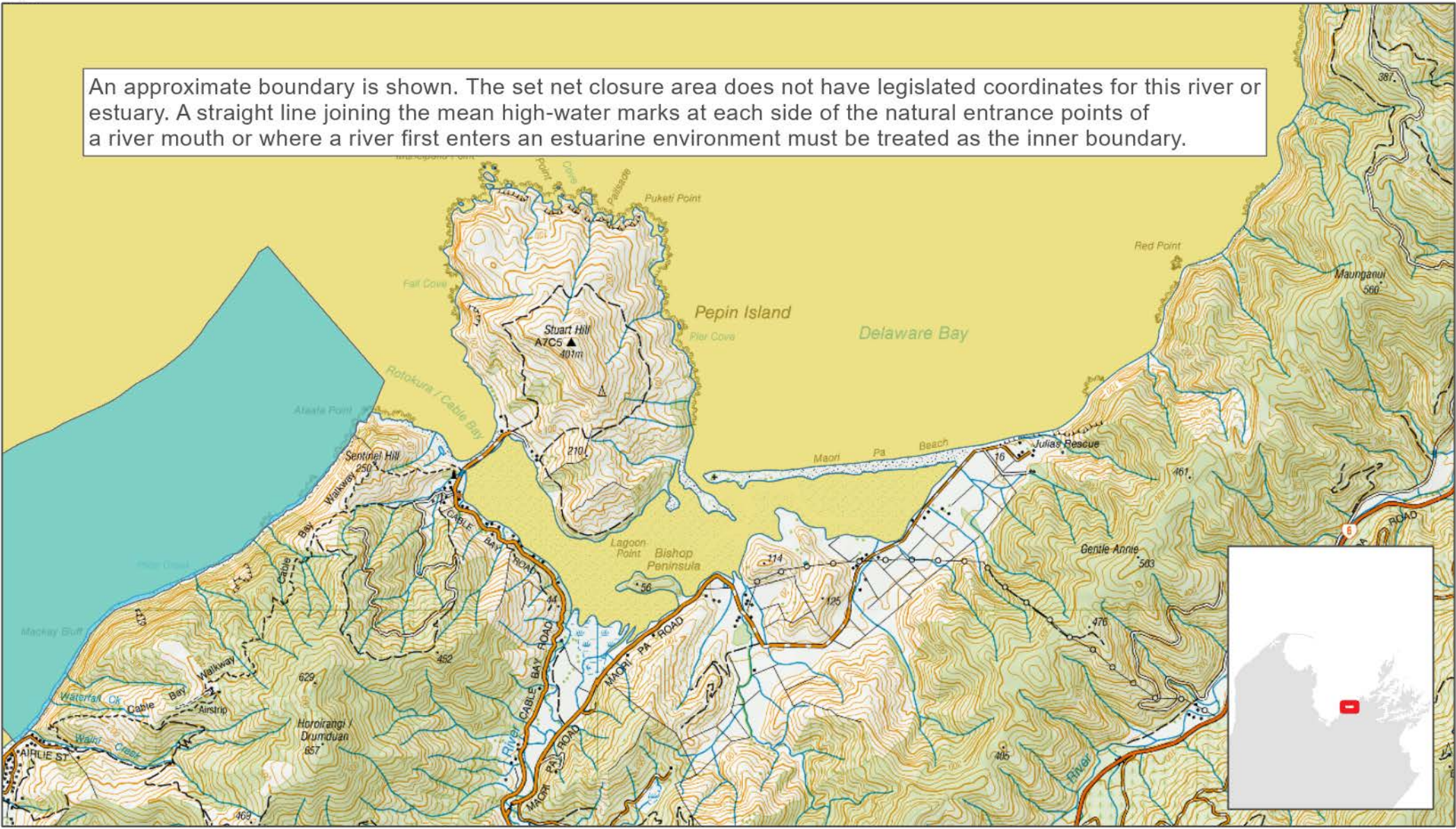
Coordinate System: NZTM



1:73,000

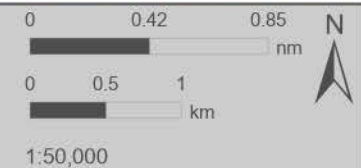
Data Attribution:
This map uses data sourced from LINZ under CC-BY 4.0.

An approximate boundary is shown. The set net closure area does not have legislated coordinates for this river or estuary. A straight line joining the mean high-water marks at each side of the natural entrance points of a river mouth or where a river first enters an estuarine environment must be treated as the inner boundary.



Pepin Island

- Set Net Prohibition (in force 1 Oct)
- Marine Reserve

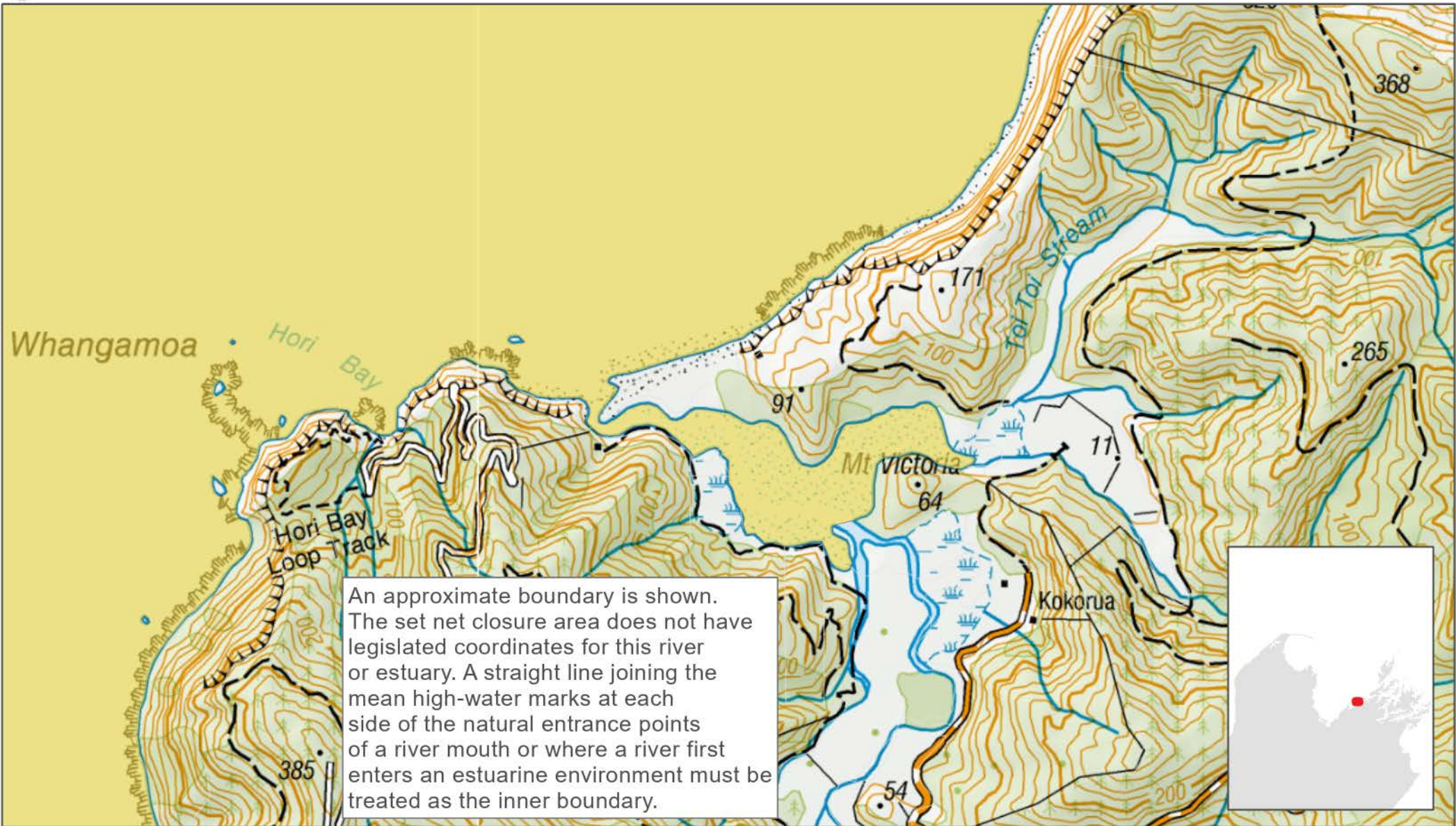


Date: 25/09/2020
Produced by: Spatial Intelligence
Reference: r200203
Coordinate System: NZTM

Data Attribution:
This map uses data sourced from LINZ under CC-BY 4.0.

Disclaimer: This map and all information accompanying it (the "Map") is intended to be used as a guide only, in conjunction with other data sources and methods, and should only be used for the purpose for which it was developed. The information shown in this Map is based on a summary of data obtained from various sources. While all reasonable measures have been taken to ensure the accuracy of the Map, MPI: (a) gives no warranty or representation in relation to the accuracy, completeness, reliability or fitness for purpose of the Map; and (b) accepts no liability whatsoever in relation to any loss, damage or other costs relating to any person's use of the Map, including but not limited to any compilations, derivative works or modifications of the Map. Crown copyright ©. This map is subject to Crown copyright administered by Ministry for Primary Industries (MPI).

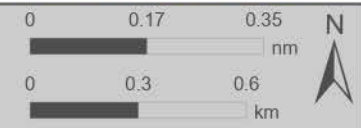
Disclaimer: This map and all information accompanying it (the "Map") is intended to be used only in conjunction with other data sources and methods, and should only be used for the purpose for which it was developed. The information shown in this Map is based on a summary of data obtained from various sources. While all reasonable measures have been taken to ensure the accuracy of the Map, MPI: (a) gives no warranty or representation in relation to the accuracy, completeness, reliability or fitness for purpose of the Map; and (b) accepts no liability whatsoever in relation to any loss, damage or other costs relating to any person's use of the Map, including but not limited to any compilations, derivative works or modifications of the Map. Crown copyright ©. This map is subject to Crown copyright administered by Ministry for Primary Industries (MPI).



An approximate boundary is shown. The set net closure area does not have legislated coordinates for this river or estuary. A straight line joining the mean high-water marks at each side of the natural entrance points of a river mouth or where a river first enters an estuarine environment must be treated as the inner boundary.

Whangamoa River

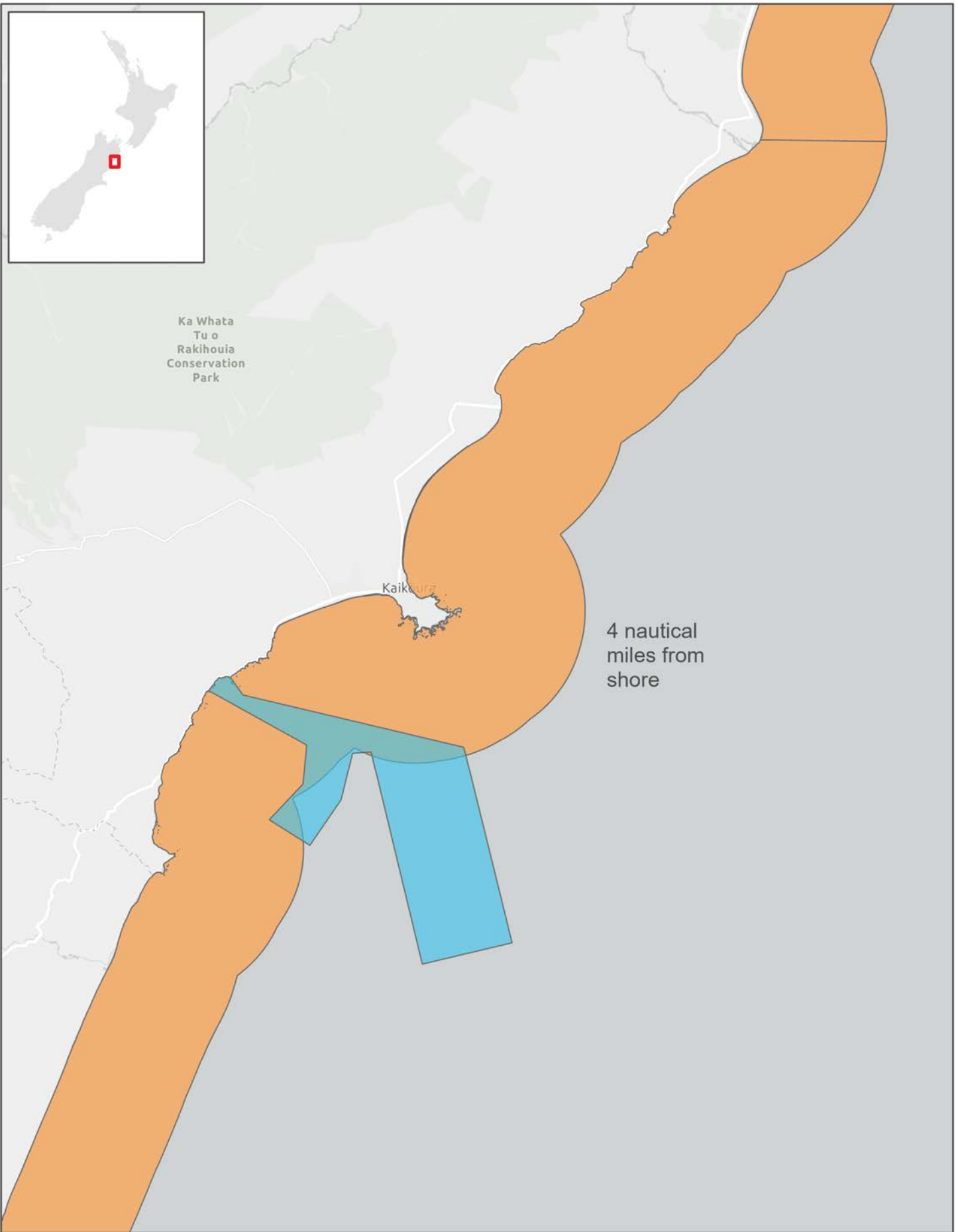
Set Net Prohibition (in force 1 Oct)



Date: 25/09/2020
Produced by: Spatial Intelligence
Reference: r200203
Coordinate System: NZTM


1:21,000
Data Attribution:
This map uses data sourced from LINZ under CC-BY 4.0.

Disclaimer: This map and all information accompanying it (the "Map") is intended to be used as a guide only, in conjunction with other data sources and methods, and should only be used for the purpose for which it was developed. The information shown in this Map is based on a summary of data obtained from various sources. While all reasonable measures have been taken to ensure the accuracy of the Map, MPI; (a) gives no warranty or representation in relation to the accuracy, completeness, reliability or fitness for purpose of the Map; and (b) accepts no liability whatsoever in relation to any loss, damage or other costs relating to any person's use of the Map, including but not limited to any compilations, derivative works or modifications of the Map. Crown copyright ©. This map is subject to Crown copyright administered by Ministry for Primary Industries (MPI).



Amateur Set Net Restrictions: Kaikōura

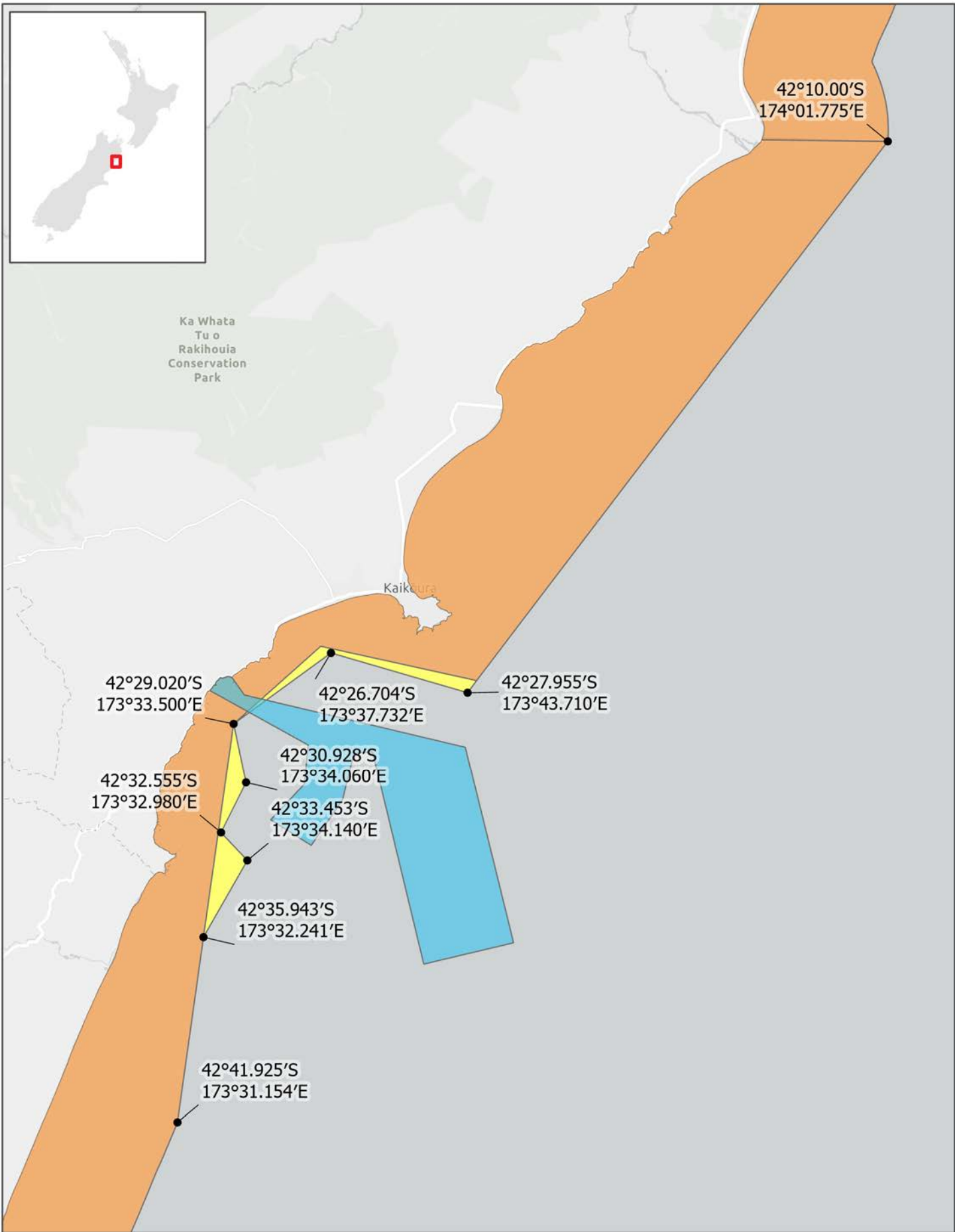
Date: 29/09/2020
Produced by: Spatial Intelligence
Reference: r200203
Coordinate System: NZTM

-  Set Net Prohibition
-  Marine Reserve



Data Attribution:
This map uses data sourced from Eagle
Technology, LINZ, StatsNZ, NIWA, Natural
Earth, © OpenStreetMap contributors.

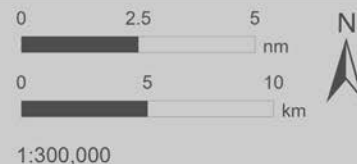
Disclaimer: This map and all information accompanying it (the "Map") is intended to be used as a guide only, in conjunction with other data sources and methods, and should only be used for the purpose for which it was developed. The information shown in this Map is based on a summary of data obtained from various sources. While all reasonable measures have been taken to ensure the accuracy of the Map, MPI; (a) gives no warranty or representation in relation to the accuracy, completeness, reliability or fitness for purpose of the Map; and (b) accepts no liability whatsoever in relation to any loss, damage or other costs relating to any person's use of the Map, including but not limited to any compilations, derivative works or modifications of the Map. Crown copyright ©. This map is subject to Crown copyright administered by Ministry for Primary Industries (MPI).



**Commercial Set Net Restrictions:
 Kaikōura**

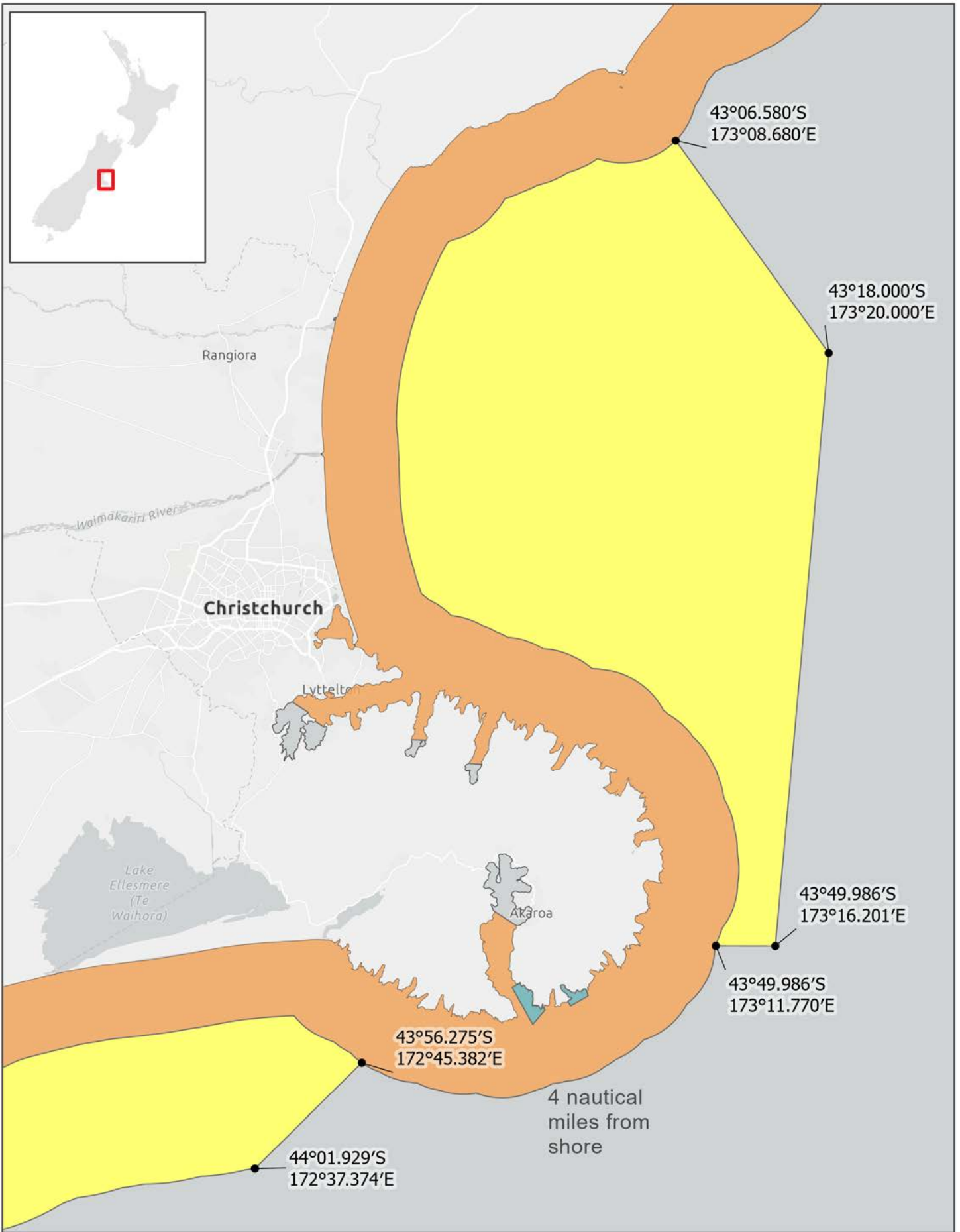
Date: 28/09/2020
 Produced by: Spatial Intelligence
 Reference: r200203
 Coordinate System: NZTM

- Legislated Coordinates
- Set Net Prohibition
- Set Net Prohibition (in force 1 Oct)
- Marine Reserve



Data Attribution:
 This map uses data sourced from Eagle Technology, LINZ, StatsNZ, NIWA, Natural Earth, © OpenStreetMap contributors.

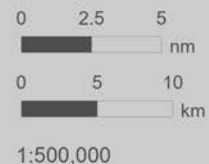
Disclaimer: This map and all information accompanying it (the "Map") is intended to be used as a guide only, in conjunction with other data sources and methods, and should only be used for the purpose for which it was developed. The information shown in this Map is based on a summary of data obtained from various sources. While all reasonable measures have been taken to ensure the accuracy of the Map, MPI: (a) gives no warranty or representation in relation to the accuracy, completeness, reliability or fitness for purpose of the Map; and (b) accepts no liability whatsoever in relation to any loss, damage or other costs relating to any person's use of the Map, including but not limited to any compilations, derivative works or modifications of the Map. Crown copyright ©. This map is subject to Crown copyright administered by Ministry for Primary Industries (MPI).



Set Net Restrictions: Pegasus Bay / Banks Peninsula

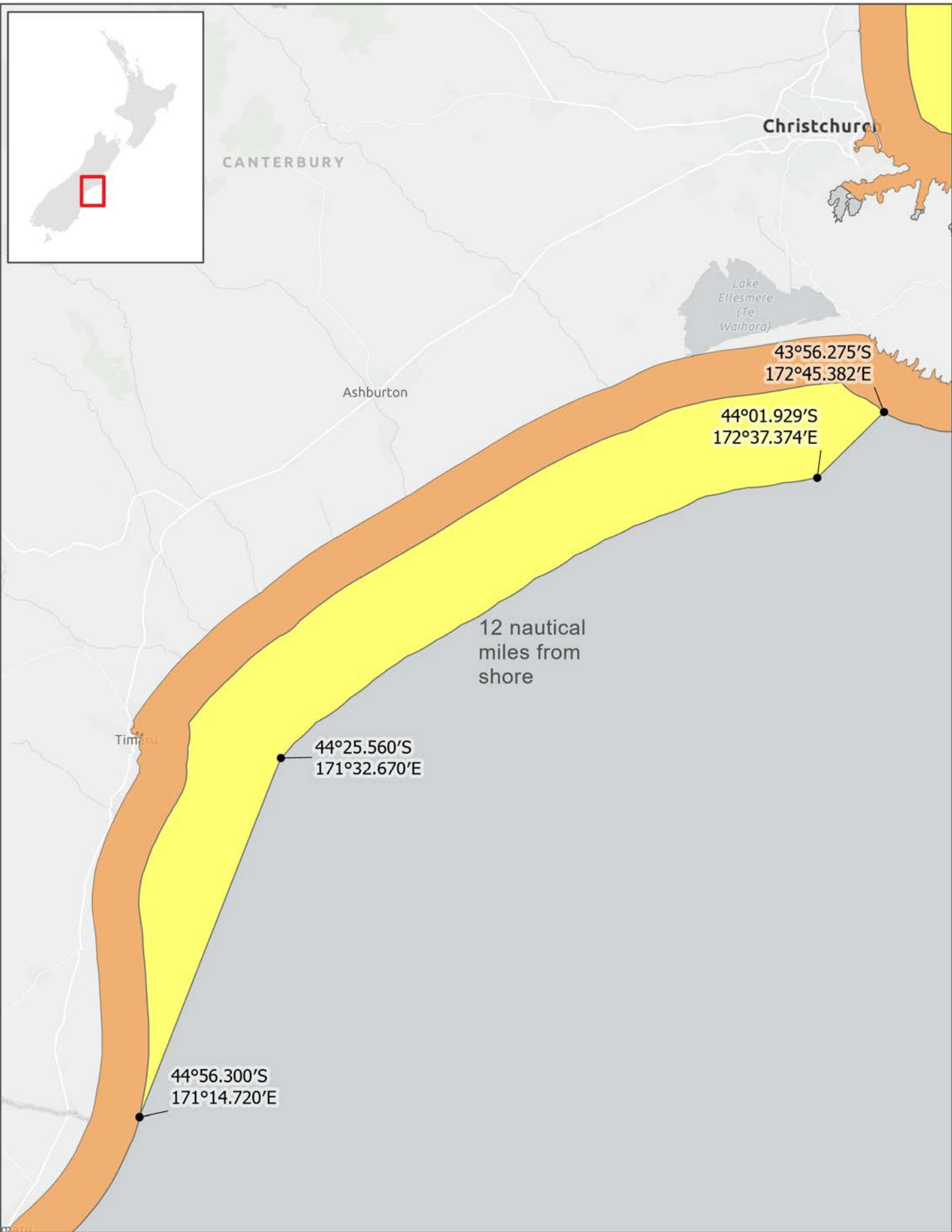
Date: 29/09/2020
Produced by: Spatial Intelligence
Reference: r200203
Coordinate System: NZTM

- Legislated Coordinates
- Set Net Prohibition
- Set Net Prohibition (in force 1 Oct)
- Marine Reserve



Data Attribution:
This map uses data sourced from Eagle Technology, LINZ, StatsNZ, NIWA, Natural Earth, © OpenStreetMap contributors.

Disclaimer: This map and all information accompanying it (the "Map") is intended to be used as a guide only, in conjunction with other data sources and methods, and should only be used for the purpose for which it was developed. The information shown in this Map is based on a summary of data obtained from various sources. While all reasonable measures have been taken to ensure the accuracy of the Map, MPI: (a) gives no warranty or representation in relation to the accuracy, completeness, reliability or fitness for purpose of the Map; and (b) accepts no liability whatsoever in relation to any loss, damage or other costs relating to any person's use of the Map, including but not limited to any compilations, derivative works or modifications of the Map. Crown copyright ©. This map is subject to Crown copyright administered by Ministry for Primary Industries (MPI).



Set Net Restrictions: South Canterbury Bight

Date: 29/09/2020
Produced by: Spatial Intelligence
Reference: r200203
Coordinate System: NZTM

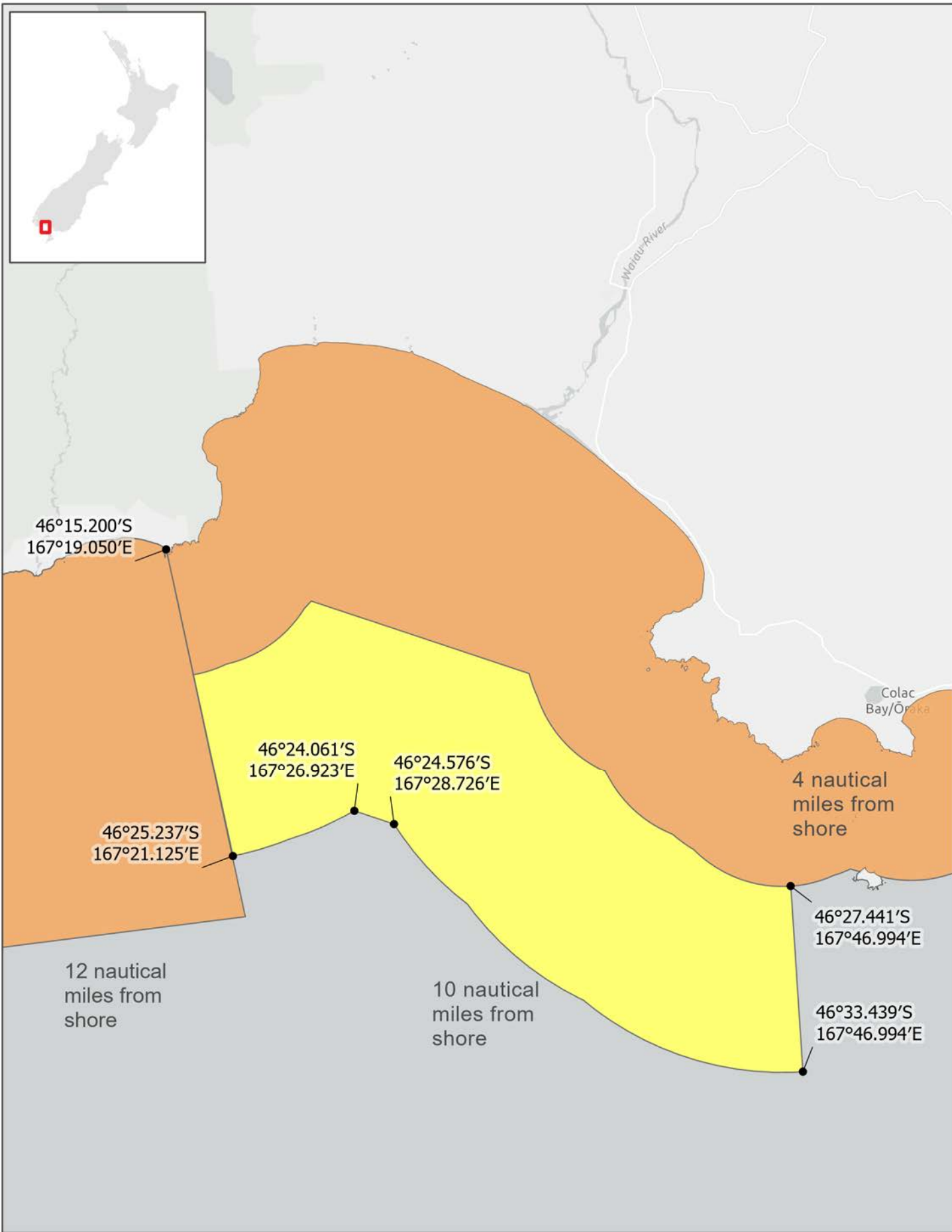
- Legislated Coordinates
- Set Net Prohibition
- Set Net Prohibition (in force 1 Oct)

0 2.5 5
nm
0 5 10
km
1:800,000



Data Attribution:
This map uses data sourced from Eagle Technology, LINZ, StatsNZ, NIWA, Natural Earth, © OpenStreetMap contributors.

Disclaimer: This map and all information accompanying it (the "Map") is intended to be used as a guide only, in conjunction with other data sources and methods, and should only be used for the purpose for which it was developed. The information shown in this Map is based on a summary of data obtained from various sources. While all reasonable measures have been taken to ensure the accuracy of the Map, MPI; (a) gives no warranty or representation in relation to the accuracy, completeness, reliability or fitness for purpose of the Map; and (b) accepts no liability whatsoever in relation to any loss, damage or other costs relating to any person's use of the Map, including but not limited to any compilations, derivative works or modifications of the Map. Crown copyright ©. This map is subject to Crown copyright administered by Ministry for Primary Industries (MPI).



**Amateur Set Net Restrictions:
Te Waewae Bay**

● Legislated Coordinates

■ Set Net Prohibition

■ Set Net Prohibition (in force 1 Oct)

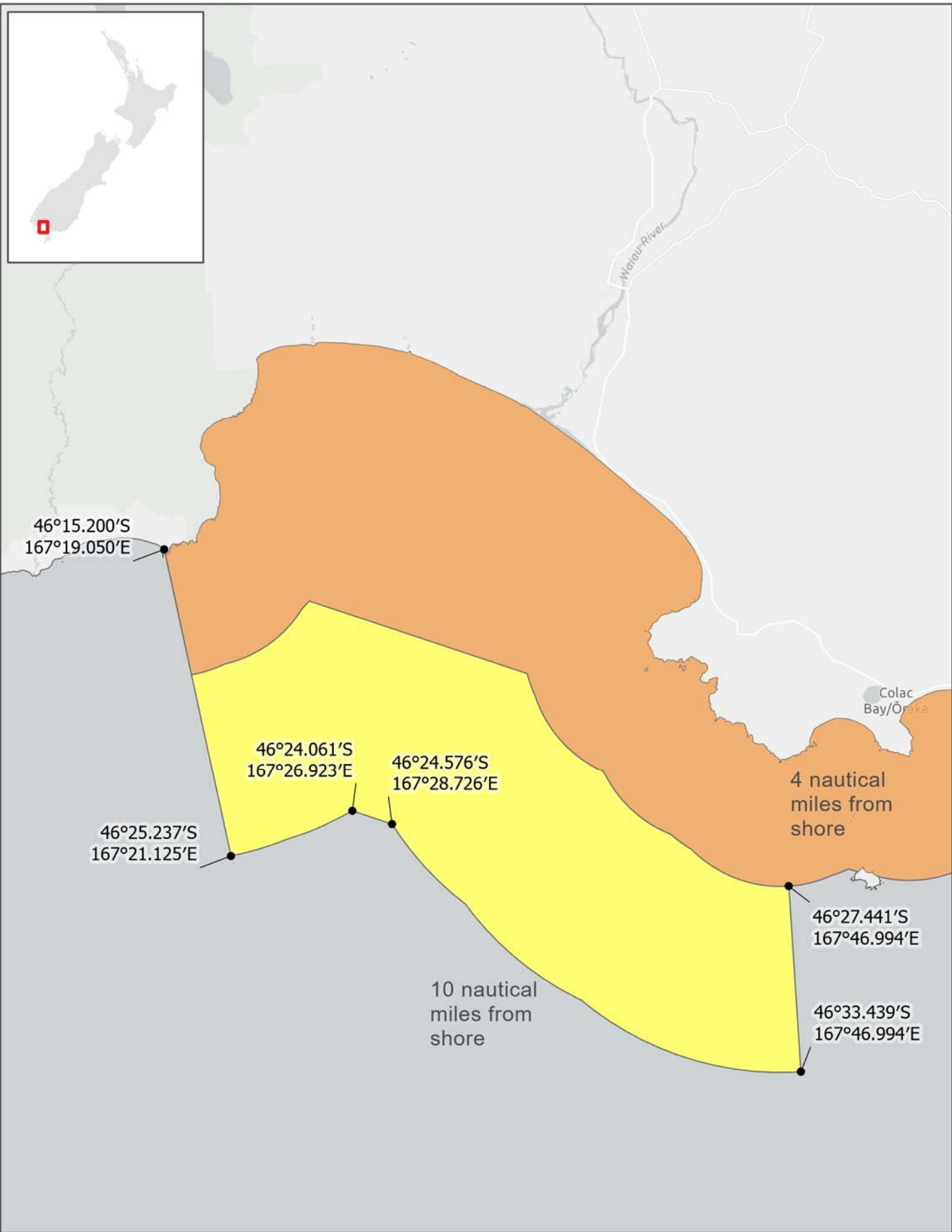
Date: 28/09/2020
Produced by: Spatial Intelligence
Reference: r200203
Coordinate System: NZTM

0 2.5 5 nm
0 5 10 km

1:300,000

Data Attribution:
This map uses data sourced from Eagle Technology, LINZ, StatsNZ, NIWA, Natural Earth, © OpenStreetMap contributors.

Disclaimer: This map and all information accompanying it (the "Map") is intended to be used as a guide only, in conjunction with other data sources and methods, and should only be used for the purpose for which it was developed. The information shown in this Map is based on a summary of data obtained from various sources. While all reasonable measures have been taken to ensure the accuracy of the Map, MPI; (a) gives no warranty or representation in relation to the accuracy, completeness, reliability or fitness for purpose of the Map; and (b) accepts no liability whatsoever in relation to any loss, damage or other costs relating to any person's use of the Map, including but not limited to any compilations, derivative works or modifications of the Map. Crown copyright ©. This map is subject to Crown copyright administered by Ministry for Primary Industries (MPI).



**Commercial Set Net Restrictions:
Te Waewae Bay**

Date: 28/09/2020
Produced by: Spatial Intelligence
Reference: r200203
Coordinate System: NZTM

- Legislated Coordinates
- Set Net Prohibition
- Set Net Prohibition (in force 1 Oct)



Data Attribution:
This map uses data sourced from Eagle Technology, LINZ, StatsNZ, NIWA, Natural Earth, © OpenStreetMap contributors.