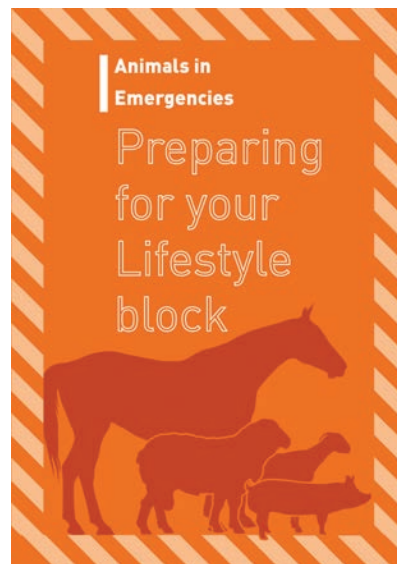




# Waikato Regional Animal Welfare Emergency Management Plan





[www.mpi.govt.nz/animals/animal-welfare/animals-in-emergencies/](http://www.mpi.govt.nz/animals/animal-welfare/animals-in-emergencies/)

## Disclaimer

While every effort has been made to ensure the information in this publication is accurate, the Ministry for Primary Industries does not accept any responsibility or liability for error of fact, omission, interpretation or opinion that may be present, nor for the consequences of any decisions based on this information.

## Publisher

Ministry for Primary Industries  
Charles Fergusson Building, 34-38 Bowen Street  
PO Box 2526, Wellington 6140, New Zealand  
Tel: 0800 00 83 33

ISBN: 978-1-99-105243-8 (online)

Cover photo credit: Bruce Fraser

31 March 2022

# Contents

<b>Introduction</b>	<b>2</b>
Purpose	2
Scope of plan	2
Roles and responsibilities	2
Guiding principles	3
Costs	4
Exercise and review	4
<b>The Waikato Region</b>	<b>5</b>
Summary	5
Animals	5
Our hazards	7
<b>Readiness</b>	<b>9</b>
Animal welfare emergency management framework	10
Community information and education	11
<b>Response</b>	<b>12</b>
Activation	12
Needs assessment	12
Responsibility for the response	13
Public information management	14
Intelligence	15
Operational documentation	15
Response arrangements	15
<b>Recovery</b>	<b>19</b>
Responsibility for recovery	19
<b>Associated Documents</b>	<b>20</b>
<b>Appendices</b>	<b>21</b>
Appendix 1: Coordinated Incident Management System (CIMS)	21
Appendix 2: Additional support agencies	23
Appendix 3: Public resources and collateral	24
Appendix 4: Farming calendar	25
Appendix 5: Decontamination	26
Appendix 6: Veterinary clinics	27
Appendix 7: Possible temporary animal evacuation sites	34
Appendix 8: Animal registration form	36
Appendix 9: Animal welfare needs assessment questions	38
Appendix 10: Animal welfare impact report	41
Appendix 11: Animal welfare in an emergency – information for community plans	44
<b>References</b>	<b>46</b>

# Introduction

In December 2015 the Ministry for Primary Industries (MPI) was appointed, at the national and Civil Defence Emergency Management (CDEM) Group levels, as the responsible agency for the coordination of animal welfare services in an emergency. The provision and coordination of animal welfare is a subfunction of the Welfare function. More information can be found in **Appendix 1: Coordinated Incident Management System (CIMS)** (New Zealand Government, 2019).

Animals are an important part of New Zealand communities. Companion animals enrich their human owners' lives and contribute to their health and wellbeing. Livestock are a major component of primary production and the economy in New Zealand. Native animals are an integral part of the environment and biodiversity of New Zealand.

Along with humans, animals are also at risk of displacement, injury or death during emergencies. Animal ownership is well-reported to have significant impacts on human compliance with evacuations during emergencies. Experience and research, both nationally and internationally, shows that incorporating animal welfare management into emergency plans significantly improves animal and human welfare outcomes. It is an essential part of a community's resilience and recovery from a response.

The Waikato Animal Welfare Emergency Management Plan has been prepared by MPI in collaboration with CDEM Groups and animal welfare support agencies. This plan should be read in conjunction with the **Waikato CDEM Group Plan 2018-2023**.

This plan has been prepared by MPI in line with section 59 of the Civil Defence Emergency Management Act 2002.

## Purpose

The purpose of this plan is to document the Waikato regional strategic arrangements for the coordination of animal welfare services during emergencies. This is relevant to the hazards listed in the National Civil Defence Emergency Management Plan Order 2015 (CDEM Plan 2015).

The objectives of this plan are to:

- Define roles and responsibilities in the provision of animal welfare services in relation to the prevention of, preparation for, response to, and recovery from emergencies for all hazards.

- Provide a framework for animal welfare coordination between government agencies, non-government agencies, industry, private sector, the community, and owners of animals.

## Te Tiriti o Waitangi

It is essential that tangata whenua, whānau, hapū and Iwi Māori are alongside their Treaty partner while addressing animal welfare across all phases of emergency management. The mutual respect and values that gives effect to Ngā Tuhinga (articles) o Te Tiriti o Waitangi enables Treaty of Waitangi principles of partnership, participation and protection in animal welfare emergency management.

## Scope of plan

The plan covers the arrangements for animal welfare services in emergencies within the geographical boundaries of Waikato CDEM region. It is applicable to all hazards except animal and plant biosecurity. For the purposes of this plan, animals are defined by the definition as stated in section 2 of the Animal Welfare Act 1999:

This includes any live member of the animal kingdom that is:

- A mammal
- A bird
- A reptile
- An amphibian
- A fish
- An octopus, squid, crab, lobster, or crayfish
- A mammalian foetus, or avian or reptilian pre-hatched young, that is in the second half of its period of gestation or development. This includes any marsupial pouch young.

**This does not** include:

- A human being.
- Animals in the prenatal, pre-hatched, larval, or other developmental stage (unless included in the prenatal stage defined above).

## Animal welfare roles and responsibilities

All animal owners, or persons in charge of animals, should develop their own plans to care for their animals during emergencies.

The role of the animal welfare subfunction is to help provide for the needs of animals when their owners (or persons in charge) are not able to do so themselves because of the consequences of an emergency.

### Responsible agency

As prescribed in section 75 of the CDEM Plan 2015, at national and CDEM Group level, MPI is the agency responsible for:

- Coordinating the provision of the animal welfare services subfunction (including animal rescue, animal shelter, food, water, husbandry, and veterinary care and other essentials) for all animals,

including companion animals, production animals, animals in research, testing, and teaching facilities, zoo and circus animals, and wildlife.

- Coordinating the planning for animal welfare in emergencies.
- Maintaining the Government's reporting and advisory capability on animal welfare in an emergency.

### Support agencies

To provide animal welfare emergency management (AWEM) services, support from the following organisations at both the national and CDEM Group levels may be required.

**Table 1: Support agencies**

Agency	Role and Responsibilities
<b>Royal New Zealand Society for the Prevention of Cruelty to Animals (SPCA)</b>	Provide direct support and coordination services to companion animal owners to mitigate animal suffering during emergencies.
<b>New Zealand Veterinary Association (NZVA)</b>	Provide advice on where veterinary treatment and services can be obtained. Provide assistance in alleviating animal suffering through coordination of the provision of advice on feeding, relocation, or sheltering of animals during and after an emergency. Coordinate the provision of trained veterinary personnel to assist in affected areas. Ensure rapid communication of relevant information to veterinary members and branches, especially to and from affected areas.
<b>Federated Farmers</b>	Provide direct support and coordination services to commercial livestock owners to mitigate animal suffering during emergencies.
<b>Companion Animals New Zealand (CANZ)</b> <i>Previously known as NZ Companion Animal Council (NZCAC)</i>	Provide support to companion animal owners in mitigating suffering during emergencies and returning animals to their owners.
<b>Territorial Authority: Animal Control</b>	Assist animal owners with care, relocation, and housing of their animals, in response to an emergency.
<b>Ministry of Health</b>	Advise local authorities on public health issues that may result from the death and disposal of animals.

### Additional animal welfare support agencies

Additional agencies may be required at the national and CDEM Group level to provide animal welfare services (see [Appendix 2: Additional support agencies](#)).

It is recommended that each organisation with a role or responsibility under this plan has appropriate operational procedures detailing their response arrangements in accordance with this plan.

### Guiding principles

This plan aligns with the following Principles for Animal Welfare Emergency Management (AWEM), as described in [Part 2, Section 14, Animal welfare, Welfare Services in an Emergency Director's Guideline \[DGL 11/15\]](#) (Ministry of Civil Defence & Emergency Management, 2015).

Figure 1: Principles of AWEM from DGL (Ministry of Civil Defence & Emergency Management, 2015)

Principle One	Principle Two	Principle Three	Principle Four
The Animal Welfare Act 1999 states that all people who own, or are in charge of, animals have a legal obligation to meet the physical, health, and behavioural needs of those animals. These needs are fulfilled through the provision of food, water, shelter, appropriate handling, protection from injury and disease, and the opportunity to display normal patterns of behaviour. This "duty of care" applies under all circumstances including during and following an emergency.	Public education – in terms of ways that animal owners/persons in charge can prepare for an emergency, and the animal welfare actions that should be taken during response/recovery – is essential to successful animal welfare emergency management.	Animal welfare emergency management plans should take account of all animal types, and the particular needs of each animal type.	Whenever possible utilise people in animal welfare emergency management whose daily job involves working with animals.

This plan aligns with the overall welfare planning principles, as described in the Director's Guideline for Welfare Services in an Emergency (Ministry of Civil Defence & Emergency Management, 2015).

- Be based on the consequences of hazards, and community vulnerability to those hazards.
- Extend across the CDEM activities of Reduction, Readiness, Response and Recovery (4 Rs).
- Be undertaken in collaboration with welfare delivery and support agencies to ensure arrangements are aligned.
- Be driven from the delivery end (take a "bottom-up" approach).
- Address the specific needs of communities.
- Support community self-reliance and community-led response.
- Incorporate a human rights approach to meeting community need.
- Allow for flexibility in delivery.
- Be integrated with the other Coordinated Incident Management Systems (CIMS) functions, and Welfare services are supported and coordinated regionally and delivered locally.

## Costs

The CDEM Plan 2015 does not support government financial assistance for animals in response or recovery. Any costs incurred while providing animal welfare services (including food, shelter, veterinary care, evacuation, or rescue) will generally be borne by the owner, or under agreed circumstances, the agency providing the service. Support agencies providing assistance will need to meet their own costs.

## Exercise and review

MPI will regularly test and exercise its response and recovery arrangements and participate in the National CDEM Exercise Programme.

Reviews of this plan will be conducted every five years at a minimum.

# The Waikato Region

## Summary

The Waikato region covers 23,900 km<sup>2</sup> south of Auckland in the North Island and has a population of 458,202 (Stats NZ, 2018). The region encompasses all or part of eleven territorial authorities. Agriculture (mostly dairy cattle farming) is an important industry in this region and contributes to 7.9% of the region's gross domestic product (Stats NZ, 2021). It is estimated that 70% of regional North Island households own at least one companion animal (Companion Animals NZ, 2020). While much of Waikato's native forest has been cleared for farming, the region has some native species in wetlands and near the coast.

Many of these animals (including pets, assistance animals, livestock and wildlife) are at risk during emergencies. Displacement, injury, or death may occur due to major emergencies such as earthquakes, fires, floods, extreme weather, tsunamis, volcanoes, or spills of hazardous materials.

The human-animal bond is complex and, often, strong. The accidental loss, injury or death of animals is not only a tragedy but can have a lasting impact on people's emotional and financial recovery from an emergency event. Animal owners and managers must take responsibility to ensure they are well-prepared to manage their animals appropriately in emergencies. This will improve outcomes for animals, animal owners, and the wider Waikato community.

## Animals

### Companion animals

Of the 164,916 households in Waikato, approximately 115,000 households will own at least one companion animal. Based on data from Companion Animals New Zealand (2020), it is estimated that Waikato has 445,000 companion animals. Of these, around 78% of dog owners and 74% of cat owners see their pet as a member of the family. The Waikato region is also well-known for horse breeding. Estimated figures of companion animals in Waikato are detailed in Table 2.

Table 2: Approximate companion animal numbers in Waikato (Companion Animals NZ, 2020)

	Household penetration (2020)	Average number per home	Approximate total Waikato
Birds	6%	5.2	50,000
Cats	48%	1.7	130,000
Dogs	36%	1.4	80,000
Fish	10%	8.9	150,000
Horses/Ponies	1.8%	2.5	7,000
Rabbits	2.8%	2.4	11,000
Rats, mice, guinea pig etc	2.1%	3.2	11,000
Reptile	1.5%	2.6	6,000
Total	70%	-	445,000

Emergency planning for animals should happen at a household, community, local, regional, and national level. Plans are an important part of a community's readiness and must consider animals that may be injured, stray, lost, displaced, or stranded. Additional information can found at [MPI - animals in emergencies](#).

Information about Waikato's temporary animal housing facilities and veterinary clinics is included in the appendices to this plan.

### Production animals

Agriculture is an important part of Waikato's economy, and much of the region's native forests and wetlands were converted to farmland. Given the ideal conditions for cows, Waikato is known for dairy farming. Other types of farm are spread throughout Waikato – the numbers of animals on these farms is detailed in Table 3. Waikato has a number of farms where animals, such as poultry, are housed in barns or buildings. These farms are particularly reliant on lifeline utilities to operate and need careful management during an emergency to ensure biosecurity measures are adhered to.

**Table 3: Approximate production animal numbers in Waikato**

Type of production animal	Number
Dairy cattle	1,767,000
Sheep	1,407,000
Beef cattle	540,000
Deer	70,000
Pigs	21,900
Total	3,805,900

**Table 4: Additional farm types in Waikato (populations unknown)**

Type of production animal
Alpaca
Aquaculture
Goats
Layer hens
Meat chickens

### Lifestyle block animals

Many farms throughout the Waikato region have been subdivided into lifestyle blocks of a few hectares. These farms tend to have smaller numbers of animals, but often have a larger variety of species. Owners of these properties vary from previous large-scale farmers who have downsized, to families from previously urban centres seeking out a rural lifestyle. Animals on lifestyle properties may be considered companion animals by some, and production animals by others.

While there is no data currently to quantify the number of lifestyle properties and the animals that reside in these, they represent an important area to consider during responses.

### Wildlife

While most of Waikato's native forest has been cleared for farming, some forests still remain in forest parks and mountain ranges. Some native species unique to this region include the Archey's frog, beetle species, and the Mercury Islands tusked wētā. The Waikato region also has around 30% of New Zealand's wetlands and native birds, including crakes, bitterns, and fernbirds, are common in these areas. The wetlands also provide a habitat for the endemic endangered black mudfish.

Waikato is home to the 3,400-hectare Sanctuary Mountain Maungatautari which is a pest-free, mainland ecological island with 47km of fencing. It is the largest ecological restoration project in New Zealand and provides a safe haven for many native animal species such as hihi (stitchbird).

### Zoo animal and animals in park

Waikato hosts a variety of animals in parks, including wildlife in captivity and petting zoos.

**Table 5: Zoos, and farm and petting facilities in Waikato**

Animal park	Location
Ataahua Alpacas	Hamilton
Bullswool Heritage Farm	Karangahake Gorge
Close Encounters Farm Experience	Te Kohanga
Cornerstone Alpacas	Gordonton
Hamilton Zoo	Hamilton
Huka Prawn Park	Taupō
Kaipaki Petting Farm	Waipa
Lilliput Farm Animal Park	Taupō
Mill Creek Bird and Animal Encounters	Whitianga
Otorohanga Kiwi House and Native Bird Park	Waitomo
Parana Park	Hamilton
Tongariro National Trout Centre	Hamilton
Waikato Pony Rides and Petting Zoo	Hamilton
Whiti Farm Park	Whitianga
Waitomo Caves	Waitomo

### Animals in Research, Teaching and Testing

Waikato has many facilities which may house or interact with animals used in research, testing or education. These facilities are expected to have contingency plans for emergencies as outlined in this **Good practice guide** (National Animal Ethics Advisory Committee, 2021) and it is expected that they will be self-sufficient in managing an emergency event.

## Our hazards

The Waikato CDEM Plan 2018 – 2023 (Waikato CDEM Group, 2021) analyses the level of risk of natural and technological hazards in Waikato and has rated

the hazards in Table 6 as high risk or above. This assessment is based on the incorporation of current existing reduction measures.

**Table 6: Hazards identified in Waikato rated high risk or above (Waikato CDEM Group, 2021)**

Hazard	Likelihood	Consequence	Risk
Drought	Possible	Nation	Very high
Pandemic (animal)	Possible	Nation	Very high
Pandemic (human)	Possible	Region	Very high
Tsunami	Possible	Nation	Very high
Volcanic (ashfall only)	Likely	Region	Very high
Volcanic (caldera unrest only)	Likely	Region	Very high
Earthquake	Possible	Region	High
Infrastructure failure (lifeline and technological)	Possible	Region	High
Land instability (long-term deformation)	Almost certain	Community	High
Marine oil spill	Possible	Region	High
River flooding	Possible	Region	High
Severe storm	Likely	District	High
Volcanic (caldera eruption)	Rare	Nation	High
Volcanic (eruption)	Likely	District	High

## Impacts of hazards on animal welfare

Many risks for people are also risks for animals. Animals may also suffer additional harm when emergencies impact availability of pasture and feed,

and habitats of animals. See Table 7 for some possible negative animal welfare impacts that may occur in emergencies.

**Table 7: Hazards impacts on animal welfare**

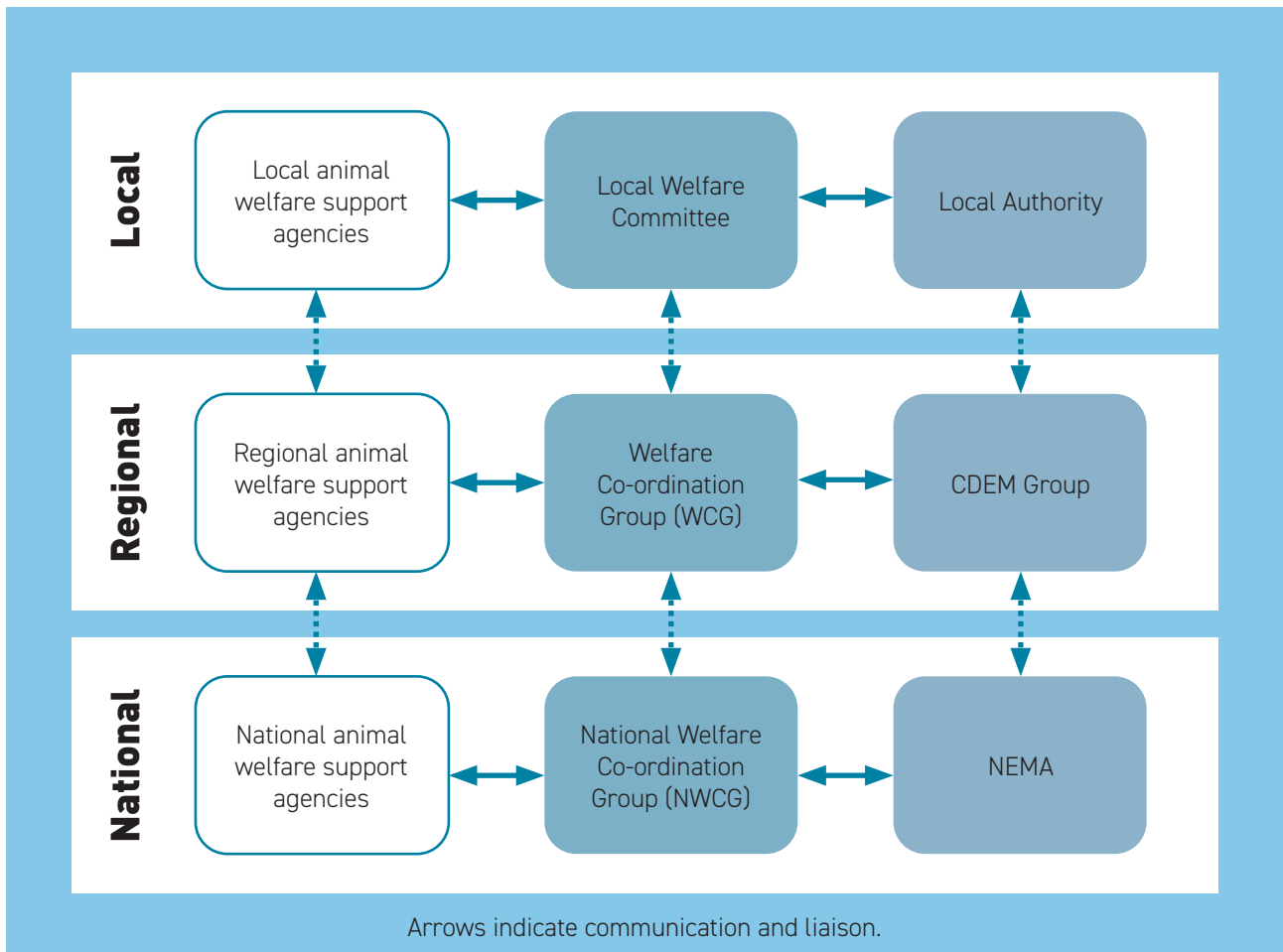
Risk	Impact	Emergencies where risk could occur
Failure of containment systems	<p>Roaming stock and companion animals may be injured or killed by vehicles and may spread diseases across animal populations.</p> <p>Captive wild animals from zoos and wildlife parks represent a significant risk if uncontained.</p> <p>Roaming animals of all kinds may cause harm or be harmed by other animals. Ensuring these animals have their needs met while uncontained is near impossible, and disease, injury, malnutrition, and dehydration is likely if not recaptured.</p>	<ul style="list-style-type: none"> <li>• Earthquake</li> <li>• Flooding</li> <li>• Tsunami</li> <li>• Landslide</li> <li>• Fire</li> <li>• Volcanic eruption</li> </ul>
Damage to food sources or availability of supplementary food	<p>Damage to pasture or feed crops has the potential to cause significant immediate and long-term negative animal welfare impacts for pastoral animals.</p> <p>Shortage or loss of supplementary feed supplies, or ability to bring into an affected area limits the options for pastoral animals.</p> <p>Damage to feed stores and roading needed for feed transport may result in animal welfare impacts for many animals, as well as creating additional stressors on owners and caregivers.</p> <p>Lack of water and water storage facilities would have important impacts on animal welfare.</p>	<ul style="list-style-type: none"> <li>• Earthquake</li> <li>• Flooding</li> <li>• Tsunami</li> <li>• Landslide</li> <li>• Fire</li> <li>• Drought</li> <li>• Volcanic eruption</li> </ul>
Damage to veterinary clinics and infrastructure for animal husbandry (e.g milking sheds)	<p>Damage to veterinary clinics impacts animal welfare by restricting critical services for animals such as emergency surgeries and critical care.</p> <p>Damage to infrastructure such as milking sheds, races, yards and stables may limit the ability to perform husbandry procedures, which could result in negative welfare impacts for the animals.</p>	<ul style="list-style-type: none"> <li>• Earthquake</li> <li>• Flooding</li> <li>• Tsunami</li> <li>• Landslide</li> <li>• Fire</li> <li>• Drought</li> <li>• Volcanic eruption</li> </ul>
Injury or death from impact/ drowning/ fire/ smoke inhalation	<p>Injuries would result in pain and distress for all animals affected, and the number of casualties may overwhelm veterinary capacity.</p>	<ul style="list-style-type: none"> <li>• Earthquake</li> <li>• Fire</li> <li>• Flooding</li> <li>• Tsunami</li> <li>• Landslide</li> <li>• Volcanic eruption</li> </ul>
Contamination from hazardous materials	<p>Hazardous materials may cause internal issues (such as gastroenteritis, damage to respiratory systems) as well as external issues such as irritation, burns, infection and sensory impacts. There may be both immediate and long-term effects.</p>	<ul style="list-style-type: none"> <li>• Earthquake</li> <li>• Flooding</li> <li>• Tsunami</li> <li>• Fire</li> <li>• Landslide</li> <li>• Volcanic eruption</li> </ul>
Insufficient personnel to care for animals needs	<p>Where there are insufficient animal caregivers for the number of animals needing care, negative animal welfare impacts may result. These impacts may include:</p> <ul style="list-style-type: none"> <li>• Lack of food and water</li> <li>• Unsanitary living conditions</li> <li>• Delayed veterinary care and husbandry procedures</li> <li>• Disease outbreaks</li> <li>• Lack of specialist resources</li> <li>• Lack of robust Business Continuity Plans in place in primary production businesses</li> </ul>	<ul style="list-style-type: none"> <li>• Earthquake</li> <li>• Tsunami</li> <li>• Fire</li> <li>• Landslide</li> <li>• Human Pandemic</li> <li>• Volcanic eruption</li> </ul>

# Readiness

This plan addresses readiness in the coordination of animal welfare in emergencies, where the capacity of the owner or carer, and community arrangements are no longer sufficient or effective. As the agency responsible for coordinating animal welfare services

in emergencies, MPI has strategic oversight of the region's animal welfare arrangements and represents animal welfare at the National Welfare Coordination Group (NWCG) and the regional CDEM Welfare Coordination Group (WCG).

Figure 2: Animal welfare coordination during readiness



## Welfare Coordination Group (WCG)

The WCG is a collective of welfare service agencies that are active at the CDEM Group level and/or the local level.

The WCG provides a mechanism for collaboration and coordination between agencies who work together to:

- Plan for and establish arrangements for the effective delivery of welfare services.
- Develop welfare work programmes.

The WCG provides planning input and coordination at the CDEM Group level, and support to local level CDEM welfare.

The WCG operates under the direction of the Coordinating Executive Group (CEG) in readiness, and the CDEM Group Controller during response. In recovery, the WCG will coordinate its activities with those of the CDEM Group Recovery Manager, and the work of any related recovery groups or teams.

The core WCG membership comprises of the agencies responsible for each of the welfare services clusters in the CDEM Group area. This includes:

- registration and needs assessment;
- inquiry;
- care and protection services for children and young people;
- psychosocial support;
- household goods and services;
- financial assistance;
- shelter and accommodation;
- animal welfare.

## Animal welfare emergency management framework

MPI, as the agency responsible for animal welfare coordination, fulfils its role via national and regional animal welfare coordinators.

### National Animal Welfare Coordinator (NAWC)

The National Animal Welfare Coordinator (NAWC) is an MPI employee responsible for leading MPI's programme for meeting its animal welfare responsibilities under the National CDEM Plan Order 2015. The role of the NAWC is set out below. The NAWC is responsible for:

- Leading the national animal welfare subfunction.
- Working with support agencies to promulgate public education awareness on readiness activities to animal owners and persons in charge.
- Leading planning arrangements at a national level.
- Coordinating the provision of animal welfare services at a national level with the National Animal Welfare Coordination Group.

- Providing technical advice on animal welfare to Regional Animal Welfare Coordinators (RAWCs) and the National Welfare Manager.
- Assisting with the promulgation of public information about what to do with animals in a response.
- Coordinating nationally on the provision of animal welfare recovery measures.
- Representing the animal welfare subfunction at the national level on the National Welfare Coordination Group (NWCG), and other committees, and providing regular updates to the NWCG, NEMA and CDEM Groups concerning the above matters.

### Regional Animal Welfare Coordinator (RAWC)

The Waikato RAWC is employed by MPI. The RAWC is responsible for:

- Leading the Regional Animal Welfare Subgroup (AWSG).
- Working with animal welfare support agencies, and other organisations, to develop and maintain an AWEM plan for the CDEM Group.
- Maintaining regional networks of other agencies, organisations, entities, businesses that are associated with animals.
- Participating in national, regional, and local level (as relevant) CDEM training and exercises.
- Providing educative material and communications about planning for animals in emergencies.
- Providing information to the MPI National Animal Welfare Coordinator (NAWC) about any animal welfare issues arising in an emergency.
- Representing the AWSG at all relevant regional level meetings with AWEM stakeholders, including meetings of the WCG.
- Coordinating animal welfare response and recovery activities.

For a full description of roles and responsibilities refer to the [Directors Guideline: Welfare Services in an Emergency \(DGL11/15 section 14.1 and 14.5\)](#).

### Regional Animal Welfare Subgroup (AWSG)

The Waikato AWSG has collective oversight of welfare services for all animals during emergencies. This ensures a holistic animal welfare service approach is provided to affected communities. It provides a mechanism for collaboration and coordination between agencies and organisations that work together in preparation for, in response to, and during recovery from emergencies, and establish networks for the effective delivery of animal welfare services.

This group may be referred to elsewhere as the Regional Animal Welfare Coordination Team (RAWCT) or the Regional Animal Welfare Cluster.

### **Waikato primary industries adverse events cluster (Waikato cluster)**

The Waikato cluster, led by the Waikato Rural Support Trust (RST), helps plan, coordinate and deliver welfare services to the rural sector during an emergency. The specific focus of the Waikato cluster is the rural communities across the region. Membership in the Waikato cluster enables agencies to understand their roles and responsibilities across the 4 Rs under the local and group welfare plan, plan for emergency events and build relationships with other rural stakeholders.

This group may be referred to elsewhere as Rural Coordination Group (RCG), Rural Cluster or Rural Advisory Group (RAG).

## **Community information and education**

MPI maintains publications to assist in community education for animal welfare in emergencies, which are available on the **MPI AWEM website**. MPI will collaborate with the organisations in agreement, under the plan, to develop a suite of tools and information to assist in preparing for animal welfare in emergencies.

During periods where there is a very high or extreme likelihood of an emergency occurring, such as an impending weather event, MPI will liaise with the relevant lead agency, and the organisations in agreement under this plan, to share situational information and promote proactive preparation for animal welfare management. Further resources are located in **Appendix 3: Public Resources and Collateral**.

# Response

## Activation

Where maintaining good animal welfare is beyond the capability of the owners or carers, and that of any local arrangements implemented by the relevant organisation, the lead agency may determine the need to engage the arrangements under this plan.

When the Welfare function has been established at the Emergency Coordination Centre (ECC) or Emergency Operations Centre (EOC), the Controller, in collaboration with the Welfare lead, may make a request to the MPI animal welfare representative to engage the arrangements under this plan.

All AWEM concerns or emergencies should be communicated between the RAWC and the Welfare Manager regardless of the size or nature of the incident or whether a state of emergency is declared. If an animal welfare response is required, this will be the final decision of the Controller.

## Needs assessment

Needs assessment is the systematic process of analysing, prioritising and understanding the interdependencies of the identified needs of affected people and animals. Needs identification involves identifying the immediate and ongoing needs of people and animals affected by an incident to inform response and recovery activities. Identification of immediate needs can come from a range of sources. Needs identification and assessment requests for animal welfare will be assigned to MPI to coordinate. See [Appendix 9: Animal welfare needs assessment questions](#).

Figure 3: MPI levels of response activation

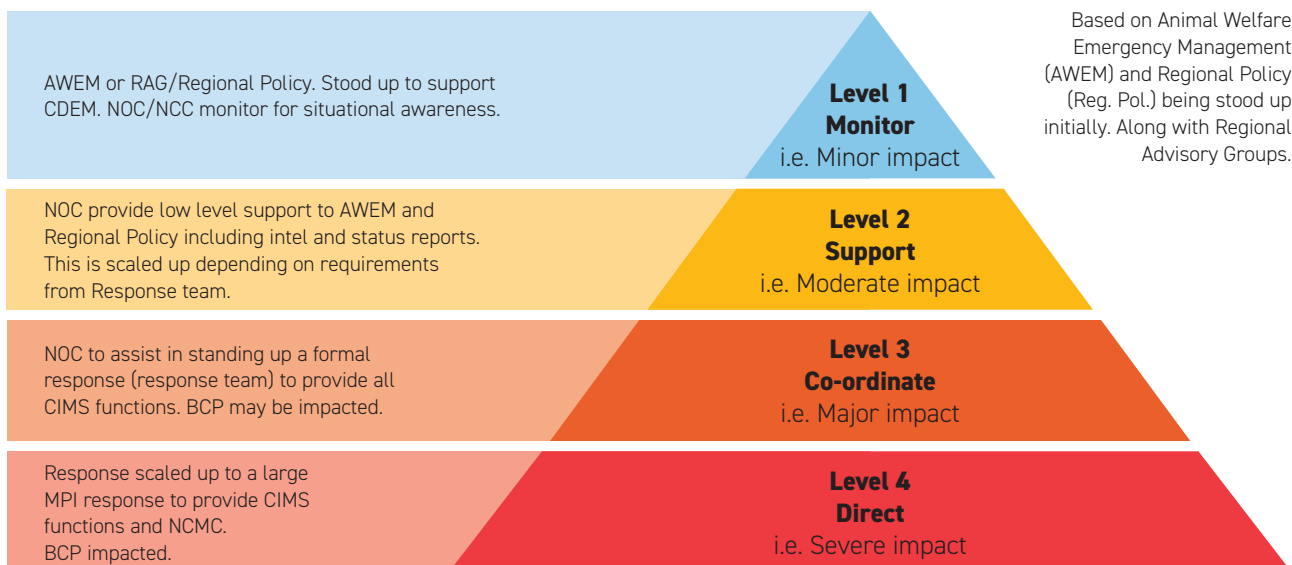
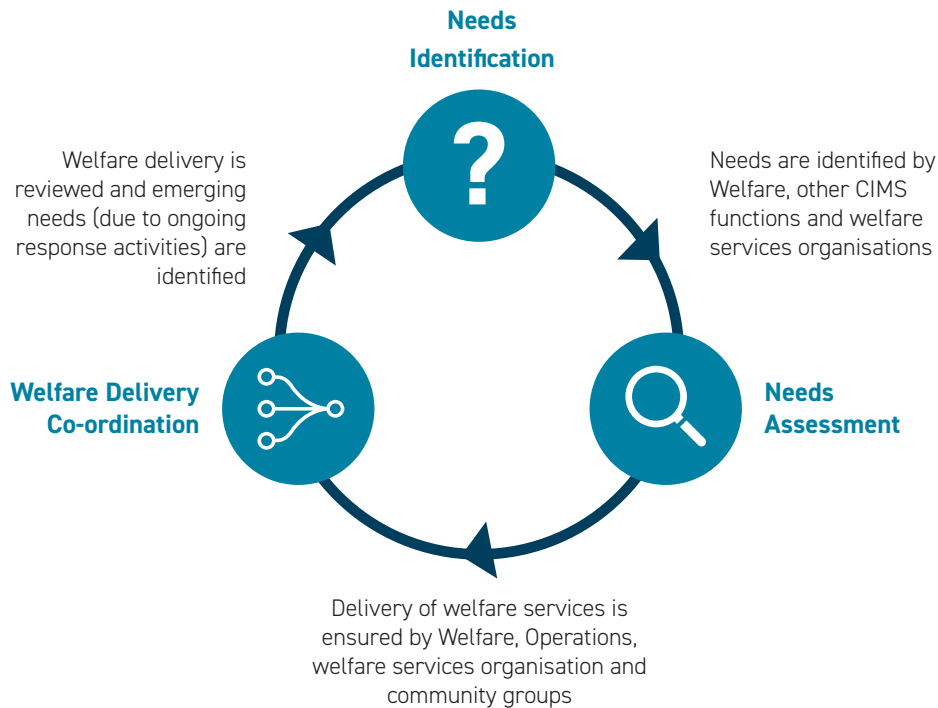


Figure 4: The welfare cycle retrieved from Coordinated Incident Management System (CIMS) Third edition (New Zealand Government, 2019)



## Responsibility for the response

The lead agency has the authority to direct when and if, any response actions can be performed as part of the overall response to the emergency. MPI will liaise with the lead agency to coordinate the animal welfare arrangements when they are required.

### Role of MPI in response

- Liaise with the relevant lead agency at the ECC/EOC.
- Coordinate the activation of the plan.
- Contribute to public information released during the emergency.
- Provide status reports to the Welfare lead on animal welfare in the emergency.
- Provide liaison personnel to be present at the Group ECC/EOC during the response phase to provide the link from and to the AWSG.
- Communicate with the AWSG regarding activation of the plan and animal welfare services and intelligence requirements.
- Convene the AWSG and coordinate response activities with the Welfare lead and Rural advisory group including:
  - providing support and advice on transportation when evacuating animals;
  - identifying the availability of locations to house evacuated animals;
  - managing displaced or stray animals;
  - assessing and triaging evacuated and non-evacuated animals;

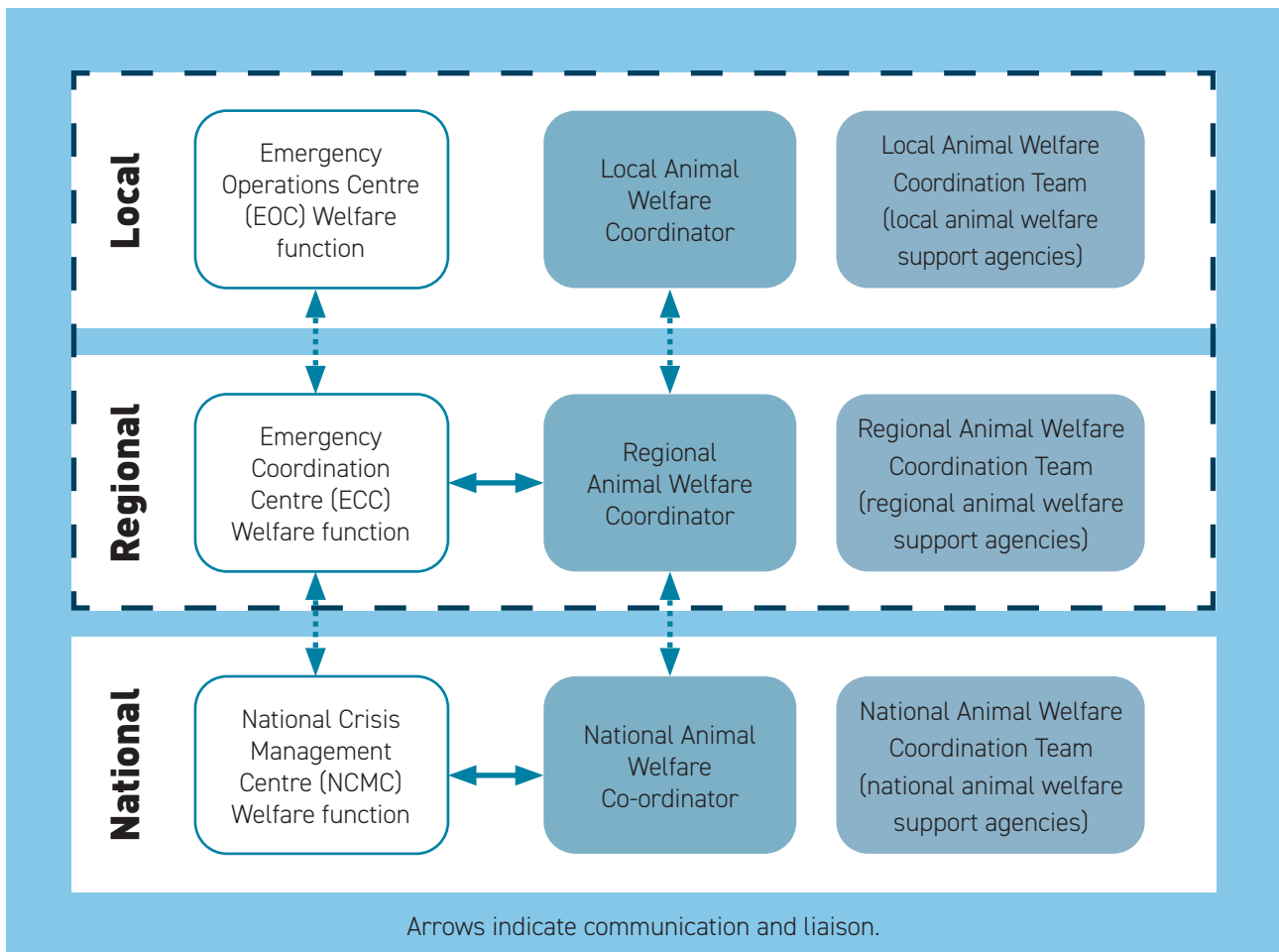
- performing and assisting with transportation for humane euthanasia or arranging for it to be performed on-site;
- advising on disposal of deceased animals;
- sourcing and providing emergency food, water, and/or shelter;
- identifying and reuniting animals with their owners or carers.
- Collaborate with the other CIMS functions on how to best utilise volunteers and donations relevant to animal welfare services.

### Role of AWSG in response

- Convene as directed by the AWSG Chair.
- Determine what functions and services are to be stood up in response to an event.
- Determine what other agencies or organisations should be temporarily included in the AWSG during response to a specific event.
- Activate and support animal welfare service coordination and delivery through the ECC animal welfare representative.
- Maintain an overview of the overall animal welfare situation and response.
- Receive reports from member agencies or organisations on progress with animal welfare assignments.
- Share and receive information from each member to enable coordination.
- Undertake tasks assigned by the Controller or ECC/EOC and respond to requests for assistance.

- Contribute relevant information and intelligence.
- Anticipate and identify priorities, and any gaps or oversights in animal welfare.
- Request any further support or resources required through the RAWC.
- Plan for and coordinate the deployment (on approval of the Controller) of animal welfare services into the affected area(s).

Figure 5: Animal welfare coordination and reporting during response



## Public information management

PIM during an emergency builds public assurance and confidence. It explains what is happening and shows that there is official awareness of the event. It informs who is leading the response, and that this is being done in a planned and coordinated way. Crucially, it also provides information and advice to the public about what people should and should not do, and where to seek help. It helps those working in the response to engage with communities and benefit from the goodwill that surfaces in emergencies.

Everyone involved in a response can support the AWEM response by ensuring agreed messages are reinforced as the opportunity arises. It is important to keep up to date with the key messages as these can change, and to know where to direct people for more detail.

All requests from the media must be referred to the PIM Manager. Only designated representatives can speak directly with the media about the emergency response. Animal welfare specific public messaging may include:

- Information and resources for persons evacuating with animals.
- The state of the general welfare of animals involved in the emergency.
- The locations of animals.
- The process for owners to find and reunite with their animals.

MPI may address the public and the media directly in relation to animal welfare, as agreed with the lead agency.

## Intelligence

Gathering reliable information is important to:

- Create situational awareness.
- Inform decision-making and advice about evacuating animals.
- Inform where animals could be evacuated to.
- Detail the numbers, types and locations of animals which may be affected or at risk.

Gathering information or intelligence, especially at the start of an event, can be challenging if communication systems are down. Intelligence about animal welfare may come from a variety of sources including animal welfare support agencies, social media, crowdsourcing and media.

The intelligence function and first responder agencies such as the Police and Fire and Emergency New Zealand should be encouraged to pass on any information about animals to the Welfare desk or the RAWC.

## Operational documentation

The animal welfare subfunction should ensure accurate and timely documentation is produced to allow for information sharing, record keeping, and effective handovers. Operational documentation may include:

- animal welfare impact reports (see **Appendix 10: Animal welfare impact report**)
- status reports;
- communications plan;
- health and safety plan;
- action logs;
- action plans;
- handovers;
- situation reports.

## Response arrangements

### Evacuation

The owner or carer has the responsibility to determine, where possible, if their animal(s) will be evacuated or remain on location, and plan for how this will be achieved. In an emergency, MPI will liaise with the lead agency to provide information on potential resources and advice on evacuating with animals. This may include:

- Early evacuation considerations.
- Transport services and other volunteer options.
- Locations for evacuated animals.
- Identification of animal facilities that cannot be evacuated due to logistical challenges and biosecurity requirements.

### Locations for evacuated animals

Animal owners should be encouraged to take their pets and animals to a predetermined property (such as with friends, family, or whānau) to look after their animals as this is cost effective and resource-sparing with an improved welfare outcome. If this is not feasible, pet-friendly accommodation or boarding facilities may be available and could be considered. A list of boarding facilities for pets can be found in the **Appendix 7: Possible temporary animal evacuation sites**. In circumstances where both the owner and companion animal require alternative accommodation, 'Pets Can Come Too' offers pet friendly accommodation for both the owner and companion animal.

All costs for temporary accommodation at boarding facilities will need to be met by the owner.

In the event of a major incident and/or where there is insufficient alternative accommodation available, a temporary animal shelter may need to be established to help safely manage animals. These may be associated with Civil Defence Centres or separate sites. While it is well known that it is preferable to house evacuated people together with their animals, this may not be logistically possible, and it may be more realistic to establish a single site for animals. The decision to set up a temporary animal shelter and its location(s) will be made by the Controller and Welfare Manager with advice from MPI and relevant support agencies. A number of factors need to be considered for the decision to set up a temporary animal shelter such as:

- Who is going to pay?
- Who is going to run the facility?
- The logistics of setting up a shelter including how animals will be admitted and registered (see **Appendix 8: Animal registration form**).
- Ensuring the previously identified sites are still available and have not been impacted by the event.

MPI will coordinate with the lead agency and animal support agencies to advise the public of locations to house evacuated animals if available.

Certified disability assist dogs listed in the Dog Control Act 1996 are granted special rights and are legally entitled to public access. They cannot be excluded from public facilities or public transport.

## Non-evacuated animals

Where animals are not evacuated, it is critical to conduct the following where applicable:

- timely assessment;
- provision of treatment;
- removal or rescue;
- routine care;
- humane euthanasia;
- carcass disposal.

Escaped, released or stray animals evading a hazard can pose a risk to people, other animals, property, and themselves.

Access to impacted and cordoned areas to undertake assessment and management of animals is at the discretion of the Controller.

Access to impacted areas may not be permitted to the public for a protracted time. In such circumstances, MPI will liaise with the lead agency to issue access through cordons to address animal welfare considerations in conjunction with the Operations function.

MPI will coordinate the deployment of resources to perform these tasks including:

- Assessment of impacted animals.
- Prioritisation (triage) of the welfare needs of animals.
- Provision of a welfare impact assessment to assist the lead agency situational awareness (see **Appendix 10: Animal welfare impact report**).
- Inclusion of animal welfare considerations in the ongoing response and recovery operations.

## Veterinary care and treatment

Animal owners should be encouraged to seek veterinary attention from their own veterinarian where possible if their animals need to be treated because of the emergency event. An example of this may be an animal suffering from burns from a fire event. If they don't have a veterinarian, or their own veterinarian is not available, they may look at the NZVA website or **Appendix 6: Veterinary Clinics** to find a list of local veterinary clinics.

Veterinarians may be required to treat animals housed at Civil Defence Centres or temporary animal shelters. This should be requested through the national representative of the NZVA via the RAWC and a roster should be implemented. Cost of veterinary treatment lies with the owner or carer of the animals.

Veterinary clinics may be able to provide temporary accommodation to evacuated animals, especially small

animals like cats. Any costs of accommodation are borne by the owner or carer of the animals.

Veterinary clinics may be prepared to act as collection and distribution points for pet food. Veterinary clinics are generally willing to assist with public information messaging before and during a response.

## Euthanasia

Where the owner or carer is unable to arrange humane euthanasia, and the animal has little to no chance of survival or continues to suffer harm if it remains alive, MPI will liaise with the owner and inform the lead agency to facilitate arrangements for humane euthanasia. Actions may include:

- Providing advice on the euthanasia of an animal or animals.
- Providing advice on the fitness of an animal for transport.
- Identifying suitably trained and equipped personnel to assist.
- Identifying suitable resources to assist.
- Facilitating restricted access for the purpose of transportation or on-site humane euthanasia.

## Disposal

MPI will coordinate with the lead agency and territorial authorities to provide advice on the timely and appropriate disposal of animal carcasses during an emergency and ensure disposal complies with the standards and regulations in place. Under section 85(g) of the CDEM Act, while a state of emergency is in force, CDEM Groups can undertake emergency measures for the disposal of dead animals if it is satisfied that the measures are urgent and necessary in the interests of public health.

The lead agency and MPI will work with local iwi to ensure tikanga practices are met in the event of large on-site deaths, burials, or other forms of carcass disposal.

The Ministry of Health is a support agency. They should be consulted regarding any public health issues that could result from the death or disposal of large numbers of animals.

## Provision of emergency food, water and shelter for animals

Emergencies may affect the supply and quality of water, pasture, and other sources of food usually available to animals. This is particularly significant for non-evacuated animals located within the impacted area. During the response phase, MPI and support agencies

will coordinate, in liaison with the lead agency, the provision of emergency food and water by:

- Identifying animals requiring access to food and water in the impact area as part of the animal welfare impact report.
- Identifying resources required to deliver food and water.
- Providing information to the lead agency on priority infrastructure repairs required to reinstate or preserve stock water supply.
- Facilitating restricted access for the purpose of assessment and delivery of emergency food and water supply.
- Liaising with local organisations to identify evacuated animals requiring access to emergency food and water.
- Identifying potential sources of food and water including depots, distribution centres and water.
- Coordinating donations of food and other resources.
- Identifying possible animal welfare impacts of water contamination.

The allocation of food and water will aim to meet animals' basic nutritional requirements. In situations where the minimum requirements of an affected animal are unlikely to be met, consideration should be given to relocation, rehoming, sale, adoption, or humane euthanasia where applicable.

Shelter for animals located within the impacted area may be significantly affected. During the response phase, MPI will coordinate, in liaison with the lead agency, the provision of emergency shelter.

### Reunification of animals with owners or carers

MPI will coordinate with support agencies the delivery of animal identification and reunification of displaced or stray animals as soon as practicable during or after an emergency.

### Lifeline services

Lifeline services such as power, water, and roading infrastructure are critical for production animal systems. Power may be needed for milking sheds, pumping water, feeding, heating and ventilation systems. Owners should have their own auxiliary systems in place such as generators under their business continuity arrangements, but in circumstances of severe damage or prolonged effects, a regional support response may be required. The Operations and Logistics functions in the ECC/EOC can assist with the coordination and sourcing of resources.

### Decontamination

Depending on the type and scope of the emergency event, decontamination of animals may be necessary. Contamination occurs when animals and equipment come into contact with chemical, biological, or radiological agents. This contact could be external or may involve ingestion of contaminated materials. For example, animals that have spent time in flood waters are at risk of exposure to chemicals that can cause burn injuries, as well as infectious diseases such as salmonellosis and leptospirosis which are transmissible to people. See **Appendix 5: Decontamination.**

### Zoonotic diseases

Zoonoses are infectious diseases that can be transferred from animals to humans or to animals from humans (reverse zoonosis). The risk of zoonotic disease may be increased in an emergency event due to:

- Responders handling animals with an unknown disease status.
- Lack of health and safety procedures in place.
- Responders with no experience of handling animals.
- Presence of waterborne organisms during flooding.
- Handling dead animals with an unknown disease status.

In addition, there are physical (non-infectious) risks to responders from handling animals that are impacted by the event and could be frightened, trapped, or roaming.

Responders handling animals can reduce exposure by wearing protective clothing (such as facemasks, gloves, overalls, hard hat, goggles). A health and safety plan should be written for each event. Responders inexperienced in handling animals should not handle animals on their own and must have the assistance of an experienced person.

The Ministry of Health will lead any activities associated with managing zoonotic risks (such as that from salmonellosis, leptospirosis, anthrax) to the public and to responders. The lead agency and the AWSG will work with the local District Health Board (representing the Ministry of Health) to comply with the standards and regulations in place.

## Psychosocial support

The loss of an animal or separation from an animal can be stressful for the owner or carer. Emergencies can disrupt the human-animal bond and may have negative psychosocial effects. MPI will link with the appropriate agencies through the WCG to provide psychosocial support to owners.

## Zoos, circuses, animals in research, teaching and testing facilities

Zoos, circuses, and animal research, teaching and testing facilities are expected to have contingency plans in place for emergencies. It is expected that they will be self-sufficient in managing an emergency event.

Following an event, MPI will contact these facilities to ascertain the animal welfare impact and conduct a needs assessment. Facilities may need assistance from MPI where there is:

- Significant breach of containment.
- Food and water supply issues.
- Accessibility constraints.
- Staff unavailability due to personal circumstances.

MPI will coordinate with the Lead Agency, to assess and if required to assist these facilities.

## Wildlife

MPI has a responsibility for wildlife in an emergency and will work closely with the Department of Conservation (DOC) where an emergency event impacts native wildlife. DOC has experience and expertise in species identification, catching, handling, transport, husbandry, and whale stranding.

The National Oiled Wildlife Response team (NOWRT) leads oiled wildlife responses across New Zealand that affect birds and other affected shoreline animals. NOWRT was established specifically for oil polluted marine environments but it may be able to provide advice about liquid chemical spills due to natural hazards.

## Volunteers and donations

During emergencies, additional resources and services may become available through charity or community groups and may include volunteering and donations of goods. MPI, with the lead agency, will coordinate arrangements to best utilise such resources and services as required.

# Recovery

## Responsibility for recovery

Where the response to an emergency management event transition to a recovery, responsibility transitions from the Controller to the Recovery Manager under the Civil Defence Emergency Management Act 2002. Many of the activities in the response section of this plan will continue into the recovery phase of emergency management, particularly in the early stages. During this time, MPI will continue to coordinate the provision of animal management measures where required, and participate in the planning and orderly transition of responsibility for ongoing animal welfare activities to the owners and carers of animals and relevant support agencies so far as they are responsible.

### Role of MPI in recovery

- To continue to coordinate the provision of animal welfare measures and contribute to public information where required [as per DGL 11/15, Part 2, Section 14].
- Participate in the development of Recovery Action Plan and the Recovery Plan as necessary.
- Provide advice to the Recovery Manager on animal welfare considerations, as part of the recovery plan.

- Liaise with relevant agencies through the exit from recovery and transition to business as usual for ongoing animal welfare activities by:
  - owners or carers
  - relevant support agencies to the extent they may be responsible.
- Participate in post-emergency debriefs and reviews, as requested.
- Undertake a review of this AWEM plan's effectiveness.

### Role of AWSG in recovery

- Continue to provide animal welfare services as required.
- Provide a liaison person to the recovery structure during the recovery phase.
- Support the networks that are delivering assistance to the community during the recovery efforts.
- Ensure relevant information is shared between stakeholders.
- Contribute to debriefs.

# Associated Documents

## National

- [CDEM - Definitions and abbreviations](#)
- [New Zealand Coordinated Incident Management System \(CIMS\) - Third Edition](#)
- [Welfare in an Emergency: Director's Guideline for CDEM Groups \[DGL 11/10\]](#)
- [Volunteer Coordination in CDEM Director's Guideline 2013](#)
- [Mass Evacuation Planning: Director's Guideline for CDEM Groups \[DGL 07/08\]](#)
- [Donated Goods Management Planning Best Practice Guide 2006](#)
- [CDEM Factsheet - Disability Assist Dogs](#)
- [New Zealand Animal Codes of Welfare](#)
- [Guide to the National Civil Defence Emergency Management Plan, Section 14 Welfare](#)
- [Animal Welfare Act 1999](#)
- [Dog Control Act 1996](#)
- [Privacy Act 2020](#)

## Regional

- [Waikato Civil Defence Emergency Management Group Plan 2018 – 2023](#)
- [Waikato CDEM Group Evacuation Plan 2012](#)
- [Waikato CDEM Group Recovery Plan 2013](#)
- [Fire Plan for Waikato, Ngā Tai ki te Puku 2021–2024](#)



# Appendices

## Appendix 1

### Coordinated Incident Management System (CIMS)

The purpose of CIMS is to enable personnel to respond effectively to incidents through appropriate coordination across functions and organisations, both vertically and horizontally (see Figure 6), by:

- Establishing common structures, functions and terminology in a framework that is flexible, modular, and scalable so that the framework can be tailored to specific circumstances.
- Providing organisations with a framework that they can use to develop their own CIMS-aligned processes and procedures that support both own-organisation responses and multi-organisation interoperability. This should reflect consideration of each organisation's unique responsibilities, resources, and legislative authority (New Zealand Government, 2019).

### Coordination

Coordination brings together response elements and resources to ensure a unified and effective response.

- Requires consolidated planning, resource coordination and integrated information sharing and communications.
- May be explicit such as briefings and plans or implicit like liaison and working together.
- Is more effective when information, intelligence and response coordination facilities are shared (when practicable) and
- Applies between functions, response levels and agencies or organisations.

The CIMS framework has several 'Functions' that sit underneath the Controller to coordinate the response. The functions may be combined depending on the scale of the response. The animal welfare subfunction sits within the Welfare function.

Figure 6: Command and Control

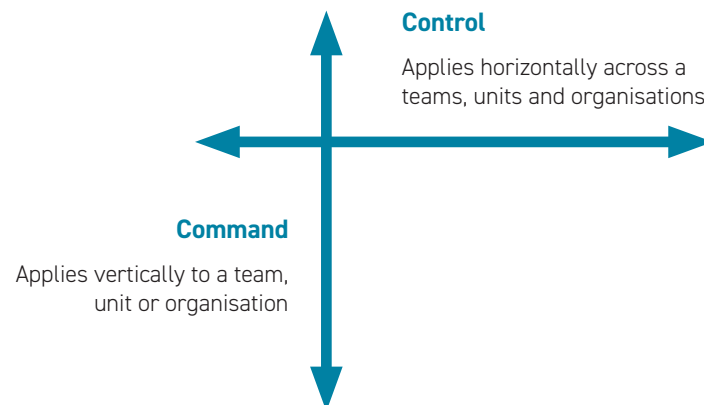


Figure 7: Simplified CIMS structure

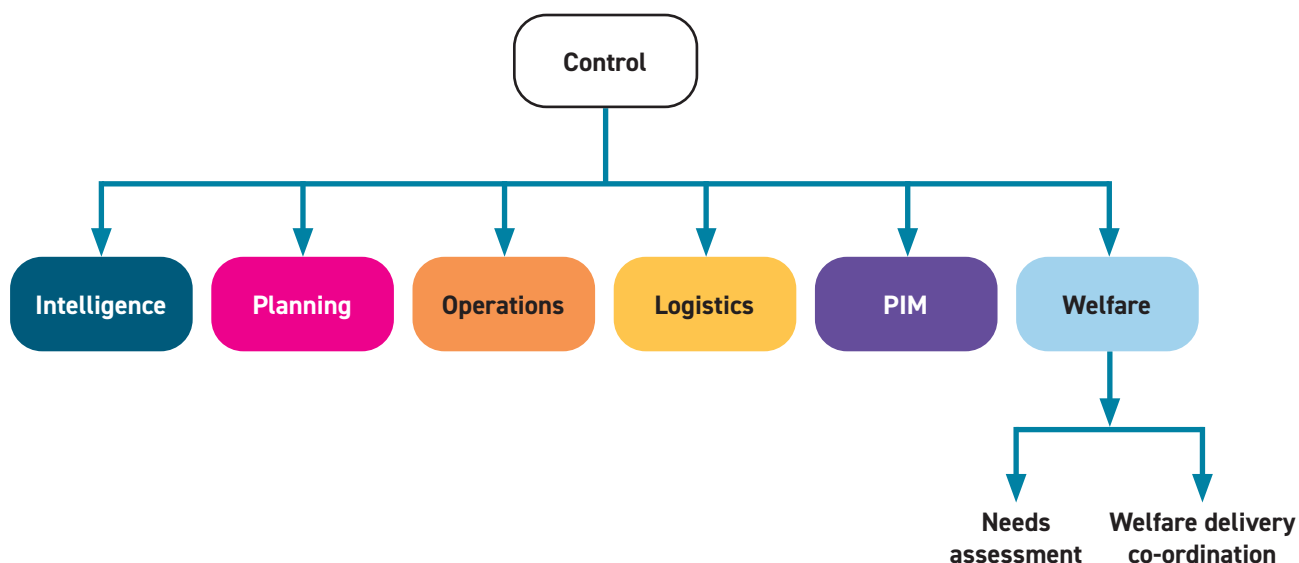


Table 8 details the roles of the functions, and how the Welfare Function (and animal welfare subfunction) may link in with the other functions.

Table 8: Responsibilities of the functions and link to animal welfare

Function	Responsibilities	Links to Welfare
Control	Controls and coordinates the response.	The animal welfare subfunction (AWSF) reports to the Welfare Manager, who reports to the Controller in a response. The Welfare function reports on the provision of welfare services and provides advice to the Controller.
Safety	Advises on measures to minimise risks to response personnel.	The AWSF can advise on specific animal related risks such as zoonotic disease and aggressive animals.
Intelligence	Collects and analyses information and produces intelligence related to context, impacts, consequences, and forecasts.	The AWSF provides intelligence to improve situational awareness and requests intel to coordinate their response.
Planning	Plans for response activities and resource needs.	The AWSF contributes toward the welfare planning which contributes to the overall plans, whether in the main action plan or as a welfare plan appendix.
Operations	Tasks, coordinates, and tracks execution of the action plan.	The Operations team assist with taskings such as needs assessments, animal evacuations and volunteer coordination. The AWSF may provide advice as needed.
Logistics	Provides personnel, equipment, supplies, facilities, and services to support response activities.	Obtains resources to support the response. Resources for AWSF may include animal feed and transport. The AWSF forecasts resource needs.
Public Information Management	Develops and delivers messages to the public and liaises with the impacted community. Develops messaging for governance when strategic communications are not activated.	The AWSF provides information to the PIM function for animal welfare. The AWSF may also request PIM includes animal welfare information in public messaging.

# Appendix 2

## Additional animal welfare support agencies

### Agency name

Department of Conservation

Dairy NZ

Beef+Lamb

Fonterra

NZ Pork

Poultry Industry Association and Egg Producers Federation

Deer Industry New Zealand

Road Transport Forum New Zealand

New Zealand Equine Health Association

Massey University School of Veterinary Science

Massey University Wildbase Hospital

Rural Advisory Group

Rural Support Trust

Helping you Help Animals (HUHA)

Animal Evac NZ

# Appendix 3

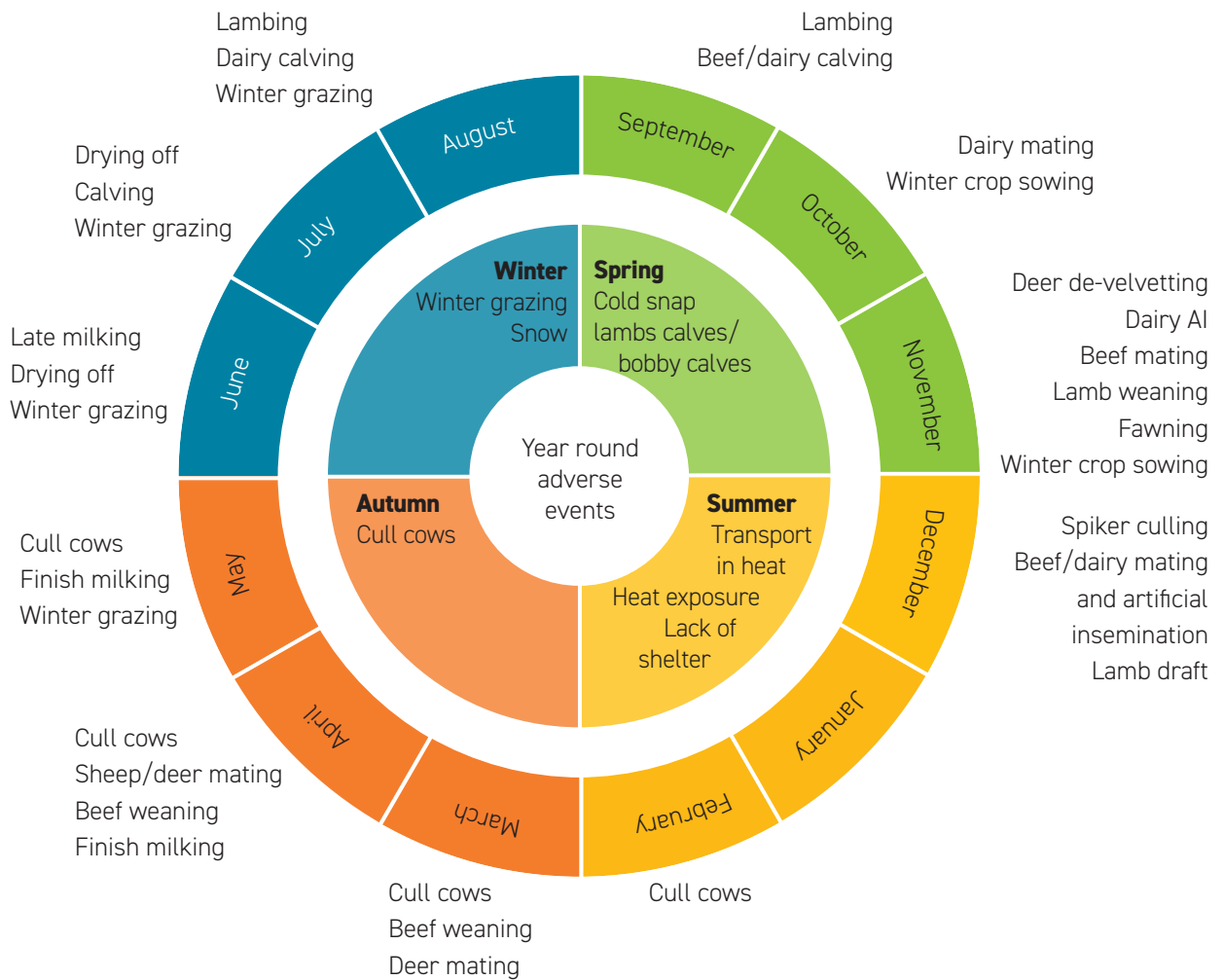
## Public resources and collateral

- [MPI - Animals in Emergencies Public Resources](#)
- [CDEM Animal Preparedness Plans](#)
- [Federated Farmers](#)
- [Beef+Lamb - Adverse Events](#)
- [NZ Animal Register - Emergency advice](#)
- [LostPet - Lost and found animal website](#)
- [World Animal Protection - Protect your pet in a disaster](#)
- [MPI FarmsOnLine - Rural Information](#)

# Appendix 4

## Farming calendar

Variations may occur in the farming calendar depending on the regional climate and location.



# Appendix 5

## Decontamination

Decontamination is the process of removing, or rendering harmless, agents (most commonly chemicals and biological materials) that have contaminated animals.

The purpose of decontamination is to limit or prevent health issues arising from contamination and to prevent secondary contamination of other animals or people and the environment including feed and water sources.

This should be performed in a separate area and all effluent and waste material from this facility must be prevented from contaminating the rest of the facility, including its feed and water sources.

CDEM and the AWSG will work with local iwi to ensure tikanga practices are met with regards to managing the risk associated with contaminated water and soil (including the disposal of soiled water following decontamination of animals).

It is recommended that decontamination procedures are performed by personnel who have had appropriate hazardous substance training such as Hazmat. This may include members of an animal rescue team or veterinary emergency response team. In situations where veterinary or other animal care personnel are unable to enter the affected area, remote assistance for on-site responders may be provided electronically. Advice can be sought from Massey University School of Veterinary Science.

Fire and Emergency New Zealand is the lead agency for containment of hazardous materials under CDEM Plan 2015. They may be a further resource to advise or assist with animal decontamination.

If owners have extricated their animals from flood waters, they should be advised to decontaminate their animals, if it is safe to do so. Decontamination advice should be included in public messaging.

# Appendix 6

## Veterinary clinics

### CareVets Chartwell

Lynden Court  
Chartwell, Hamilton  
07 855 9072  
07 854 9111  
[chartwell@carevets.co.nz](mailto:chartwell@carevets.co.nz)

### CareVets Rototuna

Rototuna Shopping Centre  
Thomas Road  
Hamilton, Rototuna  
07 855 2306  
07 855 2304  
[rototuna@carevets.co.nz](mailto:rototuna@carevets.co.nz)  
[www.carevets.co.nz](http://www.carevets.co.nz)

### Chartwell Veterinary Hospital

CareVets Hamilton (Chartwell)  
Lynden Court  
Hamilton  
07 855 9072  
07 854 9111  
[chartwell@carevets.co.nz](mailto:chartwell@carevets.co.nz)  
[www.carevets.co.nz](http://www.carevets.co.nz)

### Hamilton Veterinary Services

421 Te Rapa Road  
Waikato Equine Veterinary Centre  
Hamilton  
07 849 2963  
07 849 3023  
[michelle@wevc.co.nz](mailto:michelle@wevc.co.nz)  
[www.hamiltonvets.co.nz](http://www.hamiltonvets.co.nz)

### Pet Doctors (Hillcrest)

113 Cambridge Road  
Hamilton  
07 856 9212

### Vet SOS

384 Tristram Street  
Veterinary Specialist Orthopaedic Services  
Hamilton  
07 838 2200  
[warrick@vetsos.com](mailto:warrick@vetsos.com)

### Animates Vetcare Te Rapa

787 Te Rapa Road  
Te Rapa Vetcare (Animates)  
Te Rapa Straight  
Hamilton  
Te Rapa  
07 849 8434

### Newstead Veterinary Services

161 Morrinsville Road  
RD 4  
Hamilton  
07 856 4522  
07 856 9487  
[admin@newsteadvets.co.nz](mailto:admin@newsteadvets.co.nz)  
[www.newsteadvets.co.nz](http://www.newsteadvets.co.nz)

### Pet Doctors (Dinsdale)

42 Whatawhata Road  
Dinsdale  
Hamilton  
07 847 2669  
[support@nzpetdoctors.co.nz](mailto:support@nzpetdoctors.co.nz)

### Pet Doctors (Flagstaff)

Flagstaff Shopping Centre  
River Road  
Flagstaff  
Hamilton  
07 854 0526  
07 854 0096  
[support@nzpetdoctors.co.nz](mailto:support@nzpetdoctors.co.nz)

### Pet Doctors (Tristram Street)

384 Tristram Street  
The Pet Practice  
Hamilton  
07 838 2200  
07 838 2721  
[support@nzpetdoctors.co.nz](mailto:support@nzpetdoctors.co.nz)

### Waikato Afterhours Veterinary Hospital

576 Anglesea Street  
Hamilton  
07 839 5656  
07 839 5658  
[vet@wavh.co.nz](mailto:vet@wavh.co.nz)

### CareVets Hamilton South

149 Ohaupo Road  
Melville  
Hamilton  
07 843 0090

### Global Veterinary Services

1034 Gordonton Road  
RD 1 Hamilton  
07 210 4562  
[info@globalvetservices.co.nz](mailto:info@globalvetservices.co.nz)  
[www.globalvetservices.co.nz](http://www.globalvetservices.co.nz)

**Vetora Hamilton**

Glenview Shopping Mall  
Ohaupo Road  
Hamilton  
07 843 8822  
07 843 7321

[adam.h@vetfocus.co.nz](mailto:adam.h@vetfocus.co.nz)  
[www.vetfocus.co.nz](http://www.vetfocus.co.nz)

**Tauwhiro Animal Services**

18 Gallagher Drive  
Melville  
Hamilton  
0274 363838  
07 8392920

[kiwicabrevet@yahoo.com](mailto:kiwicabrevet@yahoo.com)

**Veterinary Referral Services**

421 Te Rapa Road  
Te Rapa  
Hamilton  
078 492 963

<http://www.vetreferral.co.nz/>

**Vetora Otorohanga**

(previously The Veterinary Centre – Otorohanga)  
24 Turongo St  
Otorohanga  
07 873 7089  
07 873 8421

[gavin.s@vetfocus.co.nz](mailto:gavin.s@vetfocus.co.nz)  
[diane.w@vetfocus.co.nz](mailto:diane.w@vetfocus.co.nz)

**VetEnt Otorohanga**

18 Tuhoro Street  
Otorohanga  
07 873 8275  
07 873 7059

[accounts@vetent.co.nz](mailto:accounts@vetent.co.nz)  
[www.vetent.co.nz](http://www.vetent.co.nz)

**Matamata Veterinary Services Ltd**

362 Hinuera Road  
Matamata  
07 888 8197  
07 888 6008

[info@matavet.co.nz](mailto:info@matavet.co.nz)  
[www.matamatavets.co.nz](http://www.matamatavets.co.nz)

**Kaimai Vets (Matamata)**

4 Tainui Street  
Matamata  
07 888 5555  
07 888 5554

[info@kaimaivets.co.nz](mailto:info@kaimaivets.co.nz)

**Landmark Vets Ltd**

9 Tui Street  
Matamata  
07 888 5555  
07 888 5554

[tearoaha@landmarkvets.co.nz](mailto:tearoaha@landmarkvets.co.nz)

**MCL Veterinary Services**

283A Mowbray Road  
RD 1 Matamata  
021 336 745

**Vet Referral Centre Ltd**

112A Burwood Road  
Matamata  
07 888 5535

**VETPlus (Taupō)**

Nukuhau Street  
Taupō  
07 376 2800  
07 378 7419

[vetplus@vetplus.co.nz](mailto:vetplus@vetplus.co.nz)  
[www.vetplus.co.nz](http://www.vetplus.co.nz)

**Taupo Veterinary Centre**

3 Oruanui Street  
Taupō  
07 378 5433  
07 378 0608

[www.tokvets.co.nz](http://www.tokvets.co.nz)

**Anexa FVC Thames**

623 Pollen Street  
Thames  
07 868 7005  
07 868 7643

[thames@anexafvc.co.nz](mailto:thames@anexafvc.co.nz)  
[www.anexafvc.co.nz](http://www.anexafvc.co.nz)

**Franklin Vets - Kopu**

14 Kopu Road  
RD 1  
Thames  
07 868 5007

[kopu@fvs.co.nz](mailto:kopu@fvs.co.nz)  
[www.franklinvets.co.nz](http://www.franklinvets.co.nz)

**IB Vet Ltd**

408 Thames Coast Road  
RD 5  
Thames  
021 190 119

[inge2you@gmail.com](mailto:inge2you@gmail.com)

**Bay of Islands Veterinary Services - Waipapa**

Shop 2

Waipapa

09 401 6654

09 401 6655

[waipapa@bayvets.co.nz](mailto:waipapa@bayvets.co.nz)

[www.bayvets.co.nz](http://www.bayvets.co.nz)

**Franklin Vets - Te Kauwhata**

91 Waerenga Road

Te Kauwhata

07 826 4838

[tekauwhata@fvs.co.nz](mailto:tekauwhata@fvs.co.nz)

[www.franklinvets.co.nz](http://www.franklinvets.co.nz)

**JBVisserVets Ltd**

47 Lorne Street

Morrinsville

07 889 0414

07 889 0415

[jbvisservets@xtra.co.nz](mailto:jbvisservets@xtra.co.nz)

**MVP Vets**

Morrinsville Veterinary Professionals

151 Thames Street

Morrinsville

07 889 1305

[mvpvets@gmail.com](mailto:mvpvets@gmail.com)

<http://mvpvets.co.nz>

**Michael Hurley & Assoc Ltd**

Brackenfield House

19 Maungatautari Road

RD 3

Cambridge

078232309

[michael.hurley@equinevetconsultants.com](mailto:michael.hurley@equinevetconsultants.com)

**Tipuwhenua Ltd**

276 Maungakawa Road

Cambridge

021 242 4949

[www.rongoawai.com](http://www.rongoawai.com)

**Shoof International Ltd**

224 Laurent Road

Cambridge

07 827 3902

[sales@shoof.co.nz](mailto:sales@shoof.co.nz)

[www.shoof.co.nz](http://www.shoof.co.nz)

**Kaipaki Veterinary Services**

Windsor Park Stud

1130 Kaipaki Road

Cambridge

07 827 6656

07 827 8262

[horses@windsorpark.co.nz](mailto:horses@windsorpark.co.nz)

**Cambridge Equine Hospital**

71 Racecourse Road

Cambridge

07 827 7097

07 827 0694

[cambridgeeh@xtra.co.nz](mailto:cambridgeeh@xtra.co.nz)

[www.horsehospital.co.nz](http://www.horsehospital.co.nz)

**Waikato Equine Veterinary Centre**

11 Pickering Road

Taumahere

RD 1

Cambridge

078275570

[admin@wevc.co.nz](mailto:admin@wevc.co.nz)

**Cambridge Equine Hospital**

71 Racecourse Road

Cambridge

07 827 7097

07 827 0694

[cambridgeeh@xtra.co.nz](mailto:cambridgeeh@xtra.co.nz)

[www.horsehospital.co.nz](http://www.horsehospital.co.nz)

**Cambridge Pet Vet**

73 Grey Street

Cambridge

07 8231126

07 8234169

[covvets@xtra.co.nz](mailto:covvets@xtra.co.nz)

**Cambridge Veterinary Services**

Wilson Street

Cambridge

07 827 7099

07 827 3756

[info@cambridgevets.co.nz](mailto:info@cambridgevets.co.nz)

[www.cambridgevets.co.nz](http://www.cambridgevets.co.nz)

**Hautapu Veterinary Clinic Ltd**

186 Hannon Road

Cambridge

07 827 6693

07 827 3938

[info@hautapuvetclinic.co.nz](mailto:info@hautapuvetclinic.co.nz)

**The Cow Vets**

1 Oliver Street

Cambridge

0508 269 838

07 823 4169

[info@thecowvets.co.nz](mailto:info@thecowvets.co.nz)

[www.thecowvets.co.nz](http://www.thecowvets.co.nz)

**Ruminant Health Solutions**

2458 Highway 22

RD 5

Tuakau

09 2333 144

**Anexa FVC Gordonton**

(formerly Chartwell Rural Vet Services Ltd)  
1126 Gordonton Road  
Morrinsville  
07 824 2103

[gordonton@anexafvc.co.nz](mailto:gordonton@anexafvc.co.nz)  
[www.anexafvc.co.nz](http://www.anexafvc.co.nz)

**Anexa FVC Huntly**

Northern Waikato Veterinary Services (Huntly)  
185 Main Street  
Huntly  
07 828 7660  
07 828 9530

[huntly@anexafvc.co.nz](mailto:huntly@anexafvc.co.nz)  
[www.anexafvc.co.nz](http://www.anexafvc.co.nz)

**Anexa FVC Maramarua**

515 Ferndale Road  
Maramarua  
09 232 5891

[maramarua@anexafvc.co.nz](mailto:maramarua@anexafvc.co.nz)  
[www.anexafvc.co.nz](http://www.anexafvc.co.nz)

**Anexa FVC Te Kauwhata**

(previously Northern Waikato Veterinary)  
22 Main Street  
Te Kauwhata  
07 826 3581  
07 826 3269

[tekauwhata@anexafvc.co.nz](mailto:tekauwhata@anexafvc.co.nz)  
[www.anexafvc.co.nz](http://www.anexafvc.co.nz)

**CareVets Pokeno**

14a Great South Road  
Pokeno  
09 283 8642  
09 283 8643

[pokeno@carevets.co.nz](mailto:pokeno@carevets.co.nz)

**Franklin Vets - Taupiri**

57A Great South Road  
Taupiri  
07 824 6836  
07 824 6856

[taupiri@fvs.co.nz](mailto:taupiri@fvs.co.nz)  
[www.franklinvets.co.nz](http://www.franklinvets.co.nz)

**Ian Scott - Veterinary Surgeon**

Bayly Road  
RD 1 Tirau  
07 883 1382

**Tirau Veterinary Centre**

Main Road  
Tirau  
07 883 1667  
07 8831 738

[tirauvetcentre@xtra.co.nz](mailto:tirauvetcentre@xtra.co.nz)

**K C Vet Services**

418 Mangaotaki Road  
RD 1 Piopio  
021 264 5771

**Crescere Agvet Ltd**

Marshall Street  
Paeroa  
021 202 6751

[shelleyhunt2@gmail.com](mailto:shelleyhunt2@gmail.com)

**Trinity Lands Limited**

10 Neal Street  
Putaruru  
07 885 1070

**Anexa FVC Ngaruawahia**

108 Great South Road  
Ngaruawahia  
07 824 8630  
07 824 8798

[ngaruawahia@anexafvc.co.nz](mailto:ngaruawahia@anexafvc.co.nz)  
[www.anexafvc.co.nz](http://www.anexafvc.co.nz)

**Whangamata Veterinary Hospital**

702 Port Rd  
Whangamata  
07 865 8109  
07 865 8109

[info@vetwhangamata.co.nz](mailto:info@vetwhangamata.co.nz)  
[www.vetwhangamata.co.nz](http://www.vetwhangamata.co.nz)

**Anexa FVC Matamata**

Animal Health Centre Waikato Inc  
23 Arawa Street  
Matamata  
07 888 8068  
07 888 8067

[matamata@anexafvc.co.nz](mailto:matamata@anexafvc.co.nz)  
[www.anexafvc.co.nz](http://www.anexafvc.co.nz)

**Anexa FVC Morrinsville**

Animal Health Centre Waikato Inc  
25 Moorhouse Street  
Morrinsville  
07 889 5159  
07 889 3681

[morrinsville@anexafvc.co.nz](mailto:morrinsville@anexafvc.co.nz)  
[www.anexafvc.co.nz](http://www.anexafvc.co.nz)

**Anexa FVC Te Aroha**

60 Rewi Street  
Te Aroha  
07 884 8014  
07 884 8883

[tearoa@anexafvc.co.nz](mailto:tearoa@anexafvc.co.nz)  
[www.anexafvc.co.nz](http://www.anexafvc.co.nz)

**Veterinary Clinic Morrinsville Ltd**

62 Moorhouse Street

Morrinsville

07 889 6738

07 889 6484

[office@vetclinicmorrinsville.co.nz](mailto:office@vetclinicmorrinsville.co.nz)

[www.morrinsvillevets.co.nz](http://www.morrinsvillevets.co.nz)

**Anexa FVC Rototuna**

105 Thomas Road

Rototuna

07 854 0772

07 854 0773

[rototuna@anexafvc.co.nz](mailto:rototuna@anexafvc.co.nz)

[www.anexafvc.co.nz](http://www.anexafvc.co.nz)

**Anexa FVC Raglan**

40 Bow Street

Raglan

07 825 8390

07 825 8901

[raglan@anexafvc.co.nz](mailto:raglan@anexafvc.co.nz)

[www.anexafvc.co.nz](http://www.anexafvc.co.nz)

**Vitality Vet Care**

91B Greenslade Road

Raglan

**VetEnt Te Kuiti**

6 Seddon Street

Te Kuiti

07 878 0020

07 878 6090

[accounts@vetent.co.nz](mailto:accounts@vetent.co.nz)

[www.vetent.co.nz](http://www.vetent.co.nz)

**Blue Mist Equine Veterinary Centre Ltd**

179 Franklin Road

RD 2 Waihi

07 863 9312

[liz@bmevc.co.nz](mailto:liz@bmevc.co.nz)

[www.bmevc.co.nz](http://www.bmevc.co.nz)

**Pet Doctors (Waihi)**

40 Kenny Street

Waihi

07 863 8684

07 863 8583

[mark@waihivets.co.nz](mailto:mark@waihivets.co.nz)

**VetEnt Te Awamutu**

49 Benson Road

Te Awamutu

07 872 0240

07 872 0246

[accounts@vetent.co.nz](mailto:accounts@vetent.co.nz)

[www.vetent.co.nz](http://www.vetent.co.nz)

**3 Stone Vets**

372 Bond Road

Te Awamutu

07 871 1799

[info@3stonevets.co.nz](mailto:info@3stonevets.co.nz)

[www.3stonevets.co.nz](http://www.3stonevets.co.nz)

**Kelly Andrews Veterinary Services Limited**

379 Fraser Street

Te Awamutu

027 380 7780

[kavetservices@gmail.com](mailto:kavetservices@gmail.com)

**VE Veterinary Services Ltd**

442 Sloane Street

Te Awamutu

07 871 3091

07 871 3166

[vet@vevets.co.nz](mailto:vets@vevets.co.nz)

[www.vevets.co.nz](http://www.vevets.co.nz)

**Vetora Waikato**

565 Mahoe Street

Te Awamutu

07 872 0004

07 871 5060

[adam.h@vetfocus.co.nz](mailto:adam.h@vetfocus.co.nz)

**Whitianga Peninsula Vets**

23 Albert Street

Whitianga

07 866 5314

[vets@whitiangavets.co.nz](mailto:vets@whitiangavets.co.nz)

**MyVet Ltd**

114a Tukere Drive,

Whangamata

07 865 6560

07 929 2864

[enquiry@myvet.co.nz](mailto:enquiry@myvet.co.nz)

**South Waikato Veterinary Services Ltd**

19 Swanston Street

Tokoroa

07 886 6413

07 886 7264

[office@swvs.co.nz](mailto:office@swvs.co.nz)

[www.swvs.co.nz](http://www.swvs.co.nz)

**Tokoroa & District Veterinary Services Ltd**

63 Ashworth Street

Tokoroa

07 886 6119

07 886 9474

[tokvets@clear.net.nz](mailto:tokvets@clear.net.nz)

[www.tokvets.co.nz](http://www.tokvets.co.nz)

**Bromley Park Hatcheries Ltd**

115 Brown Road  
Tuakau  
09 236 7011

**Te Aroha Veterinary Services**

217 Whitaker Street  
Te Aroha  
07 884 9522  
07 884 7641

[tearohavets@xtra.co.nz](mailto:tearohavets@xtra.co.nz)

[www.tearohavets.co.nz](http://www.tearohavets.co.nz)

**VETPlus (Reporoa)**

605 Settlers Road  
Reporoa  
07 333 8707  
07 333 8706

[vetplus@vetplus.co.nz](mailto:vetplus@vetplus.co.nz)

[www.vetplus.co.nz](http://www.vetplus.co.nz)

**Vetora Putaruru**

Kensington Street  
Putaruru  
07 883 7392  
07 883 7658

[gavin.s@vetfocus.co.nz](mailto:gavin.s@vetfocus.co.nz)

[www.vetfocus.co.nz](http://www.vetfocus.co.nz)

**Anexa FVC Coromandel**

105 Kapanga Road  
Coromandel  
07 866 8556  
07 866 8569

[coromandel@anexafvc.co.nz](mailto:coromandel@anexafvc.co.nz)

[www.anexafvc.co.nz](http://www.anexafvc.co.nz)

**Franklin Vets - Paeroa**

3 Puke Road  
Paeroa  
07 862 7295  
07 862 7724

[paeroavets@xtra.co.nz](mailto:paeroavets@xtra.co.nz)

**Anexa FVC Paeroa**

39 Belmont Road  
Paeroa  
07 862 8815  
07 862 7642

[paeroa@anexafvc.co.nz](mailto:paeroa@anexafvc.co.nz)

[www.anexafvc.co.nz](http://www.anexafvc.co.nz)

**Atkinson & Associates**

53 Moa Street  
Piopio  
07 877 8106  
07 877 8262

[richard@piopiovets.co.nz](mailto:richard@piopiovets.co.nz)

**Pauanui Veterinary Services**

Settlement Road  
Hikuai  
07 864 8759  
07 864 7583

[europfarm@xtra.co.nz](mailto:europfarm@xtra.co.nz)

**Anexa FVC Ngatea**

49 Orchard Road  
Ngatea  
07 867 7256  
07 867 7533

[ngatea@anexafvc.co.nz](mailto:ngatea@anexafvc.co.nz)

[www.anexafvc.co.nz](http://www.anexafvc.co.nz)

**Hauraki Veterinary Services**

87 Orchard Road  
Ngatea  
07 867 7056  
07 867 7185

[ngatea@haurakivets.co.nz](mailto:ngatea@haurakivets.co.nz)

[www.haurakivets.co.nz](http://www.haurakivets.co.nz)

# Appendix 7

## Possible temporary animal evacuation sites

### SPCA centres

#### Taupo Centre

131 Centennial Drive  
Tauhara, Taupo 3378  
07 378 4396

#### Tokoroa Centre

16 Giles Street  
Tokoroa 3420  
07 777 9090

#### Hamilton Centre

49 Northway Street  
Te Rapa, Hamilton 3200  
07 847 4868

#### Thames Centre

321 Ngati Maru Highway  
Thames 3578  
07 868 6830

### Boarding kennels and catteries

#### Allbreeds Paws & Claws Accommodation

28 Foster Road  
Hampton Downs, Te Kauwhata  
09 232 6897

#### Animal Lodge & Cattery

153 Puketaha Road  
Rototuna, Waikato  
07 855 4952

#### Big Paw Pet Lodge

7162 State Highway 27  
Waharoa 3474  
07 888 5673

#### Brackendell Boarding Kennels & Cattery

750 Beechey Street  
Pirongia, Te Awamutu 3802  
07 871 9735

#### Cambridge Cattery

3648 Cambridge Road  
Cambridge 3495  
07 827 7301

#### Cats on Peria 2014

121 Peria Rd  
RD2 Matamata 3472  
07 888 4228

#### Cats Pyjamas Cattery

31 Raynes Road  
Hamilton 3282  
07 843 1787

#### Coromandel Cattery

871 Tiki Quarry  
Coromandel  
07 866 8117

#### Costar Pet Lodge

349 Hauraki Road  
Thames  
07 867 5333

#### Creature Comforts Cattery

13 Kent Crescent  
Waihi  
07 863 9004

#### Downton Tabby Cats' Retreat

12 Jeffs Road  
Mangatāwhiri 2471  
09 233 6615

#### Hamilton Veterinary Services

421 Te Rapa Road  
Hamilton 3200  
07 849 2963

#### Hillgrove Cattery & Kennels

19 Blucks Road  
Otorohanga  
07 873 6003

#### Ihakara Pet Lodge

381 Beach Rd  
RD 1 Waihi 3681  
07 863 7822

#### Karapiro Pet Lodge

773 State Highway 1  
RD2 Karapiro  
Cambridge 3494  
07 827 8379

#### Katz Boarding Cattery

490 Limeworks Loop Road  
Hamilton 3285  
07 825 9144

#### Longtail Pet Motel

1416 Te Rapa Road  
Hamilton  
07 849 7357

**Mangaiti Farm Canine Boarding Kennels**

772 Thames Coast Road  
Tapu 3575  
07 866 3825

**Morrinsville Kennels & Cattery**

255 Gibbon Road  
Morrinsville  
07 889 7644

**Newstead Lodge Boarding Kennels & Cattery**

229 State Highway 26  
Hamilton 3286  
07 856 6890

**Pet Doctors Cat Hotel**

Cnr Tristram & Mill Streets  
Hamilton  
07 838 2200

**Pirongia Boarding Cattery**

284 Baffin Street  
Pirongia  
07 871 9308

**Purrfect Getaway Boarding Cattery**

1 Oliver Street  
Cambridge 3434  
07 823 1126

**Red Brae Farm Doggy Daycare**

124 Paparamu Road  
Tirau 3484  
027 378 2757

**Stoney Peak Pet Lodge**

728 Quine Road  
Tahuna 3373  
07 887 5534

**Tamahere Boarding Kennels & Cattery**

257 Peake Rd  
RD 1 Cambridge 3493  
07 827 6842

**Taumarunui Boarding Kennels & Cattery**

Pongahuru Road  
Taumarunui  
07 895 6747

**Waitakaruru Boarding Kennels & Cattery**

721 State Highway 25  
Waitakaruru 3576  
07 867 3344

**Westend Cattery**

58A West Street  
Morrinsville 3372  
07 889 0999

## Agricultural and pastoral societies

### Cambridge Agricultural & Pastoral Association

Contact: Vanessa Semmens  
Address: PO Box 333 Cambridge 3450  
Email: [vanessa.cambridgeaandpshow@gmail.com](mailto:vanessa.cambridgeaandpshow@gmail.com)  
Cell: 027 822 5911  
Venue: Cambridge Raceway  
Taylor Street  
Cambridge

### Matamata Agricultural & Pastoral Association

Contact: Sue Hansen  
Address: PO Box 156 Matamata 3440  
Email: [matamataaandp@gmail.com](mailto:matamataaandp@gmail.com)  
Cell: 027 279 5033  
Venue: Station Road  
Matamata

### Morrinsville Agricultural & Pastoral Society

Contact: Sue Hansen  
Address: PO Box 284 Morrinsville 3340  
Email: [morrinsvilleshow@gmail.com](mailto:morrinsvilleshow@gmail.com)  
Phone: 027 294 3153  
Website: [morrinsvilleshow.co.nz](http://morrinsvilleshow.co.nz)  
Venue: 42 Cureton Street  
Morrinsville 3300

### Paeroa Agricultural & Pastoral Association

Contact: Doug Lineham  
Address: PO Box 85 Paeroa  
Email: [paeroaaandp@hotmail.com](mailto:paeroaaandp@hotmail.com)  
Phone: 07 862 8605  
Venue: Kerepehi Domain  
202 Kaikahu Rd  
Kerepehi, 3671

### Te Aroha Agricultural, Pastoral & Horticultural Association

Contact: Anne Browne  
Address: PO Box 34, Te Aroha 3320  
Email: [tearoahaaph@gmail.com](mailto:tearoahaaph@gmail.com)  
Phone: 07 884 4139  
Cell: 022 060 8865  
Venue: 72 Boyd Park  
Stanley Avenue  
Te Aroha

### Te Kauwhata Agricultural & Pastoral Association

Contact: Michelle Croucher  
Address: PO Box 91 Te Kauwhata 3781  
Email: [tekauwhatashow@gmail.com](mailto:tekauwhatashow@gmail.com)  
Venue: Te Kauwhata Domain  
31 Mahi Road  
Te Kauwhata

### Te Puke Agricultural & Pastoral Association

Contact: Kim Cawte  
Address: PO Box 267 Te Puke 3153  
Email: [kimcawte@gmail.com](mailto:kimcawte@gmail.com)  
Phone: 07 533 3129  
Cell: 021 133 0709  
Venue: 31 Showgrounds Road  
Paengaroa  
Te Puke

### Waihi Agricultural & Pastoral Association

Contact: Marilyn Parker  
Address: 5 Kimberley Road, Waihi 3610  
Email: [marilyn@ktd.co.nz](mailto:marilyn@ktd.co.nz)  
Phone: 07 863 8243  
Fax: 07 863 3186  
Venue: Cornwall Street & Parry Palm Avenue  
on State Highway 2

### Waikato Agricultural & Pastoral Association (Royal Event - Alpaca)

Contact: Cara Ferris - General Manager  
Address: PO Box 14161 Hamilton 3252  
Email: [gm@showingwaikato.co.nz](mailto:gm@showingwaikato.co.nz)  
Cell: 022 039 2245  
Website: [www.waikatoaandp.co.nz](http://www.waikatoaandp.co.nz)  
Venue: Claudelands Event Centre  
800 Heaphy Terrace,  
Hamilton

# Appendix 8

## Animal registration form

<b>Owned animal:</b>		<b>Date:</b>
<b>Found animal:</b>		

<b>Name of owner/finder:</b>	
<b>Usual residential address:</b>	
<b>Current residential address</b> (if different from above):	
<b>Contact phone number:</b>	
<b>Alternative phone number:</b>	
<b>Email:</b>	
<b>OWNER REGISTRATION NUMBER</b> (or other suitable ID):	

Animal information		
<b>Name:</b>		
<b>Species:</b>		
<b>Breed:</b>		
<b>ANIMAL REGISTRATION NUMBER</b> assigned at the shelter:		
<b>Age:</b>		<b>Sex:</b>
<b>Neutered (Y/N):</b>		<b>Colour:</b>
<b>Distinctive markings:</b>		
<b>Microchip (Y/N):</b>		<b>Microchip number:</b>
<p>Has the animal sustained any injuries? If so describe the location of the injury. If you believe your animal requires urgent medical attention, alert staff immediately.</p>		

<b>Usual Veterinarian:</b>	
<b>Phone:</b>	
<b>Practice name and address:</b>	
<p><b>NB:</b> In the event that access to your animal's previous medical records is required, the temporary animal facility's supervisor, or veterinarian, may contact your own veterinarian to provide those records.</p> <p>Does the animal have any pre-existing medical conditions or needs?</p>	
<b>Name/s of people the animal may be released to:</b>	
<b>Location animal found:</b>	<b>Time found:</b>
<b>Accompanying animal supplied:</b> (e.g. crate, cage, bedding, bowl, lead, collar)	

STAFF USE ONLY	
<b>Shelter address:</b>	
<b>Phone:</b>	
<b>Date animal released:</b>	<b>Time:</b>
<b>Animal released/ transferred to:</b>	<b>Phone:</b>
<b>Address:</b>	
<b>Photograph of animal:</b>	
<b>Veterinary examinations/ procedures carried out:</b>	
<b>Date:</b>	<b>Date:</b>
<b>Date:</b>	<b>Date:</b>
<b>Veterinarian in attendance:</b>	
<b>Practice name and address:</b>	
<b>Signature:</b>	<b>Date:</b>

# Appendix 9

## Animal welfare needs assessment questions

<b>Name:</b>	
<b>Address:</b>	
<b>Alternative address (if staying elsewhere):</b>	
<b>Contact phone number:</b>	

What kind of animal welfare assistance do you require? Select all that apply					
	Companion	Production	Disability assistance dog	Lifestyle block	Other (please specify)
<b>Access to animal:</b>					
<b>Animal rescue:</b>					
<b>Evacuation/transport:</b>					
<b>Food:</b>					
<b>Injured/sick animals:</b>					
<b>Lost animals:</b>					
<b>Services critical for production animals:</b>					
<b>Shelter or containment:</b>					
<b>Water:</b>					

Type of animals and numbers?

**Where are the animals that require assistance located? Include any additional details for access**

The following questions are for production animals:

**What is your relationship to the property?**

Owner	<input type="checkbox"/>	<b>Other (please specify below):</b>
Sharemilker/contract milker	<input type="checkbox"/>	
Manager (with decision - making capability)	<input type="checkbox"/>	
Staff member	<input type="checkbox"/>	

**What is your employer's contact details (where applicable)?**

**Do you have access to a functioning milk shed?**

Yes	<input type="checkbox"/>	<b>Notes:</b>
No	<input type="checkbox"/>	
Not applicable - animals dry	<input type="checkbox"/>	

**Is it safe for a stock truck to come on to the property?**

Yes	<input type="checkbox"/>	<b>Notes:</b>
No	<input type="checkbox"/>	

**Are your loading ramps in usable condition?**

<b>Yes</b>	<input type="checkbox"/>	<b>Notes:</b>
<b>No</b>	<input type="checkbox"/>	
<b>Not applicable - do not have loading ramps</b>	<input type="checkbox"/>	

**Provide any further details about the animal welfare assistance required.**

# Appendix 10

## Animal welfare impact report

<b>Report completed by:</b>					
<b>Name of event:</b>					
<b>CDEM event classification:</b>					
<b>Date of Assessment:</b>					
<b>Location of affected areas:</b>					
<b>Weather forecast:</b>					
<b>Status of utilities:</b>	Power	Telecomms	Roads	Water	Sewerage
	No damage	No damage	No damage	No damage	No damage
	Minor damage	Minor damage	Minor damage	Minor damage	Minor damage
	Major damage	Major damage	Major damage	Major damage	Major damage
<b>Likely impacts on animals:</b>					

Estimated animal populations in region	
Animal Type	Approximate number of animals
Dog	
Cats	
Birds	
Pocket pets	
Horses	
Dairy cattle	
Beef cattle	
Pigs	
Poultry	
Sheep	

**Constraints to response (e.g. roading issues, cordons, seasonal farming practices, structural damage)**

**Details:**

**Damage to veterinary infrastructure: Yes/No**

**Details:**

**Animal housing facilities affected e.g. boarding kennels, research facilities, aquariums: Yes/No**

**Details:**

**Known animal fatalities or injuries (include number and species):**

**Known loose stock or stray animals (include number and species):**

Priority actions	
Further assessment required	
Location [precise location or area]	Type of assessment required [for example, rapid impact, structural, animal welfare needs]
Immediate needs	
Location [precise location of asset or area of immediate need]	Type of need [e.g. water; food; veterinary support; evacuation support; rescue]

# Appendix 11

## Animal welfare in an emergency – information for community plans

Here is some suggested information about addressing animal welfare in emergencies that communities may consider including in their community plans. In some emergencies, communities may be isolated physically and communications may be down, so communities will have to manage animal welfare on their own until outside assistance can be accessed.

### Animal welfare coordinator

It is worthwhile identifying someone in the community who is experienced with animals and may be able to assist in coordinating an animal welfare response. It could be someone like a veterinarian, veterinary nurse/technician, farmer, SPCA officer, Animal Control officer, a member of the Rural Support Trust, a MPI staff member, a stock and station agent.

### Animal types in the area

It's a good idea to know what types of animals are in the area eg. pets, livestock (cattle, sheep, deer, pigs, poultry) and horses.

### Local veterinary clinics

Contact details and locations of local veterinary clinics can be added to a community plan.

### Food supplies

Consider including the names of suppliers of food for pets and livestock and horses in the local assets list. It could include supermarkets, veterinary clinics, convenience stores, butcher shops, stock and station outlets.

### Water

Access to drinkable water is vital for animal survival. During and after emergencies, access to stock water can become compromised due to damage to water pipes, landslides, and other farming infrastructure impacts. The water supply could also be contaminated. Agricultural suppliers and water transport companies should be included in the local resource list to allow for timely access to supplies to fix water pipes as well as possible transport of water if the water supply is unable to be fixed immediately.

## Evacuation and temporary animal shelters

Normally animal owners will want to evacuate with their pets, and it is best practice to do so. However, animal owners may not evacuate livestock and will prefer to manage them on property. This is due to the logistics of transporting large numbers of animals, having suitable areas where the animals could be held, the impact relocation can have on the health and welfare of animals and for biosecurity reasons. Farmers will generally want to keep their animals on their farms and take precautions such as moving stock to higher areas for example in a flood. However, in some instances farmers may want to move their stock off property.

People with pets and who live on livestock blocks are more likely to want to evacuate their animals especially if they evacuate themselves.

It is a good idea to identify facilities that could act as a temporary animal shelter. These could include showgrounds, saleyards, racecourses, slaughter premises yards, schools, community halls, and sports facilities such as tennis courts, sports ground facilities.

Some things to think about:

- Generally, people want to have their animals nearby and don't want to be separated from them.
- Finding sites that can accommodate both people and animals can be challenging.
- Evacuated people will have to look after own animals as there may be no outside assistance.
- Some people will fear, or not be accustomed to animals so there needs to be some ability to separate these people from animals.

### Lost pets

People may bring animals in, especially pets, they have found wandering. A record must be kept giving the best possible chance of reuniting the pet with the owner.

The record should include:

- Contact details of the person bringing the animal in.
- A basic description of the animals – species, colour, sex if it can be established, any distinguishing marks such as scars or tattoos.
- Where the animal was found.

## Disposal of carcasses

In severe events animals may die or need to be euthanised for humane reasons. Small numbers of companion animals may be disposed of via veterinary clinics or buried on the owner's property. Small numbers of livestock may be disposed of on farm. Carcass disposal must adhere to council regulations and bylaws.

## Contacts

It is recommended that the following contacts are also included in the plan:

- Local CDEM office
- Any slaughter premises
- Local SPCA
- Local MPI office
- Local stock carriers
- Local veterinary clinics
- Local kennels and catteries
- Agricultural contractor – machinery.

## Animal rescue

Animal rescue can be dangerous for animals and for rescuers. If animals need to be rescued, you should contact Fire and Emergency New Zealand or the local CDEM.

# References

Companion Animals NZ. (2020). *Companion Animals in New Zealand 2020*. Auckland.

Ministry of Civil Defence & Emergency Management. (2015). *Welfare Services in an Emergency: Director's Guideline for CDEM Groups and agencies with responsibilities for welfare services in an emergency [DGL 11/15]*. Wellington.

Retrieved November 15, 2021, from <https://www.civildefence.govt.nz/assets/Welfare-Services-in-an-Emergency/Welfare-Services-in-an-Emergency-Directors-Guideline.pdf>

National Animal Ethics Advisory Committee. (2021). *Good Practice Guide for the use of animals in research, testing and teaching*. Wellington: Ministry for Primary Industries. Retrieved from <https://www.mpi.govt.nz/dmsdocument/33585-Good-Practice-Guide-for-the-use-of-animals-in-research-testing-and-teaching>

New Zealand Government. (2019). *Coordinated Incident Management System (CIMS)* (Third ed.). Wellington, New Zealand: Officials' Committee for Domestic and External Security Coordination, Department of the Prime Minister and Cabinet.

Stats NZ. (2018). *2018 Census*. Retrieved November 15, 2021, from <https://www.stats.govt.nz/tools/2018-census-place-summaries/>

Stats NZ. (2020). *Regional Council 2020 Clipped (generalised)*. Retrieved November 15, 2021, from <https://datafinder.stats.govt.nz/layer/104253-regional-council-2020-clipped-generalised/data/>

Stats NZ. (2021). *Regional gross domestic product: Year ended March 2020*. Retrieved November 15, 2021, from <https://www.stats.govt.nz/information-releases/regional-gross-domestic-product-year-ended-march-2020>

Stats NZ. (n.d.). *Livestock Numbers by Regional Council*. Retrieved November 15, 2021, from <http://nzdotstat.stats.govt.nz/wbos/Index.aspx?DataSetCode=TABLECODE7423#>

Waikato CDEM Group. (2021). *Waikato Civil Defence Emergency Management Group plan 2018-2023*.

■ **In an emergency**

- call 111

■ **If your animals are effected in an emergency**

- Local Council: \_\_\_\_\_
- MPI: 0800 00 83 33

■ **Further information**

■ **For further information and details about animal welfare in emergencies visit**

- email [awem@mpi.govt.nz](mailto:awem@mpi.govt.nz)
- [www.mpi.govt.nz/getpetsthru](http://www.mpi.govt.nz/getpetsthru)
- Phone: 0800 00 83 33

■ **NZ Companion Animal Register**

- [www.animalregister.co.nz](http://www.animalregister.co.nz)

■ **Lost your pet? Go here:**

- [www.lostpet.co.nz](http://www.lostpet.co.nz)

May 2021

New Zealand Government

**Animals in  
Emergencies**

MY ANIMALS  
ARE  
HOME ALONE

If I am sick or injured in an emergency situation, please contact the person on this card

Ministry for Primary Industries  
Manatū Ahu Matua



■ **In case of an emergency please contact:**

NAME: \_\_\_\_\_

MOBILE: \_\_\_\_\_

■ **Animals at home**

ANIMAL NAME: \_\_\_\_\_

SPECIES/BREED/DESCRIPTION: \_\_\_\_\_

MICROCHIP/IDENTIFICATION: \_\_\_\_\_

ANIMAL NAME: \_\_\_\_\_

SPECIES/BREED/DESCRIPTION: \_\_\_\_\_

MICROCHIP/IDENTIFICATION: \_\_\_\_\_