



# Updating your template Food Control Plan (FCP) with the specific cards

---

## Why?

Due to changes in the law, food businesses using a template Food Control Plan need to update their Plan to make sure they're following the right rules. You must replace some specific cards by **30 June 2023**. You must replace your whole plan with the updated Plan by **20 February 2024**.

---

## How?

Update your Plan with the new pages only:

The Plan was designed so you can add and remove pages easily.  
You can do this by:

- downloading the new cards from: <https://www.mpi.govt.nz/food-business/running-a-food-business/food-control-plans/use-template-food-control-plan/steps-to-a-simply-safe-and-suitable-template-food-control-plan/>
- emailing your registration authority (e.g., MPI, council)

Or if you wish to replace your whole plan now and have the updated cards already included, then you can do this by following the 'Updating your full Simply Safe & Suitable'

---

## When?

You must get the updated cards by 30 June 2023.

For more information on the changes visit:

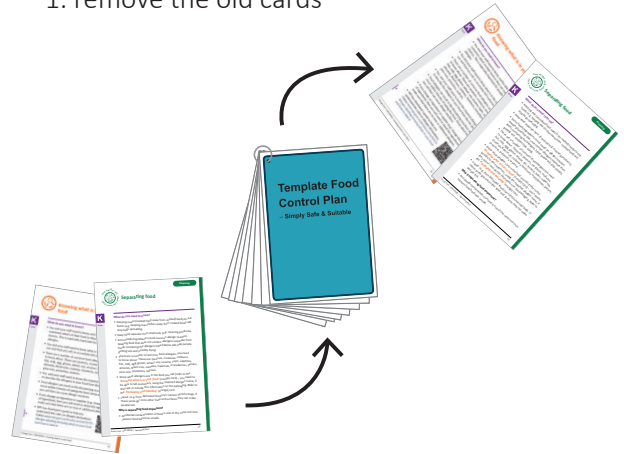
<https://www.mpi.govt.nz/consultations/proposed-changes-to-the-simply-safe-and-suitable-template-food-control-plan-and-relevant-food-notices/>

# Instructions for updating your FCP:

Every business must replace:



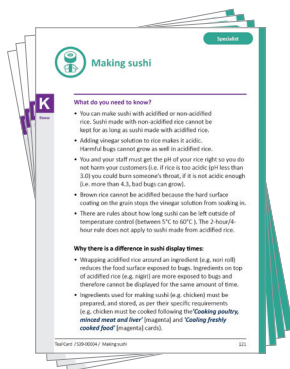
1. remove the old cards



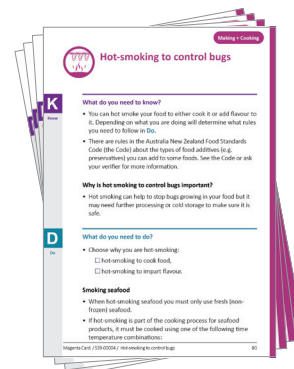
2. add the updated cards

You need to replace the  
**'Recalling your food'**  
**'Separating food cards'**  
**'Knowing what's in your food'**  
**'Packaging and labelling'**  
 cards with the new cards.

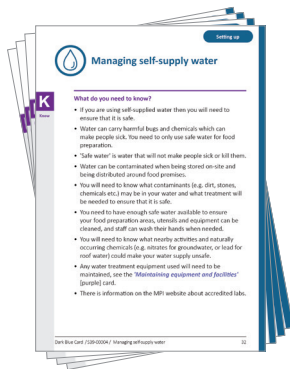
If your business does these activities you must add these cards:



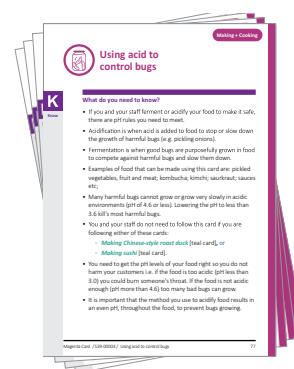
If you are **'Making sushi'** you will need to replace this card in your Plan.



If you are **'Hot smoking to control bugs'** you will need to replace this card in your Plan.



If you are **'Managing self-supply water'** you will need to replace this in your Plan.



If you are **'Using acid to control bugs'** you will need to replace this card in your Plan.

NOTE: if any of these cards do not apply to your business they can be discarded.