



RESIDENTS IN ZONE B

Please separate fruit and vegetable waste (e.g. leftovers, peel, apple cores, skins etc) from the rest of your household rubbish. General rubbish can go out with your normal rubbish collection.

Dispose of any fruit or vegetable waste in an in-sink waste disposal unit if you have one.

Or it can be disposed of in the MPI-provided wheelie bins which are in convenient locations on streets in **Zone B**.

We recommend you do not compost any fruit or vegetable waste in the meantime.

FRUIT, VEGETABLES AND PLANTS OF CONCERN

Some of the key fruits and vegetables that the Queensland fruit fly likes and can be found on are:

All citrus fruits, all stone fruit, pears, passionfruit, feijoa, grapes, guava, blackberry, boysenberry, cape gooseberry, custard apple, quince, persimmon, crab-apple, loquat, kumquat, pumpkin, olives, avocado, tomato, eggplant, and capsicum.



WHAT SHOULD I DO IF I THINK I'VE FOUND A FRUIT FLY?

MPI is setting traps to attract any fruit flies that may be present. These traps are internationally recognised as the best method to find fruit flies. Many different insects look like fruit flies and they're very difficult to identify by untrained people. So you don't need to go looking for them.

If, however, you find eggs or larvae (baby flies – these are small worm-like bugs) inside a piece of fruit, immediately tie it inside a plastic bag and call us on:

0800 80 99 66.

And help us by allowing our staff to place traps on your property if they need to.

Thanks for your support in this operation.

Find full information on the Queensland fruit fly and the controls on fruit movement in Auckland at:
www.mpi.govt.nz

CONTACTS

Ministry for Primary Industries
PO Box 2526, Wellington 6140
Pastoral House, 25 The Terrace
Wellington, New Zealand
www.mpi.govt.nz

February 2015

New Zealand Government

The Queensland fruit fly in Grey Lynn, Auckland

What you need to know



The Queensland fruit fly has been found in the Auckland suburb of Grey Lynn.

Fruit flies are of concern as they can damage New Zealand's fruit and vegetable crops. We need your help to prevent them spreading to fruit and veggie growing areas.

HELP KEEP QUEENSLAND FRUIT FLIES OUT OF OUR CROPS

To stop fruit fly spreading, we're asking people in the affected part of Auckland to help out by not moving fruit and veges too far from home.

We have set up what's called a Controlled Area around the fruit fly detection site. This circular area is divided into two zones – Zone A which is the higher risk area and goes out to approximately 200 metres from the find and Zone B which extends 1.5 km.

Full information on the Controlled Area, including an interactive map is on our website:

www.mpi.govt.nz.

It is important that any whole fresh fruit and vegetables (except for leafy vegetables and root vegetables) are not moved out of this Controlled Area.

There is no problem with taking any fruit or vegetables into the Controlled Area from outside.

THE DETAIL ABOUT THE FRUIT AND VEGE MOVEMENT RULES

There are some more detailed rules depending on if you live in **Zone A** or **Zone B**.

RESIDENTS IN ZONE A

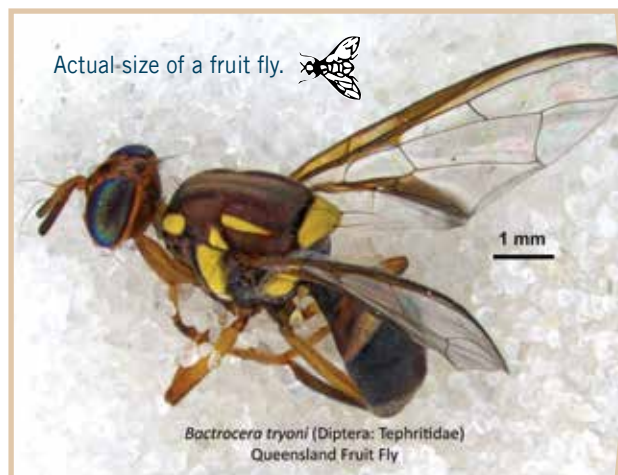
This is the highest risk zone as it is closest to where fruit fly has been found. There are slightly stricter requirements around the handling of fruit and vegetables.

If you live in this area, please don't move any whole fresh fruit or vegetable matter anywhere outside **Zone A**.

DISPOSAL OF RUBBISH

We ask that you separate out any fruit and vegetable waste (e.g. leftovers, peel, apple cores, skins etc) from the rest of your household rubbish. General rubbish can go out with your normal rubbish collection.

If you have an in-sink waste disposal unit, you can use this for getting rid of produce scraps. If you don't, please put produce waste in the special wheelie bin supplied by MPI. This will be safely disposed of.



You can also use the MPI bins for disposing of fruit and vegetable packing materials.

Do not compost any fruit or vegetable waste, including any garden waste and rubbish.

PRODUCE FROM YOUR OWN HOME GARDEN

MPI needs you to leave any home-grown fruit or vegetables that have fallen from trees or plants (windfall) on the ground in your garden. MPI inspectors will collect this material to check it for the presence of fruit fly.

Waste from home-grown fruit and veges that has been already chopped up and is free of any bugs can be disposed of in the MPI bin.

If you find eggs or larvae in home-grown produce, please tie all the fruit or vegetable inside a plastic bag and call MPI on **0800 80 99 66**.

IF YOU SEE SIGNS OF FRUIT FLY CALL 0800 80 99 66