



Fisheries New Zealand

Tini a Tangaroa

Revoked Fisheries (E-logbook Users Instructions and Codes) Circular 2023

October 2023

Title

Fisheries (E-logbook Users Instructions and Codes) Circular 2023.

Commencement

This circular comes into force on 11 October 2023.

Issuing Authority

This circular is issued under regulation 47 of the Fisheries (Reporting) Regulations 2017.

Dated at Wellington this 9th day of October 2023.

(signed)

Simon Lawrence
Director, Science & Information
Fisheries New Zealand
Acting under delegated authority

Introduction

This introduction is not part of the circular itself but provides the background and broad purpose of the circular.

The circular:

- (a) Provides the specific requirements for reporting under the Fisheries (Reporting) Regulations 2017. Those regulations set out the broad requirements for the reports and timeframes for when they must be recorded, completed and provided
- (b) Makes the following changes:
 - i. to Schedule 1 (Instructions for completing reports)
 - A. **Part 5** (Disposal reports) - amends the Guidance box to make it clear that alternative methods of disposal under section 191(1)(c) of the Act do not apply to disposal reports.
 - B. **Part 6** (Landing reports) - amends Table 2 in its Guidance box to set out when greenweights are recorded and by whom for the new QWM and WM landing codes
 - ii. to Schedule 2 (Codes):
 - A. Amends **Part 1A** of **Part 1** to refine the *Fishery management area or area reference numbers* and *Fishstock codes* for **Blackfoot paua**
 - B. Amends **Part 3A** of **Part 3** to add a new Principal product state code (MWF) for **'Minced whole fish'**
 - C. Amends **Part 6** (Landing codes) to introduce two new landing codes for commercial fishers to use under section 191(1)(c) of the Act when disposing of landed QMS and non-QMS fish and fish product to disposal facilities approved by the chief executive of the Ministry for Primary Industries

Contents	Page
1 Title	6
2 Commencement	6
3 Revocation	6
4 Purpose	6
5 Application	6
6 Definitions	6
7 Instructions in Schedule 1	8
8 Recording weights	8
9 Manual or system date/time attributes	9
10 Manual or system latitude and longitude attributes	9
11 Codes in Schedule 2	9
Schedule 1 – Instructions for completing reports	10
Part 1: Trip reports	10
Part 1A: Trip Start Report	10
Part 1B: Trip End Report	11
Part 2: Fish Catch Reports	12
Part 2A: Trawl	12
Part 2B: Netting	15
Part 2C: Lining	18
Part 2D: Potting	20
Part 2E: Diving	22
Part 2F: Seining	24
Part 2G: Hand-Gathering	26
Part 2H: Dredging	27
Part 2I: Other-Lining	29
Part 2J: Tuna-Lining (i.e., any surface longlining)	31
Part 2K: Squid jigging	33
Part 3: Non-fish or protected fish species (NFPS) catch reports	34
Part 4: Processing reports	37
Part 5: Disposal reports	40
Part 6: Landing reports	42
Schedule 2 – Codes	48
Part 1: Species and fishstock codes	48
Part 1A: Species and fishstock codes for fish managed under the QMS	48
Part 1B: Fishstock codes for use on monthly harvest return	63
Part 1C: Non-QMS species and fishstock codes for use on all reports.	64
Part 2: Codes for non-fish or protected fish species (NFPS)	65
Part 2A: Non-fish species	65
Part 2B: Protected fish species	68
Part 2C: Seabird capture codes	68

Part 3: Product state codes	69
Part 3A: Principal product state codes	69
Part 3B: Additional product state codes	70
Part 4: Container type codes	71
Part 5: Disposal codes	72
Part 6: Landing codes	73
Part 7: Fishing method codes	76
Part 8: Mitigation equipment / operational practice codes	78
Part 8A: Mitigation equipment / operational practice codes for >28m trawl vessels	78
Part 8B: Mitigation equipment / operational practice codes for <28m trawl vessels	79
Part 8C: Mitigation equipment / operational practice codes for vessels using bottom longline (BLL) and trot line (TL) methods	80
Part 8D: Mitigation equipment / operational practice codes for surface longline vessels	81
Part 9: Diving breath mode codes	82
Schedule 3 – Reference maps for certain fish catch reports	83
Part 1: Map showing grid for OYU5 (Bluff oyster) fishery	83
Part 2: Sub-statistical areas for freshwater eels	84
Part 3: Statistical areas for paua	86

1 Title

- (1) This circular is the Fisheries (E-logbook Users Instructions and Codes) Circular 2023.

2 Commencement

- (1) This circular comes into force on 11 October 2023.

3 Revocation

- (1) The Fisheries (E-logbook Users Instructions and Codes) Circular 2022, issued on 1 November 2022, is revoked.

4 Purpose

- (1) The purpose of this circular is—
- a) to provide detailed instructions for how to complete electronic event reports; and
 - b) to set out the codes that must be used when completing the reports required by the Fisheries (Reporting) Regulations 2017.

5 Application

- (1) This circular applies to all persons required to provide reports to the chief executive in accordance with the Fisheries (Reporting) Regulations 2017, unless an exemption or direction applies.

6 Definitions

- (1) In this circular—

Act means the Fisheries Act 1996.

alternative method of disposal means an alternative method of disposal approved by the chief executive of the Ministry for Primary Industries for use by fishers under section 191(1)(c) of the Act.

autolining means a form of bottom longline fishing where hooks are machine cleaned and orientated prior to storage on racks (magazines) and hooks are baited by a dedicated machine as part of the setting process.

container type code means a code used to refer to a specific type of container, as set out in Part 4 of Schedule 2 of this circular.

conversion factor means a conversion factor in a notice or certificate given by the chief executive under section 188(1) or (2) of the Act.

declared protected fish species refers to all protected fish species listed in Part 2B of Schedule 2 of this circular.

disposal code means a destination type code used to refer to a particular kind of disposal, as set out in Part 5 of Schedule 2 of this circular.

disposal facility means a lawfully operating disposal facility within the meaning of disposal facility set out in section 7 of the Waste Minimisation Act 2008

e-logbook means an electronic system used by a permit holder to create event reports and transmit them to the chief executive.

fishing activity means activity that would require a fish catch report under the Fisheries (Reporting) Regulations 2017 to be completed and includes setting activity for fishing methods where setting details are not required to be recorded.

Fishing method code means a code used to refer to a specific fishing method, as set out in Part 7 of Schedule 2 of this circular.

fishstock code means a code listed in column 5 of Part 1A of Schedule 2 of this circular and is a species code combined with a fisheries area number.

landing code means a destination type code used to refer to a particular way in which fish are landed, as set out in Part 6 of Schedule 2.

LFR means a licensed fish receiver, as defined in the Regulations.

meatweight means the weight of scallops remaining when the shell, skirt, and gut has been removed and discarded.

MPI means the Ministry for Primary Industries.

mitigation device means a device used in conjunction with fishing gear (whether on the vessel itself or, for instance, on a net) that is intended to reduce the chance of capturing protected species and includes both legally required mitigation devices and devices that are used voluntarily.

mitigation device code means the code referring to a particular kind of mitigation device, as set out in Part 8 of Schedule 2 of this circular.

NFPS means non-fish or protected fish species.

NFPS code means the code referring to a specific type of non-fish or protected fish species, as set out in Part 2 of Schedule 2 of this circular.

Predated fish means QMS fish that is taken by a permit holder and has been damaged by other organisms to such an extent that it is unfit for human consumption.

product state means the state of fish or fish product, having regard to the degree or amount of any processing of the fish since it was taken.

product state code means a code used to refer to a specific product state of fish or fish product, and can be either—

- a) a **principal product state code**, which is the code applied when the fish or fish product is in a single state, or, if it is in more than one state, the code applied to the state that has the greatest weight after processing; or
- b) an **additional product state code**, which is a code applied to any state other than a state with a principal product state code.

QMS fish means fish covered by the quota management system established by Part 4 of the Act; and **non-QMS fish** means fish not covered by the quota management system.

Regulations means the Fisheries (Reporting) Regulations 2017.

species code refers to any of the following:

- a) a code for a QMS fish, as listed in column 3 of Part 1A of Schedule 2 of this circular:
- a) a code for a non-QMS fish, as listed in Part 1C of Schedule 2 of this circular or in a table available on the Digital Monitoring page of the Fisheries New Zealand website:
- b) a code for a NFPS, as listed in Part 2 of Schedule 2 of this circular.

specified non-fish species refers to NFPS listed in Part 2A of Schedule 2 of this circular.

Trip ID means a number or other type of identification that identifies a particular fishing trip.

- (2) Any term that is defined in the Act or Regulations and used but not defined in this circular has the meaning set out in the Act or Regulations. (Key terms defined in the Act include **chief executive** and **greenweight**. Key terms defined in the Regulations include **destination type code**, **client number**, **fish**, **fishing trip**, **holding container**, **landing**, **trip**, and **permit holder**.)

7 Instructions in Schedule 1

- (1) Detailed instructions on how to complete event reports in an e-logbook are set out in Schedule 1.
- (2) The reports must be provided as follows:
 - a) trip start and trip end reports must be set out as provided in Part 1 of Schedule 1:
 - b) fish catch reports must be set out as provided in Part 2 of Schedule 1:
 - c) NFPS catch reports must be set out as provided in Part 3 of Schedule 1:
 - d) processing reports must be set out as provided in Part 4 of Schedule 1:
 - e) disposal reports must be set out as provided in Part 5 of Schedule 1:
 - f) landing reports must be set out as provided in Part 6 of Schedule 1.

8 Recording weights

- (1) Except as provided in subclauses (2) and (3), the weight of all fish, aquatic life and seaweed must be given in greenweight kilograms using, if appropriate to the product state of the fish, aquatic life, or seaweed,—
 - a) the conversion factor given in a notice or certificate given by the chief executive under section 188(1) or (2) of the Act; or
 - b) a spat ratio set by a notice made under section 188A of the Act.
- (2) Foveaux Strait dredge oysters must be recorded by number, as if 1 oyster weighed 1 kilogram.
- (3) The weight of scallops must be recorded as follows:
 - a) As greenweight in accordance with subclause (1) in fish catch reports;
 - b) As greenweight in accordance with subclause (1) in landing and disposal reports, if recorded against a landing or disposal code that is not required to be recorded on monthly harvest returns; or
 - c) As meatweight in landing and disposal reports, if recorded against a landing or disposal code that is required to be recorded on monthly harvest returns;
- (4) For the avoidance of doubt, the greenweight of fish recorded on landing reports under landing code PF refers to the actual weight of landed fish; you are not required to determine what the fish would have weighed prior to predation.

9 Manual or system date/time attributes

- (1) This clause applies where a date/time attribute in Schedule 1 has a field for both a manual and a system (i.e., electronic) record.
- (2) If the date/time recorded by the system is inaccurate by more than 1 minute, the manual record must be completed with the correct date and time.
- (3) All date/time attributes must be in 24-hour date and time values with the UTC offset, as in YYYY-MM-DDThh:mm:ssTZD, where TZD is the time zone designator (+hh:mm or -hh:mm).

10 Manual or system latitude and longitude attributes

- (1) This clause applies where a latitude or longitude attribute in Schedule 1 has a field for both a manual and a system (i.e., electronic) record.
- (2) If the latitude or longitude recorded by the system is incorrect by more than 0.001 degrees, the manual record must be completed with the correct latitude or longitude.
- (3) System latitude and longitude attributes must be given as decimal values with at least 4 decimal places. Manual latitude and longitude attributes must be given as decimal values with at least 3 decimal places.

11 Codes in Schedule 2

- (1) The codes that must be used in every report provided under the Regulations are as follows:
 - a) Part 1 – Species and fishstock codes
 - i) Part 1A - species and fishstock codes for QMS fish (for use in all reports except those for which a separate code for monthly harvest returns is given in Part 1B):
 - ii) Part 1B –fishstock codes to be used in monthly harvest returns for some specified species:
 - iii) Part 1C – species and fishstock codes for some non-QMS species (most non-QMS species and fishstock codes are located in a table available on the Digital Monitoring page of the Fisheries New Zealand website):
 - b) Part 2 – NFPS codes
 - i) Part 2A - NFPS codes for birds, mammals, reptiles, corals, sponges, and bryozoans, and SPRFMO VME organisms:
 - ii) Part 2B – Protected fish species codes:
 - iii) Part 2C – Seabird capture codes:
 - c) Part 3 – Product state codes
 - i) Part 3A – Principal product state codes:
 - ii) Part 3B – Additional product state codes:
 - d) Part 4 - Container type codes:
 - e) Part 5 - Disposal codes:
 - f) Part 6 - Landing codes:
 - g) Part 7 - Fishing method codes:
 - h) Part 8 - Mitigation device codes.
 - i) Part 9 – Diving breath mode codes.

Schedule 1 – Instructions for completing reports

Part 1: Trip reports

Part 1A: Trip Start Report

The definition of **fishing trip** in regulation 3 of the Regulations describes what is treated as the “start” of a fishing trip.

The Trip Start Report must be completed at the commencement of a trip.

Attribute Name	Instruction
Trip ID	<p>This Trip ID must be shown on every event report that relates to this trip. A Trip ID on a report will not be accepted unless a Trip Start Report has been provided to the chief executive.</p> <p>The Trip ID may be something generated automatically by the system, or be entered manually by you, in which case it must be unique for this vessel.</p> <p>If you intend to complete event reports under more than one client number during a trip, please complete a separate Trip Start Report for each client number but use the same Trip ID.</p>
Client number	Enter the client number of the permit holder.
Is vessel used?	Enter Yes or No
Vessel number	Enter the vessel's registration number as shown on its certificate of registration.
PSRMP?	<p>Enter Yes, if a Protected Species Risk Management Plan has been developed for the fishing method you intend to use most during the trip.</p> <p>Enter No, if a Protected Species Risk Management Plan <u>has not</u> been developed for the fishing method you intend to use most during the trip.</p>
Name of Master/Fisher	For vessel-based trips enter the full name of the master, as defined in the Act. For non-vessel trips enter the name of the person who is primarily responsible for decisions relating to fishing operations on this trip.
Start details (date/time/position)	<p>The start details record—</p> <ul style="list-style-type: none"> – when the trip starts (see definition of fishing trip in the Regulations); and – where the vessel or fisher is at that time. <p>Information about the system/manual fields is in clauses 9 and 10.</p>
Amendment reason	You must complete this if you are amending a report (e.g., by updating, correcting, or adding to it).
Notes	Enter any additional notes here. There are no restrictions on what you can include.

Part 1B: Trip End Report

The definition of **fishing trip** in regulation 3 of the Regulations describes what is treated as the “end” of a fishing trip.

The Trip End Report must be completed at the conclusion of a trip.

Attribute Name	Instruction
Trip ID	This Trip ID must match the one given in the Trip Start Report.
Client number	Enter the client number of the permit holder.
Is vessel used?	Enter Yes or No
Vessel number	Enter the vessel’s registration number as shown on its certificate of registration.
Name of Master/Fisher	For vessel-based trips enter the full name of the master, as defined in the Act. For non-vessel trips enter the name of the person who is primarily responsible for decisions relating to fishing operations on this trip.
End details (date/time/position)	<p>The trip end details show either</p> <ul style="list-style-type: none">- when the vessel ties up at a place where landing takes place; or- when the fisher leaves the immediate vicinity of the body of water from which the fish was taken (if no vessel is used) <p>and</p> <ul style="list-style-type: none">- where the vessel or fisher is at that time <p>Information about the system/manual fields is in clauses 9 and 10.</p>
Amendment reason	You must complete this if you are amending a report (e.g., by updating, correcting, or adding to it).
Notes	Enter any additional notes here. There are no restrictions on what you can include.

Part 2: Fish Catch Reports

Part 2A: Trawl

Complete a separate fish catch report for each trawl tow.

Attribute Name	Instruction
Trip ID	This Trip ID must match the one given in the Trip Start Report.
Client number	Enter the client number of the permit holder.
Fishing under High Seas Permit?	Enter Yes or No .
Is vessel used?	Enter Yes or No .
Vessel number	Enter the vessel's registration number as shown on its certificate of registration.
Fishing method code	<p>Enter the code for the fishing method used on this fishing event. See Part 7 of Schedule 2.</p> <p>Codes BPT (bottom pair trawl) and MPT (midwater pair trawl) should be used only if 2 vessels are used to tow a single net.</p> <p>Note that "bottom trawl" and "midwater trawl" refer to the design of trawl nets and not whether the gear is fished on the bottom or not. For example, a trawl net designed as midwater trawl gear can be fished on the bottom. If you use midwater trawl gear on the bottom, select the MW (midwater trawl) fishing method code.</p> <p>The codes PRB (precision bottom trawl) and PRM (precision midwater trawl) refer to types of trawl gear developed under the Primary Growth Partnership Precision Seafood Harvesting Programme.</p>
Target species code	Enter the <i>species code</i> of the main species you are trying to catch during this tow. It may not be the species you actually catch most of. See Part 1 of Schedule 2.
Mitigation equipment / operational practice	<p>For vessels >28m in overall length, select the applicable codes from Part 8A of Schedule 2.</p> <p>For vessels ≤ 28m in overall length, select the applicable codes from Part 8B of Schedule 2.</p>
Number of nets	<p>This refers to the number of nets, and not to the number of codends.</p> <p>If using a twin-rig set-up, enter 2.</p> <p>If 3 trawl nets are used, enter 3.</p>
Vessel pair number	<p>Only required for fishing method codes BPT and MPT.</p> <p>Enter the vessel registration number of the second vessel.</p>
Wingspread (metres)	<p>Enter the distance between the wings of the net. This must be one of the following:</p> <ul style="list-style-type: none"> the design wingspread of the trawl net. If the net has been modified since it was manufactured, enter the wingspread that the net is currently designed to operate at: the distance as measured by spread sensors, if available. The number you enter must represent the wingspread during the entire tow.

Attribute Name	Instruction
	If you are using more than 1 net, you must enter the combined wingspread of all the nets.
Headline height (metres)	Enter the distance from the groundrope to the headline. This must be 1 of the following: <ul style="list-style-type: none"> the headline height that the trawl net is designed to operate at. If the net has been modified since it was manufactured, enter the headline height that the net is currently designed to operate at. If you operate your trawl net at a different headline height than its design, record the headline height at which you operate: the distance as measured by a net monitor, if available. The number you enter must represent the headline height during the entire tow.
Codend mesh size (millimetres)	Enter the minimum mesh size of the codend or codends of your trawl net. Enter "0" if fishing method code is PRB or PRM.
Groundrope depth (metres)	Enter the distance from the surface of the sea to the groundrope of the net when the net reaches the target depth.
Bottom depth (metres)	Enter, the depth of the water at the groundrope when the net reaches the target depth.
Speed (knots)	Enter the average speed of your vessel during the tow.
Is net lost?	Enter Yes if the trawl net or any key component of trawl gear is lost. Put any additional details in the Notes field. In this case, record the date, time and position in the <i>start location</i> and leave the <i>finish location</i> empty.
Start details (date/time/position)	The start details record when and where the vessel is immediately after the net first reaches its intended depth and position (for example, when the brakes are applied). Information about the system/manual fields is in clauses 9 and 10.
Finish details (date/time/position)	The finish details record when and where the vessel is immediately before the net leaves its intended depth and position (for example, when the brakes come off). Information about the system/manual fields is in clauses 9 and 10.
Total estimated catch (kg)	Enter the total weight of fish caught in the net from this tow (or the combined weight from all nets if more than 1 net is used in a single tow).
Catch records	See below.
Is NFPS catch present?	Enter Yes or No .
Amendment reason	You must complete this if you are amending a report (e.g., by updating, correcting, or adding to it).
Notes	Enter any additional notes here. There are no restrictions on what you can include.

Catch records

For vessels greater than 28m in overall length, record the species code and greenweight estimates for the top (by weight) 5 QMS species and top 3 non-QMS species caught during the tow. You may include more species,

but you must not record less than 5 QMS and 3 non-QMS species, unless fewer than that number of QMS and non-QMS species was caught.

For vessels less than or equal to 28m in overall length, record the species code and greenweight estimates for the top (by weight) 8 species caught (QMS or non-QMS). You may include more species, but you must not record less than 8 species, unless fewer than that number of species was caught.

The catch record applies only to catch that you are legally permitted to retain and possess.

Attribute Name	Instruction
Species code	Enter the relevant code from Parts 1A and 1C of Schedule 2.
Estimated greenweight (kg)	See clause 8.

Part 2B: Netting

If you are fishing using inshore driftnet methods, you must complete a separate fish catch report each time you set and retrieve a net.

If you are fishing using set netting or pair set netting methods, you must complete a separate fish catch report if—

- a net is set that is more than 1 nautical mile from any part of the first net (see below); or
- a different species is targeted; or
- you set multiple nets within 1 nautical mile with the intention of hauling the nets at different times (e.g., on different trips); or
- you under-run a net.

If you are fishing using ring netting method, you must complete a separate fish catch report if—

- you move more than 1 nautical mile from the first shot of that trip.

Attribute Name	Instruction
Client number	Enter the client number of the permit holder.
Is vessel used?	Enter Yes or No .
Vessel number	Enter the registered vessel number as shown on its certificate of registration.
Fishing method code	Enter the code for the fishing method used on this fishing event. See Part 7 of Schedule 2.
Target species code	Enter the species code of the main species you are trying to catch during this event. It may not be the species you actually catch most of. See Part 1 of Schedule 2.
Mitigation device codes	If mitigation devices are used, enter the code for each device used (see Part 8 of Schedule 2).
Number of nets	If the fishing method code is DN, enter 1. If the fishing method code is RN; enter the number of “shots” undertaken. If the fishing method code is SN or PSN, enter the number of nets used. If you use spacers between panels of nets, do not count each panel separately; nets should be counted separately only if they are not physically joined in any way.
Total length of nets (metres)	Enter the combined length of all nets used.
Min mesh size (mm)	Enter the mesh size of the nets you are using. If you are using nets with different mesh sizes (but you are targeting the same species), enter the smallest mesh size you are using (SN and PSN only).
Net height	Enter the height of the net in terms of the number of meshes. If you are using nets with different net heights (SN and PSN only), enter the largest net height used.
Is net lost?	Enter Yes if the net is lost. Put any additional details in the Notes field.
Start details (date/time/position)	The start details record when and where the vessel or fisher is immediately prior to setting commencing (the first part of the first net (e.g., float or anchor) entering the water). Information about the system/manual fields are in clauses 9 and 10.

Attribute Name	Instruction
End of set details (date/time/position)	<p>The End of set details record when and where the vessel or fisher is immediately after setting has been completed (the last part of the last net (e.g., float or anchor) has entered the water).</p> <p>End of set details do not need to be completed for ring netting.</p> <p>Information about the system/manual fields are in clauses 9 and 10.</p>
Start of haul details (date/time/position)	<p>The Start of haul details record when and where the vessel or fisher is immediately prior to hauling commencing (before the first part of the first net starts to come out of the water).</p> <p>Start of haul details does not need to be completed for ring netting and inshore drift netting.</p> <p>Information about the system/manual fields are in clauses 9 and 10.</p>
Trip ID	This Trip ID must match the one given in the Trip Start Report. It must reflect the trip on which the haul occurred.
Finish details (date/time/position)	<p>The Finish details record when and where the vessel or fisher is immediately after hauling is complete (the last part of the last net is on board or has been hauled).</p> <p>Information about the system/manual fields are in clauses 9 and 10.</p>
Catch records	See below.
Estimated greenweight of all other species (kg)	Enter your estimate of the total weight of the catch excluding the top 8 species. This will be zero if you catch fewer than 8 species.
Is NFPS catch present?	Enter Yes or No .
Amendment reason	You must complete this if you are amending a report (e.g., by updating, correcting, or adding to it).
Notes	Enter any additional notes here. There are no restrictions on what you can include.

Note:

For set netting, the 1 nautical mile reporting requirement relates to the first net set. Multiple other nets can be set under the same catch event, as long as they are in the 1NM area around any part of the first net set. If a net is set further than 1NM from any part of the first net, that net forms the commencement of a second cluster for which a separate catch event must be completed. Any other net set outside that cluster forms the commencement of a subsequent cluster.

For ring netting, the 1 nautical mile reporting requirement relates to the first shot undertaken. Multiple other shots can be undertaken within the same catch event, as long as they are in the 1NM area around the start point of that first shot. If a shot is undertaken further than 1NM from the start of the first shot, that shot forms the commencement of a second cluster for which a separate catch event must be completed. Any other shot undertaken outside that cluster forms the commencement of a subsequent cluster.

Catch records

The catch record applies only to catch that you are allowed to retain and possess. Record the species code and greenweight estimates for the top (by weight) 8 species (QMS and non-QMS) caught during this set. You may include more species, but you must not record less than 8 species, unless fewer than that number of species was caught.

Attribute Name	Instruction
Species code	Enter the relevant codes from Parts 1A and 1C of Schedule 2.
Estimated greenweight (kg)	See clause 8(1).

Part 2C: Lining

If you are fishing using the bottom longline or trot line method, you must complete a separate fish catch report each time you set and retrieve a line to which hooks are attached.

If your fishing operation involves setting multiple sections of backbone that are not physically connected, you must complete a separate fish catch report for each section of backbone that is deployed.

If you are fishing using the dahn line method, you must complete a separate fish catch report if you haul a line that is more than 1 nautical mile from the first line you haul.

Attribute Name	Instruction
Trip ID	This Trip ID must match the one given in the Trip Start Report.
Client number	Enter the client number of the permit holder.
Fishing under High Seas Permit?	Enter Yes or No .
Is vessel used?	Enter Yes or No .
Vessel number	Enter the vessel's registration number as shown on its certificate of registration.
Fishing method code	Enter the code for the fishing method used on this fishing event. See Part 7 of Schedule 2.
Autolining?	Enter Yes or No (applies to bottom longlining only).
Target species code	Enter the species code of the main species you are trying to catch during this event. It may not be the species you actually catch most of. See Part 1 of Schedule 2.
Mitigation equipment / operational practice	Where fishing method is BLL or TL, select the applicable codes from Part 8C of Schedule 2.
Integrated weight line used?	Enter Yes if you are using integrated weight line with a lead core of at least 50 g/m. Enter No if you are using externally weighted line (applies to bottom longlining (BLL) and trot lining (TL) only).
External weight (kg)	Unless integrated weight line is used, please record your line weighting regime (kg of weight added for a given number of hooks) that best reflects the set as a whole. For example, if you attach a 7 kg weight every 40 hooks during setting, enter '7' for 'External weight (kg)' and '40' for 'Number of hooks per external weight'. You do not need to record this information if you are using the DL (dahn line) method.
Number of hooks per external weight	
Hook space (metres)	Enter the average distance between each hook on the line. Not applicable for the dahn line method.
Number of hooks	For bottom longline and trot line methods, enter the total number of hooks attached to the line used. For the dahn line method, enter the average number of hooks on each line.
Bottom depth (metres)	For bottom longline and trot line methods, enter the water depth at the start of the set. For the dahn line method, enter the water depth where the first line is hauled.
Is line lost?	Record Yes if the net is lost. Put any additional details in the Notes field.

Attribute Name	Instruction
Number of lines hauled	Only applicable to dahn line method. Enter the number of lines hauled. If the same line is hauled more than once, count each time the line is hauled separately.
Start details (date/time/position)	For the bottom longline and trot line methods, the start details record when and where the vessel is immediately prior to setting commencing (e.g., before the first anchor enters the water). For the dahn line method, the start details record when and where the vessel is immediately prior to hauling the first line. Information about the system/manual fields are in clauses 9 and 10.
End of set details (date/time/position)	For the bottom longline and trot line methods, the end of set details record when and where the vessel is immediately after setting is complete (e.g., after the last anchor has entered the water). Information about the system/manual fields are in clauses 9 and 10. This information is not applicable and is not required for the dahn line method.
Start of haul details (date/time/position)	For the bottom longline and trot line methods, the start of haul details record when and where the vessel is immediately prior to hauling commencing (before the first part of the gear is taken back on board). Information about the system/manual fields are in clauses 9 and 10. This attribute is not applicable and is not required for the dahn line method.
Finish details (date/time/position)	For the bottom longline and trot line methods, the finish details record when and where the vessel is immediately after hauling is complete (after the last part of the gear has been taken back on board). For the dahn line method, the finish details record when and where the vessel is immediately after hauling the last line. Information about the system/manual fields are in clauses 9 and 10.
Catch records	See below
Estimated greenweight of all other species (kg)	Enter your estimate of the total weight of the catch excluding the top 8 species. This will be zero if you catch fewer than 8 species.
Is NFPS catch present?	Enter Yes or No .
Amendment reason	You must complete this if you are amending a report (e.g., by updating, correcting, or adding to it).
Notes	Enter any additional notes here. There are no restrictions on what you can include.

Catch records

The catch record applies only to catch that you are legally permitted to retain and possess. Record the species code and greenweight estimates for the top (by weight) 8 species (QMS and non-QMS) caught during this set. You may include more species, but you must not record less than 8 species, unless fewer than that number of species was caught.

Attribute Name	Instruction
Species code	Enter the relevant codes from Parts 1A and 1C of Schedule 2.
Estimated greenweight (kg)	See clause 8

Part 2D: Potting

If you are fishing using a potting method, you must complete a fish catch report.

When potting, you must complete separate fish catch reports depending on your target species and fishing method as outlined in the table below.

You are not required to complete a fish catch report that relates to pots or other units of fishing equipment that are not intended to catch fish. For example, if you retrieve unbaited rock lobster pots that have been stored in the water, you are not required to complete a fish catch report to record details of this activity.

Target species	Fishing method code	When to complete catch reports
Rock lobster	RLP	If you lift a rock lobster pot that is more than 10 nautical miles from the first rock lobster pot lifted.
Blue cod	CP	If you lift a blue cod pot that is more than 2 nautical miles from the first blue cod pot lifted.
Freshwater eels	FN, EFN, EP, FP	If you lift a net or other unit of fishing equipment that is in a different eel sub-statistical area (refer to Schedule 3, Part 2).
All others	All methods	<p>Individual pots: If you lift a pot or other unit of fishing equipment that is more than 1 nautical mile from the first pot or other unit of fishing equipment lifted.</p> <p>Strings of pots (longline system): you must complete a separate report for each line of pots you haul that is more than 1 nautical mile from another line of pots.</p> <p>Note: Individual potting for ling may be considered as a string of pots.</p>

Attribute Name	Instruction
Trip ID	This Trip ID must match the one given in the Trip Start Report.
Client number	Enter the client number of the permit holder.
Is vessel used?	Enter Yes or No .
Vessel number	Enter the vessel's registration number as shown on its certificate of registration.
Fishing method code	Enter the code for the fishing method used on this fishing event. See Part 7 of Schedule 2.
Target species code	Enter the species code of the main species you are trying to catch during this event. It may not be the species you actually catch most of. See Part 1 of Schedule 2.
Number of lifts	Enter the total number of pots or other units of fishing equipment lifted. Pots or other units of fishing equipment lifted more than once during a day must be counted separately.
Soak time hours	Enter your estimate of the average soak time of the pots or other units of fishing equipment lifted during the fishing event.
Fyke nets baited?	Enter Yes or No . Only complete for fishing methods codes FN or EFN.

Attribute Name	Instruction
Start details (date/time/position)	The start details record when and where the vessel or fisher is immediately prior to lifting the first pot or other unit of fishing equipment. Information about the system/manual fields are in clauses 9 and 10.
Finish details (date/time/position)	The finish details record when and where the vessel or fisher is immediately after lifting the last pot or other unit of fishing equipment. Information about the system/manual fields are in clauses 9 and 10.
Catch records	See below.
Is NFPS catch present?	Enter Yes or No .
Amendment reason	You must complete this if you are amending a report (e.g., by updating, correcting, or adding to it).
Notes	Enter any additional notes here. There are no restrictions on what you can include.

Catch records

The catch record applies only to catch that you are legally permitted to retain and possess. Record the species code and greenweight estimates for the top (by weight) 8 species (QMS and non-QMS) caught. You may include more species, but you must not record less than 8 species, unless fewer than that number of species was caught.

Attribute Name	Instruction
Species code	Enter the relevant codes from Parts 1A and 1C of Schedule 2.
Estimated greenweight (kg)	See clause 8.

Part 2E: Diving

If you are fishing using a diving method, you must complete a fish catch report.

When diving, you must complete a separate fish catch report each time you change target species.

Attribute Name	Instruction
Trip ID	This Trip ID must match the one given in the Trip Start Report.
Client number	Enter the client number of the permit holder.
Is vessel used?	Enter Yes or No .
Vessel number	Enter the vessel's registration number as shown on its certificate of registration.
Fishing method code	Enter "DV"
Target species code	Enter the species code of the main species you are trying to catch during this event. It may not be the species you actually catch most of. See Part 1 of Schedule 2.
Is NFPS catch present?	Enter Yes or No .
Diver Records	Enter a diver record for each diver who dived during the diving event and (if relevant) one or more diver catch records for each diver.
Amendment reason	You must complete this if you are amending a report (e.g., by updating, correcting, or adding to it).
Notes	Enter any additional notes here. There are no restrictions on what you can include.

Diver records

When diving, you must end your current diver record and start a new diver record if any of the attributes within the diver record change e.g., breath mode, target length (paua diving only) or whether or not you are using a boat person.

When you dive for paua, you must also complete a separate diver record for each paua statistical area that you dive in. This includes recording which paua statistical areas(s) you dived in, how much time you spent diving in that statistical area, swell/visibility in that statistical area, whether you used a boat person, and how much paua you caught in that statistical area.

Attribute Name	Instruction
Diver ID or Name	If the target species is paua, enter the individual diver ID number issued by the relevant industry organisation. For all other target species, enter the diver's name (first name and surname).
Breath Mode	Enter the method of breathing used during the dive event. See Part 9 of Schedule 2
Statistical area	Record the name of the paua statistical area (refer Part 3 of Schedule 3). Only required if you dived for paua (target species = PAU, PAI or PAA)

Attribute Name	Instruction
Target length (mm)	If you are target harvesting paua to a specific size <u>above</u> the agreed MHS (as per your PauaMAC AOP) e.g., to meet market demand or processor request, record the minimum length of paua you are targeting (mm). If your target species is not paua, or you are not target fishing for paua above the agreed MHS, you do not need to enter anything into this field.
Total diving time hours	For the total time the diver spent in the water, record the number of whole hours.
Total diving time minutes	For the total time the diver spent in the water, record the number of minutes in addition to the number of whole hours recorded above (e.g., if dive was 3 hours and 10 minutes, enter "10").
Swell (metres)	Enter your estimate of the swell height during the dive event.
Visibility (metres)	Enter your estimate of the average visibility during the dive event.
Was boat person used?	Enter Yes if there was a person (a "boat boy") helping you get the catch on board a vessel during the dive event.
Start details (date/time/position)	The start details record when and where the diver is immediately prior to starting a dive. Information about the system/manual fields are in clauses 9 and 10.
Finish details (date/time/position)	The finish details record when and where the diver is immediately after ending a dive. Information about the system/manual fields are in clauses 9 and 10.
Diver Catch Records	See below.

Diver catch records

The Diver catch record applies only to catch that you are legally permitted to retain and possess.

In diver catch records, catches of blackfoot paua must be recorded separately from catches of yellowfoot paua. Record the species code and greenweight estimates for the top (by weight) 8 species (QMS and non-QMS). You may include more species, but you must not record less than 8 species, unless fewer than that number of species was caught.

Attribute Name	Instruction
Species code	Enter the relevant codes from Parts 1A and 1C of Schedule 2.
Estimated greenweight (kg)	See clause 8

Part 2F: Seining

For beach seine/drag net, Danish seine, pair Danish seine, lampara, and purse seine methods, you must complete a separate fish catch report for each set (i.e., each time the net is deployed and retrieved).

For dip net and scoop net methods, you must complete a separate fish catch report if fishing takes place more than 1 nautical mile from where you started fishing.

Attribute Name	Instruction
Trip ID	This Trip ID must match the one given in the Trip Start Report.
Client number	Enter the client number of the permit holder.
Fishing under High Seas Permit?	Enter Yes or No .
Is vessel used?	Enter Yes or No .
Vessel number	Enter the vessel's registration number as shown on its certificate of registration.
Fishing method code	Enter the code for the fishing method used on this fishing event. See Part 7 of Schedule 2.
Target species code	Enter the species code of the main species you are trying to catch during this event. It may not be the species you actually catch most of. See Part 1 of Schedule 2.
Mitigation device codes	If mitigation devices are used, enter the code for each device used (see Part 8 of Schedule 2).
Total net length and warps (metres)	For beach seine/drag net, lampara, and purse seine methods, enter the combined length of the net and warps used in the set or shot. For Danish seine and pair Danish seine, enter the total length of the warps only. Do not complete this field if using dip net or scoop net methods.
Groundrope length (metres)	Only required for Danish seine and pair Danish seine methods. Enter the length of the groundrope of your net.
Is spotter used?	Enter Yes if a spotter aircraft was used in conjunction with fishing to search for fish. Only required for purse seine method.
Spotter call sign	If a spotter aircraft was used, enter the call sign.
Number of lifts	Only required for dip net and scoop net methods. Record the total number of times you lift a dip net or scoop net.
Start details (date/time/position)	For all methods except dip net and scoop net, the start details record when and where the vessel or fisher is immediately prior to the set or shot commencing. For the dip net and scoop net methods, the start details record when and where the vessel or fisher is immediately prior to the first net lift occurring. Information about the system/manual fields are in clauses 9 and 10.
Finish details (date/time/position)	For all methods except dip net and scoop net, the finish details record when and where the vessel or fisher is immediately after the set or shot has ended. In the case of purse seining, this means the point at which the net or skiff (if used) is back on board the vessel.

Attribute Name	Instruction
	For the dip net and scoop net methods, the finish details record when and where the vessel or fisher is immediately after the last net lift has occurred. Information about the system/manual fields are in clauses 9 and 10.
Total estimated catch (kg)	For all methods except dip net and scoop net, enter your estimate of the total weight of fish caught in the set or shot. For dip net and scoop net methods, enter the total weight of fish caught in the combined lifts.
Catch records	See below
Is NFPS catch present?	Enter Yes or No .
Amendment reason	You must complete this if you are amending a report (e.g., by updating, correcting, or adding to it).
Notes	Enter any additional notes here. There are no restrictions on what you can include.

Catch records

The catch record applies only to catch that you are legally permitted to retain and possess. Record the species code and greenweight estimates for the top (by weight) 8 species (QMS and non-QMS) caught during the set. You may include more species, but you must not record less than 8 species unless less than 8 species were caught.

Attribute Name	Instruction
Species code	Enter the relevant codes from Parts 1A and 1C of Schedule 2.
Estimated greenweight (kg)	See clause 8.

Part 2G: Hand-Gathering

If you are fishing using a hand-gathering method, you must complete a fish catch report.

When hand-gathering, you must complete a separate fish catch report if fishing takes place more than 1 nautical mile from where you started fishing.

Attribute Name	Instruction
Trip ID	This Trip ID must match the one given in the Trip Start Report.
Client number	Enter the client number of the permit holder.
Is vessel used?	Enter Yes or No .
Vessel number	Enter the vessel's registration number as shown on its certificate of registration.
Fishing method code	Enter the code for the fishing method used on this fishing event. See Part 7 of Schedule 2.
Target species code	Enter the species code of the main species you are trying to catch during this event. It may not be the species you actually catch most of. See Part 1 of Schedule 2.
Number of people	Enter the total number of persons (including the permit holder if appropriate) gathering on behalf of the permit holder.
Time spent hours	Enter the sum of time spent by the permit holder and persons gathering on behalf of the permit holder.
Start details (date/time/position)	The start details record when and where the vessel or fisher is immediately prior to hand-gathering commencing. Information about the system/manual fields are in clauses 9 and 10.
Finish details (date/time/position)	The finish details record when and where the vessel or fisher is immediately after hand-gathering ends. Information about the system/manual fields are in clauses 9 and 10.
Catch records	See below.
Is NFPS catch present?	Enter Yes or No .
Amendment reason	You must complete this if you are amending a report (e.g., by updating, correcting, or adding to it).
Notes	Enter any additional notes here. There are no restrictions on what you can include.

Catch records

The catch record applies only to catch that you are legally permitted to retain and possess. Record the species code and greenweight estimates for the top (by weight) 8 species (QMS and non-QMS). You may include more species, but you must not record less than 8 species unless less than 8 species were caught.

Attribute Name	Instruction
Species code	Enter the relevant codes from Parts 1A and 1C of Schedule 2.
Estimated greenweight (kg)	See clause 8.

Part 2H: Dredging

If you are fishing using a dredging method, you must complete a fish catch report.

When using dredge and mechanical harvesting methods, unless you are fishing in the OYU5 (Foveaux Strait) fishery, you must complete a separate fish catch report if fishing takes place more than 1 nautical mile from where fishing started.

If you are dredging in the OYU5 (Foveaux Strait) fishery, you must complete a separate fish catch report for each grid square that you fish in (refer to Schedule 3, Part 1). However, a separate fish catch report is not required for OYU5 if:

- a) During a tow, a vessel crosses a grid square boundary before returning to the grid square where the tow started; or
- b) a tow ends in different grid square but is part of a series of tows that takes place in no more than four contiguous grid squares i.e., up to four grid squares that all have a common border.

Attribute Name	Instruction
Trip ID	This Trip ID must match the one given in the Trip Start Report.
Client number	Enter the client number of the permit holder.
Is vessel used?	Enter Yes or No .
Vessel number	Enter the vessel's registration number as shown on its certificate of registration.
Fishing method code	Enter the code for the fishing method used on this fishing event. See Part 7 of Schedule 2.
Target species code	Enter the species code of the main species you are trying to catch during this event. It may not be the species you actually catch most of. See Part 1 of Schedule 2.
Mitigation device codes	If mitigation devices are used, enter the code for each device used (see Part 8 of Schedule 2).
Dredge width (metres)	Only required for the dredging method. This means, the length of the bar or bit of the dredge. If you are towing more than one dredge, enter the combined width of all the dredges used.
Number of tows completed	Only required for the dredging method. Enter the number of tows completed (i.e., the number of times a dredge or dredges were lifted onto the vessel).
Number of devices used	For the dredging method, this means the number of dredges that are towed. For the mechanical harvesting method, this means the number of mechanical harvesters used.
Start details (date/time/position)	For the dredging method, the start details record when and where the vessel is immediately prior to dredging starting (i.e., prior to a dredge entering the water). For the mechanical harvesting method, the start details record when and where the vessel or fisher is immediately prior to harvesting starting. Information about the system/manual fields are in clauses 9 and 10.
Finish details (date/time/position)	For the dredging method, the finish details record when and where the vessel is immediately after dredging has ended (e.g., the dredge is back on board the vessel).

Attribute Name	Instruction
	For the mechanical harvesting method, the finish details record when and where the vessel or fisher is immediately after harvesting ends. Information about the system/manual fields are in clauses 9 and 10.
Total estimated catch (kg)	Enter your estimate of the total weight of fish caught, but for Foveaux Strait oysters use the number of individual oysters taken, treating one oyster as equivalent to 1 kg.
Catch records	See below
Is NFPS catch present?	Enter Yes or No .
Amendment reason	You must complete this if you are amending a report (e.g., by updating, correcting, or adding to it).
Notes	Enter any additional notes here. There are no restrictions on what you can include.

Catch records

The catch record applies only to catch that you are legally permitted to retain and possess. Record the species code and greenweight estimates for the top (by weight) 8 species (QMS and non-QMS). You may include more species, but you must not record less than 8 species unless less than 8 species were caught.

Attribute Name	Instruction
Species code	Enter the relevant codes from Parts 1A and 1C of Schedule 2.
Estimated greenweight (kg)	See clause 8.

Part 2I: Other-Lining

If you are fishing using a pole and line, hand line or trolling method, you must complete a fish catch report.

For the pole and line, and hand line methods, you must complete a separate fish catch report, if fishing takes place more than two nautical miles from where you started fishing.

For the trolling method, you must complete at least one fish catch report for each day's fishing. If, during a day's fishing, all lines are removed from the water before being deployed later in the day, the fishing effort must be recorded as two separate fish catch reports.

Attribute Name	Instruction
Trip ID	This Trip ID must match the one given in the Trip Start Report.
Client number	Enter the client number of the permit holder.
Fishing under High Seas Permit?	Enter Yes or No .
Is vessel used?	Enter Yes or No .
Vessel number	Enter the vessel's registration number as shown on its certificate of registration.
Fishing method code	Enter the code for the fishing method used on this fishing event. See Part 7 of Schedule 2.
Target species code	Enter the species code of the main species you are trying to catch during this event. It may not be the species you actually catch most of. See Part 1 of Schedule 2.
Maximum number of lines used	Enter the maximum number of lines used at any one time.
Maximum number of hooks used	For pole and line, and hand line methods, enter the maximum number of hooks used at any one time. For trolling, enter the maximum number of lures used at any one time.
Start details (date/time/position)	The start details record when and where the vessel or fisher is immediately prior to the first lines or lures being deployed. Information about the system/manual fields are in clauses 9 and 10.
Finish details (date/time/position)	The finish details record when and where the vessel or fisher is immediately after the last line or lure has been removed from the water. Information about the system/manual fields are in clauses 9 and 10.
Catch records	See below
Is NFPS catch present?	Enter Yes or No .
Amendment reason	You must complete this if you are amending a report (e.g., by updating, correcting, or adding to it).
Notes	Enter any additional notes here. There are no restrictions on what you can include.

Catch records

The catch record applies only to catch that you are legally permitted to retain and possess. Record the species code and greenweight* estimates of the top (by weight) 8 species (QMS and non-QMS) caught. You may include more species, but you must not record less than 8 species unless fewer than that number of species was caught.

With the exception of trolling, you do not need to record the number of individual fish, as previously required in paper returns. If the fishing method is trolling, you must record greenweight and number of fish for the top 8 species.

Attribute Name	Instruction
Species code	Enter the relevant codes from Parts 1A and 1C of Schedule 2.
Estimated greenweight (kg)	See clause 8.
Number of fish	Enter the total number of fish of each species. Only required for the trolling method.

Part 2J: Tuna-Lining (i.e., any surface longlining)

You must complete a fish catch report each time you set a surface longline.

Attribute Name	Instruction
Trip ID	This Trip ID must match the one given in the Trip Start Report.
Client number	Enter the client number of the permit holder.
Fishing under High Seas Permit?	Enter Yes or No .
Is vessel used?	Enter Yes or No .
Vessel number	Enter the vessel's registration number as shown on its certificate of registration.
Fishing method code	Enter the code for the fishing method used on this fishing event. See Part 7 of Schedule 2.
Target species code	Enter the species code of the main species you are trying to catch during this event. It may not be the species you actually catch most of. See Part 1 of Schedule 2.
Mitigation equipment / operational practice	Select the applicable codes from Part 8D of Schedule 2.
Weight on snoods (g)	Please record your snood weighting regime (x grams of weight within x metres of the hook). This should reflect the weighting used on the majority of snoods. For example, if 50-gram weights are attached 40cm from the hook, enter '50' for 'Weight on snoods (g)' and '0.4' for 'Distance from hook (m)'. If hook-shielding devices are used on 100% of hooks, only record the amount of <u>additional</u> weight added to the snood. If no additional weight is added to the snood, enter '0' for both.
Distance from hook (m)	
Line length (nautical miles)	Enter the total length of line (backbone) used during the set. The length of line is the amount of line in nautical miles between the first float and the last float set. It is not the distance travelled during setting.
Number of hooks	Enter the total number of hooks attached to the line used.
Number of floats	Enter the total number of floats attached to the line used.
Number of lightsticks	Enter the total number of lightsticks attached to the line used. Enter "0" if none used. (A lightstick is any small light-producing device powered chemically or by a battery.)
Line shooter	Enter Yes or No . A line shooter is any mechanical device used to unwind the longline into the water at a constant speed.
Bait type percent - Fish	Enter your estimate of the percentage of hooks on the line that were baited with fish.
Bait type percent - Squid	Enter your estimate of the percentage of hooks on the line that were baited with squid.
Bait type percent - Other	Enter your estimate of the percentage of hooks on the line that were unbaited, or were baited with something other than fish, squid, or an artificial bait.
Bait type percent - Artificial	Enter your estimate of the percentage of hooks on the line that were baited with an artificial bait.
Is line lost?	Enter Yes if some or all of the line is lost and is unable to be hauled. Add further information (such as length of line lost) in Notes.

Attribute Name	Instruction
Start details (date/time/position)	The start details record when and where the vessel is immediately prior to setting commencing (i.e., before the first float enters the water). Information about the system/manual fields are in clauses 9 and 10.
End of set details (date/time/position)	The end of set details record when and where the vessel is immediately after setting is complete (i.e., after the last float has entered the water). Information about the system/manual fields are in clauses 9 and 10.
Start of haul details (date/time/position)	The start of haul details record when and where the vessel is immediately prior to hauling commencing (before the first float is taken back on board the vessel). Information about the system/manual fields are in clauses 9 and 10.
Finish details (date/time/position)	The finish details record when and where the vessel is immediately after hauling is complete (e.g., after the last float has been taken back on board the vessel). Information about the system/manual fields are in clauses 9 and 10.
Catch records	See below
Is NFPS catch present?	Enter Yes or No .
Amendment reason	You must complete this if you are amending a report (e.g., by updating, correcting, or adding to it).
Notes	Enter any additional notes here. There are no restrictions on what you can include.

Catch records

In this section, you should only record the details of all catch that is kept; details of fish that are discarded or released must be recorded on a Disposal report.

Attribute Name	Instruction
Species code	Enter the relevant codes from Parts 1A and 1C of Schedule 2.
Product state code	Enter the code that best describes the state of the fish after processing. Refer to Part 3 of Schedule 2.
Processed weight (kg)	Enter the weight after processing of each species and product state combination.
Number of fish	Enter the total number of fish of each species and product state combination

Part 2K: Squid jigging

When squid jigging, you must complete a separate fish catch report for each drift. A drift is the period between when the jigging machines start and stop but can be no longer than 24 hours.

Attribute Name	Instruction
Trip ID	This Trip ID must match the one given in the Trip Start Report.
Client number	Enter the client number of the permit holder.
Is vessel used?	Enter Yes or No .
Vessel number	Enter the vessel's registration number as shown on its certificate of registration.
Fishing method code	Enter the code for the fishing method used on this fishing event. See Part 7 of Schedule 2.
Target species code	Enter the species code of the main species you are trying to catch during this event. It may not be the species you actually catch most of. See Part 1 of Schedule 2.
Mitigation device codes	If mitigation devices are used, enter the code for each device used (see Part 8 of Schedule 2).
Deepest lure depth (metres)	Enter the greatest depth in the water of any lure (jig), as measured vertically from the sea surface during the drift.
Bottom depth (metres)	Enter the water depth below the vessel at the start of the drift.
Number single reels	Enter the maximum number of single reels used during the drift.
Number double reels	Enter the maximum number of double reels used during the drift.
Start details (date/time/position)	The start details record when and where the vessel is immediately prior to the jig machines starting to operate. Information about the system/manual fields are in clauses 9 and 10.
Finish details (date/time/position)	The finish details record when and where the vessel is immediately after the jig machines have stopped operating. Information about the system/manual fields are in clauses 9 and 10.
Catch records	See below
Is NFPS catch present?	Enter Yes or No .
Amendment reason	You must complete this if you are amending a report (e.g., by updating, correcting, or adding to it).
Notes	Enter any additional notes here. There are no restrictions on what you can include.

Catch records

The catch record applies only to catch that you are legally permitted to retain and possess. Record the species code and greenweight estimates of the top 8 species (QMS and non-QMS) caught. You may include more species, but you must not record less than 8 species unless less than 8 species were caught.

Attribute Name	Instruction
Species code	Enter the relevant codes from Parts 1A and 1C of Schedule 2.
Estimated greenweight (kg)	See clause 8.

Part 3: Non-fish or protected fish species (NFPS) catch reports

If NFPS are captured as a result of interaction with fishing gear, separate reports are required for each fishing event.

If NFPS are captured but not associated with a fishing event, a separate report is required by the close of the day of capture (for example: deck strikes).

For the purposes of NFPS reports:

catch means that the NFPS has become fixed, entangled, or trapped in such a way that it cannot move freely or free itself. It does not include, for instance, birds that strike the warp, unless they are actually caught, or birds that are snagged briefly but then free themselves.

deckstrike is where a bird collides with, or lands on a vessel or its superstructure, and is unable to leave the vessel of its own accord because it is injured or disoriented.

decomposing, in this context, refers to an animal that was already dead prior to being caught in fishing gear and brought on board a vessel. This life status category is intended to enable a distinction to be made between animals that were already dead prior to commencement of the fishing event where they were encountered and those that died as a result of interaction with fishing gear during that fishing event i.e., 'dead' life status category.

injured means—

- (a) for seabirds, one or more of the following:
 - i) broken or drooping wing (i.e., the seabird cannot fold the wing up):
 - ii) broken beak or leg:
 - iii) open wound:
 - iv) hook in bird (whether removed or not):
- (b) for a marine mammal or reptile, one or more of the following:
 - i) open wound:
 - ii) hook in the animal (whether removed or not):
 - iii) broken flipper, fin, or tail:
 - iv) broken shell (turtle):
- (c) for a protected fish, one or more of the following:
 - i) open wound:
 - ii) a hook in the animal (whether removed or not):
 - iii) removed from the water.

If you catch a seabird, marine mammal, reptile, or protected fish species, the NFPS report must give the *number* of animals caught and state which life status – uninjured, injured, or dead – each one was in when it was released or returned to sea.

If you catch corals, sponges, or bryozoans, you must record the *weight* of each species.

Attribute Name	Instruction
Trip ID	This Trip ID must match the one given in the Trip Start Report.
Client number	Enter the client number of the permit holder.
Is vessel used?	Enter Yes or No .
Vessel number	Enter the vessel's registration number as shown on its certificate of registration.
NFPS catch date/time	If the NFPS is caught during fishing activity, enter the date/time of when the fishing activity started. If the NFPS was not caught during fishing activity, enter the date/time of when you became aware of the capture. Information about the system/manual fields is in clause 8.
Fish catch event ID	Unless you're reporting a seabird deck strike, enter the event ID of the relevant fish catch report. If there is uncertainty regarding which fish catch event a capture resulted from, enter the most likely fish catch event ID.
NFPS catch location	Not required if Fish catch event ID is provided. The NFPS catch location records where the vessel or fisher is when the catch occurred. Information about the system/manual fields is in clause 9.
Amendment reason	You must complete this if you are amending a report (e.g., by updating, correcting, or adding to it).
NFPS catches	See below
Notes	Enter any additional notes here. There are no restrictions on what you can include.

NFPS Catches

Attribute Name	Instruction
Species code	Use the appropriate NFPS code in Part 2 of Schedule 2. Enter the exact species code if possible; otherwise, enter the "other" species code. For example, if you catch a seabird and you think it is a petrel but cannot identify the individual species, enter the code XXP, which is the code for unidentified petrels, prions and shearwaters. The SPRFMO VME organisms' codes in Part 2 of Schedule 2 should only be used when fishing under a High Seas Fishing Permit in the SPRFMO convention area.
Number uninjured	Applies to seabirds, marine mammals, reptiles, or protected fish species caught. Enter the number of each species released alive and uninjured (see definition above).
Number injured	Applies to seabirds, marine mammals, reptiles, or protected fish species caught. Enter the number of each species released alive but injured (see definition above).
Number dead	Applies to seabirds, marine mammals, reptiles, or protected fish species caught. Enter the number of each species returned to the sea dead.

Attribute Name	Instruction
Number decomposing	<p>Applies to seabirds, marine mammals, reptiles, or protected fish species caught. Enter the number of decomposing animals of each species (see definition above). Examples of what to record in this category include:</p> <ul style="list-style-type: none"> • A carcass that has a tag or marker placed by an observer, such as CSP tag • A carcass where the flesh is putrid and smells • Skeletal remains <p>Additional details can be provided in the 'Notes' field</p>
Estimated weight (kg)	<p>Applies to species of coral, sponge, or bryozoan. Enter the weight of each species caught. Weights of less than 1 kg may be recorded as fractions of a kilogram. Other weights may be rounded down to the nearest whole kg.</p>
Seabird capture code	<p>See Part 2C of Schedule 2.</p> <p>If the seabird was caught as a result of interaction with trawl fishing gear, use the appropriate code based on whether you think the bird was caught in the net or in the warps. Record "other" if you are unsure where the bird was caught or if it was not taken in the net or warps.</p> <p>If the seabird was caught as a result of interaction with surface longline, bottom longline or trot line fishing gear, use the appropriate code based on whether you think the bird was caught while setting or hauling. If unsure, enter the code for "other".</p> <p>If the seabird is caught as a result of a deck strike, use the appropriate code. Use the Notes field for any further information.</p> <p>A seabird capture code does not need to be provided for any fishing method other than trawl, surface longline, bottom longline, trot line, or a deck strike.</p>
Tag	<p>Enter any identifier (such as a band on a seabird's leg or a tag on a marine mammal) that you are able to safely obtain. Record the numbers of each identifier obtained.</p>

Part 4: Processing reports

If you process fish on board a vessel, you only need to complete a processing report if the vessel—

- a) is greater than 19.5 m in registered length and
- b) freezes product or produces fish meal on board the vessel during the fishing trip; and
- c) is a registered limiting processing fishing vessel under the Animal Products Act 1999; or
- d) operates under a registered risk management programme under the Animal Products Act 1999.

General records

Attribute Name	Instruction
Trip ID	This Trip ID must be identified in a Trip Start Report.
Client number	Enter the client number of the permit holder.
Is vessel used?	Enter Yes or No .
Vessel number	Enter the vessel's registration number as shown on its certificate of registration.
Processing date/time	Enter the end of the period that the processing report applies to.
Notes	Enter any additional notes you want to add. There are no restrictions on what you can add.
Amendment reason	You must complete this if you are amending a report (e.g., by updating, correcting, or adding to it).
Product records	You must include at least one product record.

Product records

Attribute Name	Instruction
Product state code	Enter the product state code (principal product state code or additional product state code) that best describes the state of the fish. Principal product state codes are in Part 3A of Schedule 2 and additional product state codes are in Part 3B of Schedule 2.
Container type code	Enter the type of container that best describes what the fish was in. Use a code from Part 4 of Schedule 2.
Container weight (kg)	Enter the average weight of fish in a container (i.e., excluding the weight of the container and any packaging and other non-fish components).
Container count	Enter the number of containers of a particular type, species, product state, and content weight. Do not include any containers that are in blast freezers.

Attribute Name	Instruction
Conversion factor	Enter the appropriate conversion factor for the species and product state. Conversion factors are issued in notices issued under section 188(1) of the Act, or certificates issued under section 188(2) of the Act. Conversion factors do not have to be provided if the product state has a principal product state code of LIV, MEA, or GRE, or is an additional product state.
Species record	See below

Species records

For each product record there must be at least one species record. If the product state code is MEA, LIV, or LIB there can be multiple species records, otherwise there must only be one species record per product record. See Table 1 below for additional instructions on fish sent to meal and on shark livers.

Attribute Name	Instruction
Species code	For QMS species, use the appropriate species code in Part 1A of Schedule 2. For non-QMS species, use the appropriate code (if possible) listed in Part 1C of Schedule 2 or in a table available on the Digital Monitoring page of the Fisheries New Zealand website.
Greenweight (kg)	Enter the greenweight calculated by multiplying processed weight by conversion factor.

Table 1. Specific requirements for MEA, LIV and LIB product states

Product state	Specific requirements for completing processing report
MEA – (whole fish to meal)	<p>The information on container type code, container weight and container count only needs to be entered once on a processing report for each container type / container weight combination.</p> <p>For example, if fish meal is packed in 30kg sacks, you only need to enter the following information once:</p> <ul style="list-style-type: none"> - container type = SAC - container weight (kg) = 30 - container count = total number of sacks of fish meal produced during the 24-hour period. <p>This includes all fish meal regardless of whether it was produced from whole fish or offal. For each species of fish meal during the 24-hour period (principal product state) you must also enter the species code and greenweight (kg).</p>
LIV – (livers, principal product state); and LIB - (livers, additional product state)	<p>Applies only to shark livers.</p> <p>If livers from multiple species of shark are packed in the same container, the information on container type code, container weight and container count only need to be entered once on a processing report for each container type / container weight combination.</p> <p>For example, if livers from several species of shark are packed in 20kg cartons, you only need to enter the following information once:</p> <ul style="list-style-type: none"> - container type = CAR

	<ul style="list-style-type: none"> - container weight (kg) = 20 - container count = total number of containers of livers produced during the 24-hour period. <p>This includes all livers regardless of whether they were produced as principal or additional product state.</p> <p>For each species of shark from which livers are packed (principal product state) you must also enter the species code and greenweight (kg).</p>
--	--

Part 5: Disposal reports

You must complete a disposal report that records all fish that are not reported in a landing report for that trip.

Guidance

You need to complete and provide a disposal report where fish caught are—

- eaten on board a vessel; or
- used as bait; or
- required by legislation to be returned to the water; or
- returned to the water for any other reason; or
- transferred to, or removed from, a holding container in the water.

If you are not sure which fish catch report the disposal report relates to, and cannot enter the *Fish Catch Event ID*, you should give an explanation in the Notes field (Notes field entry is not required for holding container transfer).

If you are the operator of a surface longline vessel, you are required to report details of all fish that are not retained.

You do not need to complete and provide a disposal report in respect of fish and fish product that has been landed and is being disposed of using an alternative method of disposal (see Table 2 in Part 6 of this Schedule and Part 6 of Schedule 2 in respect of disposing of fish to disposal facilities).

If you do not dispose of any fish, you do not need to complete a disposal report.

You do not need to record the disposal of just parts (e.g., guts, offal) of fish.

You must complete a disposal report in conjunction with the relevant fish catch report if any fish caught during a fishing event are disposed of, unless:

- You are the operator of a trawl vessel that must complete processing reports. If so, you must complete the disposal report in the same cycle as the processing report; or
- You are placing or removing fish in/from a holding container in the water. If so, you must complete a disposal report each time fish are placed into, or removed from, the container. If you have several holding containers in close proximity to each other, you can complete just one disposal report for all those containers.

Attribute Name	Instruction
Trip ID	This Trip ID must be identified in a Trip Start Report.
Client number	Enter the client number of the permit holder.
Is vessel used?	Enter Yes or No
Vessel number	Enter the vessel's registration number as shown on its certificate of registration.

Attribute Name	Instruction
Disposal date/time	<p>Record the date and time when all fish caught in that fishing event have been separated into those that are going to be disposed of and those that are going to be kept (i.e., catch sorting is completed), unless:</p> <ul style="list-style-type: none"> - You are required to complete processing reports. If it is a disposal by a trawler that is also required to complete processing reports, the date and time is the same as the processing date and time for the relevant 24-hour period. - You are placing fish in or retrieving fish from a holding container in the water. If so, this means the date and time immediately before fish are placed in, or immediately after fish are retrieved from, the holding container in the water.
Fish catch event ID	Record the event ID of the fish catch event in which these fish were caught (if known). This should be left blank if a vessel is required to complete processing reports and disposals are not recorded on a per event basis and if recording details of fish being placed into or removed from a holding container in the water.
Holding container details	Enter the location of any holding container used. (See above for more information about when and how to complete a disposal report that involves using a holding container.)
Amendment reason	You must complete this if you are amending a report (e.g., by updating, correcting, or adding to it).
Notes	Enter any additional notes you want to add. There are no restrictions on what you can add.
Stock disposal records	See below

Stock disposal records

Attribute Name	Instruction
Fishstock code	<p>Enter the relevant code from Parts 1A and 1C of Schedule 2 unless the following applies:</p> <ol style="list-style-type: none"> If disposing of fish taken under the authorisation of a special permit, please use the relevant 'E' stock code. If disposing of fish taken under the authority of a High Seas fishing permit, please use the relevant 'ET' stock code.
Disposal code	Enter the relevant code from Part 5 in Schedule 2
Estimated greenweight (kg)	Estimate the weight using the most practicable method available, with reference to clause 8
Number of fish	Required only for freshwater eels above maximum legal weight and for all fish taken by surface long lining that are not retained and recorded in a fish catch report.

Part 6: Landing reports

You must complete a landing report for all fish that are landed. Fish that are not landed must be reported in a disposal report.

You must complete the landing report no later than the time set out in Table 1.

Guidance:

You can enter data in a landing report and complete it earlier than required by the Regulations.

Table 1: When to complete landing reports

(1) When a fishing vessel is used

Scenario that triggers requirement to complete and provide landing report	Latest time by which landing report must be completed
When fish has been removed or discharged from a vessel. This can be all fish or just some fish, if the intention is for some fish to be retained on board the vessel.	Immediately after all fish have been removed or discharged (which includes when fish are transhipped to another vessel). Can be completed and provided before the process of removing or discharging fish from a vessel starts if the information is available.
When a vessel containing fish is removed from the water.	Immediately after the vessel has been removed. Can be completed and provided before the vessel is removed from the water if the information is available.
When a vessel containing fish has been granted approval under section 110 of the Act to leave New Zealand fisheries waters.	Immediately after the vessel leaves the New Zealand EEZ. Can be completed and provided earlier if the information is available.
At the close of a fishing year. This applies only if fish are held on board a vessel that, at the close of the fishing year, is operated by or on behalf of a person who, during that fishing year, has held 100 tonnes or more of annual catch entitlement under the Act.	Immediately after the close of the fishing year in question.
When a vessel containing fish ceases to be registered or is re-registered under the Act.	Immediately after the vessel containing fish ceases to be registered or is re-registered under the Act.

(2) Fishing undertaken without a vessel

Scenario that triggers the requirement to complete and provide landing report	Timeframe by which landing report must be completed
Fish in the permit holder's possession, including fish held by the permit holder in a holding container, is lost or has been disposed of (e.g., passed to an LFR).	Immediately after the fish is lost or has been disposed of. Can be completed and provided earlier if the information is available.
Fish has been removed from the immediate vicinity of the body of water from which it was taken.	Immediately after the fish has been removed from the immediate vicinity of the body of water from which it was taken.

(3) When removing live fish from a holding container on land

Scenario that triggers the requirement to complete and provide landing report	Timeframe by which landing report must be completed
When fish that has already been recorded on a landing report under landing code LF is removed from the holding container.	By the close of the day on which fish is removed from the holding container.

Guidance

Landing codes have different requirements for recording greenweight. These are set out in Table 2.

Table 2: When are greenweights recorded and who determines them?

Landing code	Will a landing report using this code need to be amended or involve a second landing report?	Who determines greenweight (and how)
B	No	Fisher estimate
EOY	Yes. Greenweight is optional until the actual greenweight has been provided by the LFR.	Actual – from LFR
F	No	Fisher estimate
LF	Yes. A second landing report must be completed to record fish subsequently taken out of the holding container on land.	Fisher estimate
HL	No	Fisher estimate
L	Yes. Greenweight is optional until the actual greenweight has been provided by the LFR.	Actual – from LFR
LFL	Yes. Greenweight is optional until the actual greenweight has been provided by the LFR.	Actual – from LFR
LR	Yes. Greenweight is optional until the actual greenweight has been provided by the LFR.	Actual – from LFR

O	No	Fisher (in consultation with Fisheries New Zealand observers and MPI compliance)
PF	Yes. Greenweight is optional until the actual greenweight has been provided by the LFR.	Actual – from LFR
QL	Yes. Greenweight is optional until the actual greenweight has been provided by the LFR.	Actual – from LFR
R	Yes. Fish must be recorded on separate landing report when removed or discharged from the vessel.	Fisher estimate
S	No	Actual – fish weighed under MPI supervision
TL	Yes. Greenweight is optional until the actual greenweight has been provided by the LFR.	Actual – from LFR
TT	Yes. The operator of the vessel that receives the fish must also record it on a landing report.	Fisher estimate
V	No	Information provided to fisher by observer
W	No	Actual – weighed by fisher
QWM	No	<p>Actual - where the greenweight of the fish <i>being stored</i> pending disposal to waste is:</p> <p>(a) obtained from the LFR (not for the purpose of receiving the fish but to assist the fisher for waste disposal purposes); or</p> <p>(b) weighed by the fisher</p> <p><i>or, if Actual is not obtained:</i></p> <p>Fisher estimate of the greenweight of the fish <i>being stored</i> pending disposal to waste</p>
WM	No	<p>Actual - where the greenweight of the fish <i>being disposed of</i> to waste is:</p> <p>(a) obtained from the LFR (not for the purpose of receiving the fish but to assist the fisher for waste disposal purposes); or</p> <p>(b) weighed by the fisher</p> <p><i>or, if Actual is not obtained:</i></p> <p>Fisher estimate of the greenweight of the fish <i>being disposed of</i> to waste</p>

Table 3 – Special requirements for landing reports with codes MEA, LIV, or LIB

Code	Instructions
MEA – (whole fish to meal)	<p>The information on container type code, container weight and container count only needs to be entered <u>once</u> on a landing report for each container type / container weight combination. For example, if fish meal is packed in 30kg sacks, you only need to enter the following information once:</p> <ul style="list-style-type: none"> - container type = SAC - container weight (kg) = 30 - container count = total number of sacks of fish meal. This includes all fish meal regardless of whether it was produced from whole fish or offal. <p>For each species of fish meal during the trip (principal product state) you must also enter the fishstock code and greenweight (kg).</p>
LIV – (livers, primary product state); and LIB (livers, additional product state)	<p>Applies only to shark livers</p> <p>If livers from multiple species of shark are packed in the same container on a vessel, the information on container type code, container weight and container count only needs to be entered <u>once</u> on a landing report for each container type / container weight combination. For example, if livers from several species of shark are packed in 20kg cartons, you only need to enter the following information once:</p> <ul style="list-style-type: none"> - container type = CAR - container weight (kg) = 20 - container count = total number of containers of livers. This includes all livers regardless of whether they were produced as a principal or additional product state. <p>For each species of shark from which livers are packed (principal product state) you must also enter the fishstock code and greenweight (kg).</p>

Landing report

Attribute	Instruction
Trip ID	This Trip ID must match the one given in the Trip Start Report. Trip ID is not required if the landing report only records fish that has previously been recorded on a separate landing report as live fish having been placed in a holding container on land.
Client number	Enter the client number of the permit holder.
Is vessel used?	<p>Enter Yes or No.</p> <p>If the landing report only records fish that has previously been recorded on a separate landing report as live fish having been placed into a holding container on land, please enter Yes, and record the details of the vessel that was used to take the fish, if applicable.</p>
Vessel number	Enter the vessel's registration number as shown on its certificate of registration.
Landing date/time	<p>See Table 1 above for information on the latest that a landing date can be.</p> <p>If you are completing a landing record for fish held on board at the end of a fishing year, enter the date of the end of the year.</p>

Attribute	Instruction
Amendment reason	You must complete this if you are amending a report (e.g., by updating, correcting, or adding to it).
Notes	Enter any additional notes you want to add. There are no restrictions on what you can add.
Landing records	See below

Landing records

A landing record must be provided for each distinct combination of landing code, LFR client (if applicable), holding receptacle (if applicable), and tranship vessel number (if applicable).

Attribute Name	Instruction
Landing code	Enter the code that best describes what has happened to the landed fish. Enter the relevant code from column 2 of Part 6 of Schedule 2.
LFR details received date	Only relevant if the landing code is L, EOY, PF, QL, TL, LFL or LR, (i.e., only when the fish is sold or conveyed to an LFR). Enter the date on which you receive the greenweight details from the LFR.
LFR client number	Only relevant if the landing code is L, EOY, PF, QL, TL, LFL or LR, (i.e., only when the fish is sold or conveyed to an LFR).
Holding container details	Only relevant if landing code is QL, LF, LFL or QWM. Enter the location by reference to its lat/long or its physical address.
Tranship vessel number	Only relevant if the landing code is TL or TT. Enter the registration number of any vessel that the fish was transferred to.
Fish oil landed (litres)	Enter how many litres of fish oil was landed.
Offal has been mealed	Enter Yes if meal was produced from offal.
Landing-product record	See below.

Landing-product records

Every landing-product record must have a product record for each distinct set of product state, fishstock (unless MEA or LIV), container type and container weight.

Attribute	Instruction
Product state	Enter the product state code (principal product state code or additional product state code) that best describes the state of the fish when landed. Product state codes are set out in Part 3 of Schedule 2. If the product state code is MEA, LIV, or LIB, see the instructions in Table 3 above.
Container type	Enter the type of container that best describes what the fish was in. Use a code from Part 4 of Schedule 2.

Attribute	Instruction
Container weight (kg)	Enter the weight of fish in a container (i.e., excluding the weight of the container and any packaging and other non-fish components).
Container count	Enter the number of containers. Containers that are not completely full should be recorded as a decimal. For example, if a landing-product record has 3 and a half containers, enter a container count of 3.5.
Purchase order number	Only relevant if the landing code is L, EOY, PF, QL, TL, LFL, or LR. Enter the number of the purchase order number (purchase invoice or equivalent document) used by an LFR. The invoice or other documents gives the greenweight of fish you supplied to the LFR.
Stock records	See below

Stock records

For each landing-product record there must be at least one stock record. If the product state code is MEA, LIV, or LIB there can be multiple stock records, but otherwise there must be only one record.

Attribute	Instruction
Fishstock code	Enter the relevant code from Parts 1A and 1C of Schedule 2 unless the following applies: iii) If landing fish taken under the authorisation of a special permit, please use the relevant 'E' stock code. iv) ii) If landing fish taken under the authority of a High Seas fishing permit, please use the relevant ET stock code.
Greenweight (kg)	See Table 2 above for information on this. Do not record greenweight for fish landed in an additional state.
Shark fins (kg)	Only relevant if the product state is SHF. Enter the actual weight of shark fins. Note that the Fisheries (Commercial Fishing Regulations) 2001 prohibit shark finning and restrict the landing of shark fins separate from the body of the shark to only those species approved by the chief executive.

Schedule 2 – Codes

Part 1: Species and fishstock codes

Part 1A: Species and fishstock codes for fish managed under the QMS

Species common name	Scientific name	Species code	Fishery management area or area reference number	Fishstock code
Alfonsino	<i>Beryx splendens</i> , <i>B. decadactylus</i>	BYX	1, 9 2 3, 4, 5, 6 7 8 10	BYX1 BYX2 BYX3 BYX7 BYX8 BYX10
Anchovy	<i>Engraulis australis</i>	ANC	1 2 3, 5, 6 4 7 8, 9 10	ANC1 ANC2 ANC3 ANC4 ANC7 ANC8 ANC10
Barracouta	<i>Thyrsites atun</i>	BAR	1, 2, 3 4 5, 6 7, 8, 9 10	BAR1 BAR4 BAR5 BAR7 BAR10
Bigeye tuna	<i>Thunnus obesus</i>	BIG	1, 2, 3, 4, 5, 6, 7, 8, 9, 10	BIG1
Bladder kelp	<i>Macrocystis pyrifera</i>	KBB	Stage of life history = attached 3 4	KBB3G KBB4G
Blue cod	<i>Parapercis colias</i>	BCO	1, 9 2 3 4 5, 6 7 8 10	BCO1 BCO2 BCO3 BCO4 BCO5 BCO7 BCO8 BCO10
Blue (English) mackerel	<i>Scomber australasicus</i>	EMA	1 2 3, 4, 5, 6 7, 8, 9 10	EMA1 EMA2 EMA3 EMA7 EMA10
Blue moki	<i>Latridopsis ciliaris</i>	MOK	1, 2, 7, 8, 9 3 4 5, 6 10	MOK1 MOK3 MOK4 MOK5 MOK10
Bluenose	<i>Hyperoglyphe antarctica</i>	BNS	1, 9 2 3, 4, 5, 6 7 8	BNS1 BNS2 BNS3 BNS7 BNS8

Species common name	Scientific name	Species code	Fishery management area or area reference number	Fishstock code
			10	BNS10
Blue shark	<i>Prionace glauca</i>	BWS	1, 2, 3, 4, 5, 6, 7, 8, 9, 10	BWS1
Blue warehou	<i>Seriotelella brama</i>	WAR	1, 9 2 3, 4, 5, 6 7 8 10	WAR1 WAR2 WAR3 WAR7 WAR8 WAR10
Butterfish, greenbone	<i>Odax pullus</i>	BUT	1, 8, 9 2 3 4 5 6 7 10	BUT1 BUT2 BUT3 BUT4 BUT5 BUT6 BUT7 BUT10
Cardinalfish	<i>Epigonus telescopus</i>	CDL	1 2 3 4 5 6 7 8 9 10	CDL1 CDL2 CDL3 CDL4 CDL5 CDL6 CDL7 CDL8 CDL9 CDL10
Cockle	<i>Austrovenus stutchburyi</i>	COC	1A 1B 1C 2 3 3B 4 5, 6 7A 7B 7C 8 9	COC1A COC1B COC1C COC2 COC3 COC3B COC4 COC5 COC7A COC7B COC7C COC8 COC9
Deepwater clam	<i>Panopea zelandica</i>	PZL	1 2 3 4 5, 6 7 8 9	PZL1 PZL2 PZL3 PZL4 PZL5 PZL7 PZL8 PZL9
Dredge oysters: —except Foveaux Strait dredge oysters	<i>Ostrea chilensis</i>	OYS	1 2A 3 4 5A 7	OYS1 OYS2A OYS3 OYS4 OYS5A OYS7

Species common name	Scientific name	Species code	Fishery management area or area reference number	Fishstock code
Foveaux Strait dredge oysters		OYU	7A 7B 7C 8A 9 5	OYS7A OYS7B OYS7C OYS8A OYS9 OYU5
Elephantfish	<i>Callorhinchus milii</i>	ELE	1, 9 2, 8 3, 4 5, 6 7 10	ELE1 ELE2 ELE3 ELE5 ELE7 ELE10
Flatfish: Black flounder	<i>Rhombosolea retiaria</i>	BFL	1, 9 2, 8 3, 4, 5, 6 7 10	BFL1 ¹ BFL2 BFL3 BFL7 BFL10
Brill	<i>Colistium guntheri</i>	BRI	1, 9 2, 8 3, 4, 5, 6 7 10	BRI1 BRI2 BRI3 BRI7 BRI10
Greenback flounder	<i>R. tapirina</i>	GFL	1, 9 2, 8 3, 4, 5, 6 7 10	GFL1 GFL2 GFL3 GFL7 GFL10
Lemon sole	<i>Pelotretis flavilatus</i>	LSO	1, 9 2, 8 3, 4, 5, 6 7 10	LSO1 LSO2 LSO3 LSO7 LSO10
NZ sole	<i>Peltorhamphus novaezeelandiae</i>	ESO	1, 9 2, 8 3, 4, 5, 6 7 10	ESO1 ESO2 ESO3 ESO7 ESO10
Sand flounder	<i>R. plebeia</i>	SFL	1, 9 2, 8 3, 4, 5, 6 7 10	SFL1 SFL2 SFL3 SFL7 SFL10

¹ The fishstock codes to be used on monthly harvest returns for all flatfish species differ from the fishstock codes for all other reports. Refer to Table 1B.

Species common name	Scientific name	Species code	Fishery management area or area reference number	Fishstock code
Turbot	<i>Colistium nudipinnis</i>	TUR	1, 9 2, 8 3, 4, 5, 6 7 10	TUR1 TUR2 TUR3 TUR7 TUR10
Yellowbelly flounder	<i>R. leporina</i>	YBF	1, 9 2, 8 3, 4, 5, 6 7 10	YBF1 YBF2 YBF3 YBF7 YBF10
Frostfish	<i>Lepidopus caudatus</i>	FRO	1 2 3 4 5 6 7 8 9 10	FRO1 FRO2 FRO3 FRO4 FRO5 FRO6 FRO7 FRO8 FRO9 FRO10
Garfish	<i>Hyporhamphus ihi</i>	GAR	1 2 3, 5, 6 4 7 8, 9 10	GAR1 GAR2 GAR3 GAR4 GAR7 GAR8 GAR10
Gemfish	<i>Rexea solandri</i>	SKI	1, 9 2 3, 4, 5, 6 7, 8 10	SKI1 SKI2 SKI3 SKI7 SKI10
Ghost shark - dark	<i>Hydrolagus novaezealandiae</i>	GSH	1 2 3 4 5 6 7 8 9 10	GSH1 GSH2 GSH3 GSH4 GSH5 GSH6 GSH7 GSH8 GSH9 GSH10
Ghost shark - pale	<i>Hydrolagus bemisi</i>	GSP	1, 2, 3, 4, 10 5, 6 7, 8, 9	GSP1 GSP5 GSP7
Giant spider crab	<i>Jacquiniotia edwardsii</i>	GSC	1, 2, 7, 8, 9 3, 4 5 6A 6B	GSC1 GSC3 GSC5 GSC6A GSC6B

Species common name	Scientific name	Species code	Fishery management area or area reference number	Fishstock code
Green-lipped mussel and green-lipped mussel spat (Fishstock codes incorporating MSP can only be used for those green-lipped mussel stocks for which a ratio has been set under section 188A of the Fisheries Act 1996.)	<i>Perna canaliculus</i>	MSG (green-lipped mussel) MSP (green-lipped mussel spat)	1 2 3, 4, 5, 6 7A 7B 8 9 10 1 2 3, 4, 5, 6 7A 7B 8 9 10	MSG1 ² MSG2 MSG3 MSG7A MSG7B MSG8 MSG9 MSG10 MSP1 MSP2 MSP3 MSP7A MSP7B MSP8 MSP9 MSP10
Grey mullet	<i>Mugil cephalus</i>	GMU	1, 9 2, 8 3, 4, 5, 6 7 10	GMU1 GMU2 GMU3 GMU7 GMU10
Red gurnard	<i>Chelidonichthys kumu</i>	GUR	1, 9 2 3, 4, 5, 6 7 8 10	GUR1 GUR2 GUR3 GUR7 GUR8 GUR10
Hake	<i>Merluccius australis</i>	HAK	1, 2, 3, 5, 6, 8, 9 4 7 10	HAK1 HAK4 HAK7 HAK10
Hapuku and bass: Bass	<i>Polyprion americanus</i>	BAS	1, 9 2 3 4 5, 6 7 8 10	BAS1 ³ BAS2 BAS3 BAS4 BAS5 BAS7 BAS8 BAS10
Hapuku	<i>P. oxygeneios</i>	HAP	1, 9 2 3 4 5, 6 7	HAP1 HAP2 HAP3 HAP4 HAP5 HAP7

² The fishstock codes to be used on monthly harvest returns for green-lipped mussel and green-lipped mussel spat stocks differ from the fishstock codes for all other reports. Refer to Table 1B.

³ The fishstock codes to be used on monthly harvest returns for hapuku and bass differ from the fishstock codes for all other reports. Refer to Table 1B.

Species common name	Scientific name	Species code	Fishery management area or area reference number	Fishstock code
			8 10	HAP8 HAP10
Hoki	<i>Macruronus novaezelandiae</i>	HOK	1, 2, 3, 4, 5, 6, 7, 8, 9 10	HOK1 HOK10
Horse mussel	<i>Atrina zelandica</i>	HOR	1 2 3 4 5 6 7 8 9 10	HOR1 HOR2 HOR3 HOR4 HOR5 HOR6 HOR7 HOR8 HOR9 HOR10
Jack mackerel	<i>Trachurus declivis</i> , <i>T. novaezelandiae</i> , <i>T. murphyi</i>	JMA	1, 2 3, 4, 5, 6 7, 8, 9 10	JMA1 JMA3 JMA7 JMA10
John dory	<i>Zeus faber</i>	JDO	1, 9 2, 8 3, 4, 5, 6 7 10	JDO1 JDO2 JDO3 JDO7 JDO10
Kahawai	<i>Arripis trutta</i> , <i>A. xylabion</i>	KAH	1 2 3, 5, 6, 7 4 8, 9 10	KAH1 KAH2 KAH3 KAH4 KAH8 KAH10
King crab	<i>Lithodes murrayi</i> and <i>Neolithodes brodiei</i>	KIC	1 2 3 4 5 6 7 8 9 10	KIC1 KIC2 KIC3 KIC4 KIC5 KIC6 KIC7 KIC8 KIC9 KIC10
Kingfish	<i>Seriola lalandi</i>	KIN	1 2 3, 5, 6 4 7 8, 9 10	KIN1 KIN2 KIN3 KIN4 KIN7 KIN8 KIN10
Knobbed whelk	<i>Austrofusus glans</i>	KWH	1 2 3 4 5 6 7A	KWH1 KWH2 KWH3 KWH4 KWH5 KWH6 KWH7A

Species common name	Scientific name	Species code	Fishery management area or area reference number	Fishstock code
			7B 8 9	KWH7B KWH8 KWH9
Leatherjacket	<i>Parika scaber</i>	LEA	1, 9 2, 7, 8 3, 5, 6 4 10	LEA1 LEA2 LEA3 LEA4 LEA10
Ling	<i>Genypterus blacodes</i>	LIN	1, 9 2 3 4 5 6 7, 8 10	LIN1 LIN2 LIN3 LIN4 LIN5 LIN6 LIN7 LIN10
Long-finned freshwater eel	<i>Anguilla dieffenbachii</i>	LFE	11 12 13 14 15 16 4 20 21 22 23	LFE11 LFE12 LFE13 LFE14 LFE15 LFE16 LFE17 LFE20 LFE21 LFE22 LFE23
Lookdown dory	<i>Cyttus traversi</i>	LDO	1, 2, 7, 8, 9 3, 4, 5, 6 10	LDO1 LDO3 LDO10
Mako shark	<i>Isurus oxyrinchus</i>	MAK	1, 2, 3, 4, 5, 6, 7, 8, 9, 10	MAK1
Moonfish	<i>Lampris guttatus</i>	MOO	1, 2, 3, 4, 5, 6, 7, 8, 9, 10	MOO1
Orange roughy	<i>Hoplostethus atlanticus</i>	ORH	1, 8, 9 2A 2B 3A 3B, 4, 5A, 6 7A 7B 10	ORH1 ORH2A ORH2B ORH3A ORH3B ORH7A ORH7B ORH10
Oreos: Black oreo	<i>Allocyttus niger</i>	BOE	1, 2A, 2B, 5A, 7A, 7B, 8, 9 3A, 3B 4 6 10	BOE1 ⁴ BOE3A BOE4 BOE6 BOE10
Smooth oreo	<i>Pseudocyttus maculatus</i>	SSO	1, 2A, 2B, 5A, 7A, 7B, 8, 9 3A, 3B	SSO1 SSO3A

The fishstock codes to be used on monthly harvest returns for all oreo species differs from the fishstock codes for all other reports. Refer to Table 1B.

Species common name	Scientific name	Species code	Fishery management area or area reference number	Fishstock code
Spiky oreo	<i>Neocyttus rhomboidalis</i>	SOR	4 6 10 1, 2A, 2B, 5A, 7A, 7B, 8, 9 3A, 3B 4 6 10	SSO4 SSO6 SSO10 SOR1 SOR3A SOR4 SOR6 SOR10
Warty oreo	<i>Allocyttus verrucosus</i>	WOE	1, 2A, 2B, 5A, 7A, 7B, 8, 9 3A, 3B 4 6 10	WOE1 WOE3A WOE4 WOE6 WOE10
Pacific bluefin tuna	<i>Thunnus orientalis</i>	TOR	1, 2, 3, 4, 5, 6, 7, 8, 9, 10	TOR1
Packhorse rock lobster	<i>Jasus verreauxi</i>	PHC	1, 2, 3, 4, 5, 6, 7, 8, 9, 10	PHC1
Paddle crab	<i>Ovalipes catharus</i>	PAD	1 2 3 4 5 6 7 8 9 10	PAD1 PAD2 PAD3 PAD4 PAD5 PAD6 PAD7 PAD8 PAD9 PAD10
Parore	<i>Girella tricuspidata</i>	PAR	1 2, 3, 4, 5, 6, 7, 8 9 10	PAR1 PAR2 PAR9 PAR10
Patagonian toothfish	<i>Dissostichus eleginoides</i>	PTO	1, 2, 3, 4, 5, 6, 7, 8, 9, 10	PTO1
Paua – includes: Blackfoot paua and Yellowfoot paua	<i>Haliotis iris</i> <i>H. australis</i>	PAU PAI PAA	1 2 3A 3B 4 5A 5B 5D 6 6A 7 10	PAU1 PAU2 PAU3A PAU3B PAU4 PAU5A PAU5B PAU5D PAU6 PAU6A PAU7 PAU10
Pilchard	<i>Sardinops sagax</i>	PIL	1 2 3, 5, 6 4 7 8, 9 10	PIL1 PIL2 PIL3 PIL4 PIL7 PIL8 PIL10

Species common name	Scientific name	Species code	Fishery management area or area reference number	Fishstock code
Pipi	<i>Paphies australis</i>	PPI	1A 1B 1C 2 3 4 5, 6 7 8 9	PPI1A PPI1B PPI1C PPI2 PPI3 PPI4 PPI5 PPI7 PPI8 PPI9
Porae	<i>Nemadactylus douglasii</i>	POR	1 2, 8, 9 3, 4, 5, 6, 7 10	POR1 POR2 POR3 POR10
Porbeagle shark	<i>Lamna nasus</i>	POS	1, 2, 3, 4, 5, 6, 7, 8, 9, 10	POS1
Prawn killer	<i>Ibacus alticrenatus</i>	PRK	1 2 3 4A 5 6A 6B 7 8 9 10	PRK1 PRK2 PRK3 PRK4A PRK5 PRK6A PRK6B PRK7 PRK8 PRK9 PRK10
Queen scallop	<i>Zygochlamys delicatula</i>	QSC	3, 5	QSC3
Ray's bream	<i>Brama brama</i>	RBM	1, 2, 3, 4, 5, 6, 7, 8, 9, 10	RBM1
Redbait	<i>Emmelichthys nitidus</i>	RBT	1, 2 3, 4, 5, 6 7, 8, 9 10	RBT1 RBT3 RBT7 RBT10
Red cod	<i>Pseudophycis bachus</i>	RCO	1, 9 2, 8 3, 4, 5, 6 7 10	RCO1 RCO2 RCO3 RCO7 RCO10
Red crab	<i>Chaceon bicolor</i>	CHC	1 2 3 4 5 6 7 8 9 10	CHC1 CHC2 CHC3 CHC4 CHC5 CHC6 CHC7 CHC8 CHC9 CHC10
Red snapper	<i>Centroberyx affinis</i>	RSN	1 2, 3, 4, 5, 6, 7, 8, 9 10	RSN1 RSN2 RSN10

Species common name	Scientific name	Species code	Fishery management area or area reference number	Fishstock code
Ribaldo	<i>Mora moro</i>	RIB	1 2 3 4 5 6 7 8 9 10	RIB1 RIB2 RIB3 RIB4 RIB5 RIB6 RIB7 RIB8 RIB9 RIB10
Rig	<i>Mustelus lenticulatus</i>	SPO	1, 9 2 3, 4, 5, 6 7 8	SPO1 SPO2 SPO3 SPO7 SPO8
Rock lobster – spiny (red)	<i>Jasus edwardsii</i>	CRA	1 2 3 4 5 6 7 8 9 10	CRA1 CRA2 CRA3 CRA4 CRA5 CRA6 CRA7 CRA8 CRA9 CRA10
Rough skate	<i>Dipturus nasutus</i>	RSK	1, 2 3, 4, 5, 6 7 8, 9 10	RSK1 RSK3 RSK7 RSK8 RSK10
Rubyfish	<i>Plagiogeneion rubiginosum</i>	RBV	1 2 3 4 5 6 7 8 9 10	RBV1 RBV2 RBV3 RBV4 RBV5 RBV6 RBV7 RBV8 RBV9 RBV10
Scallop	<i>Pecten novaezelandiae</i>	SCA	1 CS 1A 2A 3 4 5, 6 7 7A 7B 7C 8A 9A	SCA1 SCACS SCA1A SCA2A SCA3 SCA4 SCA5 SCA7 SCA7A SCA7B SCA7C SCA8A SCA9A

Species common name	Scientific name	Species code	Fishery management area or area reference number	Fishstock code
Scampi	<i>Metanephrops challengeri</i>	SCI	1 2 3 4A 5 6A 6B 7 8 9 10	SCI1 SCI2 SCI3 SCI4A SCI5 SCI6A SCI6B SCI7 SCI8 SCI9 SCI10
School shark	<i>Galeorhinus galeus</i>	SCH	1, 9 2 3 4 5, 6 7 8 10	SCH1 SCH2 SCH3 SCH4 SCH5 SCH7 SCH8 SCH10
Sea cucumber	<i>Stichopus mollis</i>	SCC	1A 1B 2A 2B 3 4 5A 5B 6 7A 7B 7D 8 9 10	SCC1A SCC1B SCC2A SCC2B SCC3 SCC4 SCC5A SCC5B SCC6 SCC7A SCC7B SCC7D SCC8 SCC9 SCC10
Sea perch	<i>Helicolenus</i> spp	SPE	1 2 3 4 5 6 7 8 9 10	SPE1 SPE2 SPE3 SPE4 SPE5 SPE6 SPE7 SPE8 SPE9 SPE10

Species common name	Scientific name	Species code	Fishery management area or area reference number	Fishstock code
Sea urchin, kina, sea egg	<i>Evechinus chloroticus</i>	SUR	1A 1B 2A 2B 3 4 5 7A 7B 8 9 10	SUR1A SUR1B SUR2A SUR2B SUR3 SUR4 SUR5 SUR7A SUR7B SUR8 SUR9 SUR10
Short-finned freshwater eel	<i>Anguilla australis</i> , <i>A. reinhardtii</i>	SFE	11 12 13 14 15 16 4 20 21 22 23	SFE11 SFE12 SFE13 SFE14 SFE15 SFE16 SFE17 SFE20 SFE21 SFE22 SFE23
Silver warehou	<i>Seriolella punctata</i>	SWA	1, 2, 7, 8, 9 3 4, 5, 6 10	SWA1 SWA3 SWA4 SWA10
Smooth skate	<i>Dipturus innominatus</i>	SSK	1, 2 3, 4, 5, 6 7 8, 9 10	SSK1 SSK3 SSK7 SSK8 SSK10
Snapper	<i>Pagrus auratus</i>	SNA	1 2 3, 4, 5, 6, 7 8, 9 10	SNA1 SNA2 SNA3 SNA7 SNA8 SNA10
Southern bluefin tuna	<i>Thunnus maccoyii</i>	STN	1, 2, 3, 4, 5, 6, 7, 8, 9, 10, the high seas, and any other waters outside New Zealand fisheries waters	STN1
Southern blue whiting	<i>Micromesistius australis</i>	SBW	1, 2, 3, 4, 5, 7, 8, 9, 10 6A 6B 6I 6R	SBW1 SBW6A SBW6B SBW6I SBW6R

Species common name	Scientific name	Species code	Fishery management area or area reference number	Fishstock code
Spiny dogfish	<i>Squalus acanthias</i>	SPD	1, 2 3 4 5, 6 7 8, 9 10	SPD1 SPD3 SPD4 SPD5 SPD7 SPD8 SPD10
Sprat	<i>Sprattus antipodum</i> , <i>S. muelleri</i>	SPR	1, 2, 8, 9 3, 5, 6 4 7 10	SPR1 SPR3 SPR4 SPR7 SPR10
Squid	<i>Nototodarus gouldi</i> , <i>N. sloanii</i>	SQU	Method of fishing squid jigging 1J All fishing methods 1T 6T 10T	SQU1J SQU1T SQU6T SQU10T
Stargazer -giant	<i>Kathetostoma</i> spp	STA	1, 9 2 3 4 5, 6 7 8 10	STA1 STA2 STA3 STA4 STA5 STA7 STA8 STA10
Surf clam— deepwater tuatua	<i>Paphies donacina</i>	PDO	1 2 3 4 5 7 8 9	PDO1 PDO2 PDO3 PDO4 PDO5 PDO7 PDO8 PDO9
Surf clam—frilled venus shell	<i>Bassina yatei</i>	BYA	1 2 3 4 5 7 8 9	BYA1 BYA2 BYA3 BYA4 BYA5 BYA7 BYA8 BYA9
Surf clam—large trough shell	<i>Mactra murchisoni</i>	MMI	1 2 3 4 5 7 8 9	MMI1 MMI2 MMI3 MMI4 MMI5 MMI7 MMI8 MMI9

Species common name	Scientific name	Species code	Fishery management area or area reference number	Fishstock code
Surf clam—ringed dosinia	<i>Dosinia anus</i>	DAN	1 2 3 4 5 7 8 9	DAN1 DAN2 DAN3 DAN4 DAN5 DAN7 DAN8 DAN9
Surf clam—silky dosinia	<i>Dosinia subrosea</i>	DSU	1 2 3 4 5 7 8 9	DSU1 DSU2 DSU3 DSU4 DSU5 DSU7 DSU8 DSU9
Surf clam—triangle shell	<i>Spisula aequilatera</i>	SAE	1 2 3 4 5 7 8 9	SAE1 SAE2 SAE3 SAE4 SAE5 SAE7 SAE8 SAE9
Surf clam—trough shell	<i>Mactra discors</i>	MDI	1 2 3 4 5 7 8 9	MDI1 MDI2 MDI3 MDI4 MDI5 MDI7 MDI8 MDI9
Swordfish	<i>Xiphias gladius</i>	SWO	1, 2, 3, 4, 5, 6, 7, 8, 9, 10	SWO1
Tarakihi	<i>Nemadactylus macropterus</i> ; <i>Nemadactylus</i> sp. commonly referred to as “king tarakihi”	TAR	1, 9 2 3 4 5, 6 7 8 10	TAR1 TAR2 TAR3 TAR4 TAR5 TAR7 TAR8 TAR10
Trevally	<i>Pseudocaranx dentex</i>	TRE	1 2 3, 4, 5, 6 7, 8, 9 10	TRE1 TRE2 TRE3 TRE7 TRE10

Species common name	Scientific name	Species code	Fishery management area or area reference number	Fishstock code
Trumpeter	<i>Latris lineata</i>	TRU	1 2 3 4 5 6 7 8 9 10	TRU1 TRU2 TRU3 TRU4 TRU5 TRU6 TRU7 TRU8 TRU9 TRU10
Tuatua	<i>Paphies subtriangulata</i>	TUA	1A 1B 2 3 4 5, 6 7 8 9	TUA1A TUA1B TUA2 TUA3 TUA4 TUA5 TUA7 TUA8 TUA9
White warehou	<i>Seriolella caerulea</i>	WWA	1 2 3 4 5, 6 7 8 9 10	WWA1 WWA2 WWA3 WWA4 WWA5B WWA7 WWA8 WWA9 WWA10
Yellow-eyed mullet	<i>Aldrichetta forsteri</i>	YEM	1 2 3 4 5 6 7 8 9 10	YEM1 YEM2 YEM3 YEM4 YEM5 YEM6 YEM7 YEM8 YEM9 YEM10
Yellowfin tuna	<i>Thunnus albacares</i>	YFN	1, 2, 3, 4, 5, 6, 7, 8, 9, 10	YFN1

Unless specified in Part 1B, the fishstock code that must be used to complete a monthly harvest return is the same as the fishstock code set out in column 5 of Part 1A.

Part 1B: Fishstock codes for use on monthly harvest return

Fishstock codes for use on monthly harvest returns for certain species managed under the Quota Management System.

Species common name	Scientific name	Species code	Fishery management area or area reference number	Fishstock code to be used only on monthly harvest returns
Flatfish: Black flounder	<i>Rhombosolea retiaria</i>	BFL	1, 9 2, 8 3, 4, 5, 6 7	FLA1 FLA2 FLA3 FLA7
Brill	<i>Colistium guntheri</i>	BRI	10	FLA10
Greenback flounder	<i>R. tapirina</i>	GFL		
Lemon sole	<i>Pelotretis flavilatus</i>	LSO		
NZ sole	<i>Peltorhamphus novaezeelandiae</i>	ESO		
Sand flounder	<i>R. plebeia</i>	SFL		
Turbot	<i>Colistium nudipinnis</i>	TUR		
Yellowbelly flounder	<i>R. leporina</i>	YBF		
Green-lipped mussel and green-lipped mussel spat	<i>Perna canaliculus</i>	MSG (applies to green-lipped mussel) MSP (applies to green-lipped mussel spat)	1 2 3, 4, 5, 6 7A 7B 8 9 10	GLM1 GLM2 GLM3 GLM7A GLM7B GLM8 GLM9 GLM10
Hapuku and bass: Bass	<i>Polyprion americanus</i>	BAS	1, 9 2 3 4	HPB1 HPB2 HPB3 HPB4
Hapuku	<i>P. oxygeneios</i>	HAP	5, 6 7 8 10	HPB5 HPB7 HPB8 HPB10
Oreos: Black oreo	<i>Allocyttus niger</i>	BOE	1, 2A, 2B, 5A, 7A, 7B, 8, 9 3A, 3B	OEO1 OEO3A OEO4
Smooth oreo	<i>Pseudocyttus maculatus</i>	SSO	4 6 10	OEO6 OEO10
Spiky oreo	<i>Neocyttus rhomboidalis</i>	SOR		
Warty oreo	<i>Allocyttus verrucosus</i>	WOE		

Part 1C: Non-QMS species and fishstock codes for use on all reports.

Species common name	Scientific name	Species code	Fishery management area	Fishstock code to be used on all reports
Albacore	<i>Thunnus alalunga</i>	ALB	1, 2, 3, 4, 5, 6, 7, 8, 9, 10	ALB1
Bladder kelp	<i>Macrocystis pyrifera</i>	KBB	Stage of life history = free-floating 3 4 Stage of life history = beach cast 3 4	KBB3F KBB4F KBB3B KBB4B
Skipjack tuna	<i>Katsuwonus pelamis</i>	SKJ	1, 2, 3, 4, 5, 6, 7, 8, 9, 10	SKJ1
Slender tuna	<i>Allothunnus fallai</i>	STU	1, 2, 3, 4, 5, 6, 7, 8, 9, 10	STU1
All other species or classes of fish not already specified in this table – refer to the table below.			1, 2, 3, 4, 5, 6, 7, 8, 9, 10	Code formed by combining the species or class code with the relevant fishery management area number set out in the fourth column of this item.

Table of non-QMS species (from the Digital Monitoring page of the Fisheries New Zealand website):

- <https://www.mpi.govt.nz/dmsdocument/20576-non-qms-species->

Part 2: Codes for non-fish or protected fish species (NFPS)

Part 2A: Non-fish species

Birds

Common name	Scientific name	Code
Albatrosses	Diomedidae (Family)	
Albatrosses (unidentified)		XAL
<u>Great albatrosses</u>		XGA
<i>Wandering albatrosses (generic)</i>	<i>Diomedea</i> spp.	XWA
Antipodean and Gibson's albatross	<i>D. antipodensis</i>	XAG
Snowy (Wandering) albatross	<i>D. exulans</i>	XAS
<i>Royal albatrosses (generic)</i>	<i>D. sanfordi</i> and <i>D. epomophora</i>	XRU
Northern royal albatross	<i>D. sanfordi</i>	XNR
Southern royal albatross	<i>D. epomophora</i>	XRA
<u>Smaller albatrosses</u>	<i>Thalassarche</i> spp.	XMA
Buller's and Pacific albatross	<i>T. bulleri</i>	XPB
<i>Black-browed albatross (generic)</i>	<i>T. impavida</i> and <i>T. melanophris</i>	XKM
Campbell albatross	<i>T. impavida</i>	XCM
Southern black-browed albatross	<i>T. melanophris</i>	XSM
<i>Shy albatrosses (generic)</i>		
Chatham Island albatross	<i>T. eremita</i>	XCI
Salvin's albatross	<i>T. salvini</i>	XSA
White-capped albatross	<i>T. steadi</i>	XWM
<i>Other species</i>		
Grey-headed albatross	<i>T. chrysostoma</i>	XGM
Light-mantled sooty albatross	<i>Phoebastria palpebrata</i>	XLM
Boobies and gannets	Sulidae (Family)	
Australasian gannet	<i>Morus serrator</i>	XGT
Other (unidentified gannet type)		XSU
Gulls and terns	Laridae (Family)	
<i>"Seagulls" (generic)</i>	<i>Larus</i> spp.	XSG
Black-backed gull	<i>Larus dominicanus</i>	XBG
Red-billed gull	<i>Larus scopulinus</i>	XRb
<i>Terns (generic)</i>	<i>Sterna</i> spp., <i>Gygis</i> spp., <i>Anous</i> spp., <i>Procelsterna</i> spp., <i>Chidonias</i> spp.	XTE
Unidentified gull or tern		XLA
Petrels, prions, and shearwaters	Hydrobatidae, Procellariidae, and Pelecanoididae (Families)	
Unidentified petrel, prion or shearwater		XXP
<u>Petrels (generic)</u>	Procellariidae (family)	XPE
<i>Fulmarine petrels</i>		
Antarctic fulmar	<i>Fulmarus glacialis</i>	XAF
Antarctic petrel	<i>Thalassoica antarctica</i>	XAP
Cape petrels	<i>Daption</i> spp.	XCP

<i>Giant petrels (generic)</i>	<i>Macronectes</i> spp.	XTP
Northern giant petrel	<i>M. halli</i>	XNP
Southern giant petrel	<i>M. giganteus</i>	XSP
<i>Prions (generic)</i>	<i>Pachyptila</i> spp.	XPB
Antarctic prion	<i>P. desolata</i>	XPR
Broad-billed prion	<i>P. vittata</i>	XPV
Fairy prion	<i>P. turtur</i>	XFP
<i>Mid-sized petrels and shearwaters</i>	<i>Pterodroma, Procellaria and Puffinus</i> spp.	XPM
<i>Pterodroma</i> petrels (generic)	<i>Pterodroma</i> spp.	XPT
White-headed petrel	<i>P. lessonii</i>	XWH
Great-winged (Grey-faced) petrel	<i>P. macroptera</i>	XGF
<i>Procellaria</i> petrels (generic)	<i>Procellaria</i> spp.	XPC
Black petrel	<i>P. parkinsoni</i>	XBP
Grey petrel	<i>P. cinerea</i>	XGP
White-chinned petrel	<i>P. aequinoctialis</i>	XWC
Westland petrel	<i>P. westlandica</i>	XWP
<i>Shearwaters (generic)</i>	<i>Puffinus</i> spp.	XSW
Buller's shearwater	<i>P. bulleri</i>	XBS
Fluttering shearwater	<i>P. gavia</i>	XFL
Flesh-footed shearwater	<i>P. carneipes</i>	XFS
Sooty shearwater	<i>P. griseus</i>	XSH
Short-tailed shearwater	<i>P. tenuirostris</i>	XTS
<u>Storm petrels (generic)</u>	Hydrobatidae (family)	XST
Black-bellied storm petrel	<i>Fregetta tropica</i>	XFT
Grey-backed storm petrel	<i>Garrodia nereis</i>	XGB
White-bellied storm petrel	<i>F. grallaria</i>	XWB
White-faced storm petrel	<i>Pelagodroma marina</i>	XWF
<u>Diving petrels</u>	Pelecanoididae (family)	
Common diving petrel	<i>Pelecanoides urinatrix</i>	XDP
Penguins	Spheniscidae (Family)	
Little blue penguin	<i>Eudyptula minor</i>	XLB
Yellow-eyed penguin	<i>Megadytes antipodes</i>	XYP
Crested penguins	<i>Eudyptes</i> spp.	XCR
Penguin (unidentified)		XPG
Shags	Phalacrocoracidae (Family)	
Pied shag	<i>Phalacrocorax varius</i>	XPS
Spotted shag	<i>P. punctatus</i>	XPP
Shag (unidentified)		XHG

Mammals

Common name	Scientific name	Code
Dolphins and toothed whales	Odontoceti (Suborder)	
Bottlenose dolphin	<i>Tursiops truncatus</i>	BDO
Common dolphin	<i>Delphinus delphis</i>	CDD
Dusky dolphin	<i>Lagenorhynchus obscurus</i>	DDO
Hector's dolphin	<i>Cephalorhynchus hectori hectori</i>	HDO
Māui dolphin	<i>Cephalorhynchus hectori maui</i>	HDM
Orca	<i>Orcinus orca</i>	ORC
Pilot whale	<i>Globicephala melas</i>	PIW
Spectacled porpoise	<i>Phocoena dioptrica</i>	PHD
Other (unidentified dolphin)		WHT
Baleen whales	Mysticeti (Suborder)	
Fin whale	<i>Balaenoptera physalus</i>	FIW
Humpback whale	<i>Megaptera novaeangliae</i>	HBW
Minke whale	<i>Balaenoptera acutorostrata</i>	MIW
Sei whale	<i>Balaenoptera borealis</i>	SEW
Southern right whale	<i>Eubalaena australis</i>	SRW
Other baleen (unidentified whale)	Mysticeti (Suborder)	WHB
Seals and sea lions	Phocidae and Otariidae (Families)	
Elephant seal	<i>Mirounga leonine</i>	EPH
Leopard seal	<i>Hydrurga leptonyx</i>	LEO
New Zealand fur seal	<i>Arctocephalus forsteri</i>	FUR
New Zealand sea lion	<i>Phocarcos hookeri</i>	HSL
Other (unidentified)		SEA

Reptiles

Common name	Scientific name	Code
Marine turtles	Cheloniodea (Superfamily)	
Green turtle	<i>Chelonia mydas</i>	GNT
Hawksbill turtle	<i>Eretmochelys imbricate</i>	HBT
Leatherback turtle	<i>Dermochelys coriacea</i>	LBT
Loggerhead turtle	<i>Caretta caretta</i>	LHT
Other (Unidentified)		TLE
Sea snakes	Hydrophiidae (Family)	
Banded sea snake	<i>Laticauda colubrine</i>	BSS
Yellow-bellied sea snake	<i>Pelamis platurus</i>	YSS
Other (unidentified)		SSN

Corals, sponges, and bryozoans

Common name	Scientific name	Code
Corals, sponges, and bryozoans	Porifera (Phylum), Bryozoa (Phylum), Alcyonacea (Order), Gorgonacea (Order), Scleractinia (Order), Antipatharia (Order), Stylasteridae (Family)	CSB
Coral (unidentified)	Alcyonacea (Order), Gorgonacea (Order), Scleractinia (Order), Antipatharia (Order), Stylasteridae (Family)	COU
Sponges	Porifera (Phylum)	ONG
Bryozoan	Bryozoa (Phylum)	COZ

SPRFMO VME organisms (South Pacific Regional Fisheries Management Organisation Vulnerable Marine Ecosystem)

The species codes in this table should only be recorded if, on the corresponding fish catch report, the fisher has entered that they are fishing under a High Seas Fishing Permit.

Common name	Scientific name	Code
Stony corals	Scleractinia within the genera Solenosmilia; Goniocorella; Oculina; Enallopsammia; Madrepora; Lophelia	SIA
Soft corals (other than those designated as Gorgonian Alcyonacea)	Alcyonacea (Order)	SOC
Includes bamboo corals (Isididae), red / precious corals (Corallidae), bottle brush corals and sea fans (Primnoidae), bubblegum corals (Paragorgiidae), and golden corals (Chrysogorgiidae)	Gorgonian Alcyonacea; all taxa within the sub-orders Holaxonia; Calaxonia; Scleraxonia	GOC
Hydroids (other than those designated as Stylasteridae)	Anthoathecata (Order) and Leptothecata (Order)	HDR
Stylasterids (hydrocorals)	Stylasteridae (Family)	COR
Hexacorals	Zoantharia (Order)	ZAH
Anemones	Actiniara (Order)	ATR
Sea pens	Pennatulacea (Order)	PTU
Crinoids	Crinoidea (Class)	CRI
Armless stars	Brsingida (Order)	BRG
Giant, agglutinated foraminifera	Xenophyophorea (Superfamily)	GAF
Tube-building annelid worms	Serpulidae (Family)	SZS

Part 2B: Protected fish species

Common name	Scientific name	Species code
White pointer shark	<i>Carcharodon carcharias</i>	WPS
Spotted black grouper	<i>Epinephelus daemeli</i>	SBG
Black corals	Antipatharia (Order)	COB
Red hydrocorals	<i>Errina</i> spp.	ERR
Smalltooth sandtiger shark (deepwater nurse shark)	<i>Odontaspis ferox</i>	ODO
Whale shark	<i>Rhincodon typus</i>	WSH
Manta ray	<i>Manta birostris</i>	RMB
Spine-tailed devil ray	<i>Mobula japanica</i>	MJA
Giant grouper	<i>Epinephelus lanceolatus</i>	GGP
Basking shark	<i>Cetorhinus maximus</i>	BSK
Oceanic whitetip shark	<i>Carcharhinus longimanus</i>	OWS

Part 2C: Seabird capture codes

Fish catch event type	Description	Seabird capture code
Trawl	Warp	W
Trawl	Net	N
Trawl	Other	O
Lining / Tuna lining	Setting	S
Lining / Tuna Lining	Hauling	H
Lining / Tuna Lining	Other	O
N/A	Deck strike	L

Part 3: Product state codes

Part 3A: Principal product state codes

Principal product state (as defined in notices issued pursuant to section 188 of the Act)	Code
Green (or whole)	GRE
Gutted	GUT
Headed and gutted	HGU
Headed, gutted, and finned	HGF
De-fat fillets	DFT
Dressed	DRE
Fillets: skin-on	FIL
Fillets: skin-off	SKF
Fillets: skin-off untrimmed	USK
Fillets: skin-on untrimmed	UTF
Surimi	SUR
Fillets: skin-off trimmed	TSK
Fillets: skin-on trimmed	TRF
Dressed-straight cut (stargazer)	DSC
Dressed-V cut (stargazer)	DVC
Fish meal	MEA
Tailed (scampi)	SCT
Tailed (rock lobster)	RLT
Tentacles	TEN
Livers	LIV
Minced, skin-off fillets	MKF
Minced, headed and gutted	MGU
Minced whole fish	MWF
Headed, gutted, and tailed	HGT
Gilled and gutted tail on	GGO
Gilled and gutted tail off	GGT
Shucked and shelled	SHU
Shark fins attached	SFA
Wings (rays and skates)	WRS
Crab legs	LEG

Part 3B: Additional product state codes

Additional product state	Code
Roe - means the state in which the head, body, and all internal organs of a fish, except the gonads, have been removed	ROE
Heads - means the state in which the body and all internal organs of a fish, except the head, have been removed	HDS
Heads and tentacles - applies only to squid. Means, the state in which the mantle and all internal organs have been removed after the squid has been dressed	HET
Fish tails - means the part of a fish that remains after the head, body, and internal organs have been removed	FIT
Shark fins - in relation to any species of shark, means all primary fins associated with that shark	SHF
Minced by-product, hoki fillets - applies only to hoki. Means, the state in which offcuts and offal from any fillet state have been rendered by machine into a minced form	MBS
Minced by-product, headed and gutted - applies only to hoki. Means, the state in which offcuts and offal from the headed and gutted state have been rendered by machine into a minced form	MBH
Flaps - means the state in which the head, body, and all internal organs of a fish, except the flap of flesh and skin that surrounds the gut cavity, have been removed	FLP
Beak and mouth - applies only to squid. Means, the state in which the head, mantle, tentacles, and all internal organs, except the beak and mouth, have been removed	BEA
Livers by-product - means the state in which the head, body, and all internal organs of a fish, except the liver, have been removed	LIB
Cheeks - means the state in which the head, body, and internal organs of a fish, except that portion of flesh with skin still attached that is extracted from the head forward of the operculum (gill cover), have been removed	CHK
Lugs or collars - means the state in which the head of a fish has been retained after the flesh has been dressed, and the flesh, with the skin still attached from immediately behind the head, has been retained	LUG
Sounds or swim bladders - means the state in which the head, body, and all internal organs of a fish, except the swim bladders, have been removed	SWB
Squid wings - means the state in which the head, mantle, tentacles and all internal organs of a squid, except the mangle wings, have been removed	WIN
Tentacles by-product - applies only to squid and octopus. Means, the additional product state in which the head, mantle, and all internal organs have been removed	TNB
Gut by-product - means an additional product state in which the internal organs of a fish have been removed from the body cavity	GBP
Minced frames - means the state in which what remains of a fish after its head, flesh and internal organs have been removed is rendered by machine into a minced form	FMC
Frames - means the state in which the head, flesh and internal organs have been removed from a fish	FRA
Skins - means the state in which all parts of a fish, except the skin, have been removed	XSK

Part 4: Container type codes

Container type	Corresponding container type code
Bin	BIN
Box	BOX
Basket	BAS
Tray	TRA
Block	BLO
Cage	CAG
Bag	BAG
Carton	CAR
Sack	SAC
String	STR
Individual fish landed under an approval under section 111 of the Act	FIS

Part 5: Disposal codes

Disposal type	Disposal code	Required to be recorded on Monthly Harvest Return?
Fish or fish product used for human consumption on board a vessel	E	Yes
Fish or fish product of a stock managed under the QMS that are abandoned in the sea, or accidentally lost at sea, except for fish or fish product to which another disposal code applies	A	Yes
Loss of fish or fish product from a holding container in the water (e.g., through theft, mortality, escape, or damage to fish product)	HW	Yes
Fish or fish product taken or used for bait during the period of a trip	U	Yes
Spiny dogfish that are returned to the water	M	Yes
Blue shark (<i>Prionace glauca</i>), mako shark (<i>Isurus oxyrinchus</i>) or porbeagle shark (<i>Lamna nasus</i>) that are returned to the water dead or near-dead in accordance with the requirements set out for those species in the Fisheries (Landings and Discards Exceptions) Notice	Z	Yes
Fish or fish products of a stock subject to the QMS that are returned to, or abandoned in, the sea in accordance with the requirements set out in section 72(5)(c)(i) to (iii) of the Act	J	Yes
Fish or other animal that is aquatic life that is subject to the QMS and are returned to, or abandoned in, the sea under section 72(5)(ba) of the Act	I	No
Fish or fish product of a stock not managed under the QMS that are returned to the sea, abandoned in the sea, or accidentally lost at sea	D	No
Fish or fish product placed in a holding receptacle in New Zealand fisheries waters	P	No
Fish of stocks subject to the QMS that are— (a) listed in the Fisheries (Landings and Discards Exceptions) Notice; and (b) not spiny dogfish; and (c) not blue shark, mako shark or porbeagle shark that are returned to the water dead or near-dead; and (d) not rock lobster that must be returned to the sea; and (e) returned to the water in accordance with the requirements set out for the relevant species or class of fish in the Fisheries (Landings and Discards Exceptions) Notice	X	No
Fish below a minimum legal size, width or weight	Y	No
Fish above a maximum legal size, width or weight	G	No
Rock lobster that is alive and must be returned to the sea (excludes rock lobster below a minimum legal size)	K	No
Fish or fish product removed from holding receptacle in New Zealand fisheries waters	N	No

Part 6: Landing codes

Landing type	Landing code	Required to be recorded on Monthly Harvest Return?
Fish or fish product conveyed or sold to an LFR at the time of landing	L	Yes
Live fish that is placed in a holding container on land at the conclusion of a trip	LF	No
Fish or fish product conveyed or sold to an LFR that has previously been recorded on a landing report under landing code LF	LFL	Yes
Fish or fish product conveyed or sold to an LFR at the time of landing but that has previously recorded under landing code R	LR	Yes
Fish or fish product conveyed or transported on a vessel leaving the exclusive economic zone by its seaward boundary having been granted permission to do so under section 110 of the Act	O	Yes
Fish defined as landed under regulation 4(2)(b) of the Fisheries (Reporting) Regulations 2017 (end of fishing year)	EOY	Yes
Fish or fish product seized by a Fishery Officer under section 207 of the Act	S	Yes
Fish or fish products sold under section 191(2) of the Act (commonly referred to as wharf sales)	W	Yes
Loss of fish or fish product from a holding container on land (e.g., through mortality, escape, or damage to fish product)	HL	Yes
Fish or fish product taken and stored during the period of a trip for subsequent use as bait for personal use	B	Yes
Fish or fish product conveyed or sold to an LFR after being transferred from a vessel to another vessel. In this scenario all catch balancing and reporting obligations lie with the operator of the vessel that caught the fish. See below:	TL	Yes
Fish or fish product retained on board a vessel at the time of landing	R	No
Fish or fish product conveyed or sold to an LFR after being transferred from one vessel to another. In this scenario catch balancing obligations, lie with the operator of vessel to which the fish was transferred together with the obligation to record the fish received on a landing report. See below:	TT	No ⁵
Fish landed under an approval under section 111 of the Act	F	No
Fish or fish product, excluding live fish, placed in a holding container on land at the time of landing, before being conveyed or sold to an LFR. However, if another landing code also applies, use that code instead. See below:	QL	Yes

⁵ Fish recorded under this code is not required to be recorded on an MHR by the operator of the vessel from which the fish was transferred.

Fish or fish product taken by a scientific observer under Part 12 of the Act	V	No
Predated fish (any QMS fish that has been damaged by other organisms and is unfit for human consumption)	PF	Yes
Fish or fish product taken under section 81A of the Animal Products Act 1999, for the purposes of biotoxin sampling	BS	No
Fish or fish product, excluding live fish, that is not conveyed or sold to an LFR, or sold under section 191(2) of the Act (commonly referred to as wharf sales), and is placed in a holding container on land before being disposed of under section 191(1)(c) of the Act to a disposal facility in accordance with circulars made under regulation 81D of the Fisheries (Commercial Fishing Regulations) 2001	QWM	Yes
Fish or fish product that is not conveyed or sold to an LFR, or sold under section 191(2) of the Act (commonly referred to as wharf sales), and has been disposed of to a disposal facility in accordance with circulars made under regulation 81D of the Fisheries (Commercial Fishing Regulations) 2001	WM	Yes

Further explanation for the use of the TL, TT, QL and QWM landing codes

TL landing code

- If it is a transhipment where the catch is owned by the catching vessel. (TL)
 - 1) Vessel A completes Landing Report with landing code TL as soon as catch is transferred to vessel B (along with registration number of vessel B)
 - 2) Vessel B has no reporting obligations but **must keep transhipped catch separate from other catch on board** and inform LFR of catching vessel A details.
 - 3) LFR provides greenweight information for vessel A to update Landing Report

TT landing code

- If it is a transhipment where the catch is owned by the landing vessel. (TT)
 - 1) Vessel A completes Landing Report with landing code TT as soon as catch is transferred to vessel B (along with registration number of vessel B and greenweight estimate).
 - 2) Vessel B takes ownership of catch and reporting obligations (including MHR). **The transhipped catch does not need to be kept separate from other catch on board.**
 - 3) Vessel B completes Landing Report with landing code L.
 - 4) LFR provides greenweight information for vessel B to update Landing Report

QL landing code

- If dead fish or fish product is stored on land in a holding container after landing and before being sold to a licenced fish receiver (QL)
 - 1) The fisher must:
 - a. Keep a record so that fish or fish product being stored is identifiable on a per-fishing trip basis, in accordance with regulation 4(d) of the Fisheries (Recordkeeping) Regulations 1990; and
 - b. Use the QL landing code in the landing report for the fishing trip that the stored fish relates to.
 - 2) Catch from more than one trip may be placed into the same holding container

- 3) The fish product is sold or otherwise conveyed to the licenced fish receiver.
- 4) The licenced fish receiver provides greenweight information.
- 5) Based on information provided by the licenced fish receiver, the fisher then updates each landing report with the corresponding greenweight.
- 6) If the licenced fish receiver information is not provided on a trip-specific basis, the fisher may pro rata the information in a manner that is consistent with the information having been provided for each separate trip.

QWM landing code

- If dead fish or fish product is stored on land in a holding container after landing and before being disposed of to a disposal facility under section 191(1)(c) of the Act (QWM)
 - 1) The fisher must:
 - a. Keep a record so that fish and fish product being stored is identifiable on a per-fishing trip basis, in accordance with regulation 4(d) of the Fisheries (Recordkeeping) Regulations 1990
 - b. Keep a record of the species by greenweight of all fish stored under QWM
 - c. Use the QWM landing code in the landing report for the fishing trip that the stored fish relates to.
 - 2) Fish and fish product from more than one trip may be placed in the same holding container prior to being disposed of to a disposal facility.
 - 3) Fish and fish product from multiple fishing trips stored prior to disposal may be disposed of to a disposal facility at the same time.
 - 4) QWM in the landing report does not need to be amended to WM following final disposal.

WM landing code

- The fish or fish product is disposed of on land to a disposal facility without having been stored prior to disposal.
 - 1) The fisher must:
 - a. Keep a record so that fish and fish product disposed of to a disposal facility is identifiable on a per-fishing trip basis, in accordance with regulation 4(d) of the Fisheries (Recordkeeping) Regulations 1990
 - b. Keep a record of the species by greenweight of all fish disposed of to a disposal facility under WM. See page 45 on determining greenweight weight for the WM code.
 - c. Use the WM landing code in the landing report for the fishing trip relating to the fish and fish product disposed of to a disposal facility.
 - 2) Fish and fish product from multiple fishing trips may be disposed of to a disposal at the same time.

Part 7: Fishing method codes

Fishing method	Method code	Fish catch report type
Bottom trawl - single	BT	Trawl
Bottom trawl - pair	BPT	Trawl
Midwater trawl - single	MW	Trawl
Midwater trawl - pair	MPT	Trawl
Precision bottom trawl	PRB	Trawl
Precision midwater trawl	PRM	Trawl
Inshore drift netting	DN	Netting
Pair set netting	PSN	Netting
Set netting (including Gill nets)	SN	Netting
Ring net	RN	Netting
Bottom longlining	BLL	Lining
Drop/dahn lines	DL	Lining
Trot lines	TL	Lining
Cod potting	CP	Potting
Crab potting	CRP	Potting
Eel potting (Hinaki)	EP	Potting
Fish traps (including Box/Teiche nets)	FP	Potting
Fyke netting (eels)	FN	Potting
Ellesmere-type fyke netting (eels)	EFN	Potting
Potting (other)	POT	Potting
Octopus potting	OCP	Potting
Rock lobster potting	RLP	Potting
Scampi pots	SCP	Potting
Diving Combined (snorkel, scuba and surface supplied)	DV	Diving
Beach Seine/Drag nets	BS	Seining
Danish seining—single	DS	Seining
Danish Seine—pair	DPS	Seining
Dip netting	DPN	Seining
Lampara	L	Seining
Purse seining	PS	Seining

Scoop nets	SCN	Seining
Hand-gathering	H	Hand-gathering
Dredging	D	Dredging
Mechanical harvesting	MH	Dredging
Hand-lining	HL	Other-Lining
Trolling	T	Other-Lining
Pole and line	PL	Other-Lining
Surface longlining	SLL	Tuna-Lining
Squid jigging	SJ	Jigging

Part 8: Mitigation equipment / operational practice codes

Part 8A: Mitigation equipment / operational practice codes for >28m trawl vessels

Mitigation equipment / operational practice	Mitigation equipment / operational practice code
Bird baffle – two booms perpendicular to vessel	BIB
Bird baffle – four boom	BIF
Bird baffle – with curtain between booms	BIC
Paired streamer lines (also known as tori lines)	STR
Warp Deflector	WAD
Sea Lion Exclusion Device (SLED)	SLE
Dolphin Dissuasive Devices (DDD) (also known as pingers)	DDD
Stickers cleared from net before shooting	STK
Minced fish waste discharged during towing	MFW
Fish waste batch discharged during towing	BFW
No fish waste discharged during towing	NFW
Net restrictors used in centre net when using triple-rig	CNR
Single streamer (tori) line	TLS
Other	OTH
None	NMD

Guidance

- In this context, fish waste does not include fish released under the provisions of the Fisheries (Landings and Discards Exceptions) Notice, fish that are below the minimum legal size for that species, or protected fish species.
- Reporting the use of net restrictors and single streamer (tori) lines is most applicable to vessels operating in the scampi target fishery.
- If you record OTH (other type of mitigation equipment / operational practice), please use the 'notes' field to indicate what this is.
- If you record 'None', please use the 'notes' field to indicate why. This code should only be used under exceptional circumstances.
- Stickers refers to finfish and shellfish.

Part 8B: Mitigation equipment / operational practice codes for <28m trawl vessels

Mitigation equipment / operational practice	Mitigation equipment / operational practice code
Bird baffle – two booms perpendicular to vessel	BIB
Paired streamer lines (also known as tori lines)	STR
Single streamer (tori) line	TLS
Stickers cleared from net before shooting	STK
Warp deflector used during towing (on warp closest to side of vessel from which fish waste is discharged)	WDT
Other type of warp protection device used during towing (on warp closest to side of vessel from which fish waste is discharged)	WPT
Second warp deflector or warp protection device deployed during towing (on warp away from side of vessel from which fish waste is discharged)	SWD
No warp protection device, including tori lines, used during towing	NWD
Fish waste batch discharged during towing	BFW
No fish waste discharged during towing	NFW
Net restrictors used in centre net when using triple-rig	CNR
Other	OTH
None	NMD

Guidance

- In this context, fish waste does not include fish released under the provisions of the Fisheries (Landings and Discards Exceptions) Notice, fish that are below the minimum legal size for that species, or protected fish species.
- Reporting the use of net restrictors is only applicable to vessels operating in the scampi target fishery.
- Reporting use of a second warp deflector or warp protection device is not applicable to vessels that only have one warp.
- If you record OTH (other type of mitigation equipment / operational practice), please use the 'notes' field to indicate what this is.
- If you record 'None', please use the 'notes' field to indicate why. This code should only be used under exceptional circumstances.
- Stickers refers to finfish and shellfish.

Part 8C: Mitigation equipment / operational practice codes for vessels using bottom longline (BLL) and trot line (TL) methods

Mitigation equipment / operational practice	Mitigation equipment / operational practice code
Streamer line (also known as a tori line)	STR
High-risk period line weighting regime	HLW
Thawed or semi-thawed bait used	TBU
Haul mitigation device	HMD
Other deterrent during hauling (e.g., water sprayer or sound)	OMH
All used baits retained on board during hauling	BRH
All fish and fish waste discharged on opposite side of vessel to hauling station	WDO
Other	OTH
None	NMD

Guidance

- In this context, fish and fish waste does not include fish released under the provisions of the Fisheries (Landings and Discards Exceptions) Notice, fish that are below the minimum legal size for that species, or protected fish species.⁶
- The term 'high-risk period' is defined in the bottom longline Mitigation Standards⁷.
- In this context, thawed or semi-thawed bait means bait is used that is not completely frozen when hooks are set.
- Haul mitigation devices includes the type of device referred to as a Brickle Curtain.
- If more than one tori line is deployed, please record this in the 'notes' field.
- If you record OTH (other type of mitigation equipment / operational practice), please use the 'notes' field to indicate what this is.
- If you record 'None', please use the 'notes' field to indicate why. This code should only be used under exceptional circumstances.

⁶ Refer to the circular setting out legislative requirements for fishers using bottom longline gear for details of fish that can be released on the same side of the vessel as the hauling station – available [here](#).

⁷The autoline and hand-baiting Mitigation Standards are available [here](#)

Part 8D: Mitigation equipment / operational practice codes for surface longline vessels

Mitigation equipment / operational practice	Mitigation equipment / operational practice code
Hook-shielding devices on 100% of hooks	HOP
Hook-shielding devices on < 100% of hooks	HSD
Streamer line (also known as a tori line)	STR
Underwater bait setter	UWB
Thawed or semi-thawed bait used	TBU
Haul mitigation device	HMD
Other deterrent during hauling (e.g., water sprayer or sound)	OMH
Used baits retained on board during hauling	BRH
All fish waste held during hauling	HFW
Fish waste batch discharged at intervals of >30 minutes during hauling	FWI
Other	OTH
None	NMD

Guidance

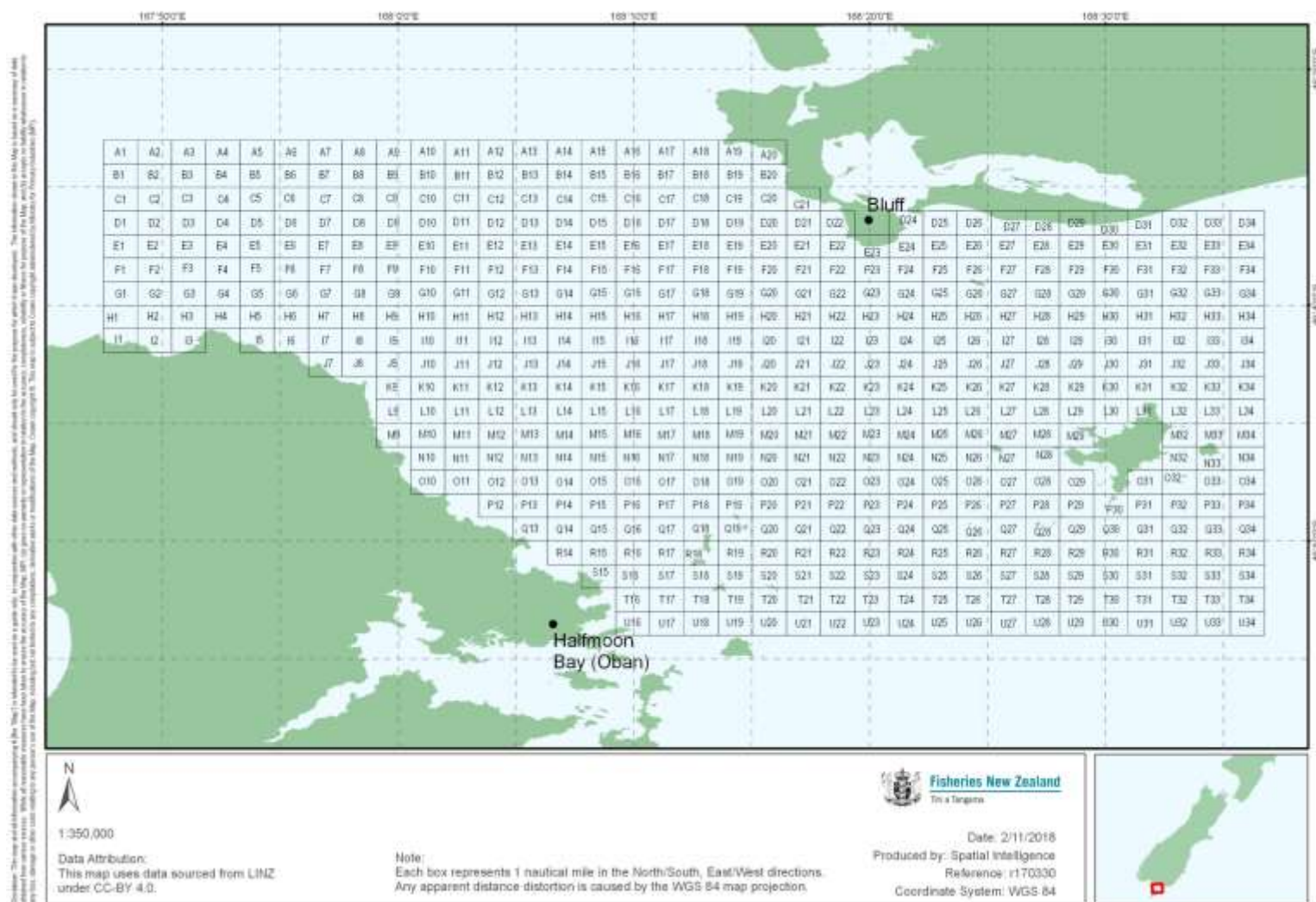
- In this context, fish and fish waste does not include fish released under the provisions of the Fisheries (Landings and Discards Exceptions) Notice, fish that are below the minimum legal size for that species, or protected fish species.
- In this context, thawed or semi-thawed bait means bait is used that is not completely frozen when hooks are set.
- Haul mitigation devices includes the type of device referred to as a Brickle Curtain.
- If you record OTH (other type of mitigation equipment / operational practice), please use the 'notes' field to indicate what this is.
- An underwater bait setter is a mechanical device that encloses baited hooks and takes them to a pre-determined depth before releasing them.
- If you record 'None', please use the 'notes' field to indicate why. This code should only be used under exceptional circumstances.

Part 9: Diving breath mode codes

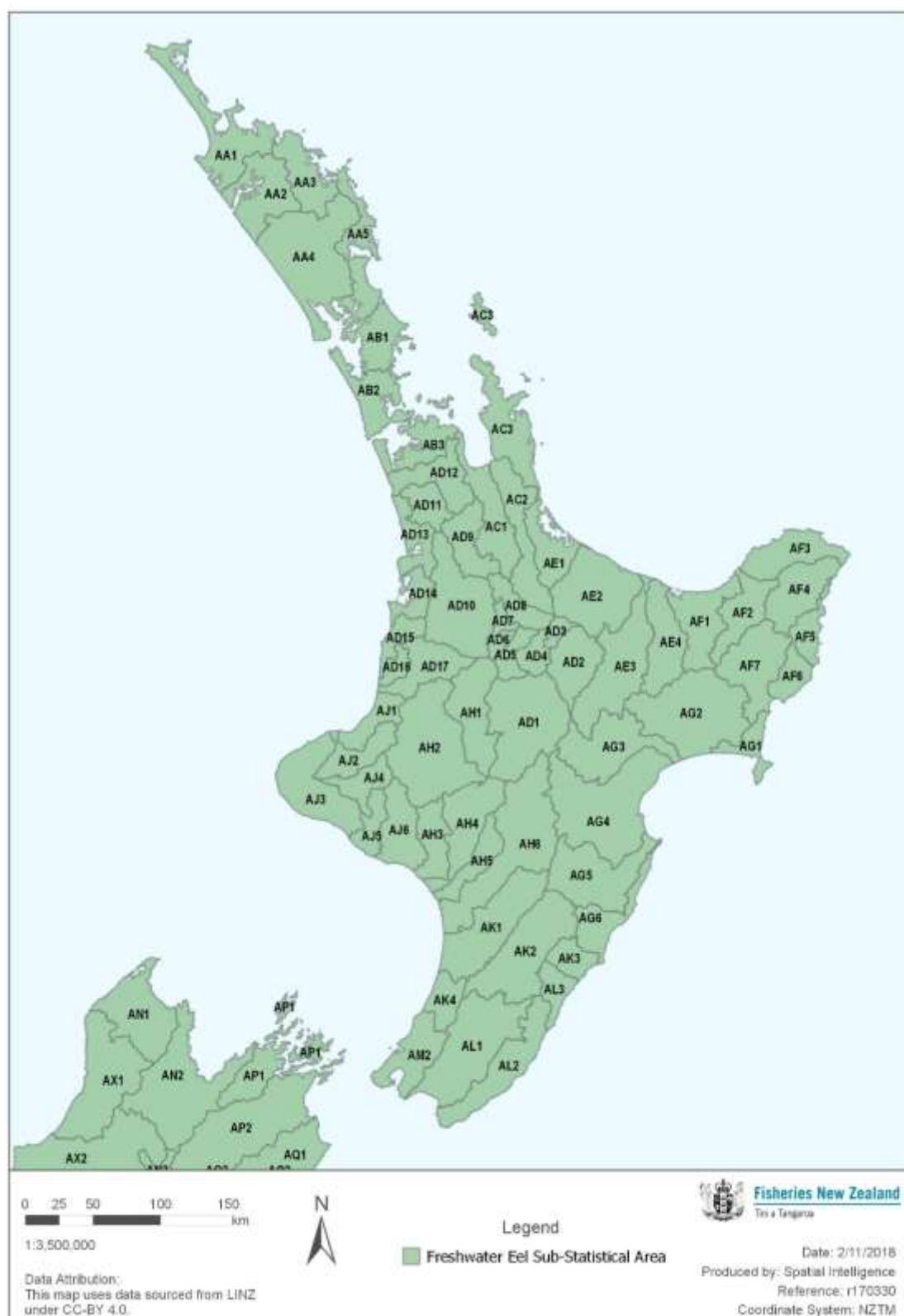
Breath mode name	Breath mode code
Snorkel	SK
Scuba - Steel Tank	ST
Scuba - Aluminium Tank	AL
Surface Supplied	SS

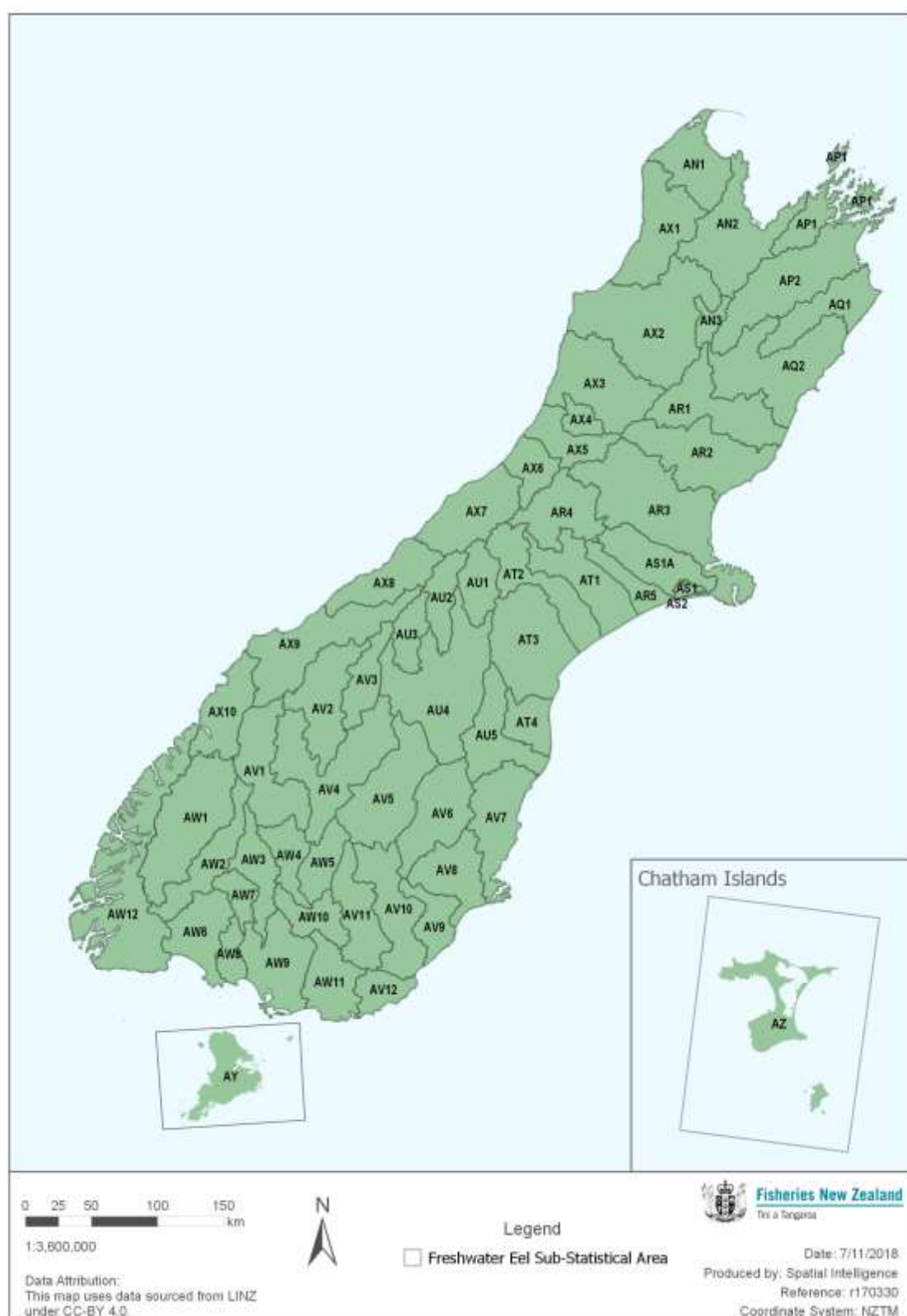
Schedule 3 – Reference maps for certain fish catch reports

Part 1: Map showing grid for OYU5 (Bluff oyster) fishery

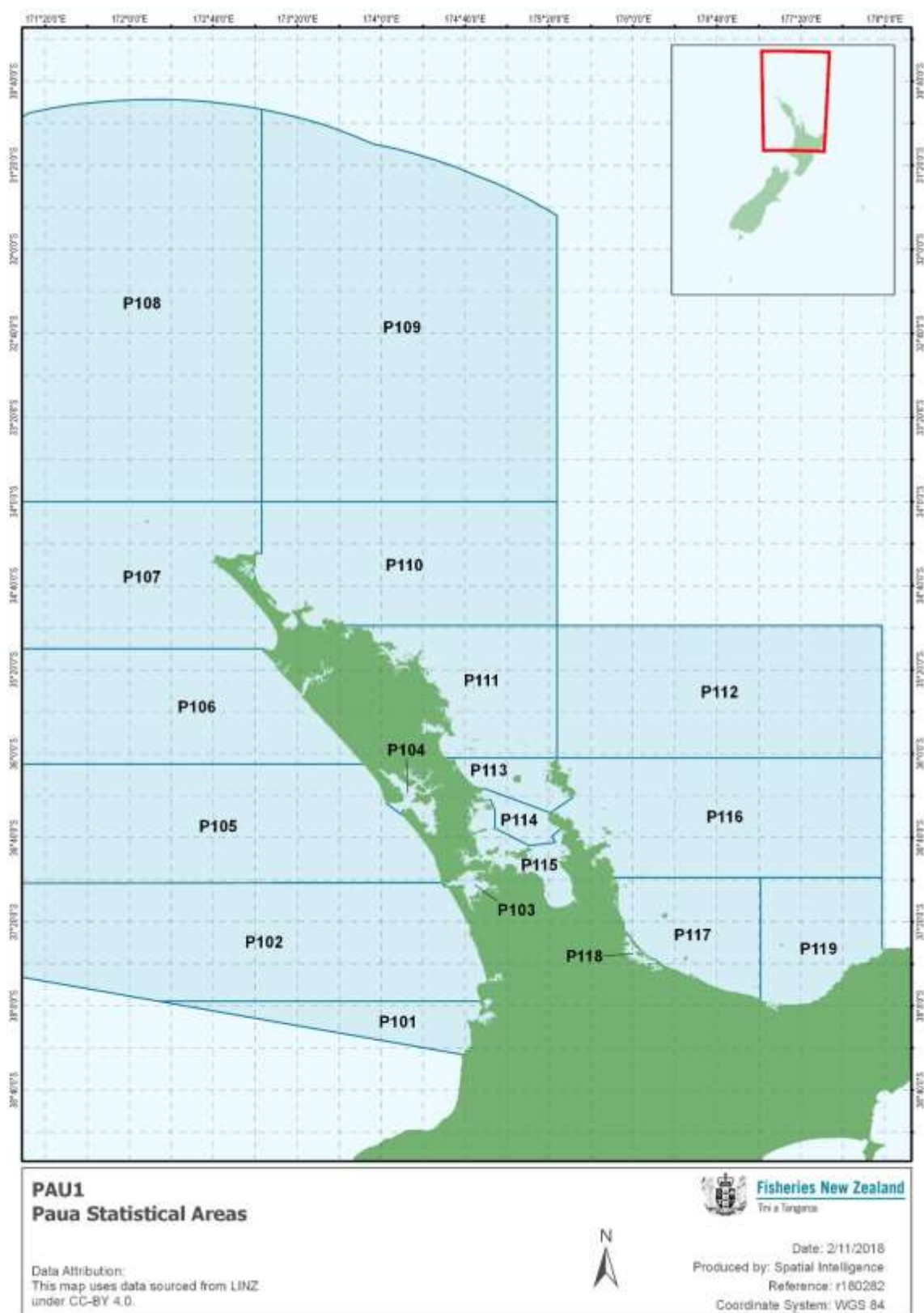


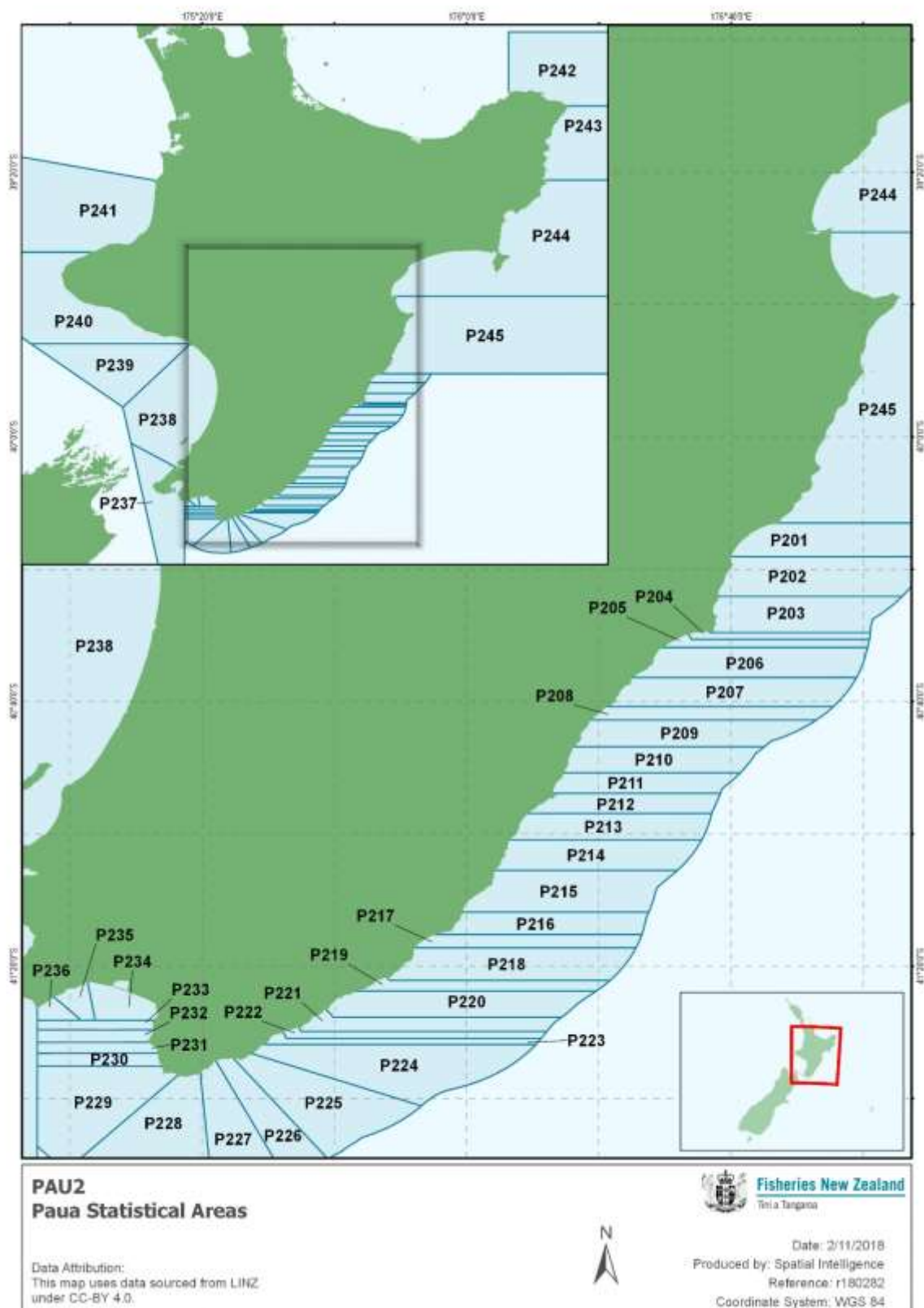
Part 2: Sub-statistical areas for freshwater eels

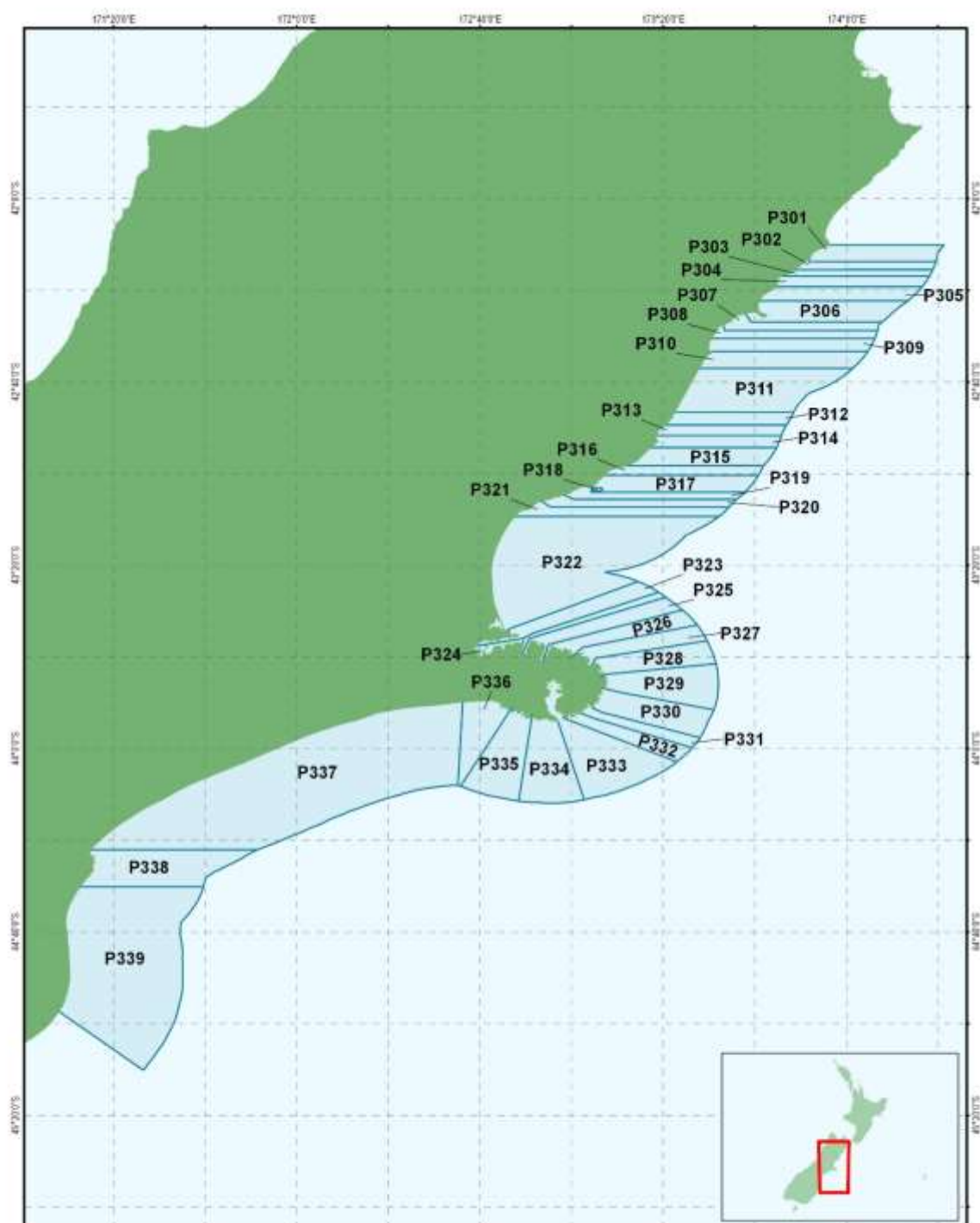




Part 3: Statistical areas for paua







PAU3 Paua Statistical Areas

Data Attribution:
This map uses data sourced from LINZ
under CC-BY 4.0.



Fisheries New Zealand
Tei a Tangaroa



Date: 2/11/2018
Produced by: Spatial Intelligence
Reference: r180282
Coordinate System: WGS 84

Disclaimer: This map and all information accompanying it (the "Map") is intended to be used as a guide only, in conjunction with other data sources and methods, and should only be used for the purposes for which it was developed. This information shown in this Map is based on a summary of data obtained from various sources. While all reasonable measures have been taken to ensure the accuracy of the Map, MFI (or its licensors) does not warrant or represent in relation to the accuracy, completeness, reliability or fitness for purpose of the Map, and (ii) accepts no liability whatsoever in relation to any loss, damage or other costs resulting from any person's use of the Map, including but not limited to any consequential, derivative or other losses. This map is subject to Crown copyright administered by Ministry for Primary Industries (MPI).

