

## 9.0 Appendix 1: Maui's dolphin TMP supporting maps

**Map 1.** Context map identifying the location of commonly referred to place names on the west coast of the North Island in the body of this paper, and the boundaries of the Marine Mammal Sanctuary.

**Map 2.** Locations of live Maui's dolphins and Hector's dolphins sighted and biopsied off the west coast of the North Island.

**Map 3.** Locations of Maui's dolphins and Hector's dolphins (DNA confirmed) and Hector's or Maui's (subspecies unknown) mortalities along the west coast of the North Island.

**Map 4.** Locations of research and DOC/MPI sightings of Maui's and/or Hector's dolphins off the west coast of the North Island. Research survey areas are also identified and show the variation in the intensity of research effort that has occurred along the coast and offshore.

**Map 5.** Locations of public sightings of Maui's and/or Hector's dolphins off the west coast of the North Island. These sightings represent those that have been subject to a validation process and categorised in terms of reliability as Category 1, 2 or 3.

**Map 6.** Locations of research (including acoustic detections), DOC/MPI, and public sightings (Categories 1, 2 and 3) of Maui's and/or Hector's dolphins in or near the Kaipara, Manukau, Aotea/Kawhia and Raglan harbours along the west coast of the North Island.

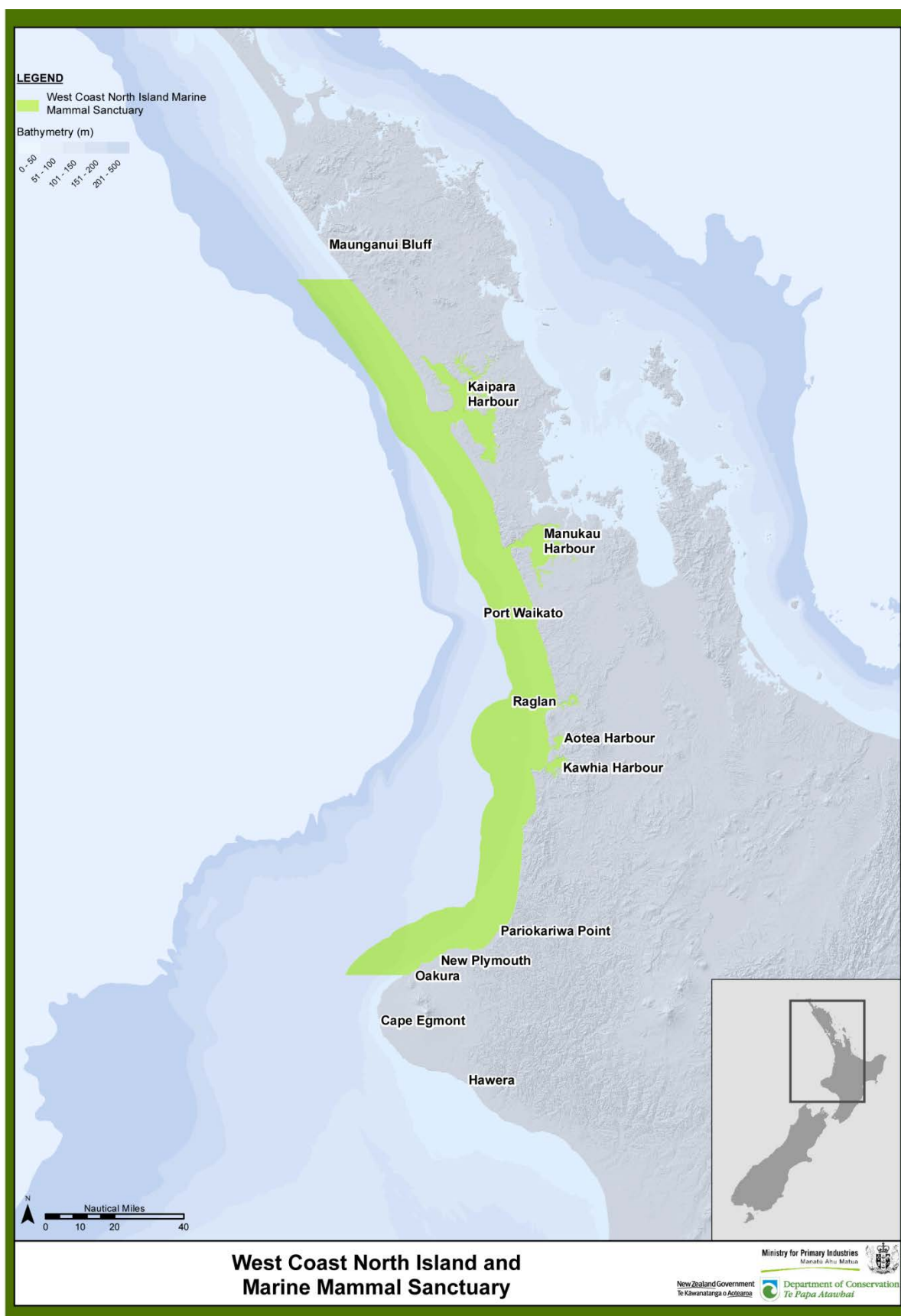
**Map 7.** Locations of seismic survey tracks from 2000-2005 and 2006-2010 off the west coast of the North Island.

**Map 8.** Locations of offshore petroleum, mineral and coal mining permits off the west coast of the North Island.

**Map 9.** Locations of coastal discharge points and river mouths off the west coast of the North Island.

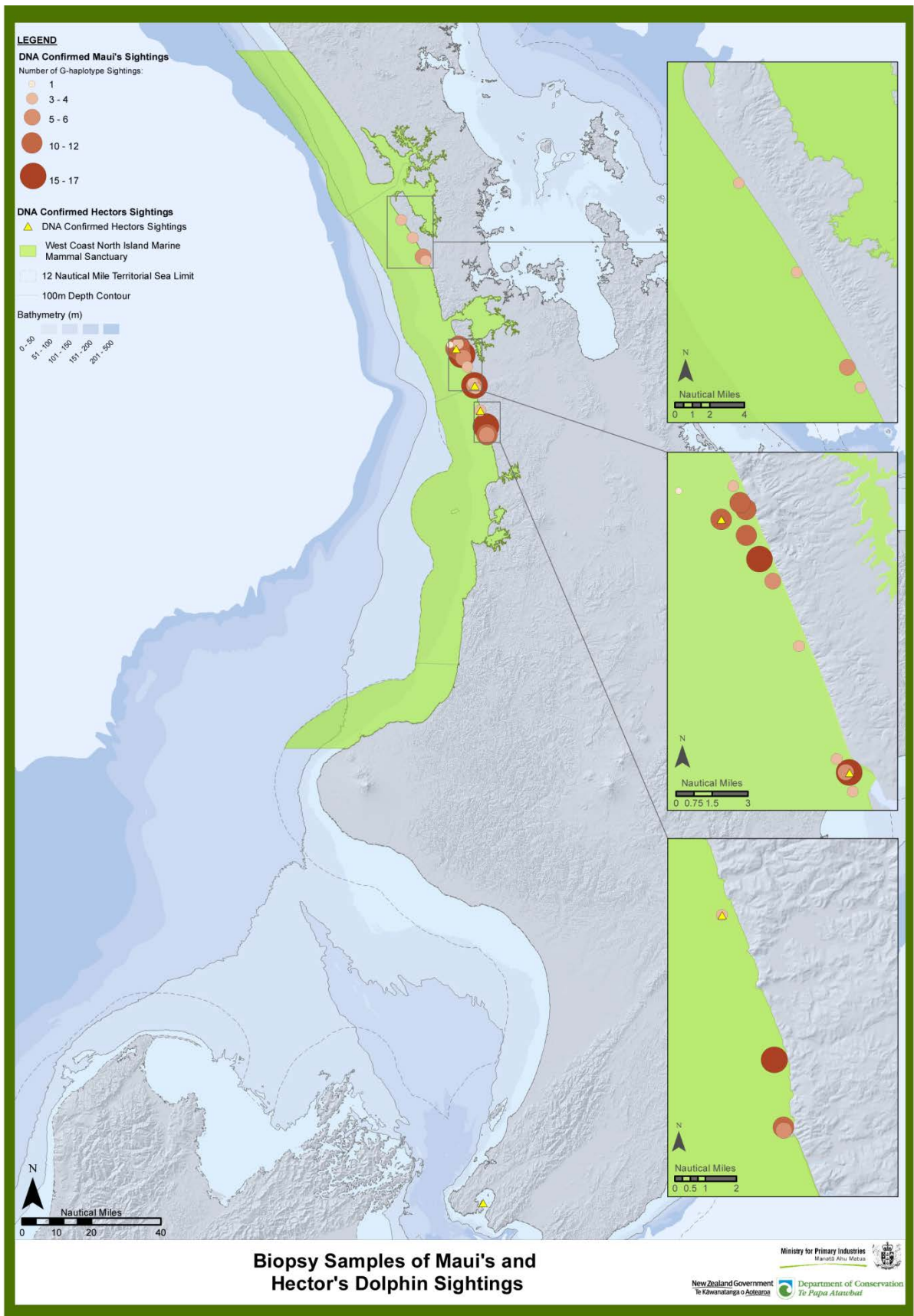
**Map 10.** Classification of oil spill risk assessment areas off the west coast of the North Island.

**Map 11.** Locations of various coastal activities (including dredging, iron sand mining, and marine farms) that occur along the west coast of the North Island.



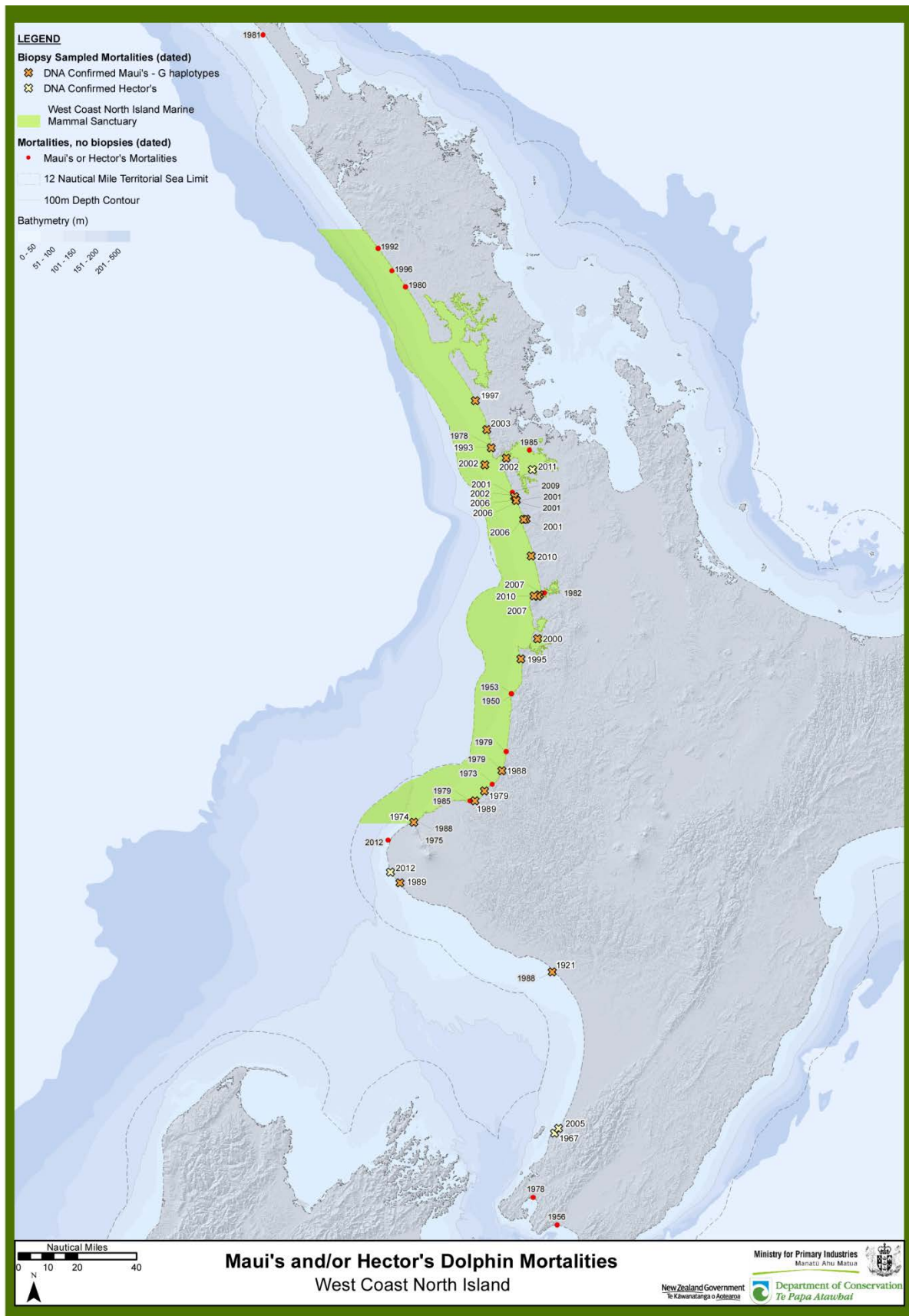
DOC makes no express or implied warranties as to the accuracy or completeness of the data or information, nor its suitability for any purpose. DOC will not accept liability for any direct, indirect, special or consequential damages, losses or expenses howsoever arising and relating to use, or lack of use, of the data or information supplied. Cadastral and Topographic information derived from Land Information New Zealand. Crown Copyright Reserved.

Map 1



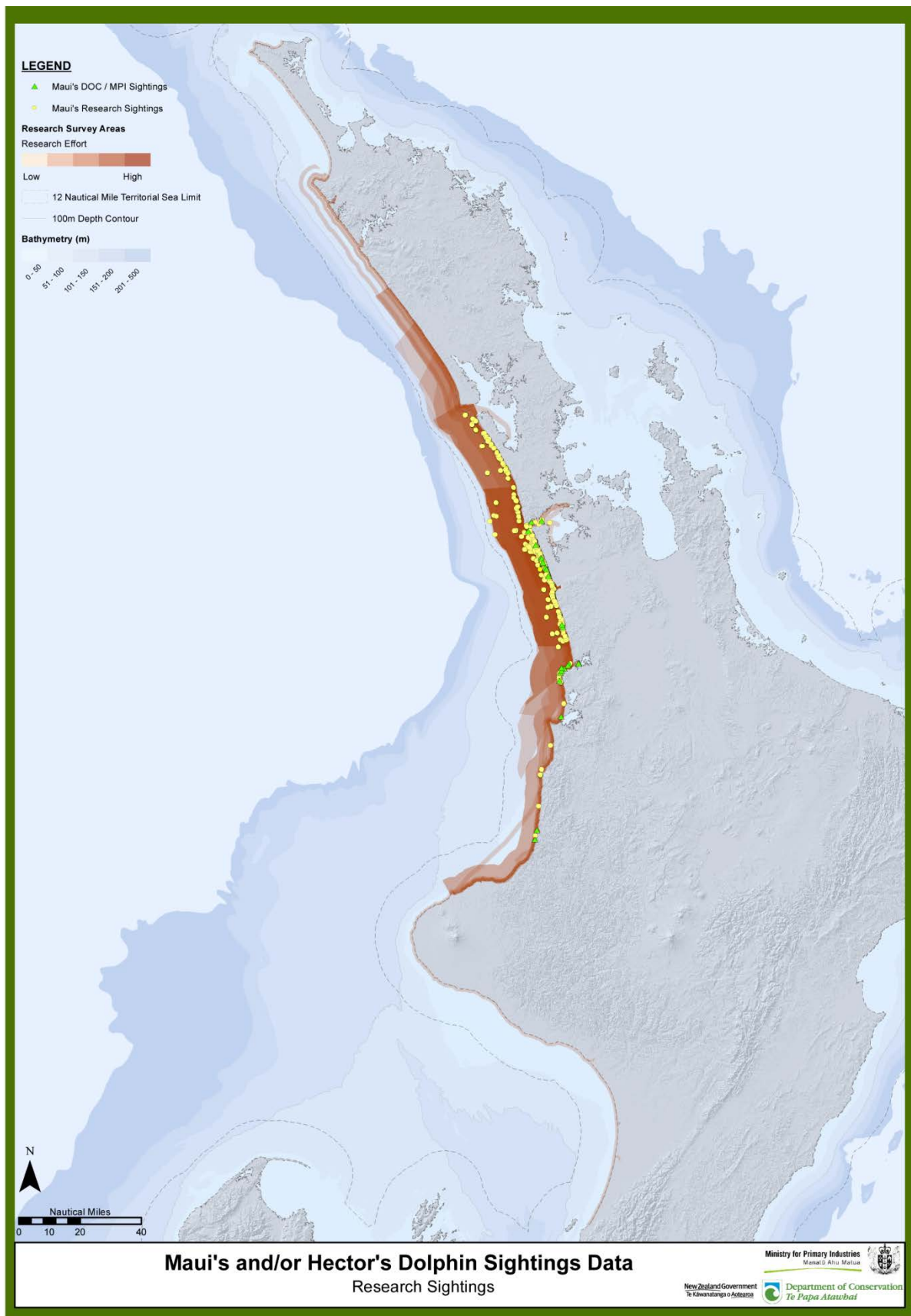
DOC makes no express or implied warranties as to the accuracy or completeness of the data or information, nor its suitability for any purpose. DOC will not accept liability for any direct, indirect, special or consequential damages, losses or expenses howsoever arising and relating to use, or lack of use, of the data or information supplied. Cadastral and Topographic information derived from Land Information New Zealand. Crown Copyright Reserved.

Map 2



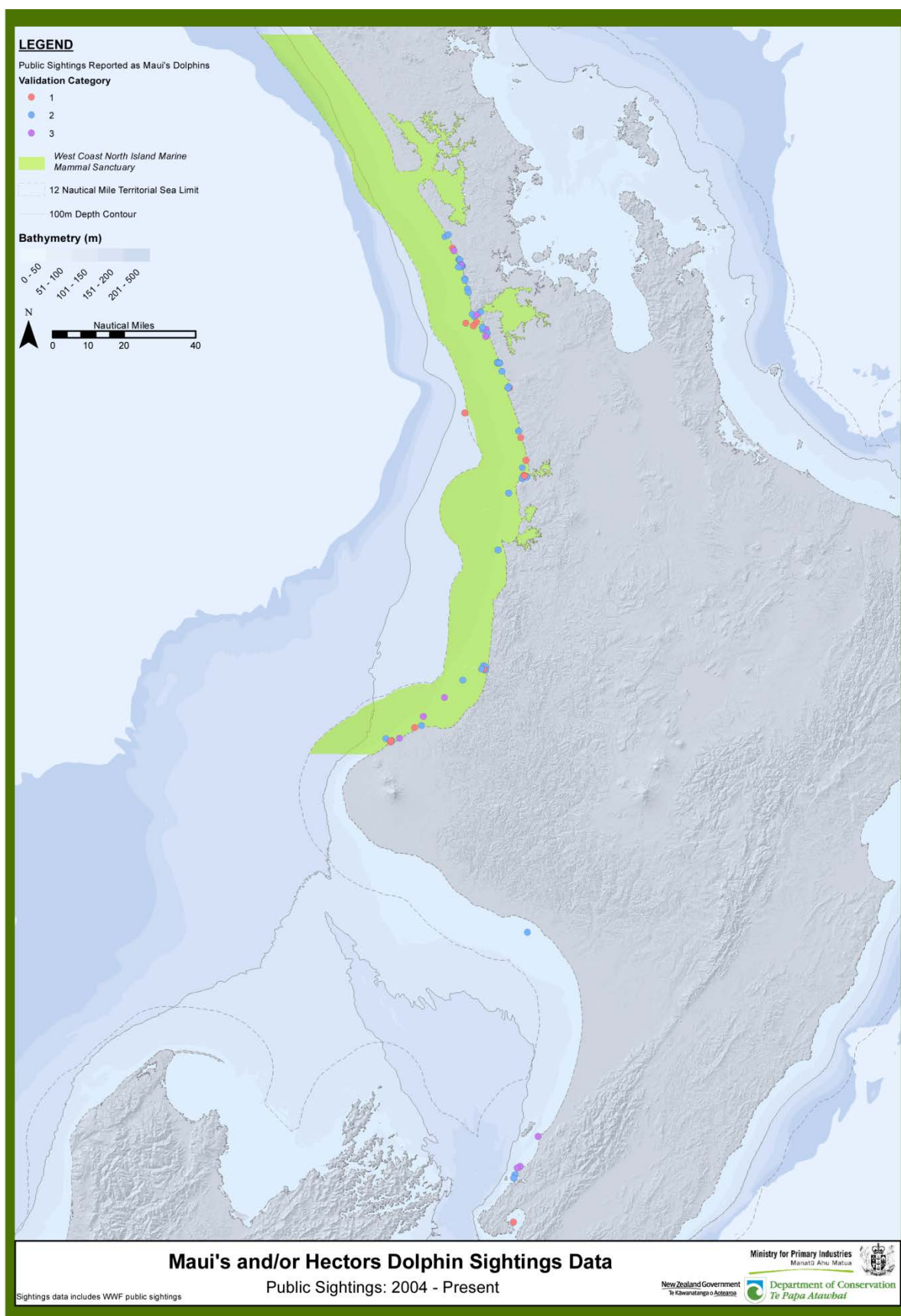
Map 3



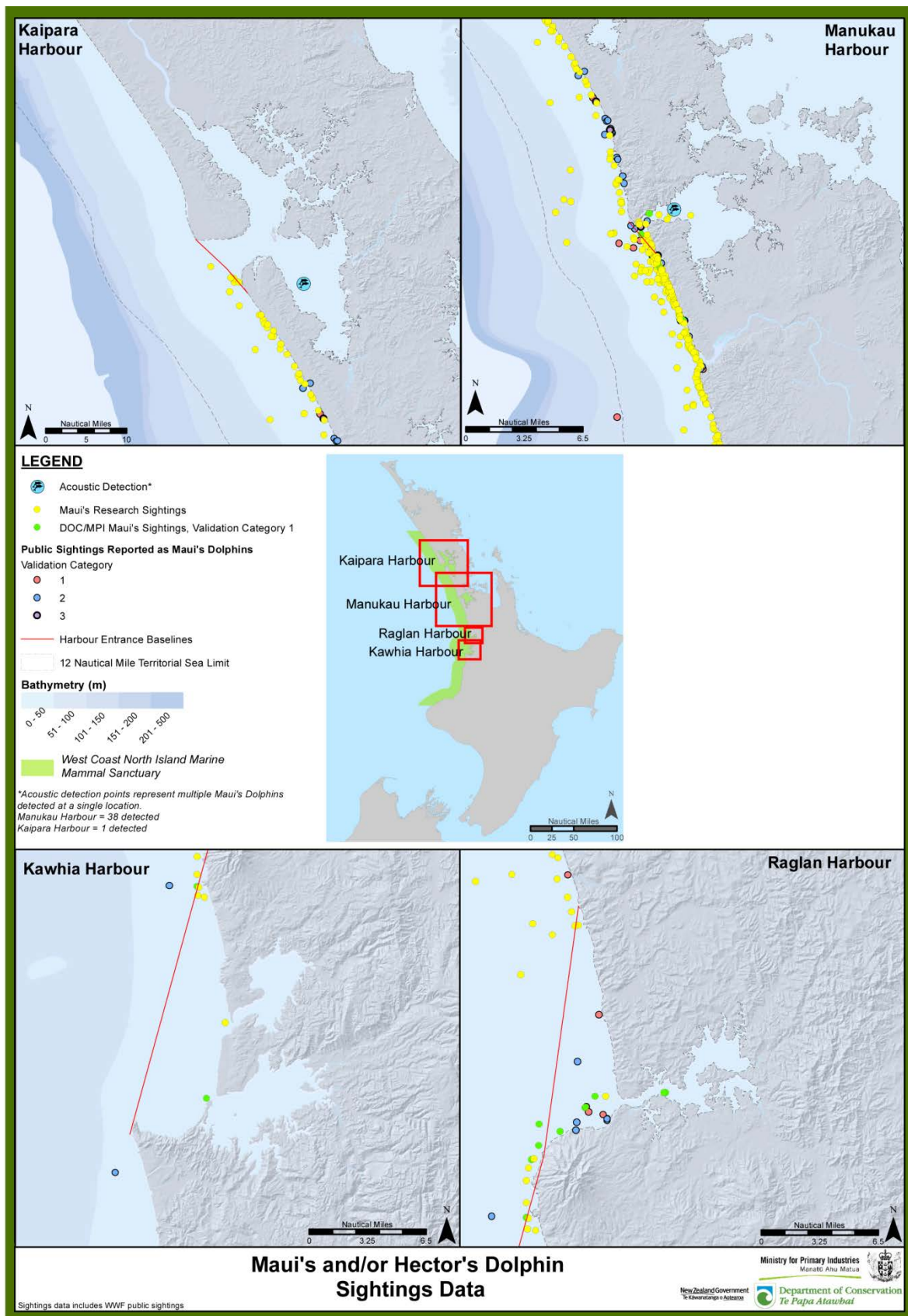


DOC makes no express or implied warranties as to the accuracy or completeness of the data or information, nor its suitability for any purpose. DOC will not accept liability for any direct, indirect, special or consequential damages, losses or expenses howsoever arising and relating to use, or lack of use, of the data or information supplied. Cadastral and Topographic information derived from Land Information New Zealand. Crown Copyright Reserved.

Map 4



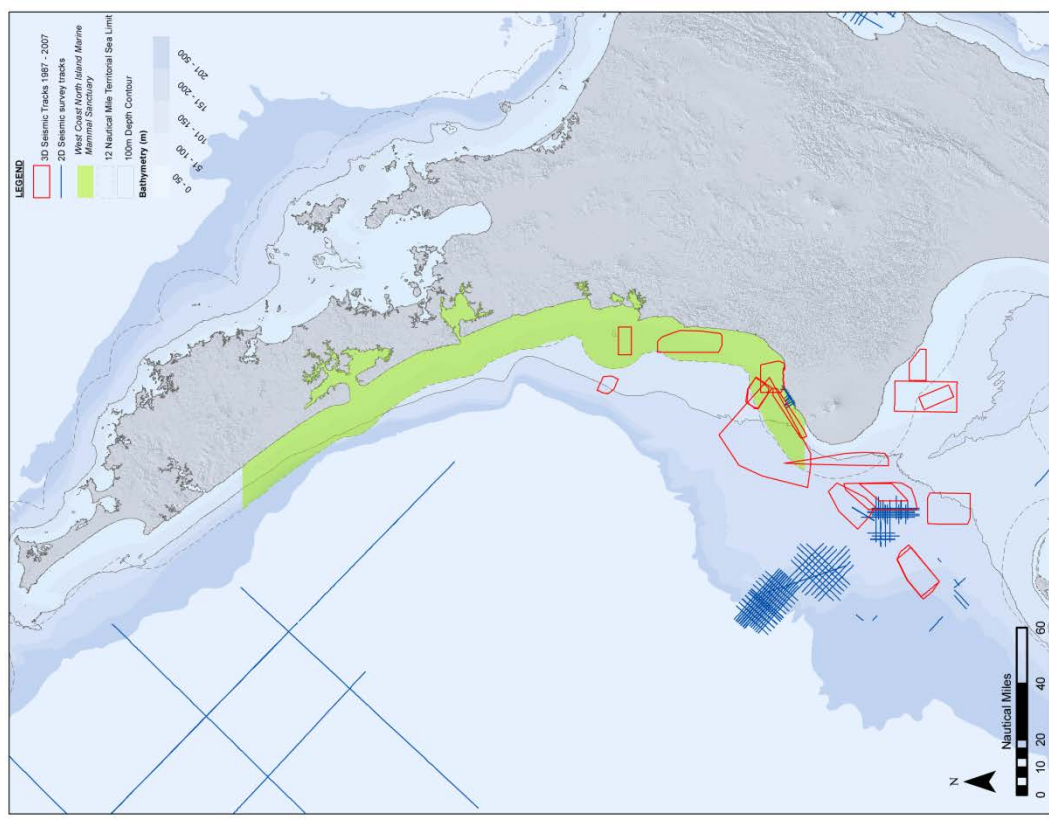
Map 5



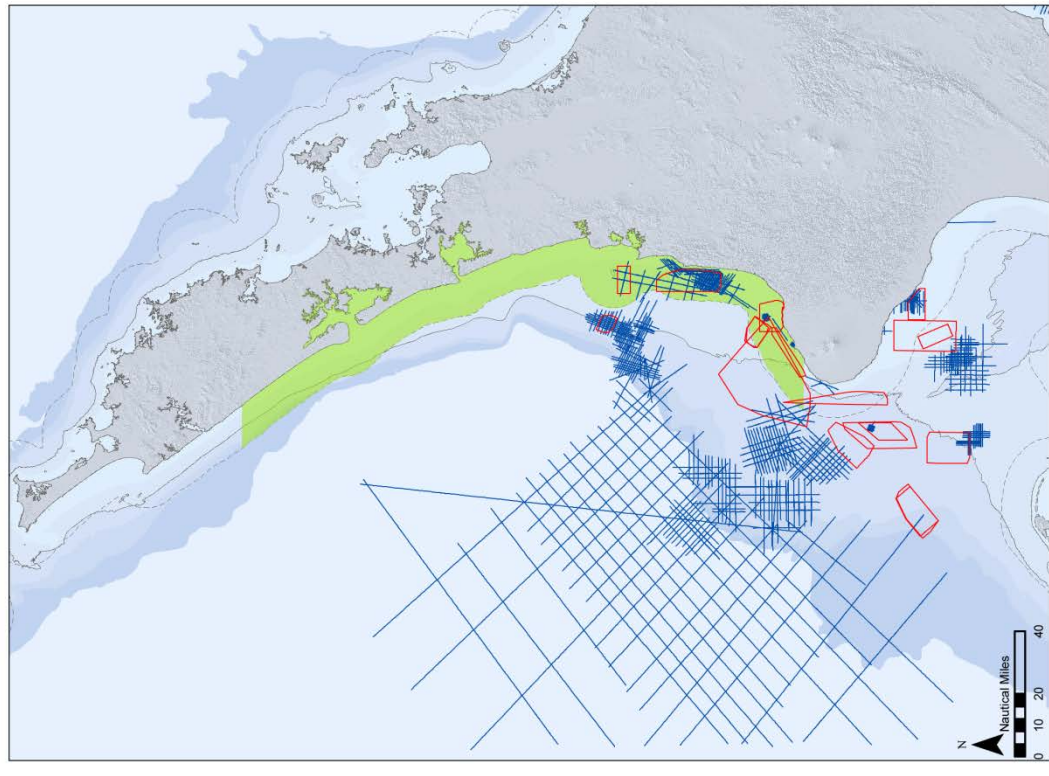
DOC makes no express or implied warranties as to the accuracy or completeness of the data or information, nor its suitability for any purpose. DOC will not accept liability for any direct, indirect, special or consequential damages, losses or expenses howsoever arising and relating to use, or lack of use, of the data or information supplied. Cadastral and Topographic information derived from Land Information New Zealand. Crown Copyright Reserved.

Map 6





**Seismic Survey Tracks Data 2006 - 2010**  
Source: Ministry of Economic Development, New Zealand

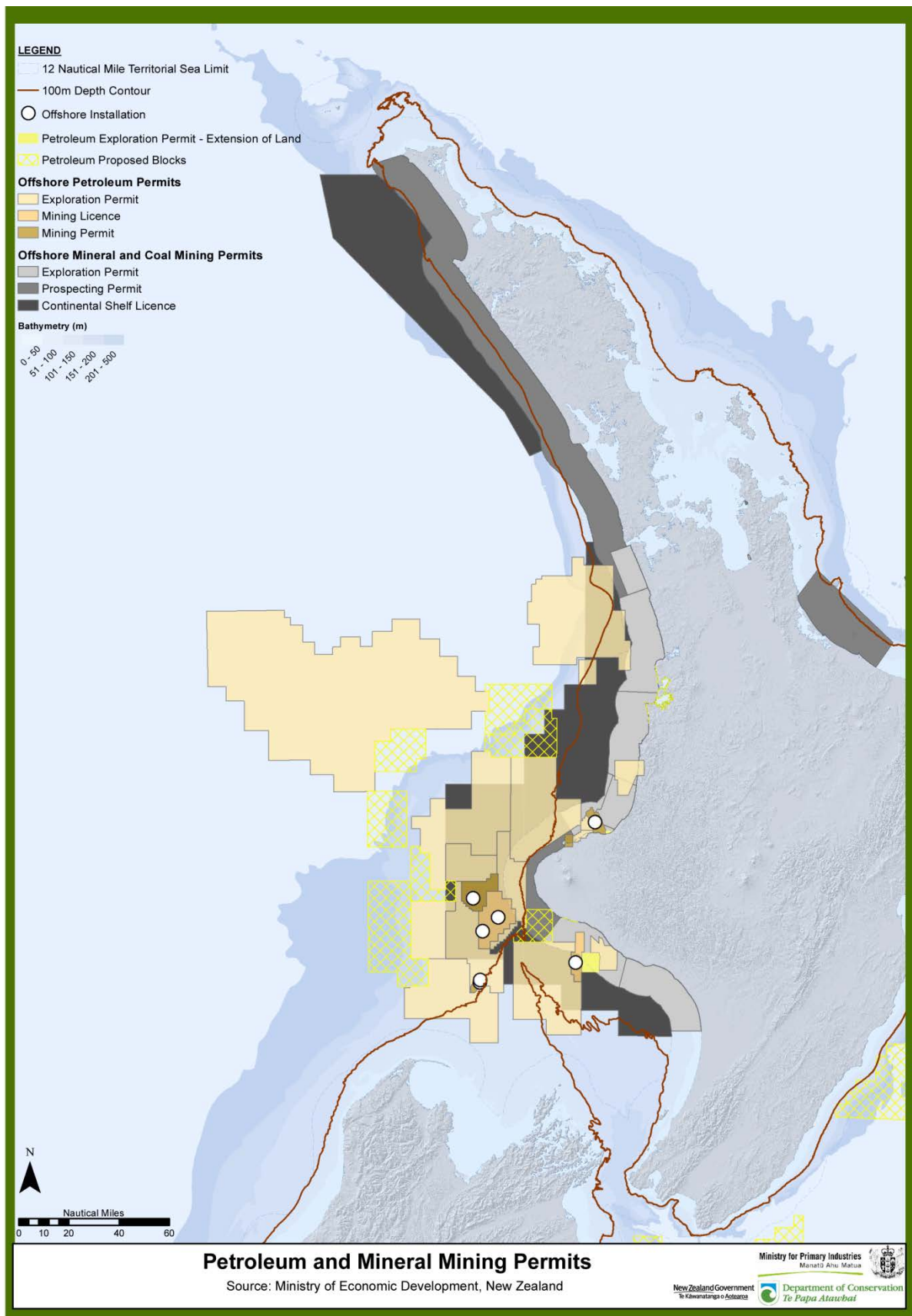


**Seismic Survey Tracks Data 2000 - 2005**  
Source: Ministry of Economic Development, New Zealand

DOC makes no express or implied warranties as to the accuracy or completeness of the data or information, nor its suitability for any purpose. DOC will not accept liability for any direct, indirect, special or consequential damages, losses or expenses, however arising and whether in law or fact, of any kind or description, suffered from the use of this information. Copyright reserved by the Department of Conservation, New Zealand. Crown Copyright Reserved.

Map 7





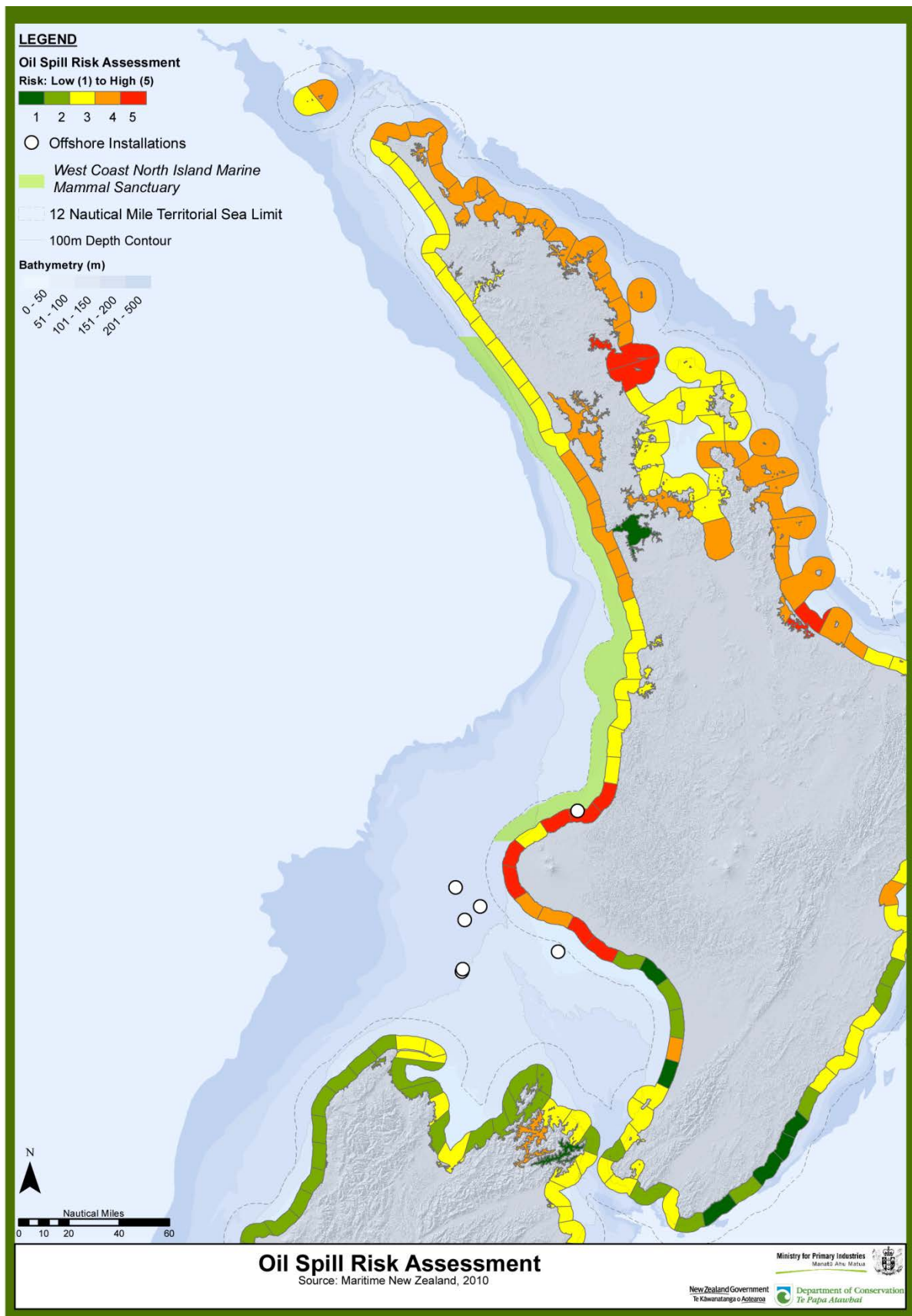
DOC makes no express or implied warranties as to the accuracy or completeness of the data or information, nor its suitability for any purpose. DOC will not accept liability for any direct, indirect, special or consequential damages, losses or expenses howsoever arising and relating to use, or lack of use, of the data or information supplied. Cadastral and Topographic information derived from Land Information New Zealand. Crown Copyright Reserved.

Map 8



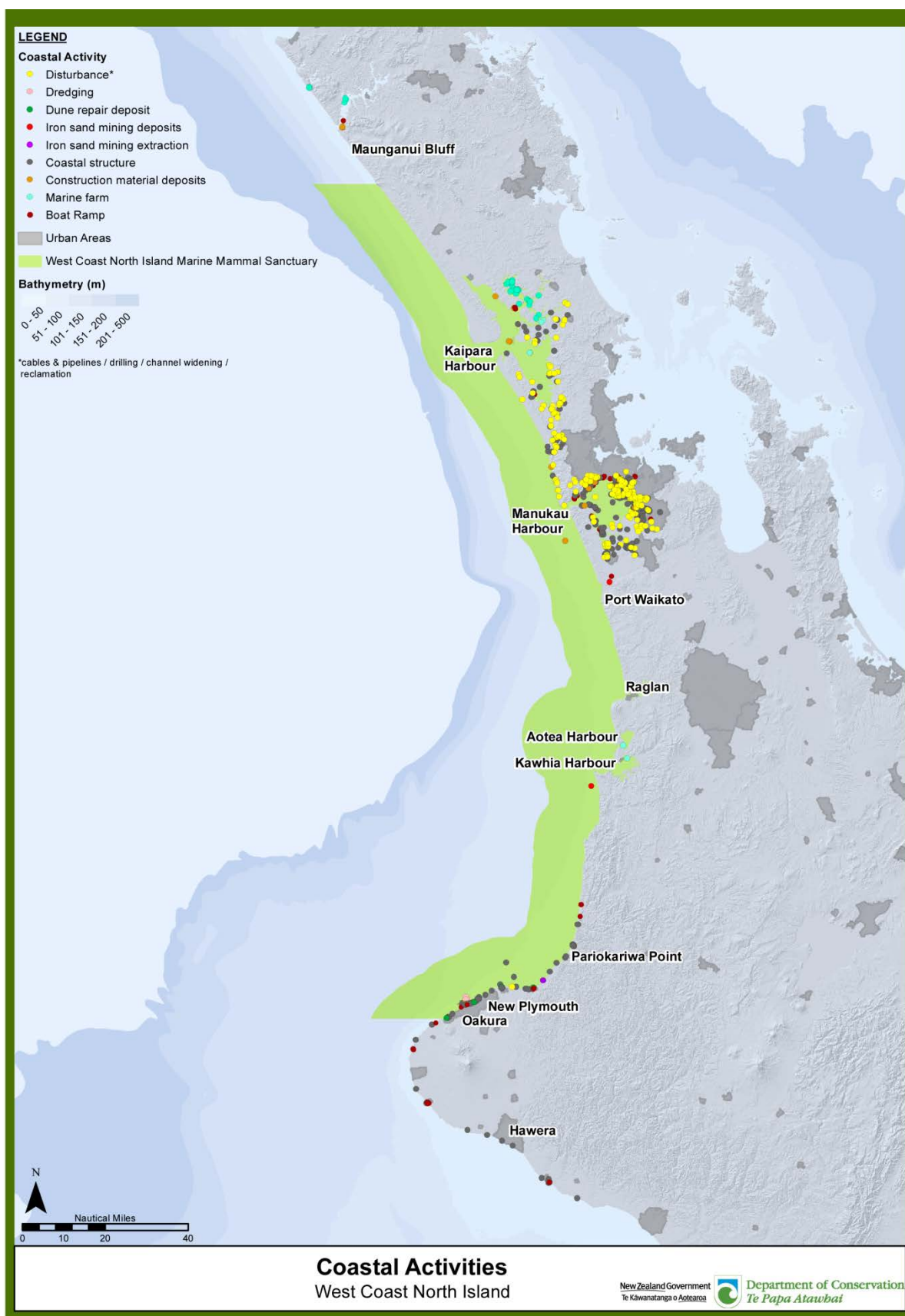
DOC makes no express or implied warranties as to the accuracy or completeness of the data or information, nor its suitability for any purpose. DOC will not accept liability for any direct, indirect, special or consequential damages, losses or expenses howsoever arising and relating to use, or lack of use, of the data or information supplied. Cadastral and Topographic information derived from Land Information New Zealand. Crown Copyright Reserved.

Map 9



Map 10





DOC makes no express or implied warranties as to the accuracy or completeness of the data or information, nor its suitability for any purpose. DOC will not accept liability for any direct, indirect, special or consequential damages, losses or expenses howsoever arising and relating to use, or lack of use, of the data or information supplied. Cadastral and Topographic information derived from Land Information New Zealand. Crown Copyright Reserved.

Map 11