

What has changed?

Framework Standard



Background

The Framework standard was previously referred to as the 'System Overview and Requirements'. The change in name has been deliberate to ensure it is recognised as the key overarching standard from which the other MPI standards and technical requirements are linked.

The Framework standards key focus is defining how MPI translates appropriate international standards and applies them to the New Zealand situation through the MPI Regulatory model. The themes/principles identified in the Framework standard flow through to the other Plant export standards and provide a clear 'certification framework' for all stakeholders. The challenge is to consider the Framework standard as something more than just an informative document but as the key overarching standard that provides a high level oversight of how individual organisations fit into the broader regulatory picture and who is responsibilities for what.

This standard has direct relevance not only to New Zealand export stakeholders but also to Regulators internationally (e.g. importing country officials) to give an oversight of how MPI operates with respect to Plant Exports certification. This regulatory viewpoint is significant as it relates directly to the credibility of 'NZInc'.

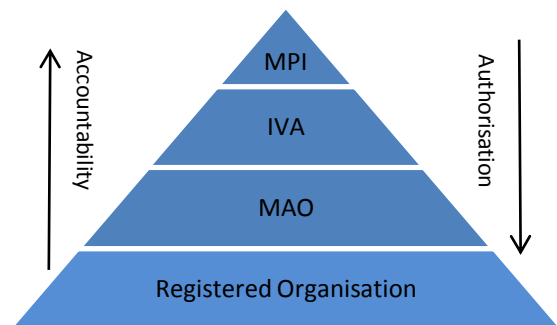
What have we changed?

To give the standard a greater focus on the framework the key areas of change include:

- Providing clarity on the international environment the NZ government and MPI (as the competent certification authority, e.g. NPPO) is working in and identifying the significance of the international forums

and standards that shape the relevant MPI standards.

- Refocused the MPI Regulatory model and broadened its intent beyond phytosanitary certification to include grade, seed, food safety, residue components.
- Detailed descriptions have been included for exporters/sectors wanting an official certification/assurance for seed varietal, export grade and/or export agrichemical residues.
- Included and recognises the role and responsibilities of registered organisations in the MPI Regulatory model.



- Redefining the roles and responsibilities of each of the New Zealand stakeholders in the export pathway and ensuring these are transferred through to the appropriate standards (e.g. IVA requirements, Organisation requirements).
- Increased the clarity of how importing country requirements are interpreted and applied for the receipt of MPI certification.
- Included a proviso that MPI can-not provide a guarantee that another NPPO will accept MPI phytosanitary certificates.

How will this impact you?

This new approach should result in:

- Minimal impact for both existing MAOs and new organisations
- Improved clarity on how you as the individual organisation fit in the broader

Note: This document only reflects the significant changes please refer to the applicable MPI Standard for all changes

What has changed?

Framework Standard



- context of MPI export assurances for the Plants sectors.
- Better context for how your phytosanitary certification system may align or integrate with some of your other MPI compliance programmes.
- An improved set of definitions and reference documents that back the MPI assurance system.

Detailed description of changes to Framework Standard

| Change | Why? | Impact on existing systems | |
|-----------------|---|---|--|
| All | Reformatted into a 'MPI standards' template. | No significant impact. Not anticipating organisations make reference to the Framework standard. | |
| All | Re-ordered the sections | | |
| Part (P) Intro. | A concise overview of who this Standard applies to and why it is important to understand the requirements. | No significant impact. The introduction indicates the standards general effect. | |
| P 1-1.1 | Expanded the MPI regulatory model (not just phytosanitary). | Aligning the principles for export assurance to address seed varietal, grade, residues and food safety requirements within a single framework. | Future proofing that will enable IVA's/MAO's to contain all MPI export assurances within the one documented system. |
| P 1.1 | Included Registered Organisations in the MPI regulatory model and defined their roles and responsibilities. | To identify organisations that are not MPI approved but play a key role in the assurance process. | Legitimises the role of registered organisations which tended to float as part of Official Assurance Programmes (OAPs). |
| P1.2 | Clarified the roles and responsibilities for each stakeholder | Provides better clarity of the roles and responsibilities of each of the stakeholder participating in the MPI export assurance environment. | Have transferred the roles and responsibilities through to the IVA and Organisation standard to provide better linkage and transparency. |
| P 2.1 | Broadened the International obligations to include non Phytosanitary bodies | Provides recognition to other international organisations (e.g. OECD, Codex) that set standards for non phytosanitary reasons. | No impacts at this point but frames up how non phytosanitary certification can be included in organisation systems. |
| P 2.2 | New section on Plant Export Assurance System framework | To clearly identify how the various export requirements relate to each other and the process that can be used to integrate the assurances processes in the future | |
| P 2.3 | Redefined principles for verification activities (IVA's) and inspection activities (MAO's) | Provides clarity of the principles and MPI expectations associated with verification and inspection activities. | No impacts. The principles transfer to the respective standards. |
| P 2.4 | Clarified MPI's response for post export requests for an official assurance. | MPI will only provide an official assurance if it is based on an authorised/approved verification system in place in NZ. | No impacts |
| P 3 | Dedicated section pertaining to Phytosanitary certification | Any non phytosanitary assurances removed to keep the focus solely on what is required to gain phytosanitary certification. | Subtle impacts depending on the service delivery scope and role of the organisation involved. |

Note: This document only reflects the significant changes please refer to the applicable MPI Standard for all changes

What has changed?

Framework Standard



| | | | |
|-------|--|--|---|
| P 3.1 | Pertains only to international phytosanitary obligations | Identifies the key phytosanitary organisations and how they impact NZ phytosanitary certification processes. | No impacts. |
| P 3.2 | Redefined description of the MPI Phytosanitary certification system. | Clarity on how the system works and how organisations can attain certification. New diagram to show the various stakeholders and their relationships. | No impacts. |
| P 3.3 | Redefined list of Phytosanitary standards | Identifies new standards (e.g. Audit), changed focus of existing standards and how importing country requirements (including OAP's) fit together. | New and adjusted requirements in individual standards that may impact organisations. |
| P 4 | New section dealing specifically with Seed Varietal certification | Makes it clear as to the specific requirements of seed varietal certification without confusing it with the phytosanitary requirements. | Non-significant impact. Option currently available. This section will provide better clarity for seed exporters. |
| P 5 | New section dealing with the Grade certification system | To provide clarity on how the Grade certification system works and when export grade certificates can be requested. | Non-significant impact. Option currently available. This section will provide better clarity for exporters considering grade certification. |
| P 6 | New section dealing with Export Food Safety Assurances | To provide clarity NZ legislation governing food safety and how the Agrichemical assurance system works and when agrichemical assurances can be requested. | Non-significant impact. Option currently available. This section will provide better clarity for exporters considering agrichemical assurances. |
| P 7 | MPI cost recovery fees | Provide clarification that all the export assurance programmes are cost recovered from the participants and where to access the schedule of fees. | No change. |
| App1 | References | Updated set of references used in the various Plant Export standards. | N/A. Although any changes in the references may impact the individual organisation. |
| App 2 | Definitions | Updated set of definitions used in the various Plant Export Standards | N/A. Although where the definition has changed it may impact the individual organisation. |

Note: This document only reflects the significant changes please refer to the applicable MPI Standard for all changes