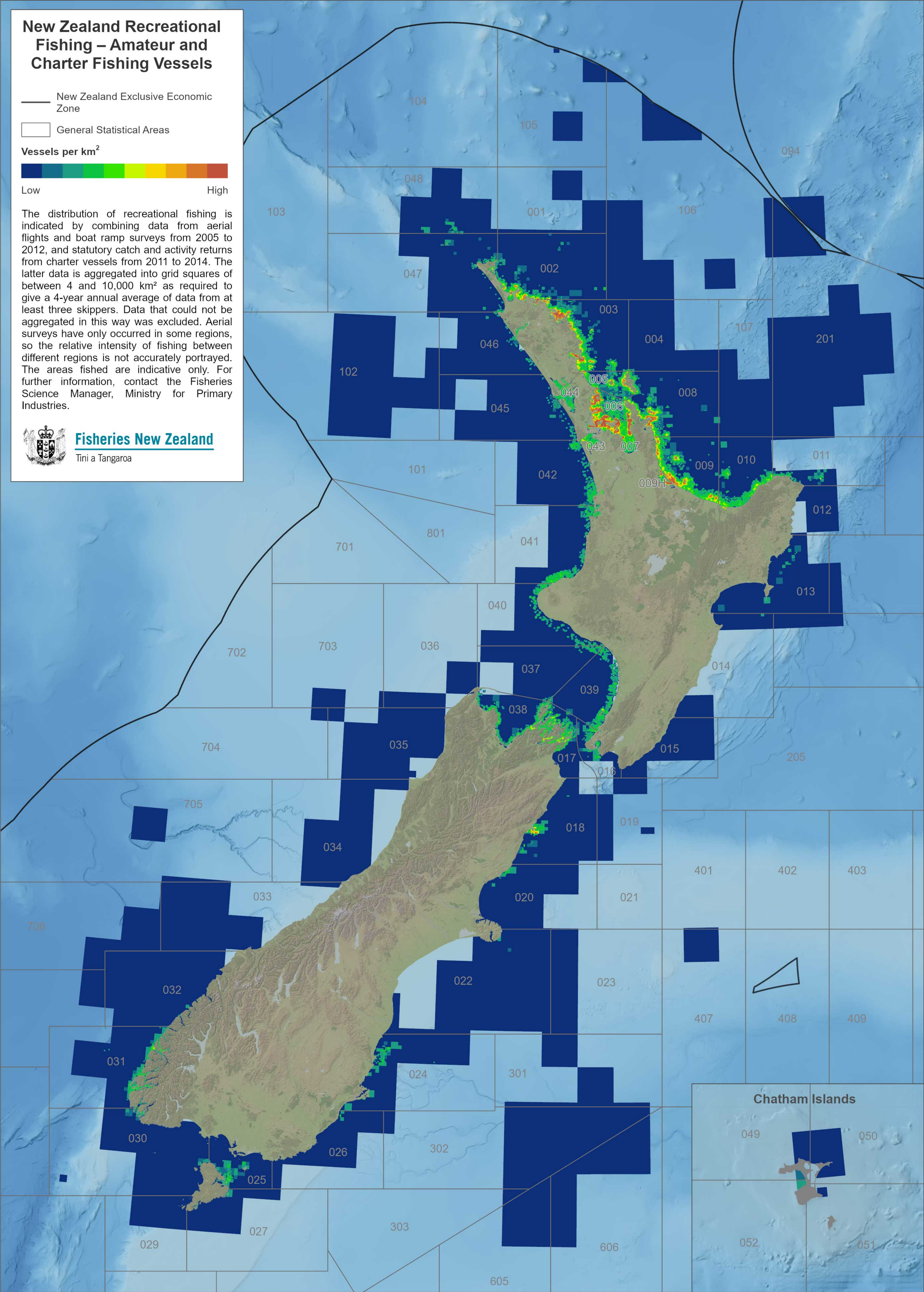


New Zealand Recreational Fishing – Amateur and Charter Fishing Vessels



The distribution of recreational fishing is indicated by combining data from aerial flights and boat ramp surveys from 2005 to 2012, and statutory catch and activity returns from charter vessels from 2011 to 2014. The latter data is aggregated into grid squares of between 4 and 10,000 km² as required to give a 4-year annual average of data from at least three skippers. Data that could not be aggregated in this way was excluded. Aerial surveys have only occurred in some regions, so the relative intensity of fishing between different regions is not accurately portrayed. The areas fished are indicative only. For further information, contact the Fisheries Science Manager, Ministry for Primary Industries.



Disclaimer: This map and all information accompanying it (the "Map") is intended to be used as a guide only, in conjunction with other data sources and methods, and should only be used for the purpose for which it was developed. The information shown in this Map is based on a summary of data obtained from various sources. While all reasonable measures have been taken to ensure the accuracy of the Map, MPI: (a) gives no warranty or representation in relation to the accuracy, completeness, reliability or fitness for purpose of the Map; and (b) accepts no liability whatsoever in relation to any loss, damage or other costs relating to any person's use of the Map, including but not limited to any compilations, derivative works or modifications of the Map. Crown copyright ©. This map is subject to Crown copyright administered by Ministry for Primary Industries (MPI).

Data Attribution: This map uses data sourced from LINZ under CC-BY 4.0, Geographx ©, NIWA